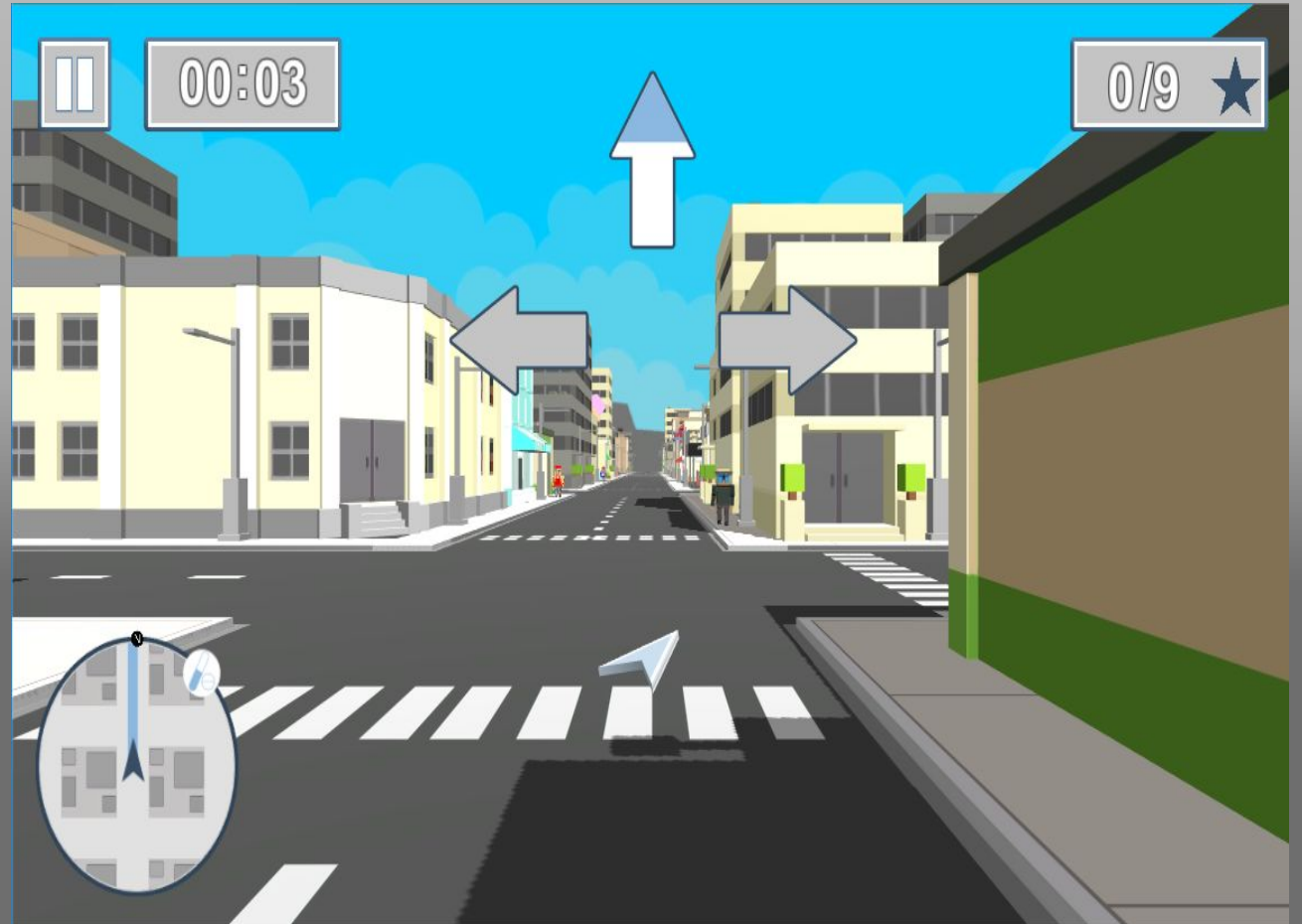


Avangarde Software Solutions

Games as Therapy Tools

Car driving Game

- Helps patient both with locomotive functions and decision making by using the Kinect camera as input.
- The control itself consists of doing normal hand movements used in day to day exercise, giving the patient a choice at each intersection in order to reach a destination



Aid in patient recovery

- Develops rational thinking
- Prepares the patient for re-entering day to day life.
- Sharpens cognitive skills



Climbing Game

- Uses the Kinect camera as input
- Allows the player to grab onto object in order to reach his/her goal
- Improves hand-eye coordination, reaction time and cognitive skills



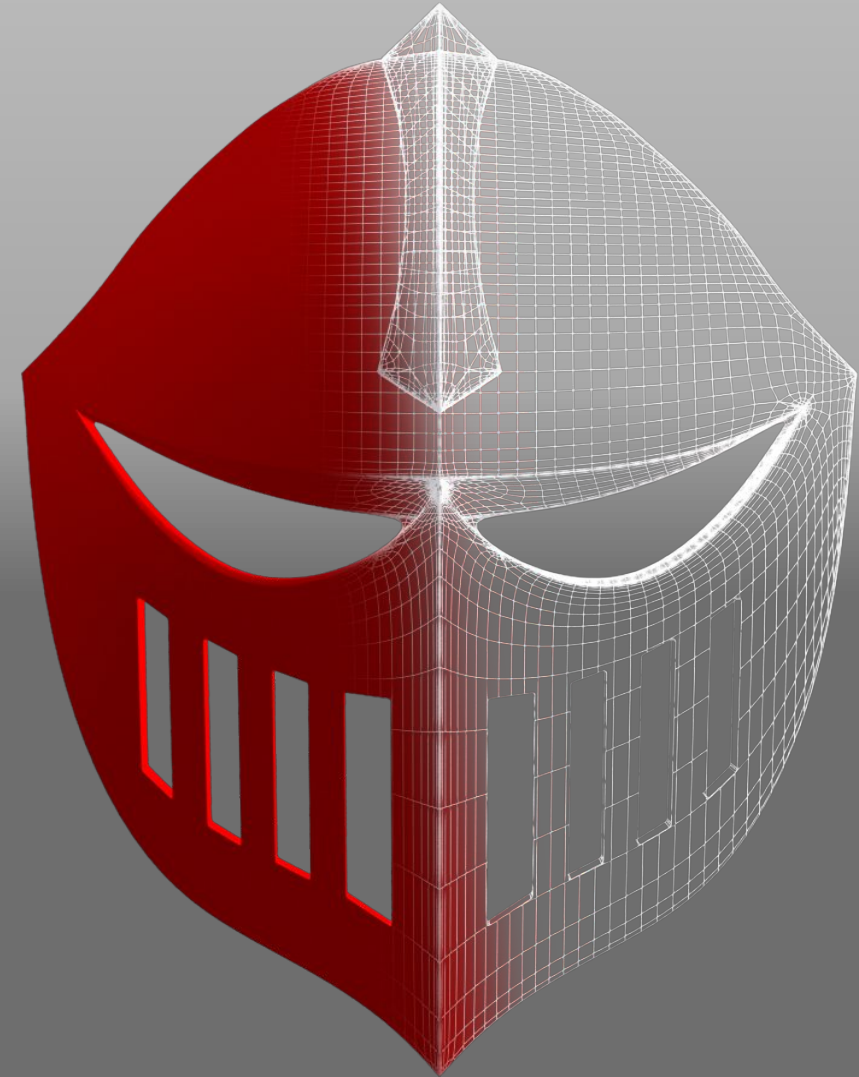
Versatile active gaming experience

- Going off the patients progress, objects to collect and avoid can be added for each level, adding a new level of challenge to the game.

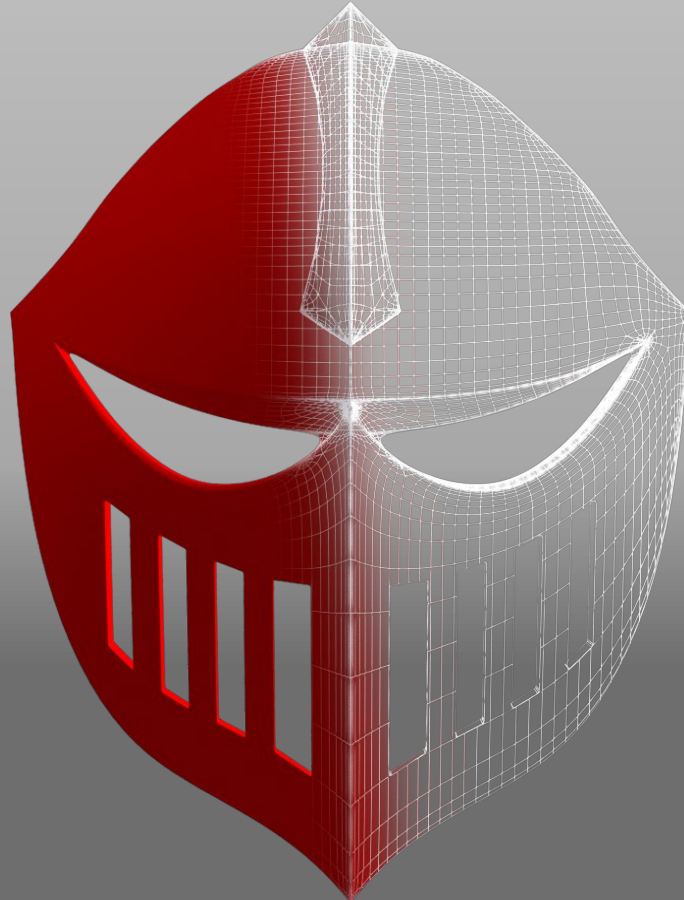


Designed with input from professional therapists

Both products were made with inputs from a clinical team, coding guidelines and following certain hardware restrictions that had to be followed, in order to assure the product follows the clients requirements and criteria.



Thank You!



Avangarde Software Solutions