

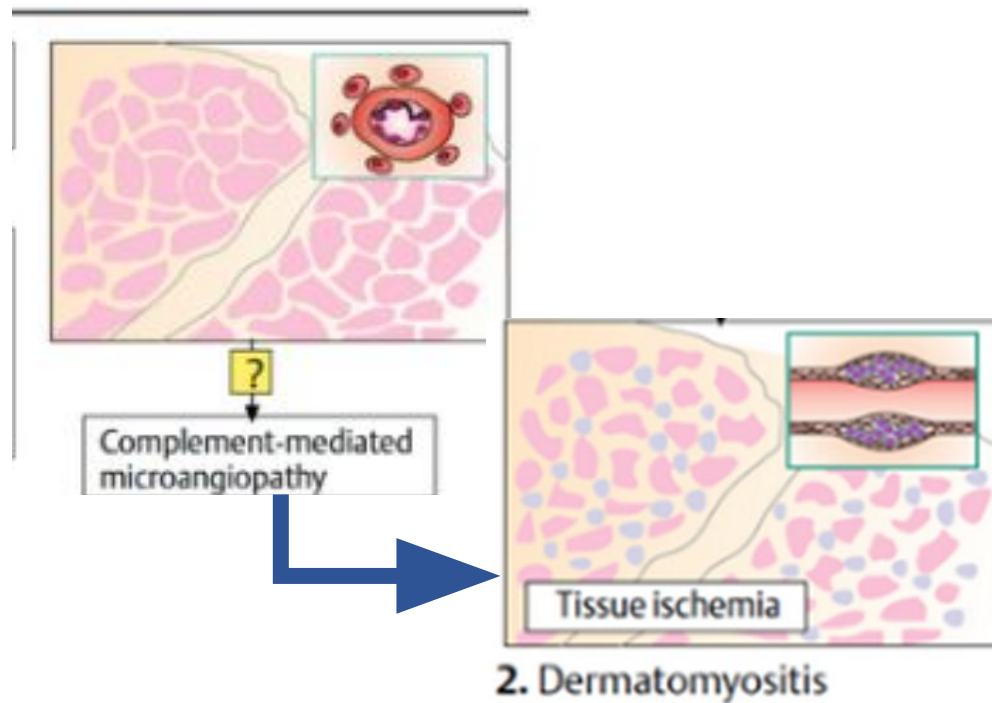
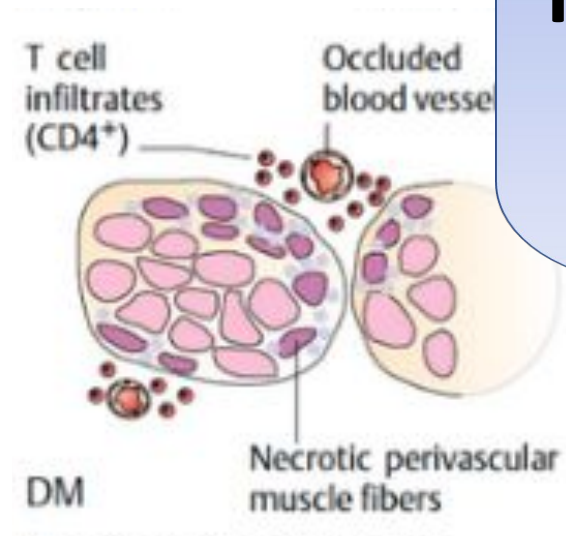
# Dermatomyositis as a risk factor of carcinogenesis- case report

**Aleksandra Rawska<sup>2</sup>, Ewa Stryjecka<sup>2</sup>, Klaudia Sowa<sup>2</sup>, Joanna Radulska<sup>2</sup>, Daria Zalewska<sup>2</sup>, dr n. med. Dorota Suszek<sup>1</sup>**

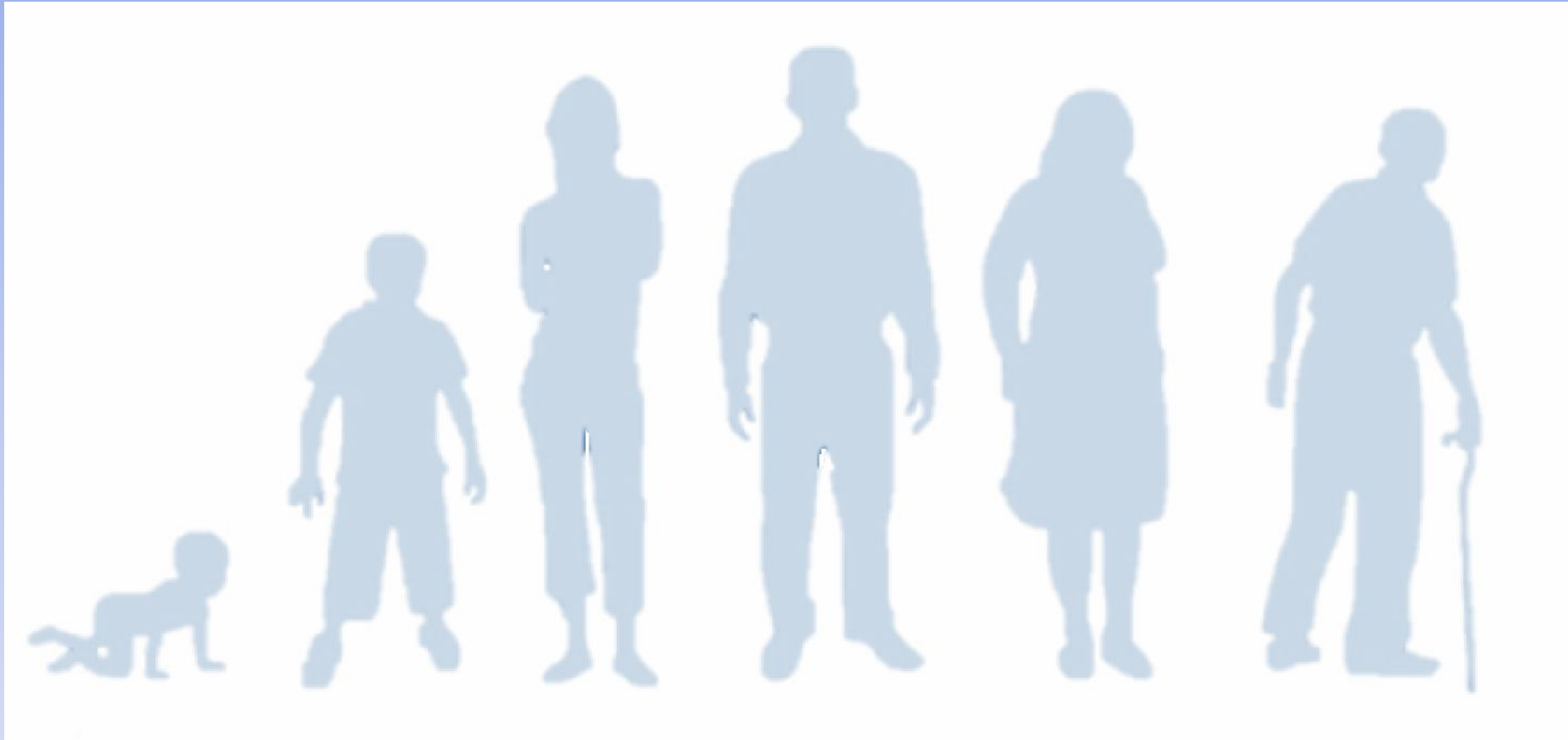
1. Rheumatology and Systemic Connective Tissue Diseases Clinic of the Medical University in Lublin

2. Student Research Group at the Department and Clinic of Rheumatology of the Medical University in Lublin

**Dermatomyositis (DM)**  
is an idiopathic inflammatory myopathy  
involving proximal muscle weakness and  
non-suppurative skeletal muscle  
inflammation



# Epidemiology



0 to 5

15

30

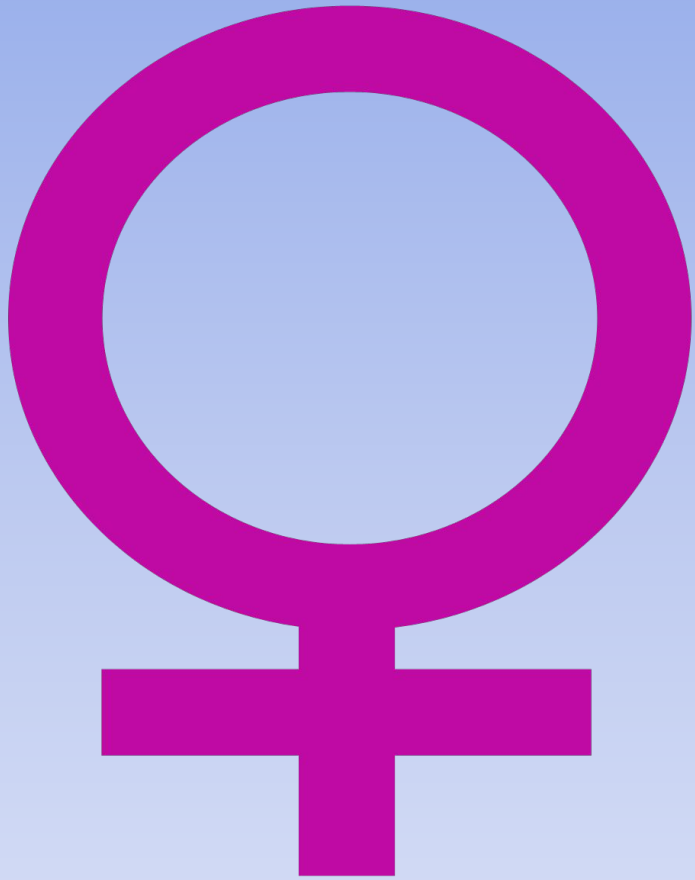
40

50

60

> 60

# Female-to-Male incidence ratio



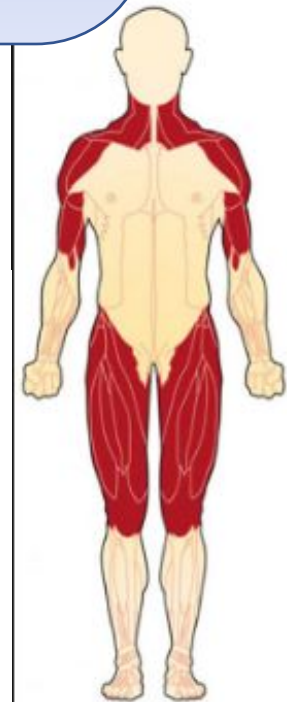
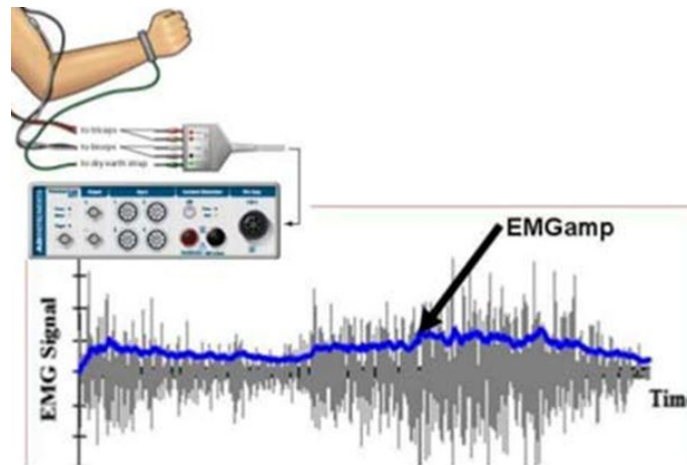
2 to 3 : 1

# The most commonly used criteria

1. Symmetric proximal muscle weakness
2. Elevated serum muscle enzymes
3. Myopathic changes in electromyography (EMG)
4. Characteristic muscle biopsy abnormalities
5. Typical rash



Shawl Sign



Front



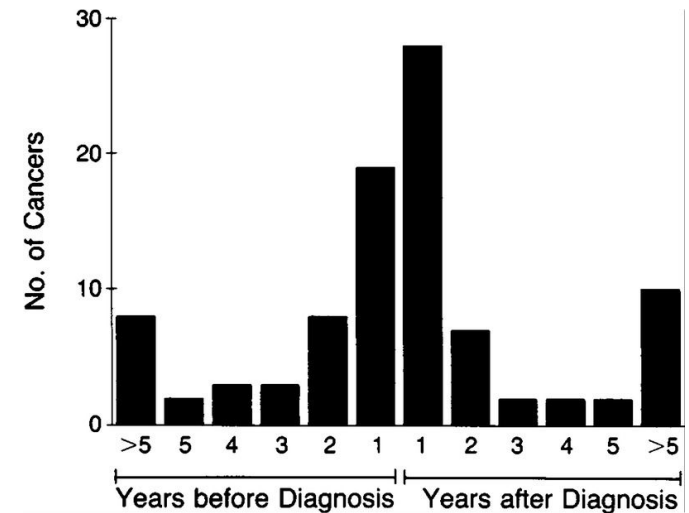
Back

# INCREASED RISK OF CANCER

1. Patients with DM must be monitored closely for potential malignancies, as there is an increased risk of cancer, particularly within the first 5 years after symptom onset
2. The **most common cancers** seen in patients with DM include

breast  
colon  
lung  
ovarian  
melanoma  
non-Hodgkin lymphoma (NHL)  
nasopharyngeal  
stomach

3. The overall cancer rate in patients with DM varies between **9% and 32%**.
4. The highest risk of developing cancer in patients with DM is within the first year of onset of myositis
5. **Dermatomyositis as a paraneoplastic syndrome may precede symptoms and diagnosis of cancer or develop in advanced cancer process**



Temporal Relation between the Diagnosis of Dermatomyositis and the Diagnosis of Cancer

<https://www.nejm.org/doi/full/10.1056/nejm199202063260602>

# Screening



**CT scan: chest, abdomen, pelvis**



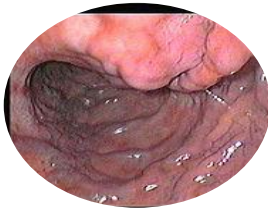
**CA 125   CEA   CA 19-9   CA 15-3   AFP   HCG**



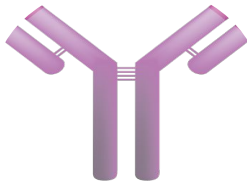
**mammography**



**cytology**



**colonoscopy, gastroscopy**



**monoclonal protein**

# Case report

- 49 year old ,female patient diagnosed with DM in 2016
- Early symptoms were:
  - rash on the face and eyelids,
  - Gottron sign,
  - proximal muscle weakness,
  - difficulties with deglutition and speech.
- In the family: endometrial cancer (mother), digestive track cancer( 2 brothers)

## The most commonly used criteria

1. Symmetric proximal muscle weakness +
2. Elevated serum muscle enzymes +
3. Myopathic changes in electromyography (EMG)
4. Characteristic muscle biopsy abnormalities +
5. Typical rash +



# SKIN SYMPTOMS



# TREATMENT

Ciclosporin  
Chloroquine  
Methylprednisolone  
Azathiopryne  
Mycophenolate mofetil

no long-term remission



exacerbation of the disease



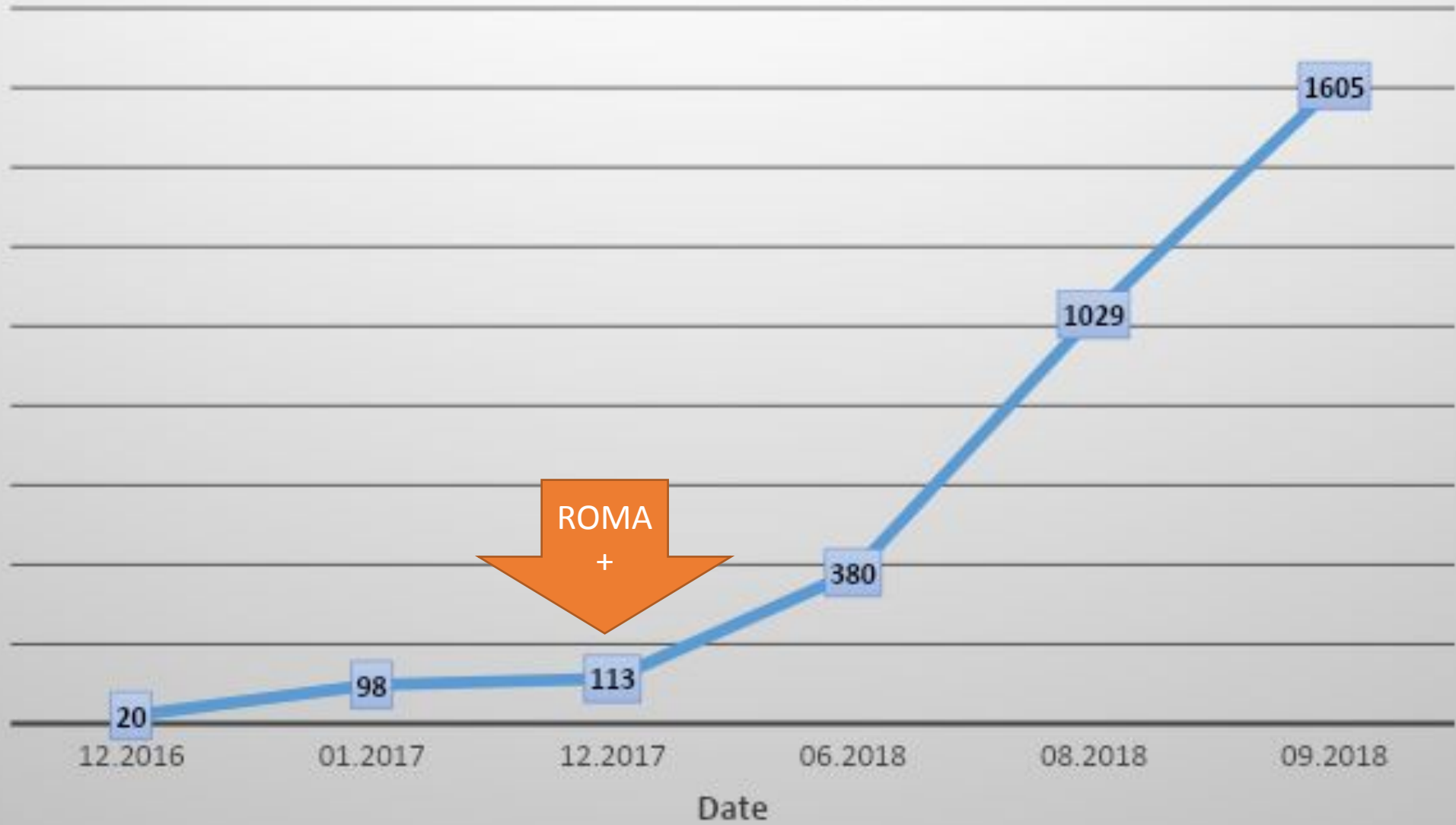
steroids iv in high doses

# Course of a disease

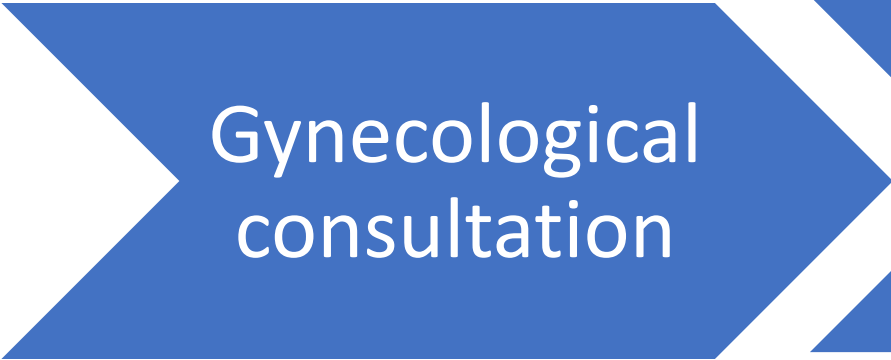
2017

- CA-125 value increased, test ROMA +
- USG: thickening of endometrium
- ↑ Aldolase
- Autoantibodies -

# CAE 125 change



Increased CA-125 value



Diagnostic laparoscopy

2018

- Laparoscopic removal of both fallopian tubes and right ovary
- **Low differentiated serous cancer infiltrating parts of fallopian tube, connective tissue and surrounding fatty tissue** was discovered

# SEROUS FALLOPIAN TUBE CANCER



DECISION ABOUT  
COMPLETE REMOVAL OF REPRODUCTIVE ORGANS

# CONCLUSION

- Dermatomyositis can be a risk factor of carcinogenesis
- It is important to pay attention to possibility of cancer development
- Patients should be under careful medical supervision



# Bibliography

- Risk of Cancer in Patients with Dermatomyositis or Polymyositis  
Bárdur Sigurgeirsson, M.D., Bernt Lindelöf, M.D., Ph.D., Olof Edhag, M.D., Ph.D., and Erik Allander, M.D., Ph.D.
- <https://www.ncbi.nlm.nih.gov/pmc/articles/PMC3482801/>
- <https://www.ypo.education/rheumatology/polymyositis-and-dermatomyositis-t226/video/>
- <https://twitter.com/lindelatorreMD>
- <https://anatomybodydiagram.com/the-muscle-structure-in-human-body-of-female/the-muscle-structure-in-human-body-of-female-human-anatomy-muscle-system-female-stock-image-image-67471/>
- <https://www.ncbi.nlm.nih.gov/books/NBK532860/>