



BLOOD PRESSURE , METHOD OF REGISTRATION AND It's TYPES.

Supervised by,
Asst Professor
Tymchenko Svetlana

Presented By,
Pachamuthu Pavithkumar
Group no. LA2-182A



Definition:

- The Lateral pressure exerted by the column of blood on the wall of arteries. The pressure is exerted when blood flows through arteries.
- It is expressed in different terms
 - 1) Systolic Blood pressure
 - 2) Diastolic Pressure
 - 3) Pulse Pressure
 - 4) Mean Arterial Blood Pressure



Method of Blood Pressure Registration

- Blood Pressure was first measured in Horse in 1733 by **Stephen Hales** with a long tube of 9 feet length.

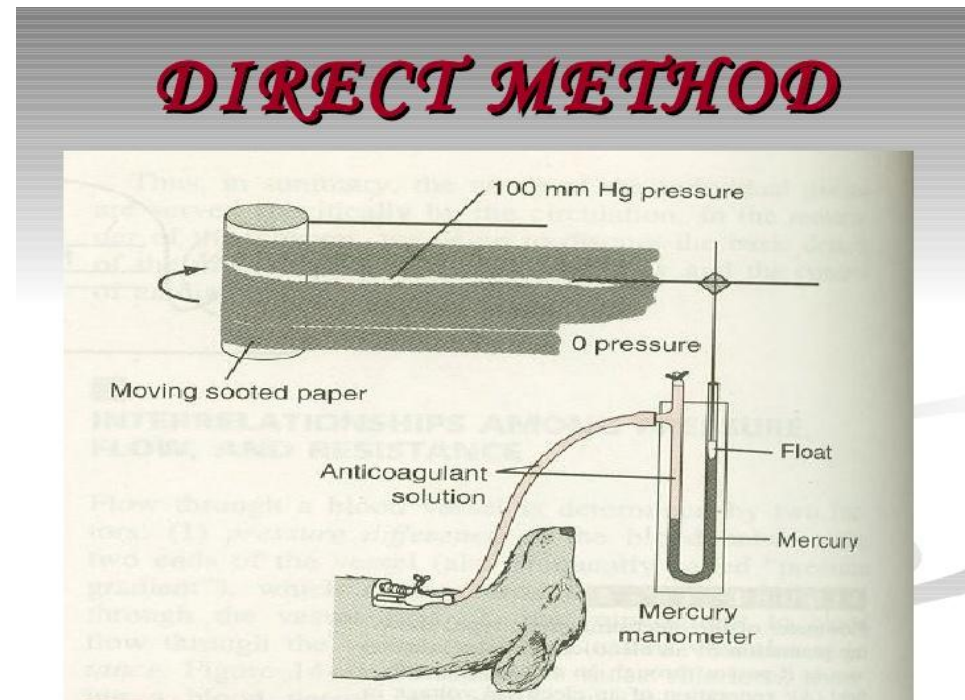
Blood Pressure is measured by **TWO** Methods

- A. Direct Method
- B. Indirect Method



Direct Method

- Is employed only in animals, given anesthesia then the neck opened and a tracheal cannula is inserted into the trachea, then tracheal cannula is connected to a respiratory pump.
- Carotid artery is cannulated and connected to a **mercury manometer** by using **Kymograph**.



Indirect Method

- Is used to measure arterial pressure in man as well as in animals

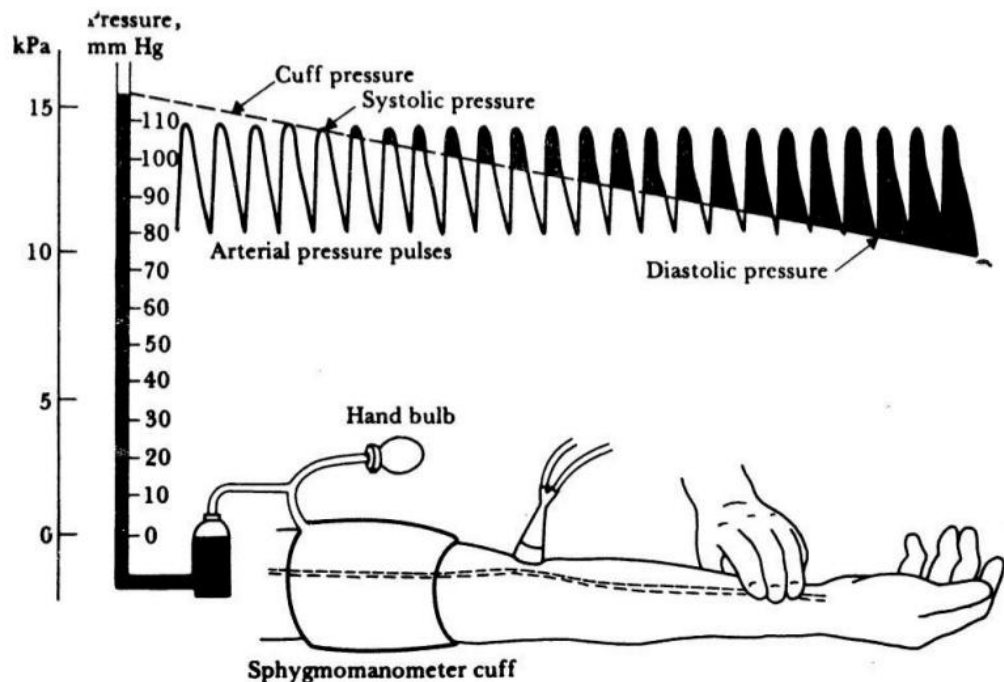
APPARATUS

- **Sphygmomanometer** and **stethoscope**.

PRINCIPAL

- When an external pressure is applied over the artery the blood flow through it is obstructed and required to cause occlusion of blood flow indicate the pressure inside the vessel

Indirect Blood Pressure Measurement - Sphygmomanometer



METHODS

- Brachial Artery is usually chosen because of convenience .

Measured by 3 Methods

- 1) Palpatory Method
- 2) Auscultatory Method
- 3) Oscillatory Method

Automatic Blood Pressure Instrument

- Has used a **Microprocessor driven air pump,**

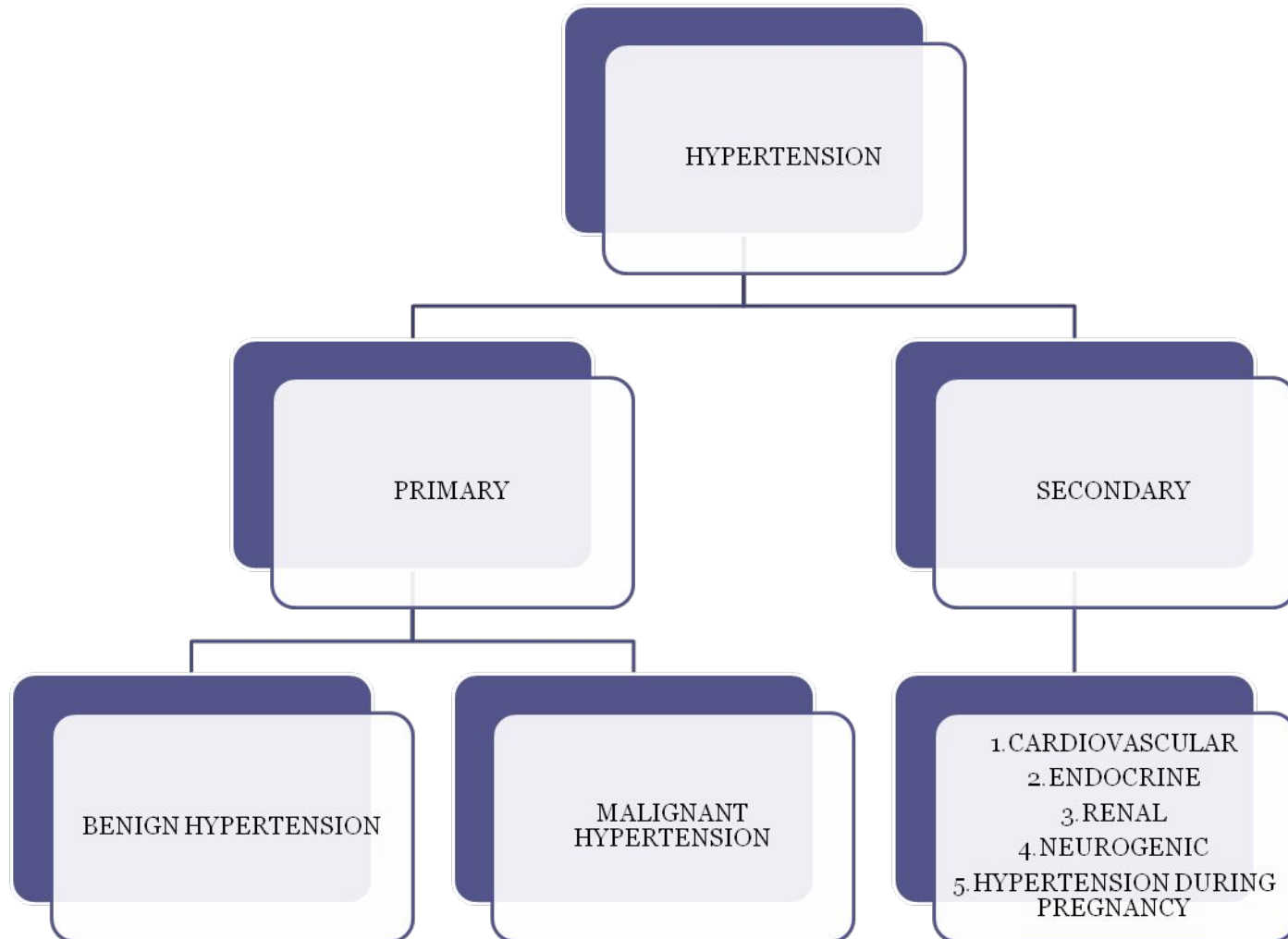


HYPERTENSION

- Defined as the persistent increase in systemic arterial Blood Pressure
- Systolic elevated above 150mmHg , diastolic pressure remains elevated above 90mmHg
- If there is Increase only in Systolic pressure , it is called **Systolic Hypertension**



TYPES OF HYPERTENSION:



HYPOTENSION

- Is the low Blood Pressure
- When the systolic pressure less than 90mmHg

TYPES

1. Primary Hypotension
2. Secondary Hypotension
3. Orthostatic Hypotension



THANK

YOU...!



