

The common problem and troubleshooting of Tablet

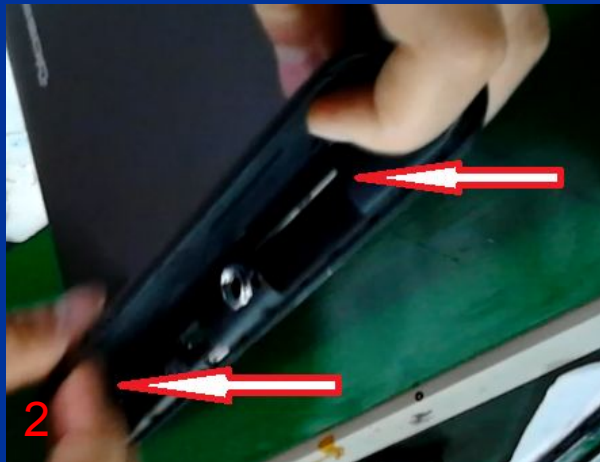
*The way of troubleshooting and steps of pictures
presentation for B988*

Common problem I

LCD screen display white spots

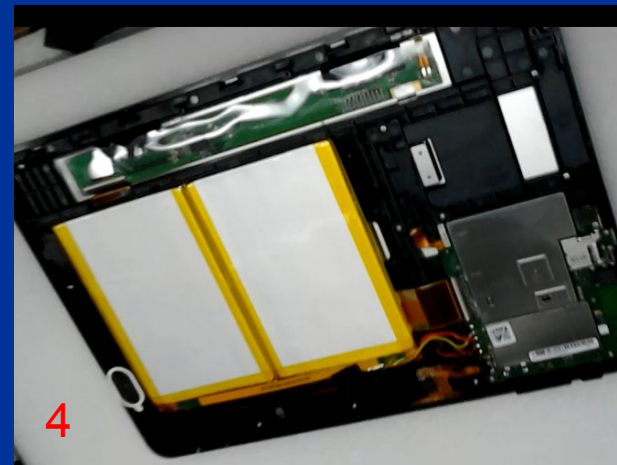
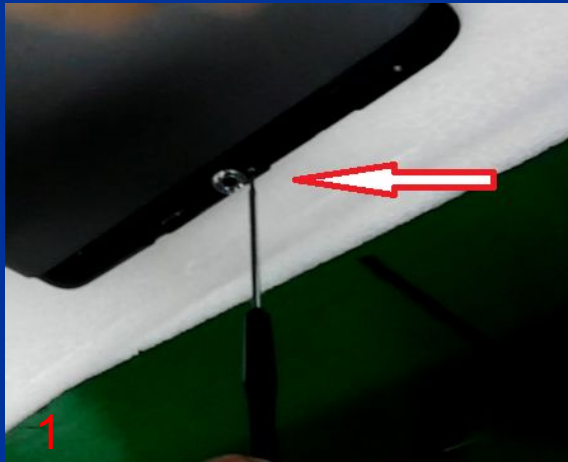
Maintenance Steps

Remove the protection cover



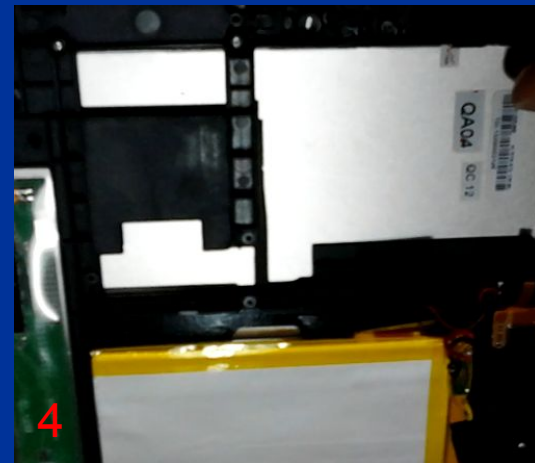
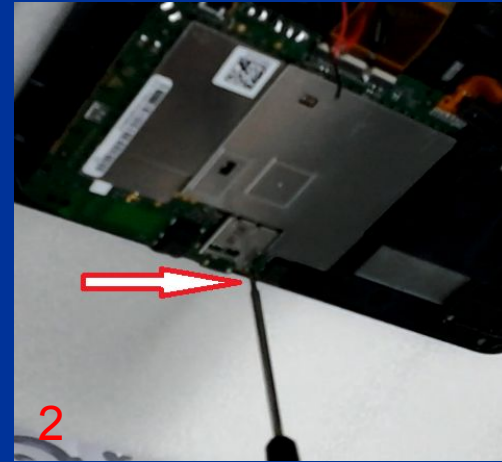
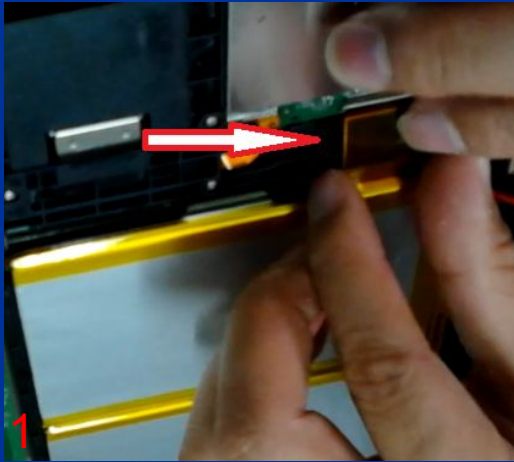
Maintenance Steps ②

Remove the backshell



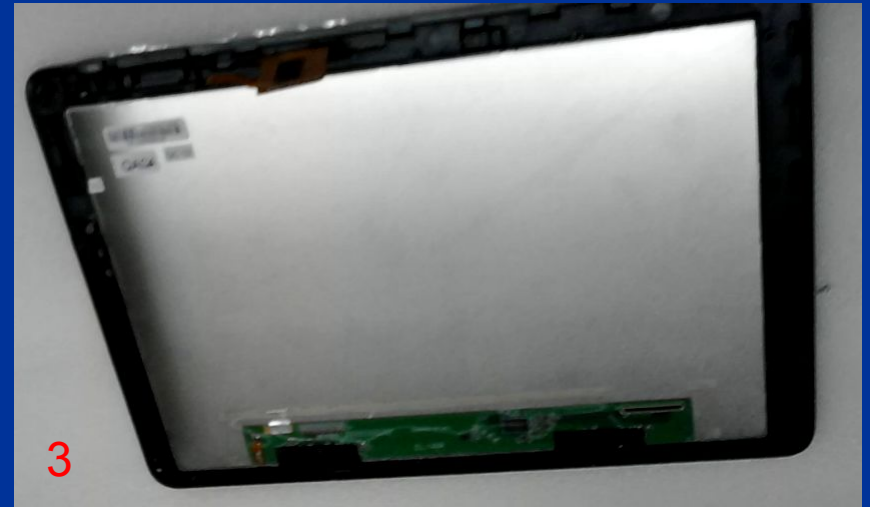
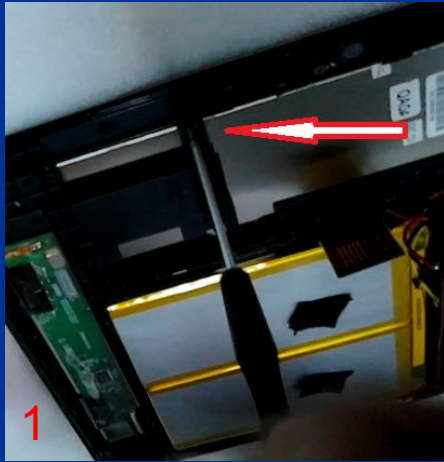
Maintenance Steps ③

Remove the mainboard



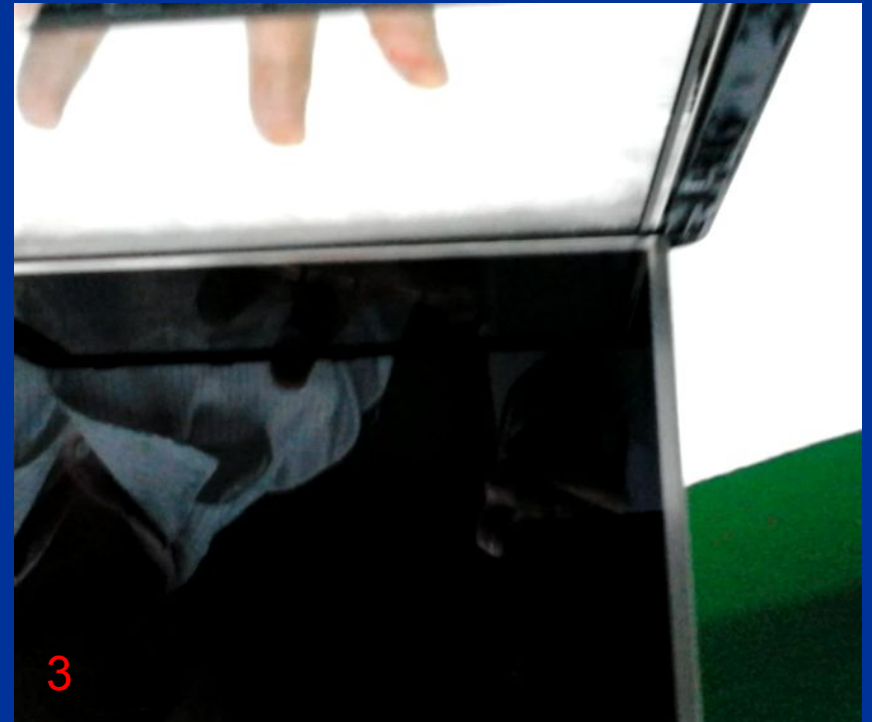
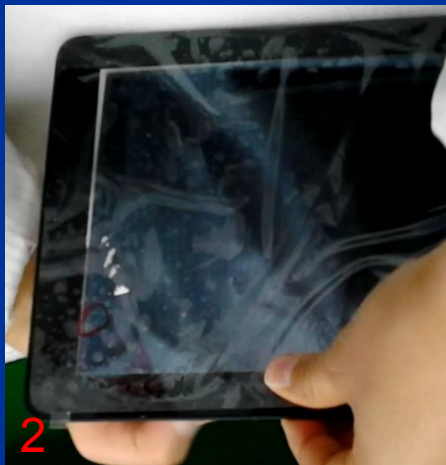
Maintenance Steps ③

Remove the battery



Maintenance Steps ④

Remove the LCD screen



Maintenance Steps ⑤

Change and install a new LCD screen making it as to be OK

Only for reference about above content

Thanks for your reading