



PREFIXES FOR ADJECTIVES

UN - IM - IR - IL - IN - DIS



**COMPLETE THE ADJECTIVES USING:
UN - IM - IR - IL - IN - DIS**

**HIS SISTERS THOUGHT THAT HIS
AUTOBIOGRAPHY WAS **DIS**.....LOYAL
TO THE FAMILY.**





**COMPLETE THE ADJECTIVES USING:
UN - IM - IR - IL - IN - DIS**

**IT'S BAD FOR YOUR HEALTH TO BE
PHYSICALLY **IN** ACTIVE.**





**COMPLETE THE ADJECTIVES USING:
UN - IM - IR - IL - IN - DIS**

**HE WAS QUITE HANDSOME BUT HAD
___**IR**___ REGULAR TEETH.**





**COMPLETE THE ADJECTIVES USING:
UN - IM - IR - IL - IN - DIS**

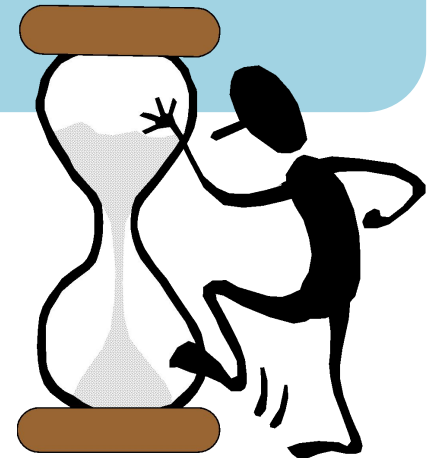
**HE'S IMPOSSIBLE TO WORK FOR -
HE'S SO **DIS**_____ORGANIZED.**





**COMPLETE THE ADJECTIVES USING:
UN - IM - IR - IL - IN - DIS**

**YOU'D BE HOPELESS LOOKING AFTER
CHILDREN - YOU'RE FAR TOO
.....**IM**.....PATIENT!**



A cartoon illustration at the top of the page shows a yellow bird's head with large, wide eyes and a beak, looking slightly to the right. On either side of the bird's head, a yellow bee is crawling on a horizontal line. The bee on the left is facing right, and the bee on the right is facing left.

**COMPLETE THE ADJECTIVES USING:
UN - IM - IR - IL - IN - DIS**

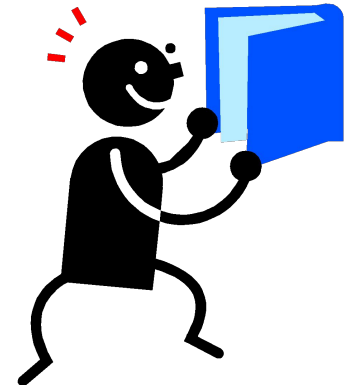
**HE'S BEEN DIS HONEST IN HIS
DEALINGS WITH US.**





**COMPLETE THE ADJECTIVES USING:
UN - IM - IR - IL - IN - DIS**

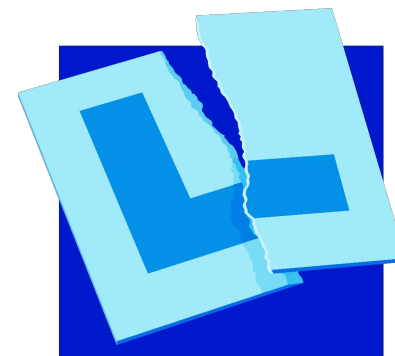
**A SURPRISING PERCENTAGE OF THE
POPULATION ARE IL LITERATE.**





**COMPLETE THE ADJECTIVES USING:
UN - IM - IR - IL - IN - DIS**

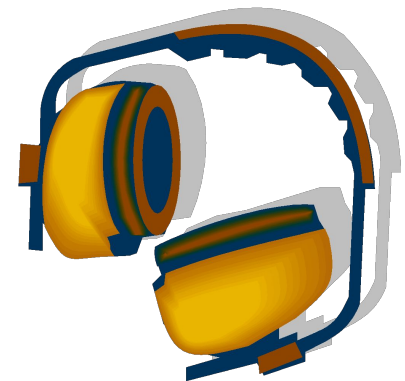
**IT IS IL LEGAL TO DRIVE A CAR
THAT IS NOT TAXED AND INSURED.**





**COMPLETE THE ADJECTIVES USING:
UN - IM - IR - IL - IN - DIS**

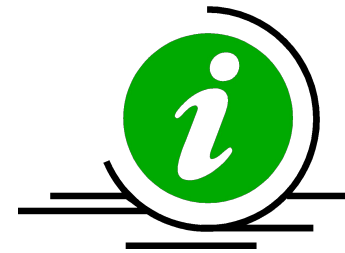
**IT WAS IMPOSSIBLE TO SLEEP
BECAUSE OF THE NOISE.**





**COMPLETE THE ADJECTIVES USING:
UN - IM - IR - IL - IN - DIS**

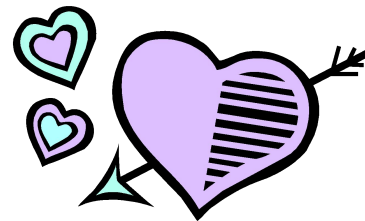
**THIS INFORMATION WAS
PREVIOUSLY **UN** _____ AVAILABLE TO THE
PUBLIC.**





**COMPLETE THE ADJECTIVES USING:
UN - IM - IR - IL - IN - DIS**

I THINK SHE'S IN CAPABLE OF LOVE.





**COMPLETE THE ADJECTIVES USING:
UN - IM - IR - IL - IN - DIS**

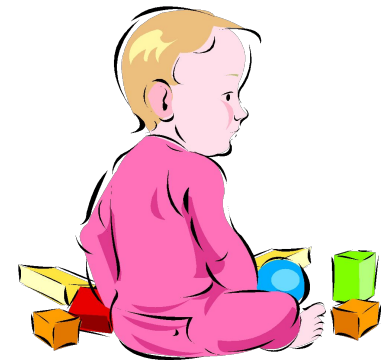
**MANY VOTERS HAVE BECOME
___**DIS**___ ENCHANTED WITH THE
GOVERNMENT.**





**COMPLETE THE ADJECTIVES USING:
UN - IM - IR - IL - IN - DIS**

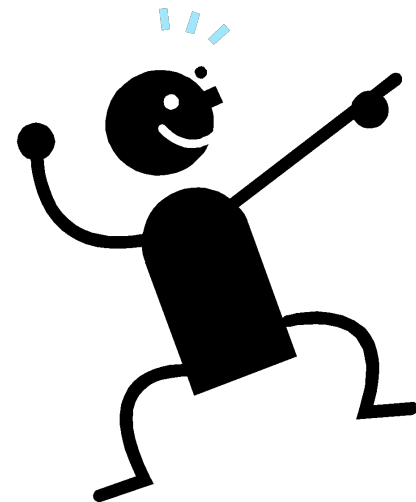
**IT WAS UNKIND OF YOU TO TAKE HIS
RATTLE AWAY.**





**COMPLETE THE ADJECTIVES USING:
UN - IM - IR - IL - IN - DIS**

IT IS **IM___POLITE TO POINT AT
PEOPLE.**





**COMPLETE THE ADJECTIVES USING:
UN - IM - IR - IL - IN - DIS**

SHE'S **UN_____CERTAIN WHETHER TO GO
TO NEW ZEALAND OR NOT.**





**COMPLETE THE ADJECTIVES USING:
UN - IM - IR - IL - IN - DIS**

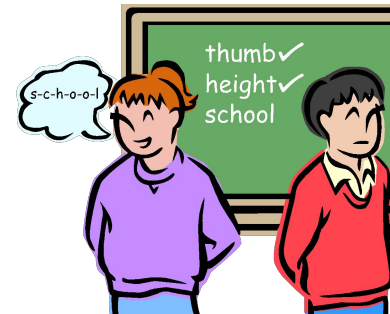
**HE WAS CONFUSED ^{IN} AND
-----COHERENT AND I DIDN'T GET
MUCH SENSE OUT OF HIM.**





**COMPLETE THE ADJECTIVES USING:
UN - IM - IR - IL - IN - DIS**

HIS WRITING IS ALMOST IL LEGIBLE





**COMPLETE THE ADJECTIVES USING:
UN - IM - IR - IL - IN - DIS**

**BE CAREFUL THAT LIQUID IS HIGHLY
-----**IN**FLAMMABLE.**





**COMPLETE THE ADJECTIVES USING:
UN - IM - IR - IL - IN - DIS**

**HER DAUGHTER IS SUCH A
___**DIS**OBEDIENT CHILD.**





**COMPLETE THE ADJECTIVES USING:
UN - IM - IR - IL - IN - DIS**

THE BUILDING IS **IN STILL
.....COMPLETE.**



A cartoon illustration of a yellow bird's head with large eyes and a beak, looking slightly to the right. On either side of the bird's head, a yellow bee is crawling on a horizontal line. The bee on the left is facing right, and the bee on the right is facing left.

**COMPLETE THE ADJECTIVES USING:
UN - IM - IR - IL - IN - DIS**

**UNLESS THE OIL SPILL IS CONTAINED,
IR REPARABLE DAMAGE WILL BE
DONE TO THE COASTLINE.**





**COMPLETE THE ADJECTIVES USING:
UN - IM - IR - IL - IN - DIS**

**THE UNIONS HAVE DESCRIBED THE
LATEST PAY OFFER AS
UN
_____ACCEPTABLE.**



A cartoon illustration of a yellow bird's head with large eyes and a beak, looking forward. On either side of the bird's head, a yellow bee is crawling on a horizontal line. The background is a light teal color.

**COMPLETE THE ADJECTIVES USING:
UN - IM - IR - IL - IN - DIS**

**I LOVE HIGH HEELS BUT THEY'RE
RATHER **IM** PRACTICAL.**



A cartoon illustration of a yellow bird's face with large eyes and a beak, looking forward. On either side of the bird's head, a yellow bee is shown from behind, crawling on a horizontal line.

**COMPLETE THE ADJECTIVES USING:
UN - IM - IR - IL - IN - DIS**

**IF YOU'RE DIS SATISFIED WITH THE
SERVICE, WHY DON'T YOU COMPLAIN
TO THE HOTEL MANAGER?**

