

JAPANESE NATIONAL CLOTHES



ЯПОНЦЫ



KIMONO



The most famous outfit is the kimono. It is a festive robe . The Japanese holiday "City-Guo-San" is connected with a kimono.

The kimono is in the form of a long-sleeved, flared dressing gown, which is tied at the waist with an obi belt.

*An obi is a Japanese belt used to tie a kimono together. The obi is wrapped several times around the waist and tightened on the lower back with a bow. **HAORI.***

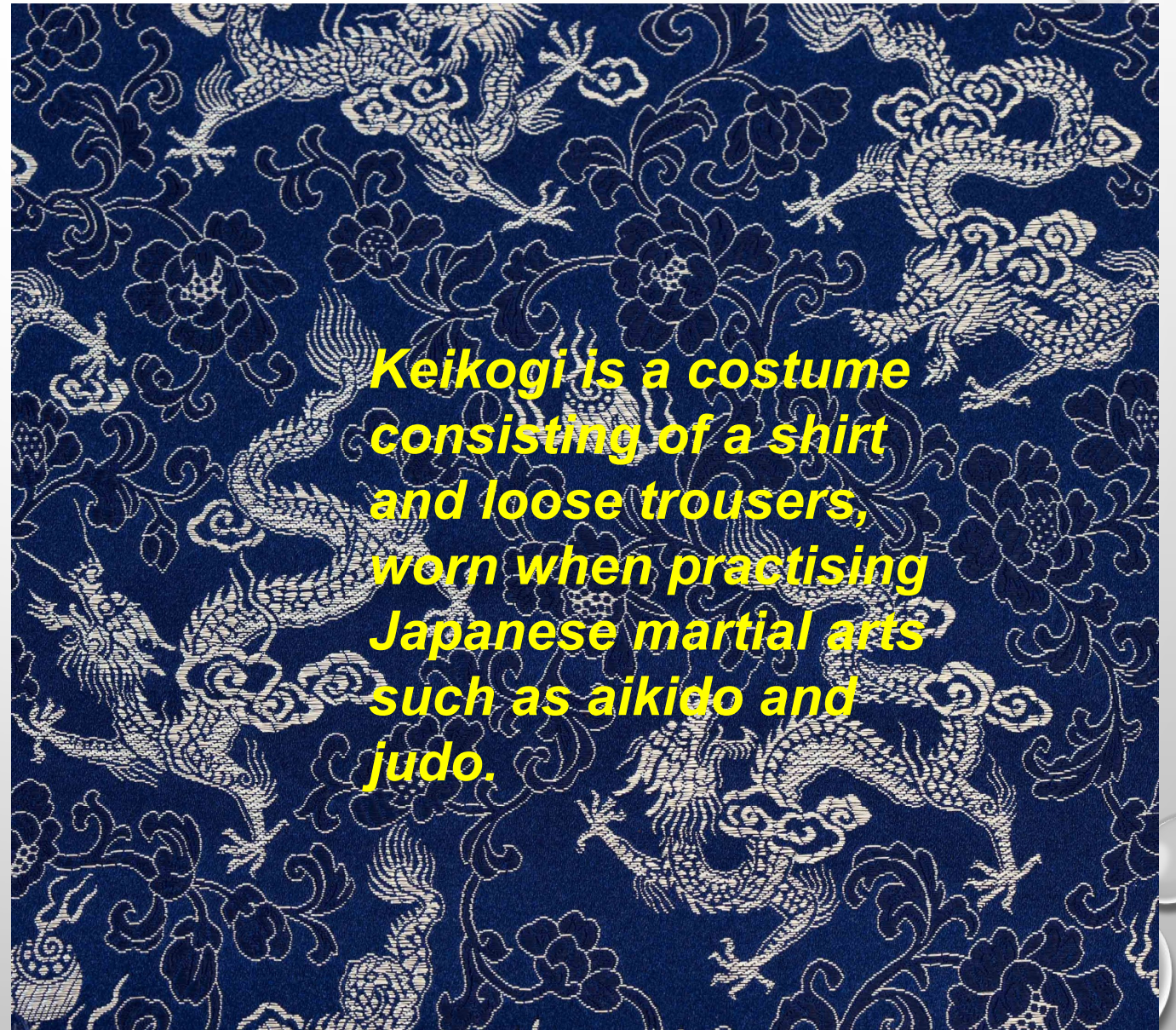


Haori were worn by women who had small children. Since in Japanese culture it was customary to carry children behind their backs, the haori was much more suited to the role of casual wear in this case.

KEIKOGI



KARATE GI



Keikogi is a costume consisting of a shirt and loose trousers, worn when practising Japanese martial arts such as aikido and judo.

TABI

Tabi - Japanese traditional socks with the big toe separated from the rest and inserted in a special compartment



GAETA

Gaeta are Japanese traditional sandals with a high wooden sole, secured by laces or straps that run from the heel to the toe and pass through the gap between the thumb and the middle toe.



YUKATA



A yukata is a lightweight kimono made of cotton or linen without a lining, worn outside in summer, at home or after a water treatment. The yukata is worn by both men and women

