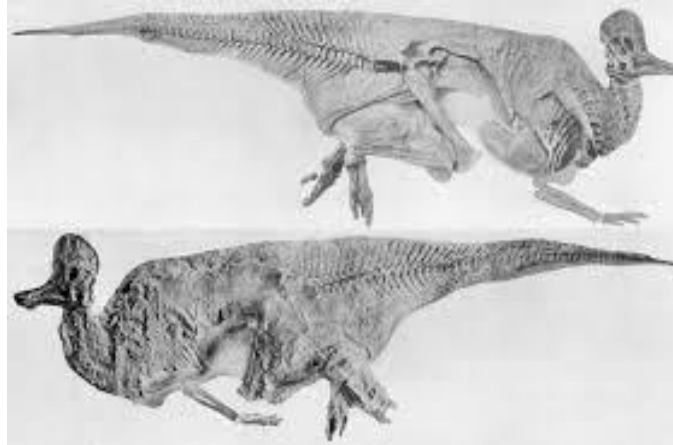


## Description:

- The family of the dino is family is a Hadrosaurid.
- It is 30-33 feet long and 6.6 feet tall at the hips.
- Hollow bony crest on top of its long head.
- Its head is shaped like a helmet and flattened at the sides.



CORYTHOSAURUS



# How it walked and ate:

- It walked on 2 legs most of the time and used 4 legs to eat lower plants.
- It is a herbivore so it ate pine needles, conifers, ginkgos, seeds, cycads and twigs!



## Who found it and where it was found:

- It was first found was in Red Deer Rivers by Barnum Brown.
- The first Specimen was almost a complete skeleton!
- The year it was found was in 1911.
- Named by Barnum Brown in 1914.
- Years it was found: 1911, 1912, 1914 and 1923!





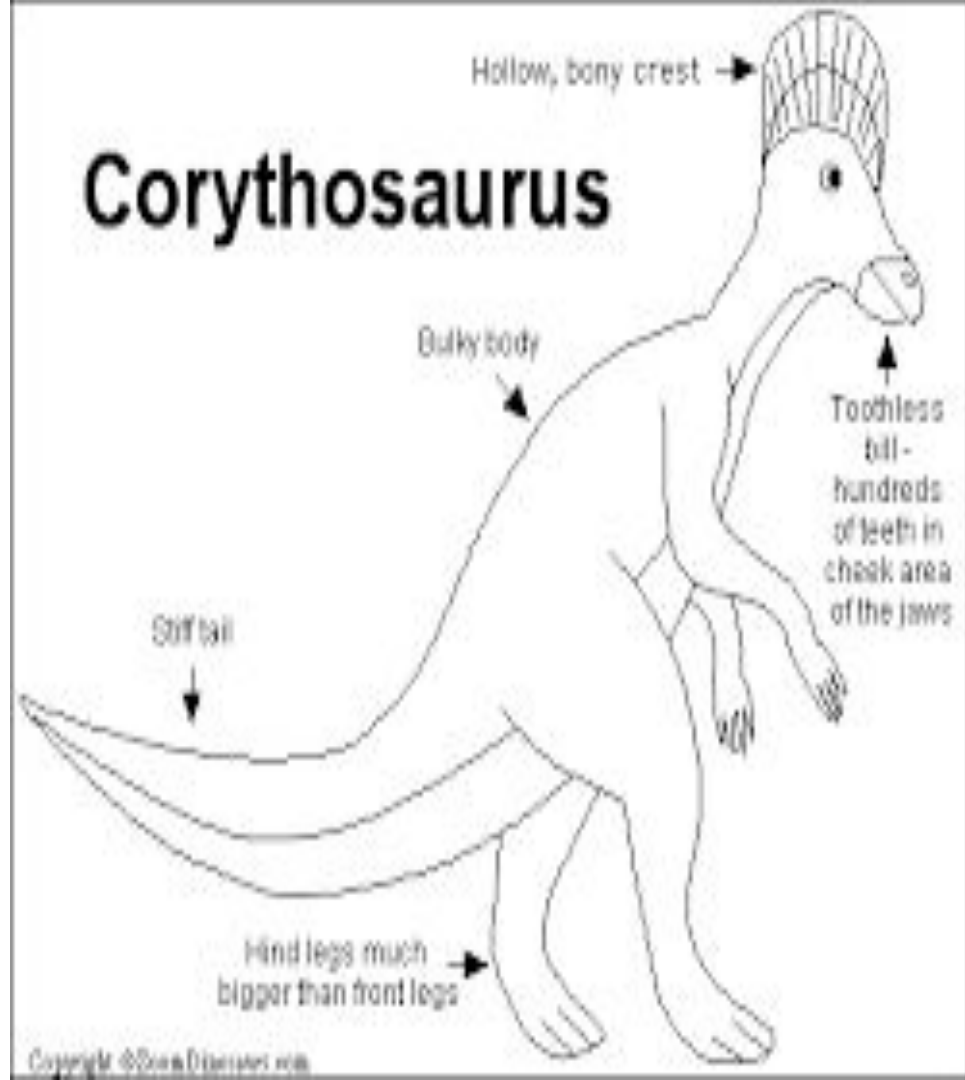
## How it lived and probably died:

- It lived in herds and went to higher ground to reproduce.
- It lived about 80 to 65 million years ago and probably died from the new dinosaur.



## Interesting facts:

- It was in the second smartest dinosaur family.
- It is pretty fast for a dinosaur who walks on 2 legs
- Barnum brown also discovered the T-Rex
- When he discovered corythosaurus he thought the curved part looked like a helmet that was worn by Corinthian soldiers long ago.



## **Sites I used:**

Wikipedia

EnchantedLearning

Have a good  
day!