

**Паспорт костюма**  
**Клуб Военно-Исторической Реконструкции «Белый Барс»**  
**Территория – Восточная Латвия**  
**Период – 11 век**  
**Незамужняя Латгальская девушка.**



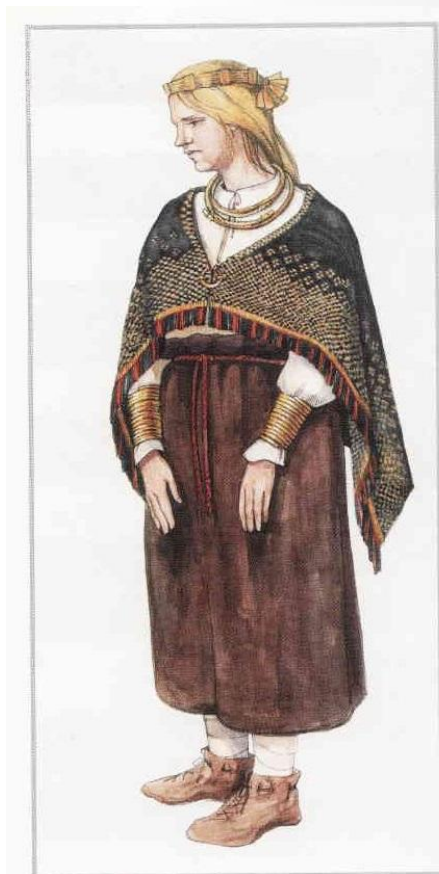
# Одежда

CEĻOJUMS LATVIJAS ARHEOLOĢIJĀ

193

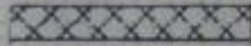


11. gadsimta latgaļu vīrieša un sievietes apģērbs. Pēc Priekules Gūģeru kapulauka materiāliem.

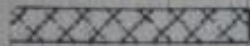
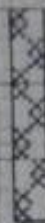


20. att. Sievietes tērpa rekonstrukcija. Zvirgzdenes Kivti, 11. gs. Zīm. L. Treija

1



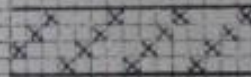
2



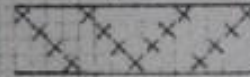
3



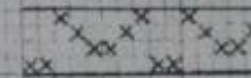
4



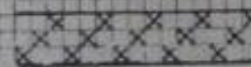
5



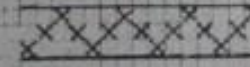
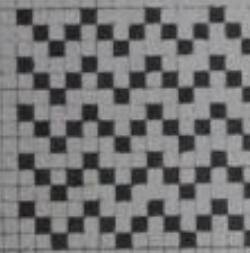
6



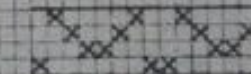
7



8

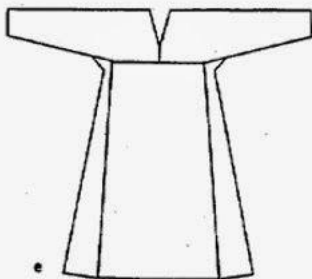
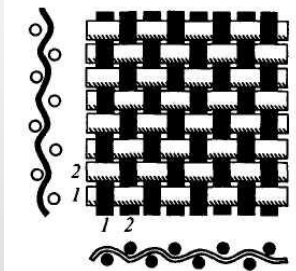
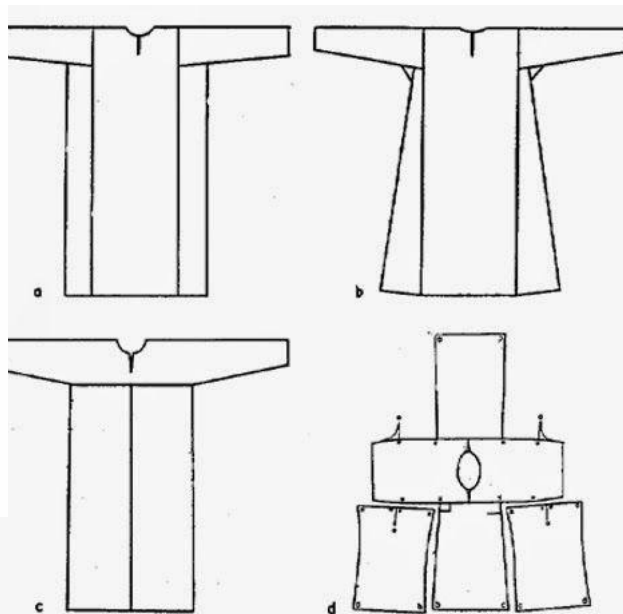
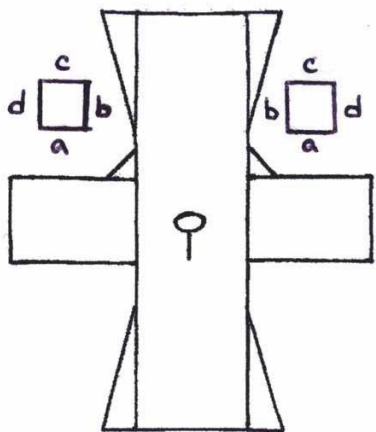


9



# Рубашка

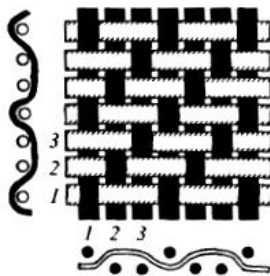
Туникообразный крой.  
Конопляная домоткань. Не  
окрашена



Kuva 12. Yksinkertaisia paitamekkoja:  
a) suometsäkuisten kansojen yleisin paitamuoto, b) kiltaisilla sivukappaleilla varustettu mekko, c) mekko, jonka perustana on pronssikauden tammiarkkuhautojen puseroiden leikkaus, d) Jyllannista (Jelling, Møgelumose) löydetyn nahkamekon kaavat Margarethe Haldin pirttimäni (Norslund 1941 kuva 48), e) Euran puvun alusmekon edellisen pohjalta suunniteltu malli.

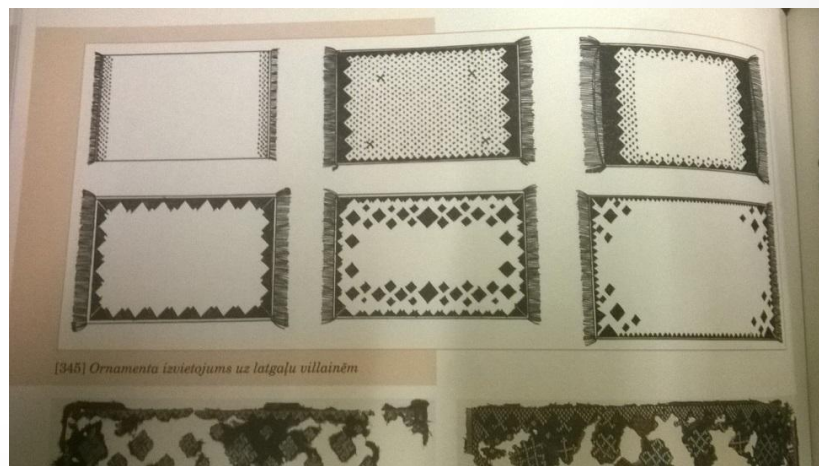
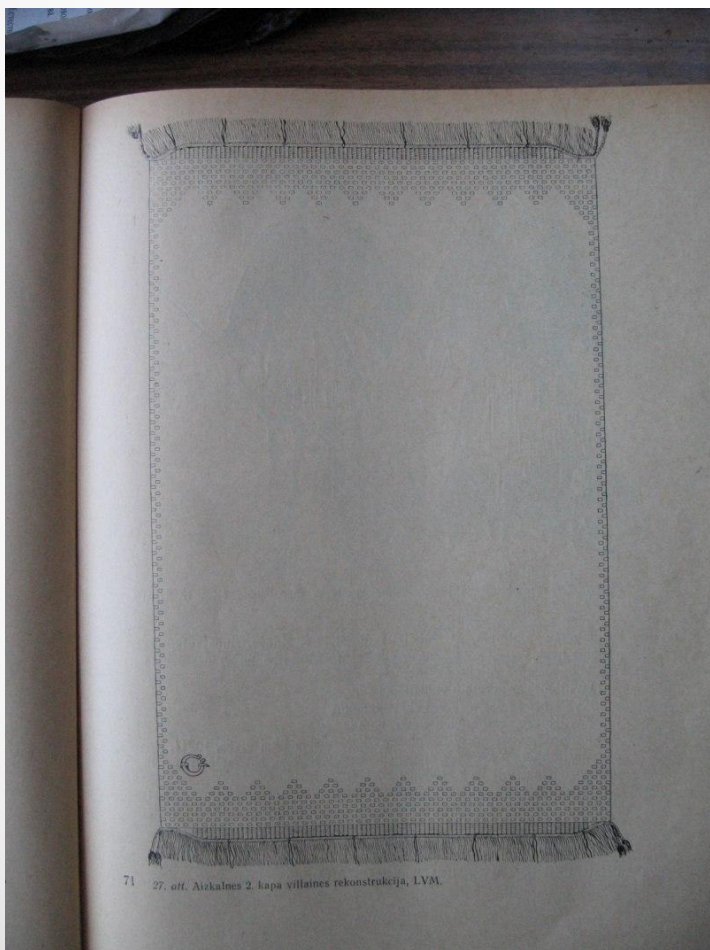
# Юбка

Крашение фабричное.  
Идентичный краситель -  
Слабый раствор дуба+  
железный купорос.



# Вилayne

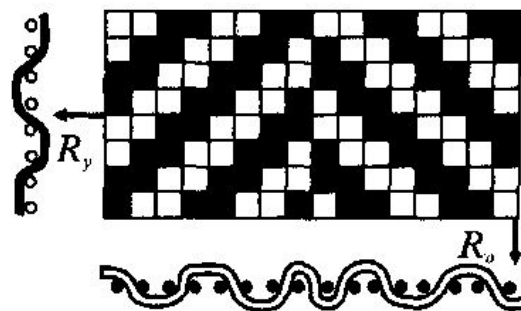
Шерсть от Бирны. Саржа 2/2 .  
Крашение Индиго



# Κοφτα



# Обмотки

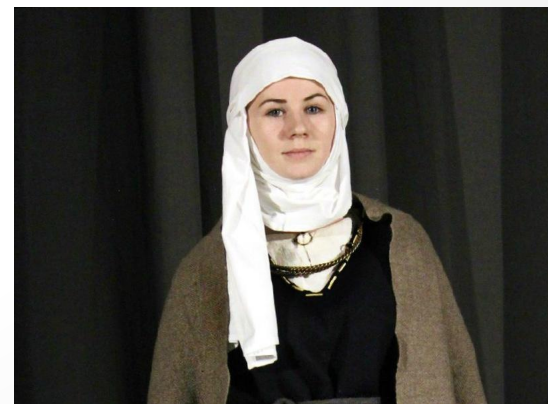




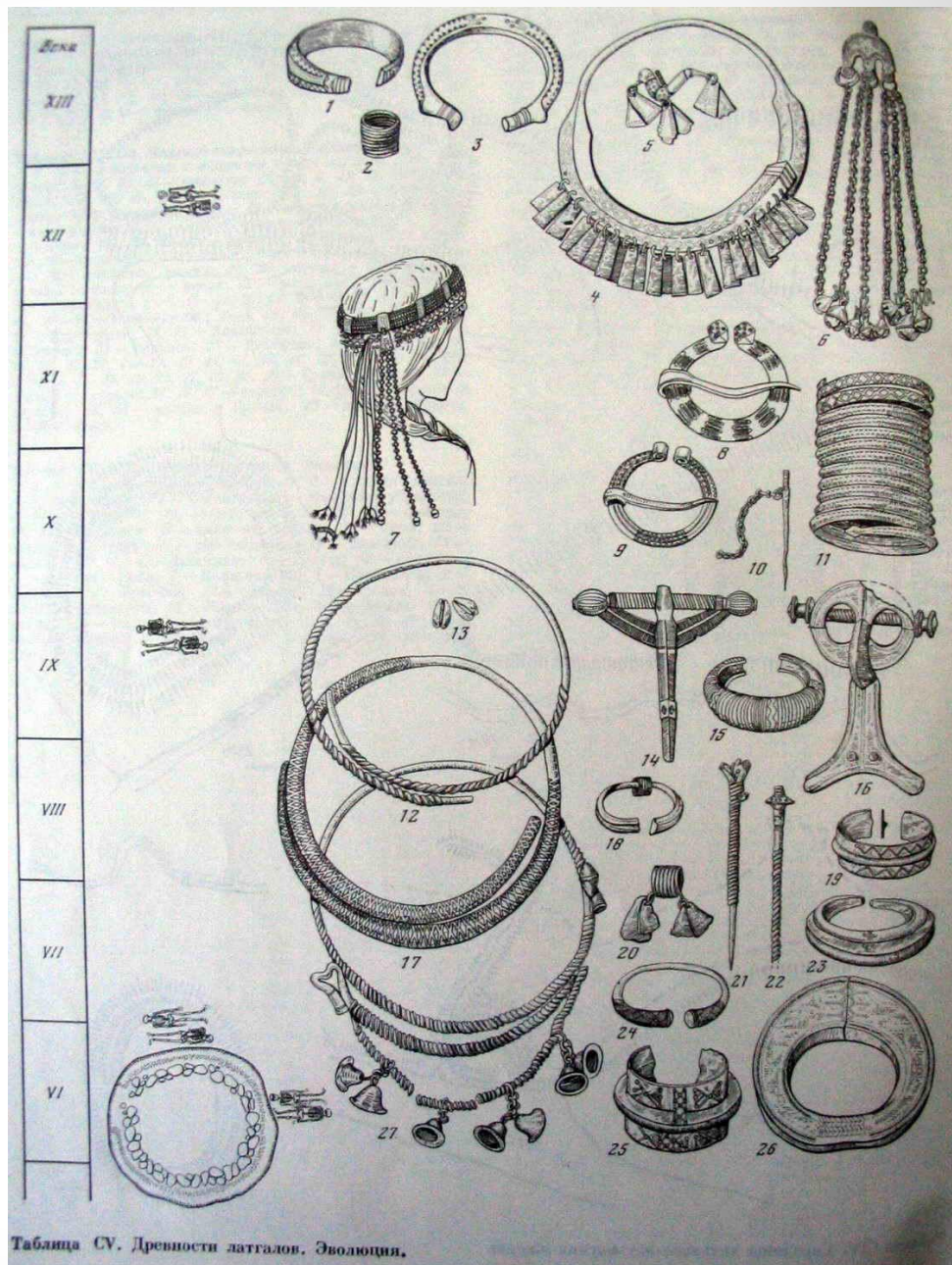
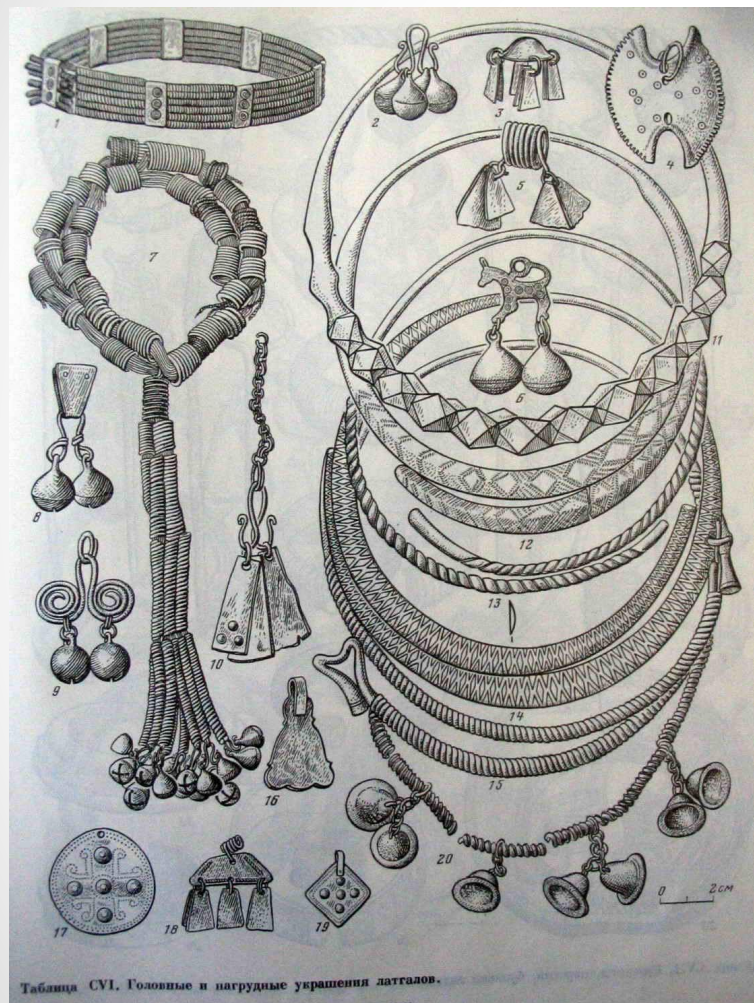
# Пояс



# Платок



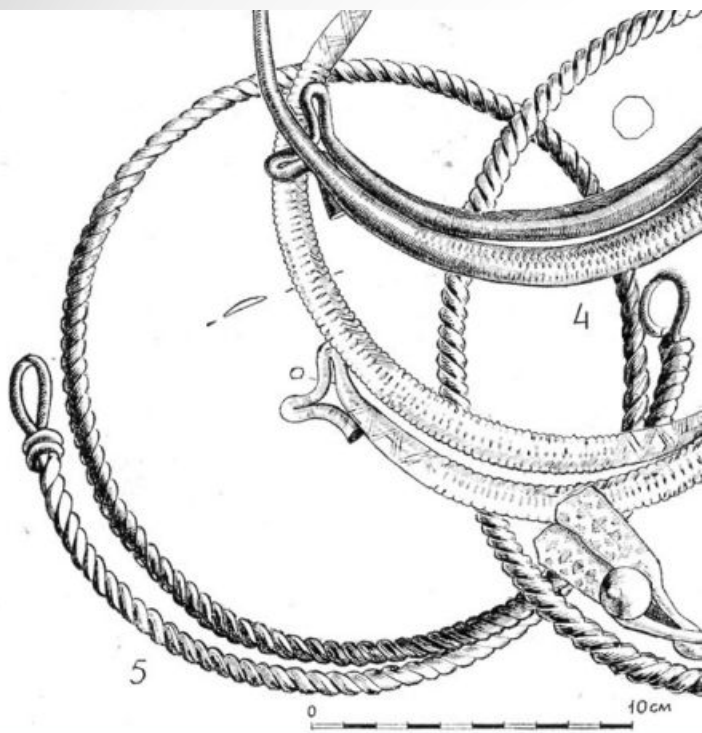
# Украшения

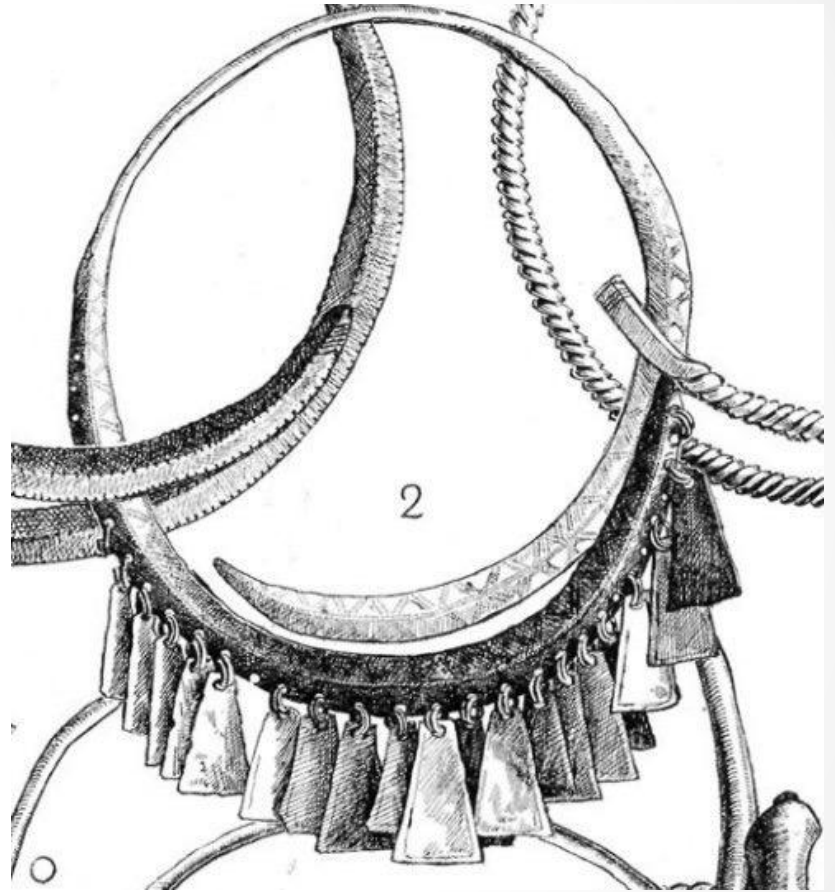


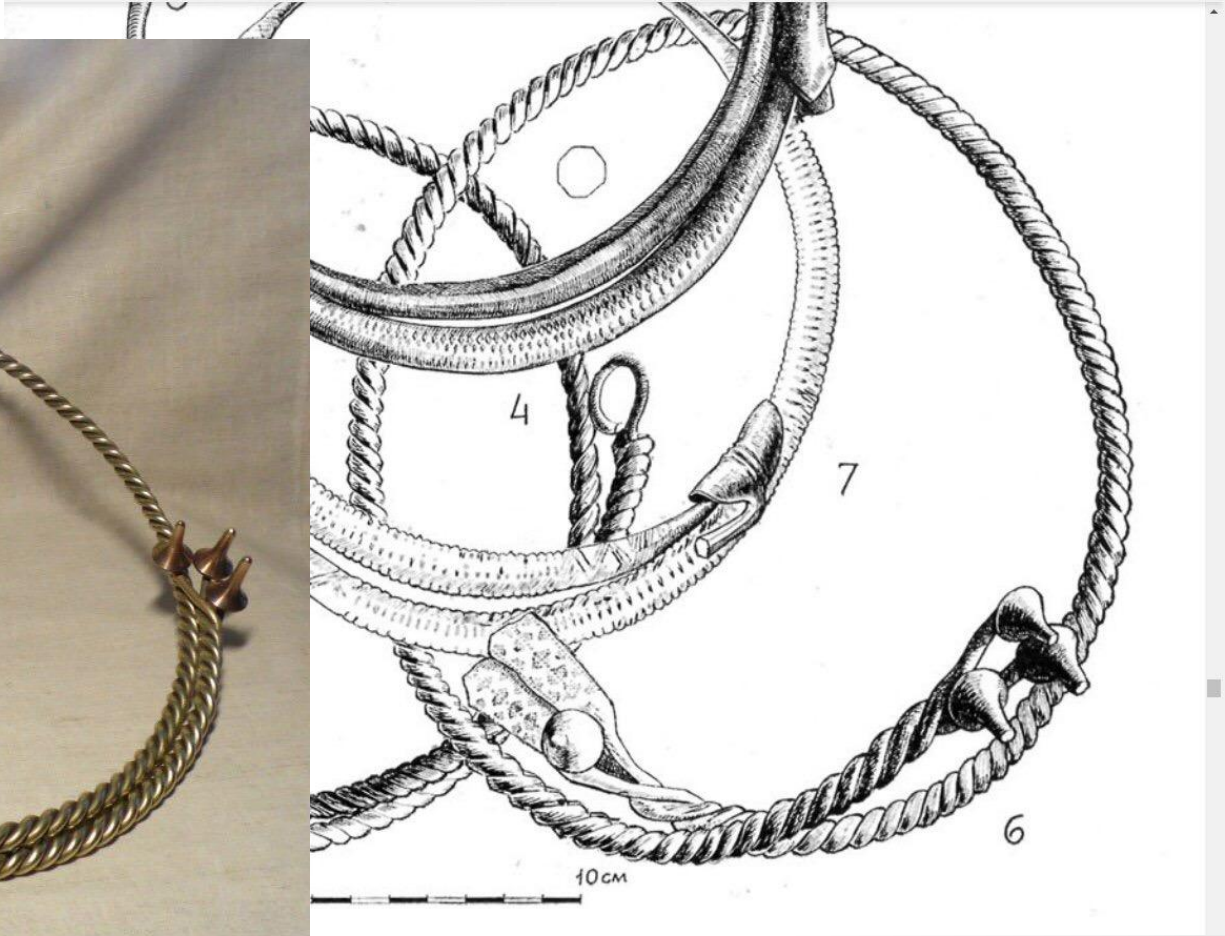
# Венчик



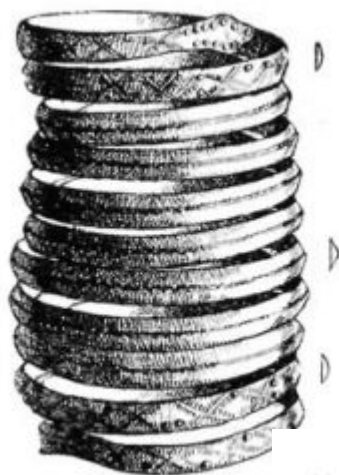
# Гривна







# Спиральные браслеты



11

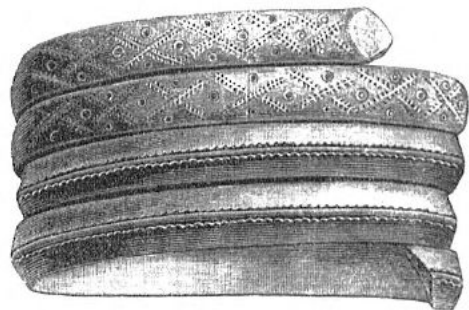
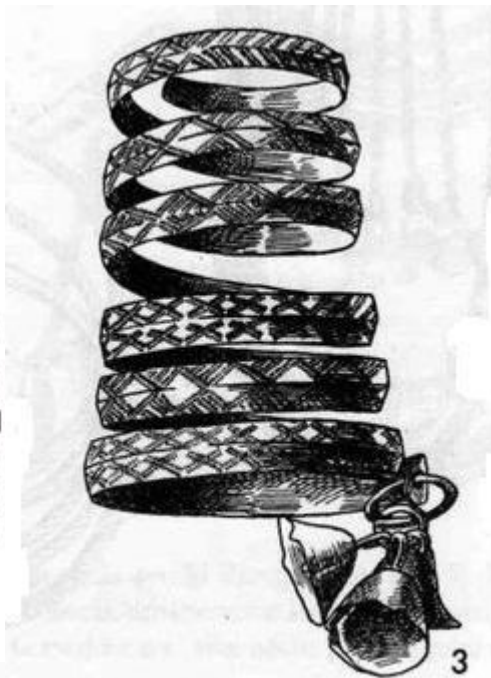
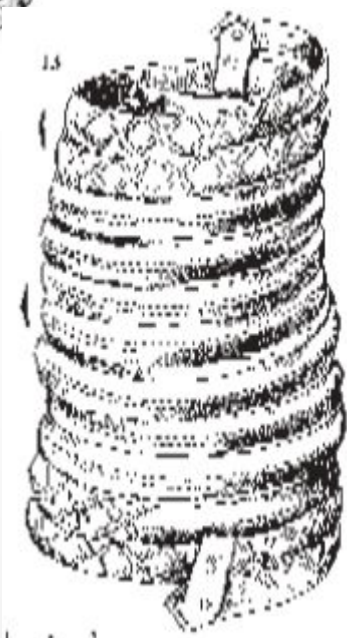


Рис. 25. 1/1.



3





# Браслеты пластинчатые



13

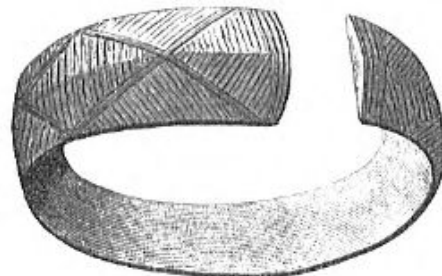


Рис. 30. 2/3.



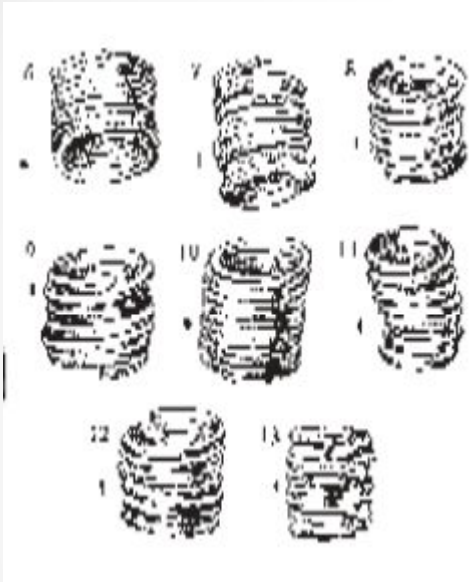
15



# Ожерелье



# Перстни



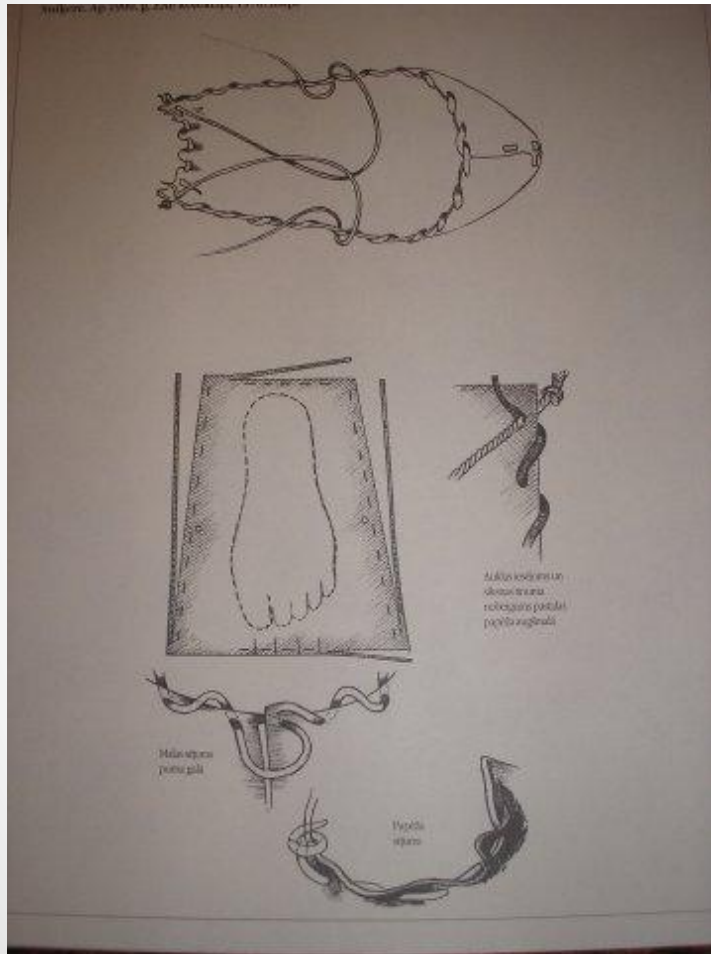
# Фибулы



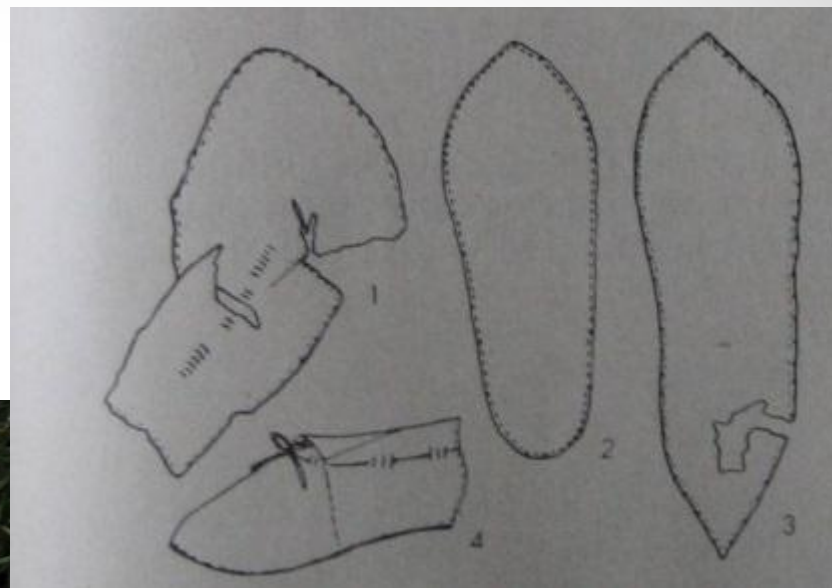
10



# Пасталы



# Ботинки



# Нож



Abb. 207 c



Abb. 207 c. Ksp. Hellvi, Ire. SHM 23140:230A. Die Messerscheide ist rekonstruiert.