



Ledmyplace...

Upgrade to Efficient Lighting

LED Plug & Play T8 Bulbs

This fixtures are indoor lighting appliances that are most commonly used in offices, homes, and other places.



Index...

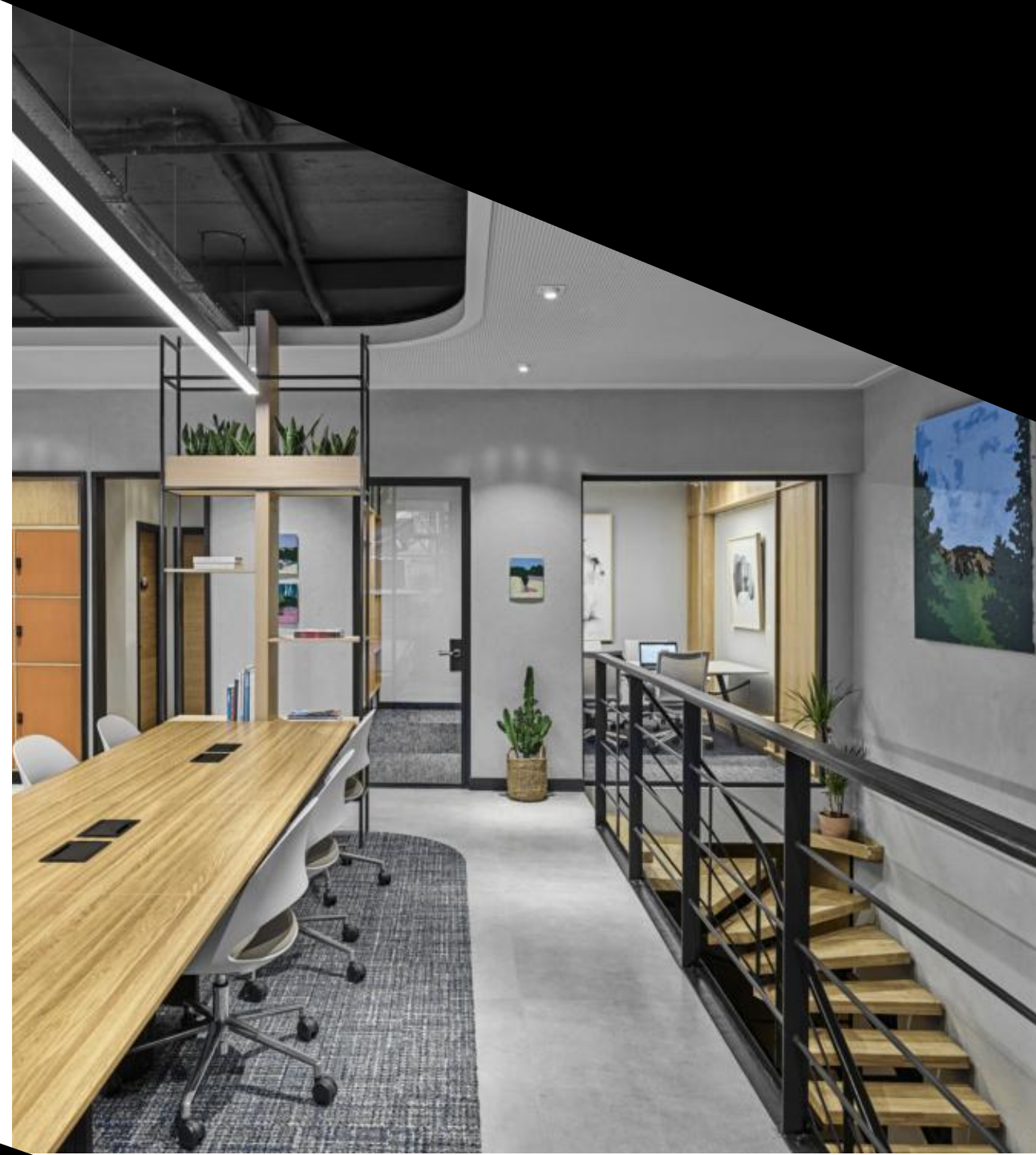
- T8 LED Tube Lights
- The areas of applications are
- Types
 - Type A
 - Type B
 - Type A +B
- Benefits
 - Product certification
 - Warranty
 - Lifespan
 - Energy-saving
 - Flicker-Free
 - Low maintenance



Upgrade to higher quality lighting with plug-and-play LED T8 tubes. They use half of the energy than traditional fluorescent tubes.

These lighting fixtures meet **ULC and DLC** standards which makes them rebate eligible for the customers.

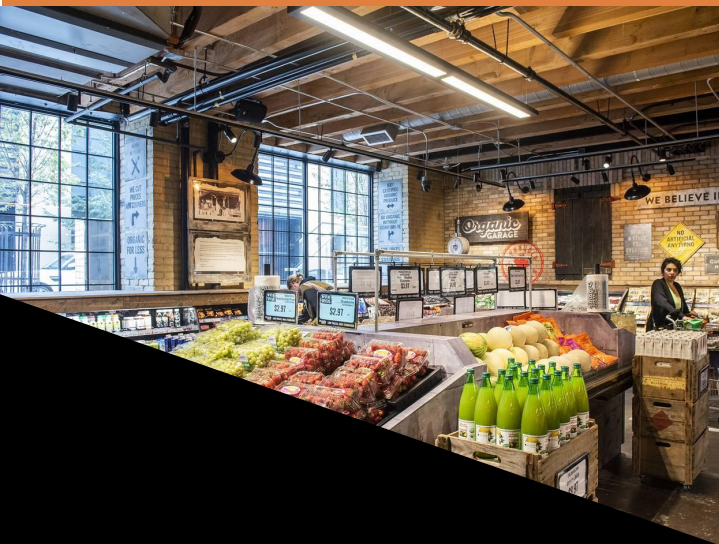
Plug-and-play LED T8 tubes are easier to install and power-efficient than fluorescent tubes. They are available with or without ballast.





The areas of applications are:

- Schools
- Offices
- Retail outlets
- Hospitals

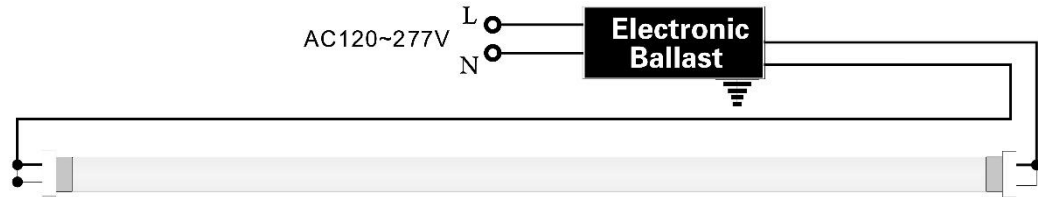


LED Tube Lights...

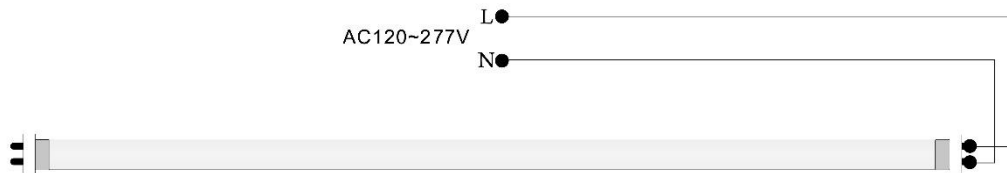


Types

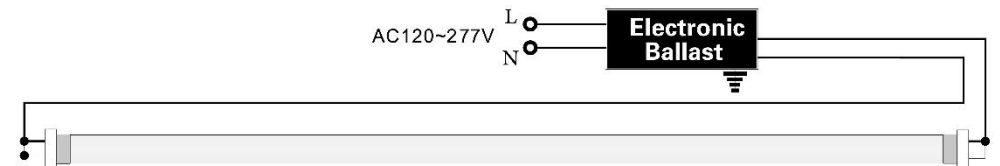
- **Type A:** These tubes have an internal driver which allows them to operate smoothly and do not require installation changes.



- **Type B:** The internal driver powered directly by the existing fixture line voltage. They are either single-ended or double-ended.



- **Type A+B :** It is the combination of Type A and Type B. It can **work with the existing ballast** of the fixture or without it.



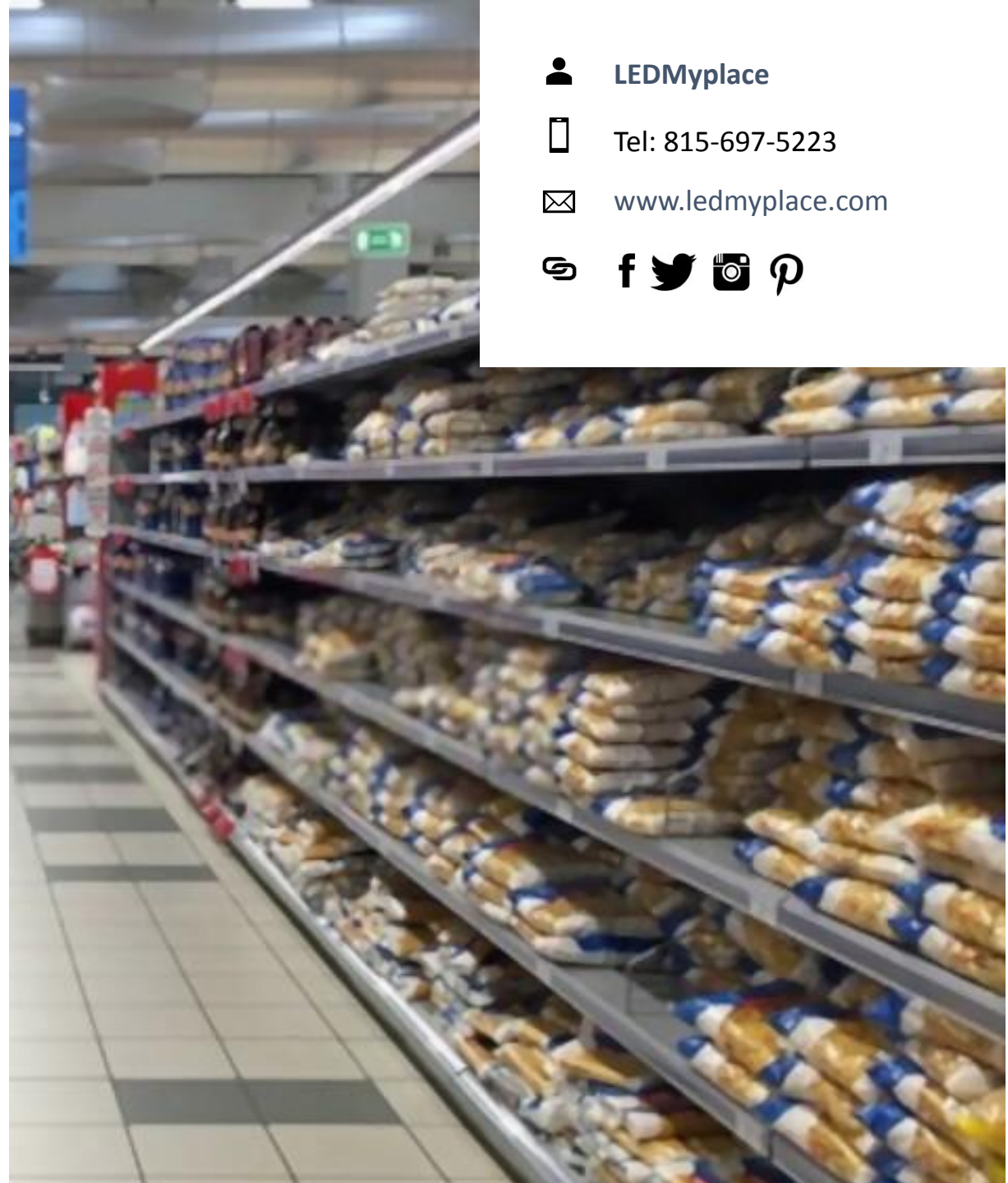
Benefits


- **Product certification:** ETL, DLC, and UL certified
- **Warranty:** 5 years
- **Lifespan:** 50,000 hours
- **Energy-saving:** Saves on power consumption by 80%
- **Flicker-Free:** They start and switch off instantly without any flicker.
- **Low maintenance:** Regular maintenance is not required.



THANKS FOR ATTENTION

Visit www.ledmyplace.com and avail
the product to your doorstep in the most
hassle-free way.



-  LEDMyplace
-  Tel: 815-697-5223
-  www.ledmyplace.com
- 