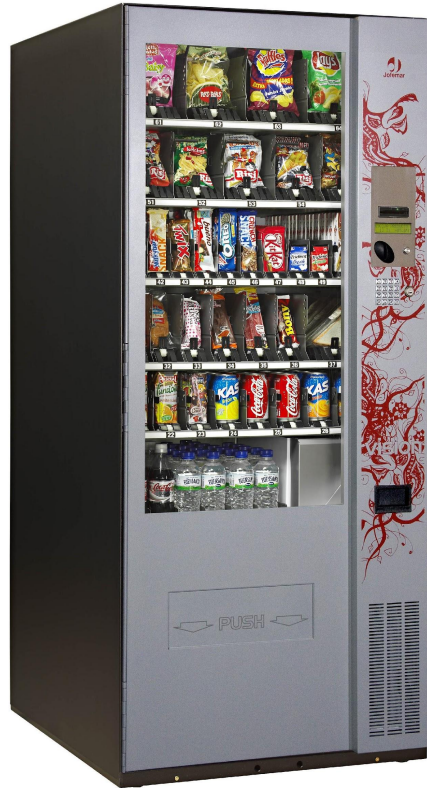
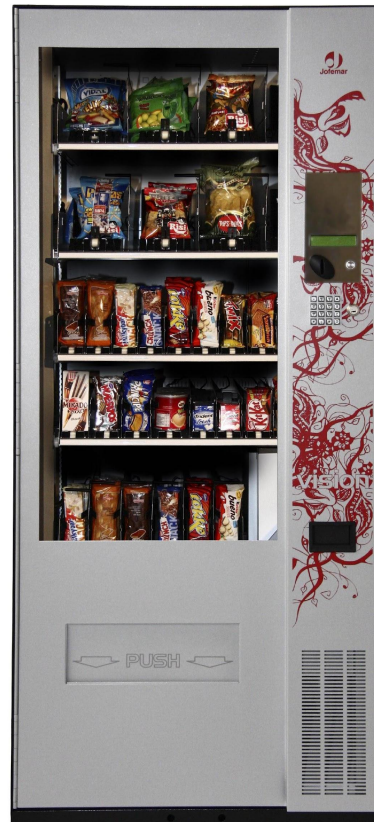


New series of Vision machines.



SnackPlus



EasyCombo

[Back to Start](#)

Jofemar Vending machines use the revolutionary Vend system design and made by Jofemar, Easy Flex, an unique system on the vending market which increases capacity by avoiding the intermediate spaces between the products.

Since 1996 Jofemar has built on machines conveyors systems, elevator delivery and vend detection by photocells, therefore each new model on the market has an extra insurance given by the experience of Jofemar R&D team and the perfection the Easy flex system has achieved.

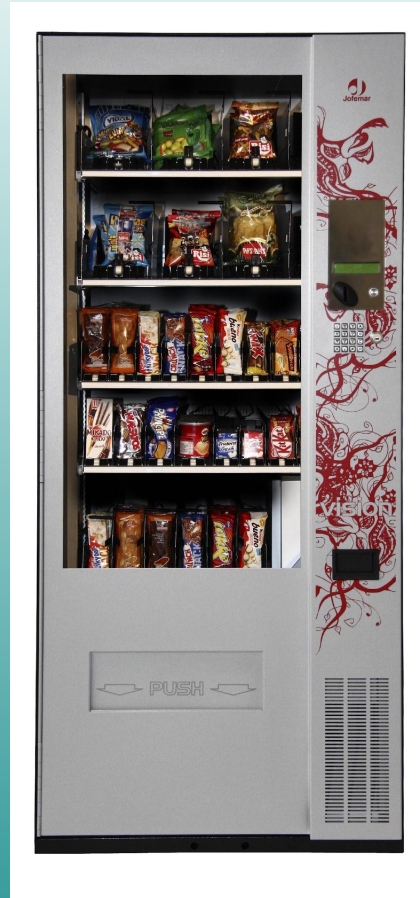


[Back to Start](#)

SnackPlus

The perfect machine for the sales of any kind of product at ambient temperature.

Its Volume/Capacity relationship ensures an autonomy without reloading no other machine on the market can offer.

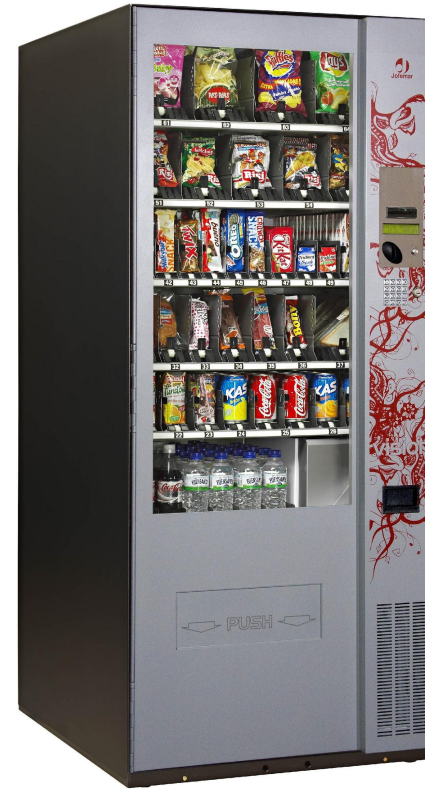


[Back to Start](#)

EasyCombo

Its cooling unit programmable between 4 to 12 degrees allows for the sale of any cold drinks, sandwiches and snacks.

By its differentiated temperature zones the consumer will always find their favorite products to its proper temperature.



[Back to Start](#)



Slave machine unit.

To increase the capacity of any sales point, the slave unit is the ideal complement which can be added as a peripheral of the main machine.

The slave unit contains just the product channels, the selection and payment will be made on the main machine.

It can be install together with any of the other models of the Vision series.



[Back to Start](#)

EasyFlex vend system:

All Jofemar glass front merchandisers have the most advanced and profitable system on the market, the EasyFlex.

The spirals avoiding, using a product pusher for all the line, increases capacity at the same time as the product reload is made quicker.

Fully FIFO (First in, first out) as the new products are loaded behind the remaining ones.



Fast to load, fully FIFO, huge capacity.



[Back to Start](#)

EasyFlex vend system:

Each Channel is adjusted without tools, on a moment the machine can get prepared to sell the kind of package demanded by the consumers.

The product delivery speed is programmable so products with different thickness and weight can be sold correctly.

Thanks to this innovative system is the machine which is adjusted to the product and not the other way around.



Easy adaptation of new products, adjustment of all the elements without the use of tools.

[Back to Start](#)

EasyFlex vend system :

For the operator convenience two different type of channels are able to be install:

Channel with a pusher and without product separators, this type of channel is the recommended one for products on rigid and regular packages.

Channel with a pusher and product separators, this type of channels is the recommended one for product on irregular or soft packages, such as chips.

For both channels types there is the possibility to use other accessories such as narrowers for thin products.



Channels without product separators, recommended for regular packages.



Channels with product separators, recommended for soft packages.

[Back to Start](#)

EasyFlex vend system:

EasyCombo and SnackPlus: on top of the product collection box are located the delivery sensors, these ensure the correct product entrance on the collection box.



Vend detection using a photocells system, guaranties customer satisfaction.

[Back to Start](#)

Machine Structure:

SnackPlus, EasyCombo:

Product trays are extended from side to side of the machine.

As all the payment systems are located on the door, this allows for a better distribution of the internal space.

Up to 8 trays for up to 10 channels each, and a lower one for up to 7 channels, product diversity gets assured.





Machine Structure:

Cabinet laminated Steel of 1,5 mm thickness.

Security lock with 3 anchorage points.

Laminated glass front with intermediate space, total thickness of 22mm.

Anchorage Kit for the machine to the floor or to the wall.

As on all Jofemar machines, the best anti-vandalism protection for your sales points is the first premise considered.

Cashbox protected with lock, option for auto-bloking cashbox cover, once extracted gets closed with its own lock



Acceso a hucha con cerradura

[Back to Start](#)



Machine Structure:

Option for anti-vandalism coins entrance.

On these models it can be chosen between the standard coin entrance or the security coins entrance which avoids liquid spillage or the insertion of other elements.



Refrigeration system Easycombo

Ecological gas R-134-A, CFC free

3 refrigerated air entrances on the cabinet side at different heights, allows the adjustment of the refrigerated cabinet zone. This way some or all the trays can be used for refrigerated products.

Cooling unit fully accessible by the machine front. Is not needed to move the machine for maintenance.



[Back to Start](#)

Programming and control

Access to all the functions including prizes, sales, accountancies, channel linking, and others using the programming button at the back of the machine door.

Accountancies data output port for hand held printer or accountancies terminal.

Optional Modem and telemetry options, with “out of products” and malfunctions alarms.

Cloning among several machines, channels linking, prices, and other programming options.



[Back to Start](#)



Capacities:

Chocolates:

- 30/50 per channel, up to 10 channels per tray

Buns:

- 20/25 per channel, up to 9 channels per tray

Chips bags:

- 9/12 per channel, up to 5 channels per tray

Can or bottle drinks:

- 8/9 per channel, 9 channels per tray

Sandwiches:

8 per channel, up to 6 channels per tray

Reference capacity, as the whole of the line is used for storage without separations, any product capacity can be properly calculated measuring the XXcm of the channel by the product thickness.

[Back to Start](#)

Dimensions and weight:



Weight: 320Kg



[Back to Start](#)

Payment systems:

Coin mech J-2000 on MDB protocol with T15 coins validator:

Coin analysis using diameter sensors, metal alloy sensor, and double magnetic sensor.

String detection by photocell system at the validator entrance.

5 return interchangeable tubes, programmable for up to 5 coin values.

Fully control of stored and returned coins.

Optionally executive protocol with accountancies storage.



[Back to Start](#)

Payment systems :

Optional BT10 bill reader:.

Up to 6 different bills by their four different sides.

Escrow mode allows for the return of the last inserted bill on case the sale is not done, avoids loosing of change in the coin mech.

3 Optical sensors, an infrared sensor an a magnetic one.

Anti-fishing mechanism.

Interchangeable stacker with a lock system.



[Back to Start](#)

Payment systems:

Optional J130 card/key reader.

Credit reload right at the machine of chip cards, contactless cards and contactless keys.

Unlimited number of users.

Fully control and extraction of accountancies, sales and reloads over 65.000 users.

Different user levels, allows assign different discounts, time assignments, reload promotions, the value of all this benefits can be setup on different levels.



[Back to Start](#)