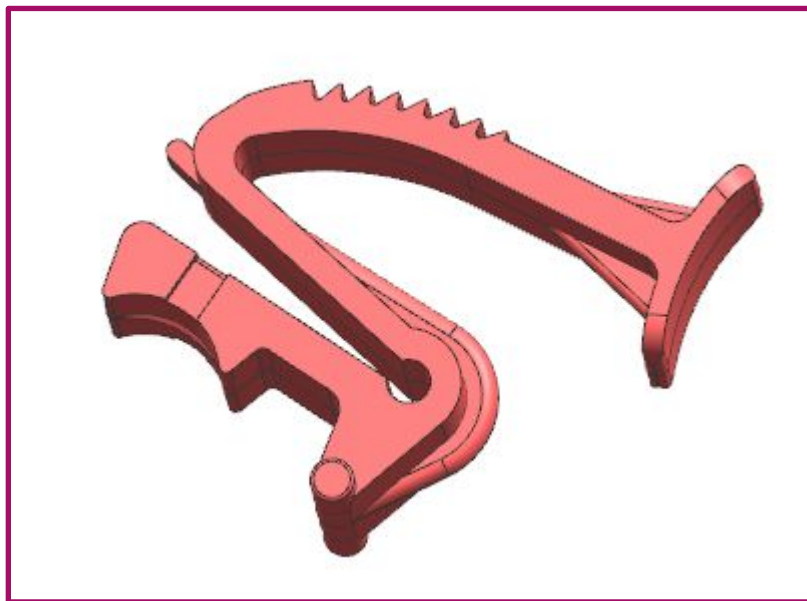
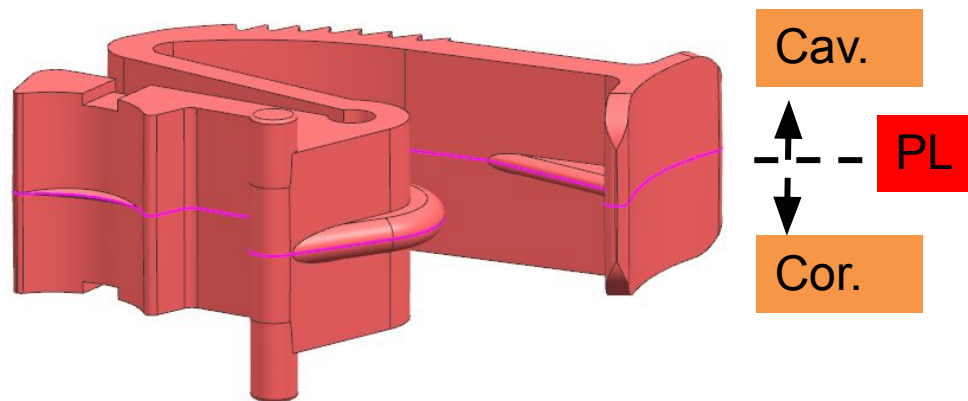
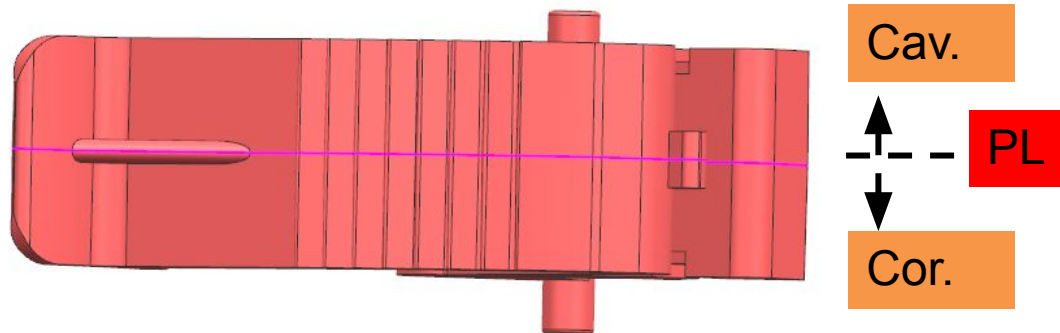


1 产品介绍

1	产品编号	
2	产品名称	13009.02
3	数据版本	V1
4	产品大小(mm)	24X52X45
5	产品壁厚(mm)	
6	产品材料	Polyamide PA 30%
7	产品收缩率(%)	
8	产品表面处理	抛光



2 P.L 确认

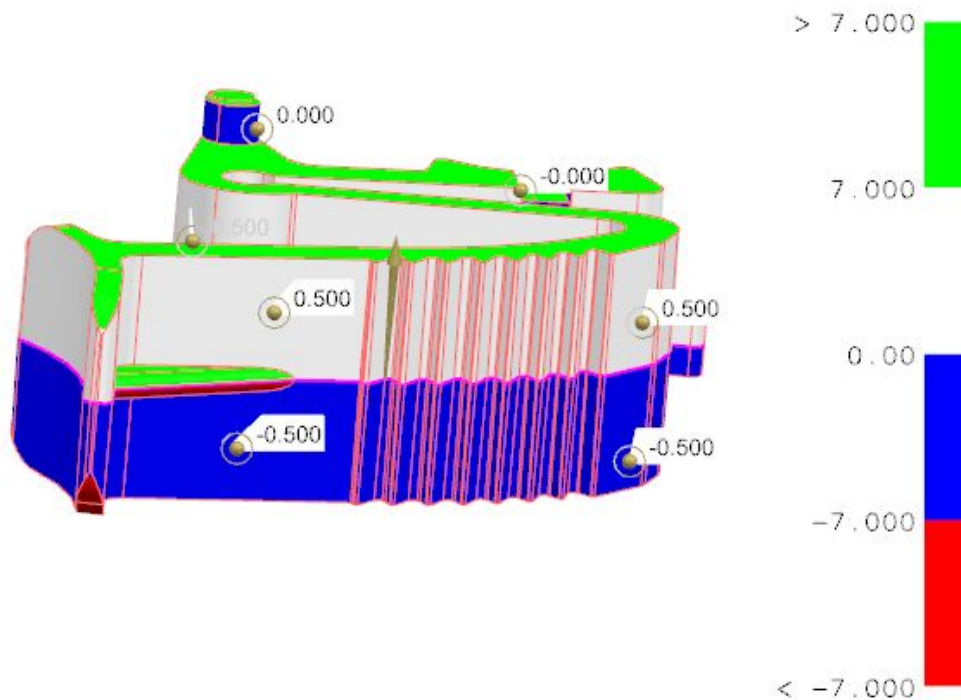


问题描述 issue

客户回复 customer reply

产品分型从粉色线过，请确认。
The pink line is parting line, please check it.

3 脱模角度分析



问题描述 issue

型芯型腔脱模角度相同会导致产品牢型腔风险。

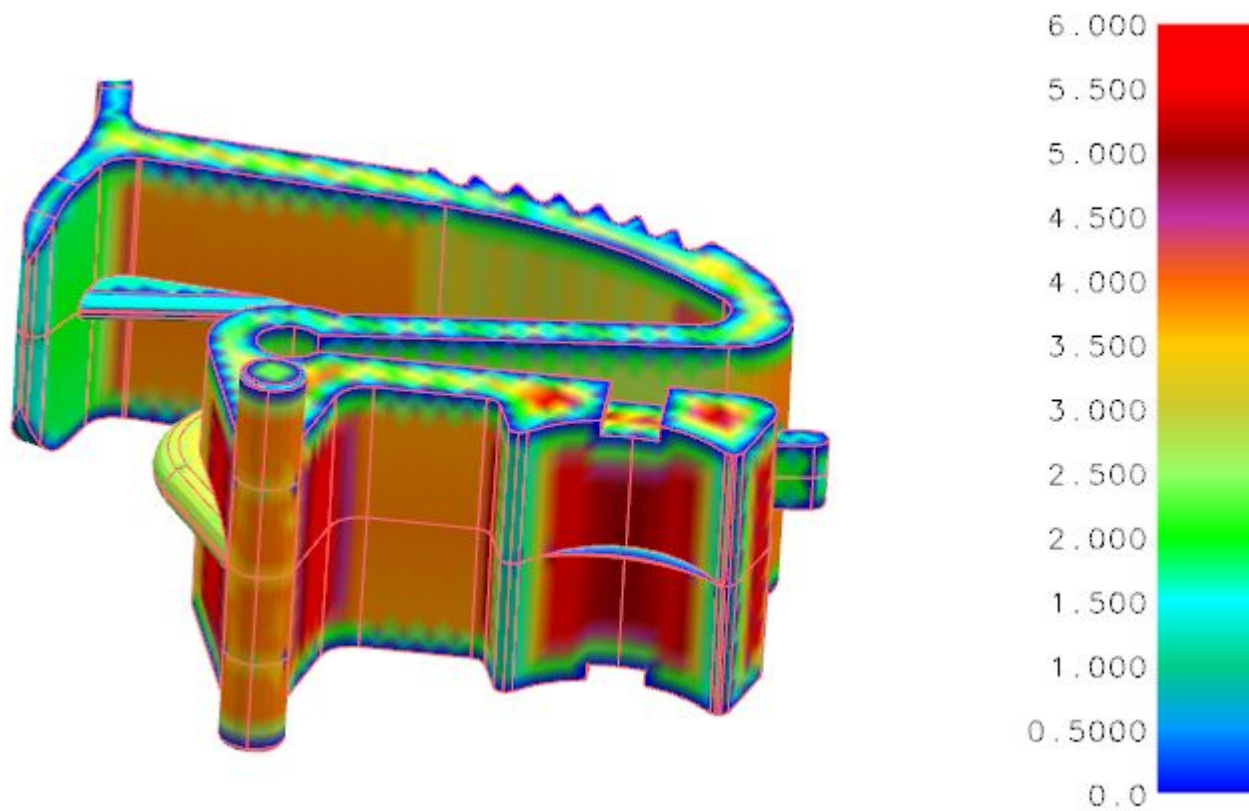
建议:型芯侧非作用面增加倒扣(皮纹或倒扣特征)保证产品留型芯。可增加特征面需要客户指出。

There will have risk of sticking mold due to the direction of demold of cavity and core is the same.

KAIHUA suggest: Make undercuts (texture or undercuts) at non- working surface to ensure the product will keep at core side. Please inform which area can make texture or undercuts.

客户回复customer reply

4 壁厚分析



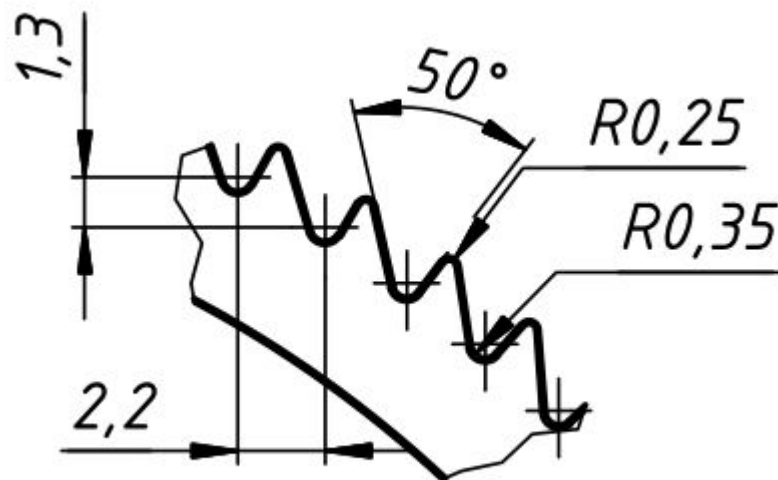
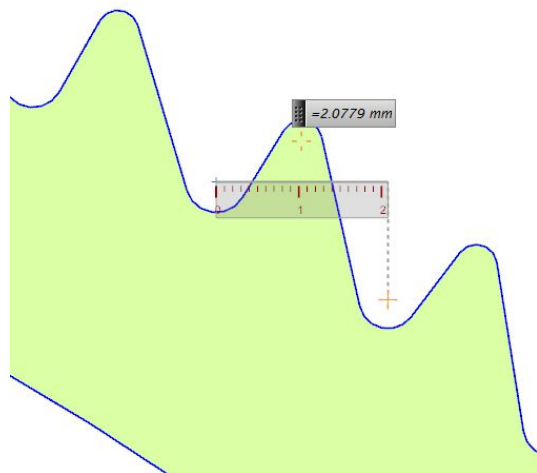
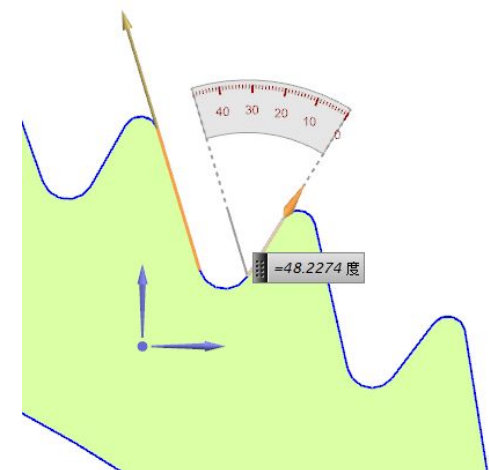
问题描述 issue

客户回复 customer reply

产品壁厚如图分布。
thickness of product is shown as picture.

The

5 产品与图纸对比



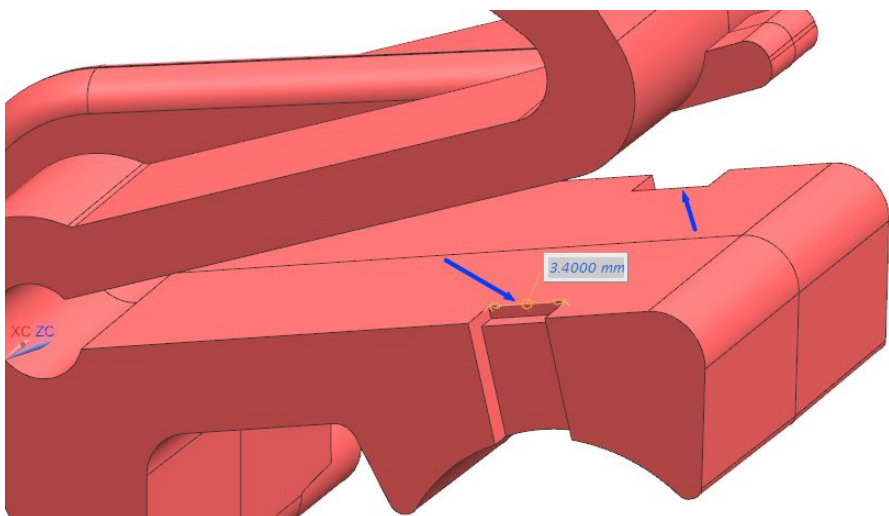
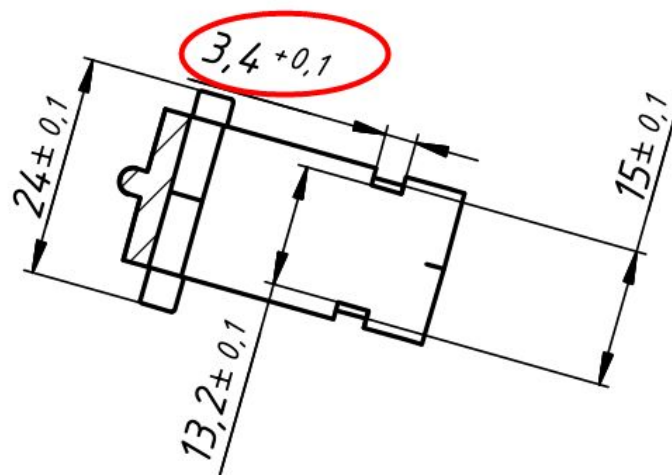
问题描述 issue

客户回复 customer reply

产品与图纸对比存在误差, 请确认
There are some difference between 3D data and drawing.
Please check which one is correct.

6 产品与图纸对比

A-A (1:1)



问题描述 issue

客户回复 customer reply

图纸标注为上公差我司建议在模具上将槽宽做到
3.5mm, 请确认

In 2D drawing, the tolerance is 3.4+0.1. Kaihua suggest:
make the width of the groove to 3.5mm directly.

WE ARE JUST ON THE
THANK YOU. WAY

