

A nighttime photograph of the Liverpool city skyline. On the left is a large, multi-story brick building with many windows. In the center is a tall, thin chimney. On the right is a large, ornate building with a dome and several towers, including the Royal Liver Building. The city lights are reflected in the water in the foreground.

PORTS OF ENGLAND

ПРЕЗЕНТАЦИЯ ВЫПОЛНЕНА СТУДЕНТОМ ГРУППЫ ГТ-1С ТИТОВЫМ
ДЕНИСОМ

A large cargo ship is docked at a port at night. Several yellow cranes are visible, some with their lights on. The ship is dark, and the water reflects the lights from the cranes and the ship. The sky is dark blue.

Introduction

- For years Britain held the position as a Maritime nation.
- This was facilitated by the geographical position of the countries located on islands England, surrounded(окруженных) on all sides by water, so the ports of England for a long time held first place in terms of turnover(объему оборота) and allowed the government to maintain the economy at the expense of regular transportation.

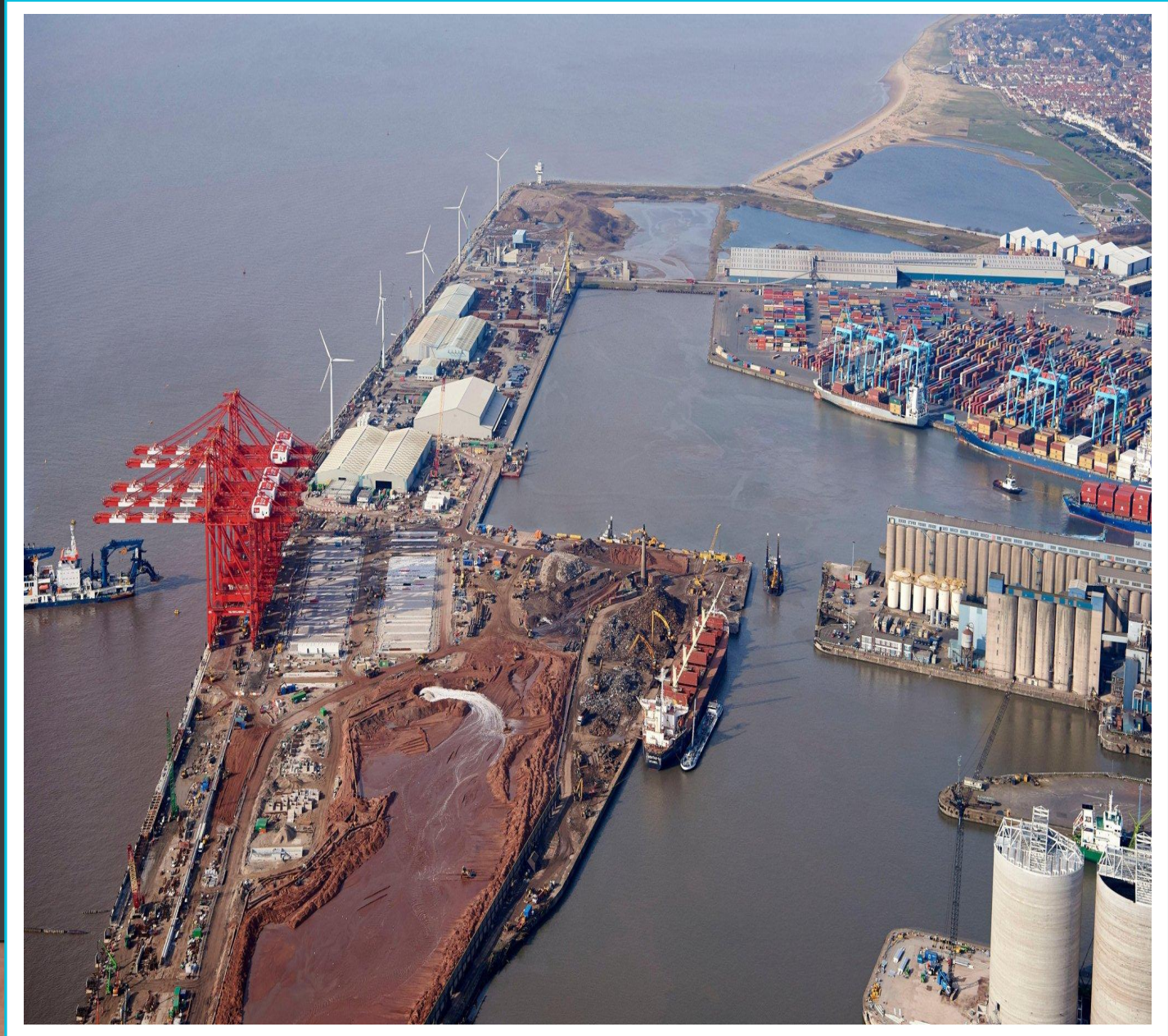
THE LARGEST PORT IN ENGLAND

- London is the largest port, the second busiest in the world. Located on the river Thames.
- More than 70 port terminals located within the boundaries(в границе) of the three regions of England: greater London, East and South-East England. The annual turnover(годовой оборот) exceeds 50 million tons. The **second largest port** in the country after "port of Grimsby and Immingham". Provided more than 30 thousand jobs.



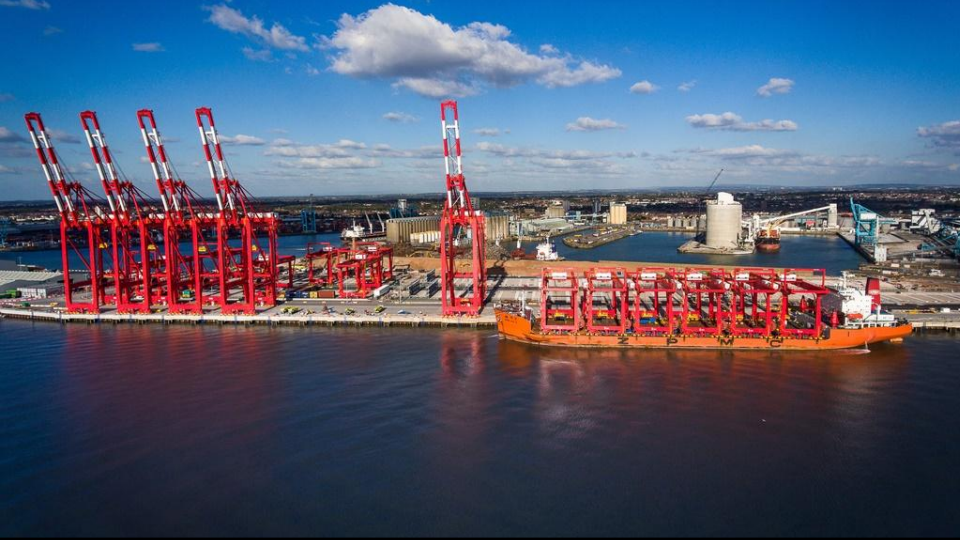
LIVERPOOL MARITIME MERCANTILE CITY

- *Liverpool Maritime Mercantile City*—part of the English city of Liverpool, included in the UNESCO. The concept of "port of Liverpool" has six places in the centre of the city, including the city's Pier head, Albert Dock and Stanley Dock, areas of streets William Brown Street, Duke Street and the Water Street. Each of these objects reflects a particular period of Maritime history of Liverpool. The total area of protected area is 136 hectares.



- The Liverpool port was included in the UNESCO in 2004.
- In 2012 he appeared in the list of world heritage sites under threat of destruction, because of the plans of the British government for the construction of Liverpool Waters.






An aerial photograph of Southampton, UK, showing the port area with numerous shipping containers, cranes, and large cargo ships docked. The city of Southampton is visible in the background, with its dense urban development and surrounding green spaces. The text is overlaid on the image, with the title in orange and the description in white.

The largest channel port of La-Mansh.

Southampton the largest of the
channel ports of La-Mansha . It is
situated in a large natural
harbour(гавани), protected from
the storms of Wight and exposed to
a double tidal(подверженной
двойному приливу) — from West
and East, alternating every 3 hours.

- 
- A nighttime photograph of a port, likely Southampton, showing several large cranes and ships docked at the quay. The scene is illuminated by warm, yellow lights, and the lights are reflected in the water in the foreground. The background is dark, with some distant lights visible.
- The import of Southampton stand food products — fruits, early vegetables and potatoes, meat, butter, grain, other commodities — oil and wood.

Southampton is a passenger outport of the city of London and the final destination of passenger Express trains between America and England. Via Southampton is more than 60% of passenger sea traffic in the UK.

The largest container transport in England.

- Felixstowe is a town and sea port on the North sea coast, in Suffolk, England. The settlement(поселение) got its name from the vicinity(близости) of the Port of Felixstowe, the largest container transport in the United Kingdom and owned by Hutchinson Ports.






MANCHESTER SHIP CANAL

Manchester Ship Canal is a navigable canal in the UK. Connects the town of Manchester with the Irish sea via the estuary of the river Mersey, crosses the South Lancashire industrial area. Built in 1887-1894. Length — 58 km., with a minimum depth of 8.5 m. , and maximum of 18 m. The gateways are Functioning.

The introduction of the channel in operation helped transform Manchester into a seaport and its industrial growth. The main transported through the canal cargo, machinery, chemicals, textiles (down the channel); oil, cotton, grain, rubber, timber, food (up).



An aerial photograph of the Devonport naval base and the surrounding city of Plymouth, Devon, England. The image shows the harbor, the city built on the hills, and the extensive naval base facilities along the waterfront. The text is overlaid on the left side of the image.

THE LARGEST NAVAL BASE OF THE BRITISH

The Devonport is naval base of the Royal Navy, near Plymouth, on the border of Devon and Cornwall. The largest of the three British naval bases, and only able to repair and equip the ship with a nuclear power plant.

- The base is located on the East Bank of the Tamar river, close to Plymouth. The total length of berthing line of more than 6000 m. depth at the berths up to 12 m., has 14 dry docks and five dock basins with a total area of 2.5 km².
- Until 1979, the Devonport based British strike aircraft-carriers. Devonport is the only British base, is able to provide all types of support ships with nuclear power unit. The only such ships in the Royal Navy are nuclear submarines.



The background image is a nighttime photograph of Portsmouth Harbour. The Spinnaker Tower, a tall, white, sail-shaped structure, is the central focus, illuminated with bright pink and white lights. Its reflection is visible in the calm water of the harbour. In the background, other buildings and ships are visible, their lights also reflecting on the water. The sky is a deep blue.

PORTSMOUTH

Portsmouth — a naval base of the Royal Navy, located in the Eastern part of the Strait of Te-Solent, in the city and port of Portsmouth in Hampshire. Along with a shipbuilding capacity of the company BAE Systems, Bay Portsmouth harbour(гавань залива) and the adjacent anchorage(прилегающие стоянки) of Spithead is the main base of the fleet.

Our database is located the headquarters of the commander-in-chief of the fleet (Second sea Lord) and commander of the Portsmouth naval district, communication hub, several training centers, depots, naval Arsenal, shipbuilding, some civil subcontractors.





CRUISE PORT OF DOVER

The port of Dover is located 120 km from Central London. Dover is one of the few ports in the world where it makes sense to take the excursion from the cruise company. Prices in the region of 90€. Independent trip will cost is not much cheaper. The climate is temperate Maritime, similar to the climate of the neighbouring districts of England.

