

на

слов

на

-ШИ-

Деление

СЛОГИ

Лу-

Ма-

-на

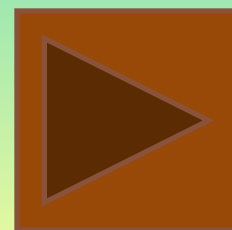
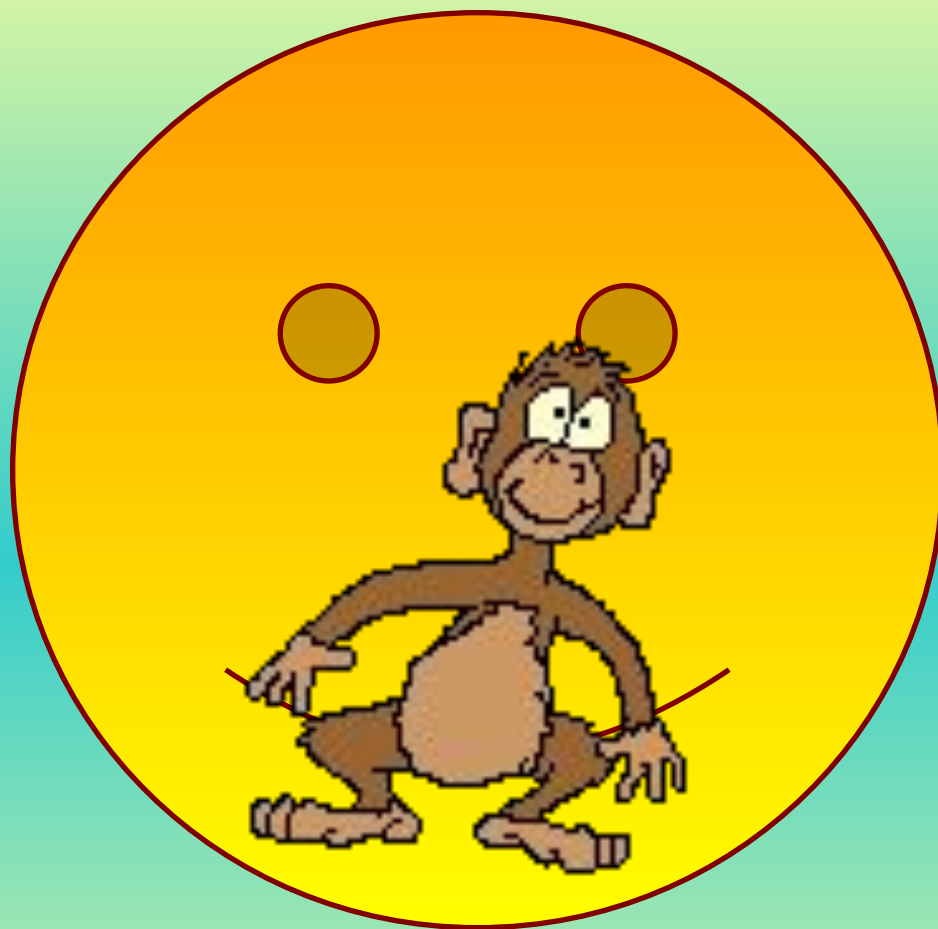
Тренажёр для обучения детей делению слов на слоги
Учитель-логопед МОУ СОШ №2
Кагарлыцкая Татьяна Леонидовна

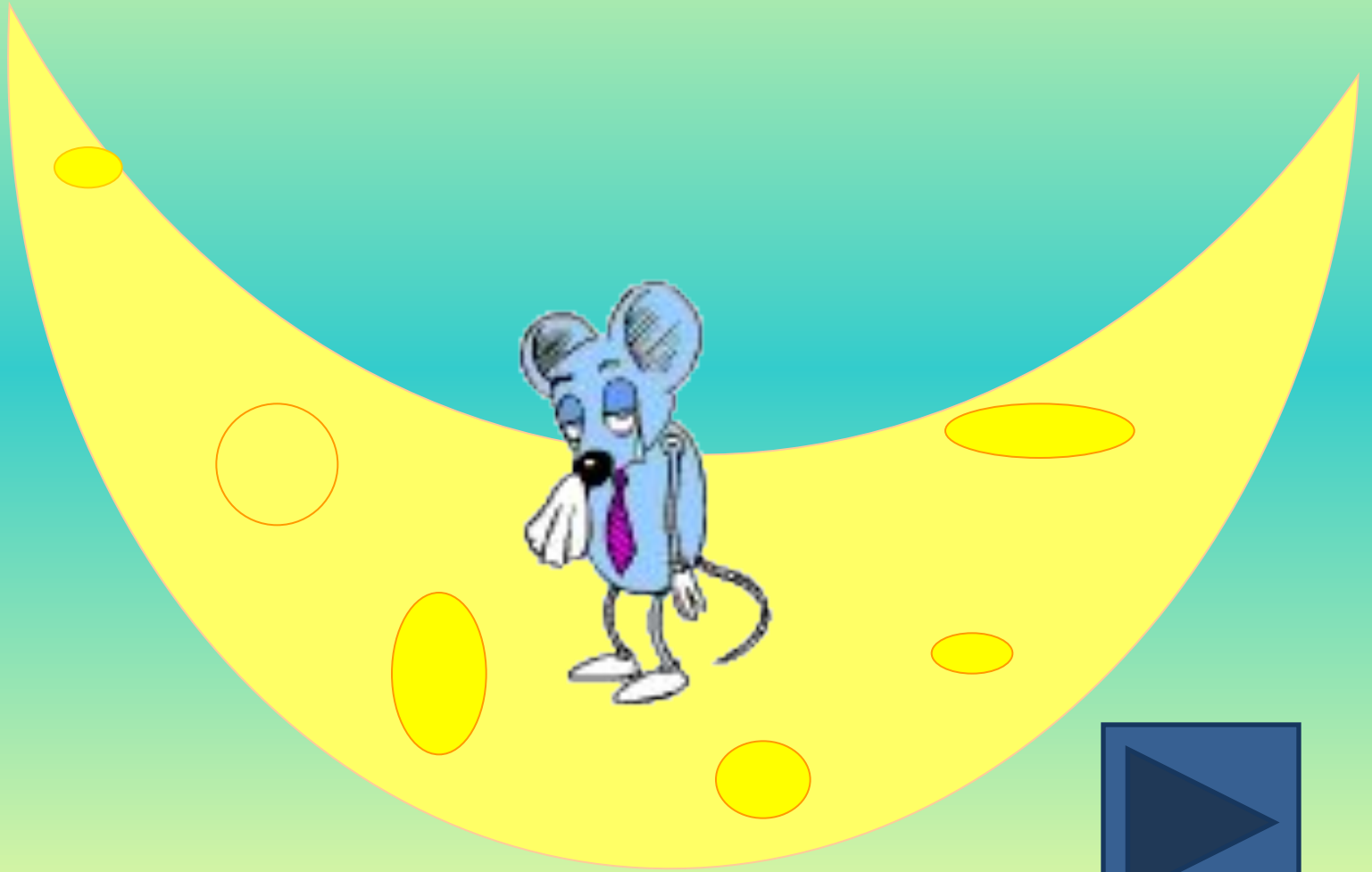
Встретишь слово на дороге Разбивай его на слоги.

Определи:

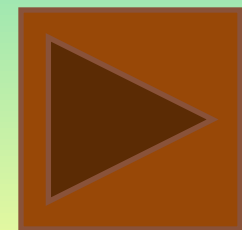
- Сколько слогов в названии картинки.
- Один кружочек – один слог.
- Нажми соответствующего количеству слогов мышонка.

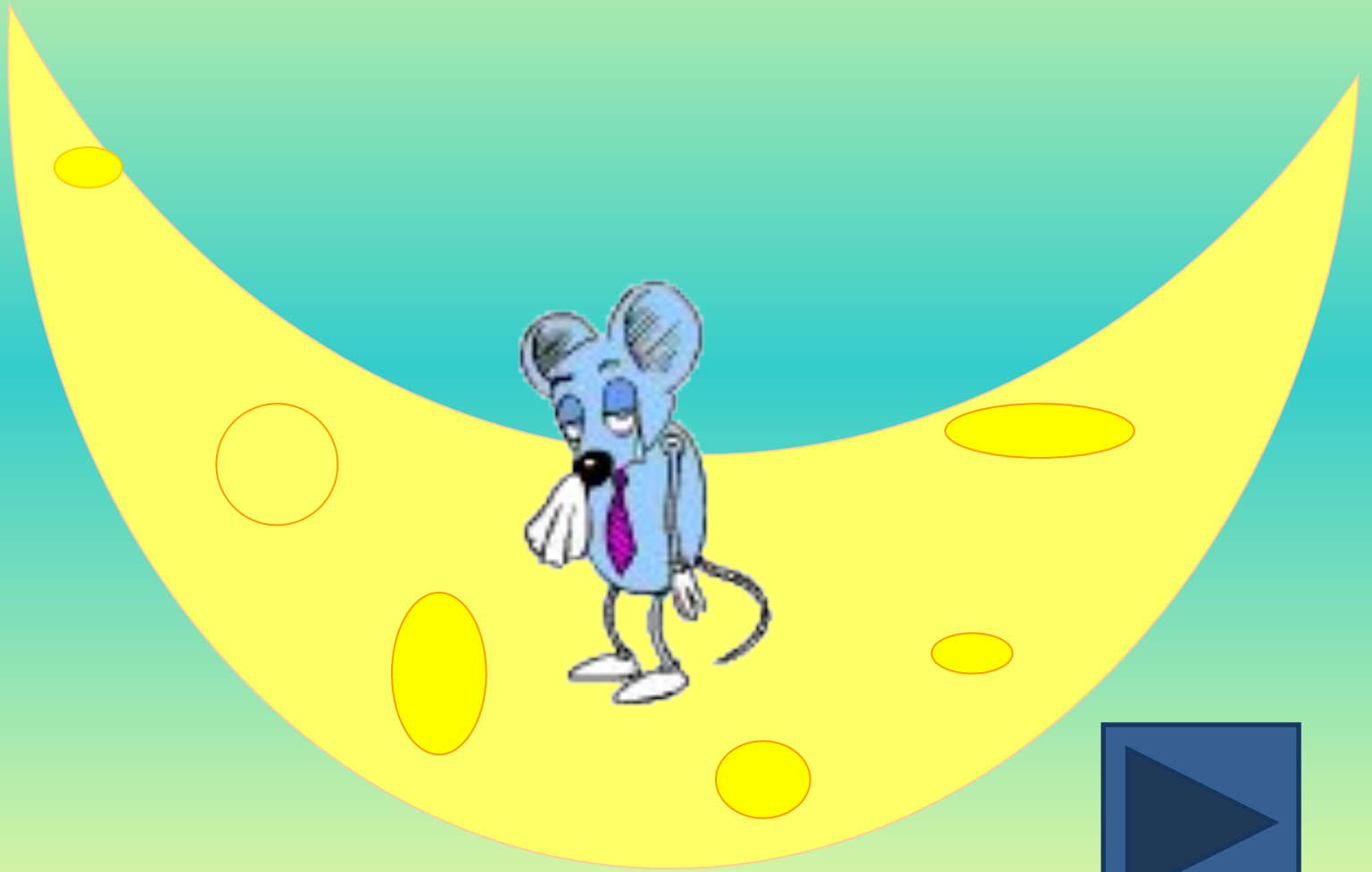


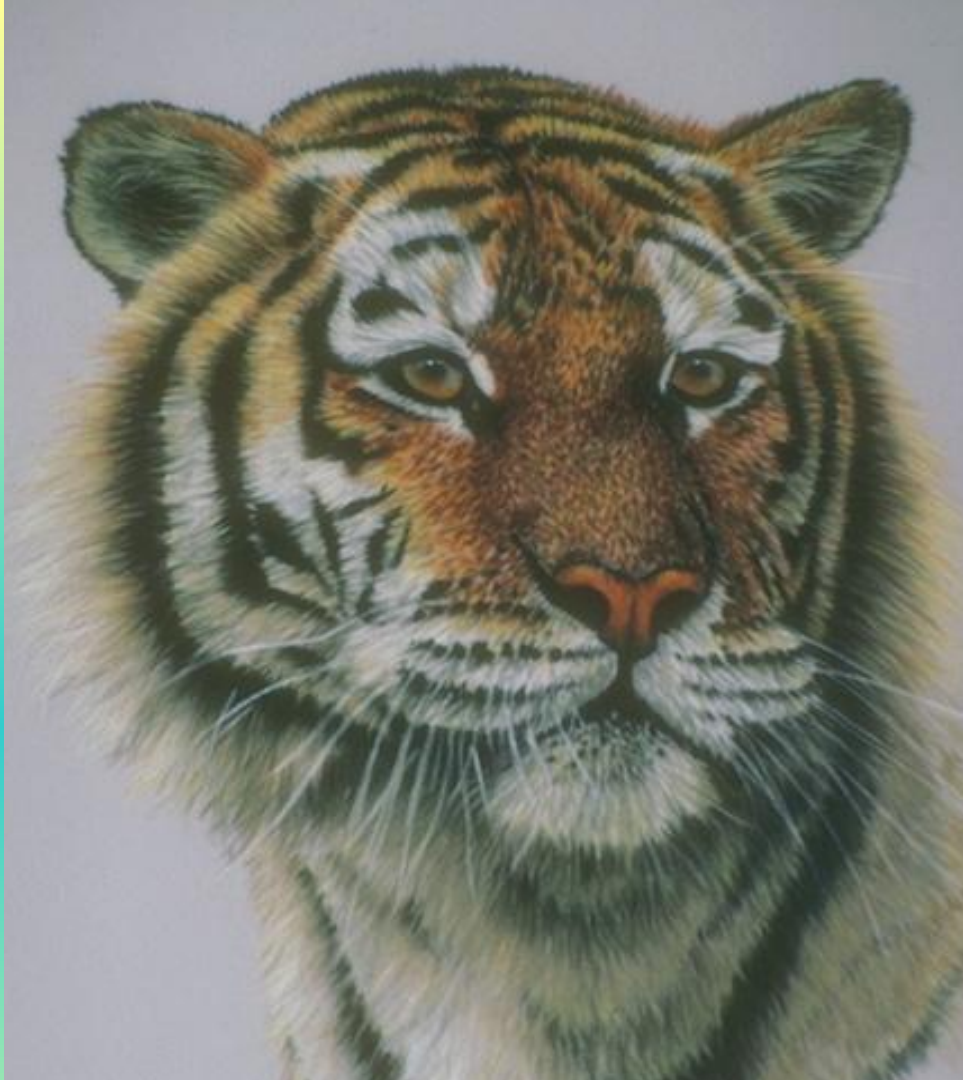


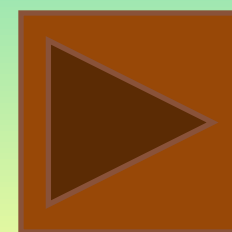


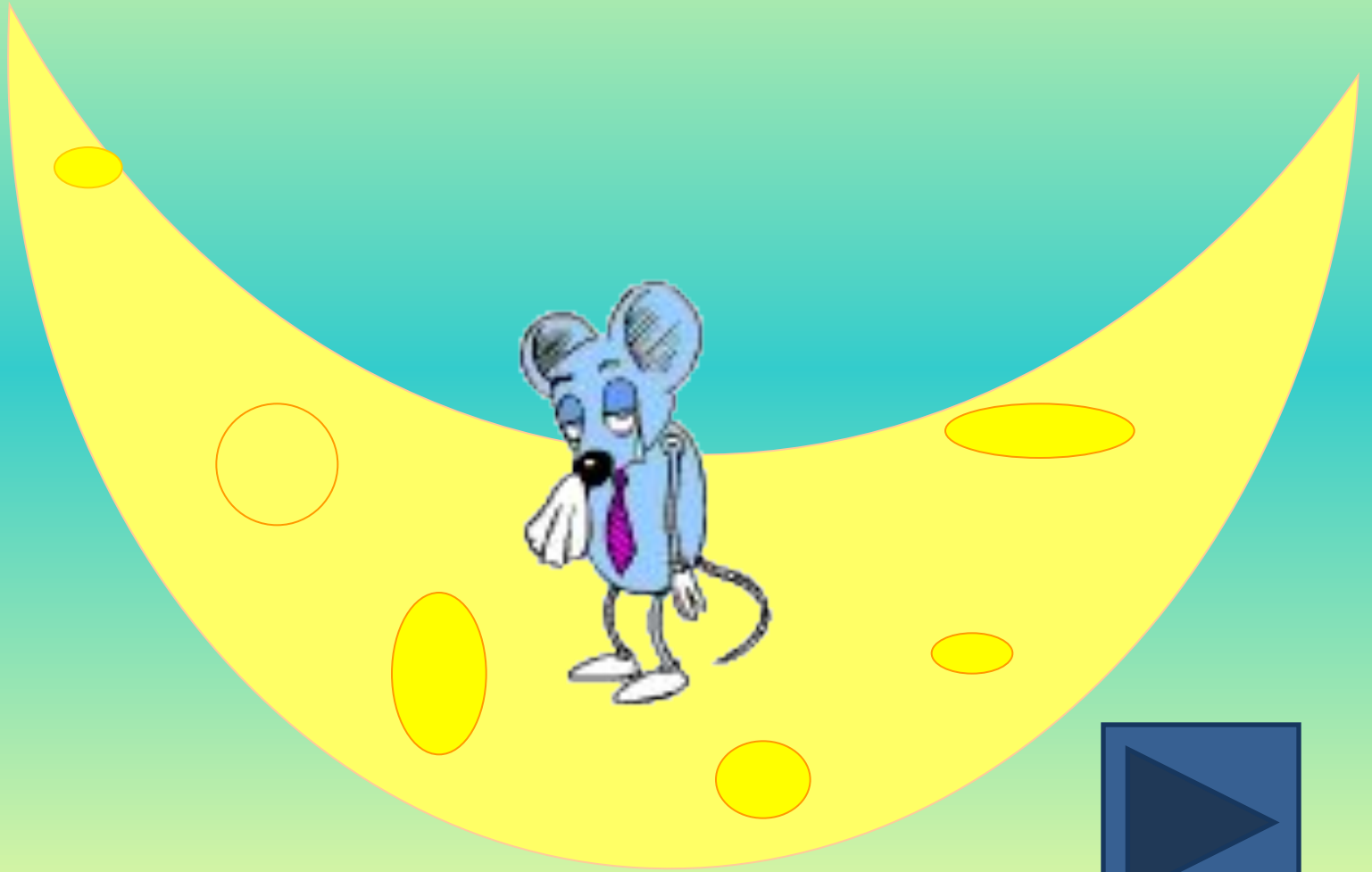




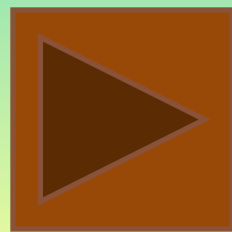


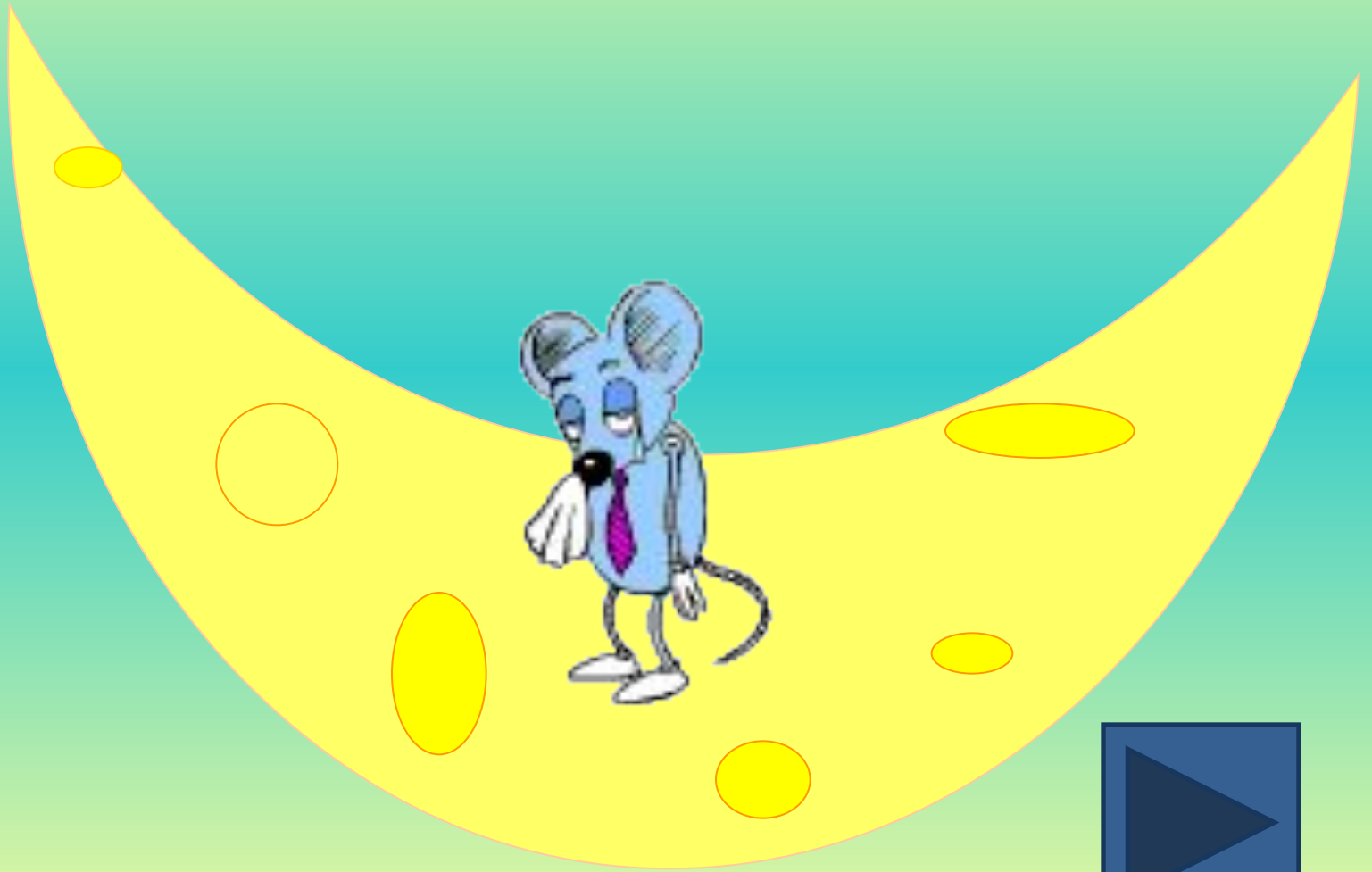




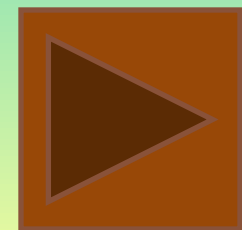
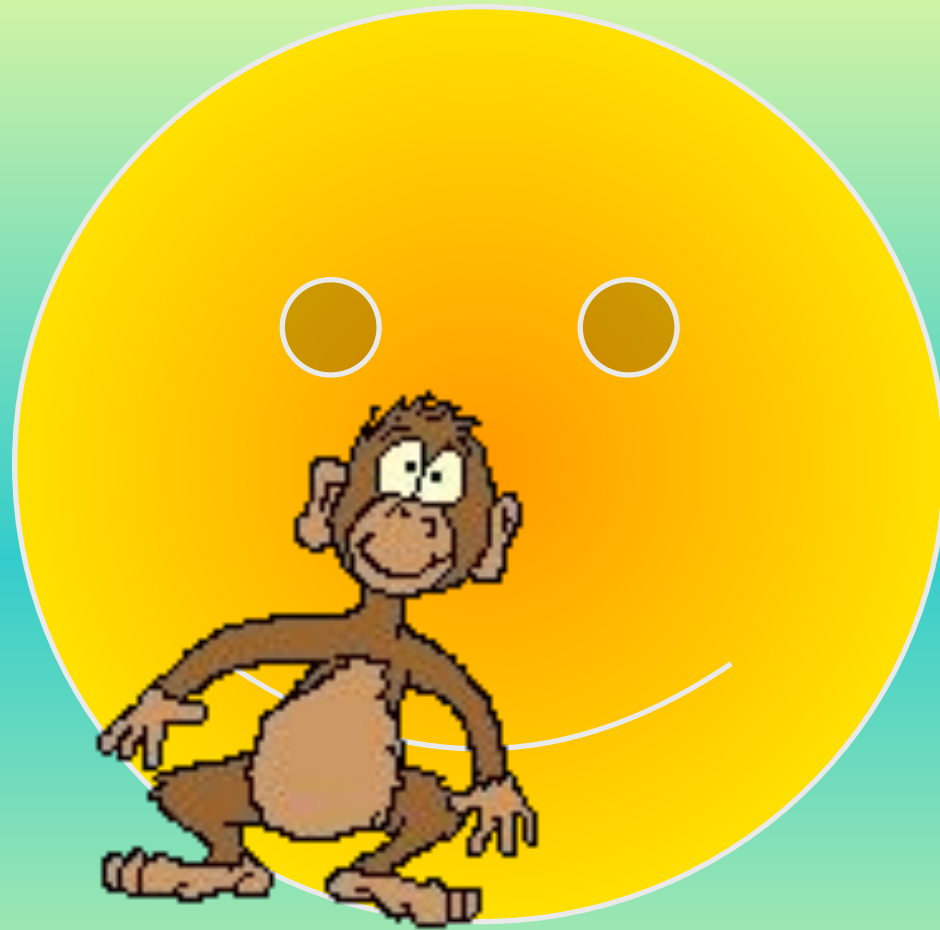


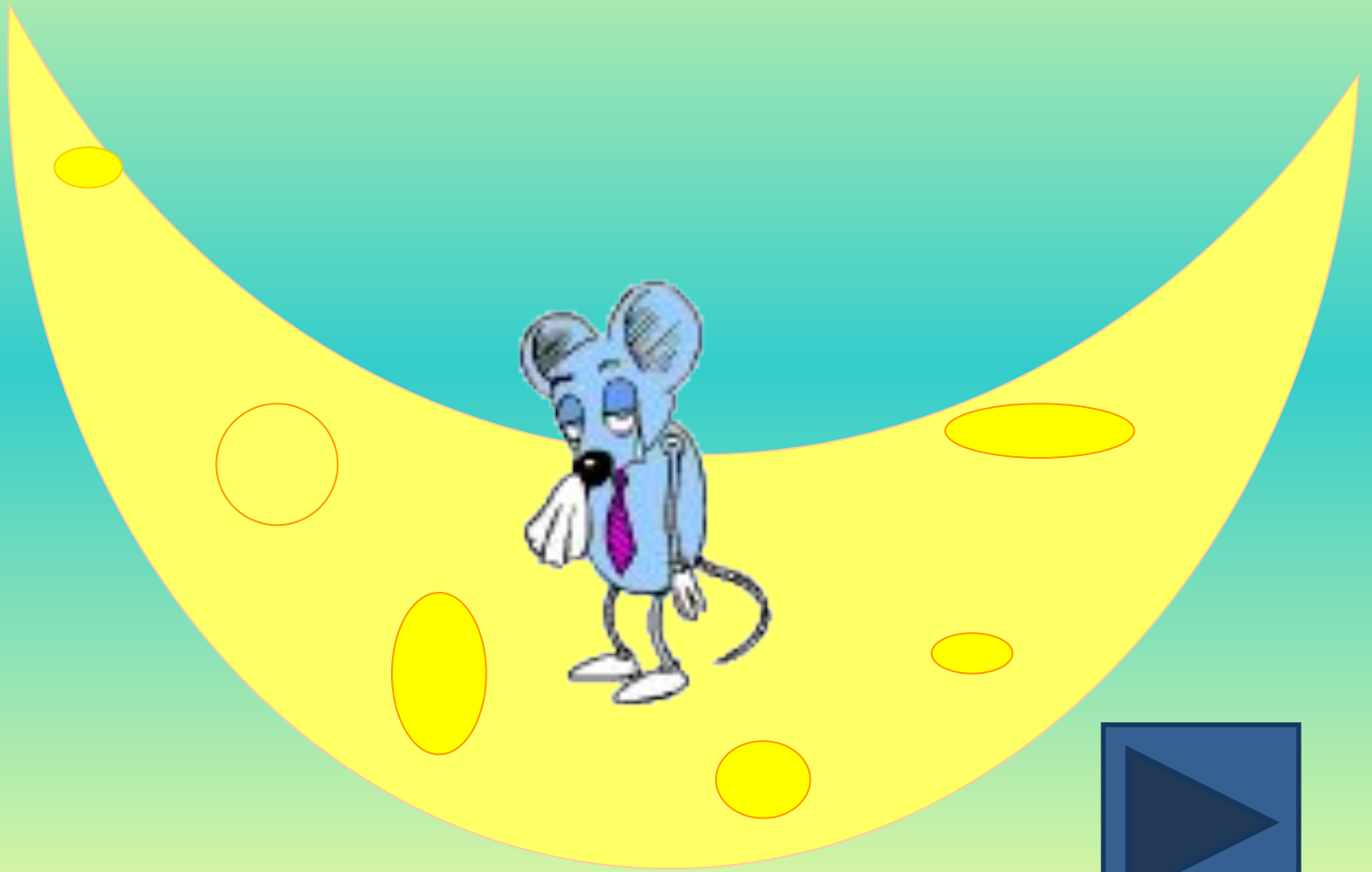




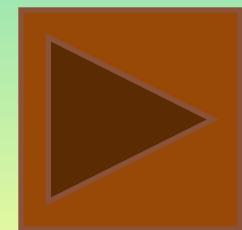


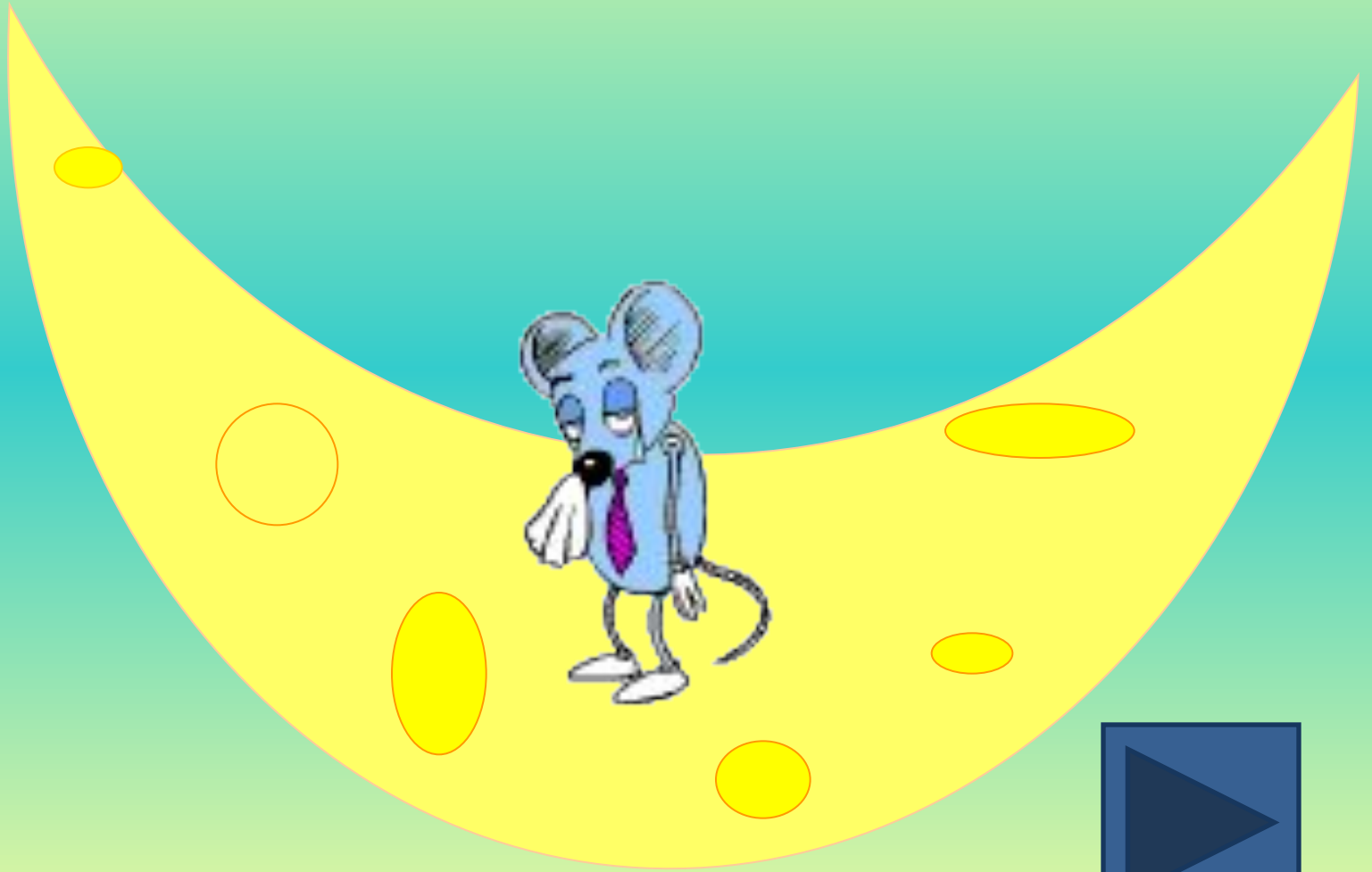




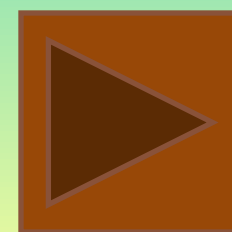
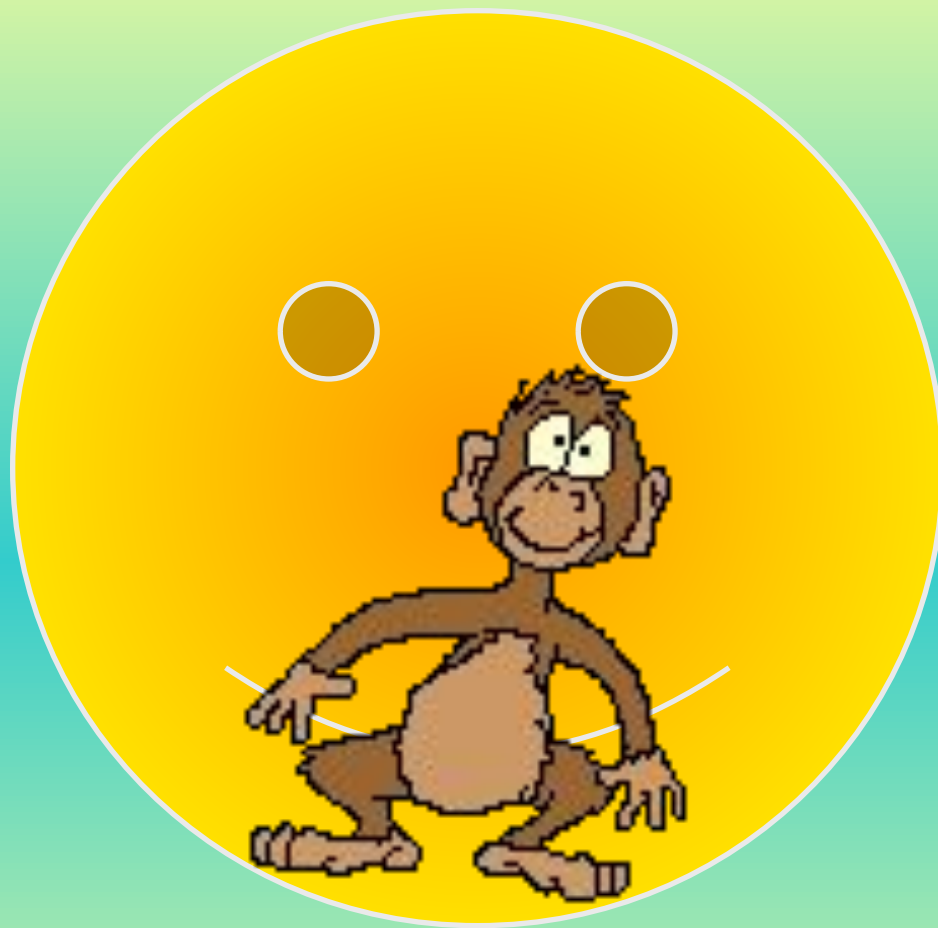


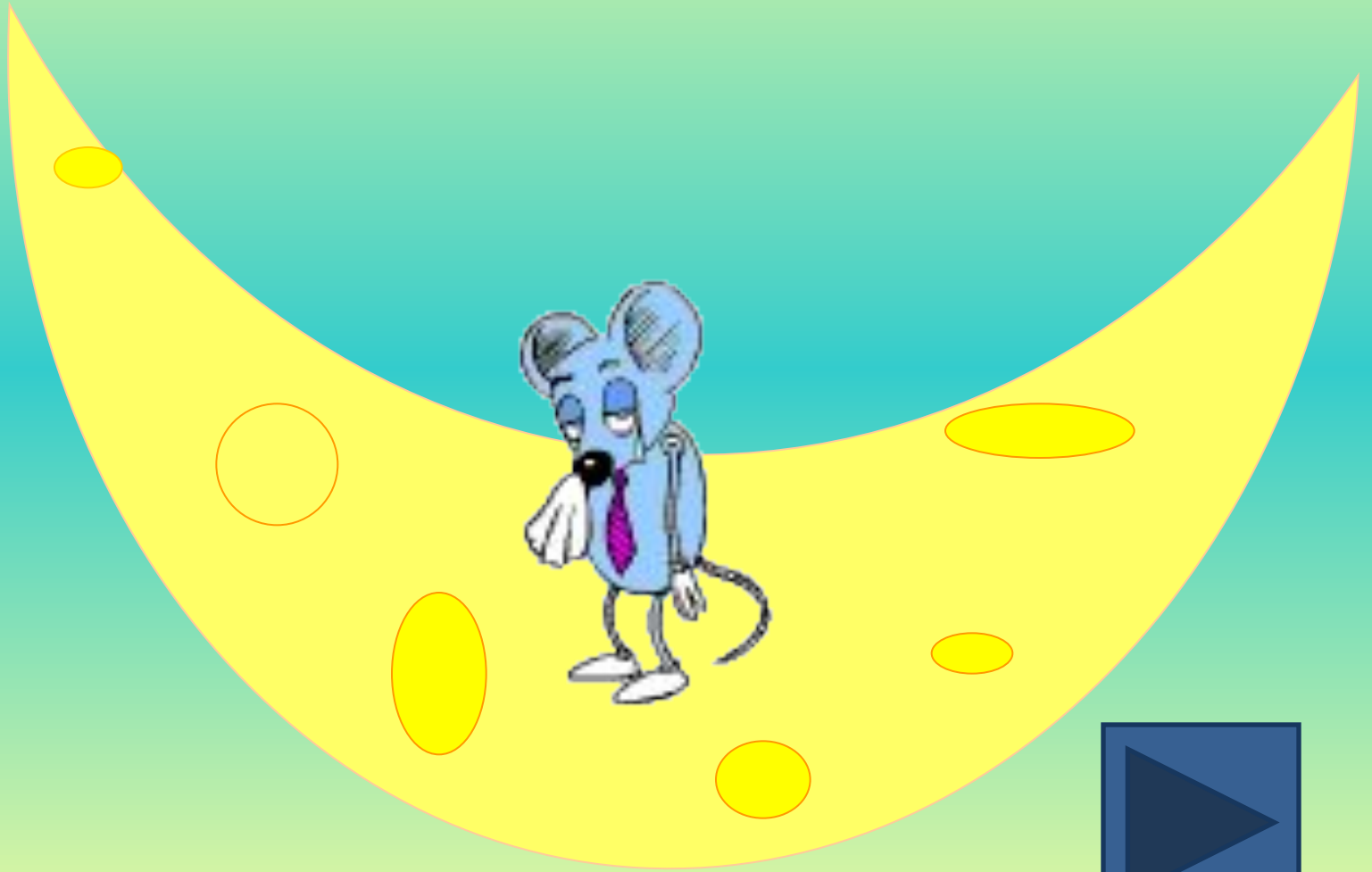




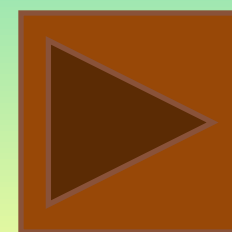


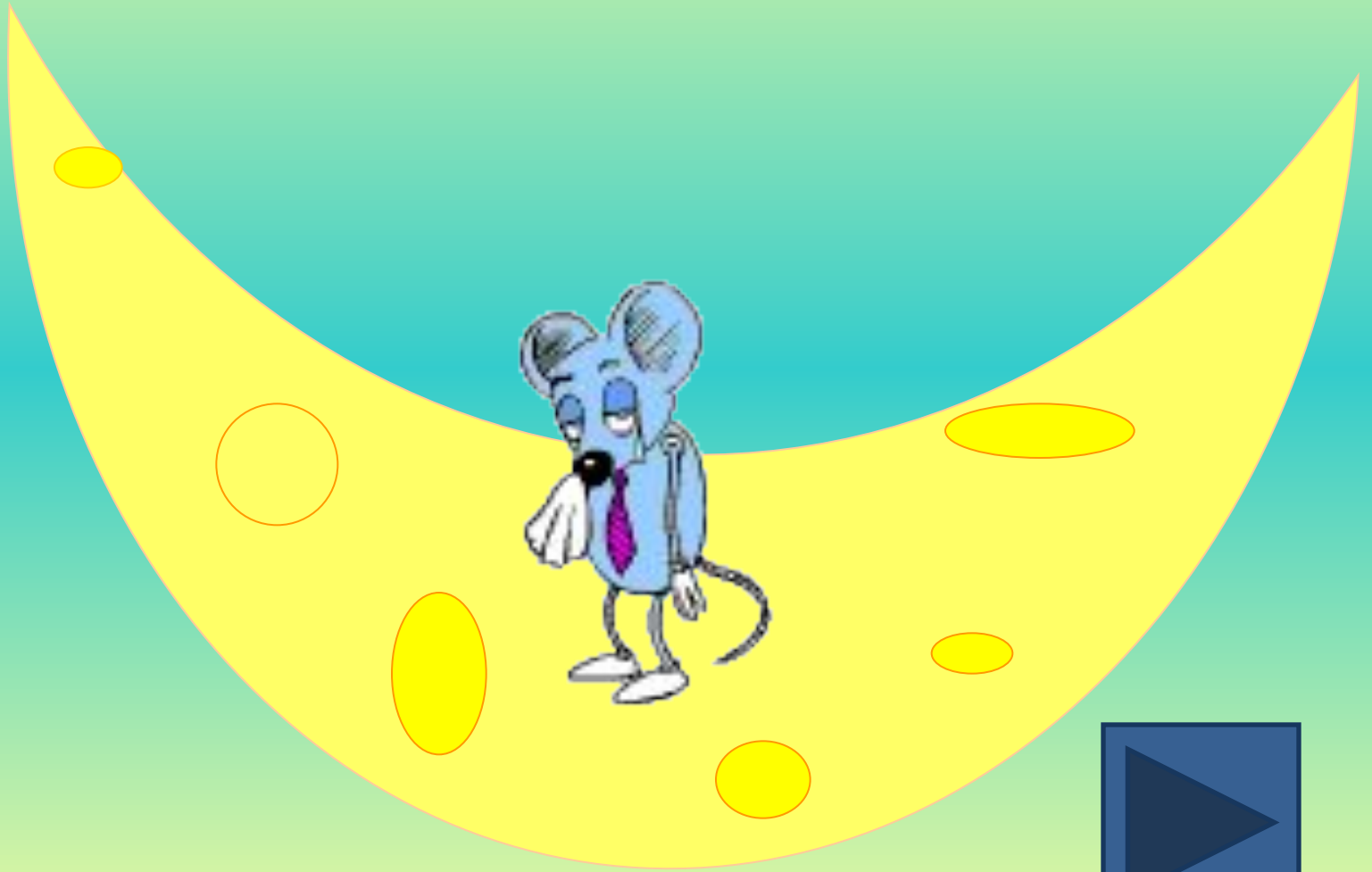




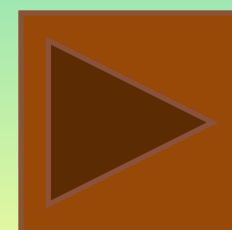


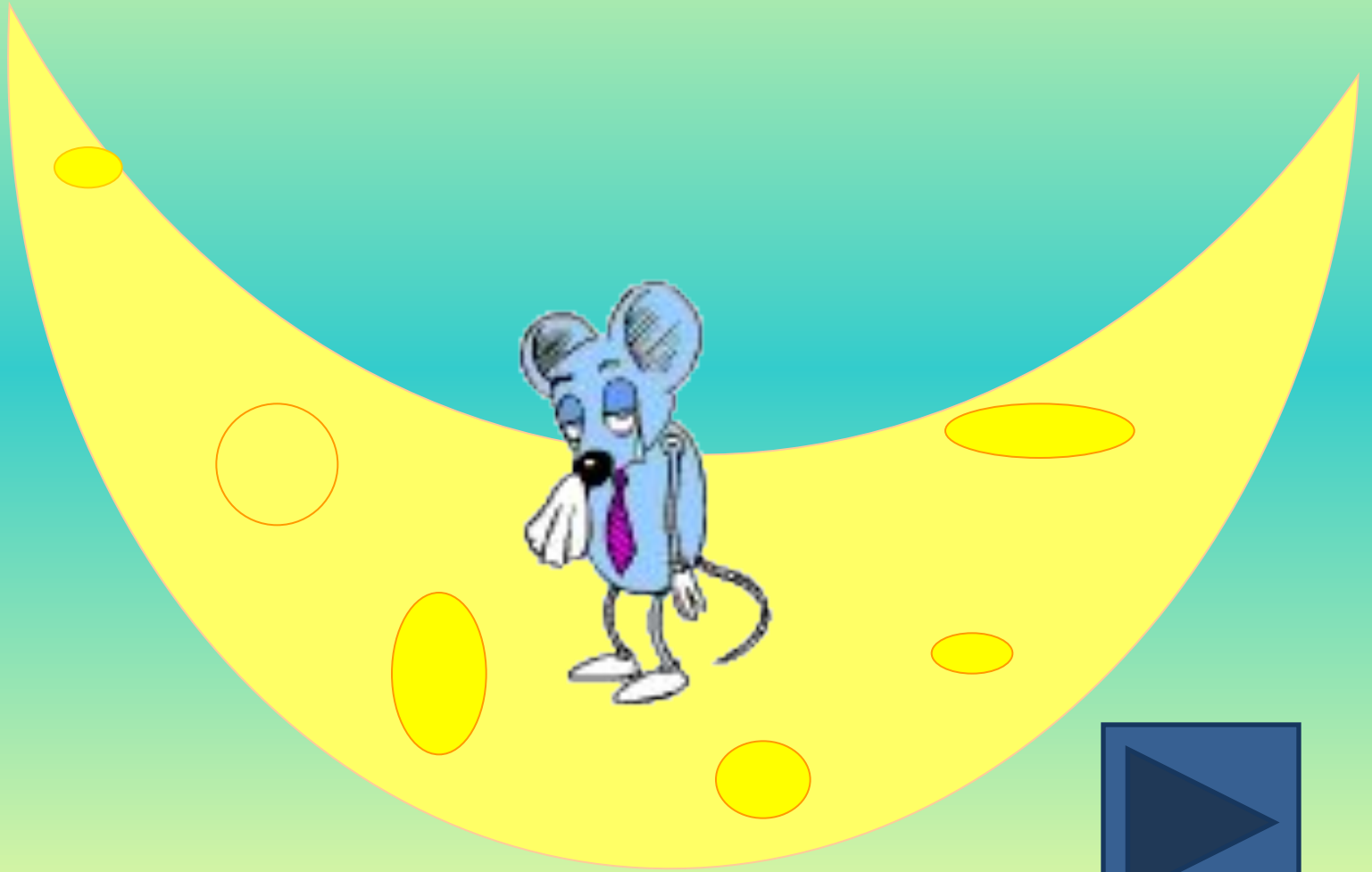




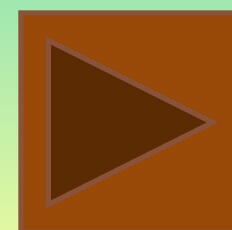


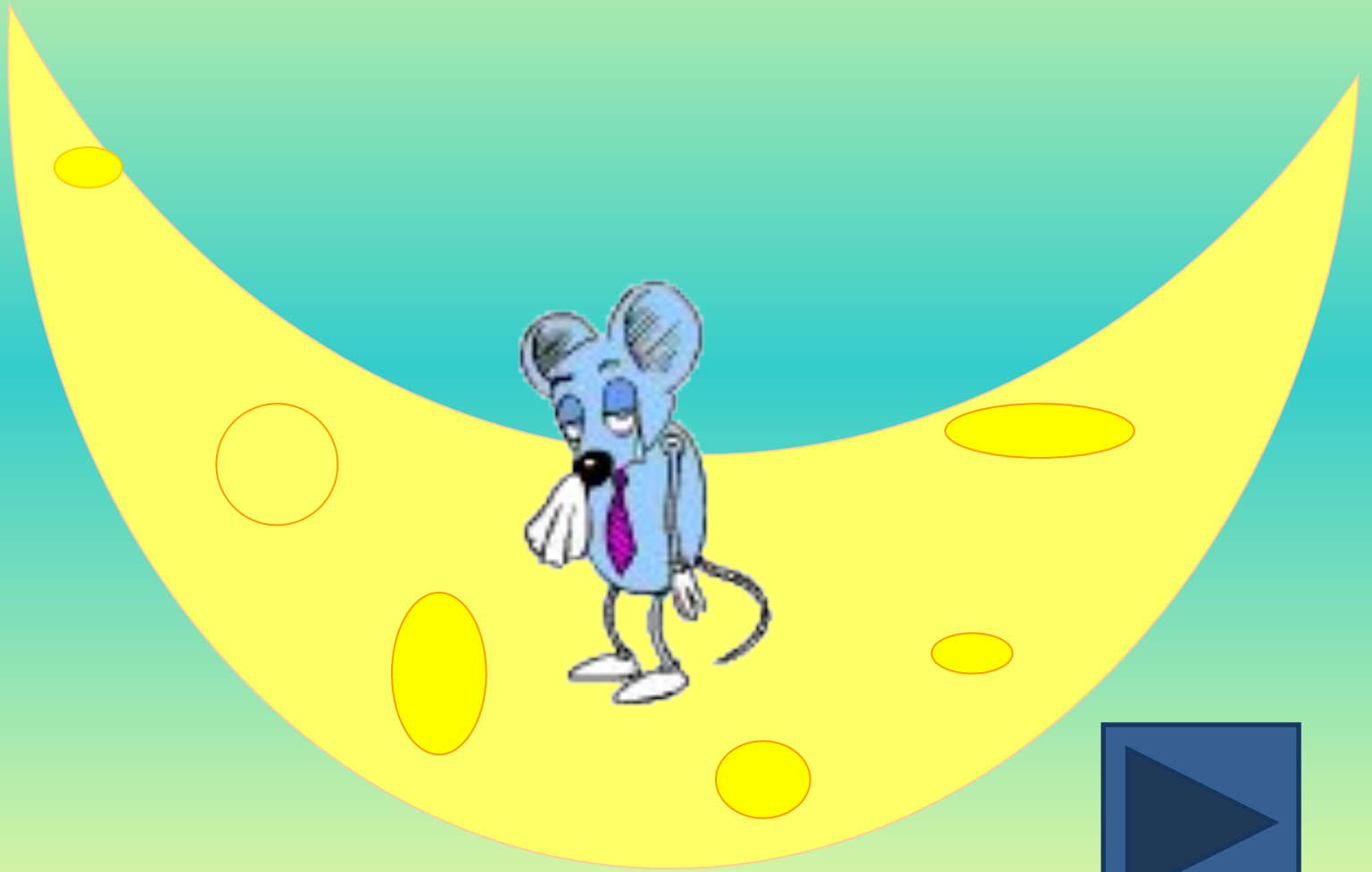




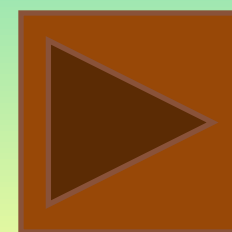


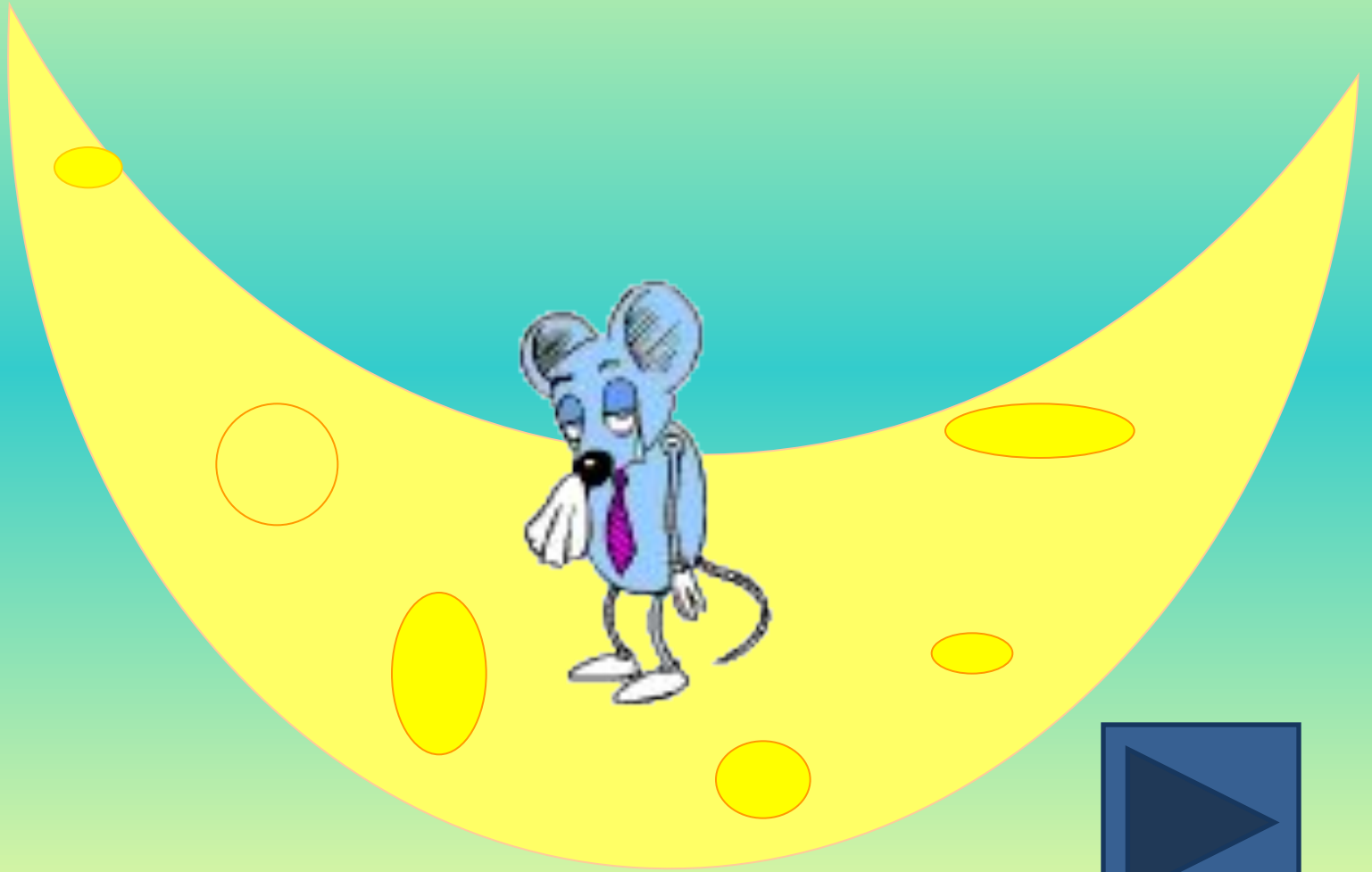




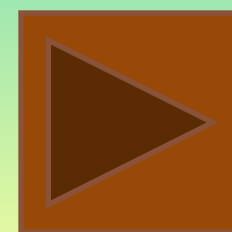


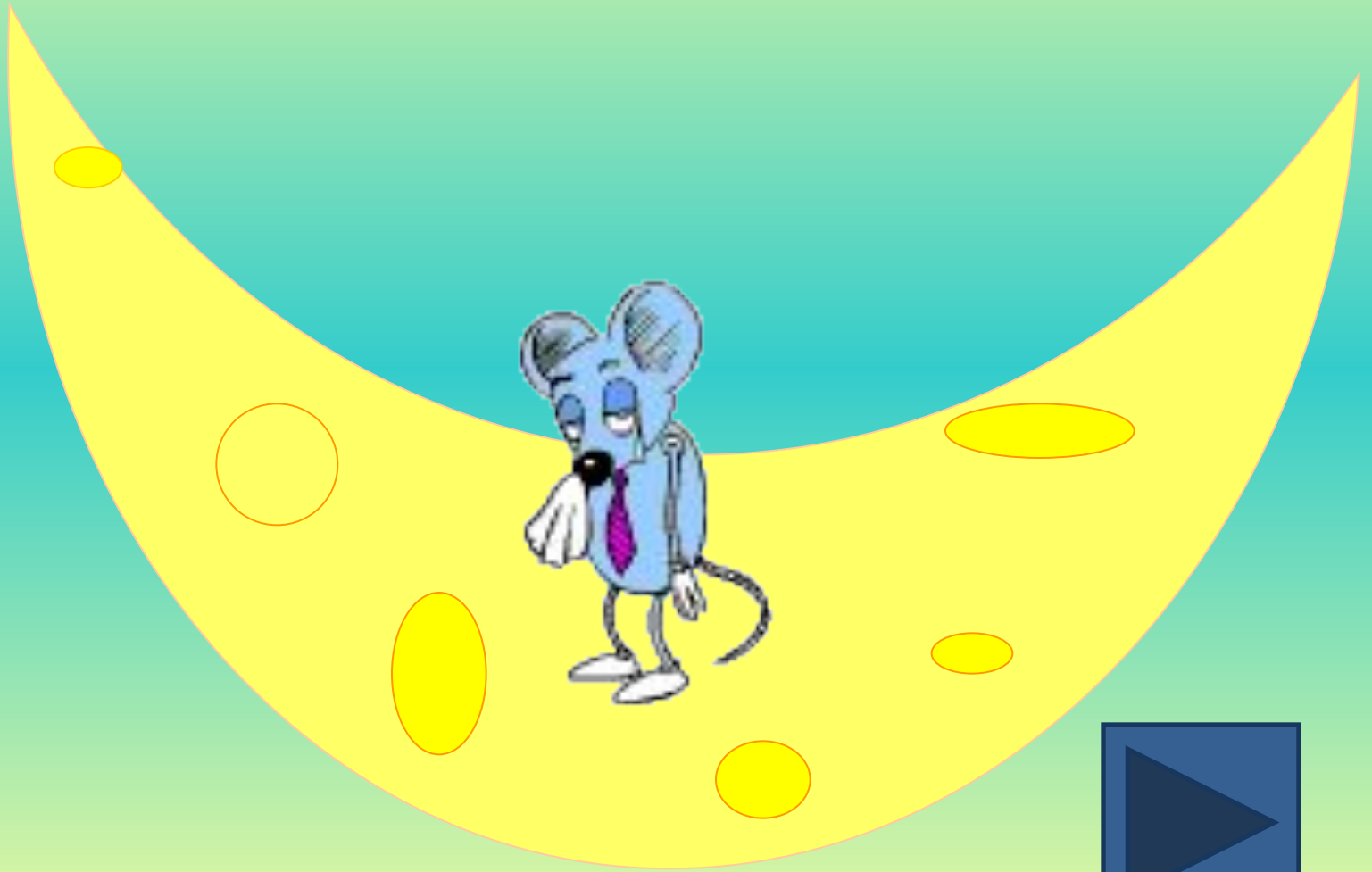




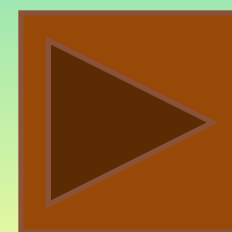


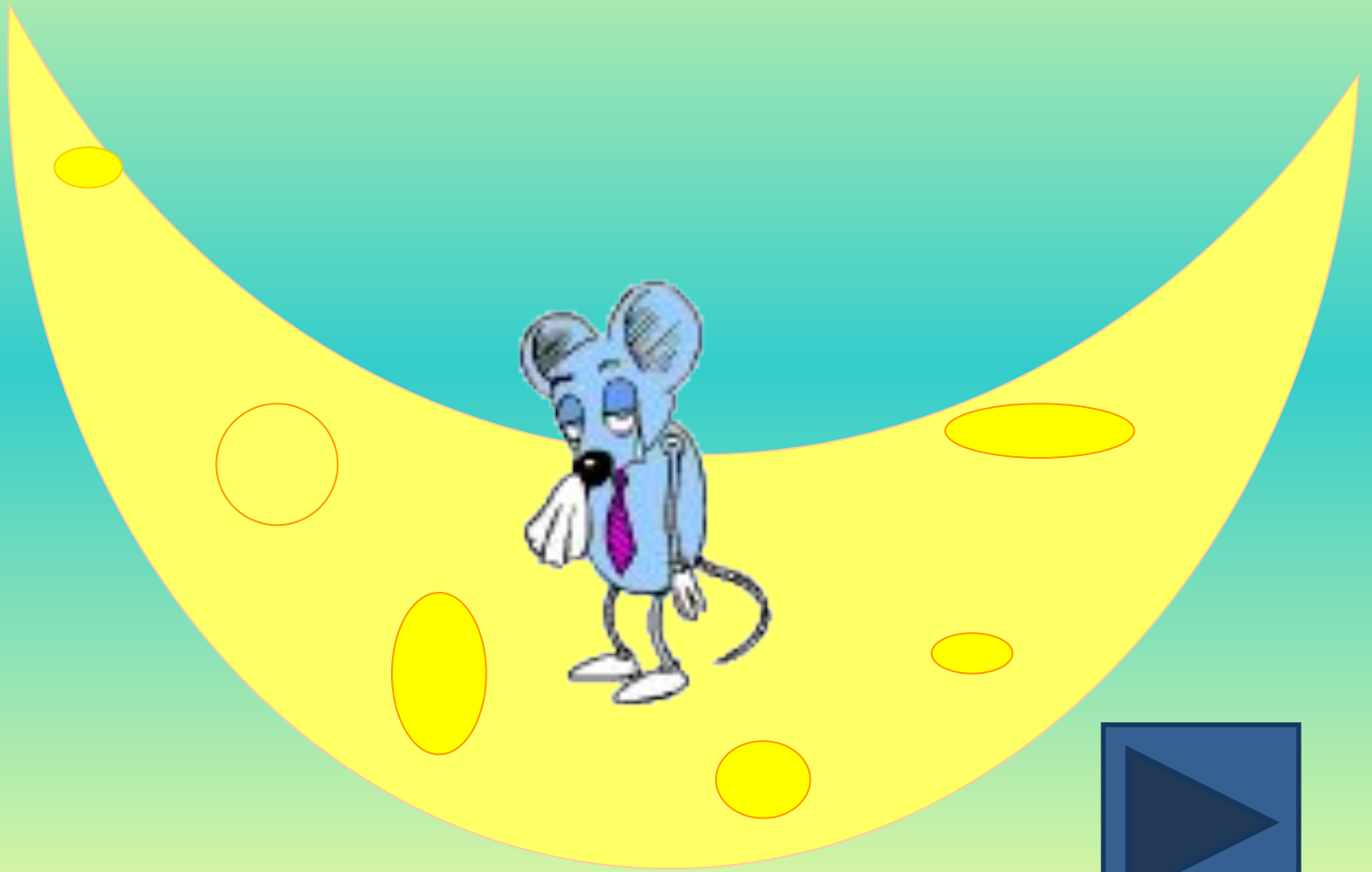




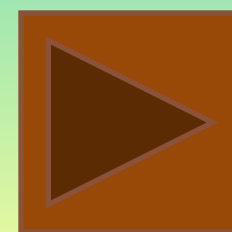


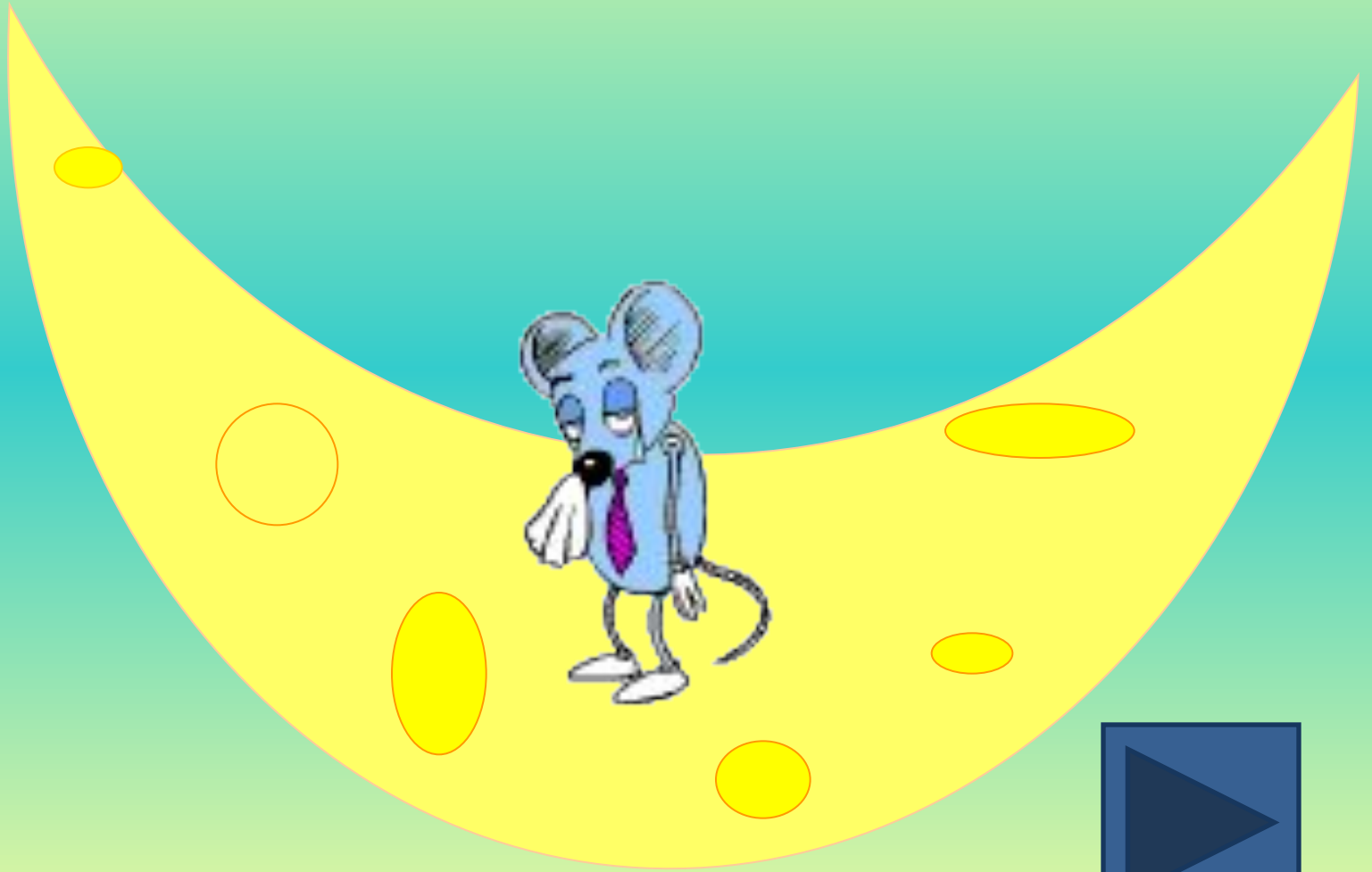




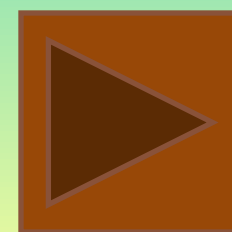


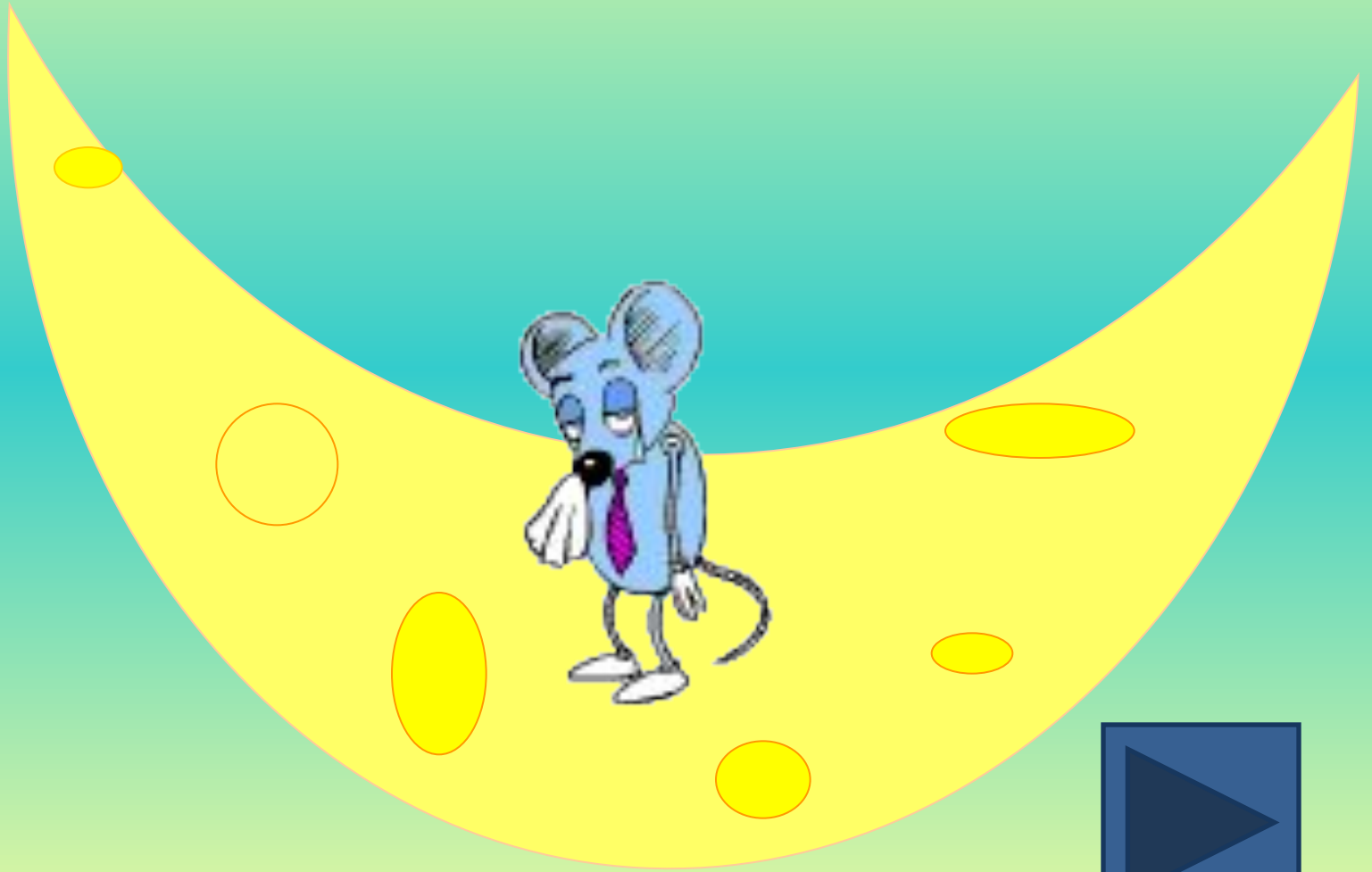




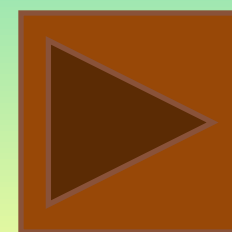


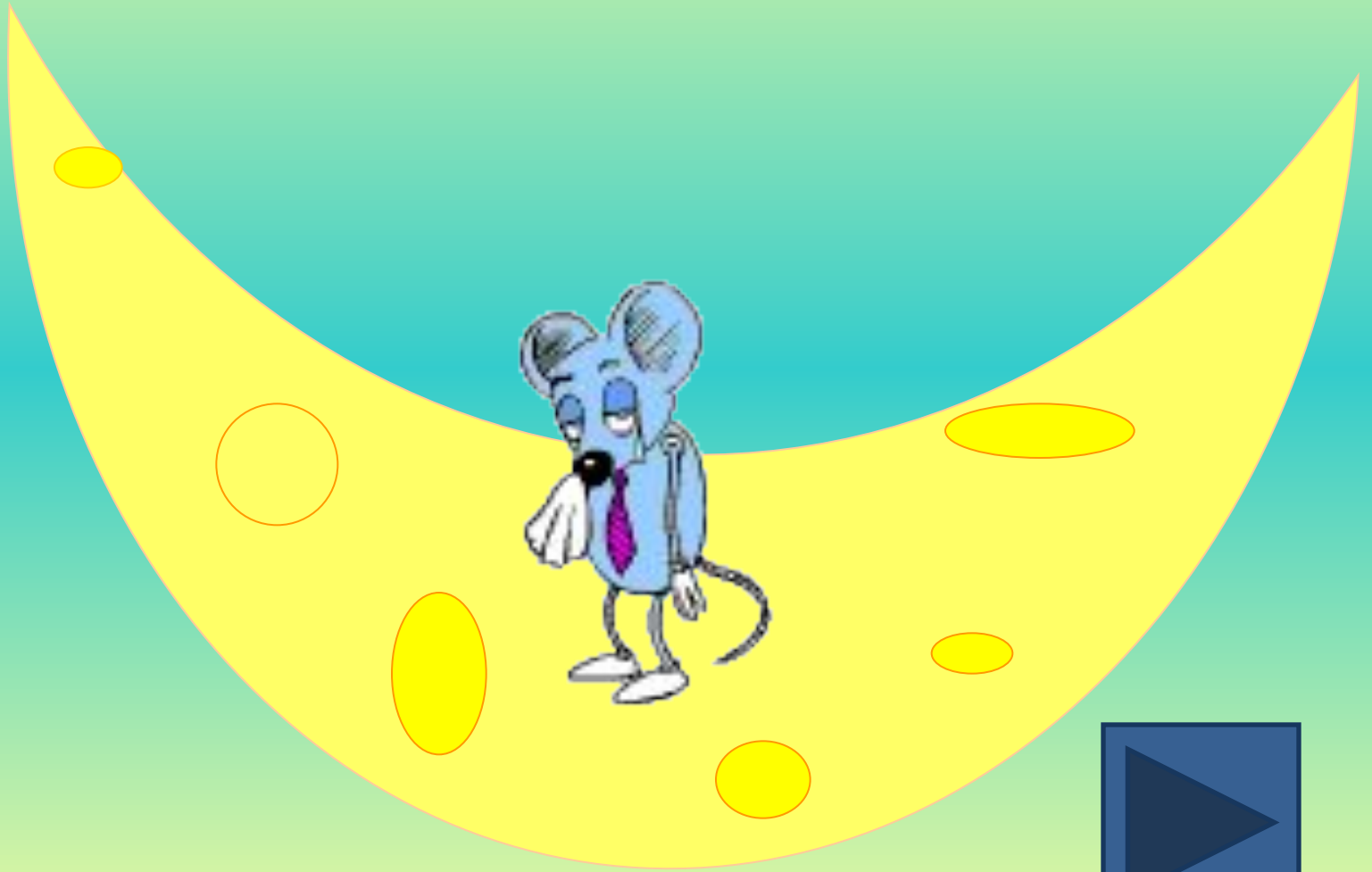














КОНЕЦ

