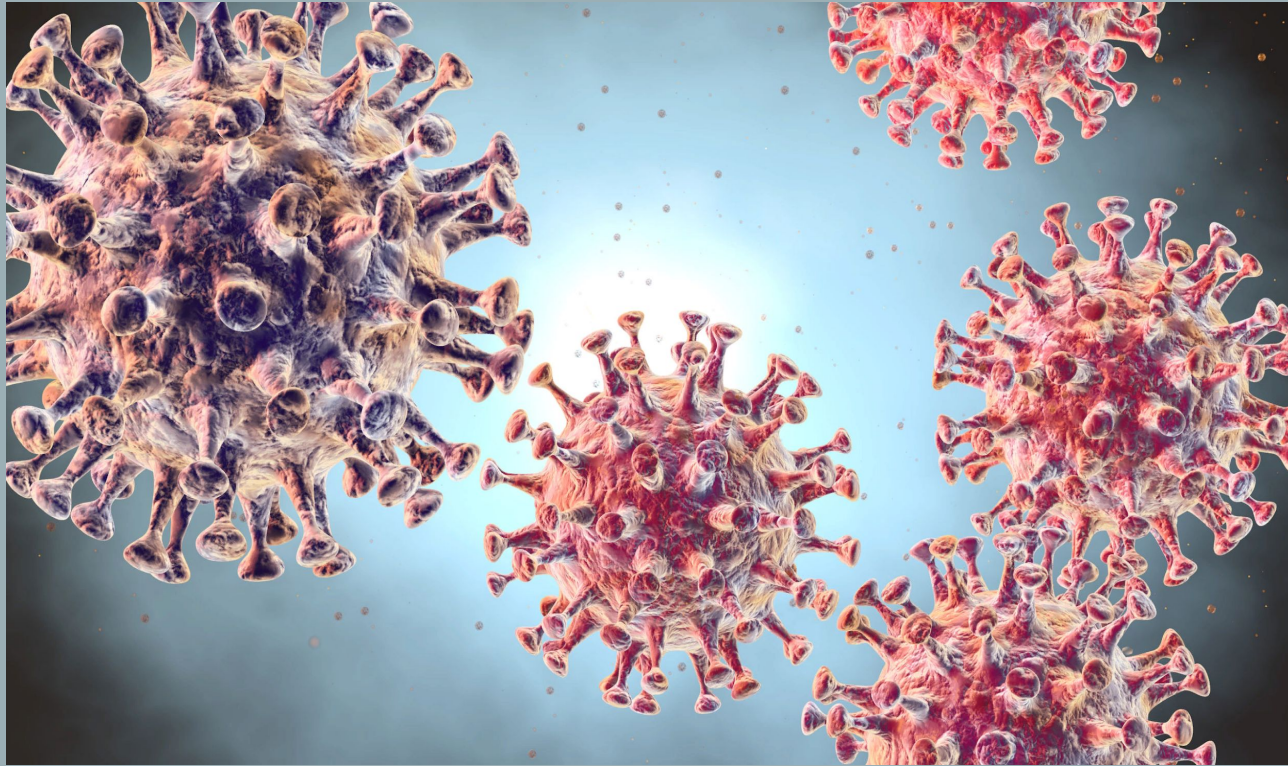


# COVID - 19 AND ITS IMPACT ON THE HUMAN PSYCHE



*КП-21-01  
Legotkina  
A.A.  
Scientific  
adviser  
Maslova  
S.M.*

*Perm, 2021*

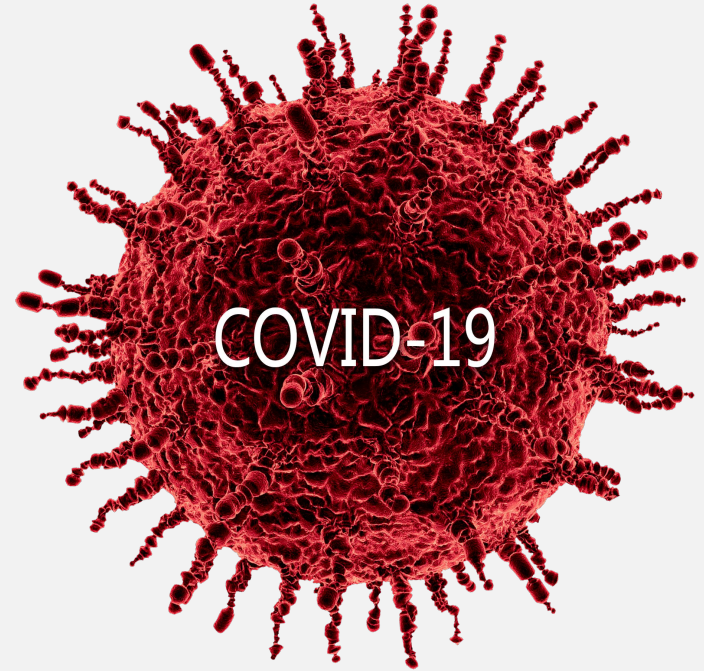
# CONTENTS

- What is Covid-19?
- How is coronavirus transmitted?
- Symptoms and signs of coronavirus in humans
- The influence of covid-19 on the psyche



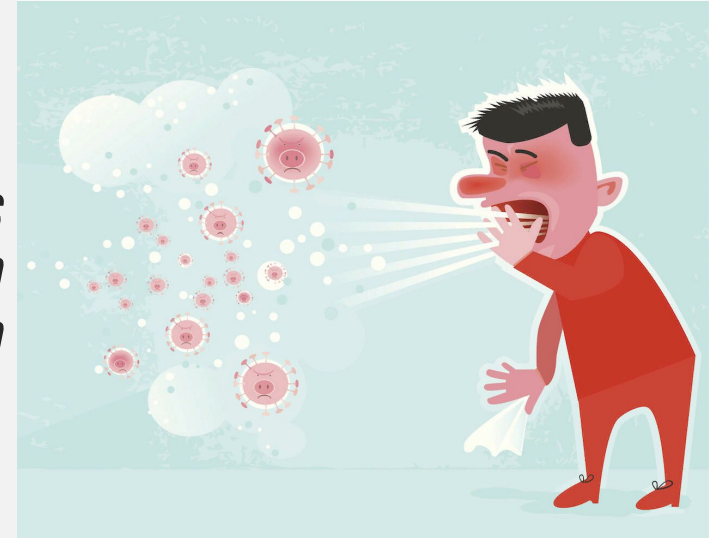
# WHAT IS COVID-19?

- **Coronaviruses are a large family of RNA-containing viruses capable of infecting humans and some animals. The specific name that these viruses received is related to their structure – the spiked appendages of the virus resemble the solar corona. To date, about 40 species of coronaviruses are known, united**



# HOW IS CORONAVIRUS TRANSMITTED?

- The disease is transmitted by airborne droplets (coughing and sneezing); by contact (through touching).The virus can be transmitted through subway handrails, door handles and other surfaces.*



# SYMPTOMS AND SIGNS OF CORONAVIRUS IN HUMANS

**Important: Similar symptoms occur in patients with acute respiratory viral infections or influenza. If they are detected, it is necessary to immediately consult a doctor to get medical help and exclude the coronavirus.**



## **Symptoms and signs:**

- **High temperature;**
- **Shortness of breath;**
- **Sneezing, coughing and nasal congestion;**
- **Muscle and chest pain;**
- **Headache and weakness;**
- **Nausea, vomiting and diarrhea are possible.**



## THE INFLUENCE OF COVID-19 ON THE PSYCHE

- To date, according to researchers, more than a third of those who have had the coronavirus face, to one degree or another, negative consequences for the psyche.
- We can say that the impact of the virus on the human psyche begins much earlier than it enters the body.



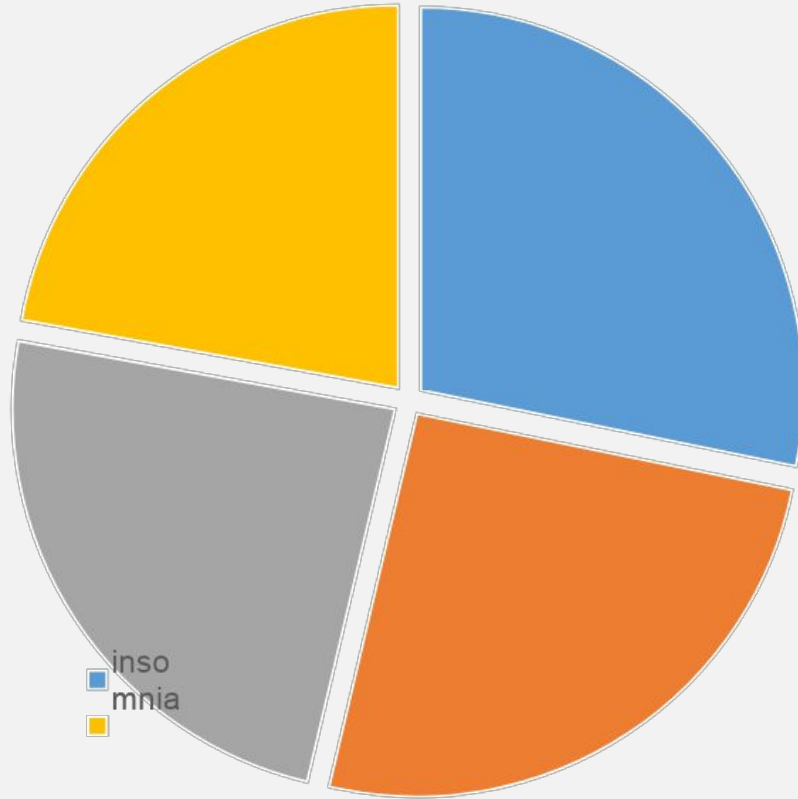
# THE INFLUENCE OF COVID-19 ON THE PSYCHE

- The problem of mental health after the disease is very acute and has not yet been fully studied. According to a study by Italian doctors published in the journal *Brain, Behavior and Immunity*, 55% of patients who underwent covid had some kind of mental problems.



# THE INFLUENCE OF COVID-19 ON THE PSYCHE

## Symptoms



**This diagram clearly shows what mental problems coronavirus patients most often face.**

**Unfortunately, we see that COVID-19 negatively affects the emotional state of patients, and hence the psyche.**





A black and white photograph of a city skyline at night. The Empire State Building is the most prominent feature, illuminated from top to bottom. Other skyscrapers are visible, some with lit windows. The foreground shows a body of water reflecting the city lights. A dark horizontal band across the middle of the image contains the text.

**THANK YOU FOR YOUR ATTENTION**