

AIRPORT SYSTEM



Prepared by: students of the
group OBP 2-1

Paramonova Yulia

Aksenova Polina

Volkova Anastasia

A photograph of an airport check-in area. In the foreground, there are several check-in counters with white and grey tops, separated by red stanchions and a red rope. Above the counters, there are multiple digital display boards showing flight numbers and times. The boards are yellow and blue, with numbers like 14, 15, 16, 17, and 18 visible. The background shows more counters and a large window looking out onto the tarmac. The floor is light-colored tile.

Passenger check-in and departure control system

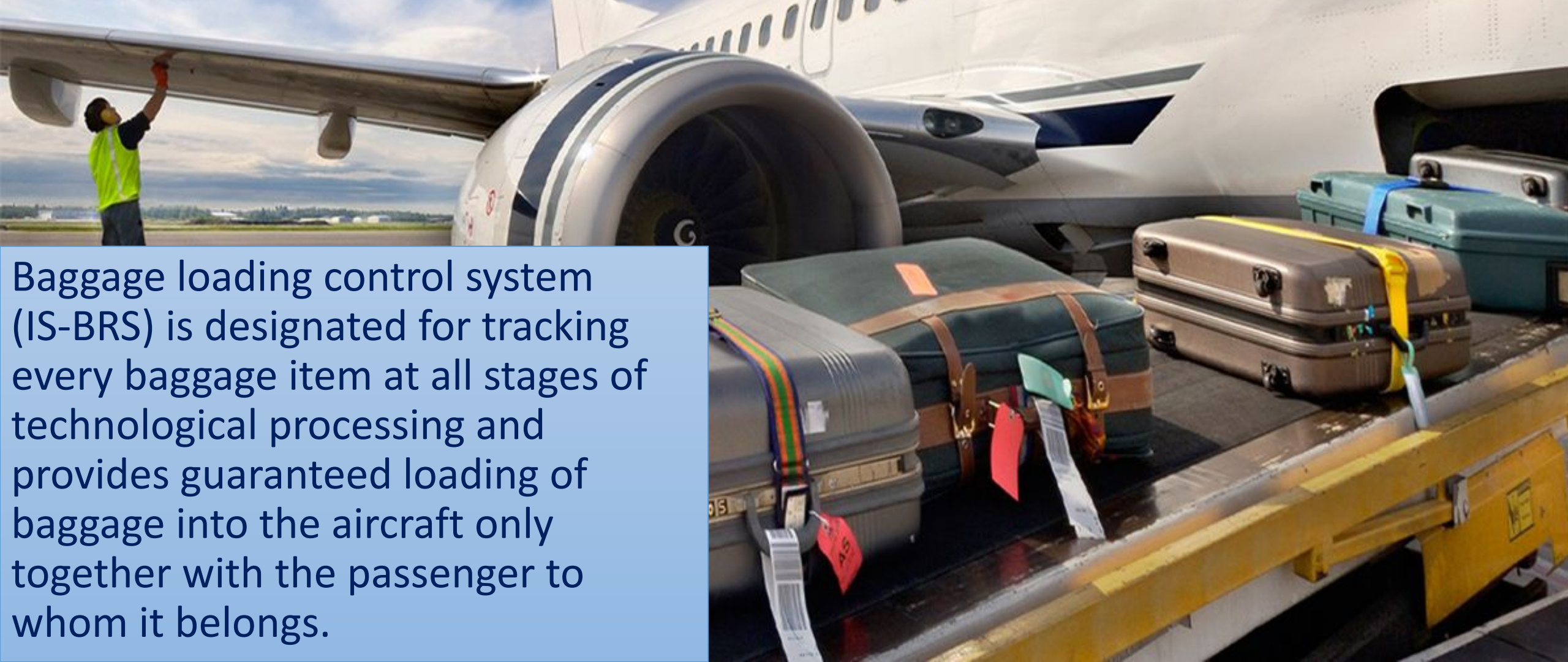
Passengers check-in is the most important stage of technological service. It is exactly the stage when commercial load of aircraft is being formed.

Passenger check-in and departure control deals with the following tasks:

- ✓ Passenger and reservation lists management
- ✓ Printing of boarding passes and baggage tags
- ✓ Finding seats for passengers in the cabin of aircraft
- ✓ Control of loading and weight and balance calculation
- ✓ Control of passengers' boarding an aircraft
- ✓ Preparation of commercial documentation for aircraft's departure
- ✓ Receiving and sending standard IATA messages



Baggage loading control system



Baggage loading control system (IS-BRS) is designated for tracking every baggage item at all stages of technological processing and provides guaranteed loading of baggage into the aircraft only together with the passenger to whom it belongs.



System of providing voice information

IS-AVIS performs the following main functions:

- Providing passengers with information between technological service stages
- Reminding passengers about start of check-in, pre-flight formalities and boarding
- Search of passengers within terminal
- Providing information in passengers' native languages



Handling Management System

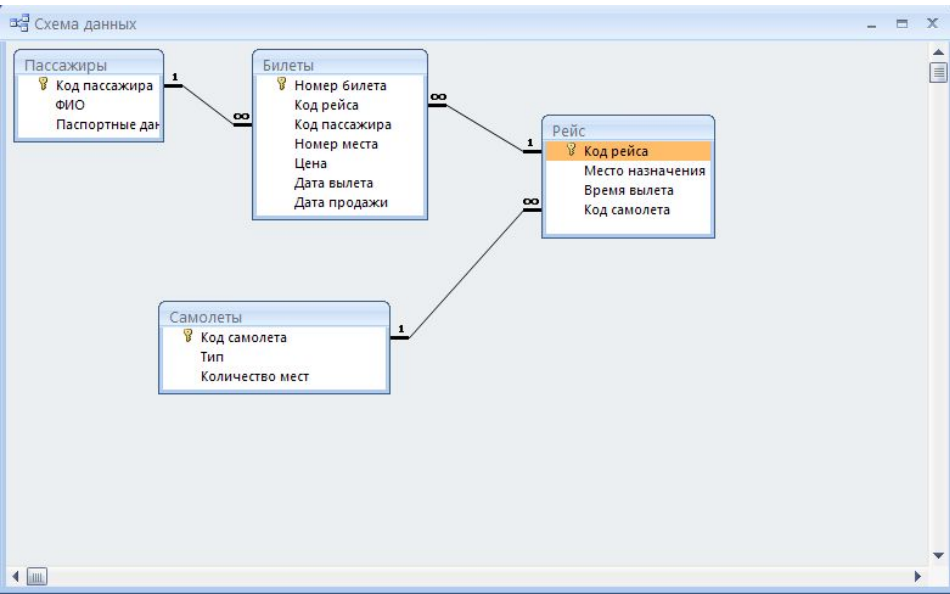
IS-GHMS system helps to perform the following tasks:

- To maintain and to manage aircraft servicing technological regulations.
- To allocate assignments to drivers-operators of special vehicles and to monitor their progress.
- To track transfer baggage traffic at the apron.
- To track routes of special vehicles across the apron.



Resource management system

- This system helps to efficiently manage shifts of technicians and engineers, maintenance and purchase of component parts for special vehicles and technical maintenance of special vehicles.



System of managing airport activities

- The system is designated for storing and managing main data and operations of an airport: schedule planning and managing, dispatching control of takeoffs/landings and apron service management.

Flight Information System - Administrator FMS

File Edit Documents Window Help

Actions

View
Real time
Time range
Visible time range: +5 hrs
Calendar
July 2011
MTWTFSS
27 28 29 30 1 2 3
4 5 6 7 8 9 10
11 12 13 14 15 16 17
18 19 20 21 22 23 24
25 26 27 28 29 30 31
1 2 3 4 5 6 7

Arrival operations

Show Extended Columns

Flight number	Arrival	Trace	Ra.	Position	Reg	Type	Delays	AZA	ETA	Pac.	Bookin	Cat	Mtd	Crs
LQ069	2011-07-27 08:55	VNAV			SPLLB	734	DL36LDB10	09:17	09:20	111:0	0	0	0	24
FR2373	2011-07-27 09:15	STN			ENBAL	738		09:19	09:09	179:0	0	0	0	
NH1672	2011-07-27 10:00	CON			HALFL	320				0	0	0	0	
KO002	2011-07-27 10:00	KRW			SPEEH	AT5		09:31	202	40	0	0	0	20
OHY905	2011-07-27	Cancel			TOSB1	301	10:40	179:0	0	0	0	0	0	26
FCT81	2011-07-27	Approaching			OWATE	AT7		10:35	300	0	0	0	0	20
NH1602	2011-07-27	Create Arr. Mkt								0	0	0	0	
NH1592	2011-07-27	Create Dm-Mgt			HAIJNA	320		11:10	162:4	0	0	0	0	24
B1405	2011-07-27	Send RQM Mgt								0	0	0	0	
MDK46	2011-07-27	Send RQM LDM			SBBBV	320		10:40	179:0	0	0	0	0	24

Summary

Departure operations

Show Extended Columns

Flight	Departure	Trace	Dst	Lib.	Ra.	Date	Ch.	Position	Reg	Type	Delays	ATD	ETD	Pax
LQ0612	2011-07-27 08:35	VNAV							SPLLB	734	DL36		09:57	
FR2373	2011-07-27 09:50	STN								738				
KO013	2011-07-27 10:30	NHRO							HALFL	320				
NH1581	2011-07-27 10:30	BOV												
PC702	2011-07-27 11:15	NEL							HAIJNA	320				
NH1731	2011-07-27 11:35	NVO								320				
OHY906	2011-07-27 11:35	AVT												
NH1661	2011-07-27 11:45	DTM							HAIJNA	320				
MDK46	2011-07-27 12:45	SSH												
LH1645	2011-07-27 13:00	MAC												

Summary

System settings
User management
Scheduler
Messages
Operations
Ramp
Ramp dashboard
Type B Messaging
Aeron Planner

**Thanks for your
attention!**

