

Twas the night before Christmas and all through the  
village not a creature was stirring, not even a mouse.  
Santa was missing and the villagers were worried, they  
had to search every house.



You need to go from house to house and search for him.  
Knock on each door and solve the math problem to see  
who is in the house.





Peer through the  
window and check to  
see if Santa is there



Before I tell you if Santa is here, you need to answer this problem:

$$24 + 15 =$$

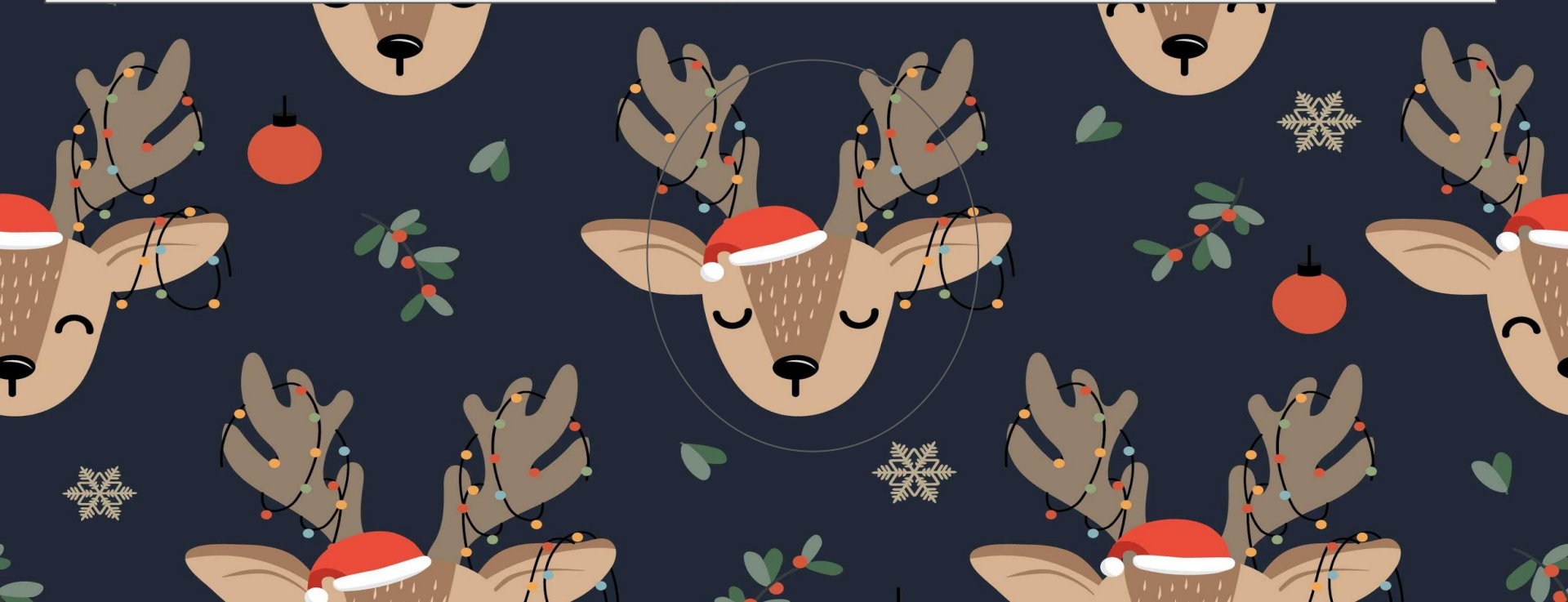


49

39

19

Oops, that's not right, click on the reindeer to go back and try again.





Oh yes!! You did it! Click on the  
present to see if Santa is here.



No, he isn't here,  
try another house.





Peer through the  
window and check to  
see if Santa is there





Before I tell you if Santa is here, you need to answer this problem:

$$25 + 75 =$$

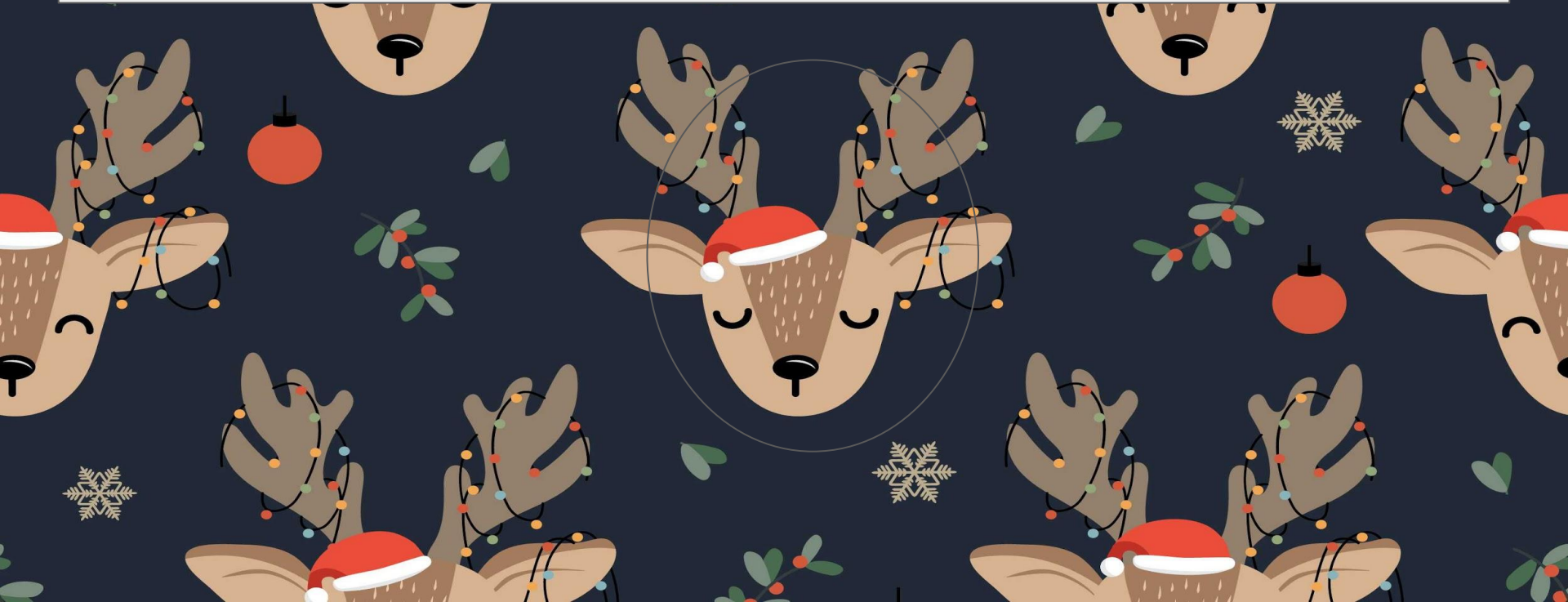


100

80

90

Oops, that's not right, click on the reindeer to go back and try again.



Oh yes!! You did it! Click on the  
present to see if Santa is here.





No, he isn't here,  
try another house.



Peer through the  
window and check to  
see if Santa is there



Before I tell you if Santa is here, you need to answer this problem:

$$82 - 11 =$$



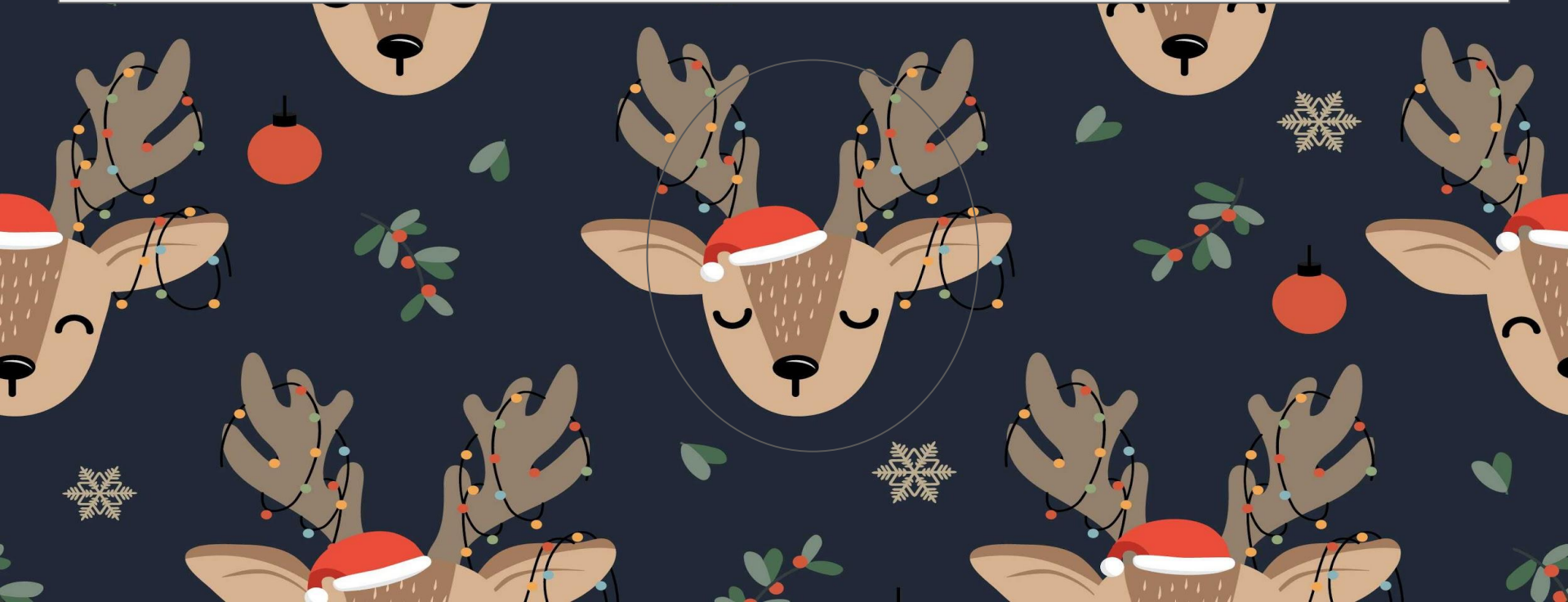
72

93

71



Oops, that's not right, click on the reindeer to go back and try again.



Oh yes!! You did it! Click on the  
present to see if Santa is here.



No, he isn't here,  
try another house.





Peer through the  
window and check to  
see if Santa is there



Before I tell you if Santa is here, you need to answer this problem:

$$26 + 35 =$$

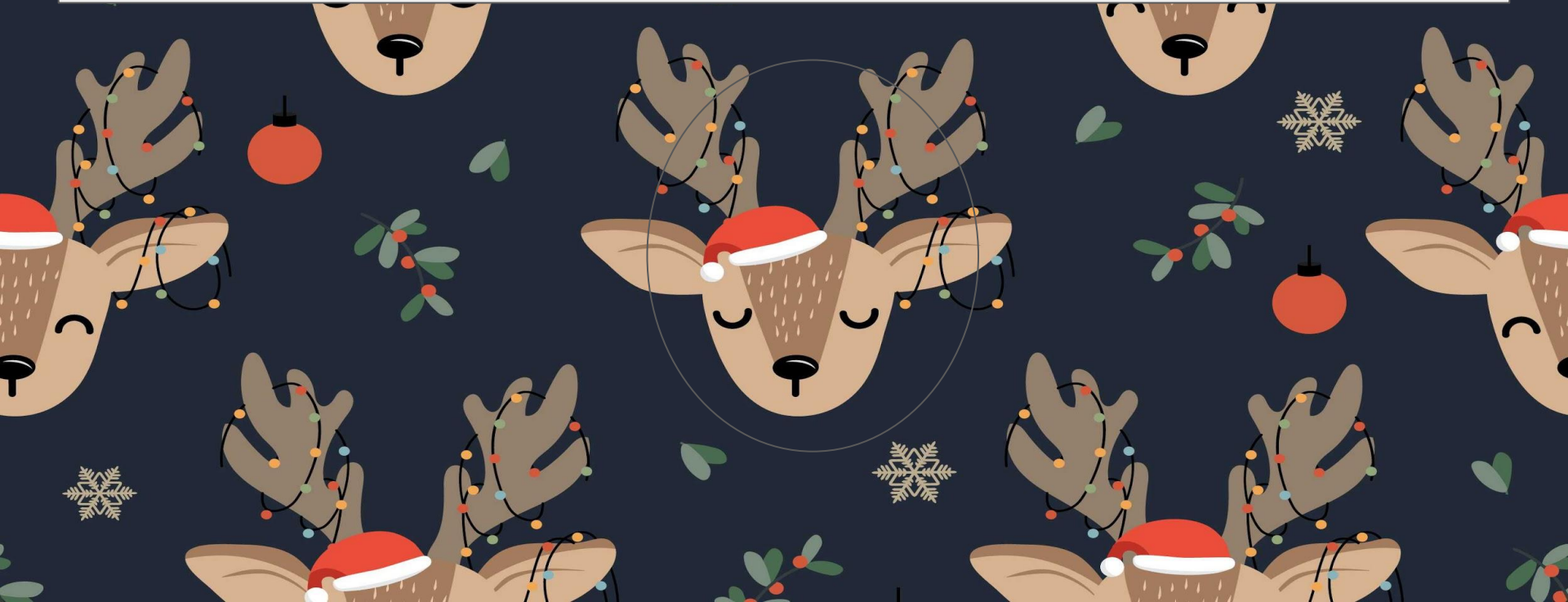


51

60

61

Oops, that's not right, click on the reindeer to go back and try again.





Oh yes!! You did it! Click on the  
present to see if Santa is here.



No, he isn't here,  
try another house.





Peer through the  
window and check to  
see if Santa is there





Before I tell you if Santa is here, you need to answer this problem:

$$38 + 53 =$$

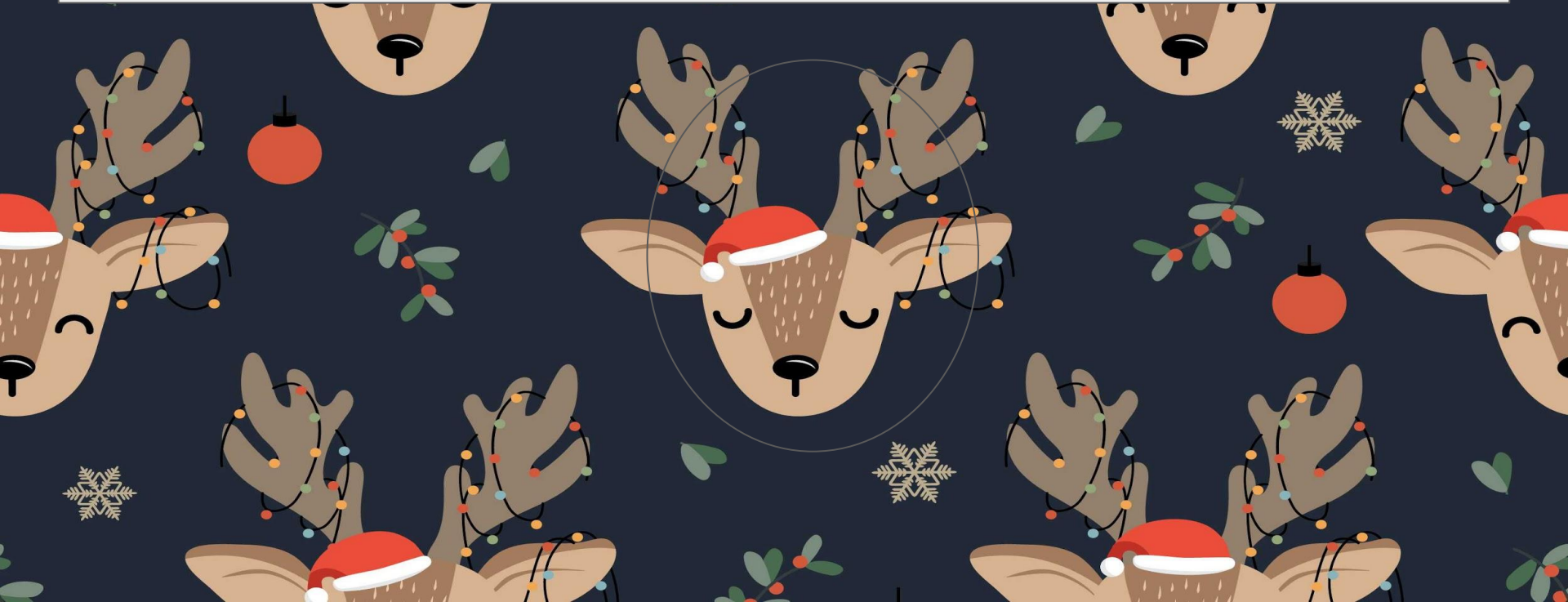


91

81

15

Oops, that's not right, click on the reindeer to go back and try again.



Oh yes!! You did it! Click on the  
present to see if Santa is here.





No, he isn't here,  
try another house.



Peer through the  
window and check to  
see if Santa is there



Before I tell you if Santa is here, you need to answer this problem:

$$80 - 24 =$$



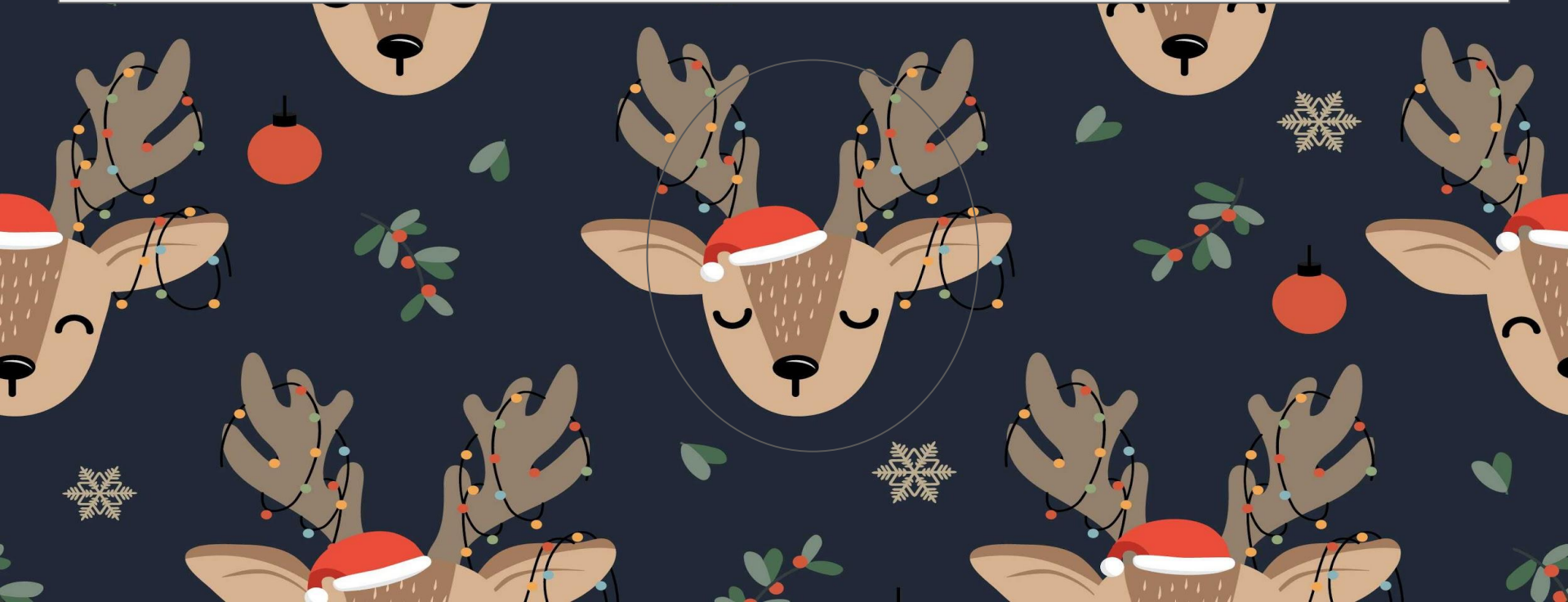
66

64

56



Oops, that's not right, click on the reindeer to go back and try again.



Oh yes!! You did it! Click on the  
present to see if Santa is here.



No, he isn't here,  
try another house.





Peer through the  
window and check to  
see if Santa is there



Before I tell you if Santa is here, you need to answer this problem:

$$63 - 34 =$$

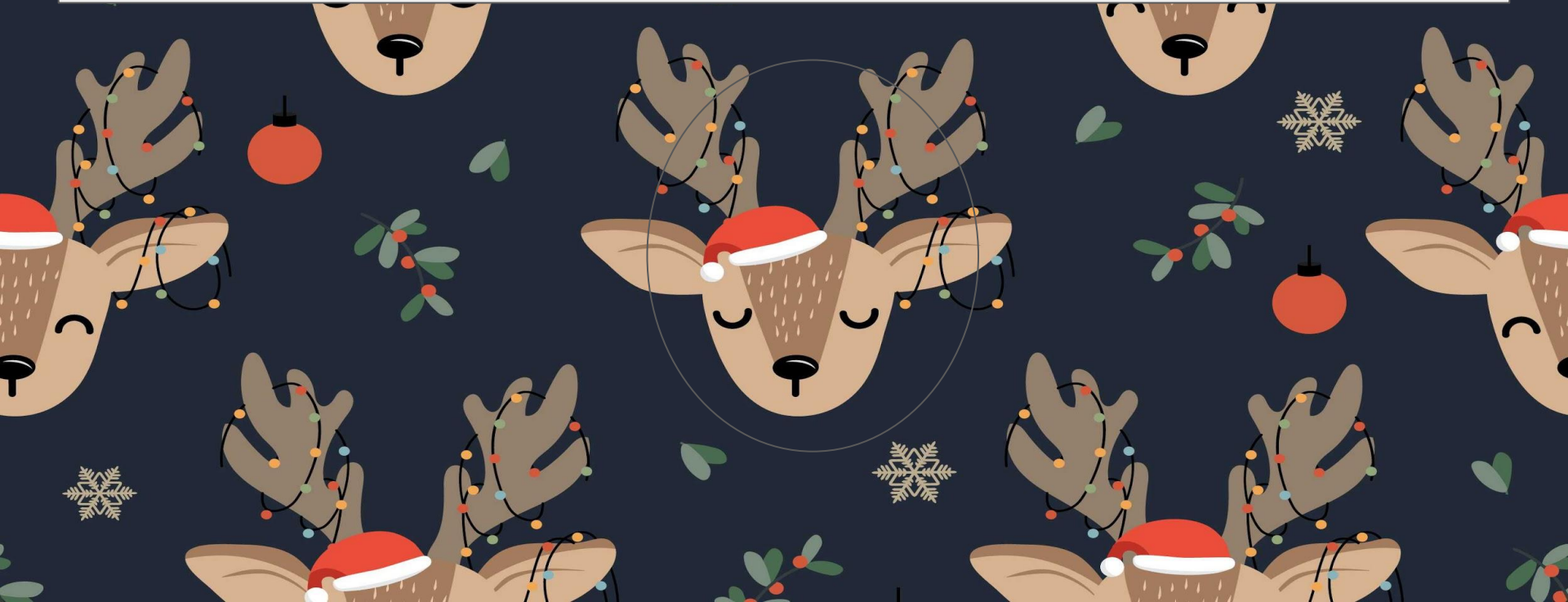


29

30

31

Oops, that's not right, click on the reindeer to go back and try again.





Oh yes!! You did it! Click on the  
present to see if Santa is here.



Here he is!

