

# Predložky času -prepositions of time - in, on , at

Mgr. Soňa Pavlíková

# Prepositions of Time

General

Specific

## IN

**Parts of days**  
(morning, afternoon)

**Months**  
(April, May)

**Years**

**Months**

**Centuries**

## ON

**Holidays with 'day'**  
(Labor Day, Christmas Day)

**Days of the week**  
(Monday)

**Days of the month**  
(Fourth of July)

**Dates**  
(April 15, my birthday)

## AT

**Holidays without 'day'**  
(Easter, New Year's)

**Time**  
(noon, midnight, 6:00, 10 am)

# Predložky - prepositions

- ▶ Na opis **času** sa v angličtine využívajú tri predložky: **in**, **on** a **at**.
- ▶ Napríklad:
  - My grandmother was born **in** the 19th century.
  - I am so sorry, I am not working **on** Monday.
  - I will be there **at** 5 p.m.

# Základné pravidlo používania predložky in

Poznámky do  
zošita:

- ▶ Popisuje **rozsiahle obdobie, dlhý časový úsek** - mesiace, roky ,storočia (in 1990, in 16th century)
- ▶ Príklady:
- ▶ My birthday is **in** June.
- ▶ We sometimes go to the beach **in** August.
- ▶ I became a teacher **in** 1990.
- ▶ I usually visit Croatia **in** July.

# Základné pravidlo používania predložky on

Poznámky do  
zošita:

- ▶ Predložka on sa spája so špecifickejším určením času (on Wednesday, on 25th of November).
- ▶ On - sa viaže so **špecifickým časovým údajom**. Ide najmä o **dni v týždni, dátumy a špecifické dni ako Nový rok alebo deň narodenín**.
- ▶ Príklad:
  - He gave me a present **on** my birthday.
  - He plays football **on** Fridays.
  - You never watch TV **on** Mondays.

# Základné pravidlo používania predložky at

Poznámky do  
zošita:

- ▶ Predložka at sa týka **veľmi presného určenia času** (at 6 a.m., at two p.m.).
- ▶ Napríklad:
- ▶ We get up **at** 8 o 'clock.
- ▶ The children go to bed **at** nine o 'clock.
- ▶ I always have lunch **at** one o 'clock.

## AT

at 9 o'clock

at Christmas

at Easter

at noon

at night

at midnight

at the weekend

at lunch time

at dinner

at that time

at the moment

## IN

in the morning

in the evening

in the afternoon

in the Easter holiday

in the Christmas holiday

in the winter

in the summer

in 2013

in the 21st century

in August

in December

in three hours  
(three hours from now)

## ON

on Mondays

on Friday

on Saturday

on Sunday morning

on Friday evening

on Easter Monday

On Christmas Day

on Saturday night

on June 13th

on a summer evening

on a cold day

on that day

My birthday is      in      May.



## May 2020

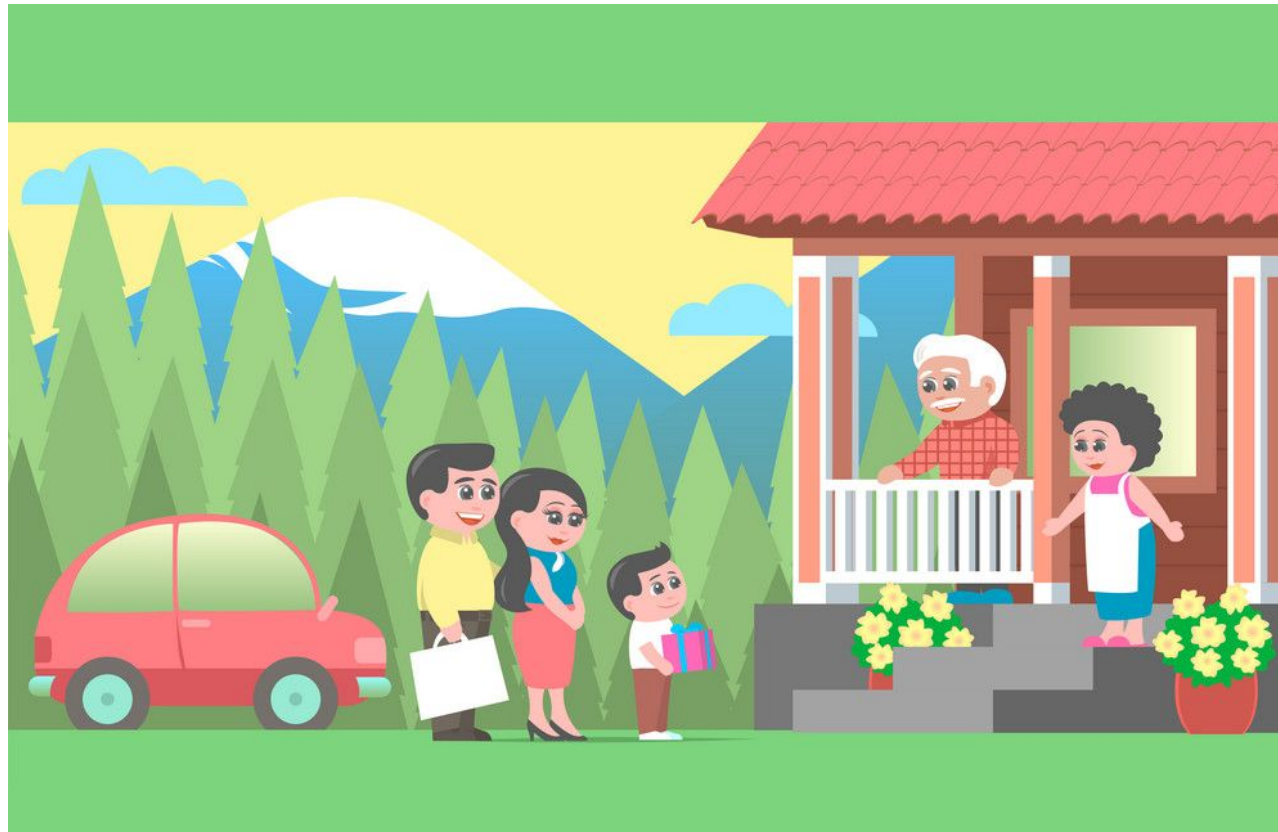
Sunday	Monday	Tuesday	Wednesday	Thursday	Friday	Saturday
					1	2
3	4	5	6	7	8	9
10	11	12	13	14	15	16
17	18	19	20	21	22	23
24	25	26	27	28	29	30
31						



We sometimes go to the beach in August.



They visit family \_\_\_\_\_ in \_\_\_\_\_ July.



She never wears a coat in August.



He never wears a shorts in the winter.



She plays basketball on Mondays.



He plays football on Tuesdays.



He always **has** a shower on Wednesdays.



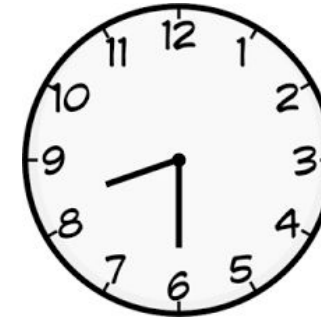


She never goes to school on Sundays.

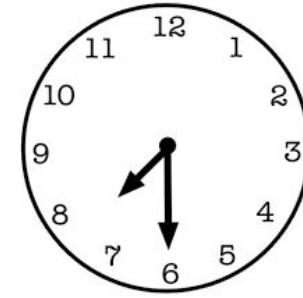




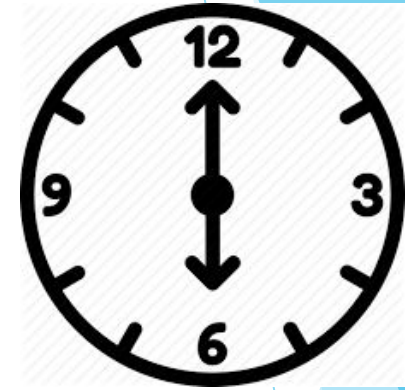
He always goes to bed at half past eight.



She always **has** breakfast at half past seven.



He always **does** his homework at six o'clock.



They always watch TV at six o'clock.



She always **helps** her mum at six o'clock.

