

**'A tricky, frisky snake
with sixty super scaly stripes.'**



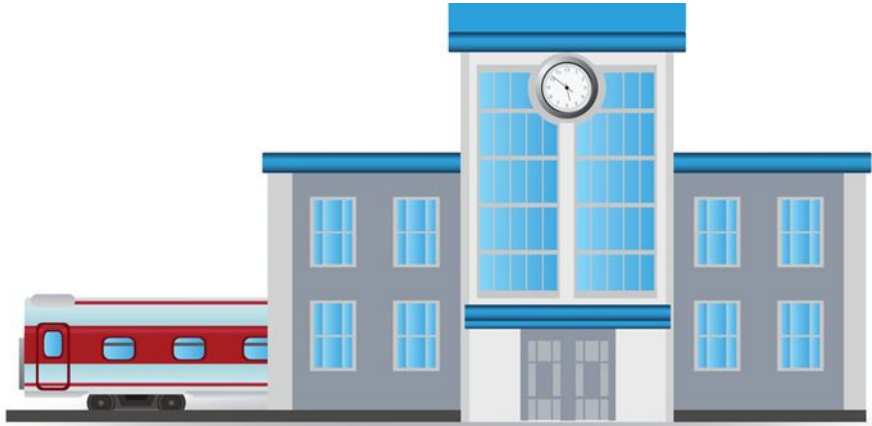


ENGLISH
Singsing

A WORKING DAY!

Module 2





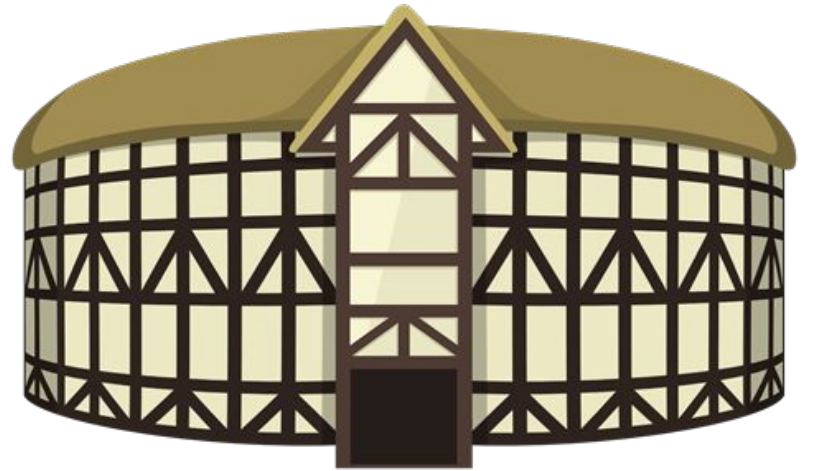
station



garage



cafe



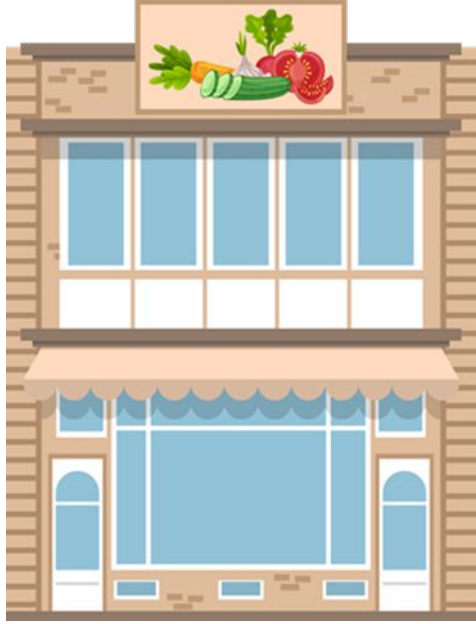
theatre



baker's



hospital



greengrocer's



post office

1 Listen and repeat.



station



garage



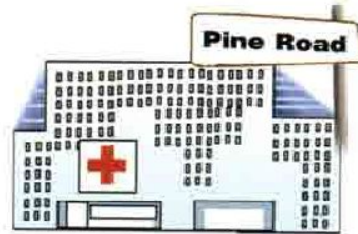
café



theatre



baker's



hospital



greengrocer's



post office



2 Chit-Chat

A: Excuse me, where's the Animal Hospital?

B: It's in Bridge Street.



station



café



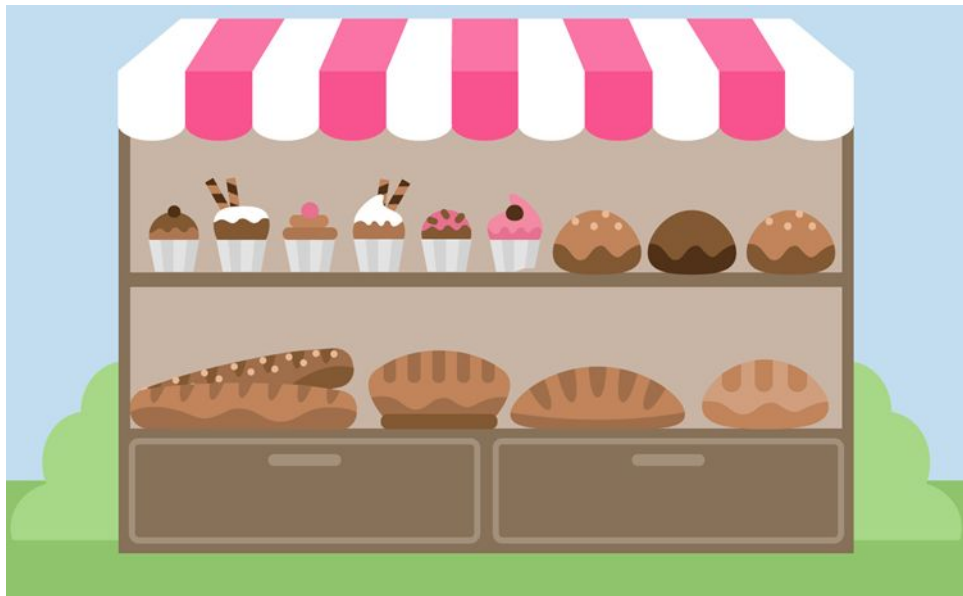
theatre



You go there to have lunch

cafe

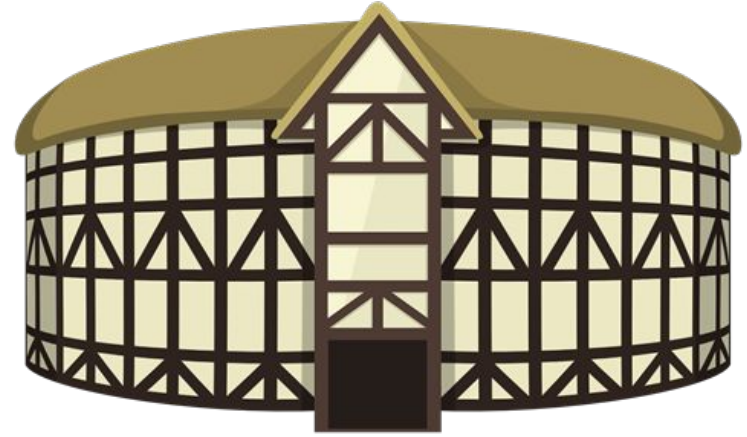
.....



You go there to buy fresh bread

baker's

.....



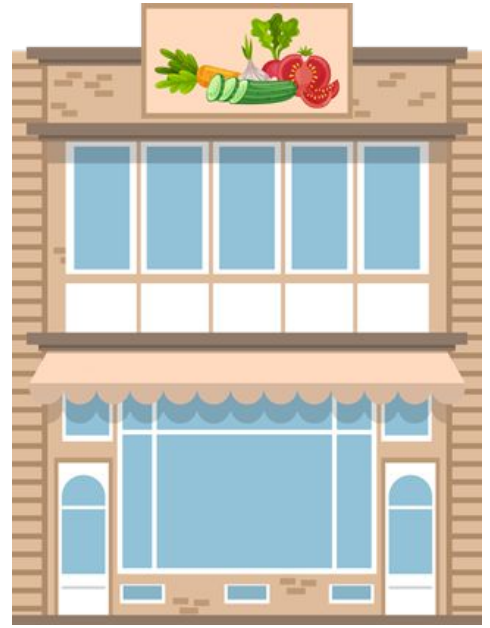
You go there to watch different performances -

· **theatre** ·

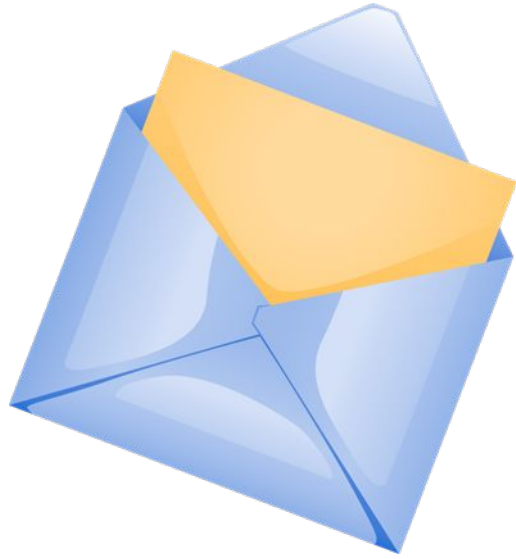


You go there when you are sick- ..

hospital

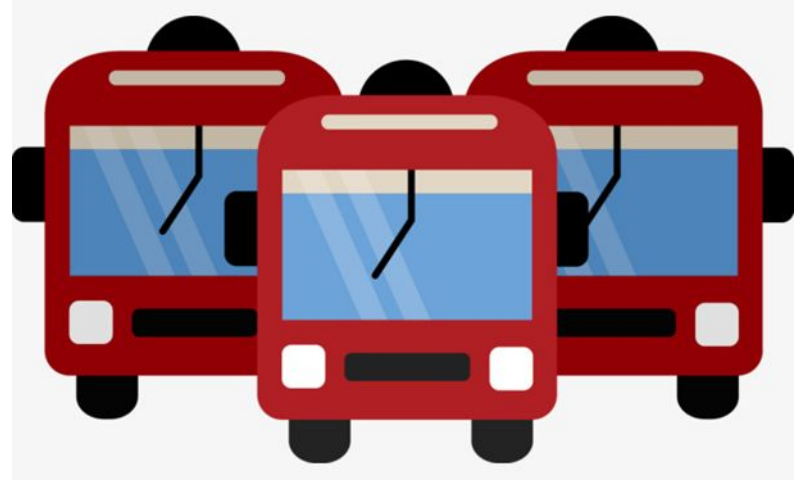


You go there to buy vegetables and fruit –
greengrocer's



You go there to buy envelopes and stamps -

post-office



It's a place where you can buy tickets
and get on a train or a bus -

station



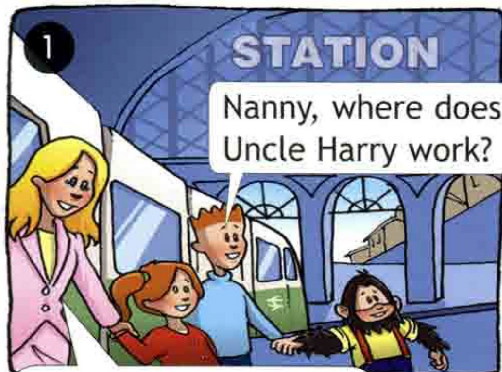
It's a place where people keep their cars –
garage



The Animal Hospital



3 Listen and read.



Well, let's go and see!

4 Where's Chuckles? Read again and choose.

A Under the chair.

B Behind the curtain.



This is Fifi!
She needs an injection.



Homework



Do you like our lesson?

interesting

difficult

wonderful

dull

great

super

boring

How are you feeling?

