



Canberra

The capital of Australia.

THE PRESENTATION WAS MADE BY A STUDENT OF THE KS-9-21 GROUP

GRISHIN ARTEM

Canberra

- ▶ Basic information
- ▶ Heraldic symbolism
- ▶ History reference
- ▶ Geographical position
- ▶ Climate
- ▶ Population
- ▶ Nature and flora
- ▶ Animal world
- ▶ Sights

Basic information

- ▶ Canberra is the capital of the Commonwealth of Australia. Translated from the Aboriginal language, this word means "meeting place." Canberra is the largest city in Australia, located inland, not on the coast. Canberra is the capital of the Commonwealth. Translated from the Aboriginal language, this word means "place meeting." Canberra is Australia's largest city, located inland rather than on the coast.



Heraldic symbolism

- ▶ National flag of Canberra



- ▶ Coat of arms of Canberra



National flag of canberra

- ▶ In the left third of the flag is the constellation of the Southern Cross on a blue background, the remaining two thirds is occupied by the coat of arms of Canberra on a dark yellow background, in the left third of the flag is the constellation of the Southern Cross on a blue background, the remaining two thirds is occupied by the coat of arms of Canberra on a dark yellow background.



Coat of arms of Canberra

- ▶ The motto "For the queen, the law and the people" is inscribed on the coat of arms of Canberra. Shield holders - black and white swans - symbolize the two races of the population of Australia - aborigines and Europeans. The motto "For the queen, law and people" is inscribed on the coat of arms of Canberra. swans symbolize the two races of the population of Australia - Aboriginal and European.



History reference

- ▶ In 1908, the territory of present-day Canberra was chosen as the future capital of the Commonwealth of Australia, and in 1908, the territory of present-day Canberra was chosen as the future capital of the Commonwealth of Australia.



- ▶ Sydney
- ▶ Melbourne



Vegetable world

- ▶ Natural vegetation is represented by various types of acacia, eucalyptus, pine, many tropical herbaceous plants. Natural vegetation is represented by various types of acacia, eucalyptus, pine, many tropical herbaceous plants.



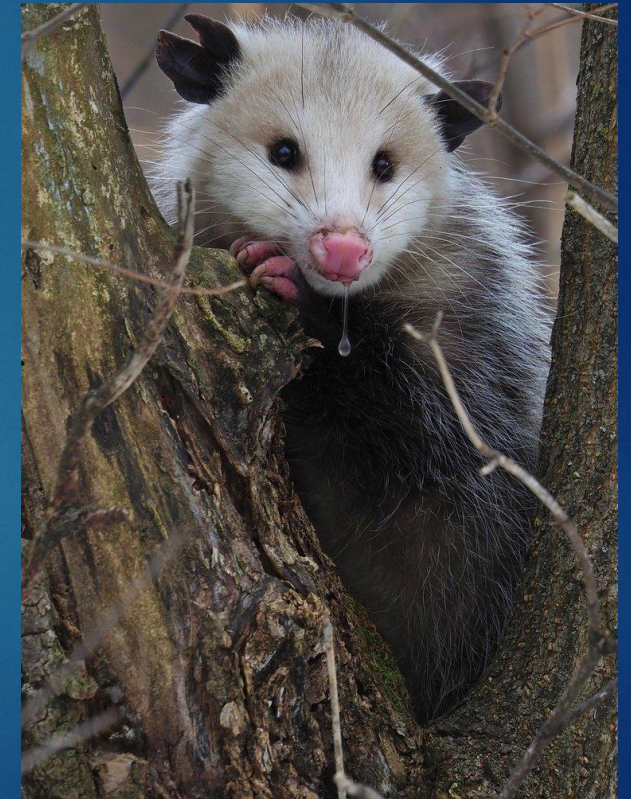
Canberra nature

- ▶ The rainforests of Australia come close to the city. As a result, tourists and residents of the city need very little time to get out into nature. Australia's famous beaches, Snowy Mountains and ski resort are just two hours' drive from Canberra. There are also more than 30 wineries operating here. The rainforests of Australia come close to the city. As a result, tourists and residents of the city need very little time to get out into nature. Australia's famous beaches, Snowy Mountains and ski resort are just two hours' drive from Canberra. There are also more than 30 wineries operating here.



Animal world

- ▶ In the suburban areas of the capital, the wild dog dingo, opossum, is widespread.



Wobmat



Bandicoot



Kangaroo



Koala



Platypus



Ant - eater



The End

- ▶ The presentation was made by a student of the KS-9-21 group
- ▶ Grishin Artem
- ▶ Thanks for attention