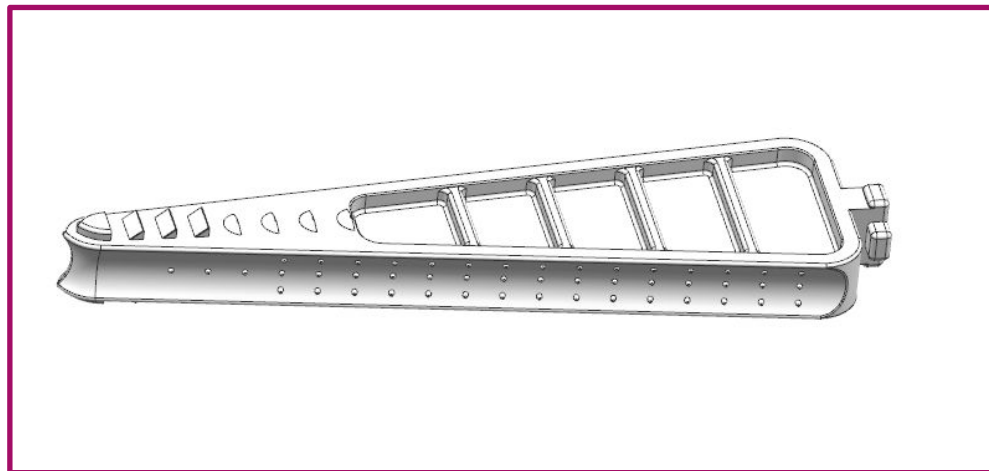
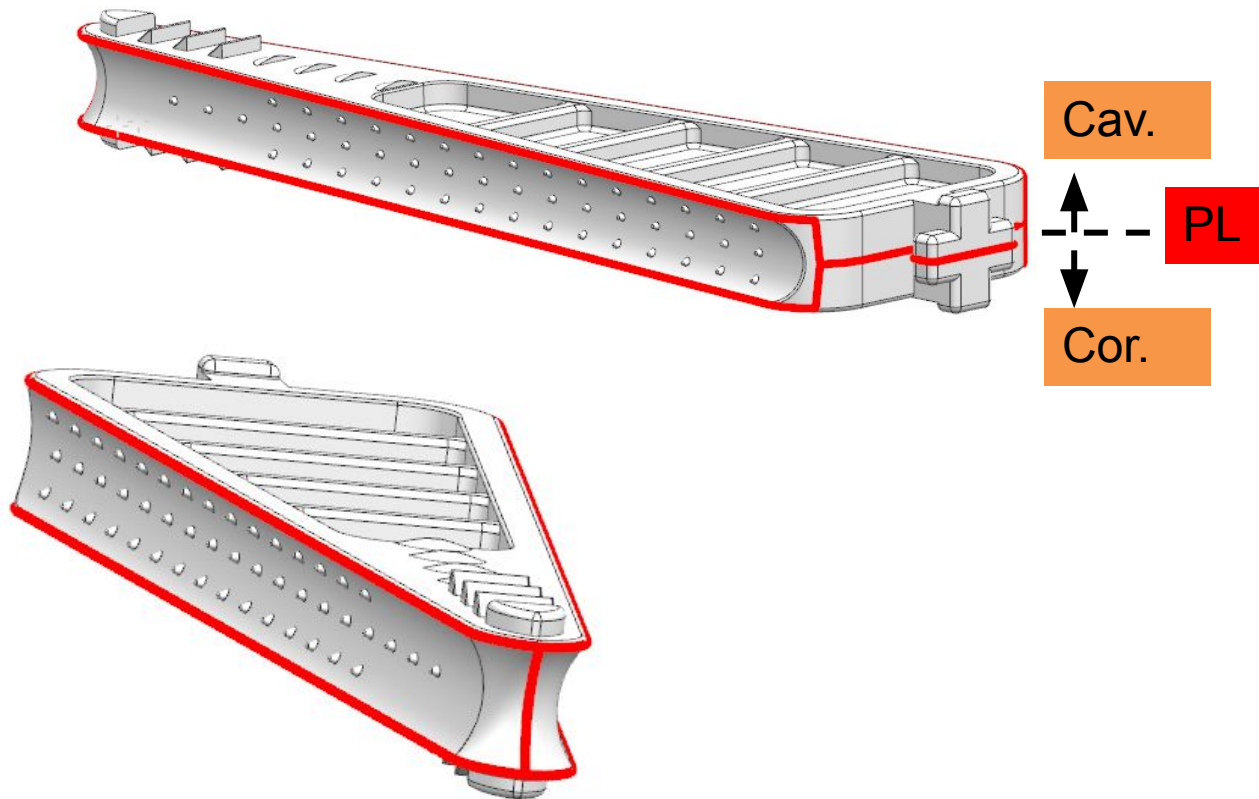


1 产品介绍

1	产品编号	Plastic mould 12035.03 (M2-2)
2	产品名称	12035.03
3	数据版本	V1
4	产品大小(mm)	31X12X114
5	产品壁厚(mm)	
6	产品材料	LDPE-30%/寒冷剂+发紫外线剂+ 色 料-8%/POLYPROPYLENE-62%
7	产品收缩率(%)	
8	产品表面处理	抛光



2 P.L 确认

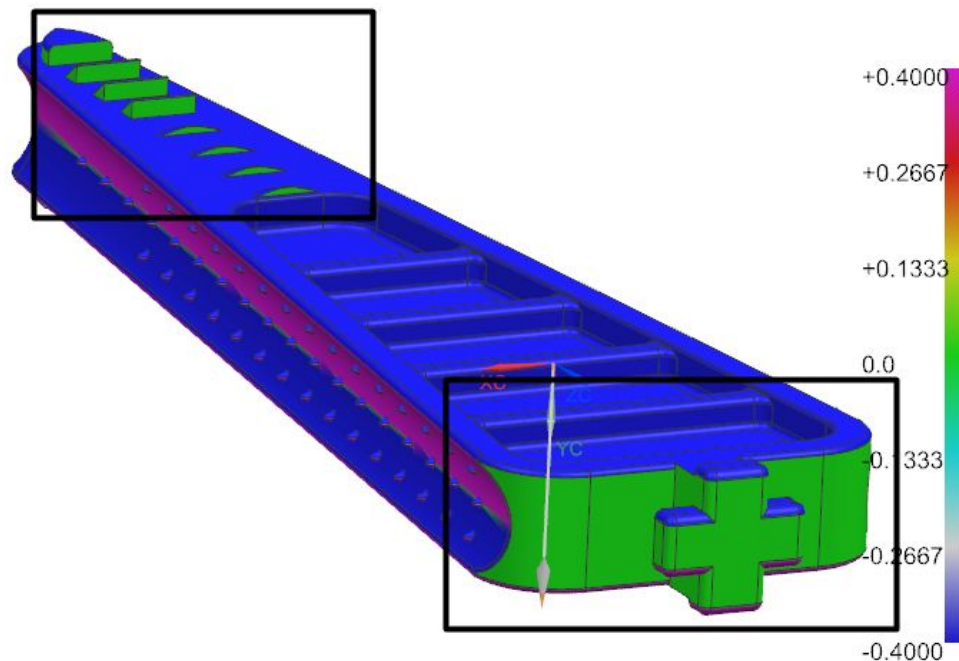


问题描述 issue

客户回复customer reply

红色线为产品分型线，请确认。
The red line is parting line, please check it.

3 脱模角度分析

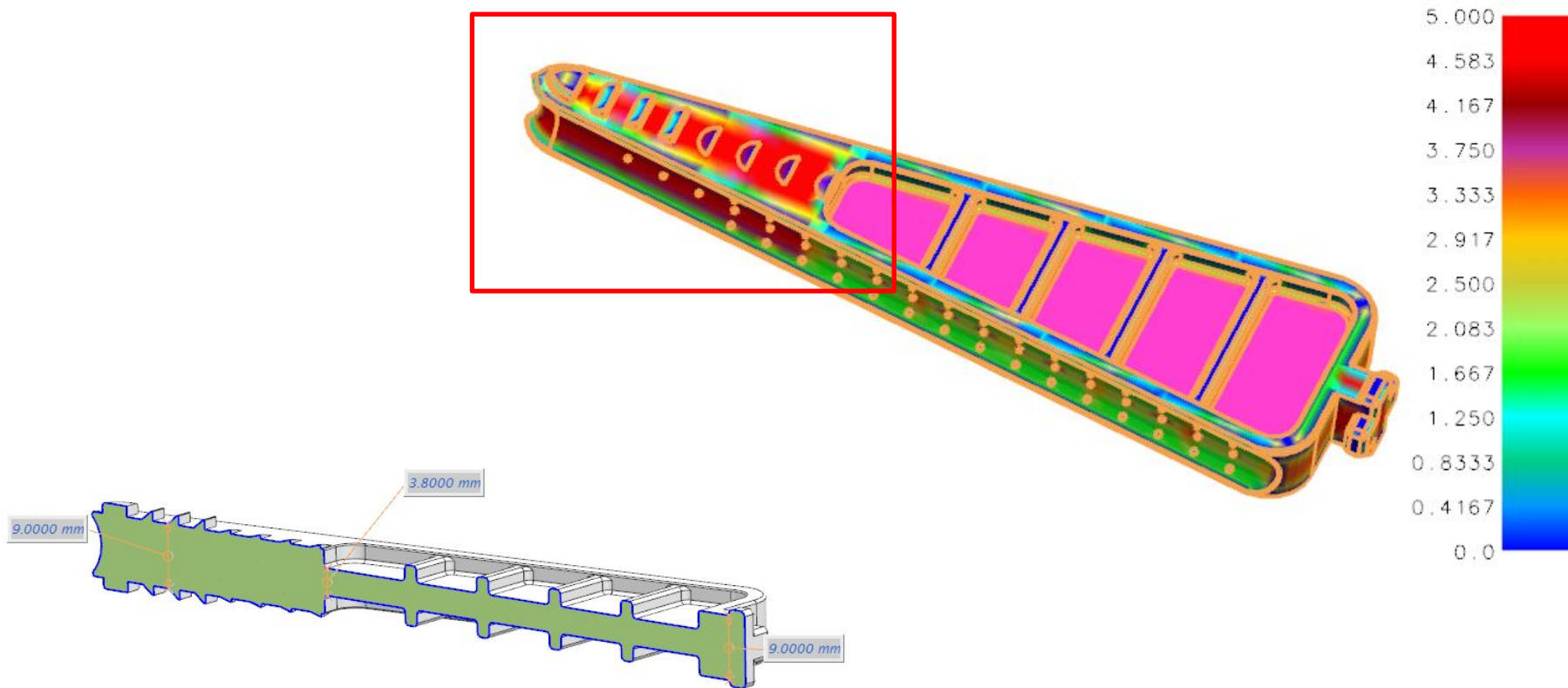


问题描述 issue

客户回复customer reply

型芯型腔黑框位置绿色面均无斜度
 确认能否增加 0.5° 脱模斜度。(修改处涉及装配面)
 There are no draft angle at black frame area both for core and cavity side). Please check whether we can add 0.5° draft angle. (The modify area will influence assembly).

4 壁厚分析



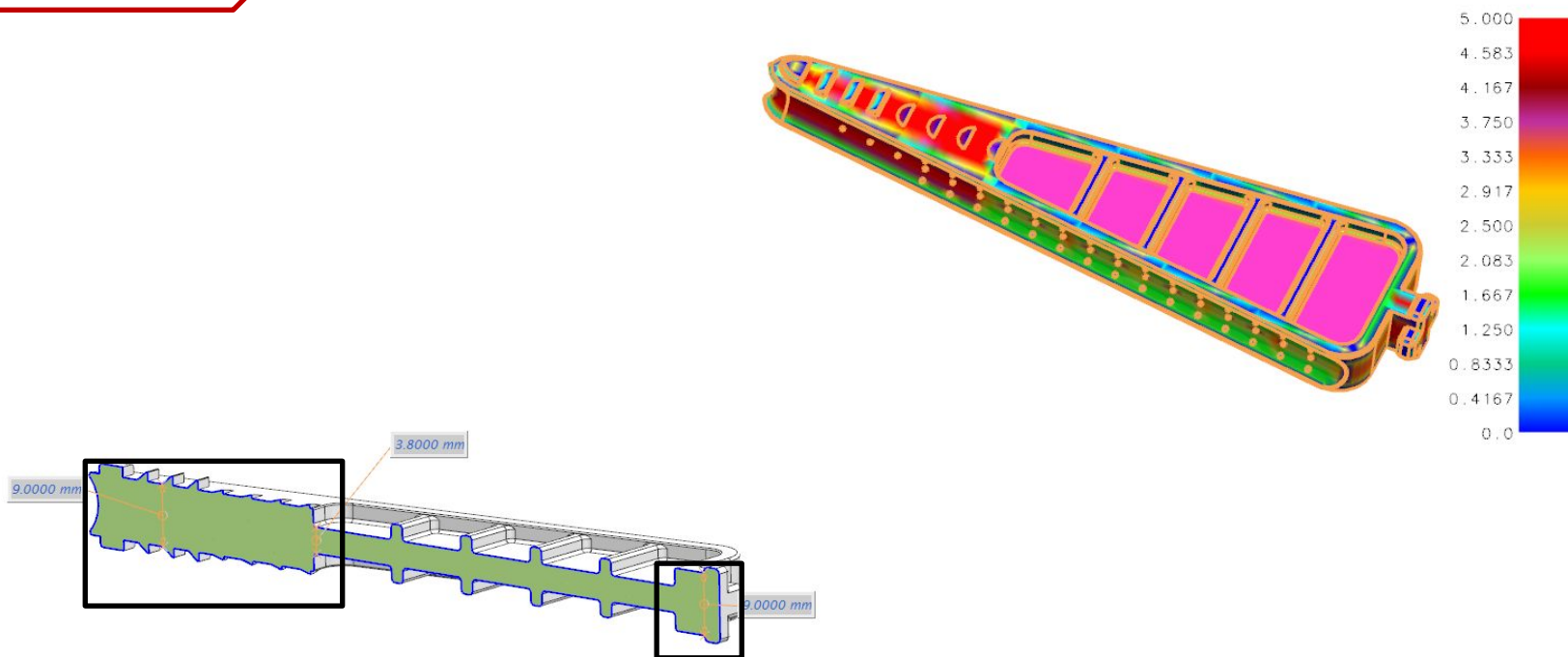
问题描述 issue

客户回复 customer reply

产品壁厚如图分布。

The thickness of product is shown as picture.

5 缩痕分析



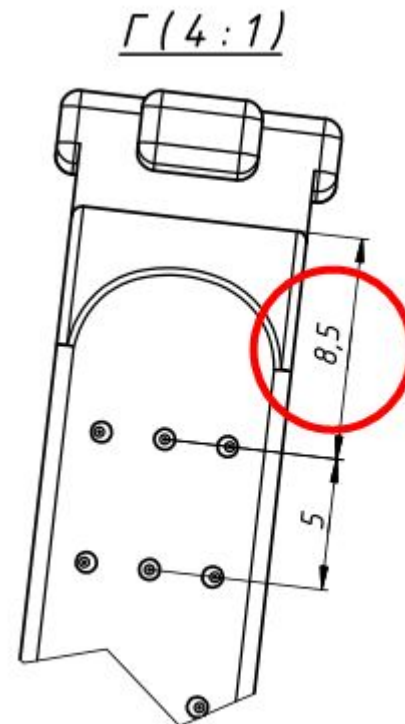
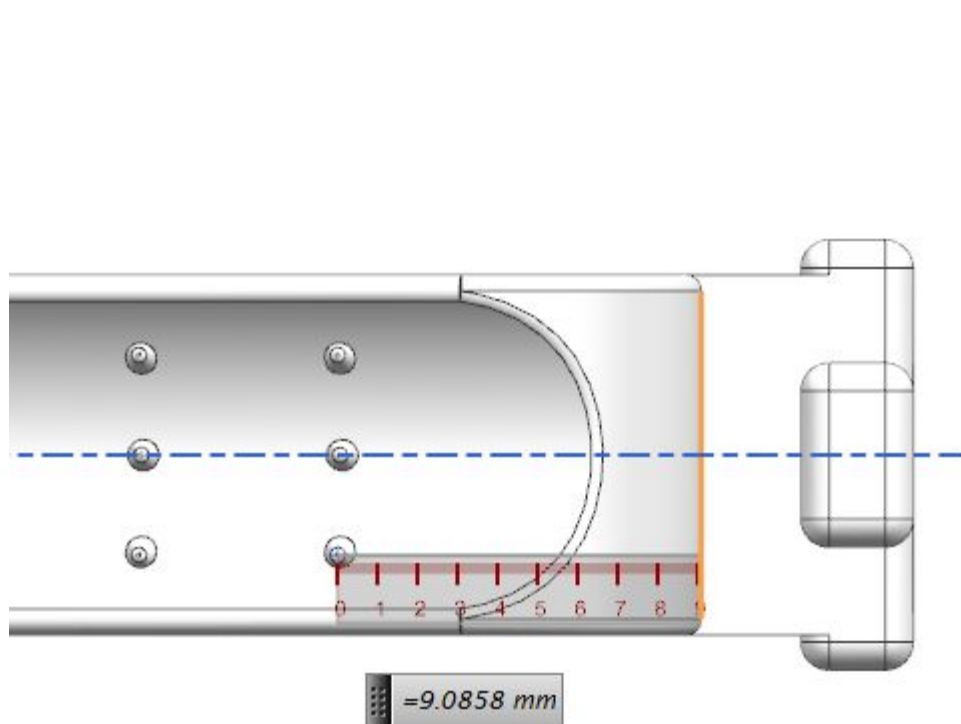
问题描述 issue

产品壁厚引起的缩痕, 确认是否可接受。

There will have sink mark due to thick thickness, please check whether it is acceptance.

客户回复 customer reply

6 产品与图纸对比



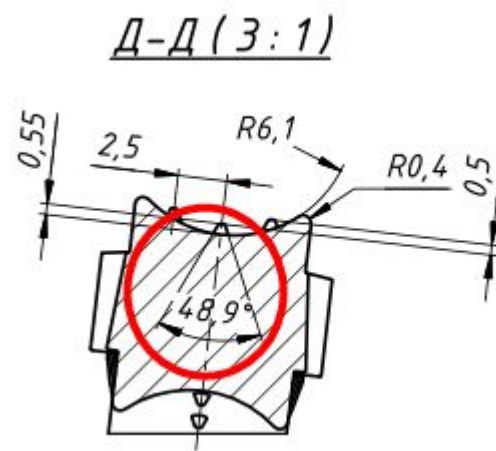
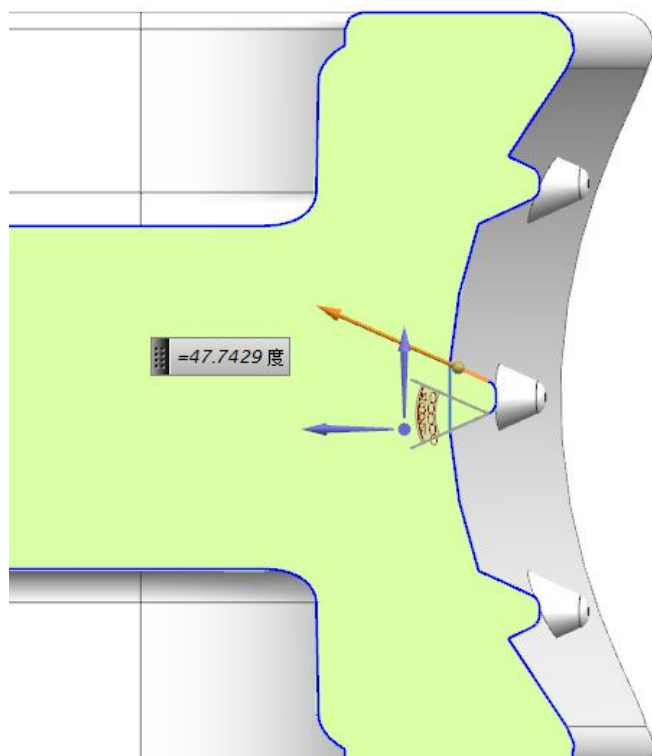
问题描述 issue

客户回复 customer reply

产品与图纸对比存在误差, 请确认

There are difference between 3D data and 2D drawing. Please check which one is correct.

7 产品与图纸对比



问题描述 issue

客户回复 customer reply

产品与图纸对比存在误差, 请确认
There are difference between 3D data and 2D drawing.
Please check which one is correct.

WE ARE JUST ON THE
THANK YOU. WAY

