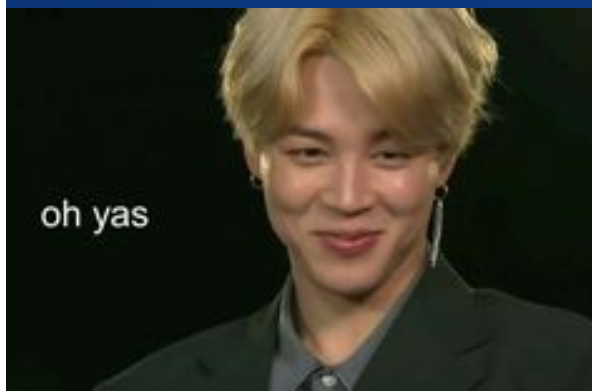


Historical tour



Busan Metropolitan City



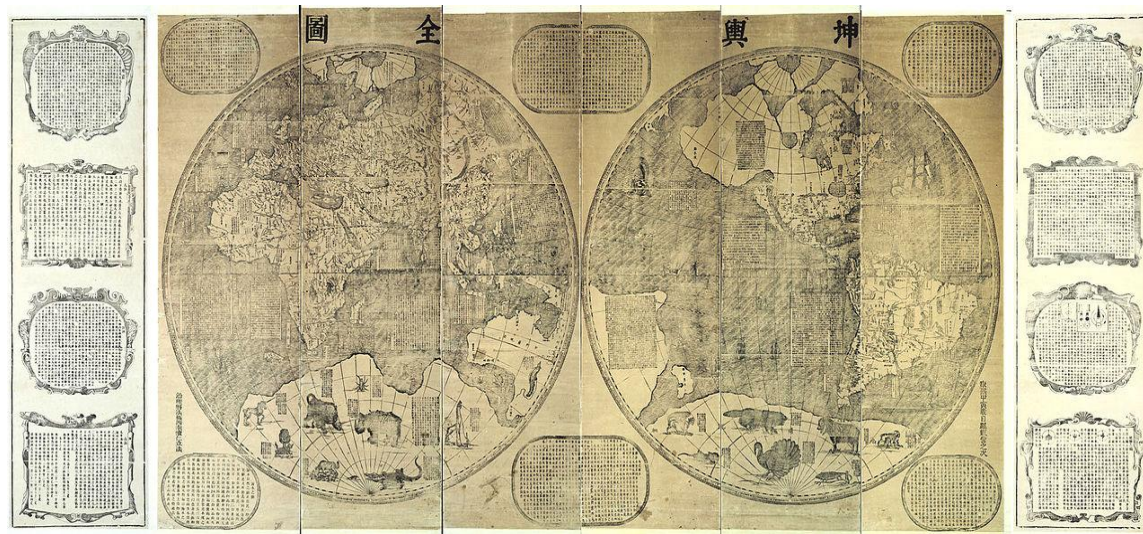


Yongdusan Park

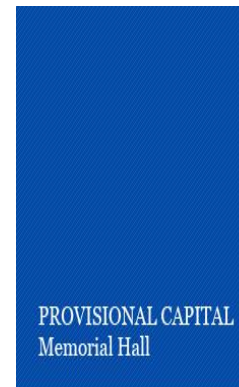
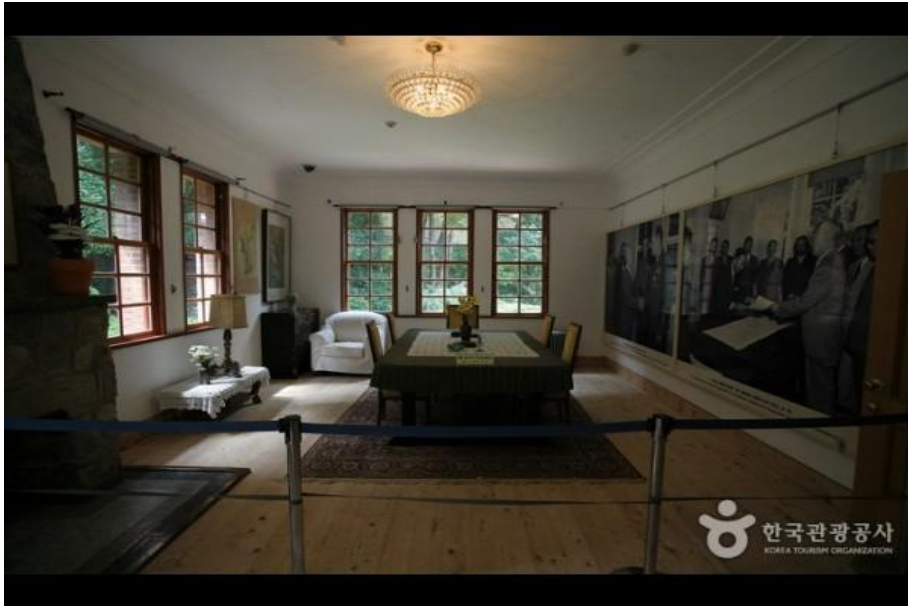




Busan Museum



Provisional Capital Memorial Hall



Beomeo-sa Temple



The Gamcheon Culture Village

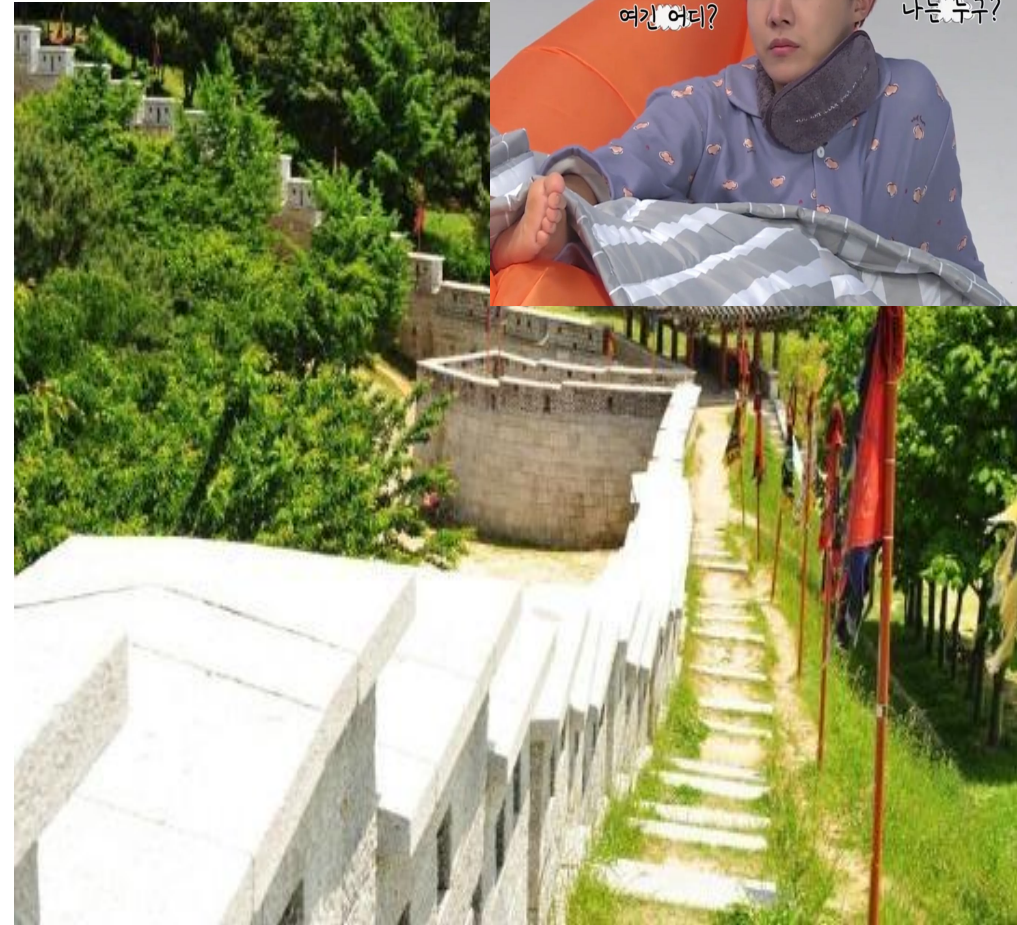




Geumjeongsanseong



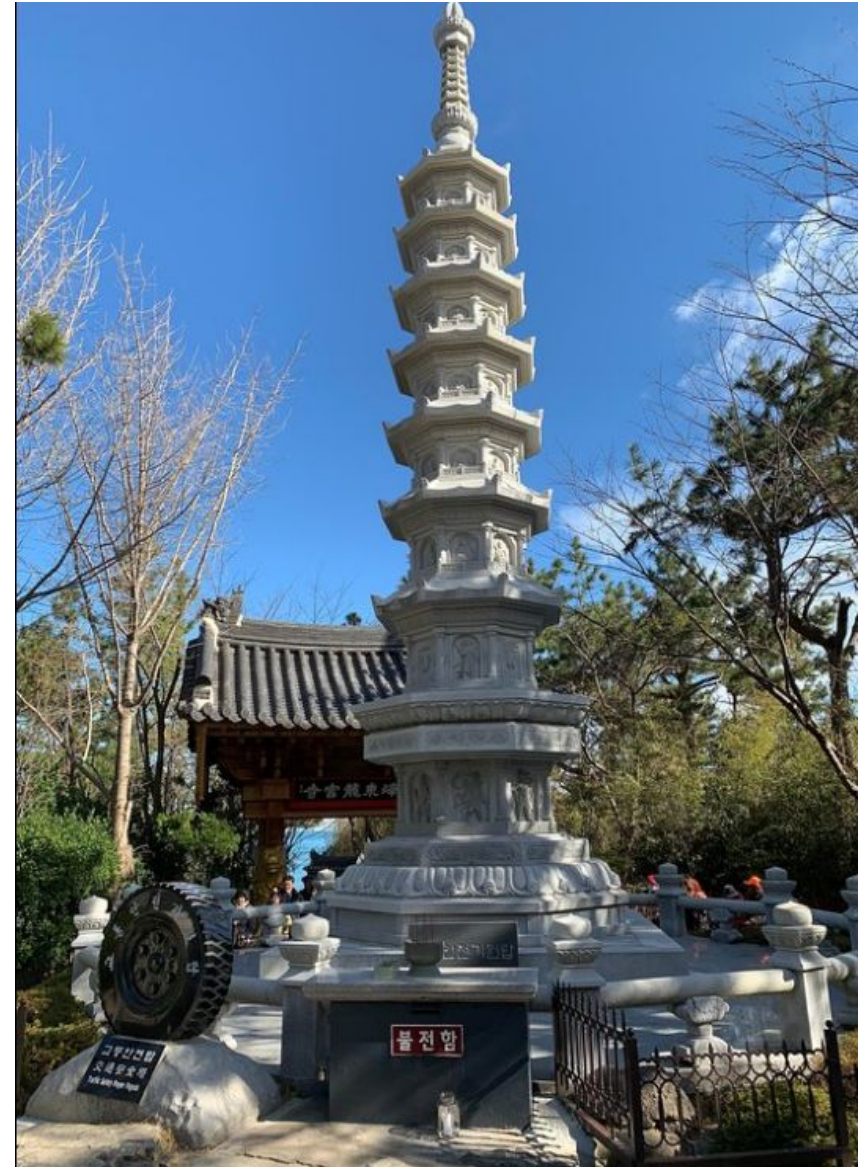
The Dongnaeeupseong Fortress

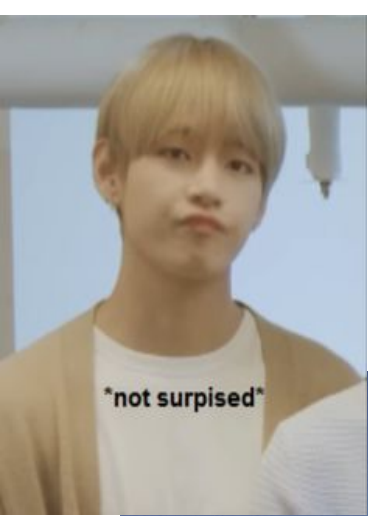


Chungnyeolsa



Haedong Yonggung Temple





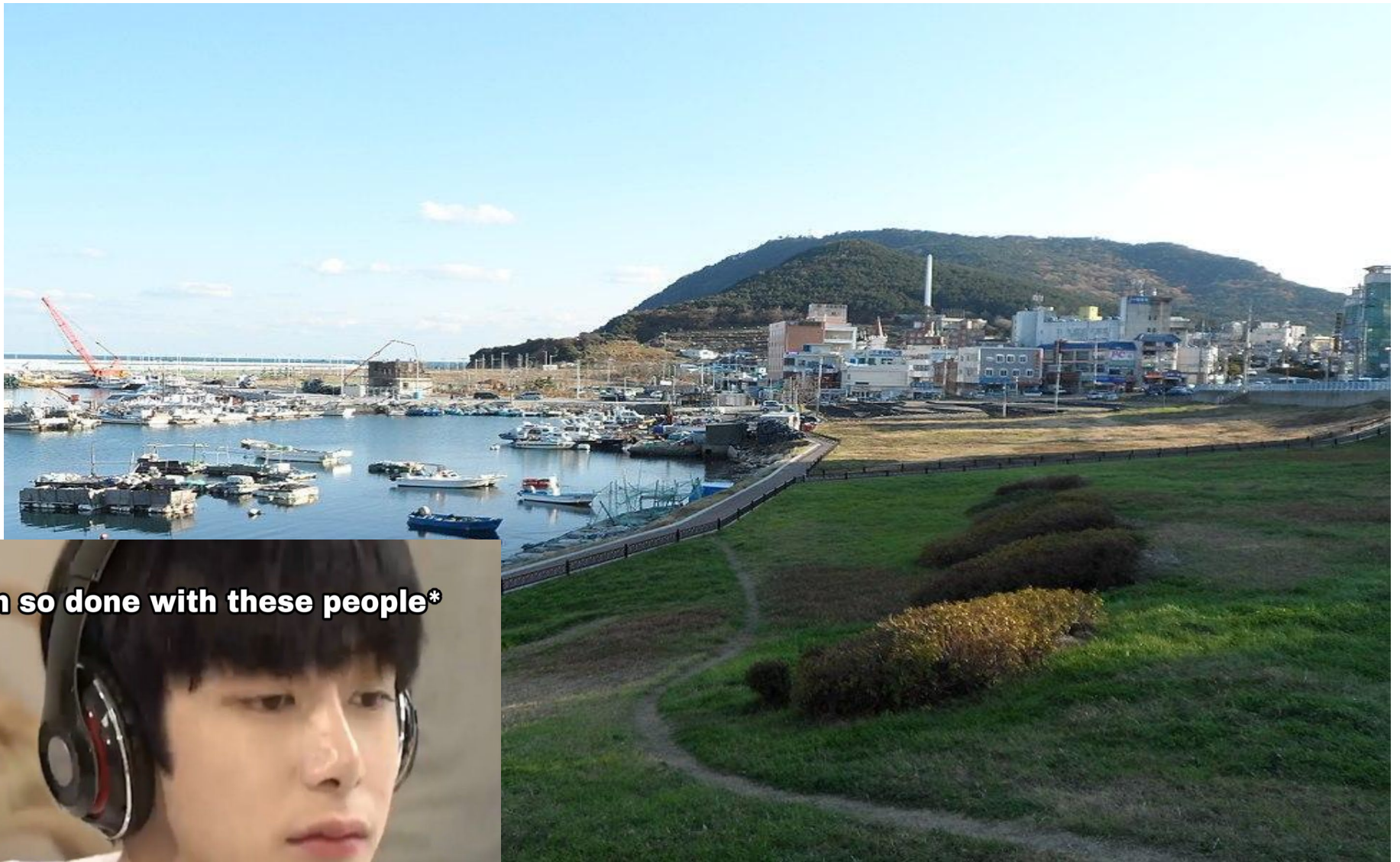
Busanjinjiseong



Yeongdodaegyo



Shell Mound in Dongsam-dong



i'm so done with these people



The Busan Modern History Museum



Thanks for watching

