

5.4

Is it far?



Where does the tourist want to go?



Tourist: Er ... Excuse me ... I'm looking for the Science Museum.

Amy: The Science Museum? Yes, it's ...

Tom: Hey, I know where it is, it's in Green Street.

Tourist: Where's Green Street? Is it far?

Tom: No, it isn't. Go straight on, then turn right ...

Amy: You mean turn left, Tom.

Tom: Oh yes, turn left. Go past the cinema and the museum is on the left. It's opposite the park.

Amy: But it's on the right, Tom.

Tom: What's on the right?

Amy: The museum, Tom. You don't know your left from your right!



How can we ask for directions?

How can we give directions?

Communication Directions

Asking for directions

Excuse me. Where's *North Street*?

I'm looking for a *library*.

How can I get to *the Science Museum*?

Is it far?

Giving directions

It's in/on *Green Street*.

Go straight on.

Go past *the cinema*.

Turn left. / Turn right.

It's on the left. / It's on the right.

3 Look at the pictures and give directions.
Use the Communication box to help you.



Turn right.



Turn



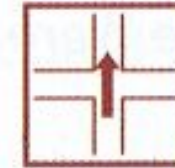
left.
Go



It's on



the left.
It's on the



right.
Go

past.

straight

Communication Directions

Asking for directions

Excuse me. Where's *North Street*?

I'm looking for a *library*.

How can I get to *the Science Museum*?

Is it far?

Giving directions

It's in/on *Green Street*.

Go straight on.

Go past *the cinema*.

Turn left. / Turn right.

It's on the left. / It's on the right.




◀ 1 of 12 ▶ ✓ 0

I the to How park can get ?

☰ Submit Answers ☒

Go Getter (2) 5.4 [Share](#)



4  **2.52** Circle the correct answer. Then listen and check. Show the library on the map in Exercise 5. Is it A, B or C?

Boy: Excuse me. I'm looking ¹ for / to the library.

Girl: There's a library in / at North Street.

Boy: Where's North Street? Is it far?

Girl: No, it isn't. Go straight ² on / in, past the hotel. Then ⁴ go / turn right. The library is ⁵ in / on the left, opposite the bank.

Boy: Thanks!

Communication Directions

Asking for directions

Excuse me. Where's *North Street*?

I'm looking for a *library*.

How can I get to *the Science Museum*?

Is it far?

Giving directions


It's in/on *Green Street*.

Go straight on.

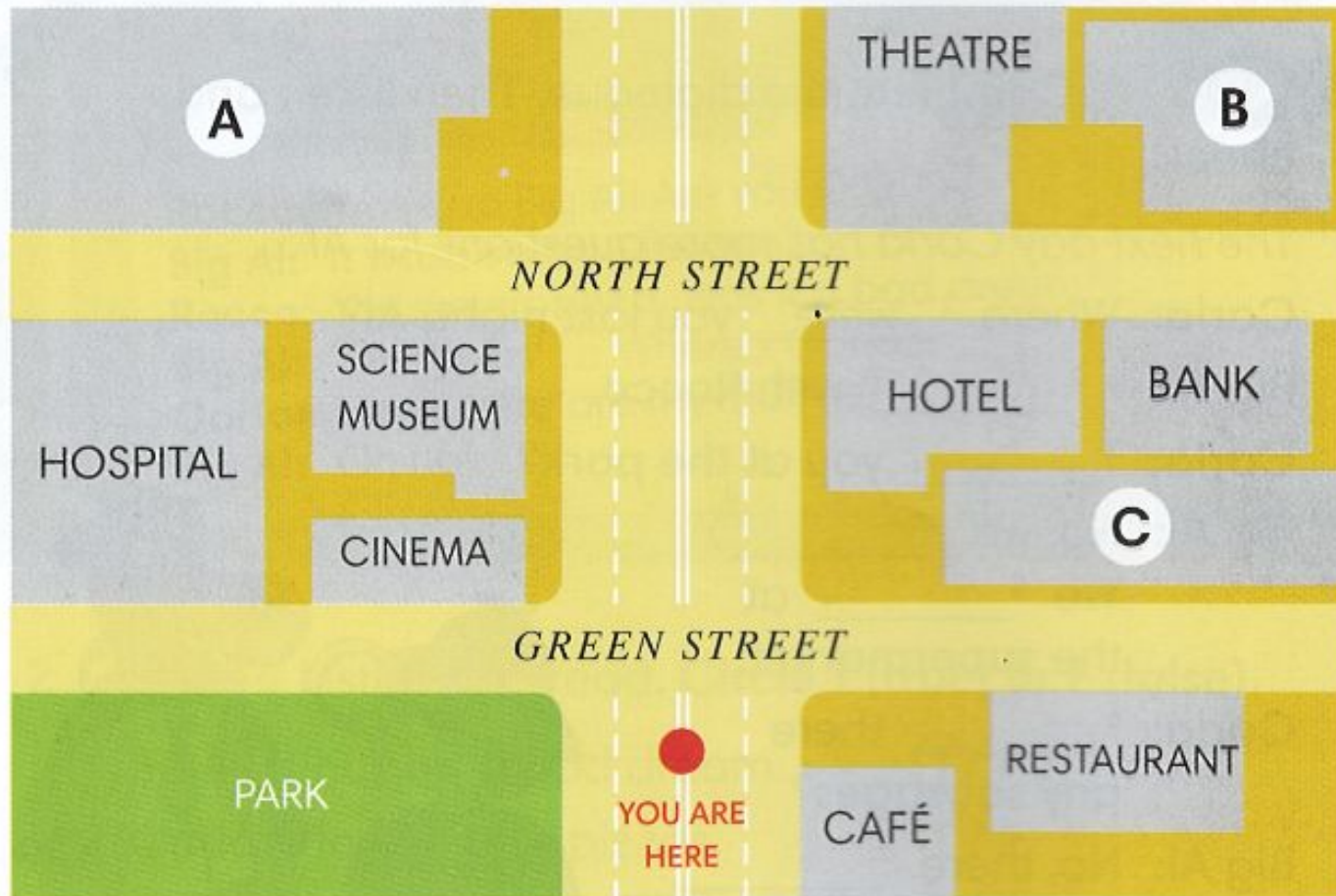
Go past *the cinema*.

Turn left. / Turn right.

It's on the left. / It's on the right.

5  **2.53** Listen, follow the directions and write A, B or C next to the places.

the stadium the supermarket



Communication Directions

Asking for directions

Excuse me. Where's *North Street*?

I'm looking for a *library*.

How can I get to *the Science Museum*?

Is it far?

Giving directions

It's in/on *Green Street*.

Go straight on.

Go past *the cinema*.

Turn left. / Turn right.

It's on the left. / It's on the right.

0:02

Excuse me. North Street? I am for a library.

How can I to the Science Museum?

Is it ?

Go on.

past the cinema.

It's on the .

The hospital is the right.

It is the shopping centre.

I am looking the shoe shop.

The sports centre is to the swimming pool.

can I get to the park?

Go straight on and then right.

- looking
- next
- straight
- turn
- far
- How
- on
- get
- where's
- Go
- left
- for
- opposite



Submit Answers



Go Getter (2) 5.4 (2)

Share

12 Directions

Asking for directions

Excuse me. Where's North Street?
I'm looking for a library.
I know how I got to the Balance Museum?
Is it far?

Giving directions

It's in/on Green Street.
Go straight on.
Go past the cinema.
Turn left. / Turn right.
It's on the left. / It's on the right.

1 Complete the directions with the words in the box.

Go left on opposite
past straight turn

Excuse me. Where's the hospital?



- 1 Go straight on.
- 2 Then _____ right.
- 3 Go _____ the bank.
- 4 Turn _____.
- 5 Go _____ on and then turn right.
- 6 The hospital is _____ the right.
- 7 It's _____ the museum.

2 Complete the dialogue.

A: Excuse me. I'm _____ for the History Museum. Is it _____?
B: No, it's not far. It's _____ Brown Street. Go _____ the bank. Then _____ right - that's Brown Street.
A: OK.
B: Is _____ on. The museum is _____ the left, opposite the park.
A: Thank you.

3 Look at the map. Complete the dialogues with one word in each gap.



- 1 A: Excuse me. Where's the cinema?
B: It's in ¹ River Street. ² _____ past the supermarket. Turn ³ _____ at the ⁴ _____. Then go straight on. The cinema is on the ⁵ _____, opposite the ⁶ _____.
- 2 A: Excuse me. How can I get to the park?
B: It's not far. Go ⁷ _____ on. Go past the ⁸ _____, café and the ⁹ _____. They are all on the right. The park is next to the bank, ¹⁰ _____ the right.
- 3 A: Excuse me. I'm looking for the shoe shop.
B: It's in River Street. Go ¹¹ _____. Then ¹² _____. The shoe shop is on the right.

4 Use the map in Exercise 3 to write your own dialogues.



- 1 A: Excuse me. Where's the library?
B: _____
- 2 A: Excuse me. How can I get to the museum?
B: _____

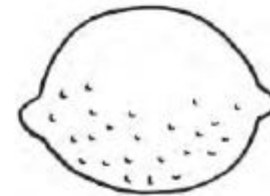
Extra Online Practice

Unit 5, Video and Communication
www.myenglishlab.com

Put the sentences in the correct order to make dialogues and act them out in pairs.
Then replace the underlined words with your own ideas or use the pictures. Act out the dialogues again.

Dialogue 1

- B: It's in Banana Street.
- A: Excuse me. Where's the library?
- A: Thanks!



Dialogue 2

- B: There's a supermarket in North Street.
- A: Where's North Street? Is it far?
- A: Excuse me. I'm looking for a supermarket.
- B: No, it isn't. Turn left and then go straight on.



Dialogue 3

- A: How can I get to the park?
- A: Thanks!
- B: Go past the hotel. It's on the right.

