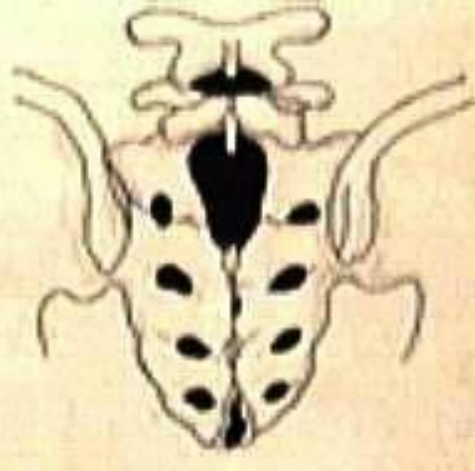


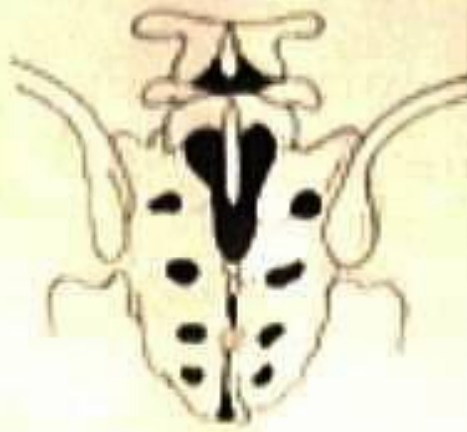
1. *Spina bifida occ. simplex S I*



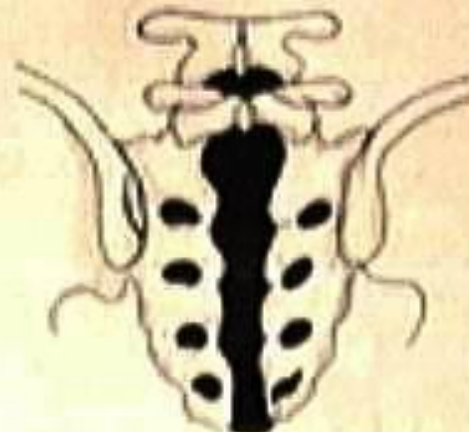
2. *Spina bifida occ. magna S I*



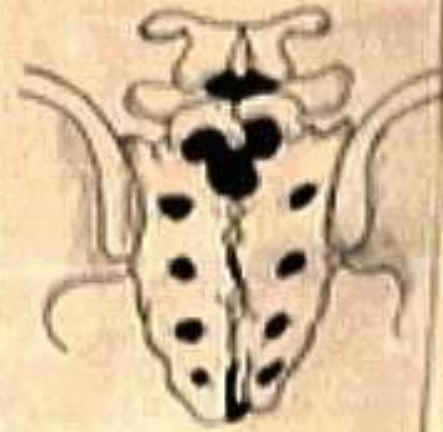
3. *Spina bifida occ. obliqua S I*



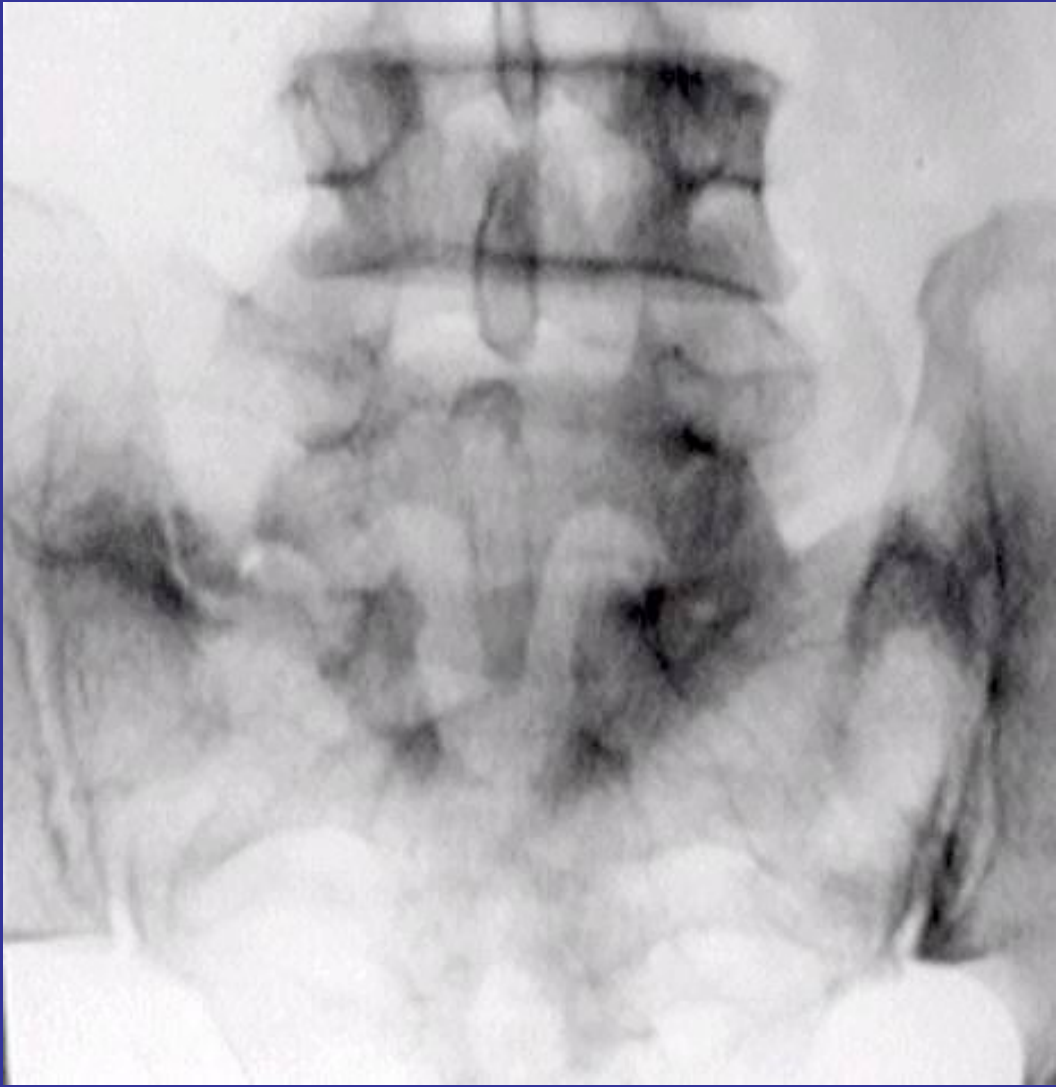
4. *Spina bifida occ. discreta*



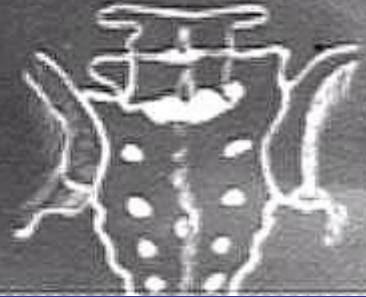
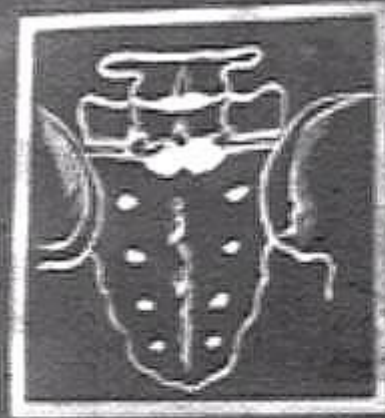
5. *Spina bifida occ. secretis totalis*

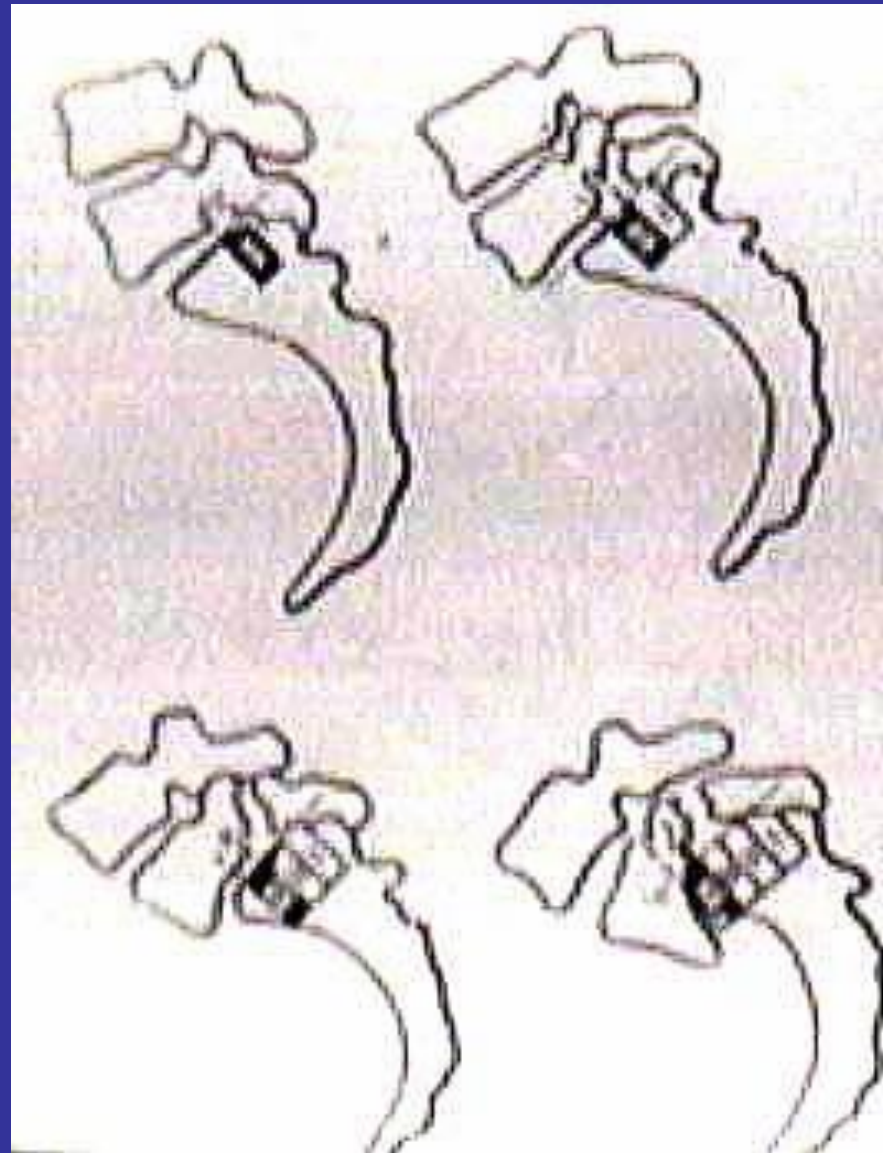


6. *Spina bifida occ. L3*



# ПЕРЕХОДНЫЕ ПОЗВОНКИ .



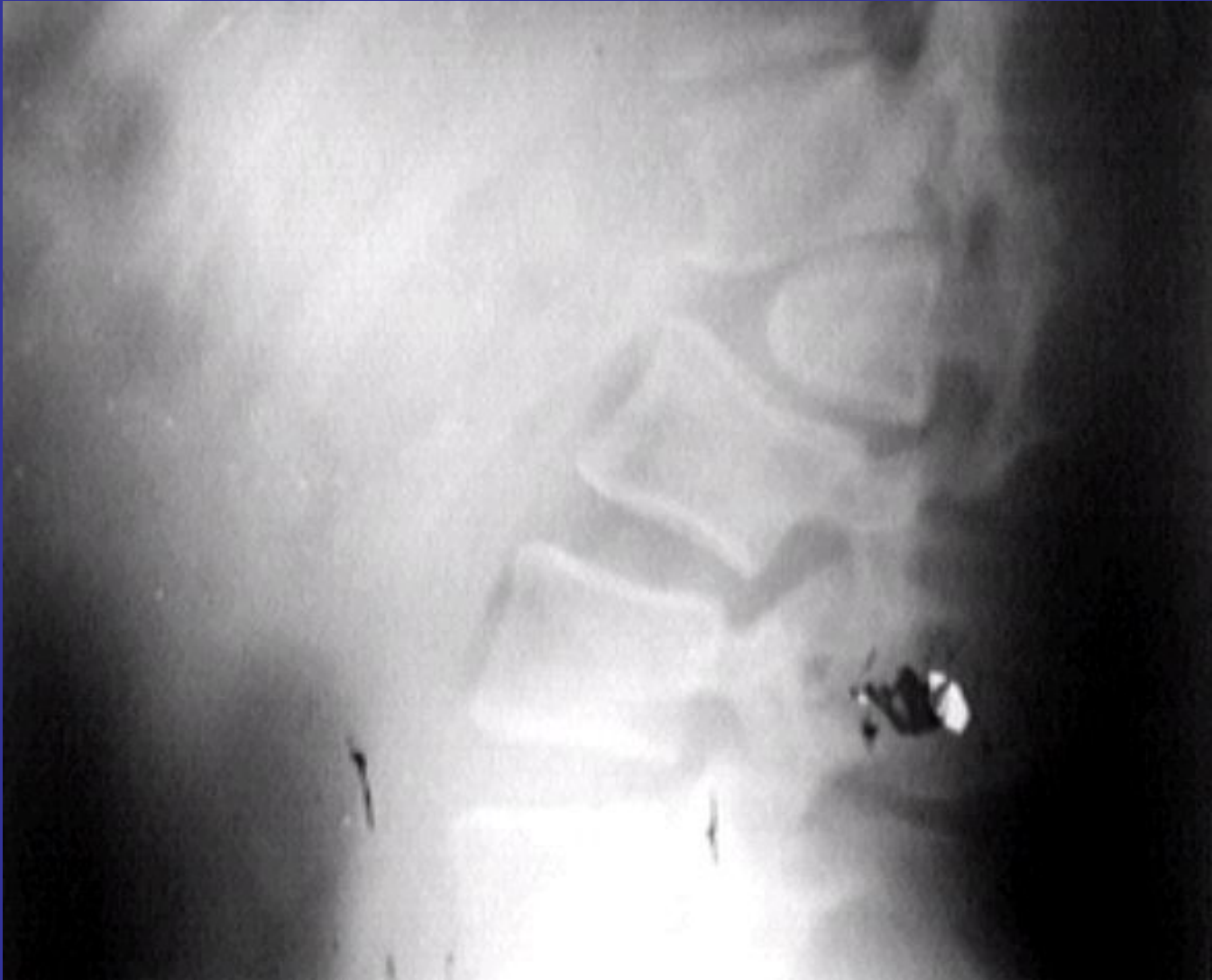
























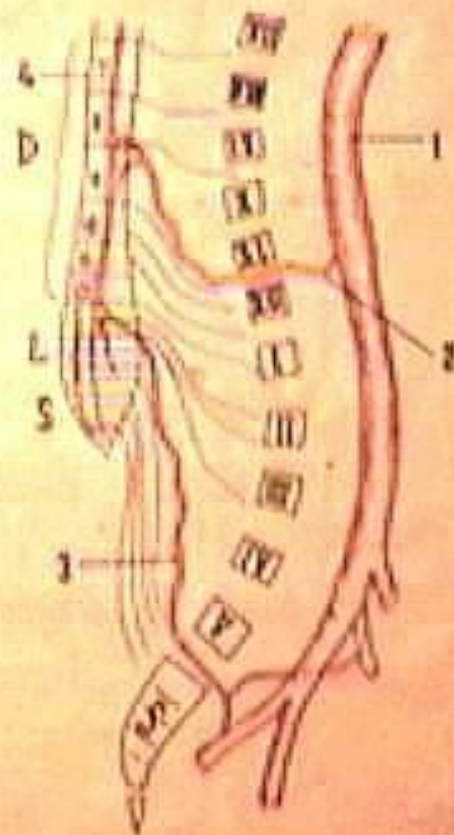








**СХЕМА КРОВосНАБЖЕНИЯ НИЖНЕЙ  
ПОЛОВИНЫ СПИННОГО МОЗГА  
(по ДелРРЖ-Готтерону и Лазорты)**



- 1 - Аорта
- 2 - Нижняя полая вена
- 3 - Венозная дуга позвоночного столба
- 4 - Позвоночная артерия