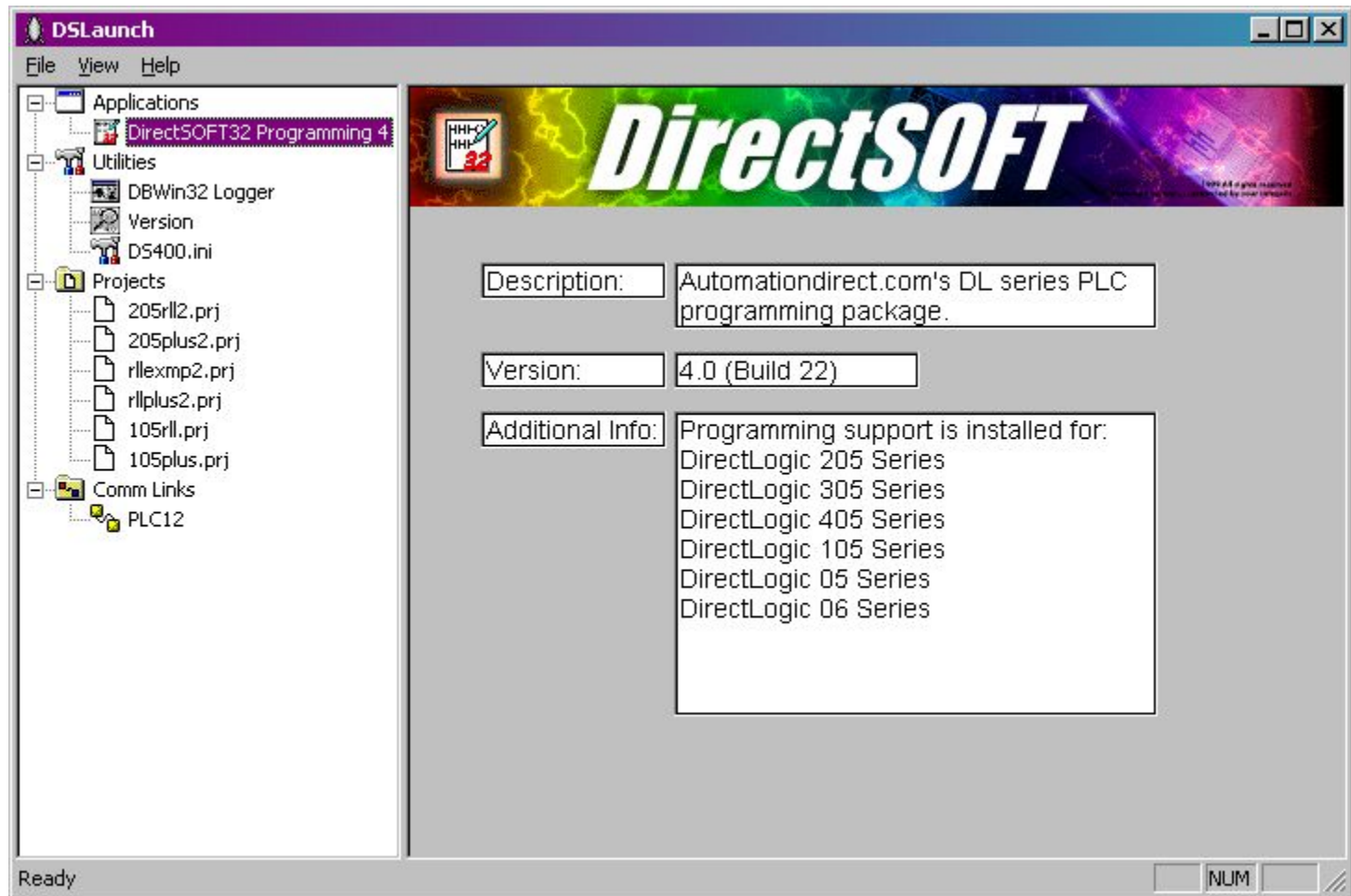


DSLlaunch и DirectSoft32



DirectLogic и Wonderware InTouch

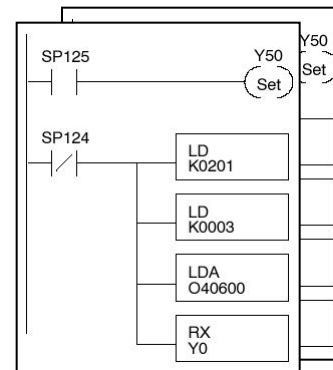
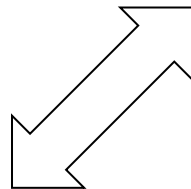
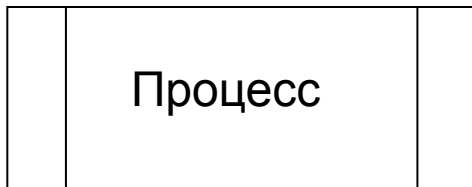
От процесса к проекту



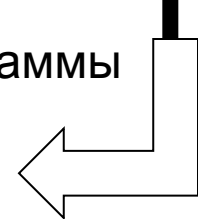
DSLaunch



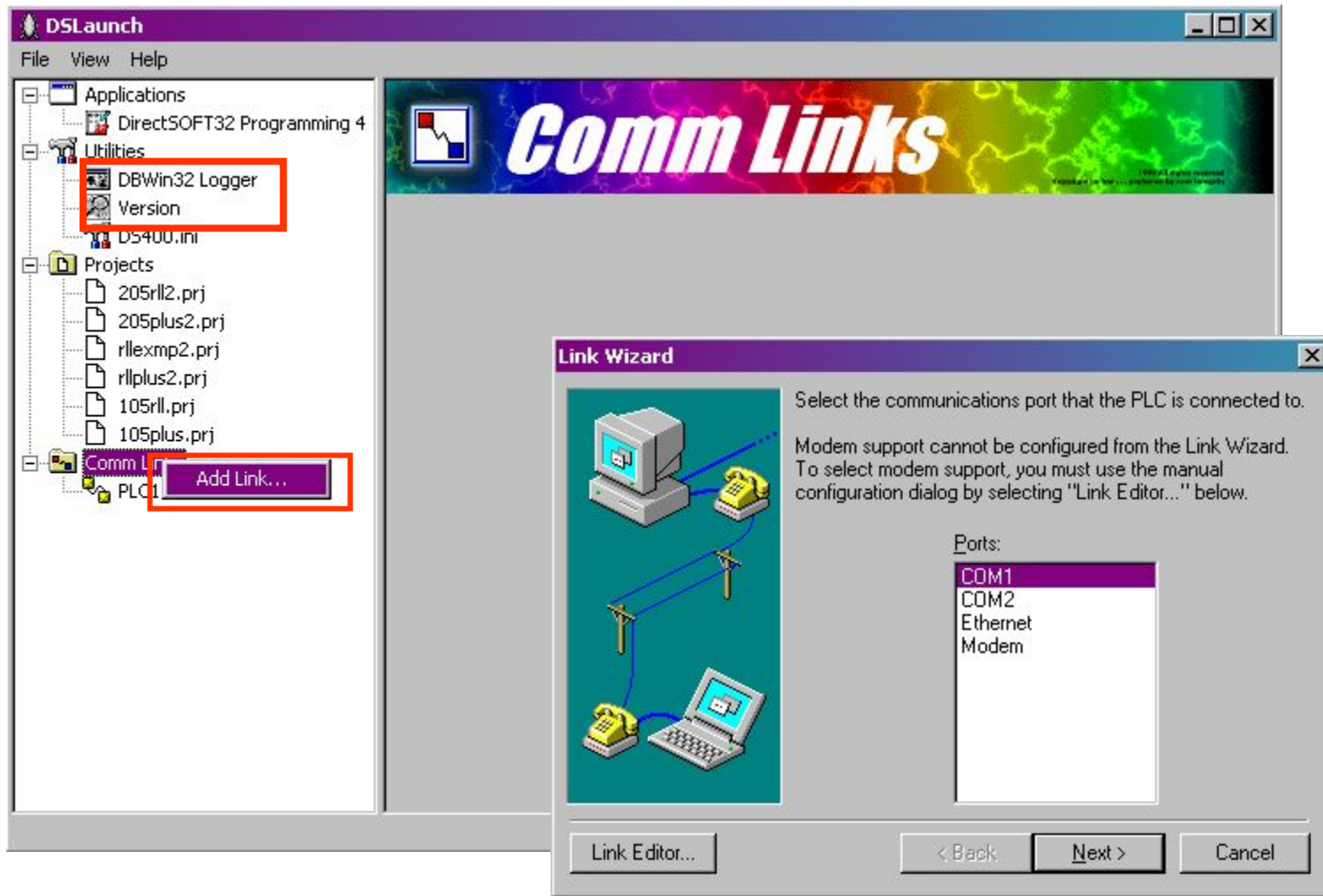
Оборудование



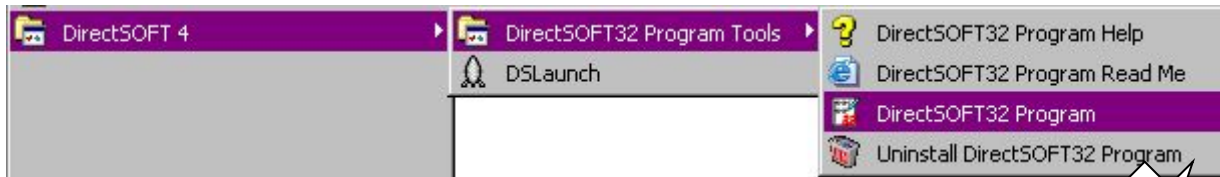
Программы



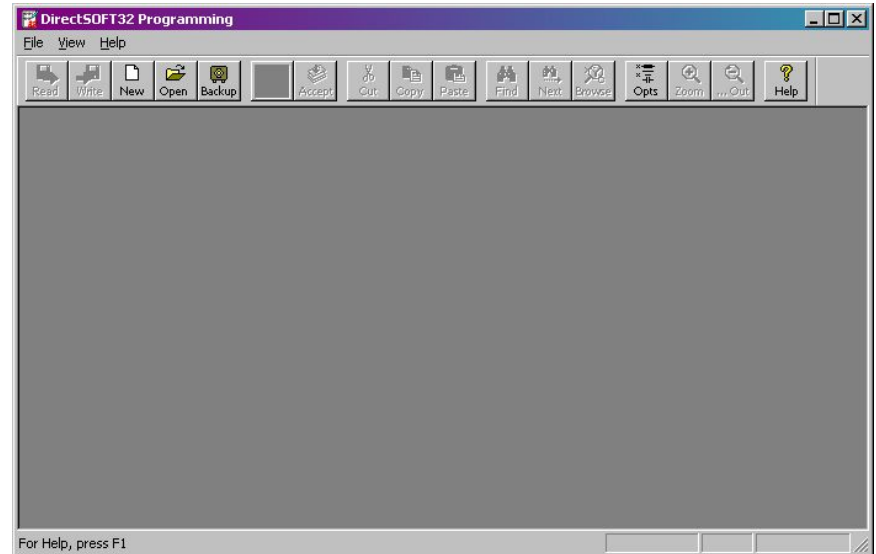
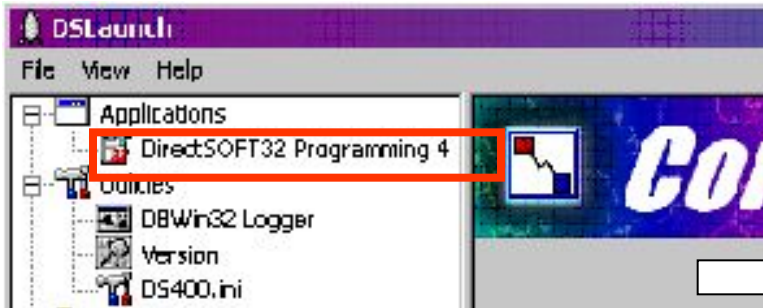
Утилиты DirectSoft32



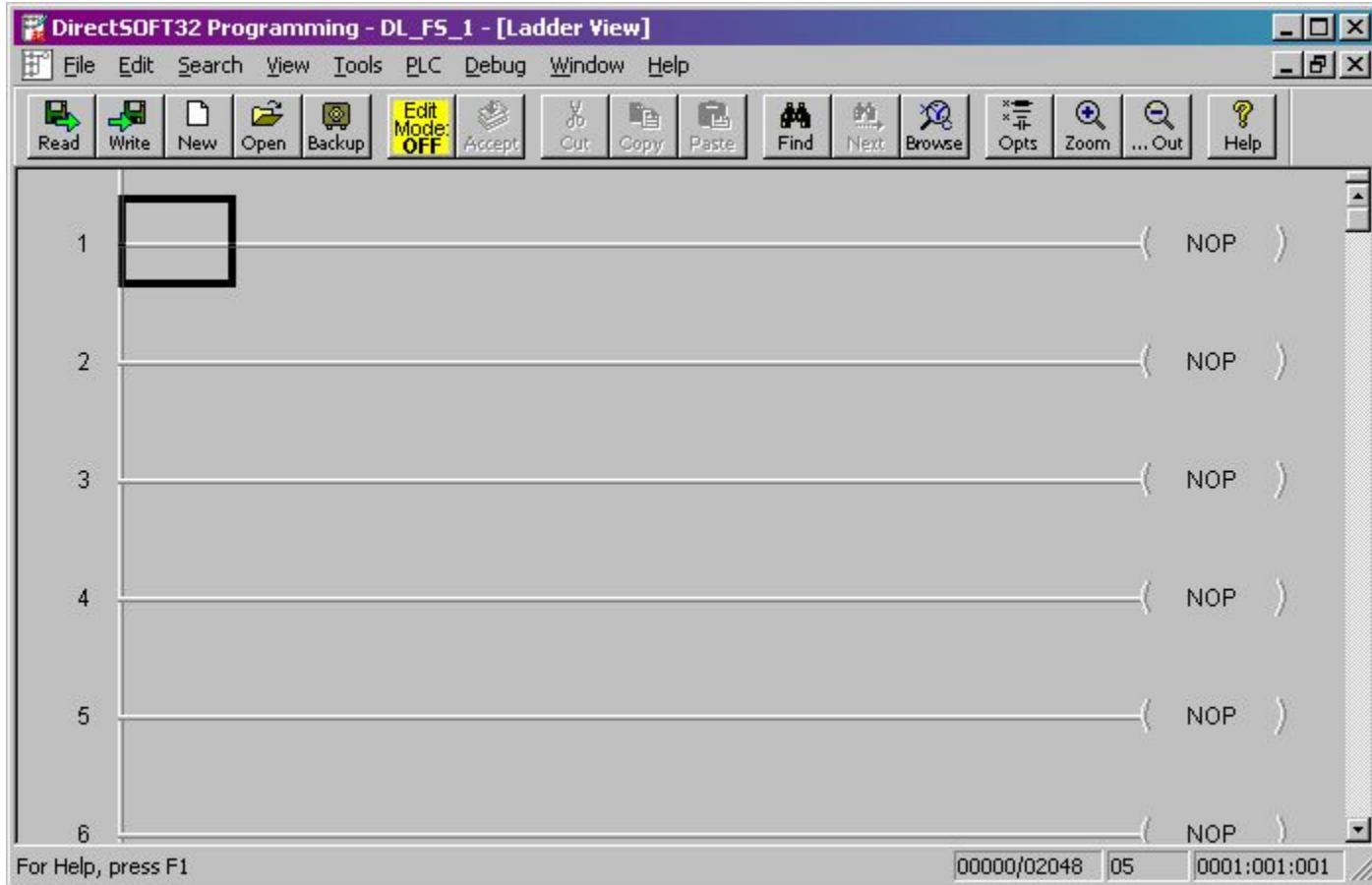
Запуск DirectSoft32 Programming



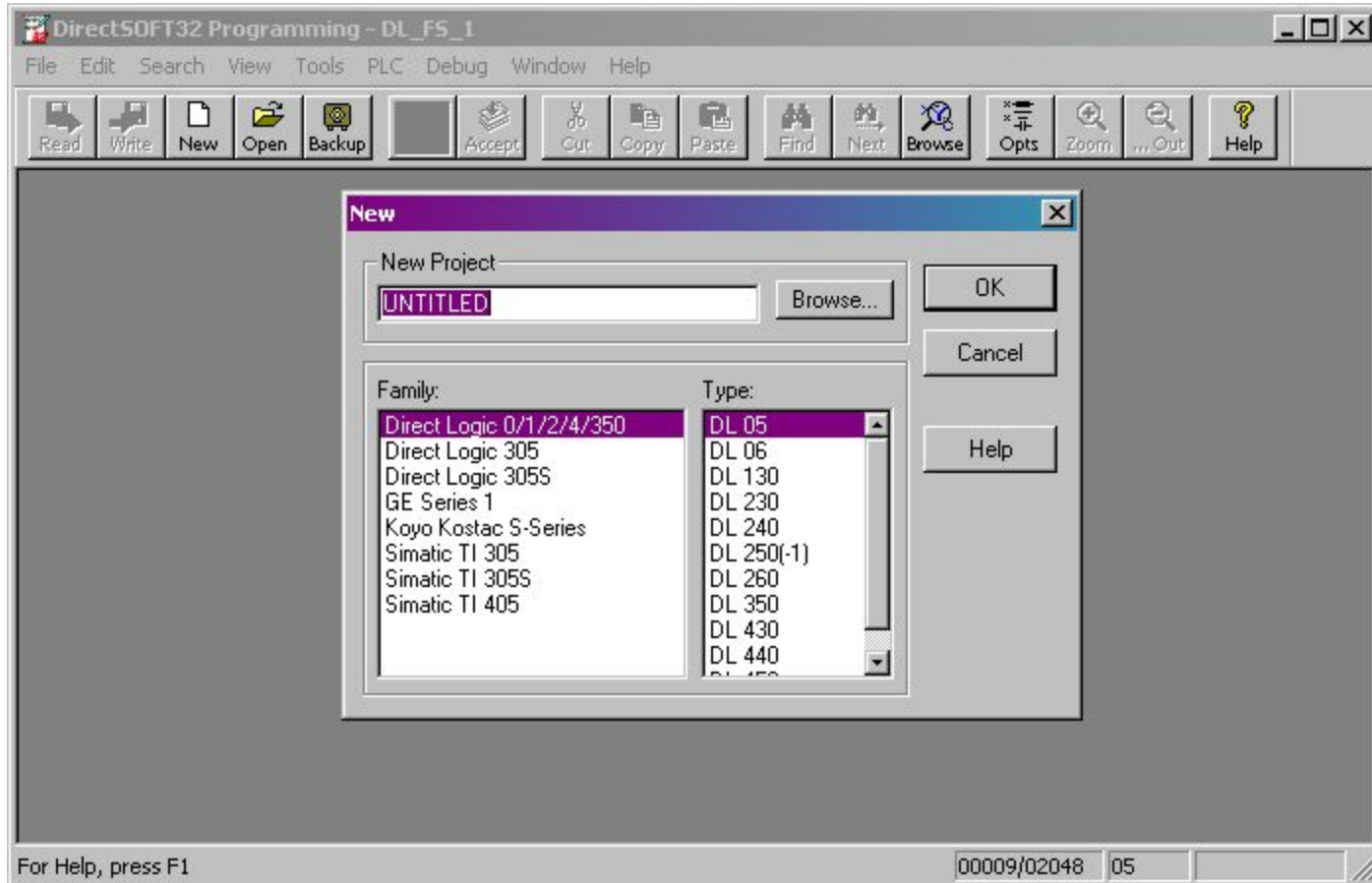
ИЛИ



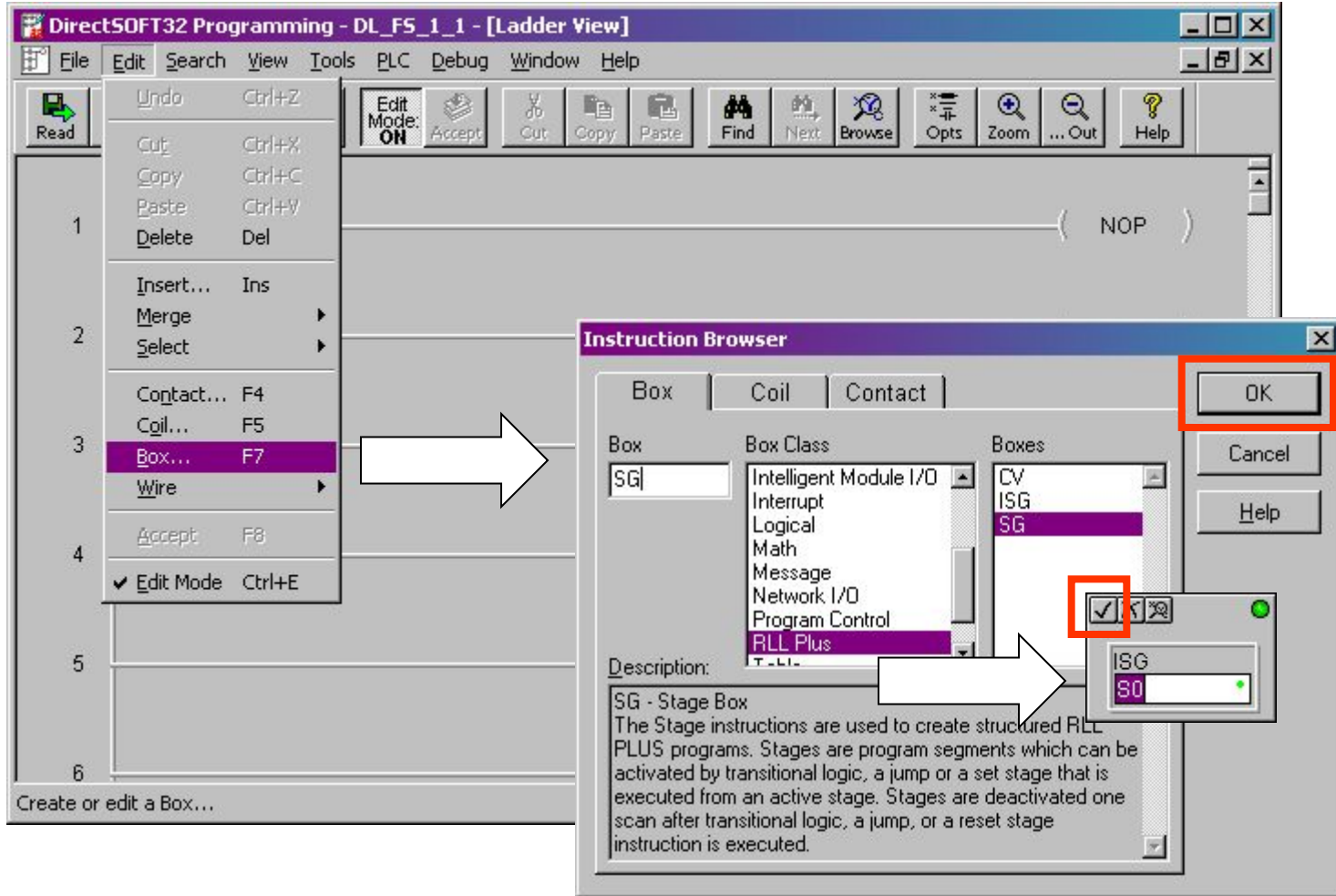
Меню и панели инструментов DS32P



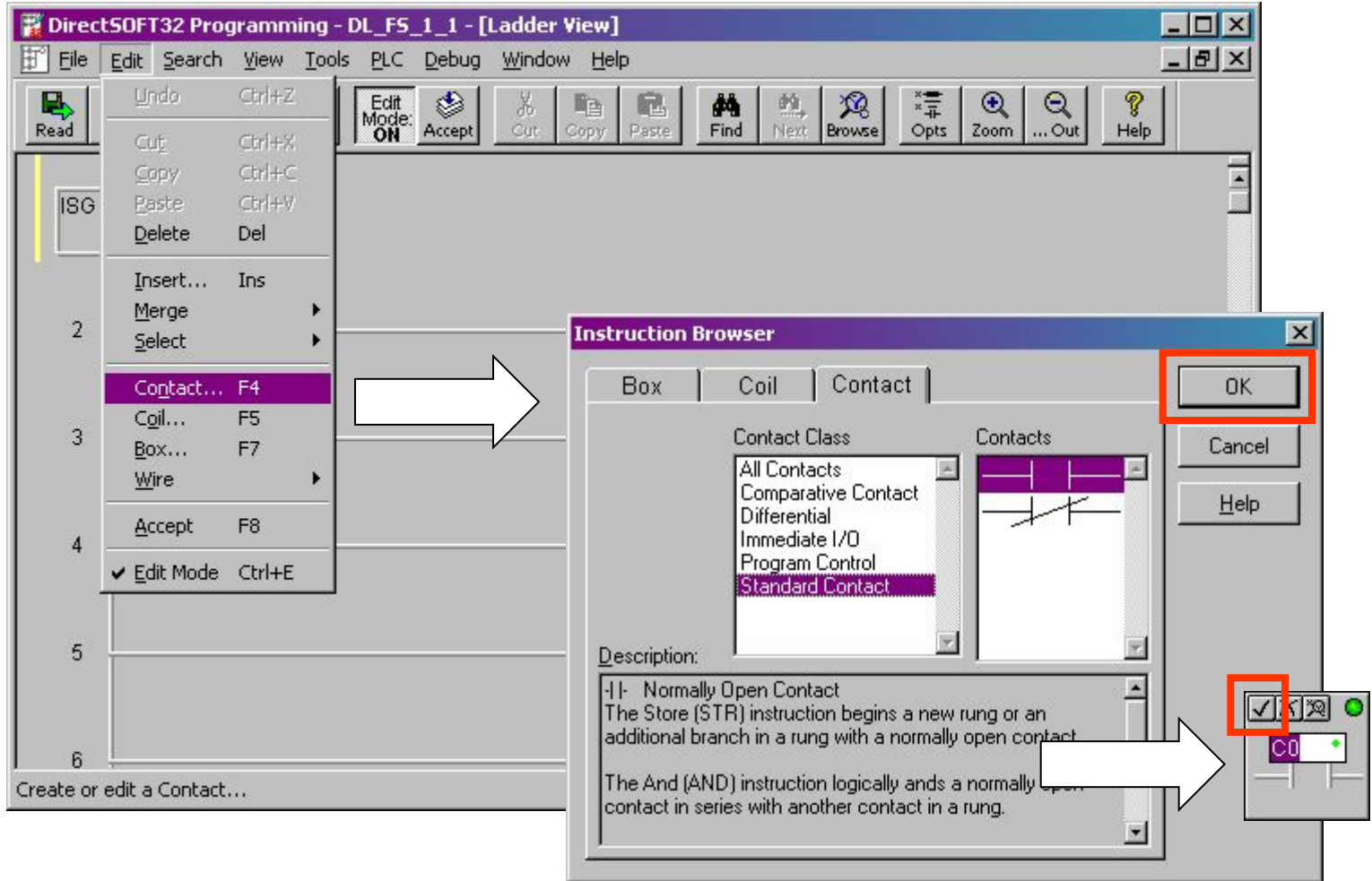
Создание проекта



Вставка стадии в RLL+ программу



Вставка блока



Система помощи DirectSoft32 Programming

