

A dense forest of evergreen trees, likely spruce or fir, with a wooden boardwalk leading through the center. The trees are dark green, and the boardwalk is made of light-colored wooden planks. The scene is captured from a low angle, looking down the boardwalk.

European mink

Prepared by Pankova Irina
BIOLOGY, 5902



1

The European mink is a predatory animal of the marten family

2

In many habitats, it has long been considered an extinct animal



They're so cute



3

The mink is listed in the Red book as an endangered species

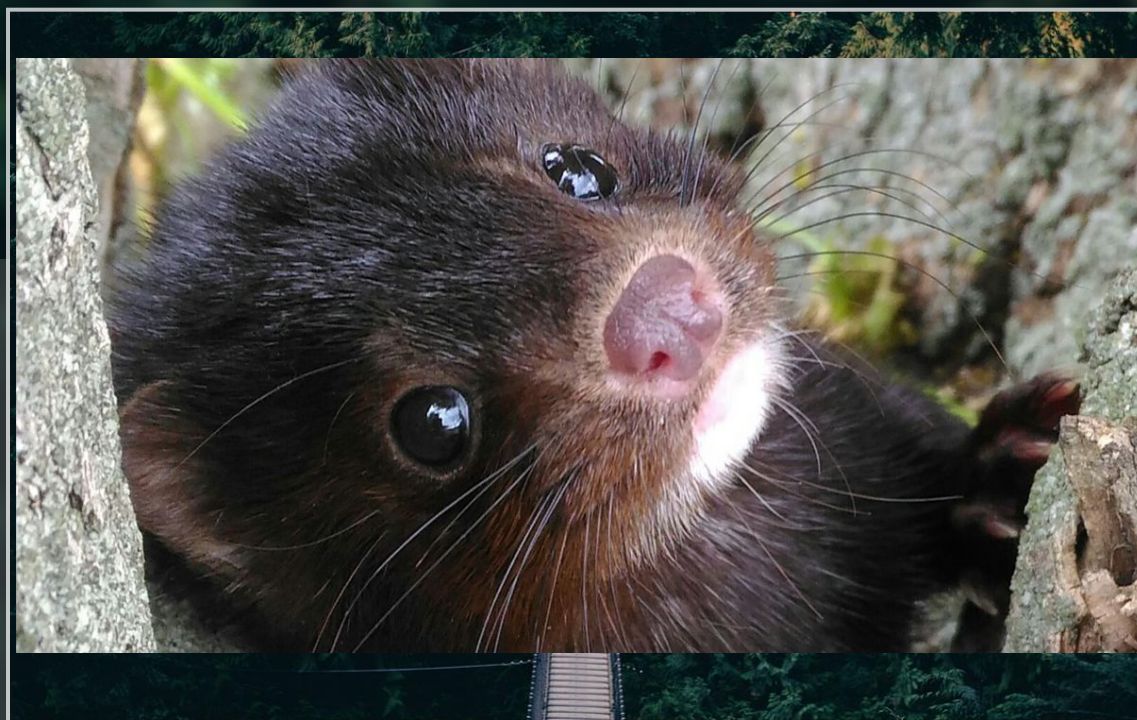


The European mink is a fairly small animal

4

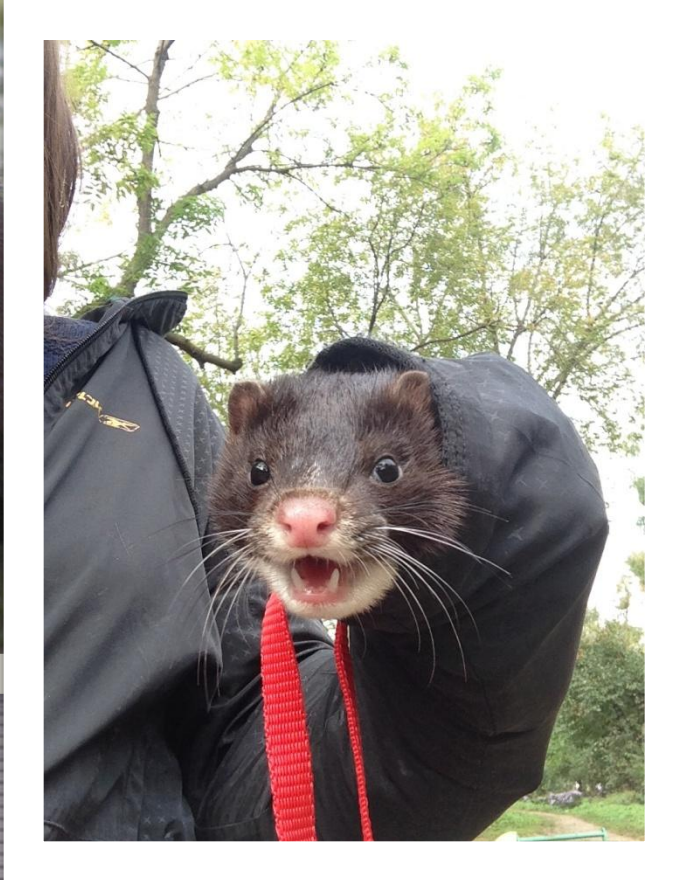
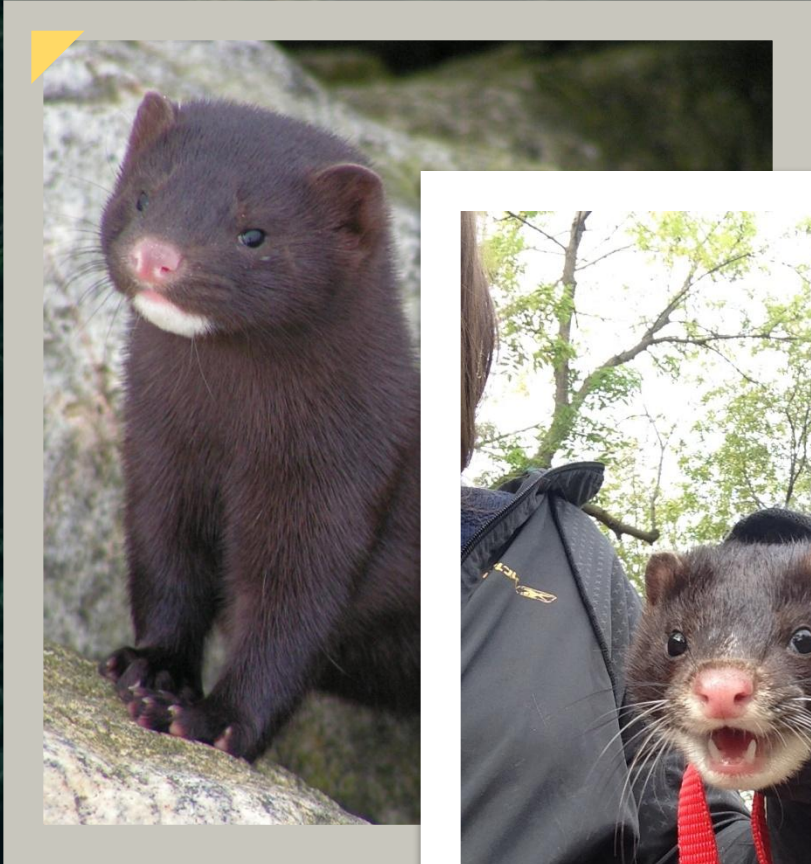
5 The body is elongated, the limbs are short

6 The tail is not fluffy with a length of 10-15 cm



7 Mink fur is especially valuable

8 The range covers forest, less often forest-steppe natural zones.



9

Minks are nocturnal predators that are most comfortable at dusk

10

Minks are carnivores, which means they eat meat. Mice, rabbits, fish, crayfish, snakes, frogs, and waterfowl are part of their diet

11

Chickens, ducklings, and other small domestic animals are sometimes hunted near the settlements



12

During the period of famine, they can eat waste

13

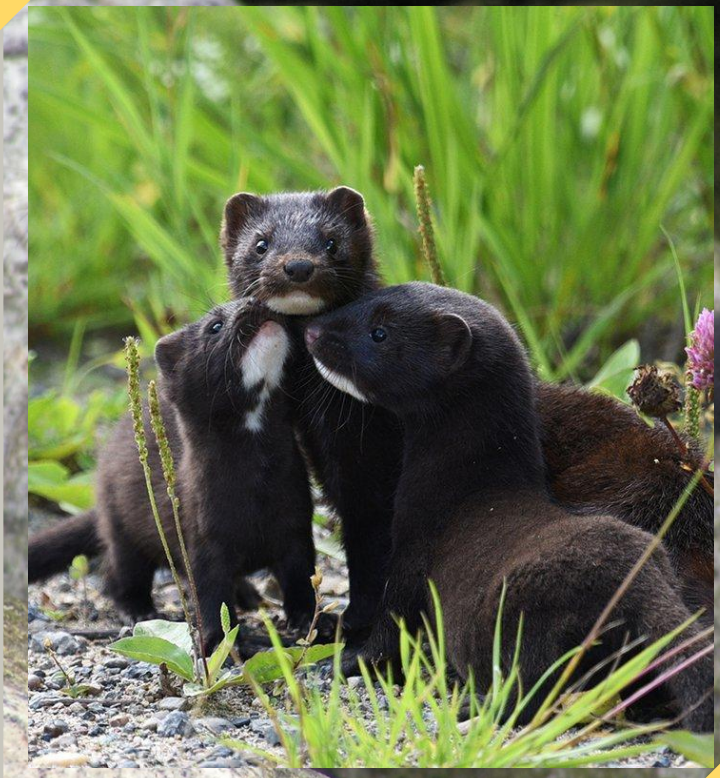
European Minks are solitary

14

They do not get together in groups, they live separately from each other.

15

Settle in the valleys and banks of deep forest rivers, banks of streams, lakes, ponds, swamps, floodplain thickets of shrubs and reeds. The species is listed in the Red book of the Ryazan region with the status "Endangered".





Thanks

For Your Watching

