

**Топографическая
анатомия
брюшной
полости,
операции на
печени и
желчных путях**



Выполнили Макашова Е.,
Евдокимова Е.
Руководитель Светашов В.С.,
К.м.н., ассистент кафедры

**Всегда вперед, после каждого
совершенного шага готовиться к
следующему, все помыслы
отдавать тому, что еще предстоит
сделать.**

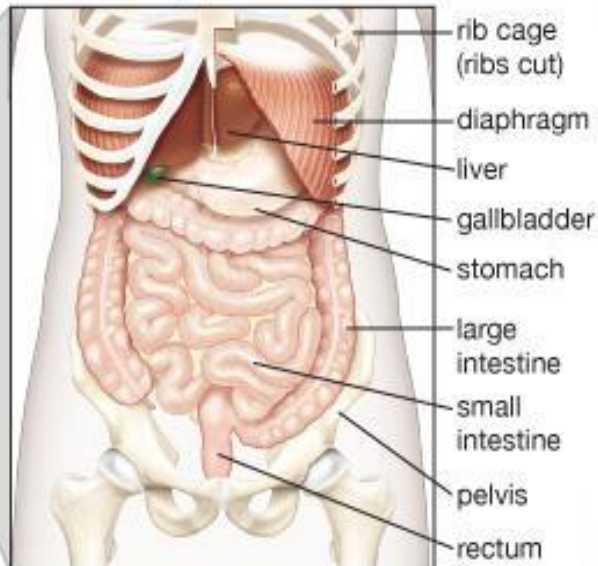
Н. Н. Бурденко

ТОПОГРАФИЧЕСКАЯ АНАТОМИЯ.

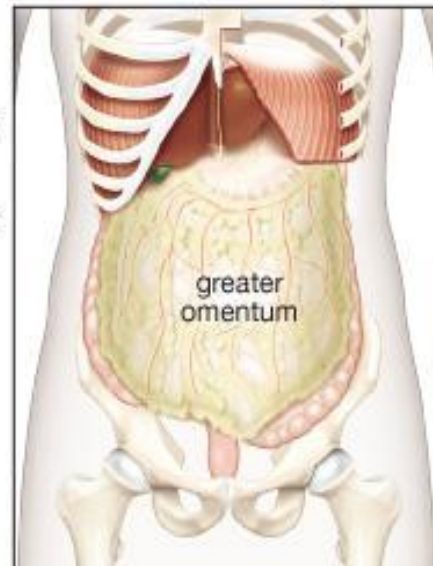
Верхний этаж брюшины

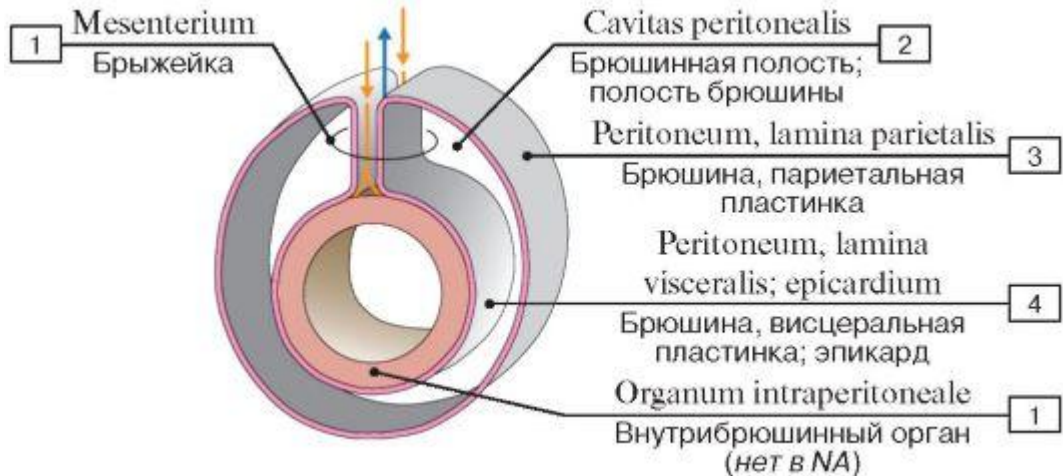
ОБЩИЙ ОБЗОР ОРГАНОВ БРЮШНОЙ ПОЛОСТИ

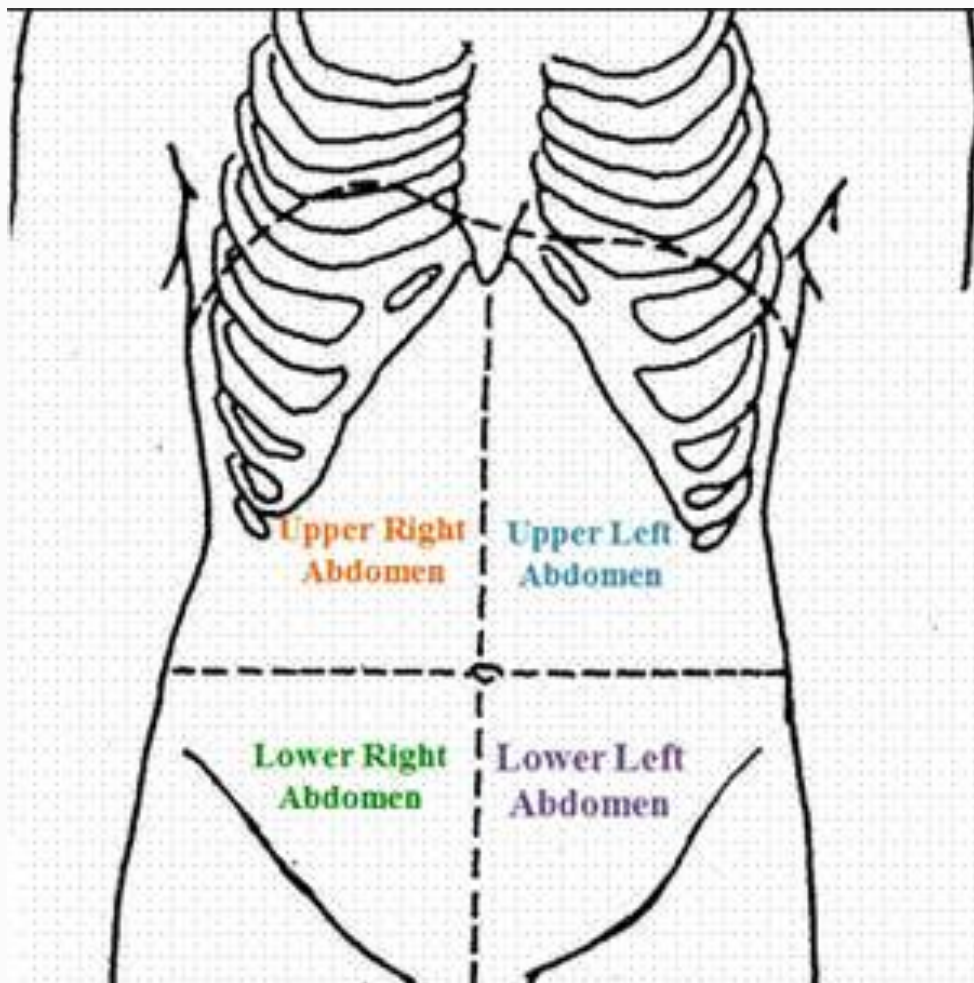
Abdominal organs in situ

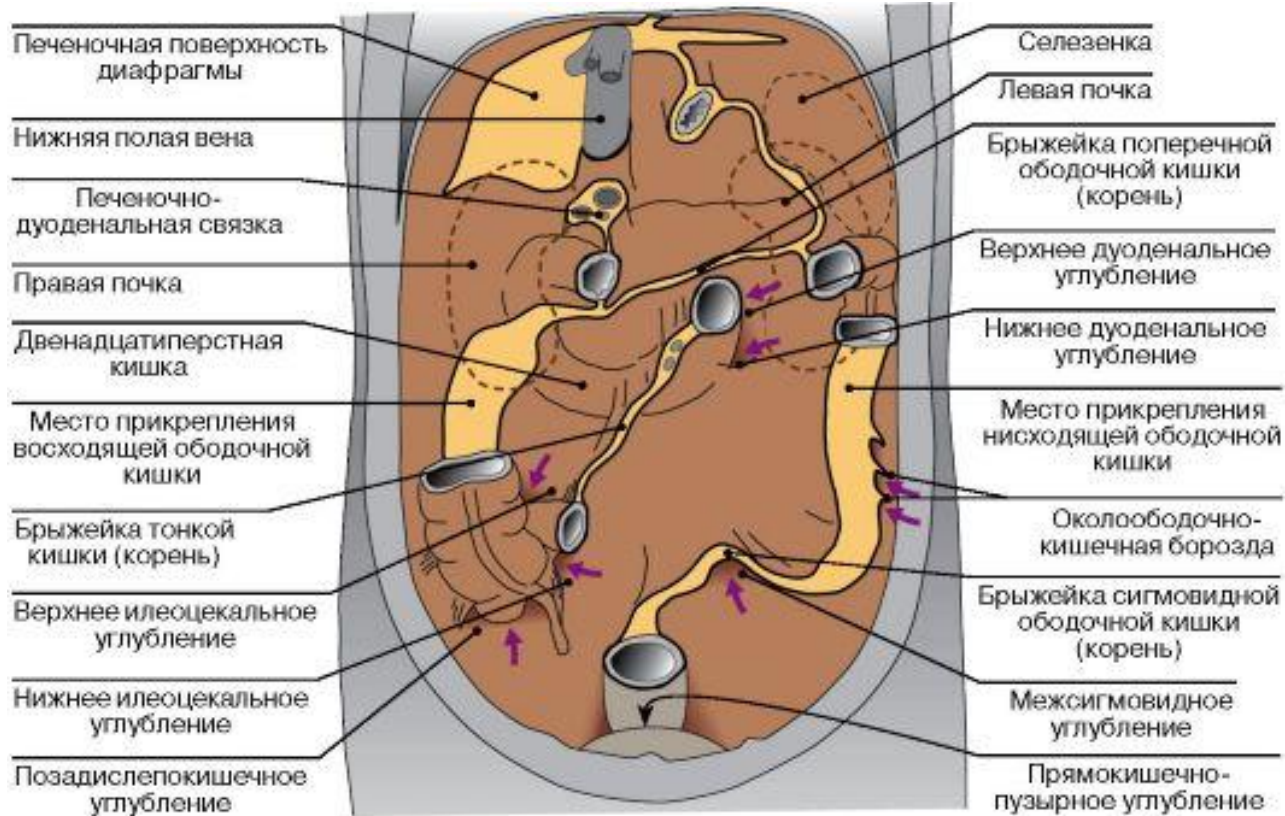


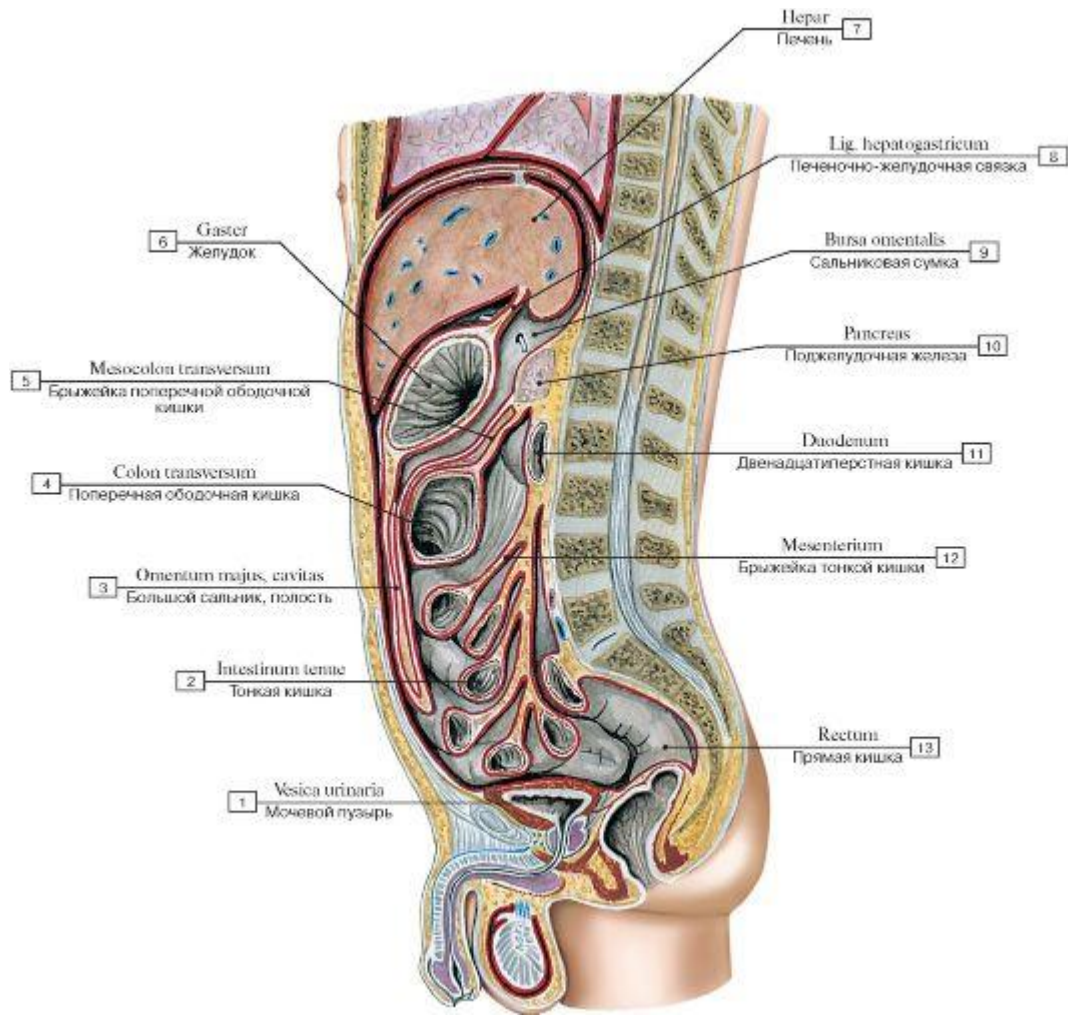
Abdominal organs with greater omentum

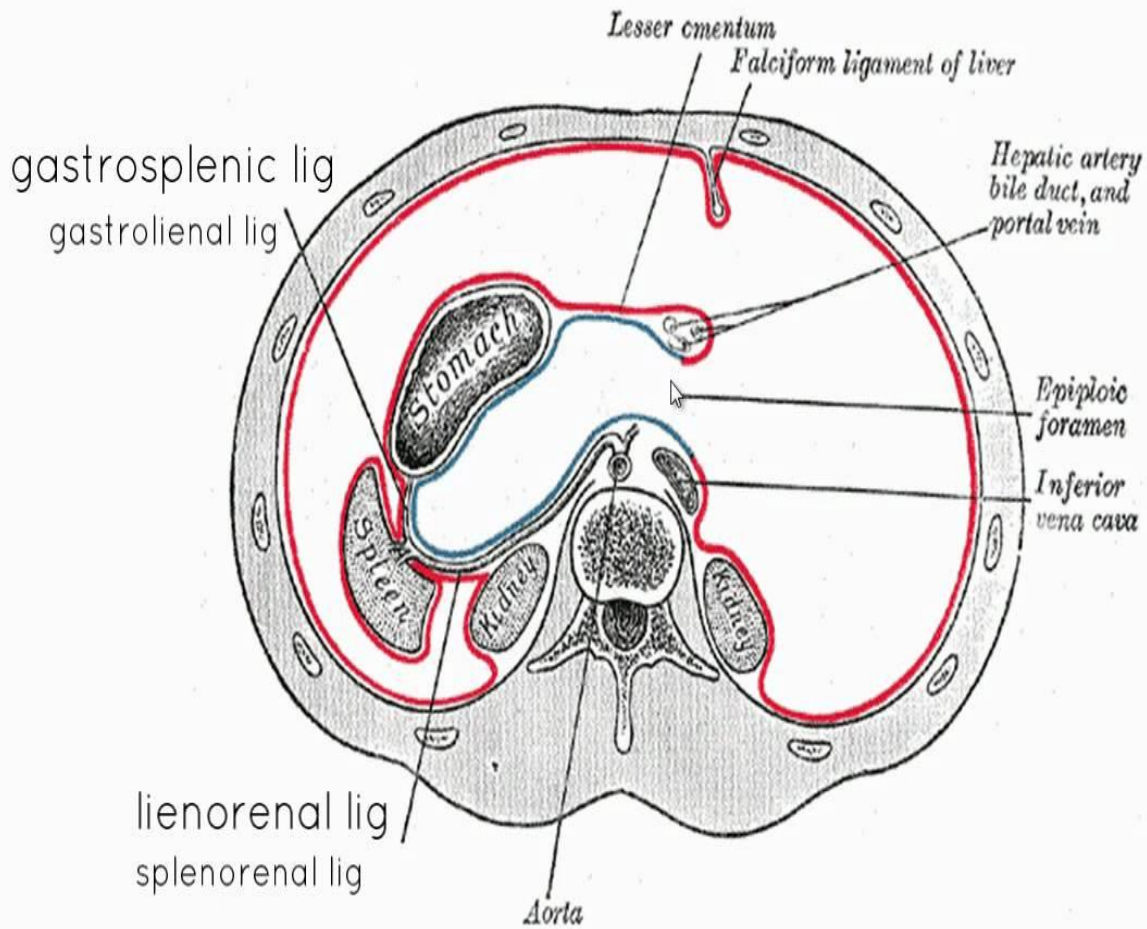


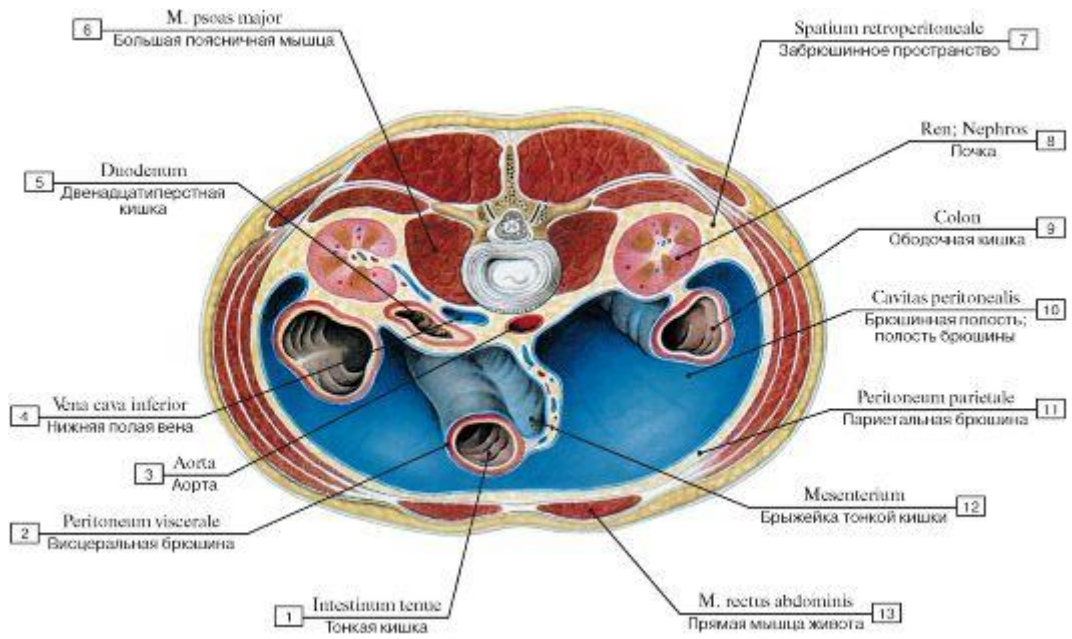


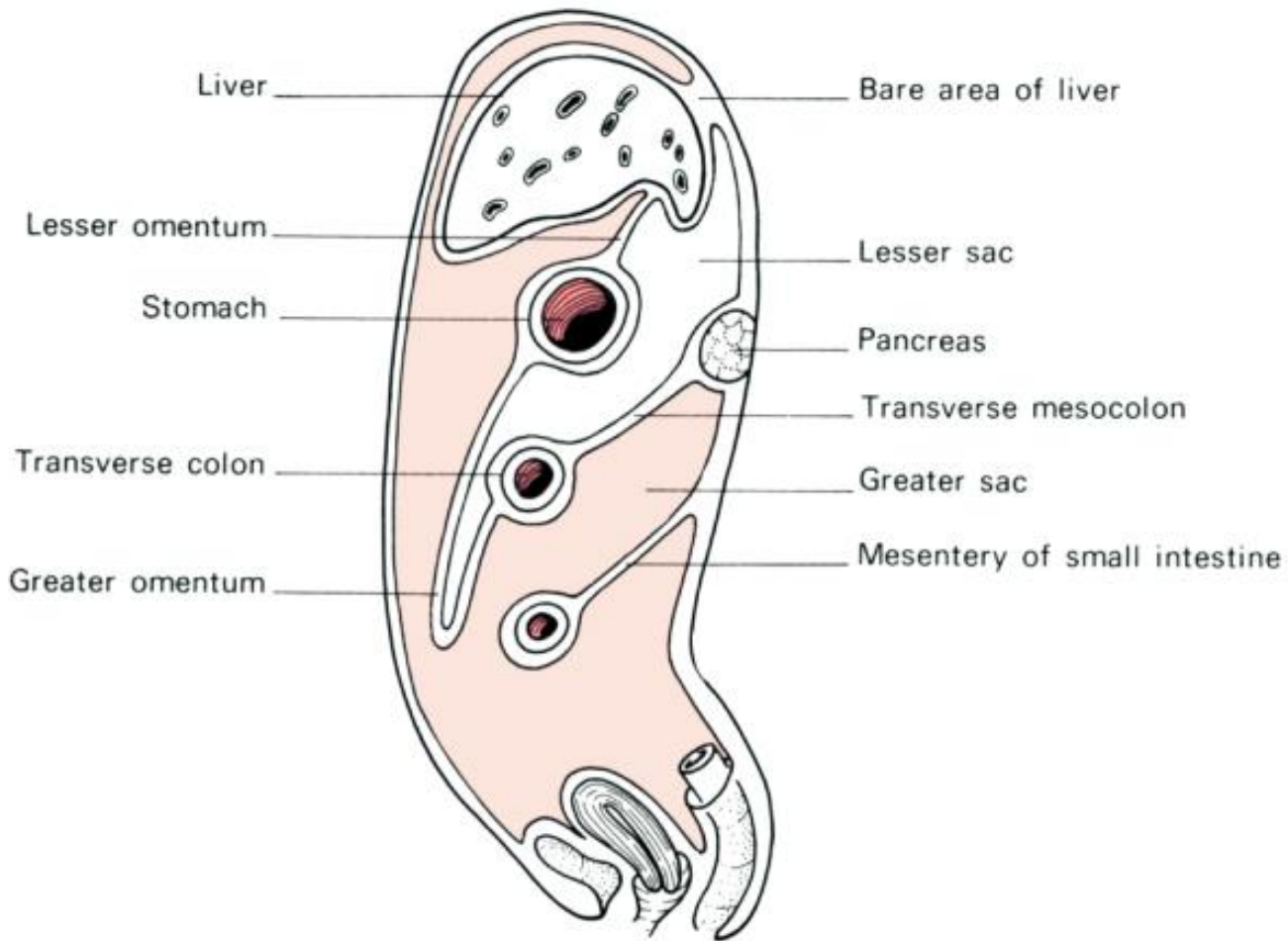






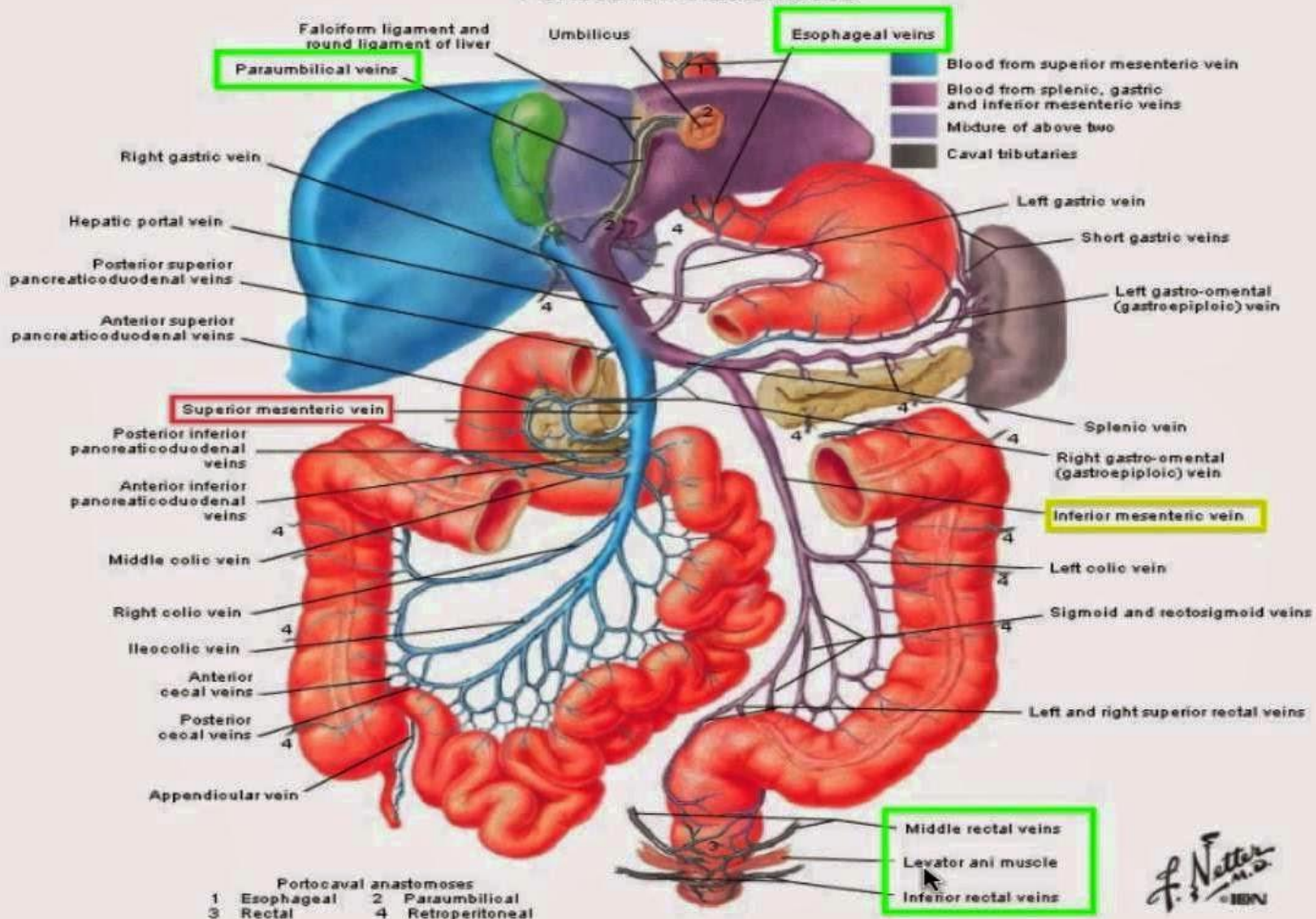




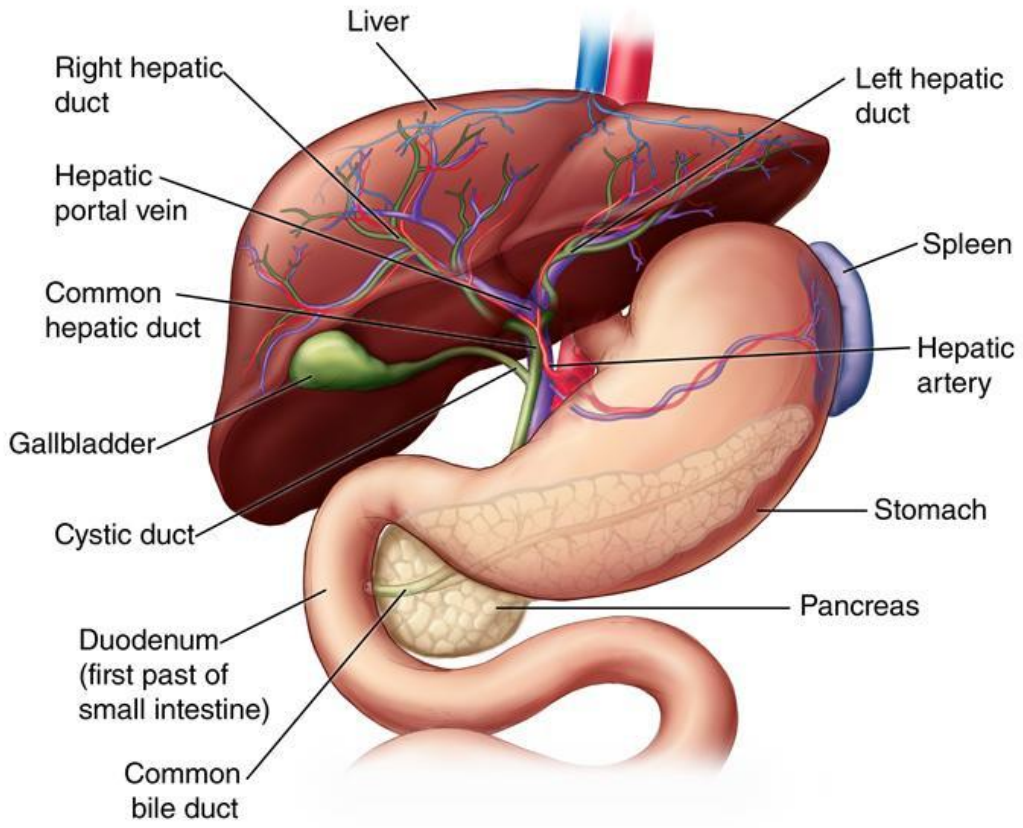


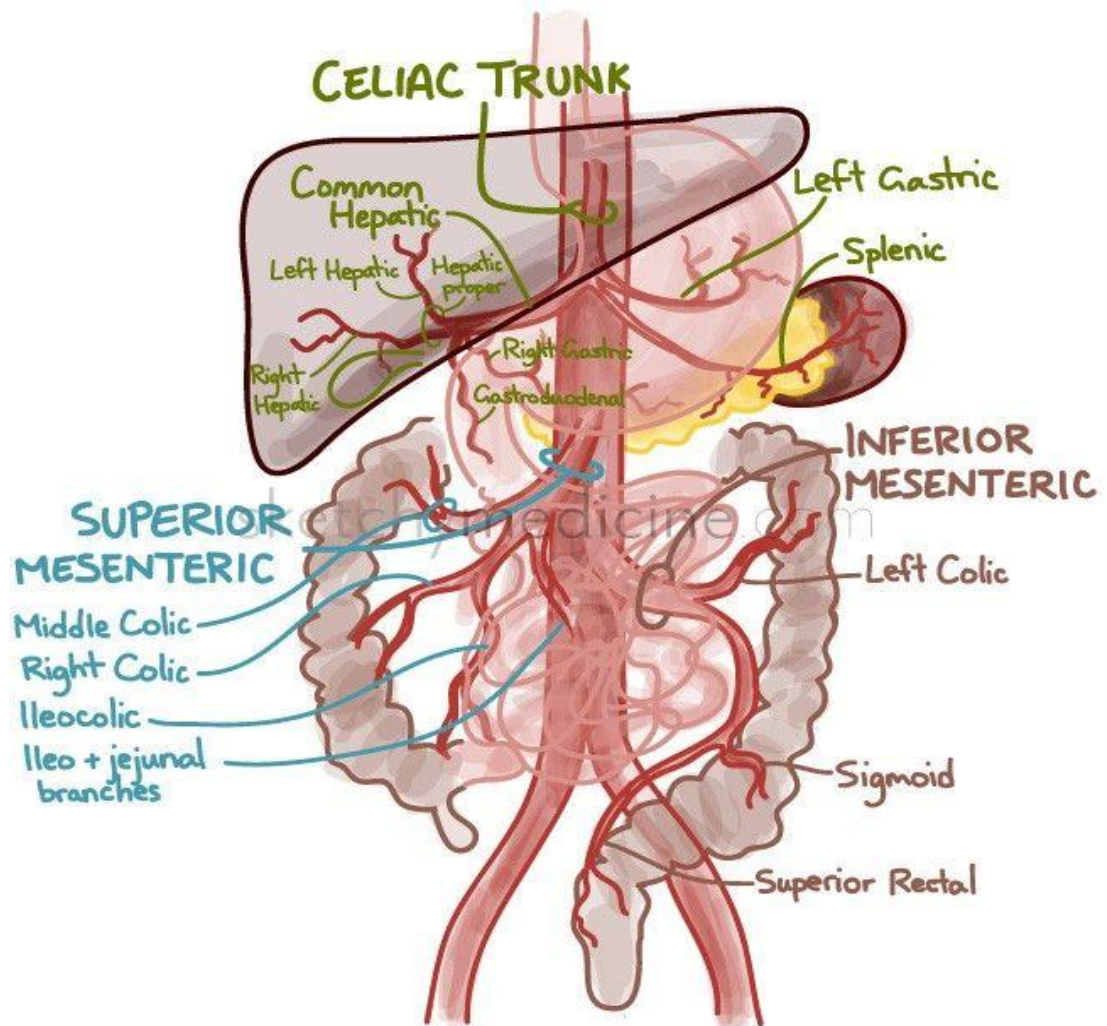
Hepatic Vein Tributaries

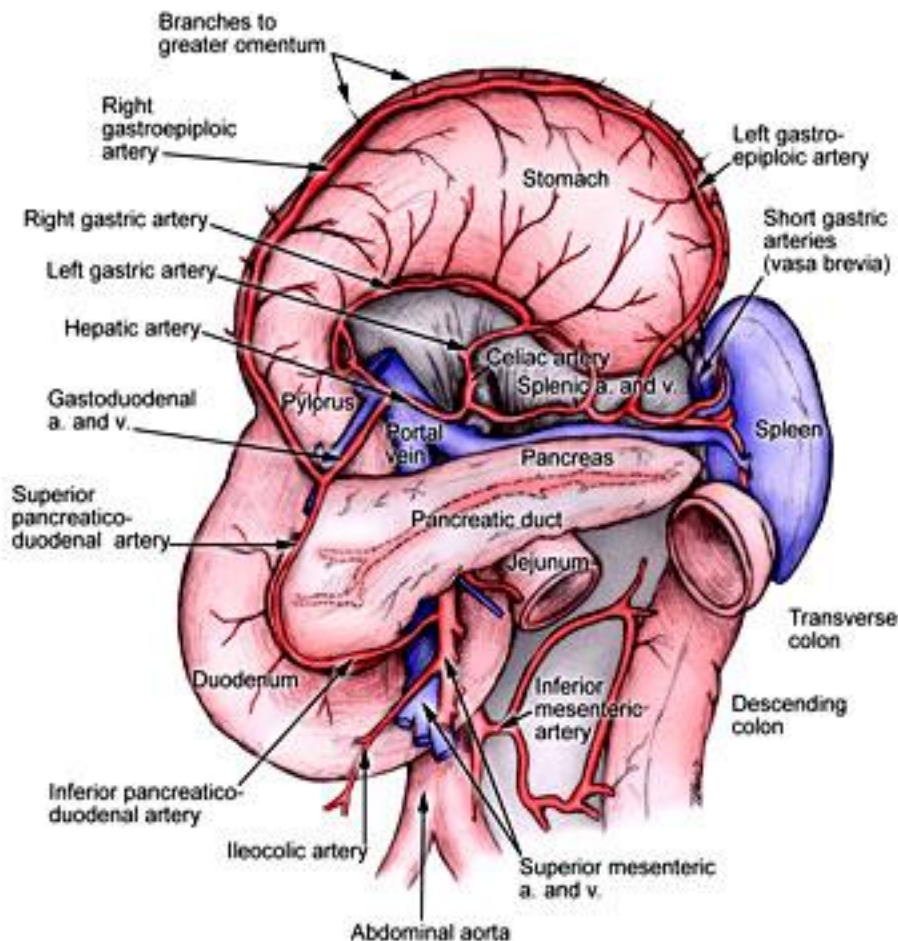
Portocaval Anastomoses

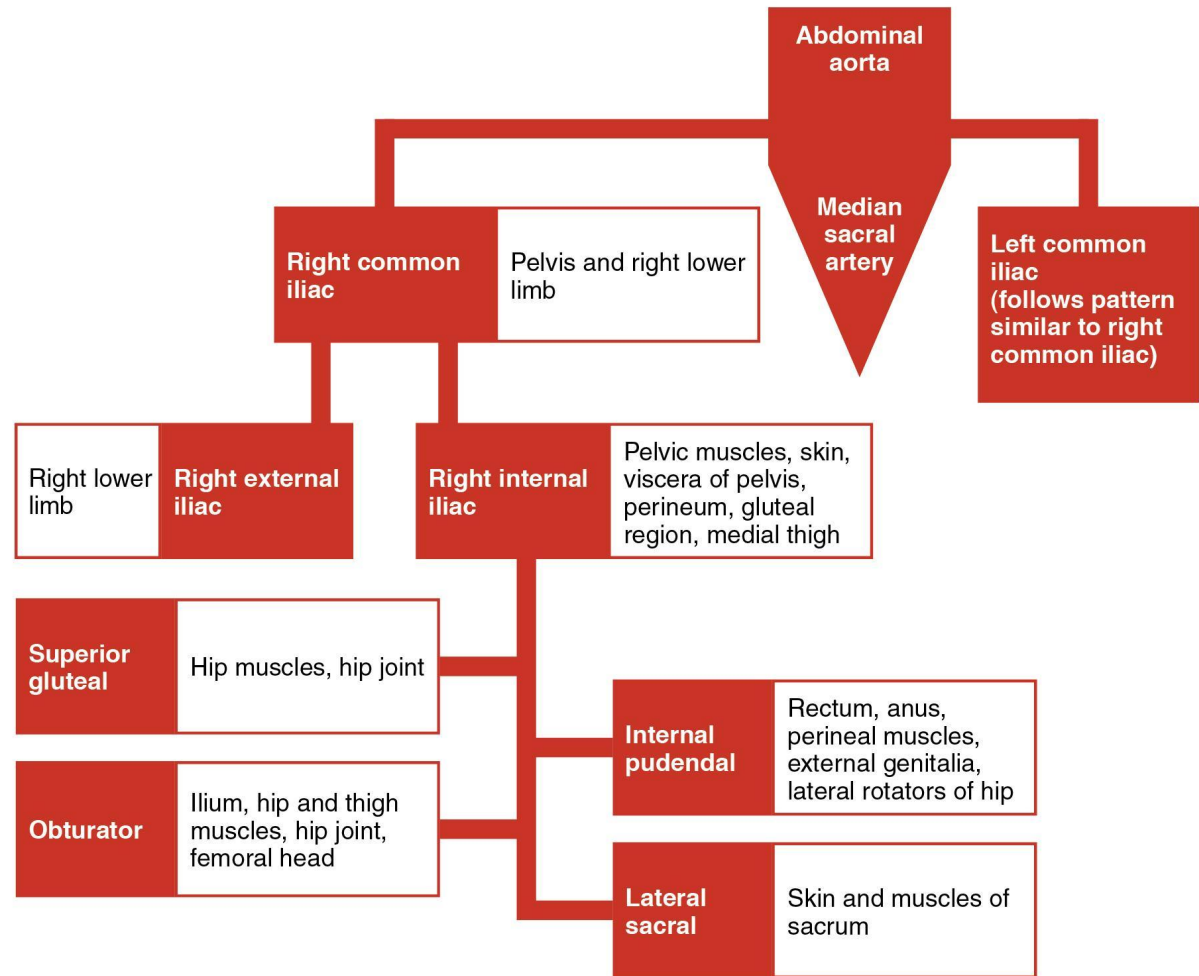


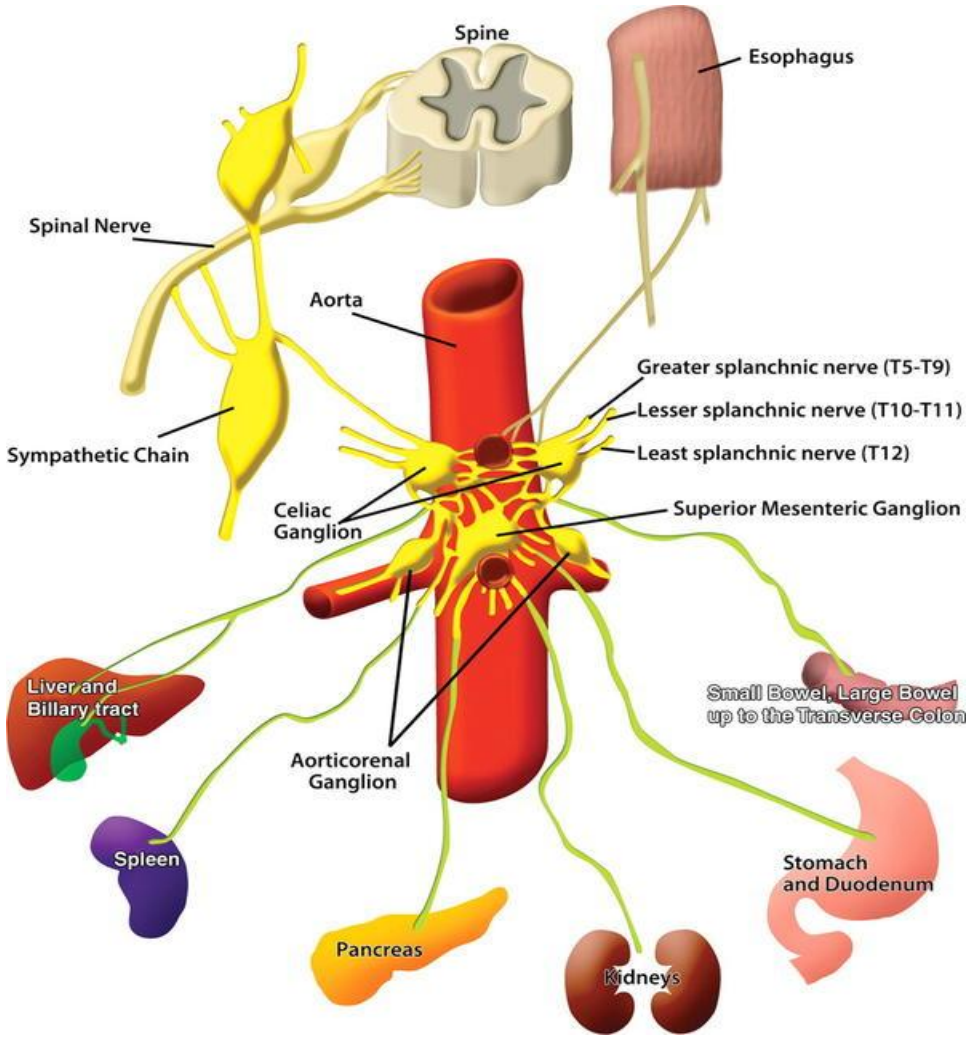
F. Netter M.D.
© IBN

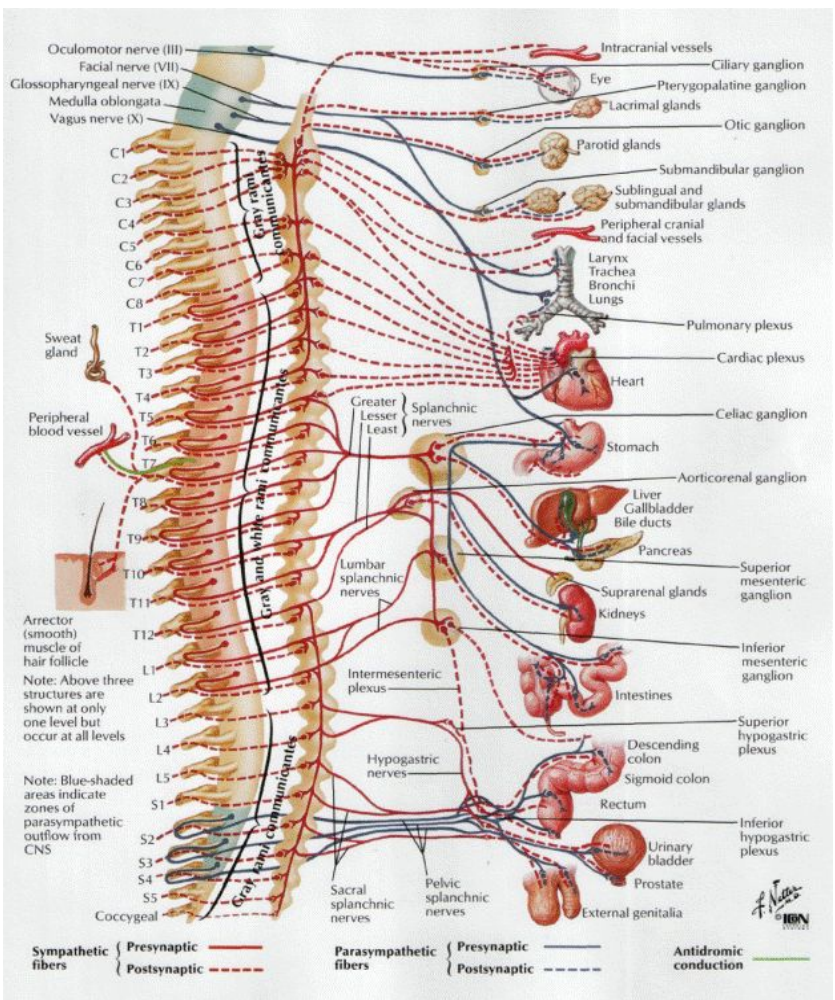




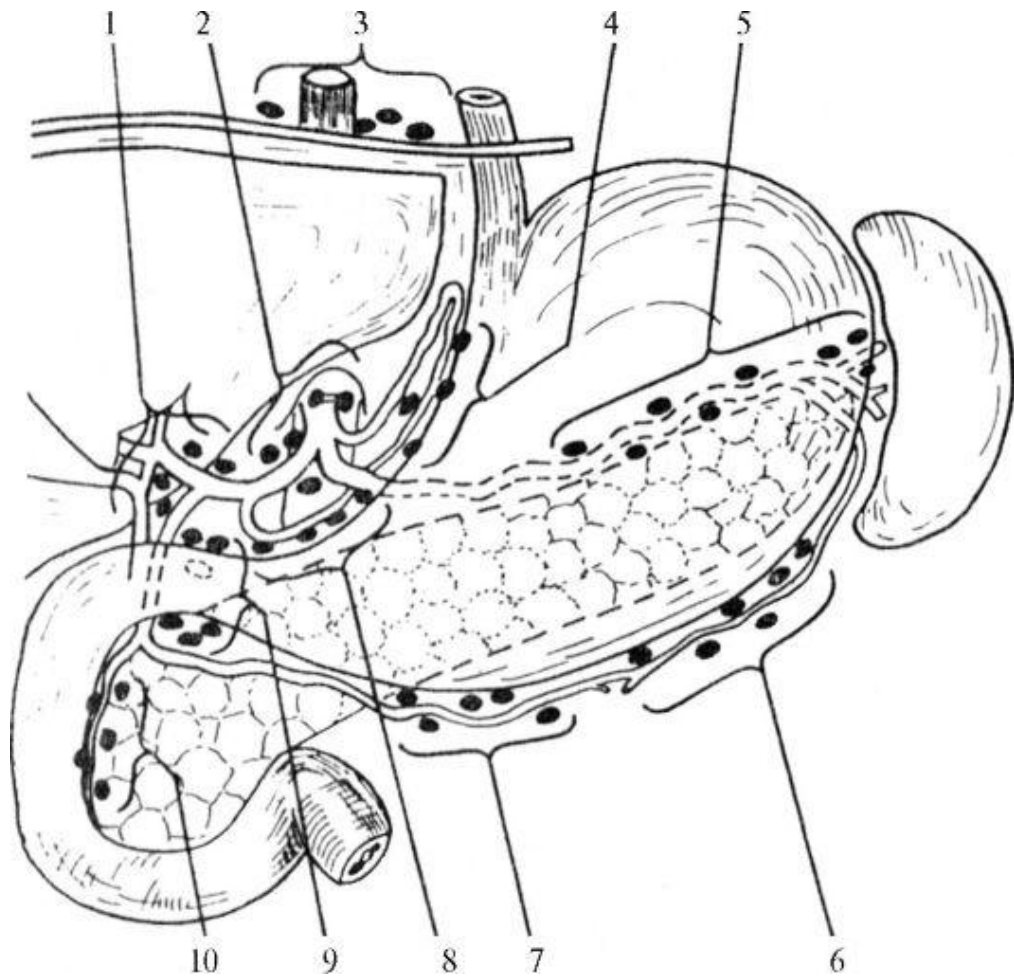


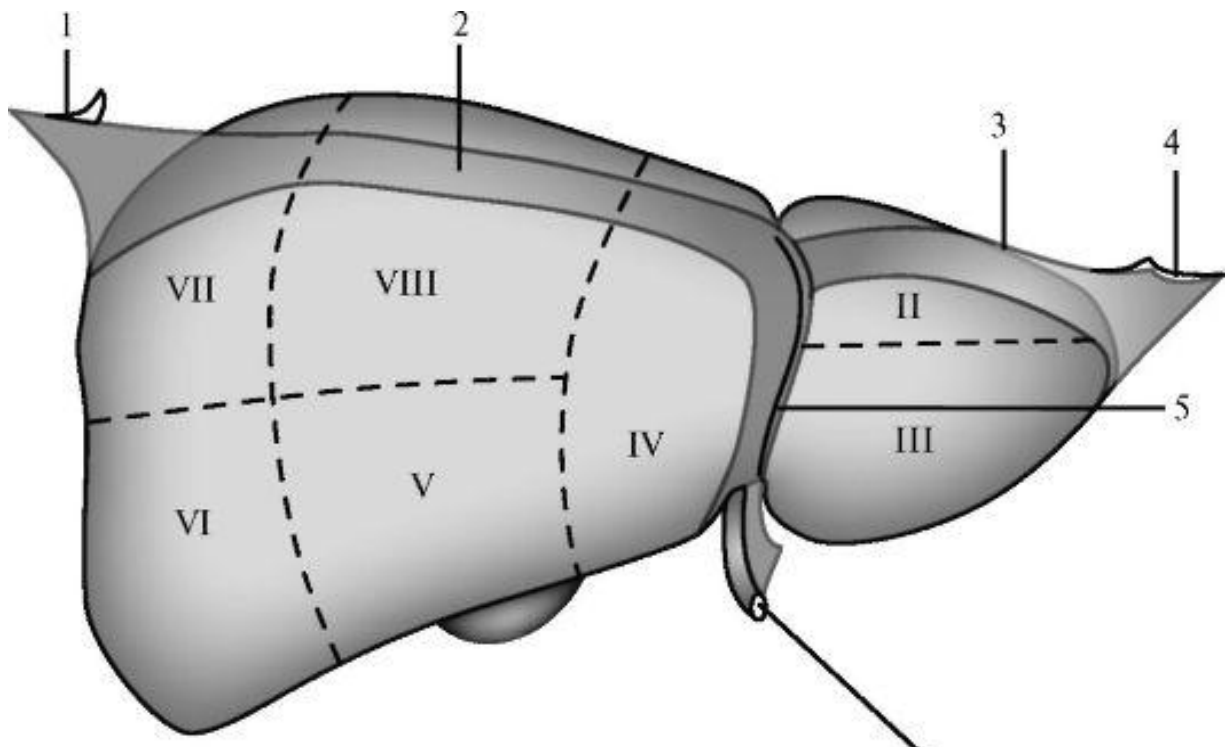


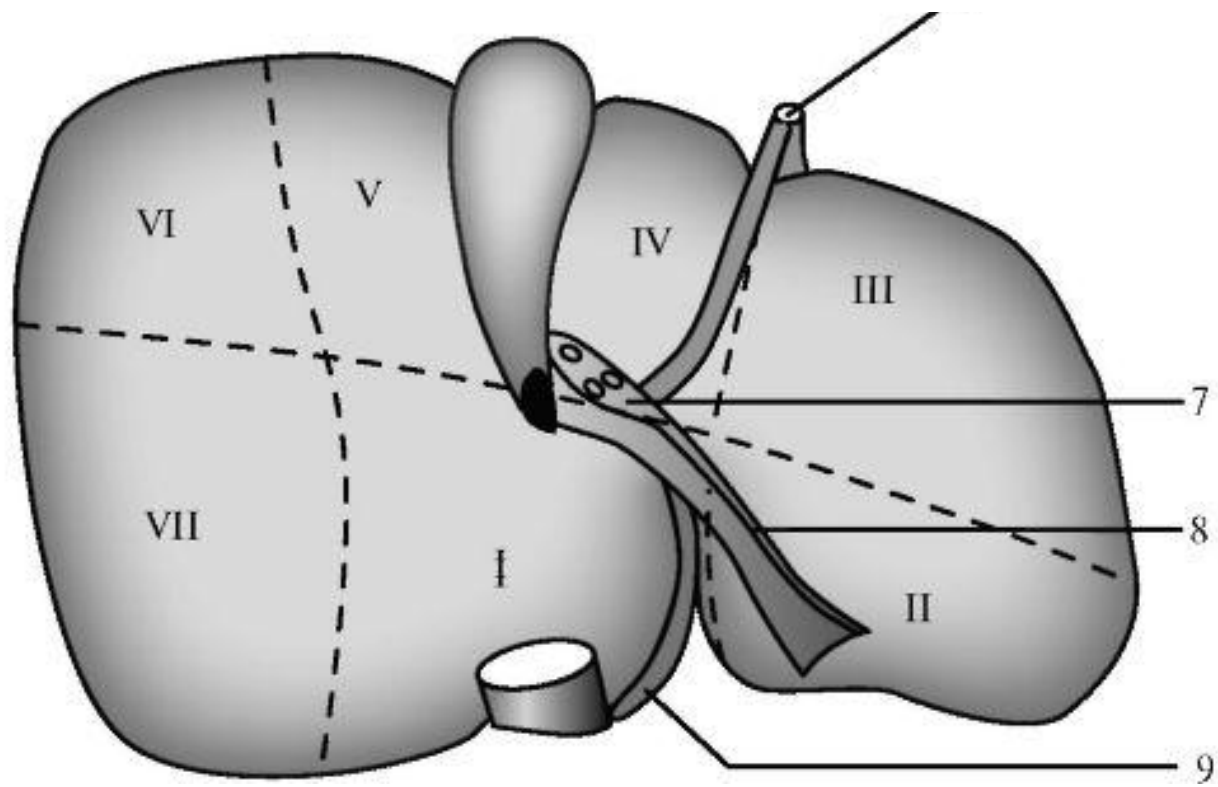


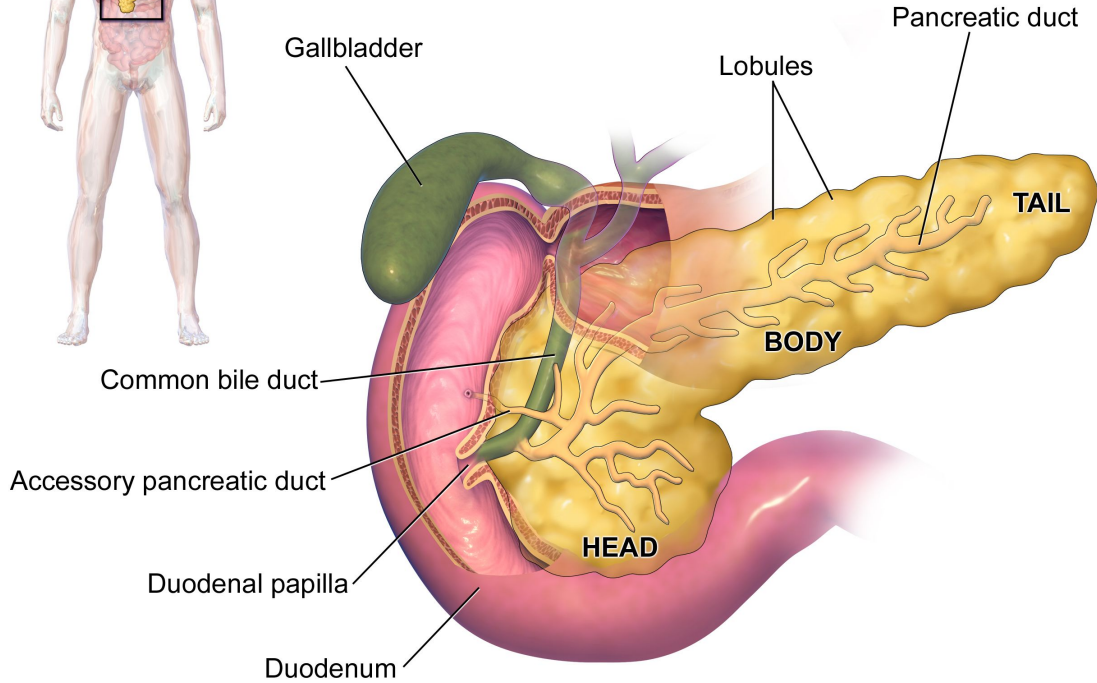
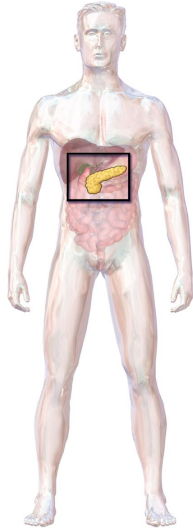


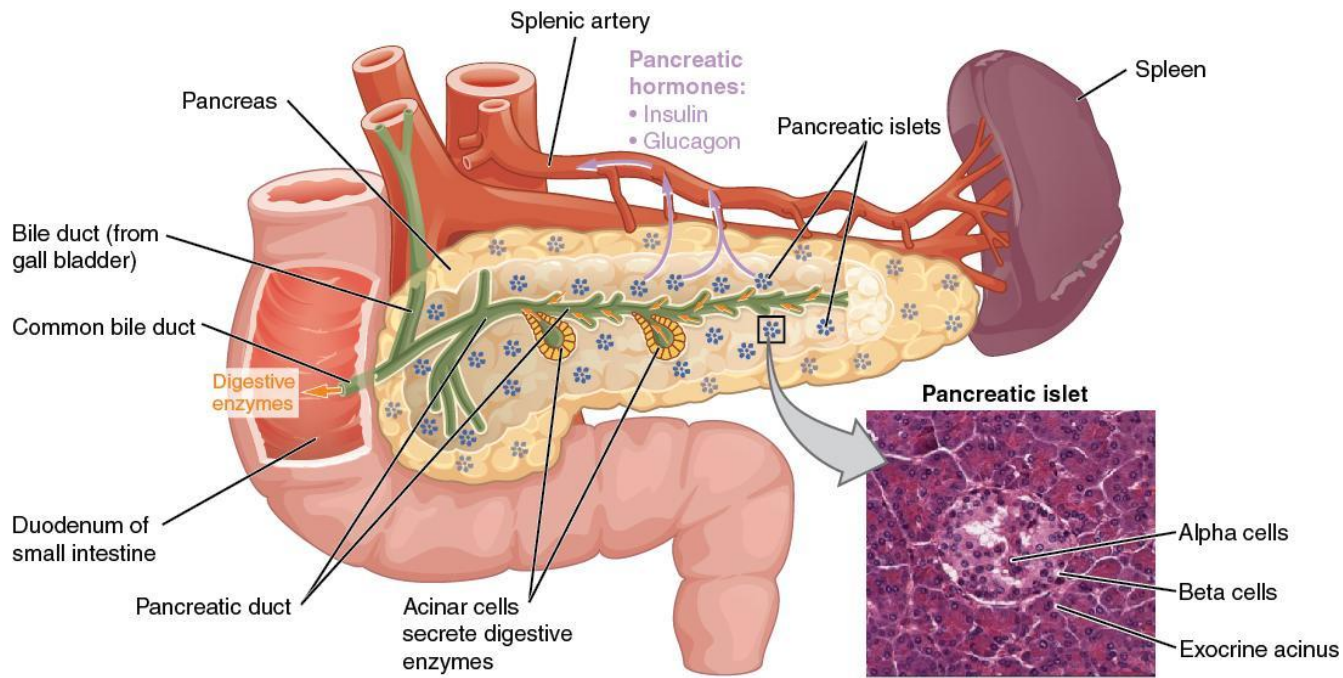
F. Netter
© H&M

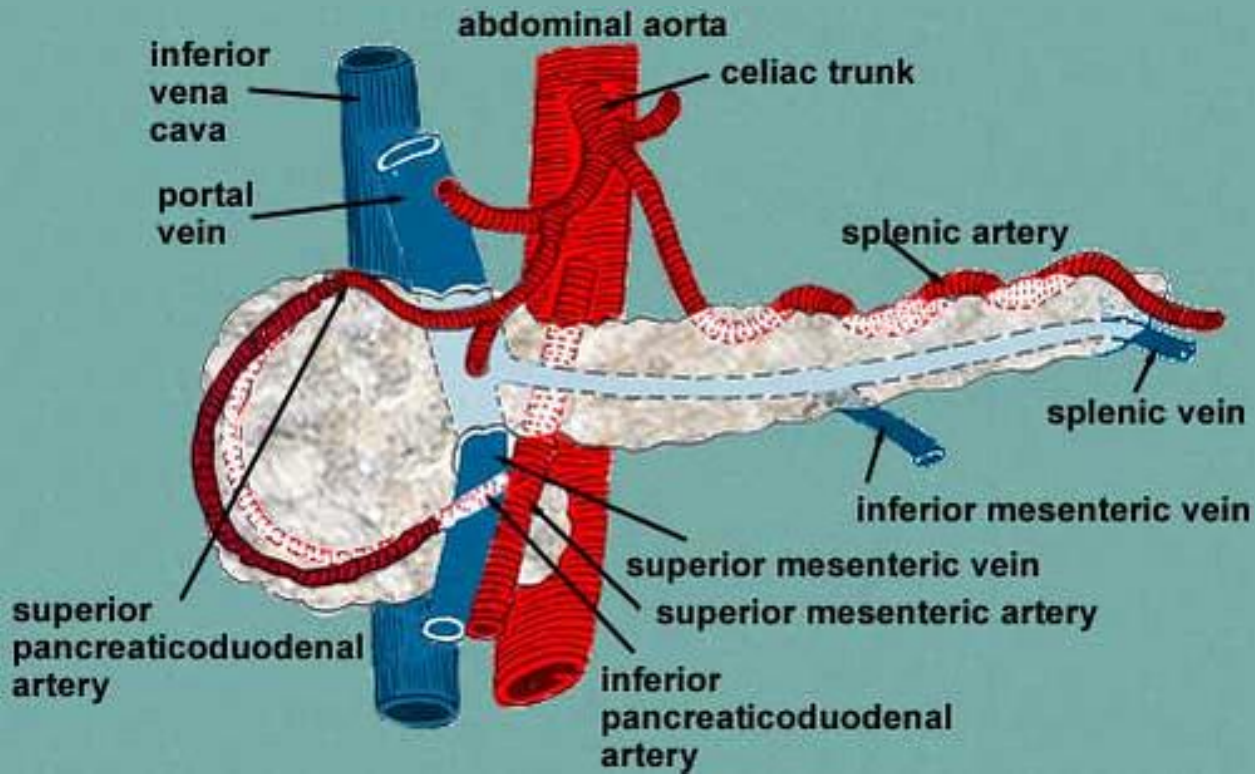


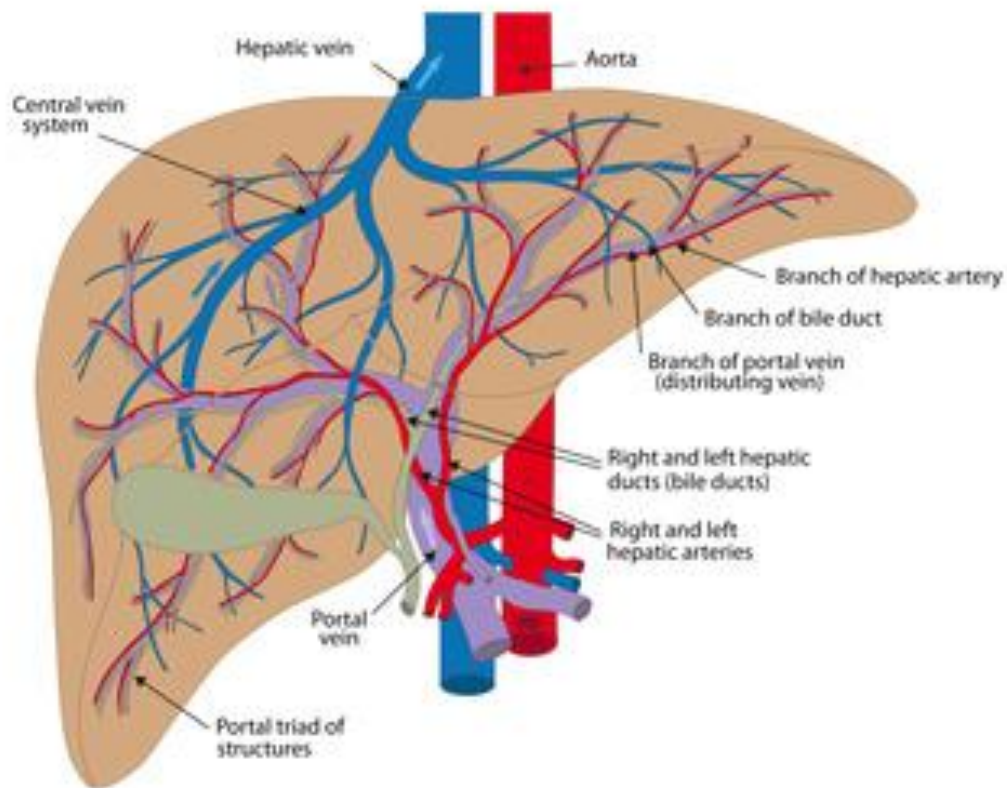


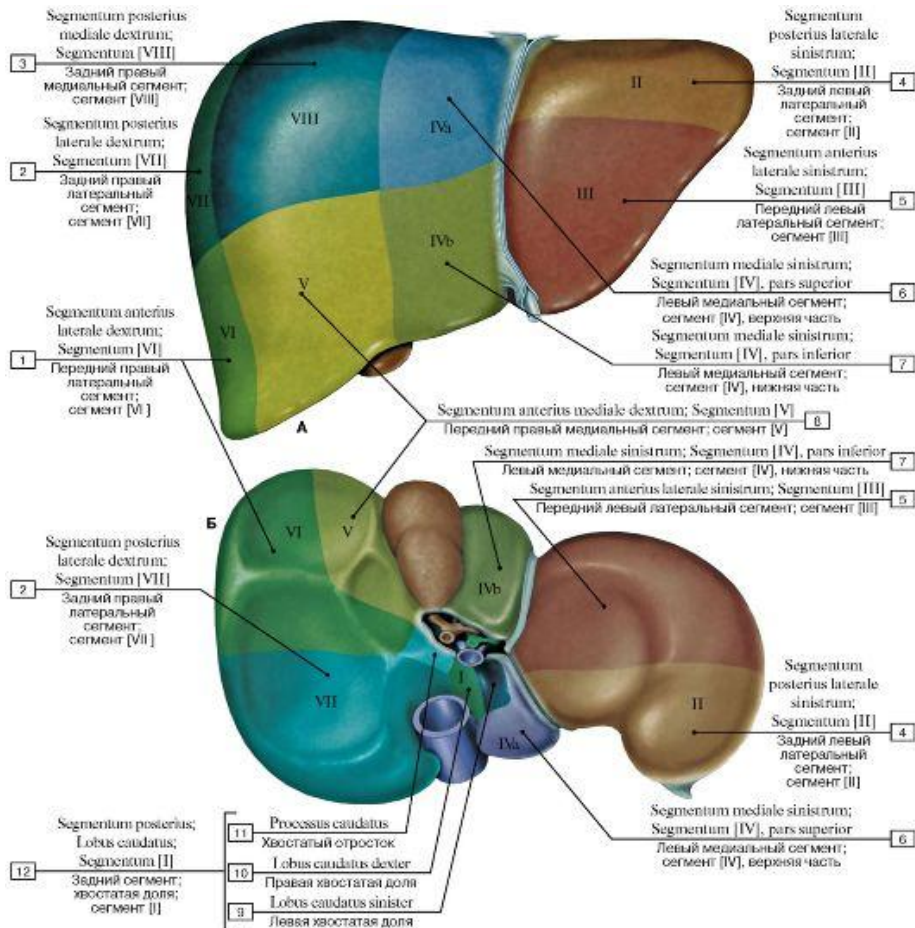


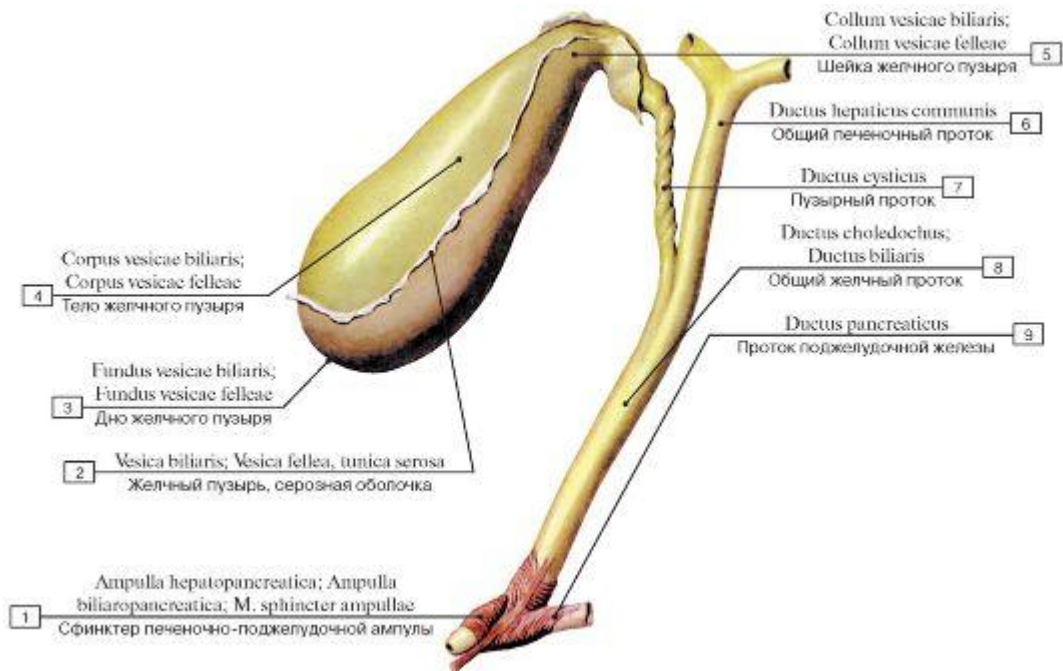


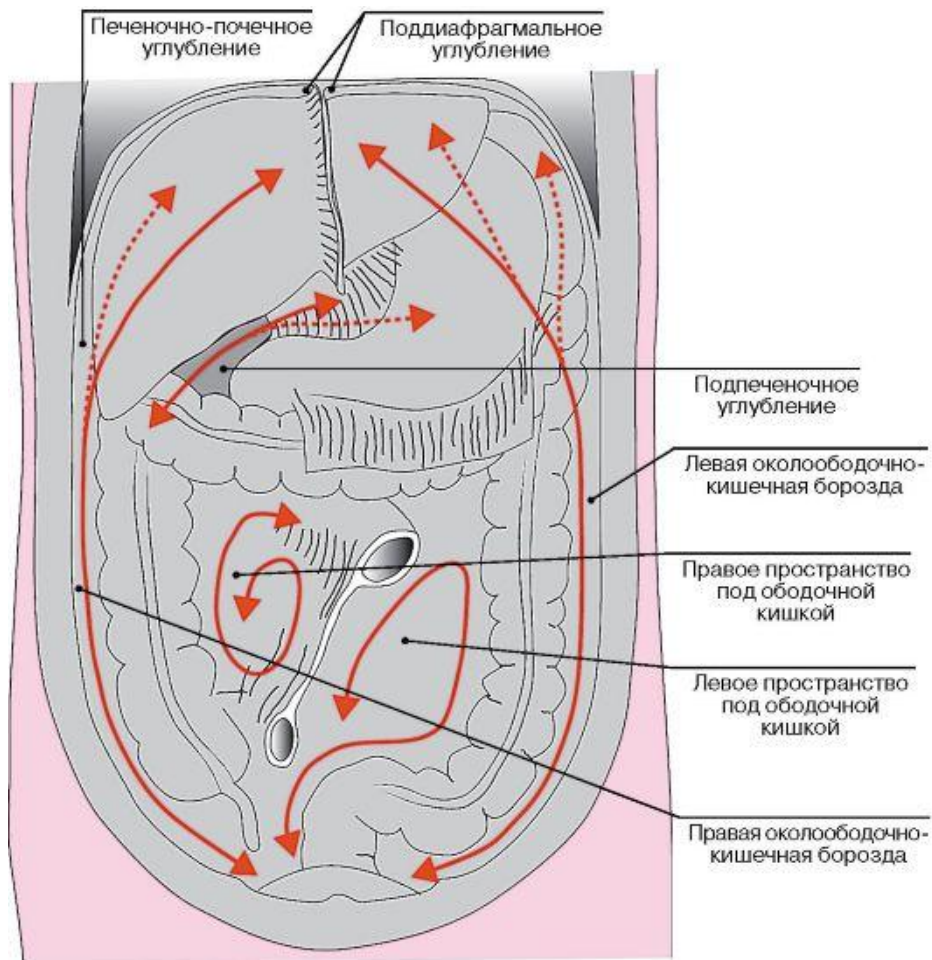


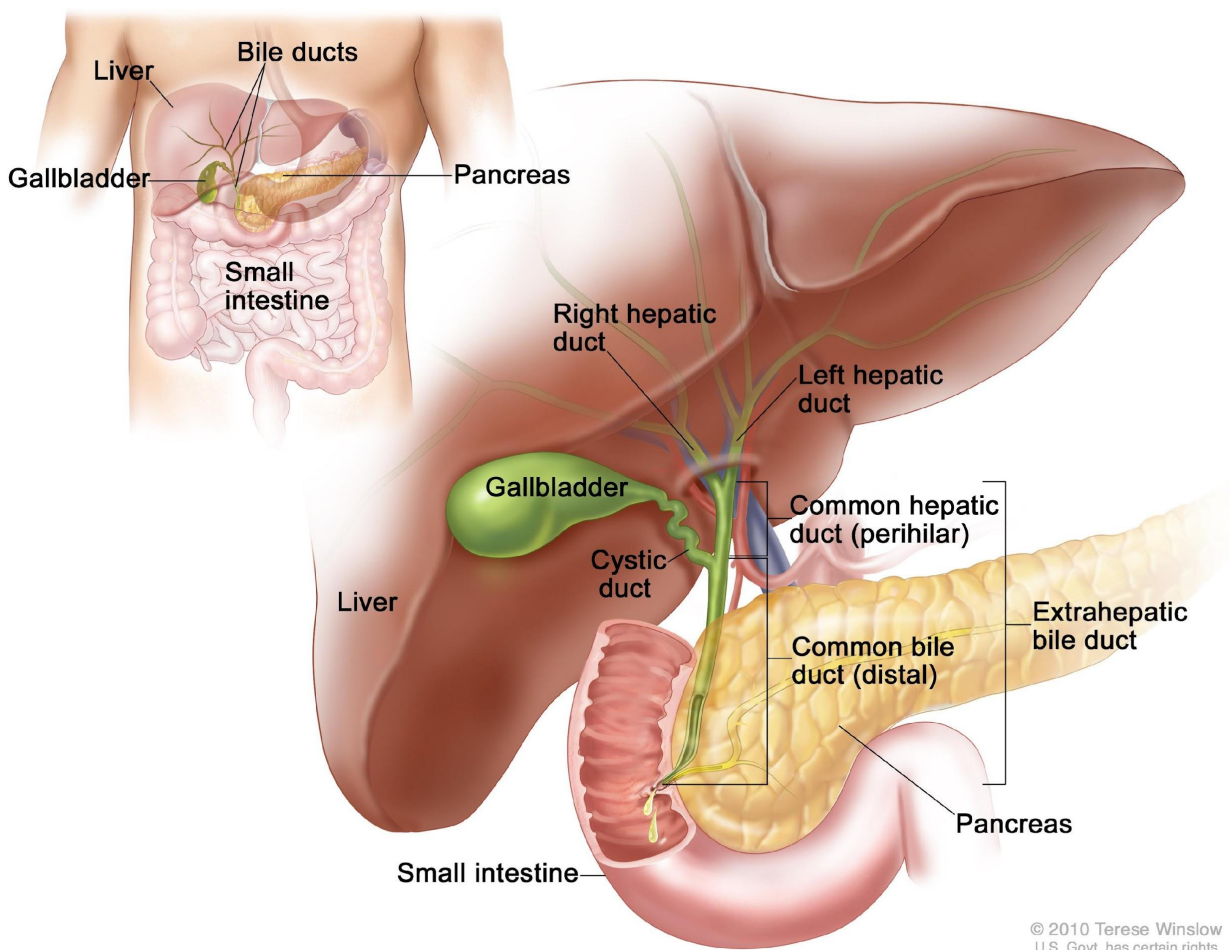


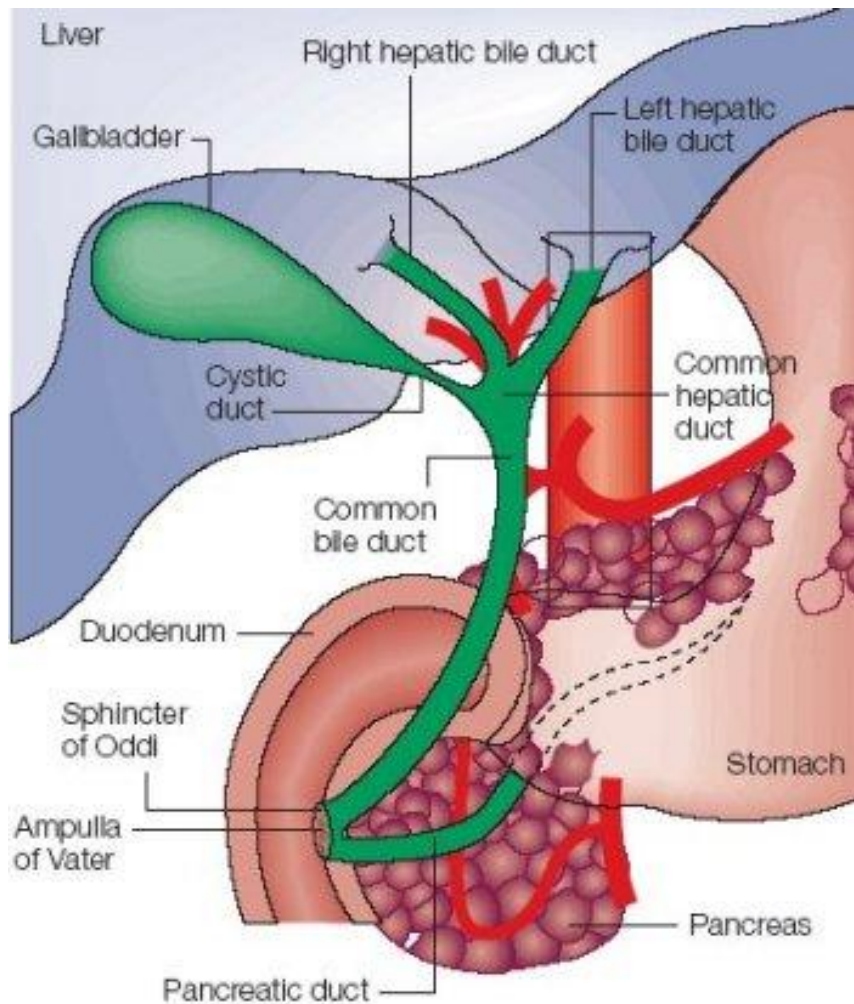


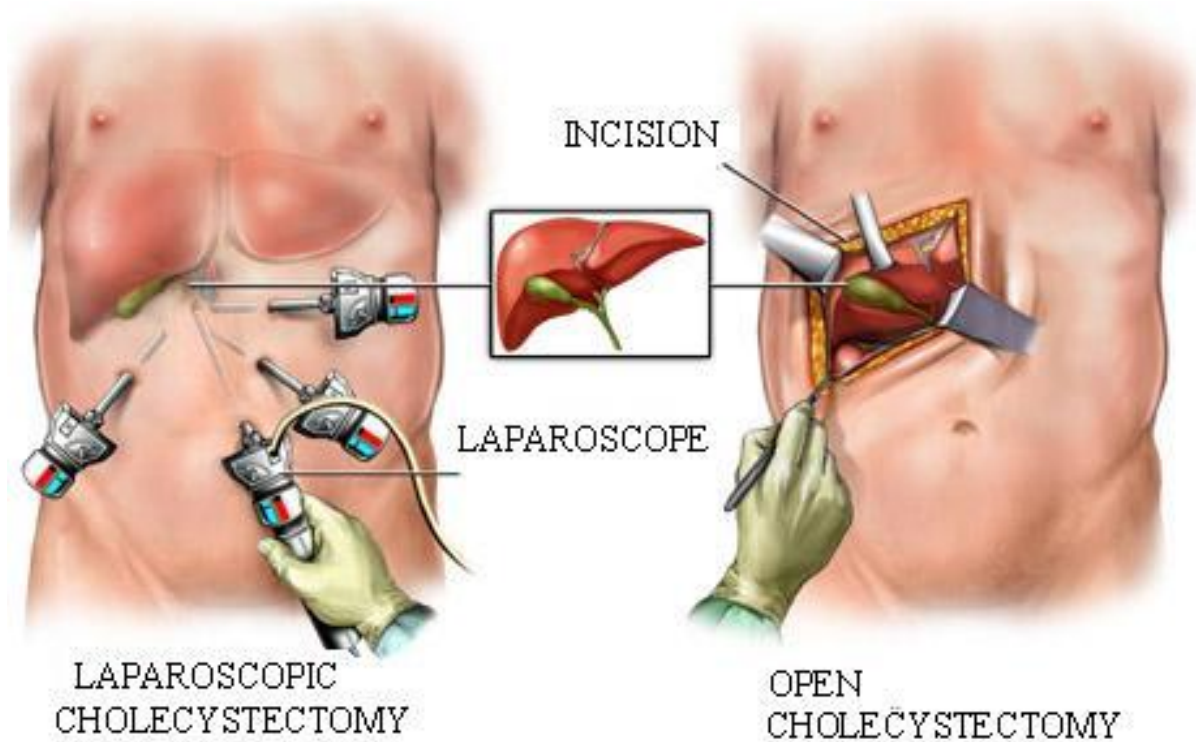










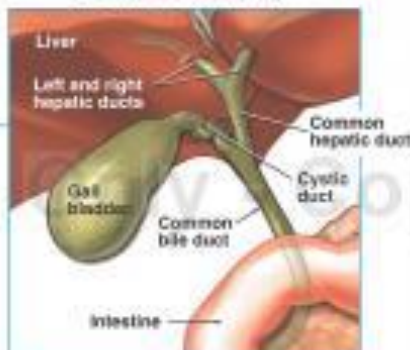


Laparoscopic Cholecystectomy Procedure with Subsequent Bile Duct Injury



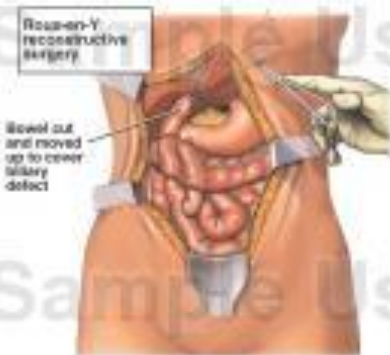
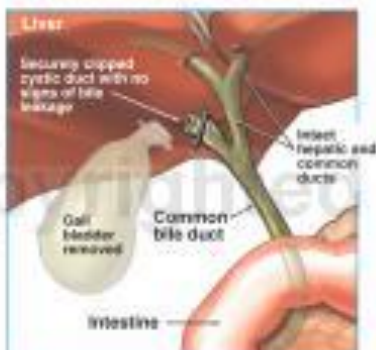
Anterior View of Abdomen

Normal Anatomy

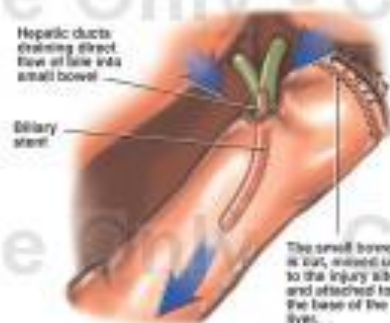


Enlarged View of Gall Bladder and Ducts

Correct Post-op Condition

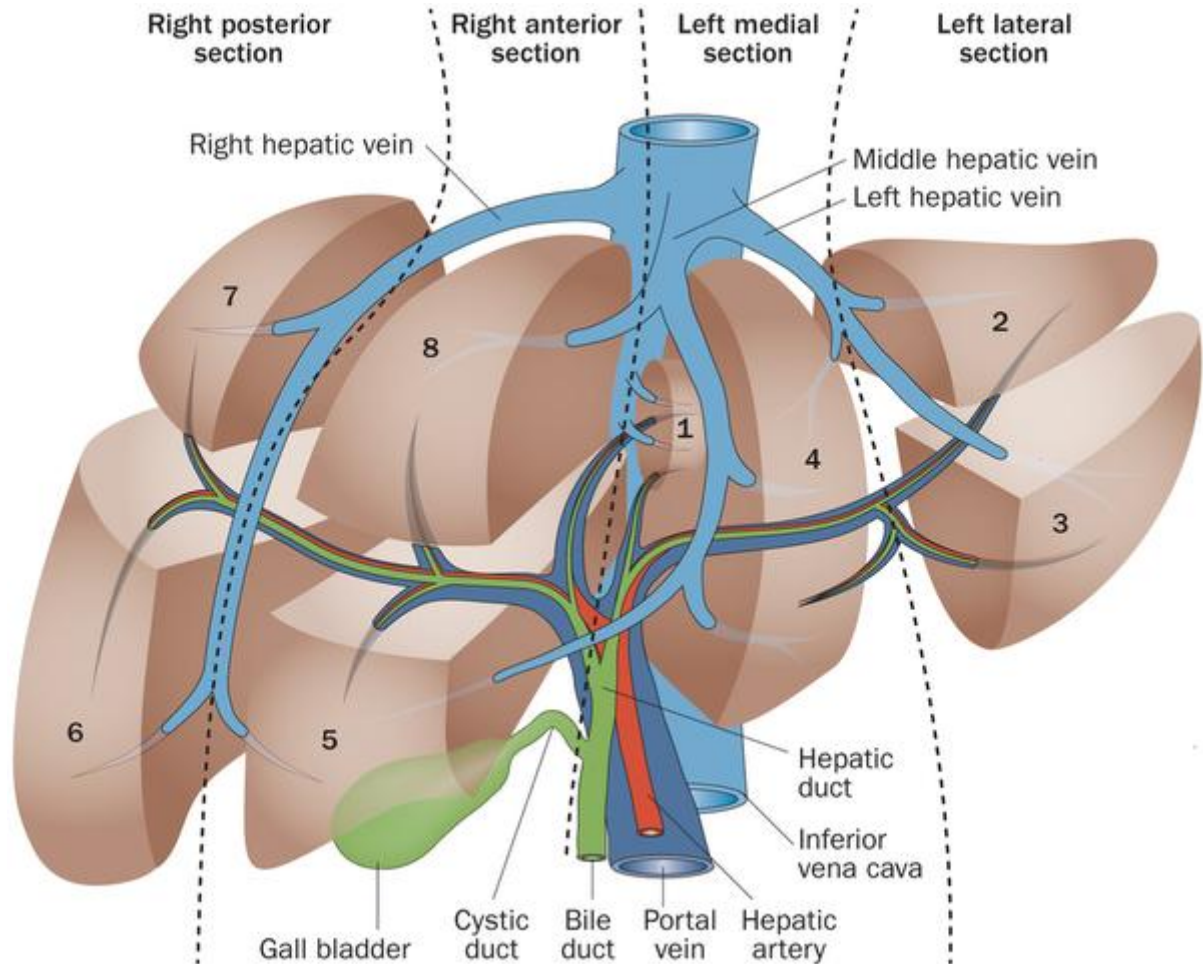


Biliary Reconstruction

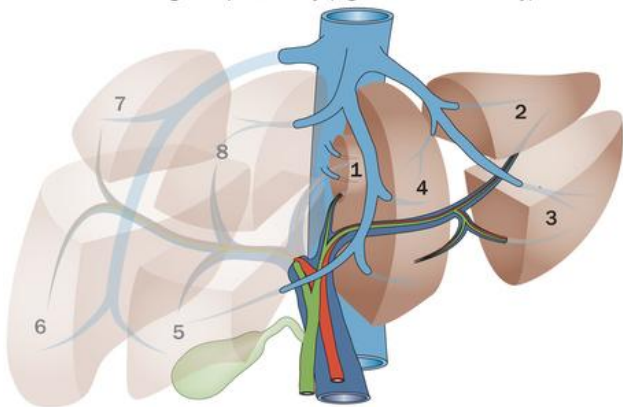


Actual Post-operative Condition

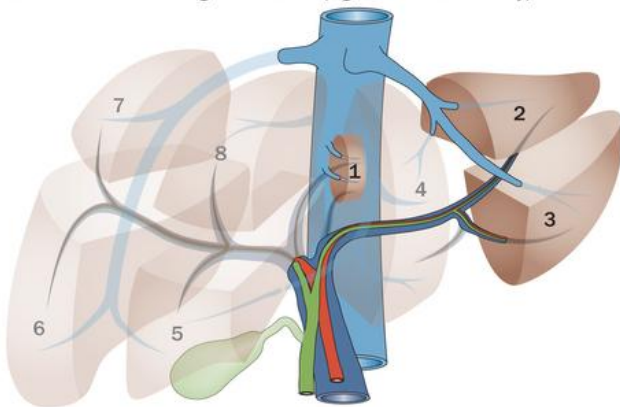




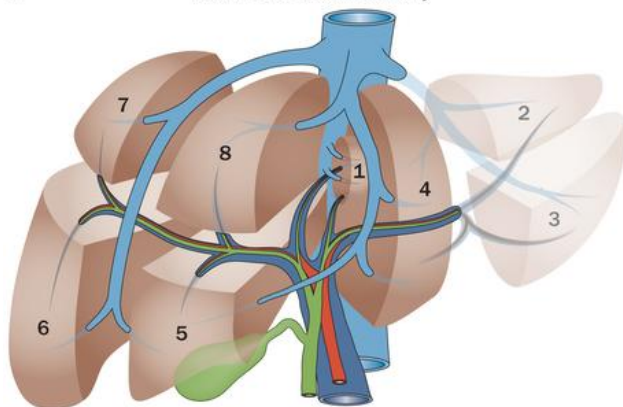
a Formal right hepatectomy (right bissectionectomy)



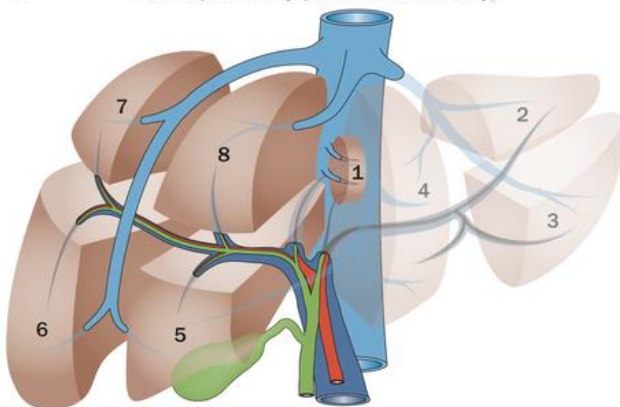
b Extended right resection (right trisectionectomy)

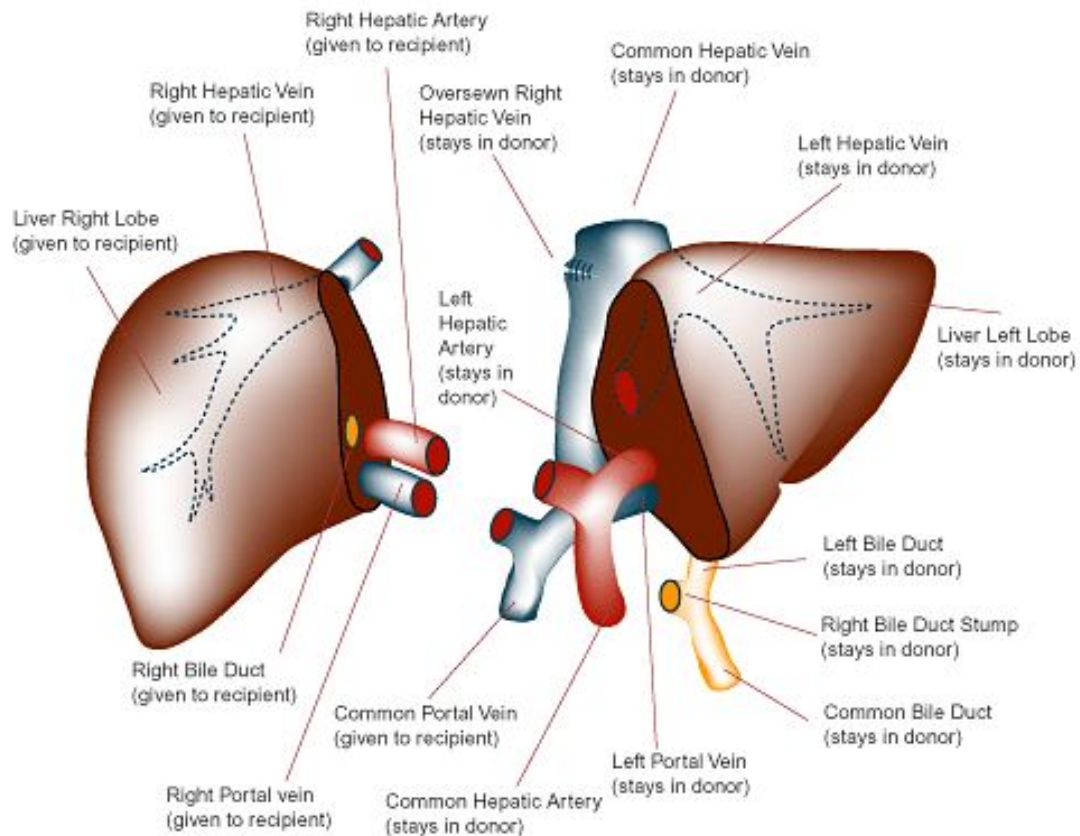


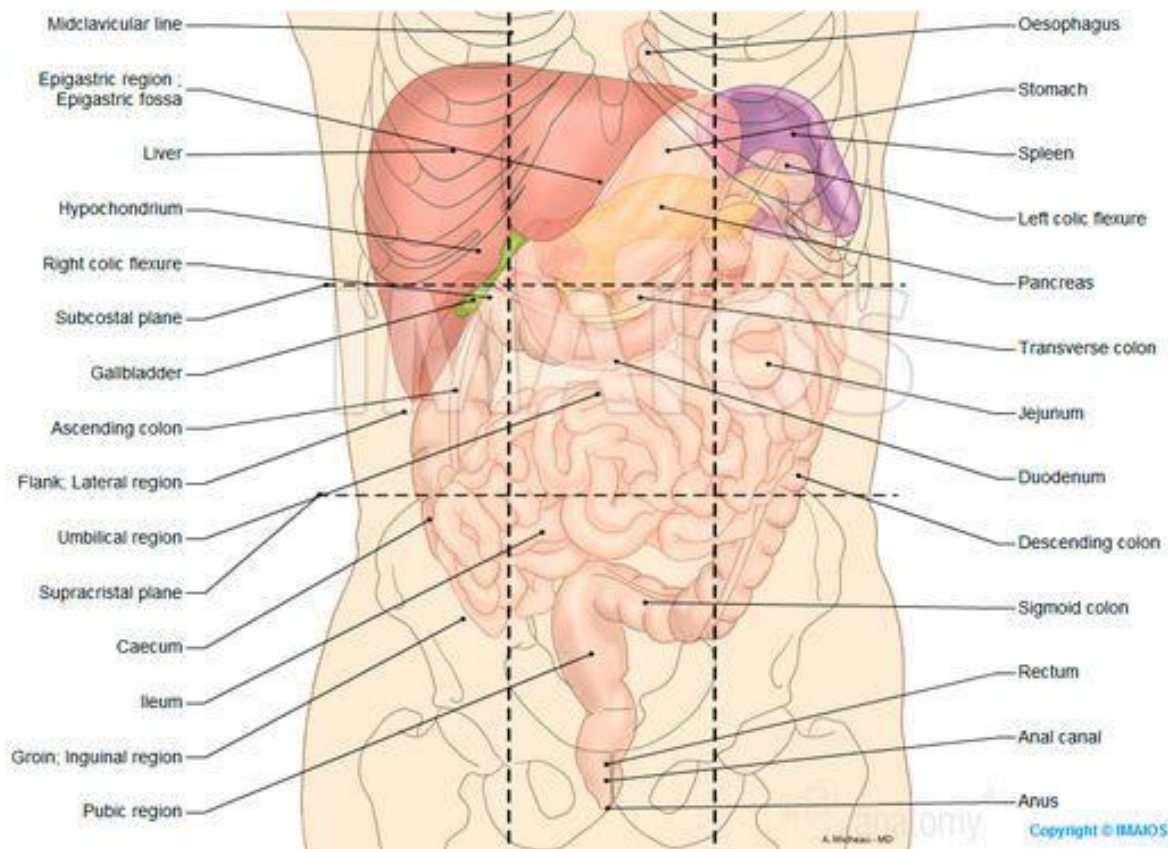
c Left lateral sectionectomy

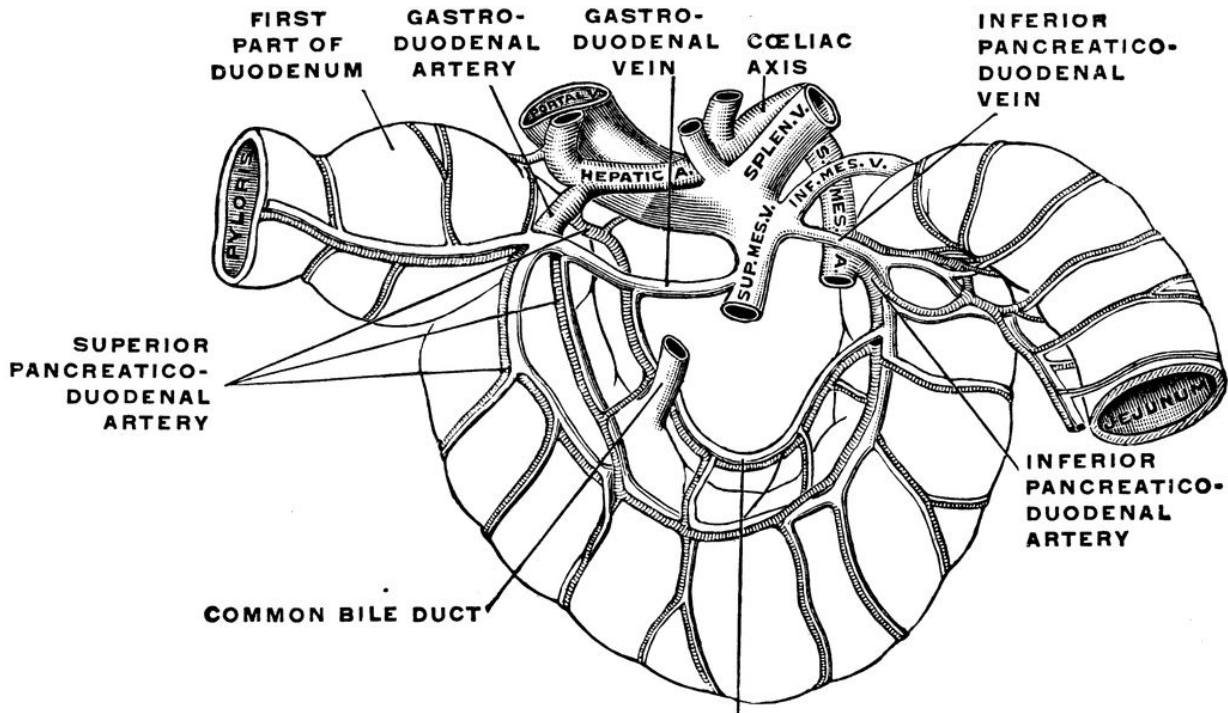


d Left hepatectomy (left bissectionectomy)

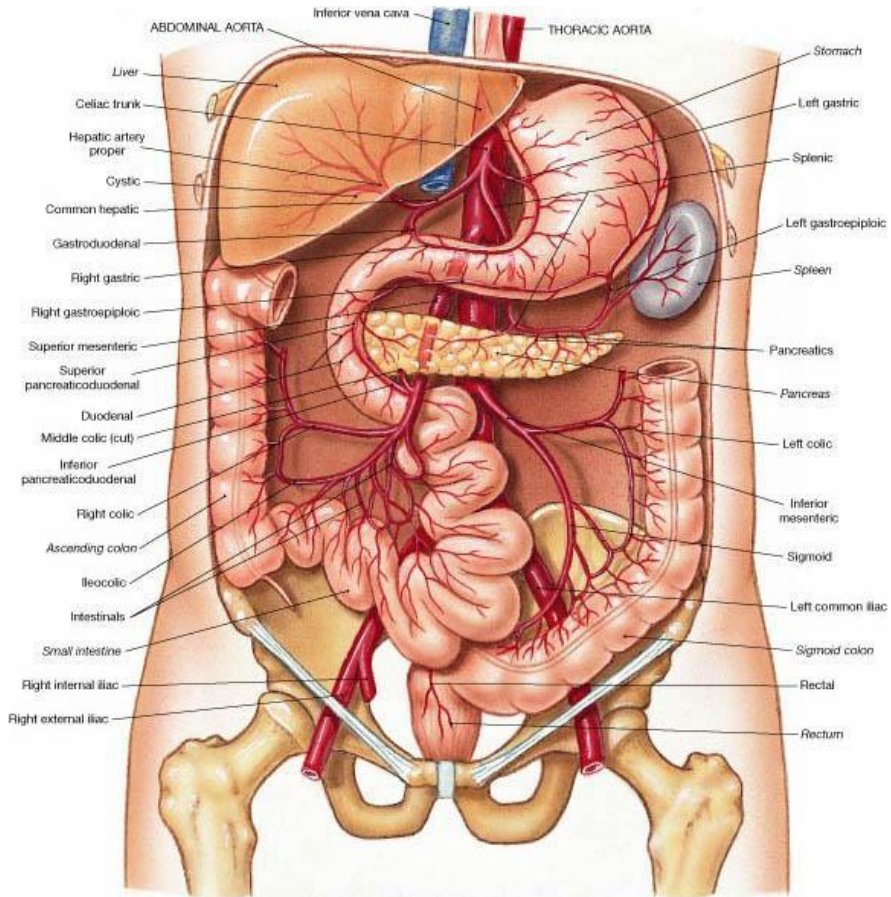




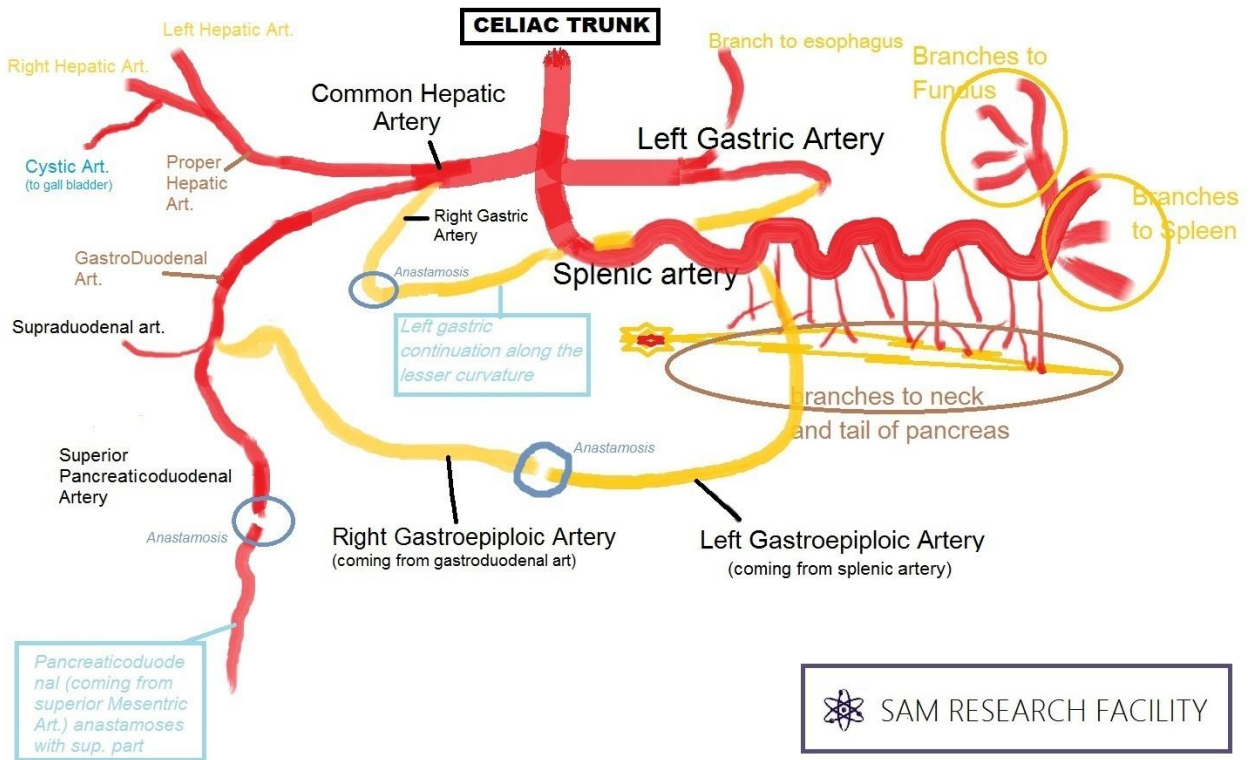




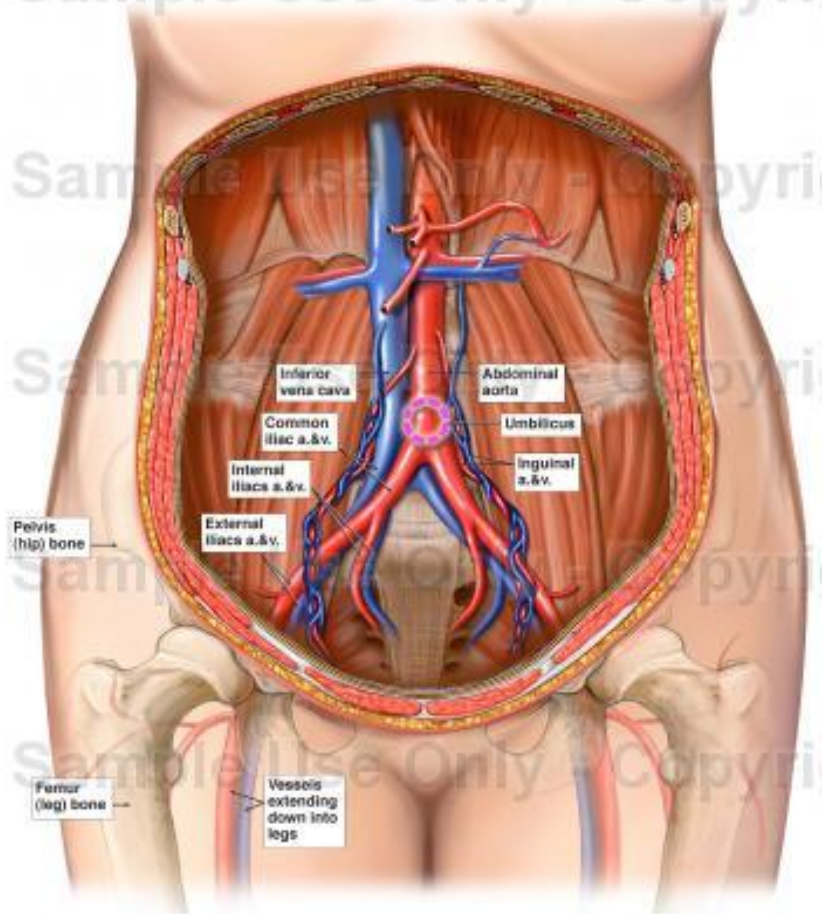
ANASTOMOSIS OF THE TWO PANCREATICO-DUODENAL ARTERIES



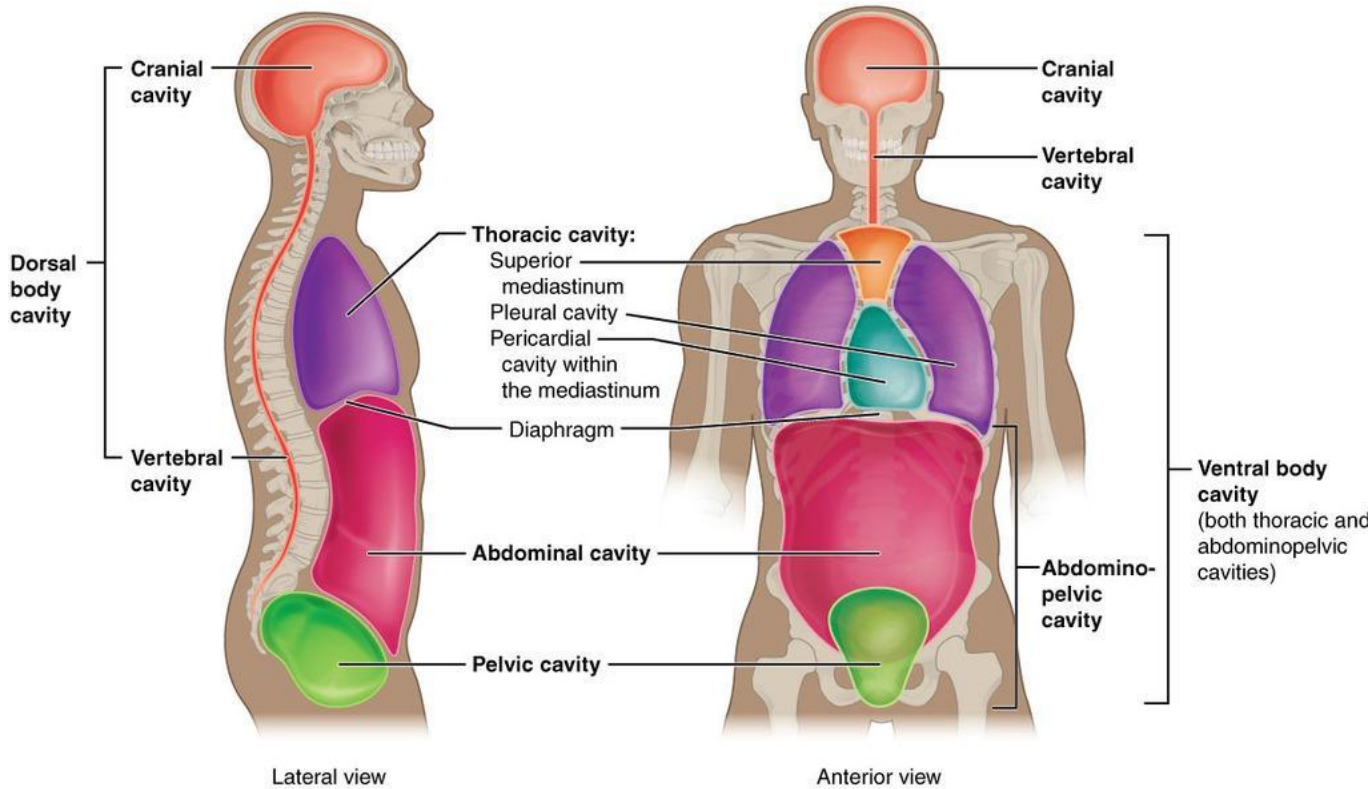
(b) Arteries supplying abdominal organs, anterior view



Anatomy of the Female Abdomen and Pelvis



Anterior (front) view



STUDY

ANATOMY

LEARN SURGERY