

maxillary nerve

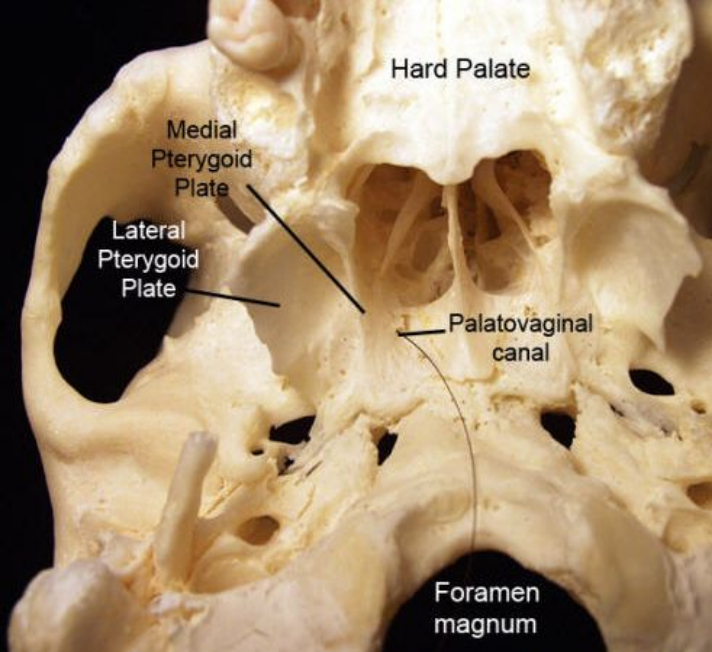
zygomatic nerve

infraorbital nerve

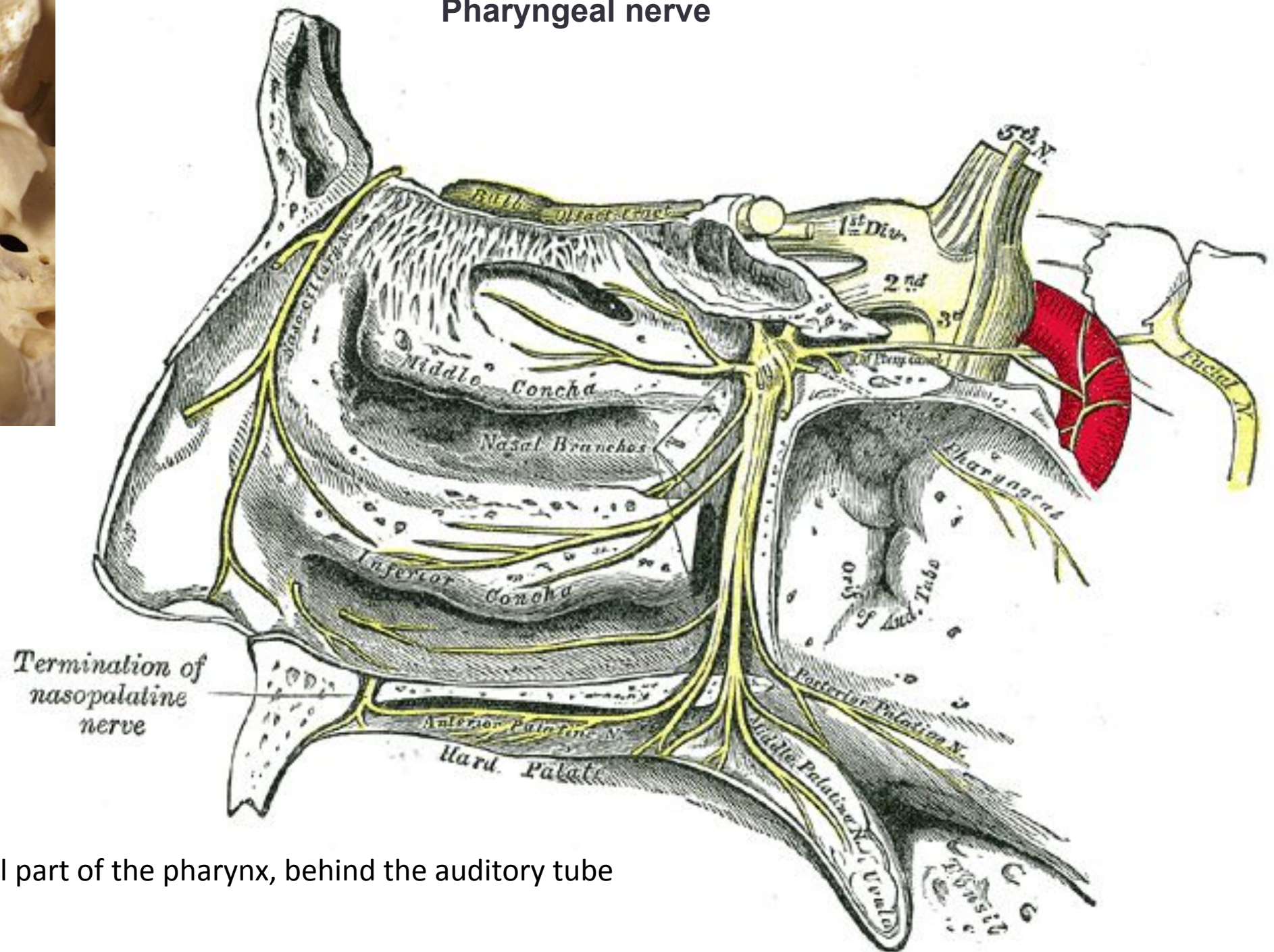
- Superior alveolar nerve (anterior, posterior and middle)
- Middle meningeal nerve
- Infraorbital nerve
- Zygomatic nerve
- Inferior palpebral nerve
- Superior labial nerve
- Pharyngeal nerve
- Greater and lesser palatine nerves
- Nasopalatine nerve

ganglion pterygopalatinum

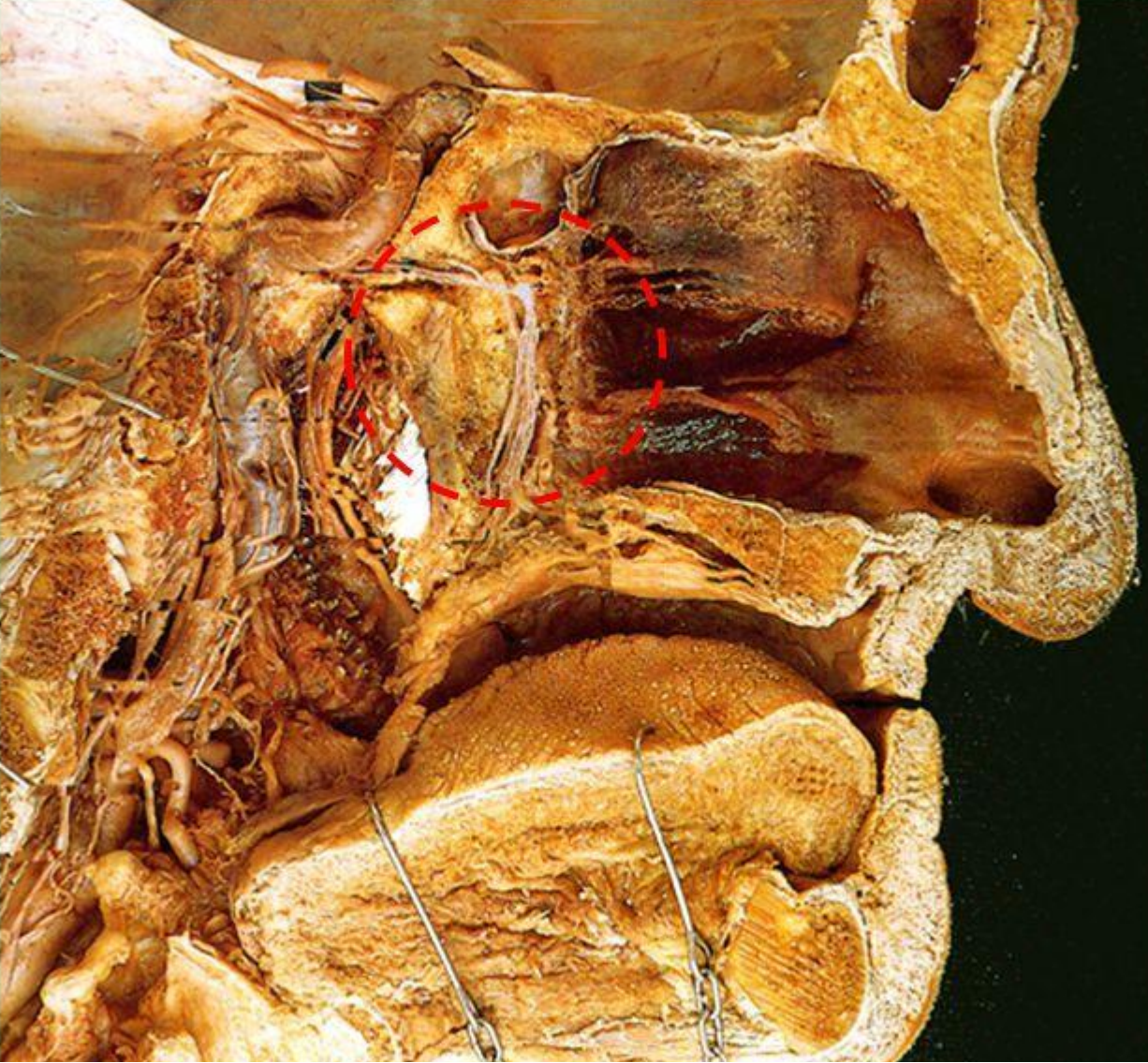
superior dental nerves



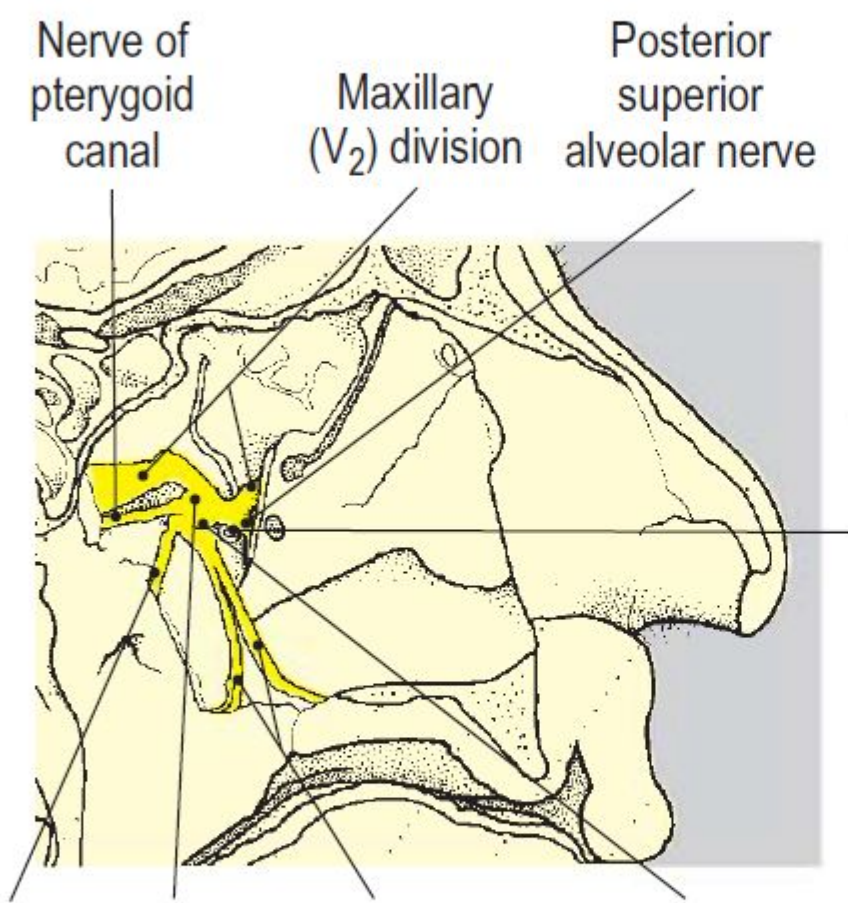
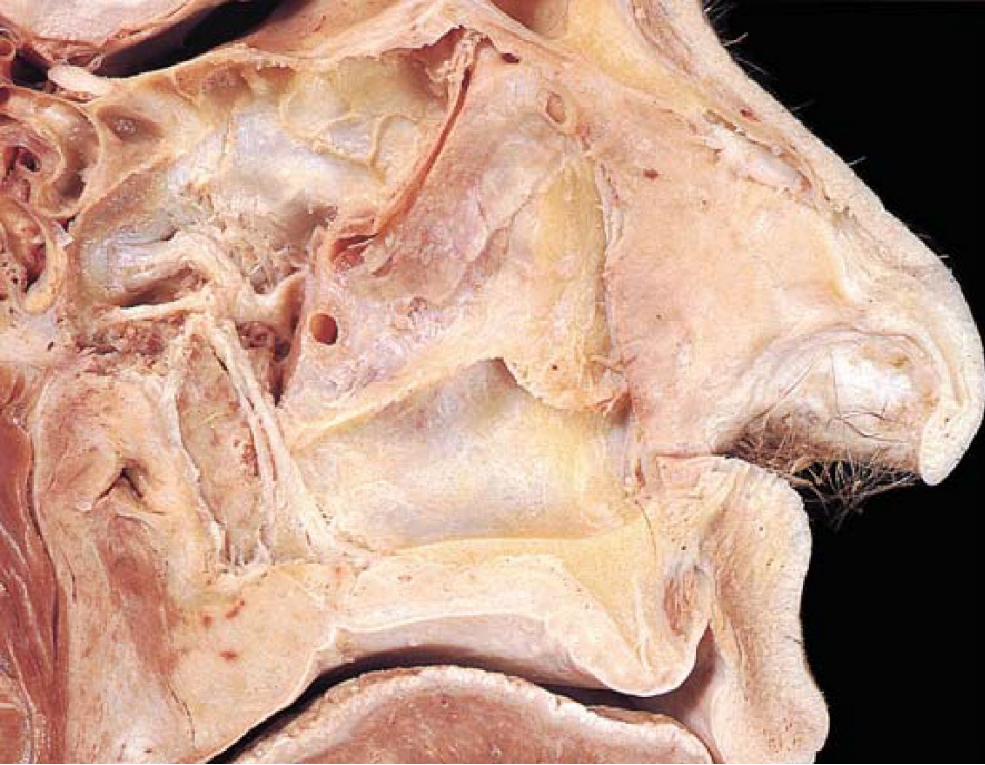
Pharyngeal nerve



mucous membrane of the nasal part of the pharynx, behind the auditory tube



n. Intermedius - portio intermedia n. Facialis - n. petrosus major

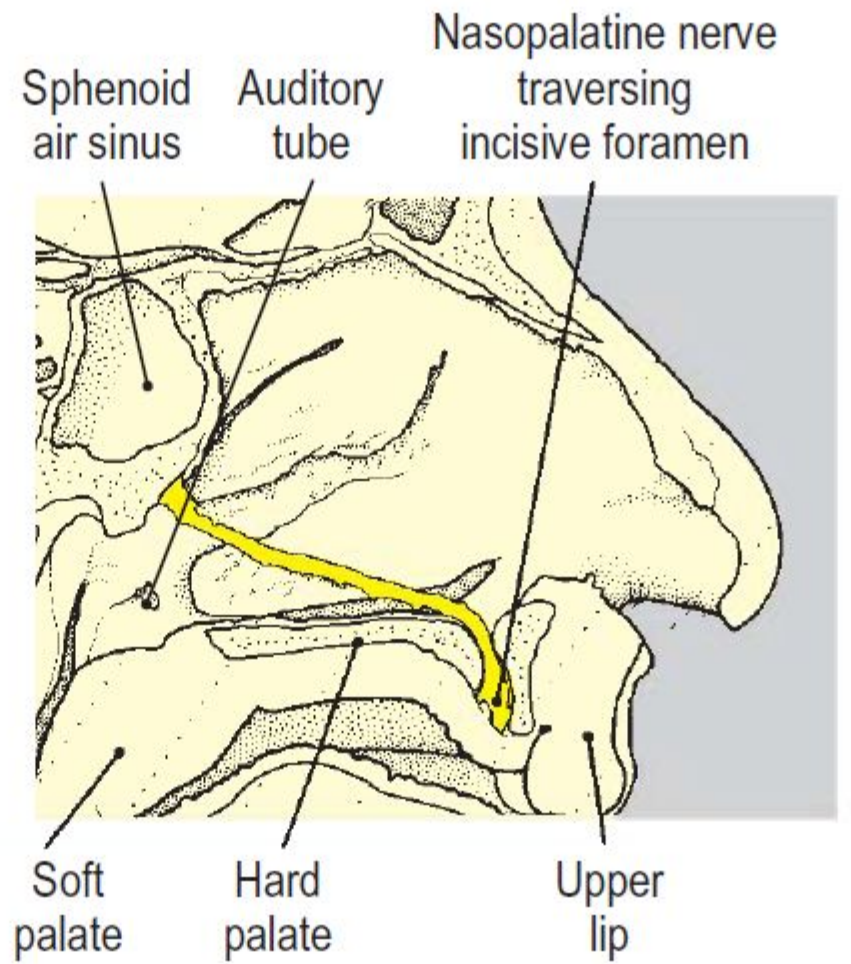


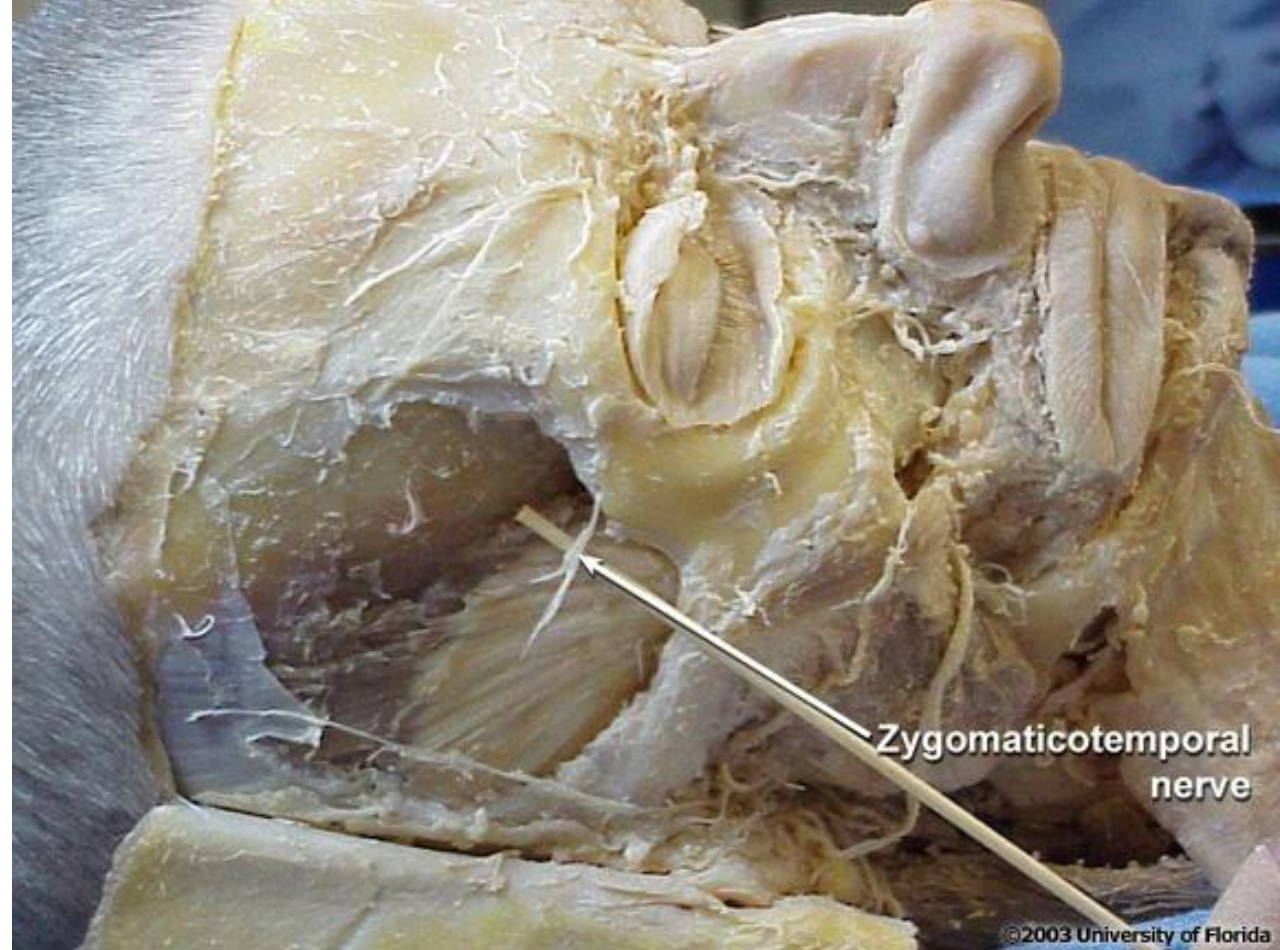
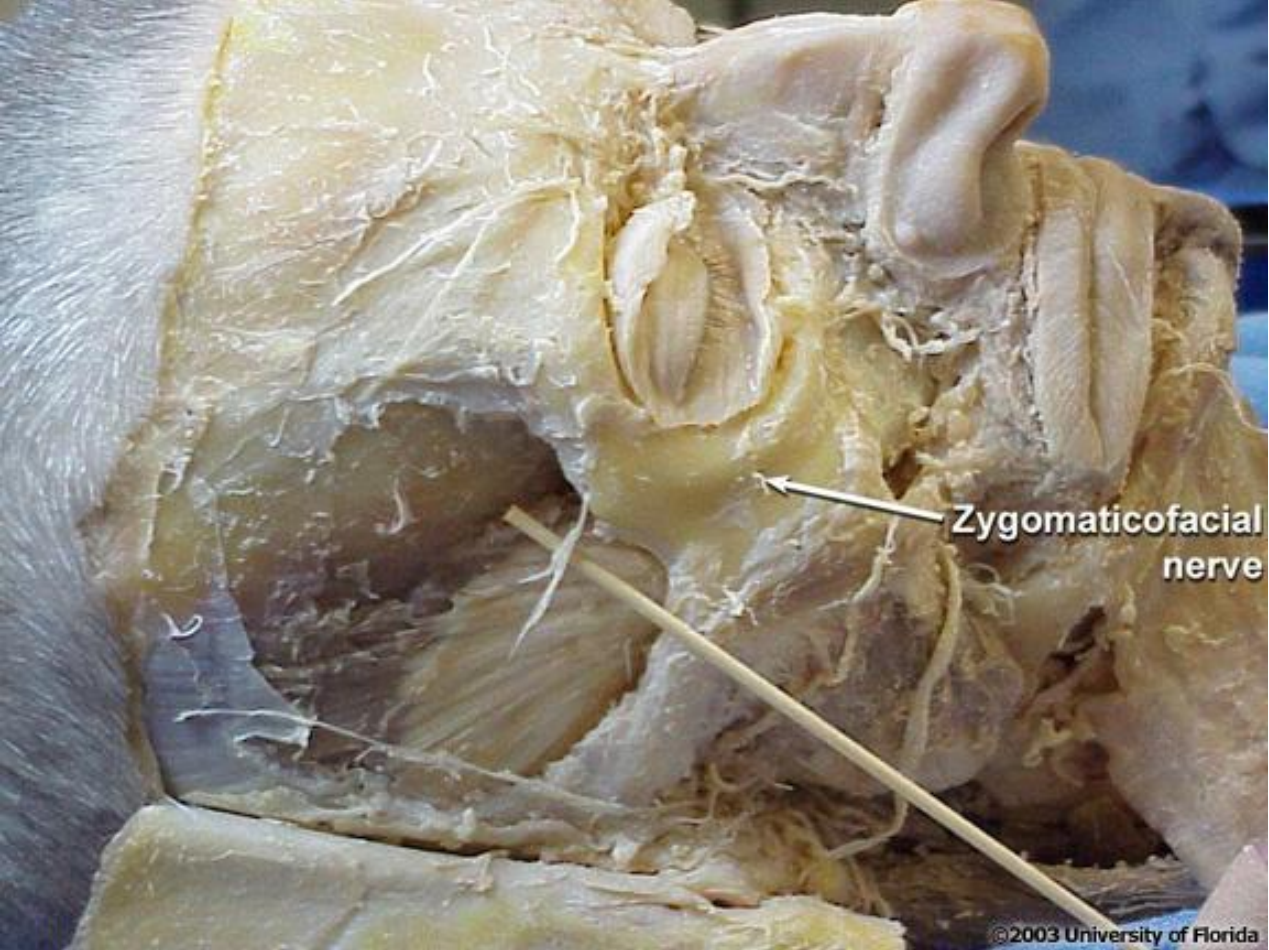
Pharyngeal branch Pterygo-palatine ganglion Lesser and greater palatine nerves Posterior lateral nasal nerve

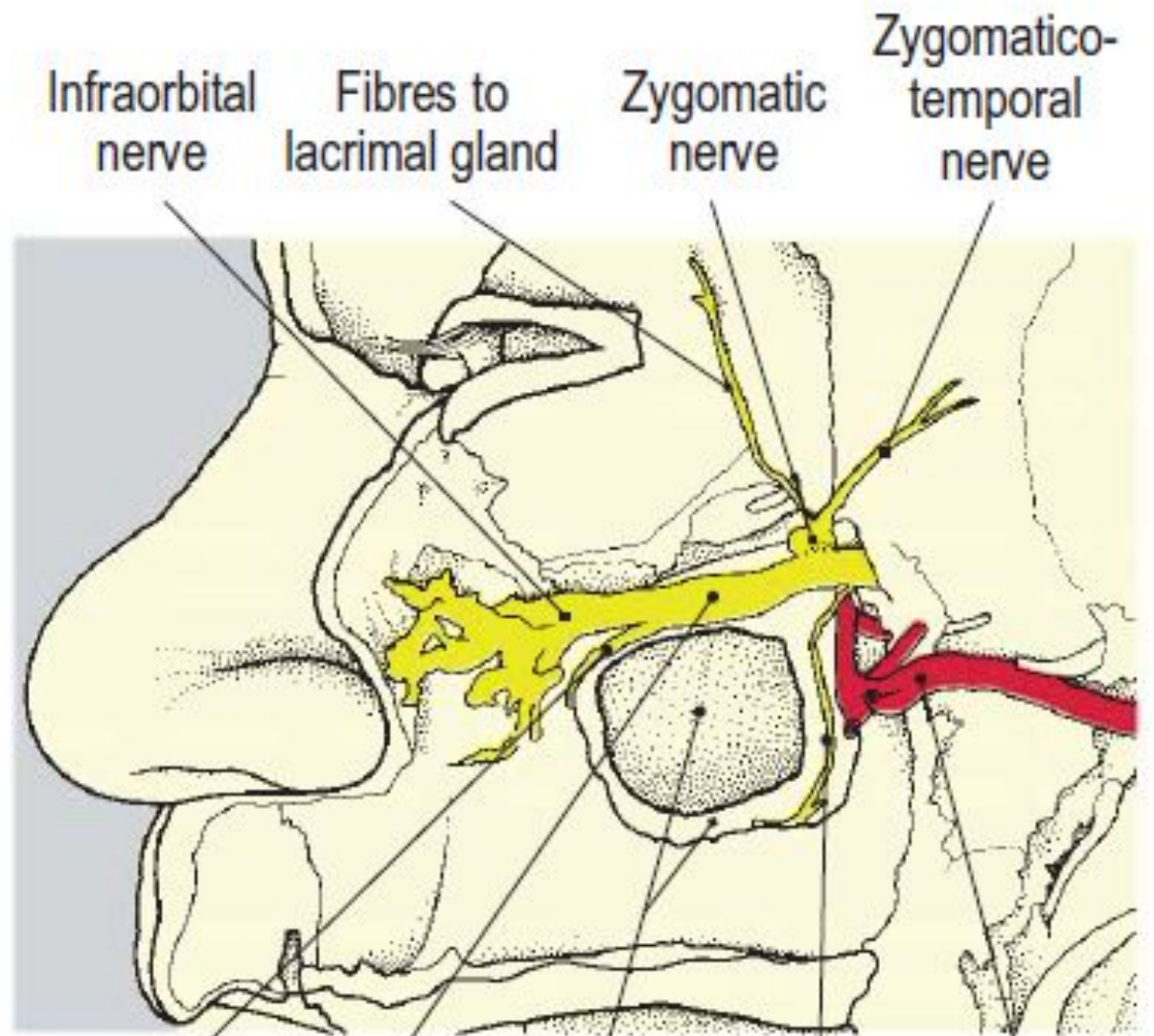
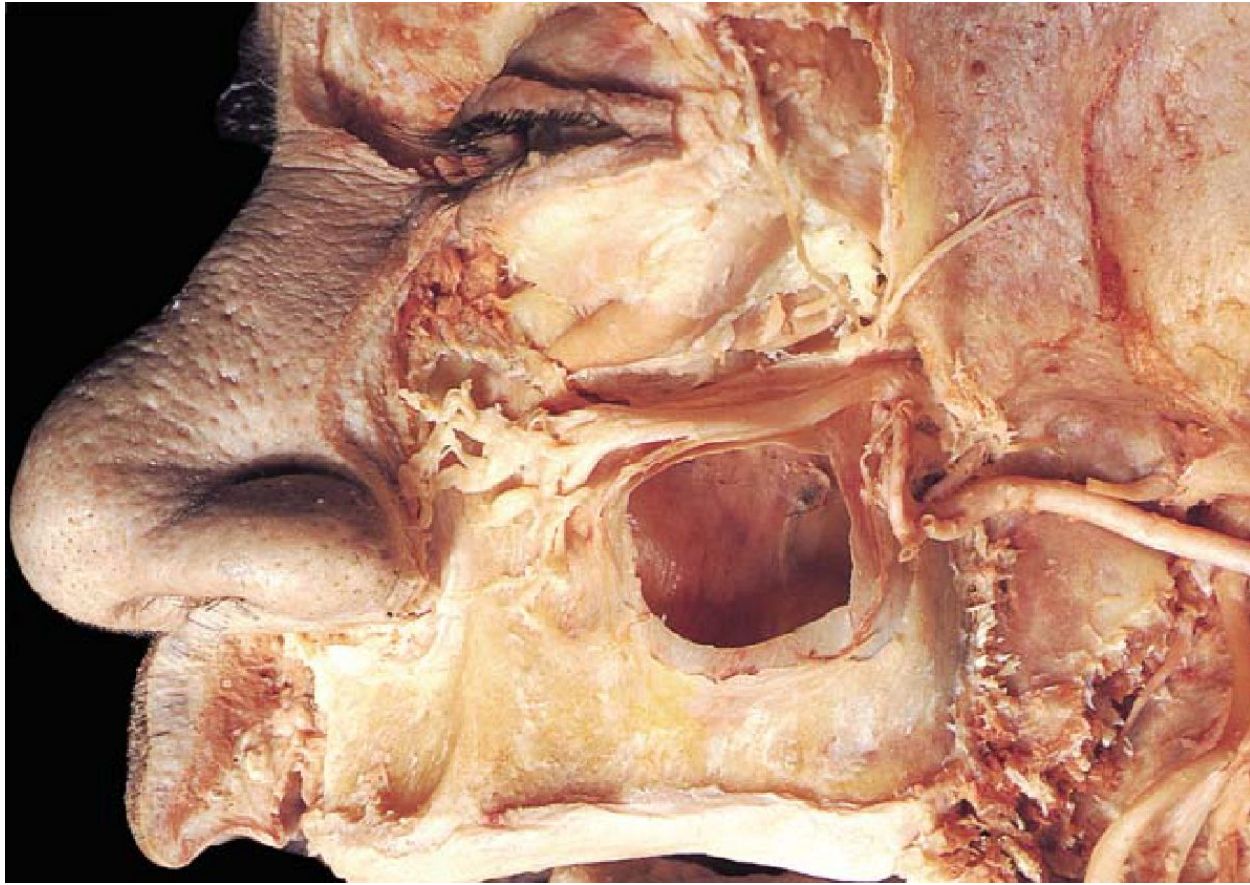
Medial view of the contents of the pterygopalatine fossa



nasopalatine nerve



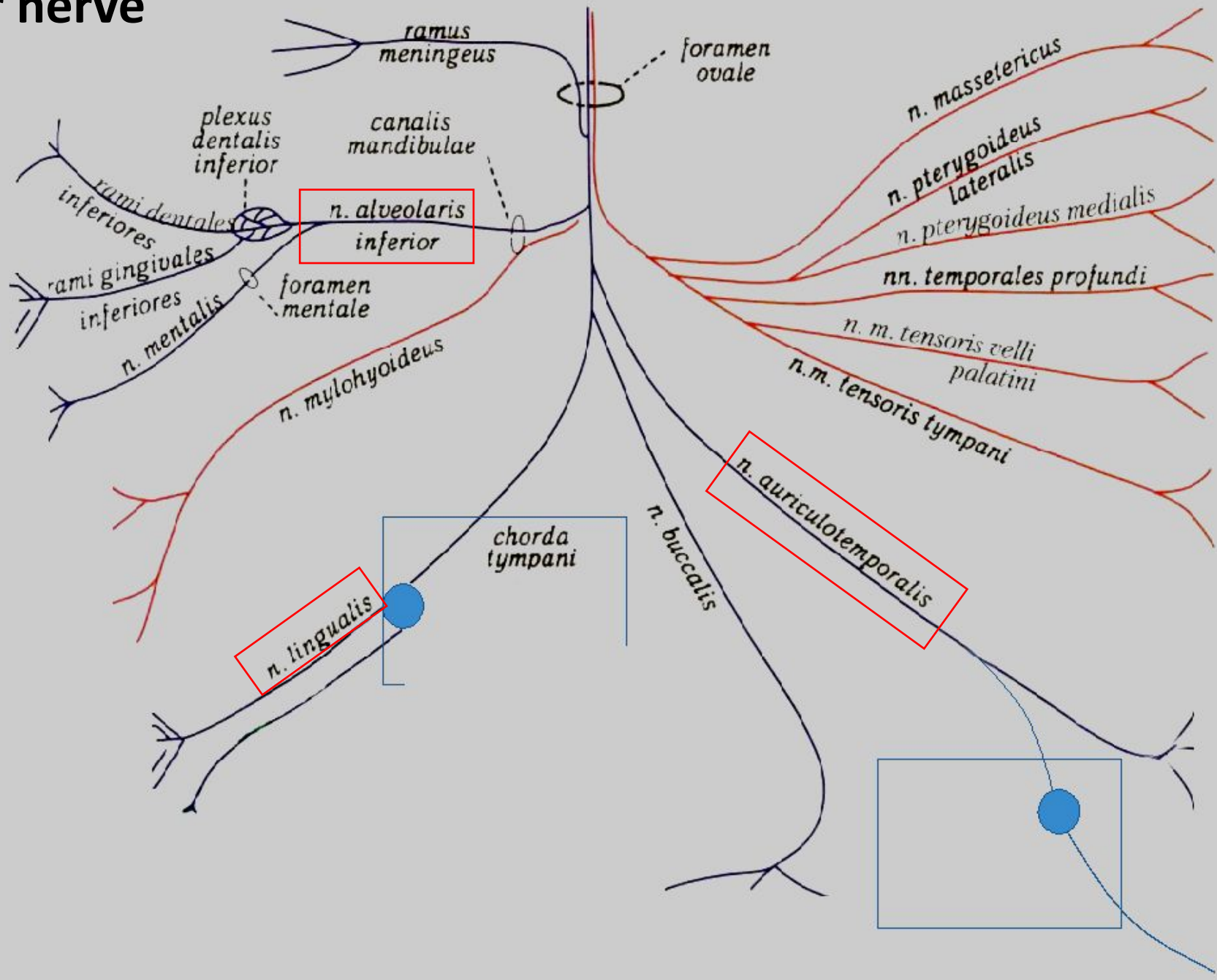


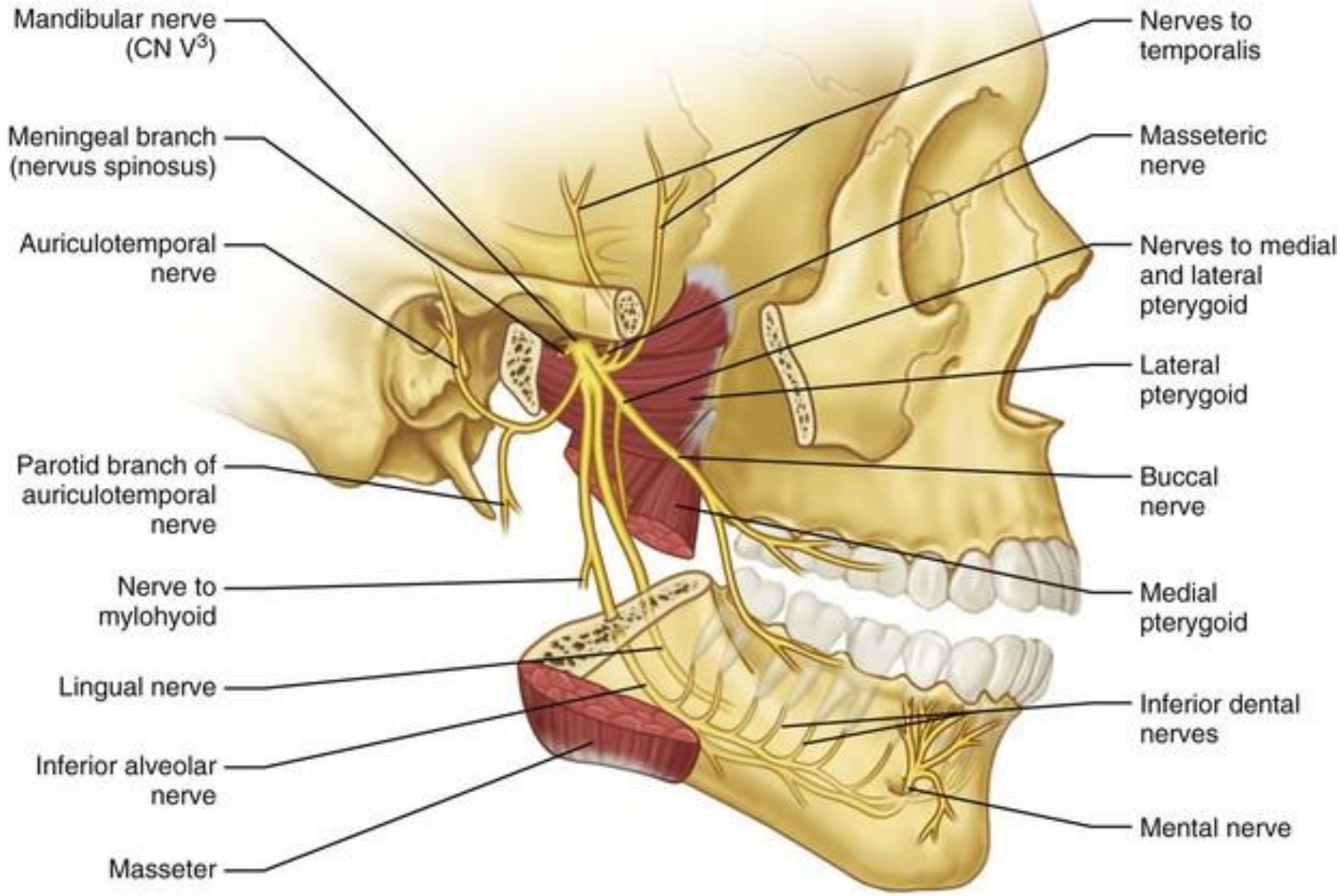


Infraorbital nerve Fibres to lacrimal gland Zygomatic nerve Zygomaticotemporal nerve

Anterior superior alveolar nerve Maxillary (V₂) division Maxillary air sinus and its mucosa Posterior superior alveolar nerve Maxillary artery

mandibulär nerve





1. The buccal nerve (n. buccalis)
2. The lingual nerve (n. lingualis)
3. The inferior dental nerve (n. alveolaris inferior)
4. The auriculotemporal nerve (n. auriculotemporalis)

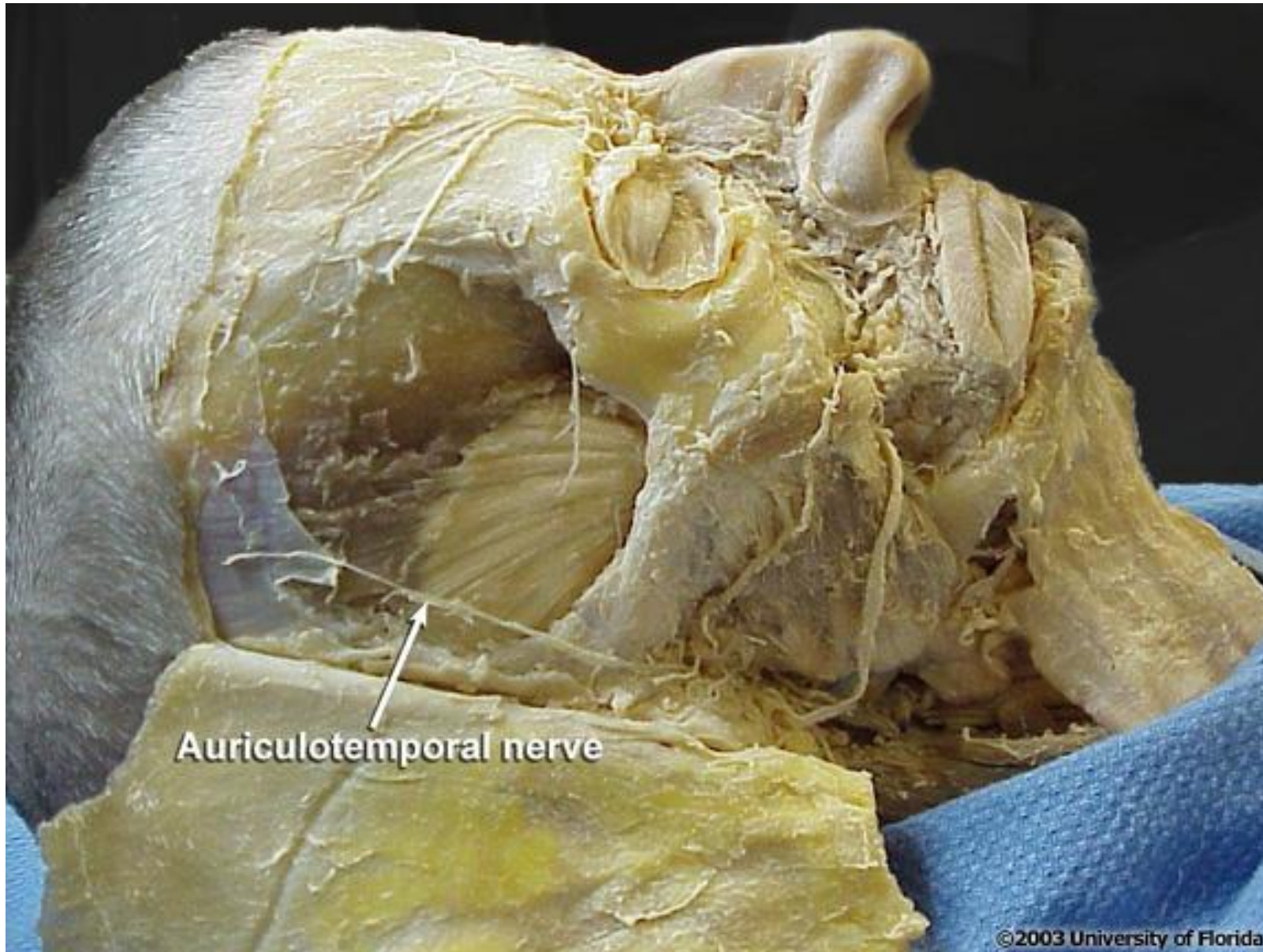
Muscle branches for innervation chewing muscles .

Buccal Nerve

- contains sensory fibres
the buccal membranes of the mouth (i.e. the cheek)
second and third molar teeth

Inferior Alveolar Nerve

- carries both sensory and motor axons: mylohyoid nerve - mylohyoid and anterior digastric muscles.
- sensory axons enter the mandibular canal - mandibular teeth.
- mental nerve - lower lip and chin



Auriculotemporal Nerve

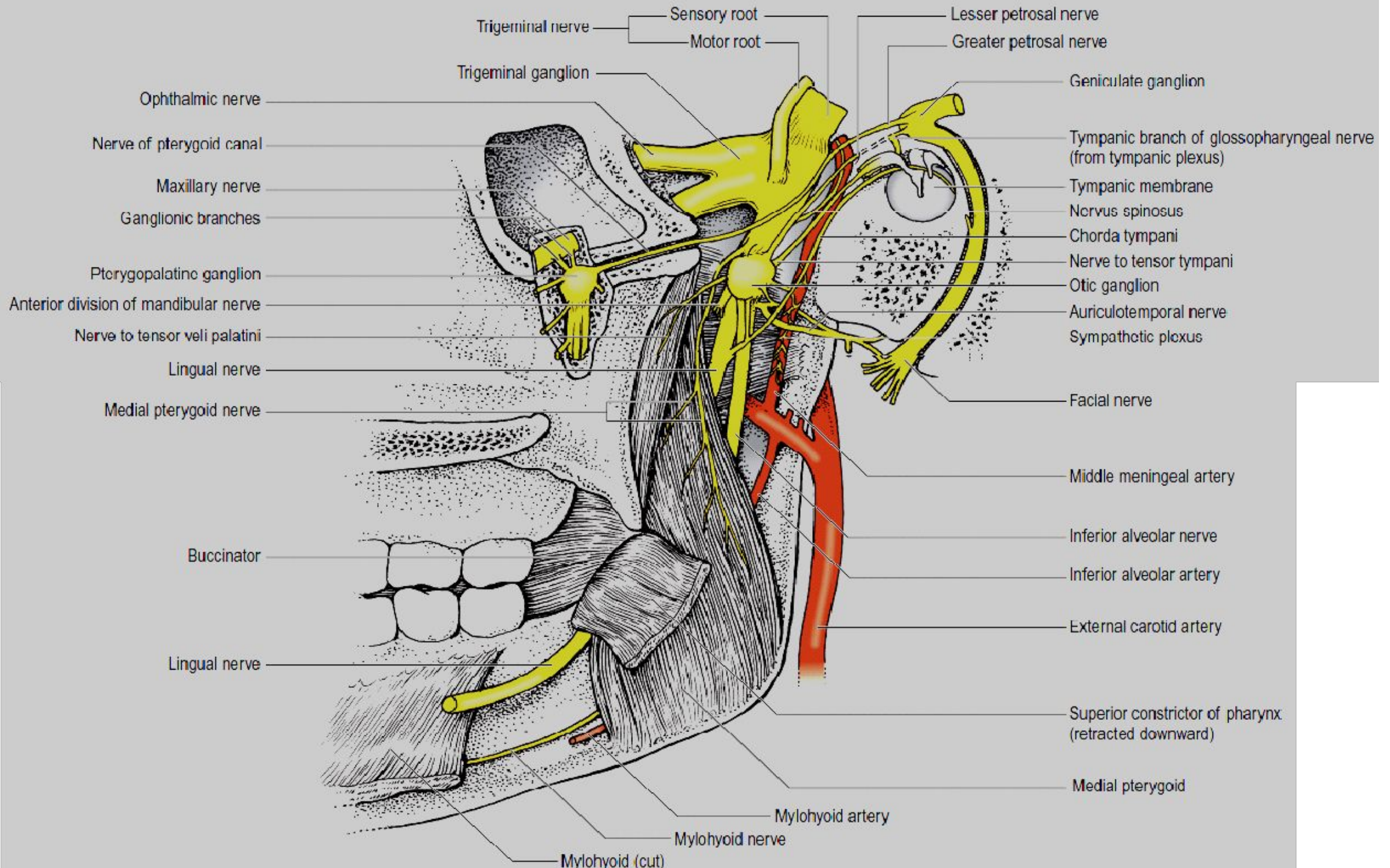
- Superior root – comprises sensory fibers.
- Inferior root – carries secretory-motor parasympathetic fibers, originating from CN IX, to the parotid gland.

Anterior part of the auricle

Lateral part of the temple

Anterior external meatus

Anterior tympanic membrane



Trigeminal nerve — Sensory root
 — Motor root

Lesser petrosal nerve
 Greater petrosal nerve

Trigeminal ganglion — Geniculate ganglion

Ophthalmic nerve
 Nerve of pterygoid canal
 Maxillary nerve
 Ganglionic branches
 Pterygopalatine ganglion
 Anterior division of mandibular nerve
 Nerve to tensor veli palatini
 Lingual nerve
 Medial pterygoid nerve

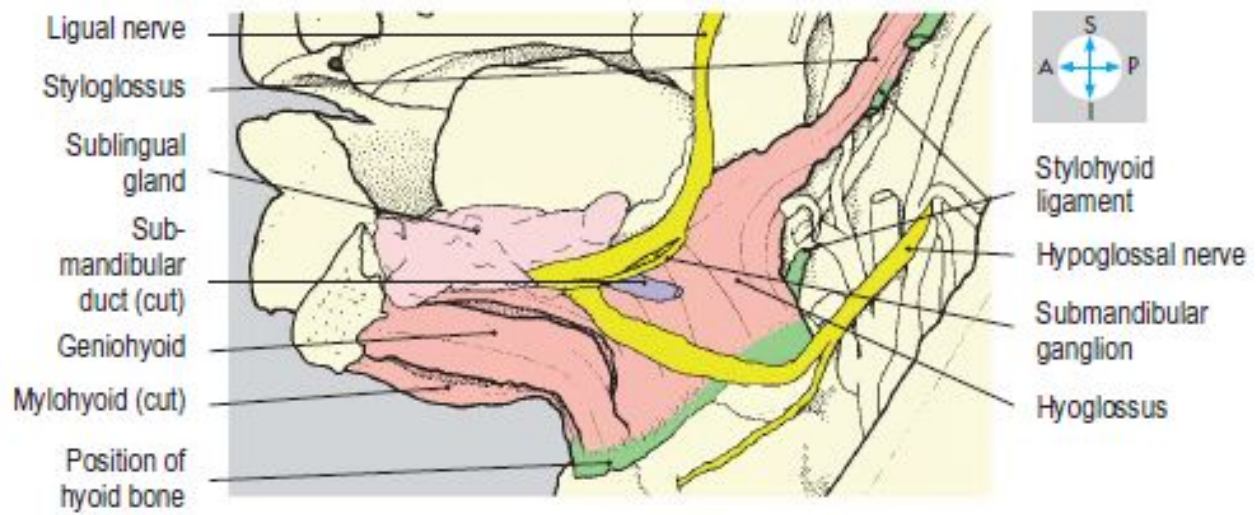
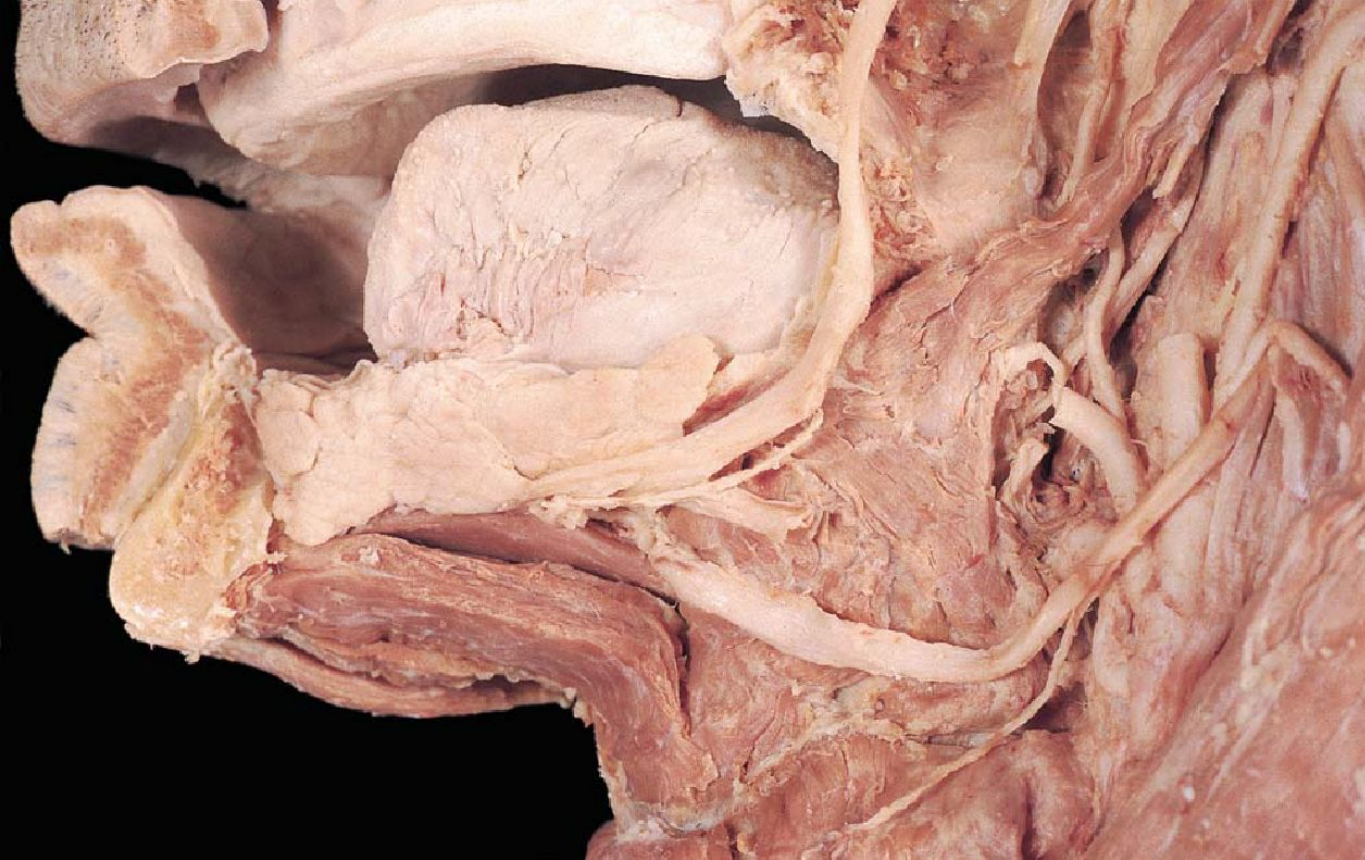
Tympanic branch of glossopharyngeal nerve (from tympanic plexus)
 Tympanic membrane
 Nervus spinosus
 Chorda tympani
 Nerve to tensor tympani
 Otic ganglion
 Auriculotemporal nerve
 Sympathetic plexus

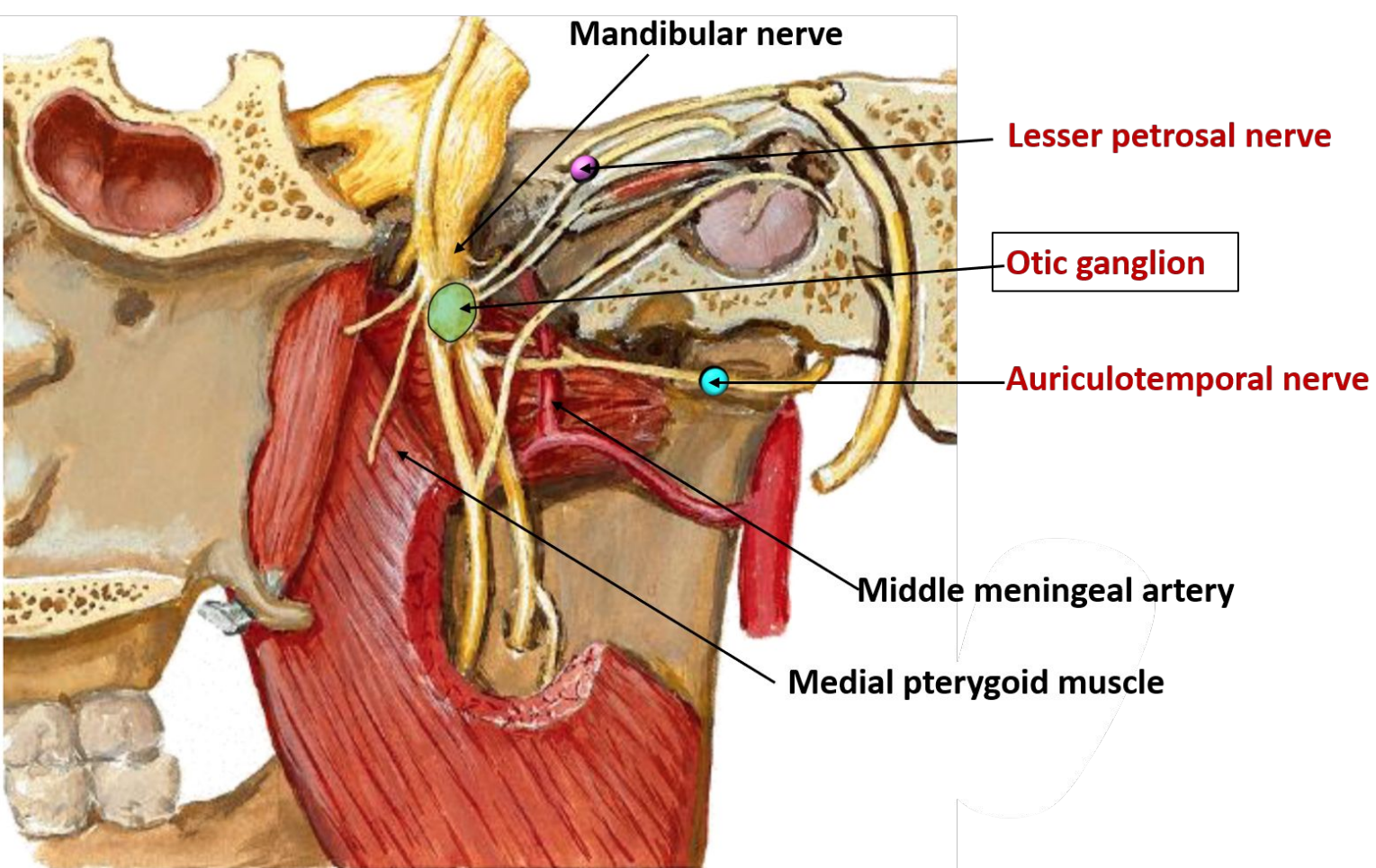
Facial nerve
 Middle meningeal artery
 Inferior alveolar nerve
 Inferior alveolar artery
 External carotid artery

Buccinator
 Lingual nerve

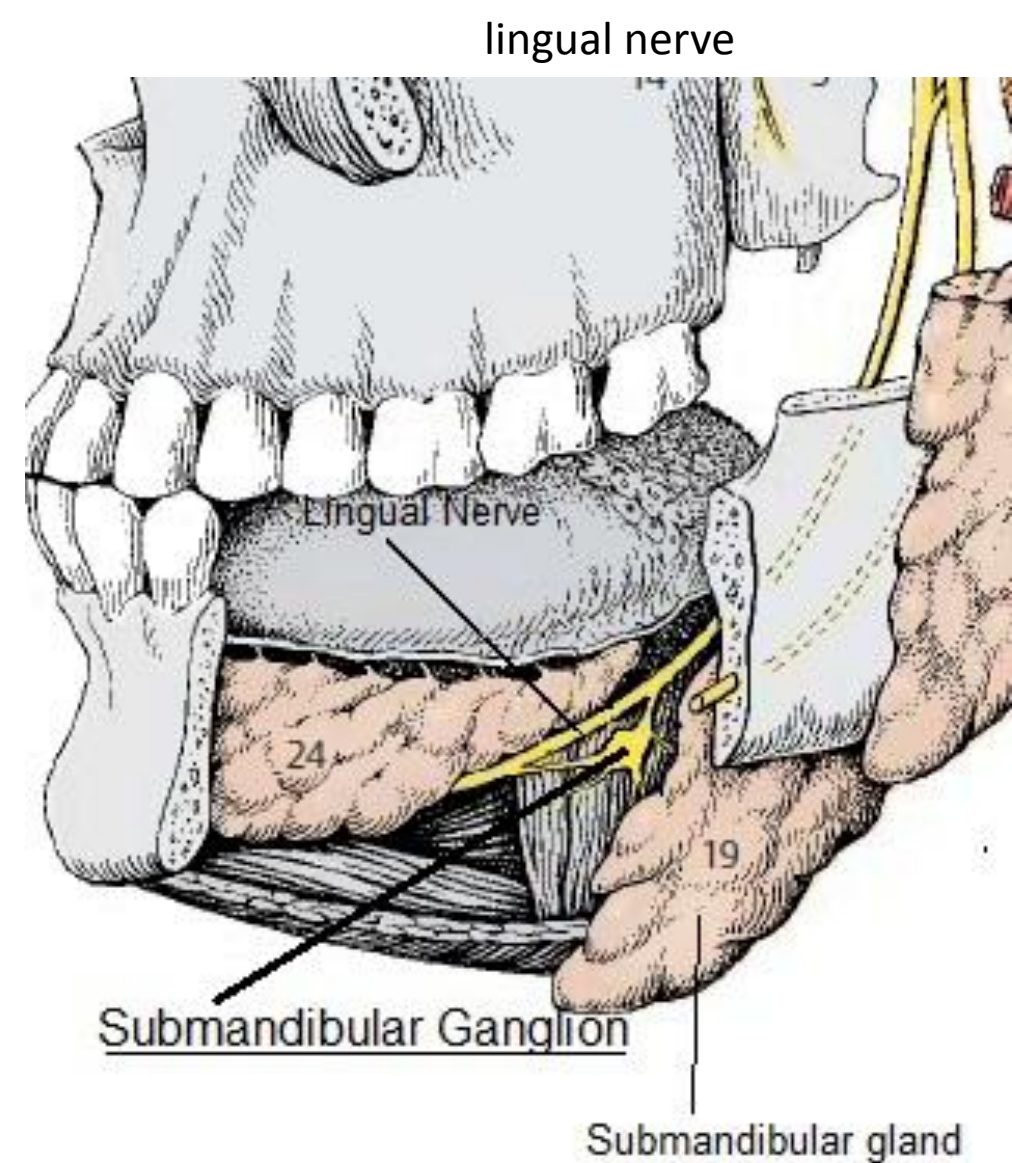
Superior constrictor of pharynx (retracted downward)
 Medial pterygoid

Mylohyoid artery
 Mylohyoid nerve
 Mylohyoid (cut)





auriculotemporal nerve



Lingual Nerve

- carries general sensory axons + special sensory and autonomic fibers (chorda tympani (CN VII)) – tactile, pain and temperature of tongue + 2/3 anterior taste and mucus membrane lining its undersides.
- autonomic fibers branch - submandibular ganglion (submandibular and sublingual glands).

**MIDDLE
EAR**

**OTIC
GANGLION**



**RAMUS COMMUNICANS OF
OTIC GANGLION
FOR CHORDA TYMPANI
NERVE**

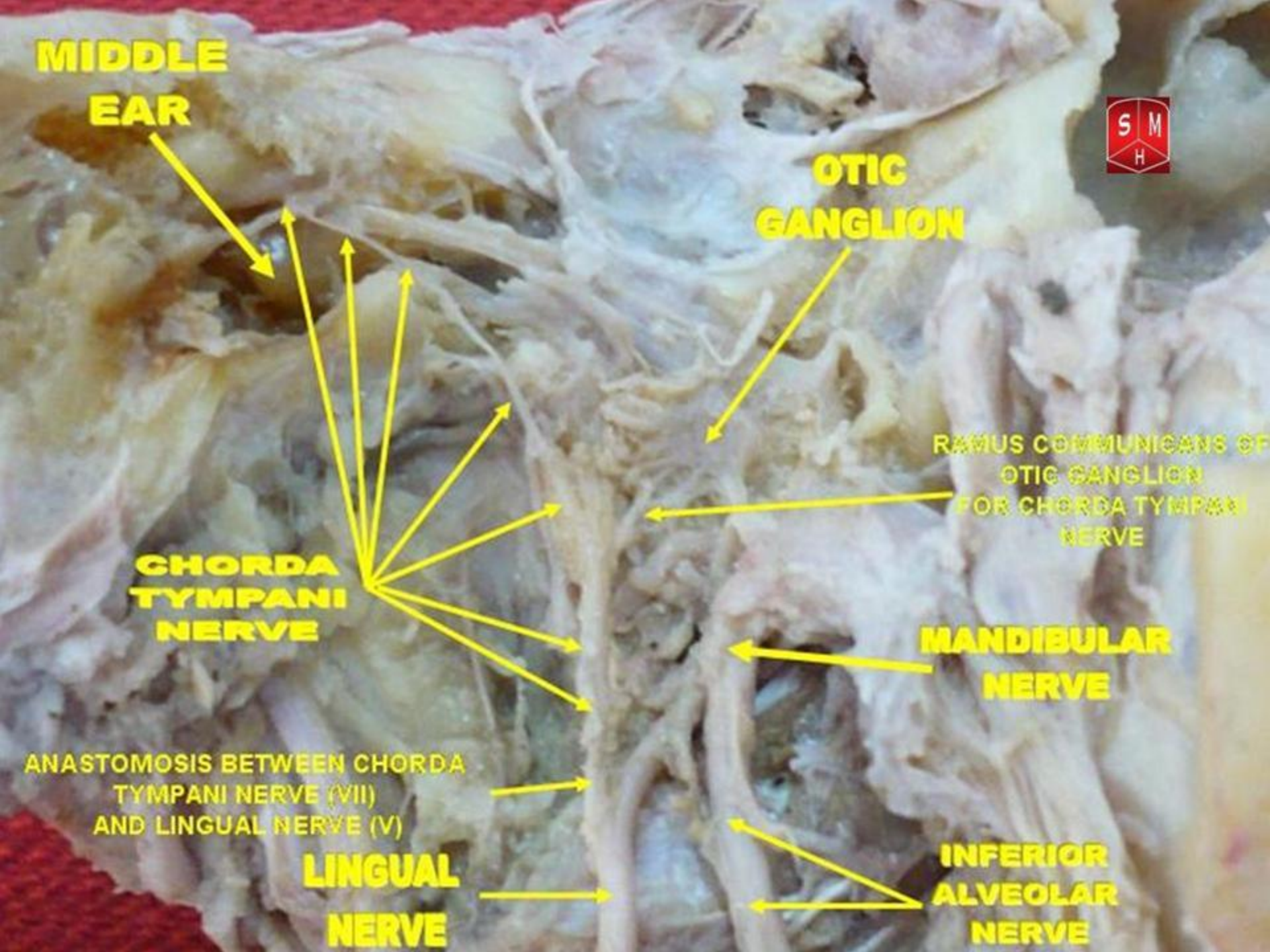
**CHORDA
TYMPANI
NERVE**

**MANDIBULAR
NERVE**

**ANASTOMOSIS BETWEEN CHORDA
TYMPANI NERVE (VII)
AND LINGUAL NERVE (V)**

**LINGUAL
NERVE**

**INFERIOR
ALVEOLAR
NERVE**



**SUPERFICIAL
TEMPORAL
ARTERY**

**LATERAL
PTERYGOID
MUSCLE**

**MAXILLARY
ARTERY**

**ALVEOLAR
INFERIOR
ARTERY**

**ALVEOLAR
INFERIOR
NERVE**

INFRATEMPORAL FOSSA

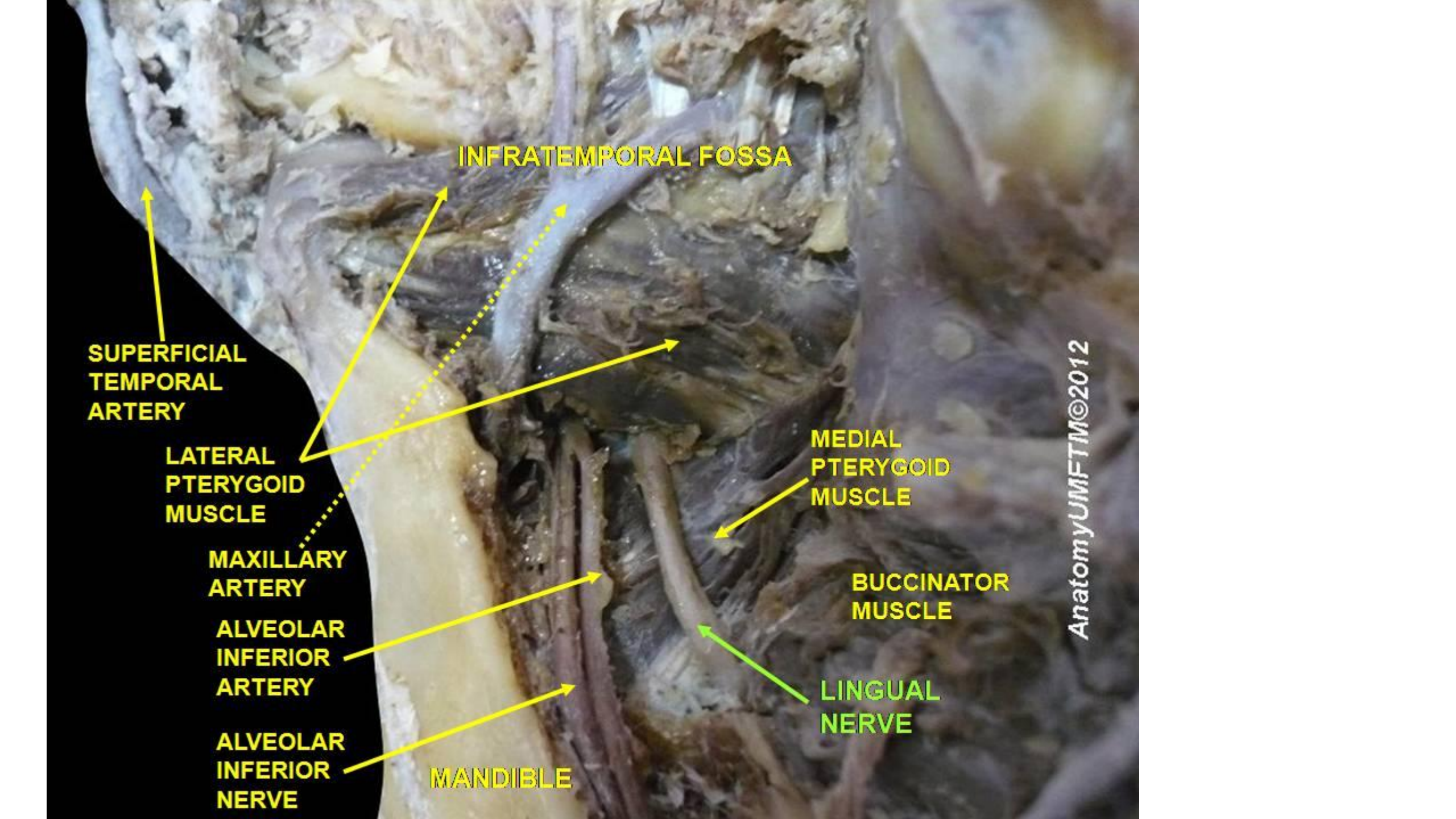
MANDIBLE

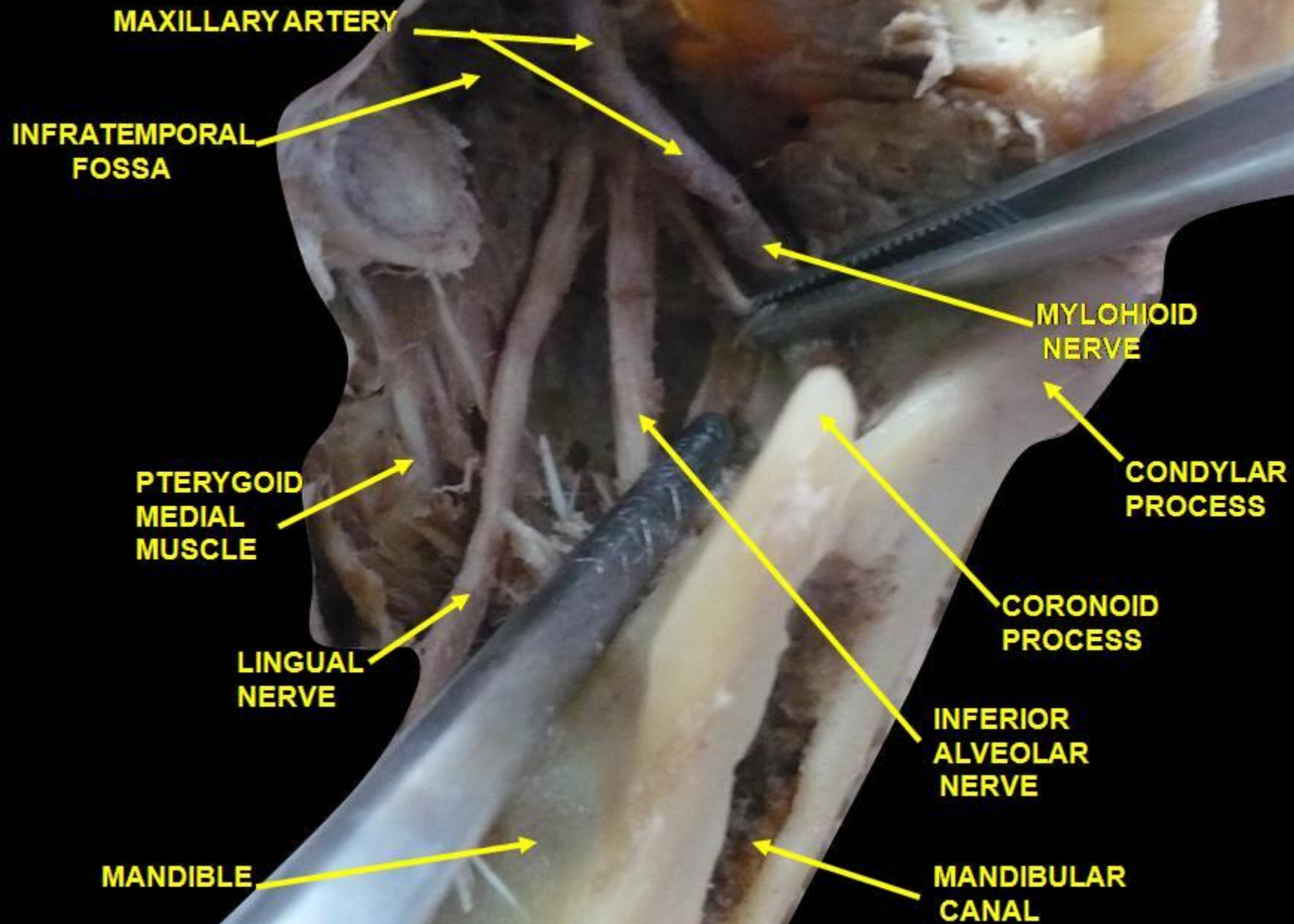
**MEDIAL
PTERYGOID
MUSCLE**

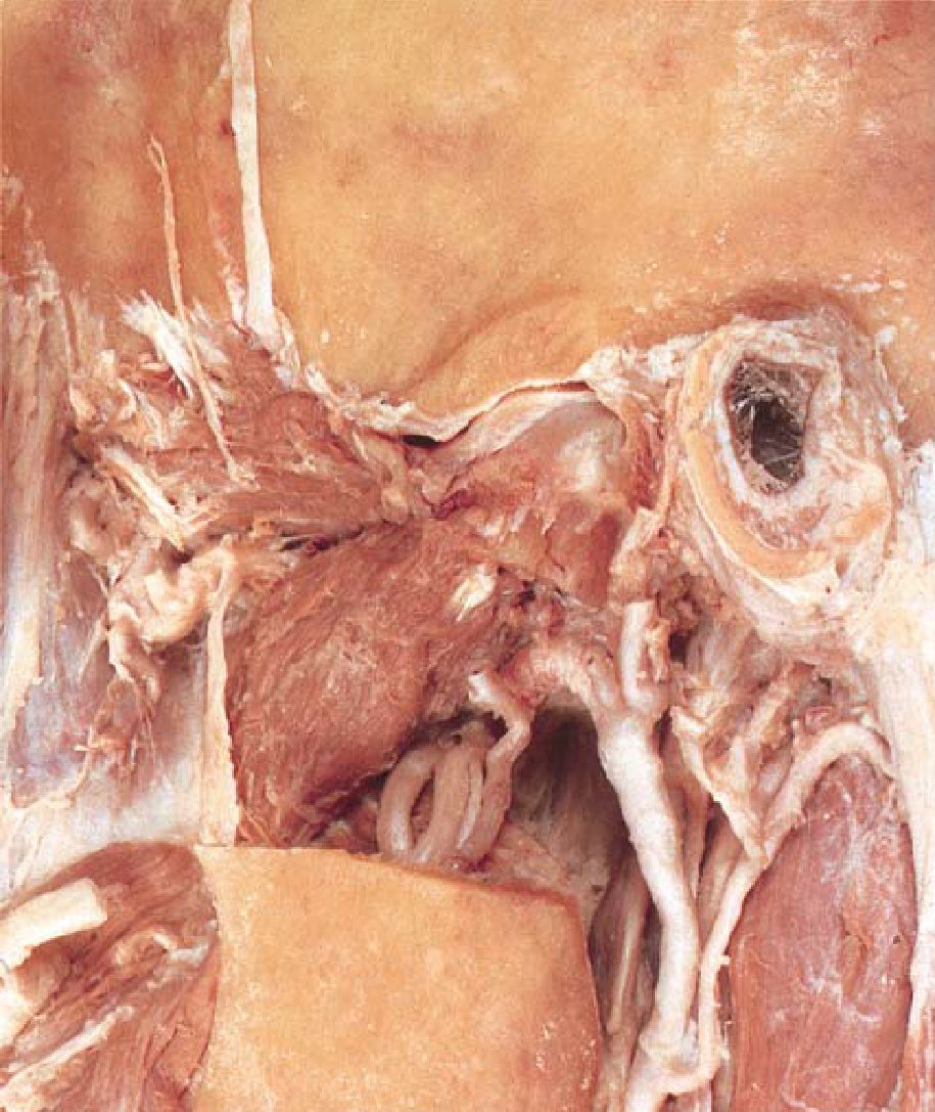
**BUCCINATOR
MUSCLE**

**LINGUAL
NERVE**

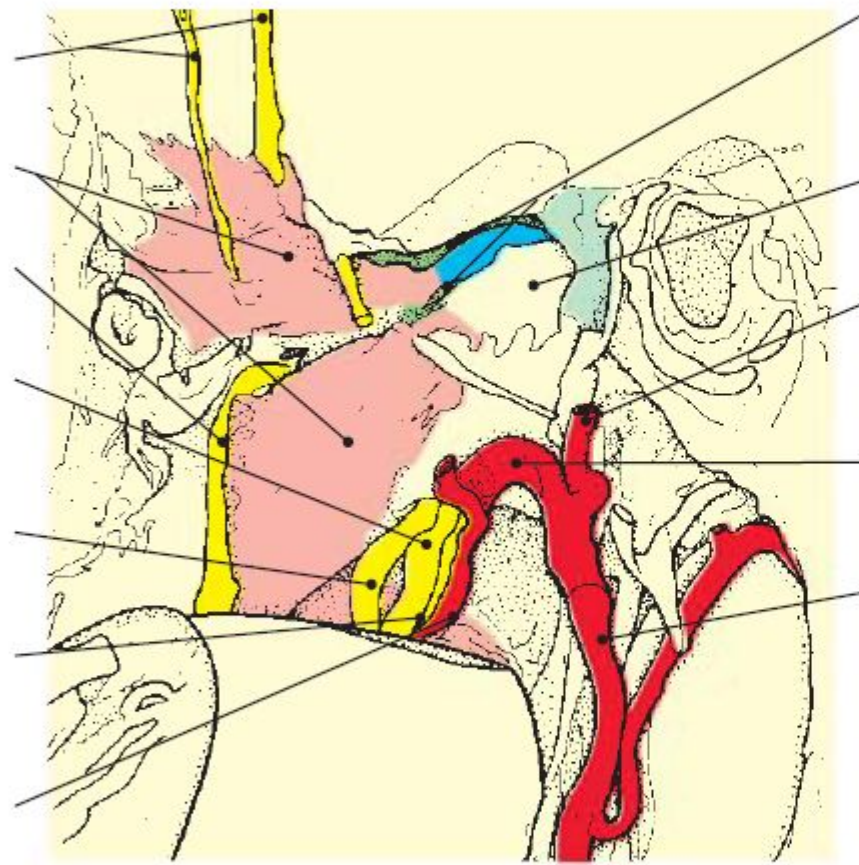
AnatomyUMFTM©2012



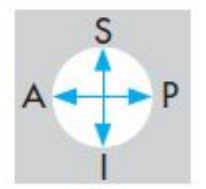


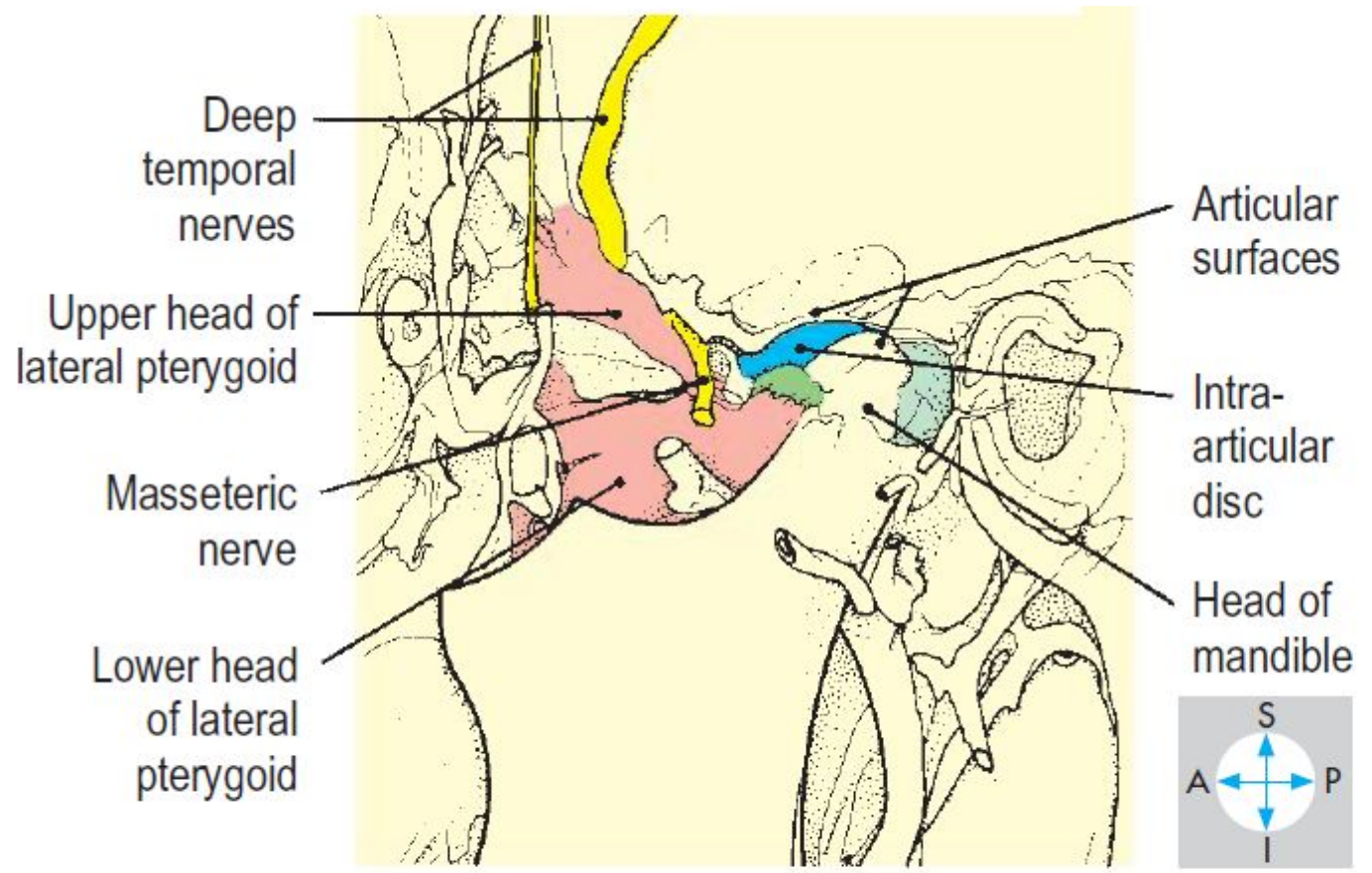
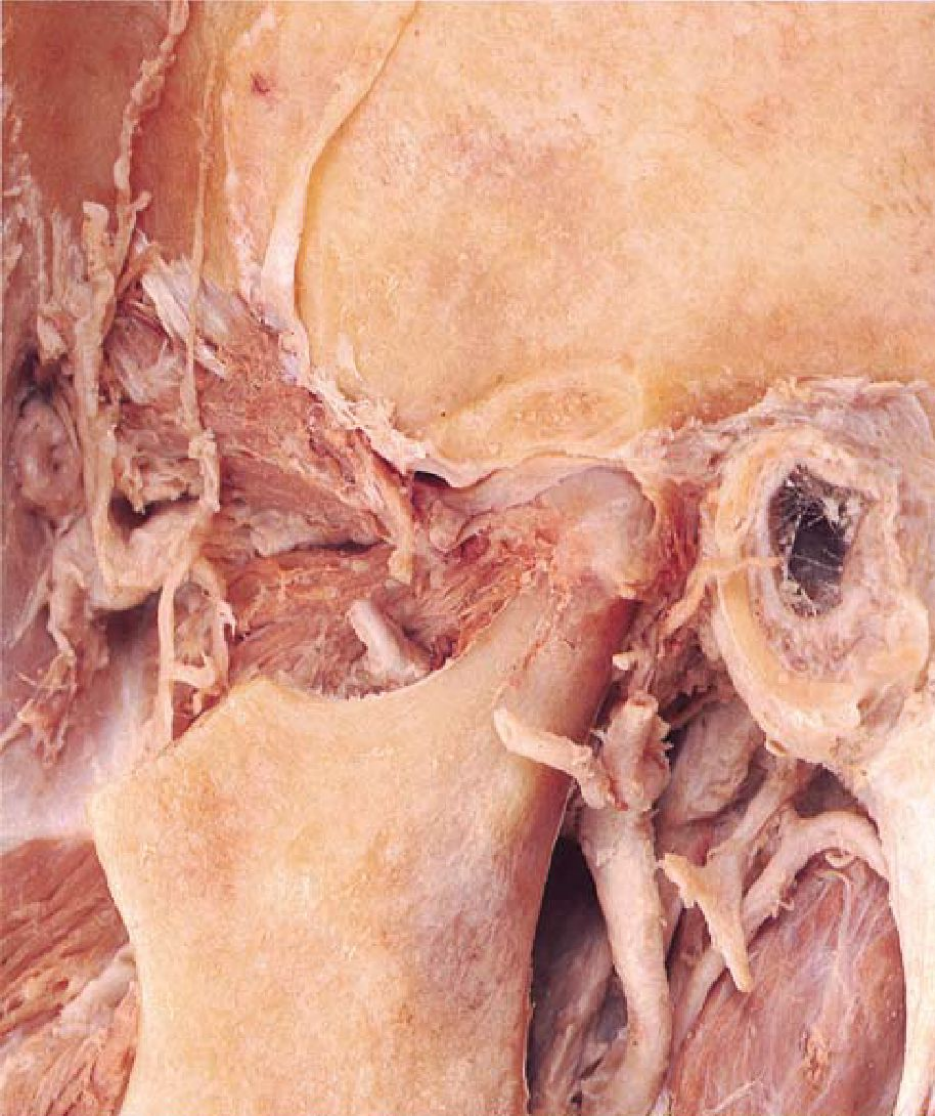


- Deep temporal nerves
- Lateral pterygoid
- Buccal nerve
- Inferior alveolar nerve
- Lingual nerve
- Nerve to mylohyoid
- Inferior alveolar artery

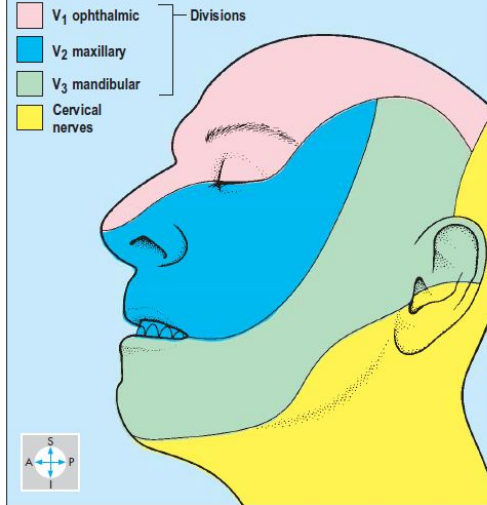
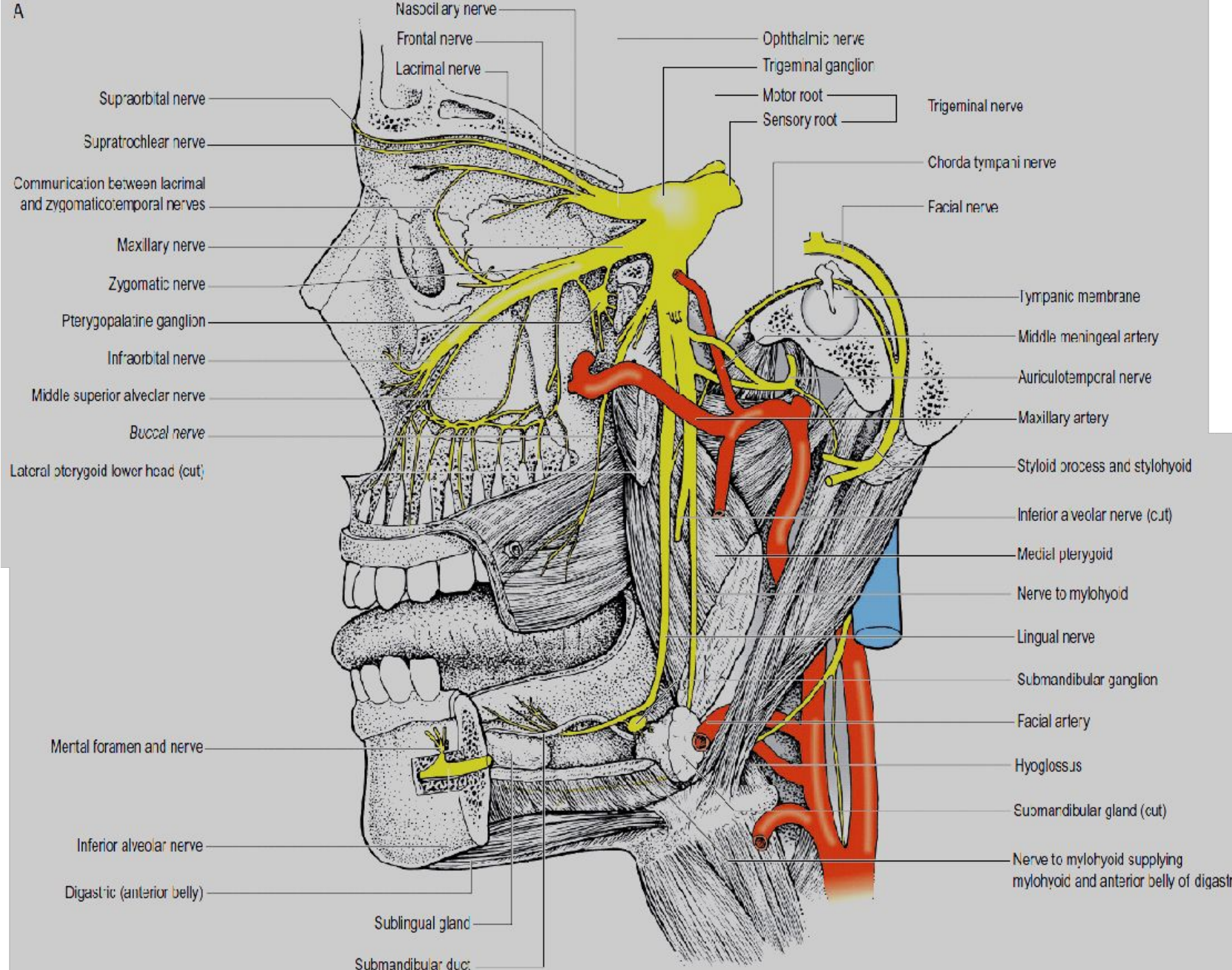


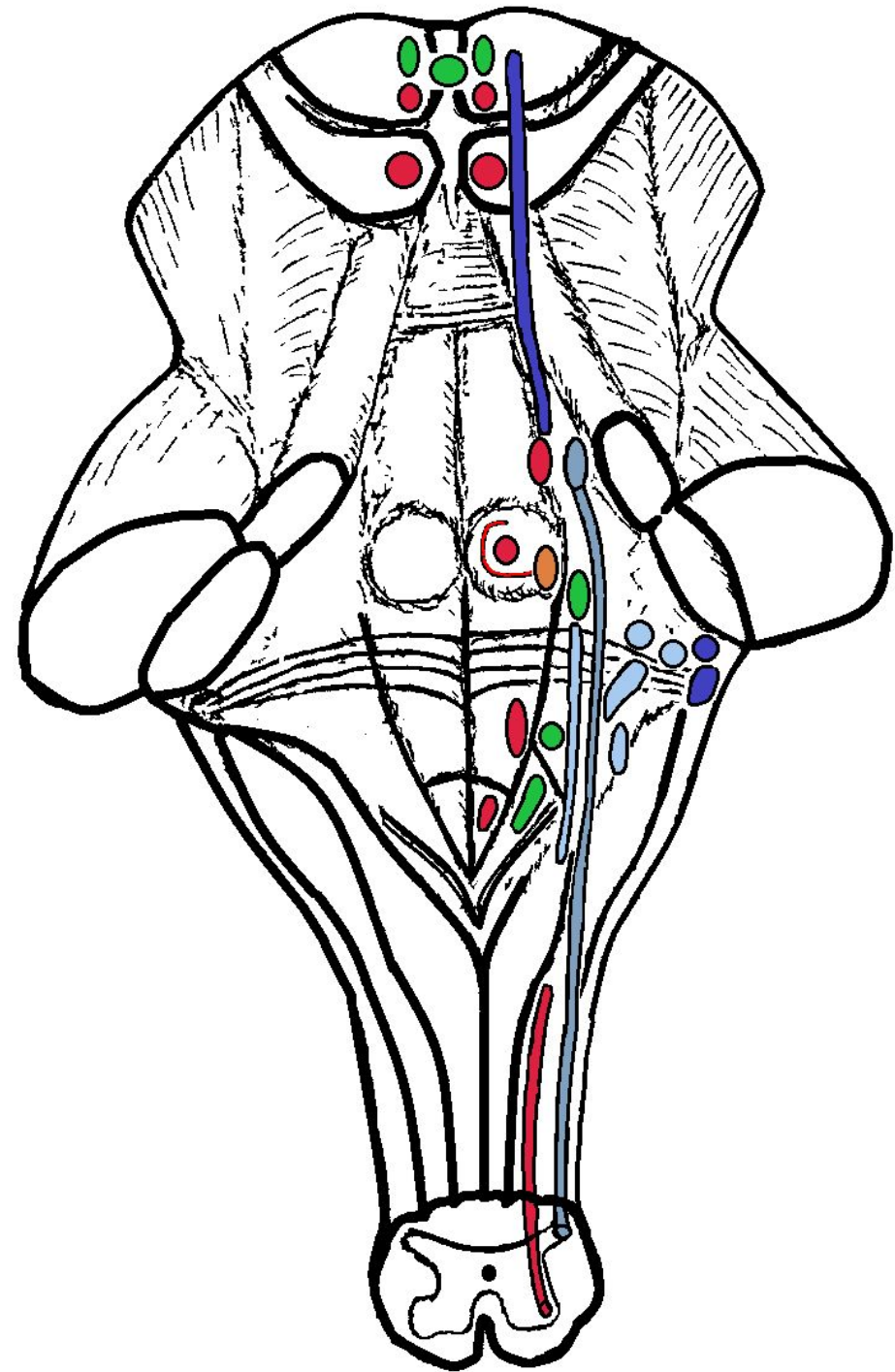
- Upper and lower joint cavities
- Head of mandible
- Superficial temporal artery (cut)
- Maxillary artery
- External carotid artery



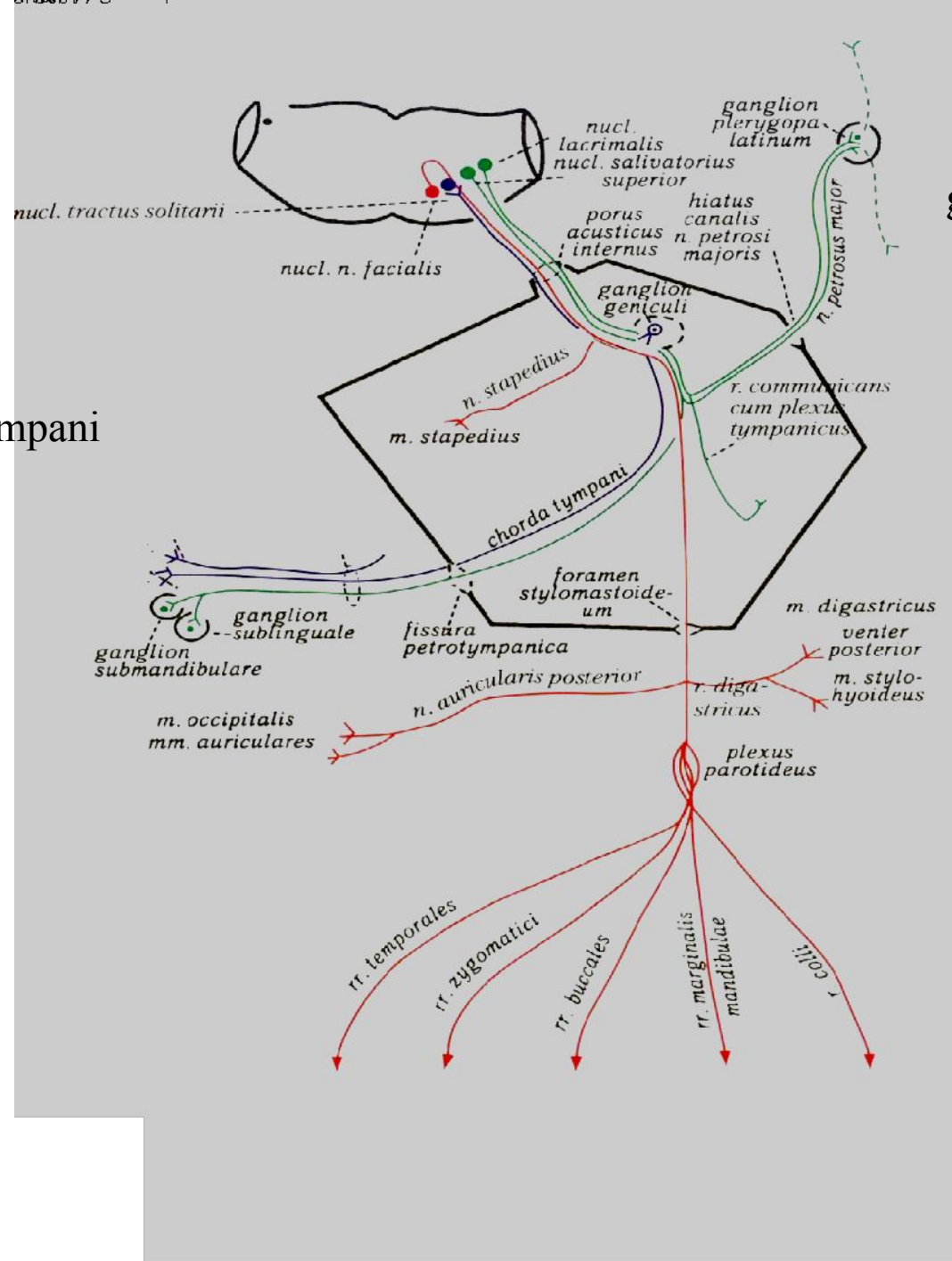


A



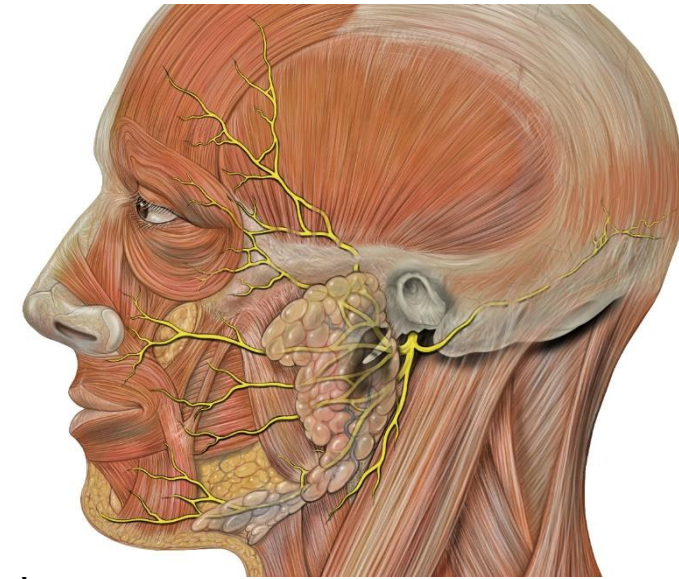


facial nerve

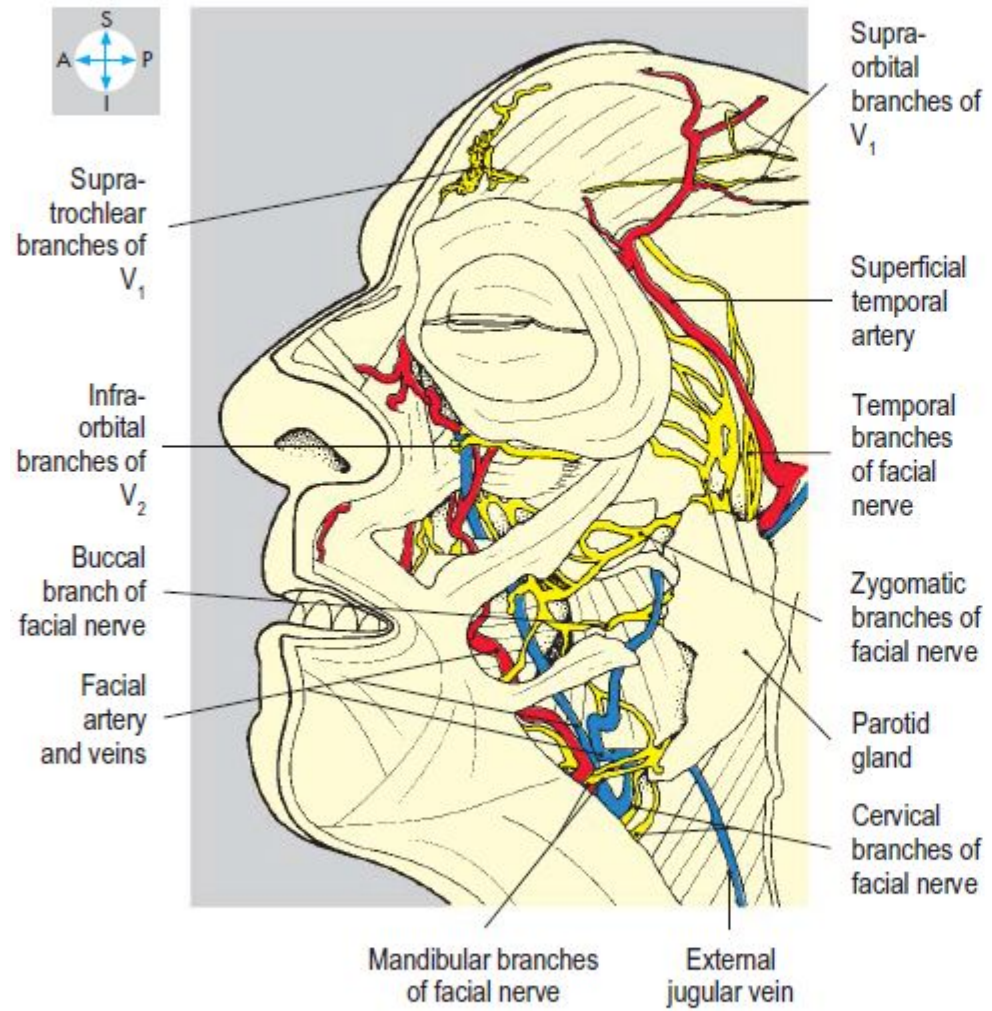
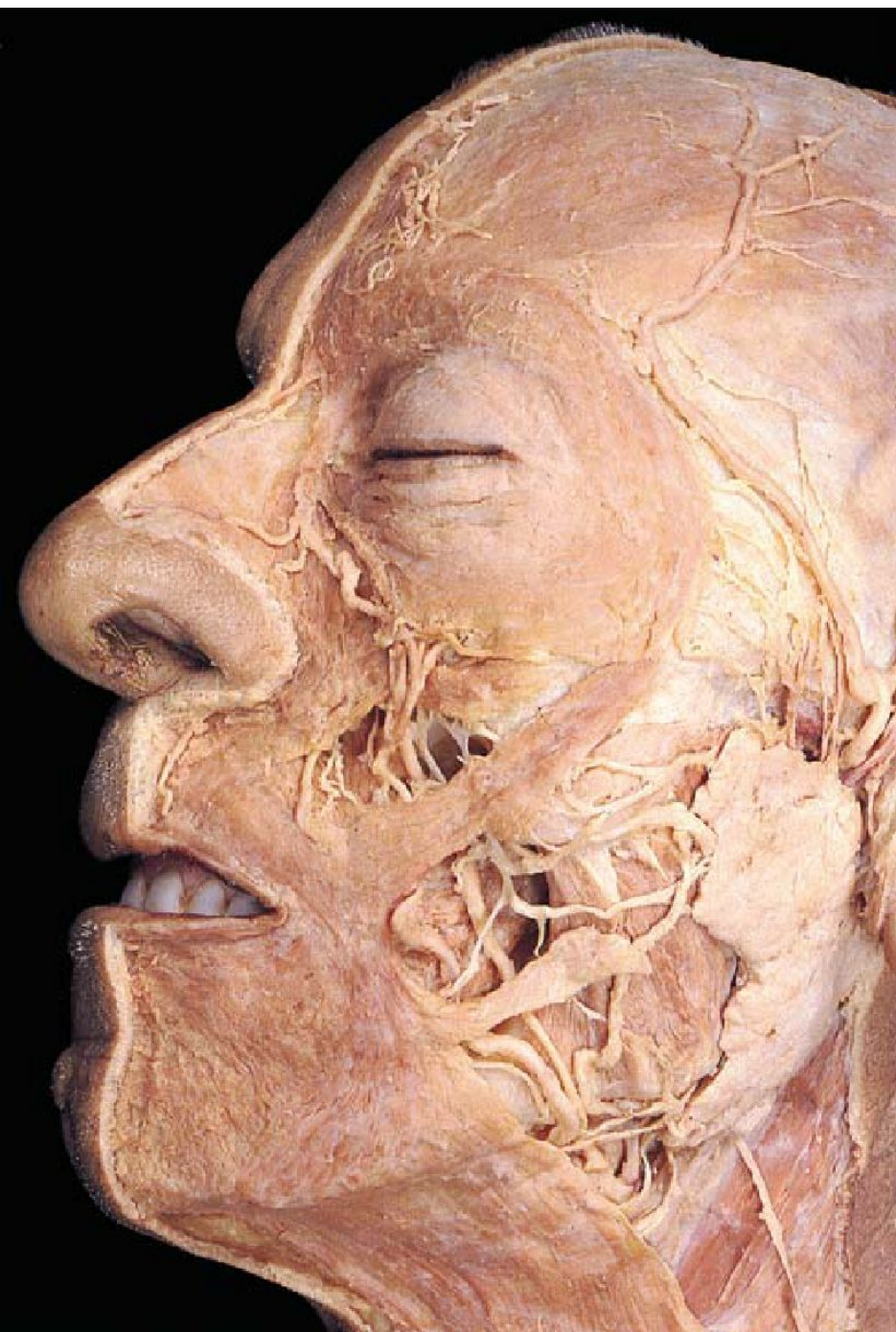


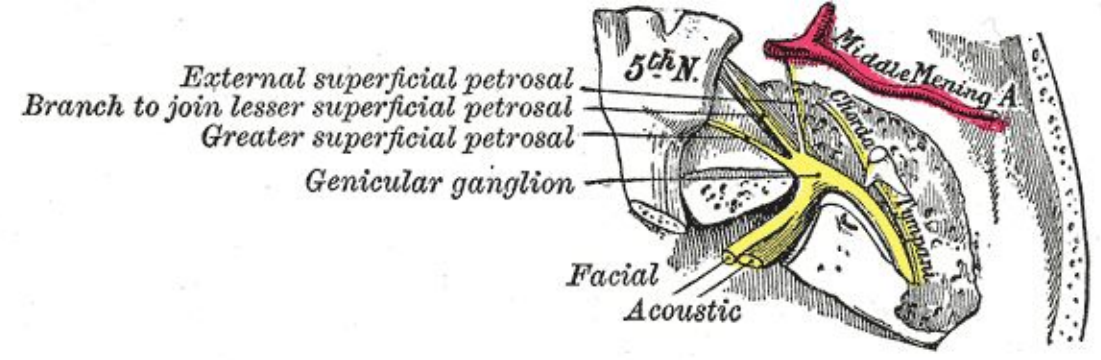
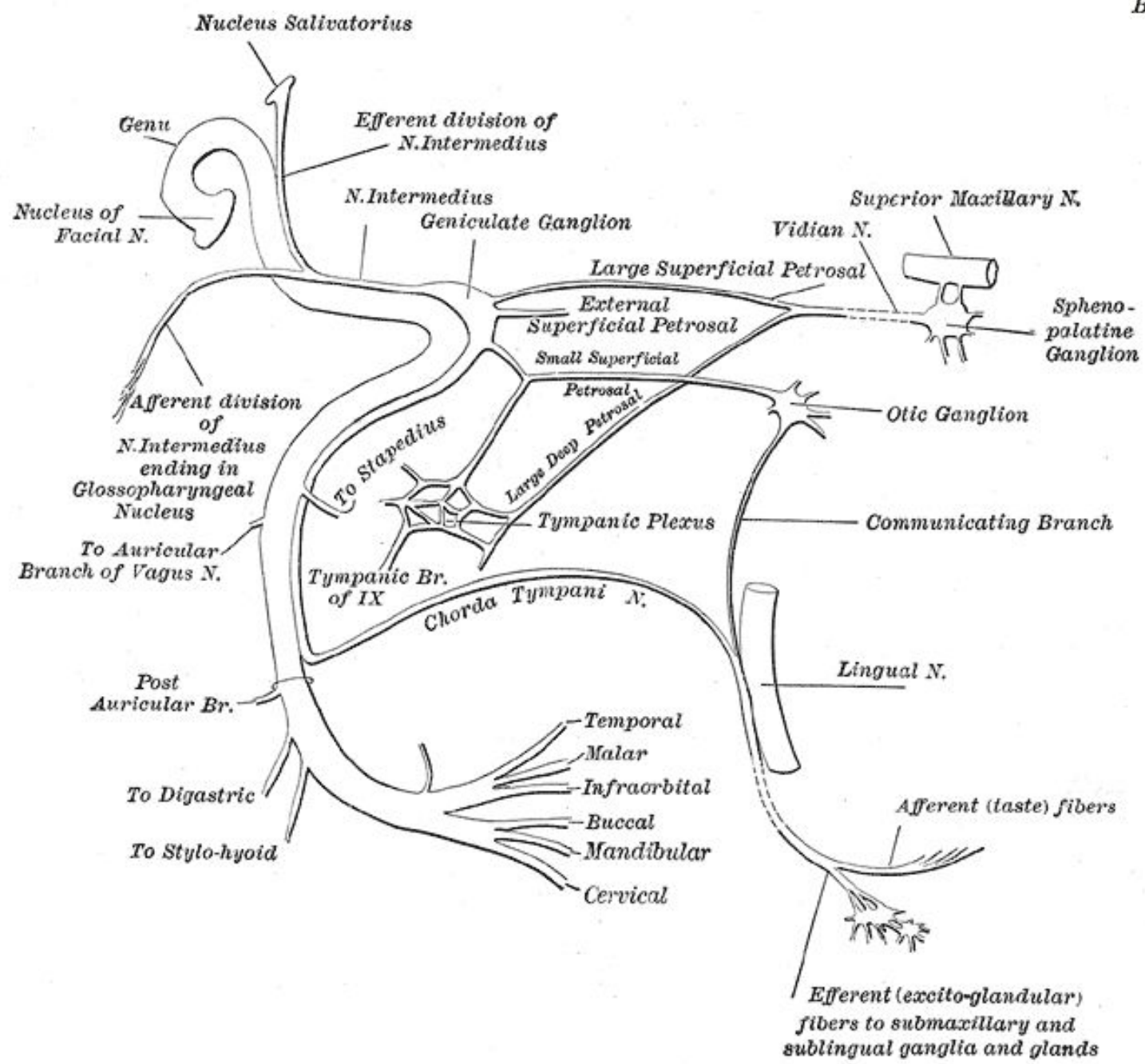
chorda tympani

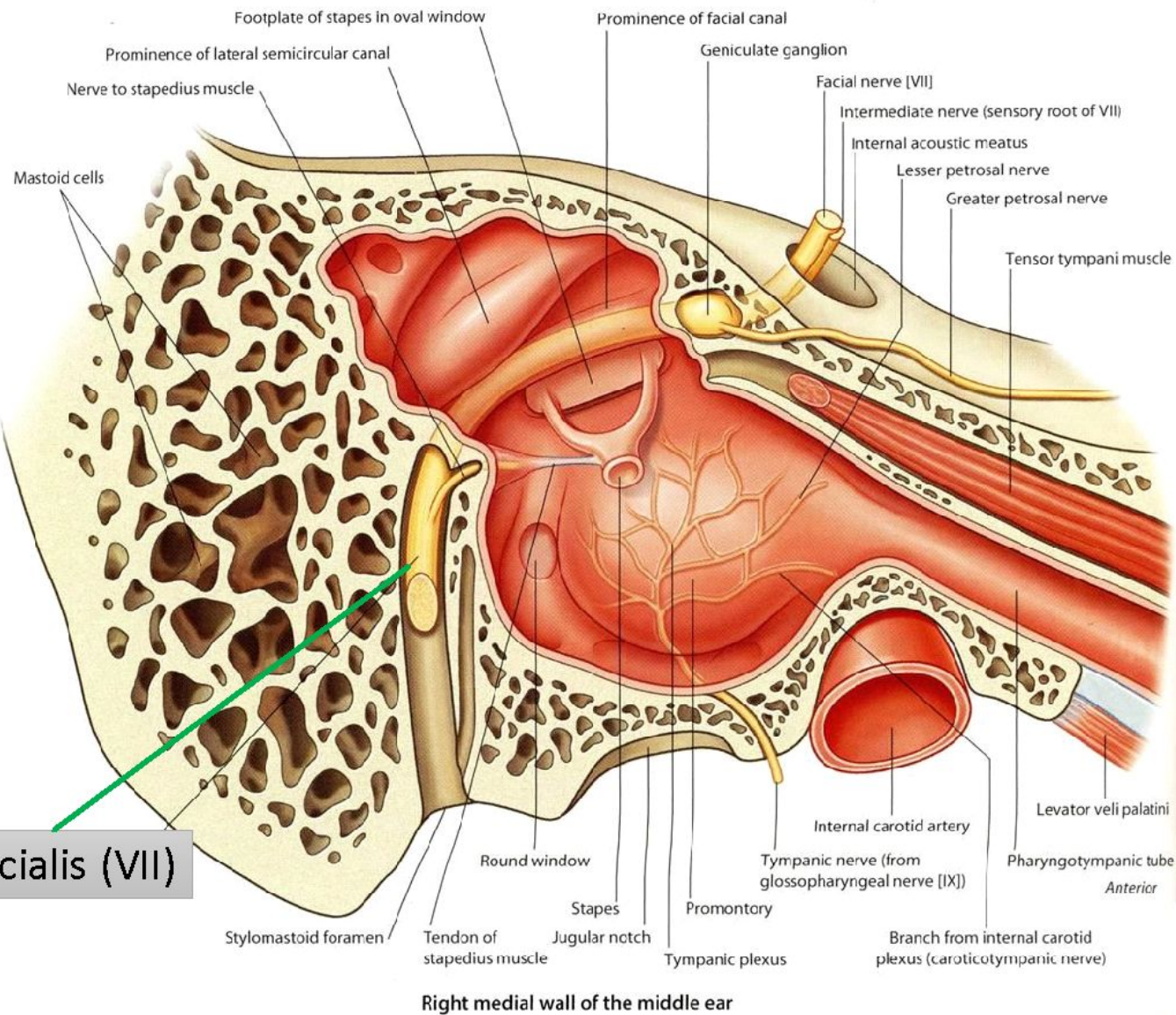
greater petrosal nerve



- n. stapedius
- n. posterior auricular
- digastric branch
- temporal branches
- zygomatic branches
- buccal branches
- mandibular branch
- cervical branch



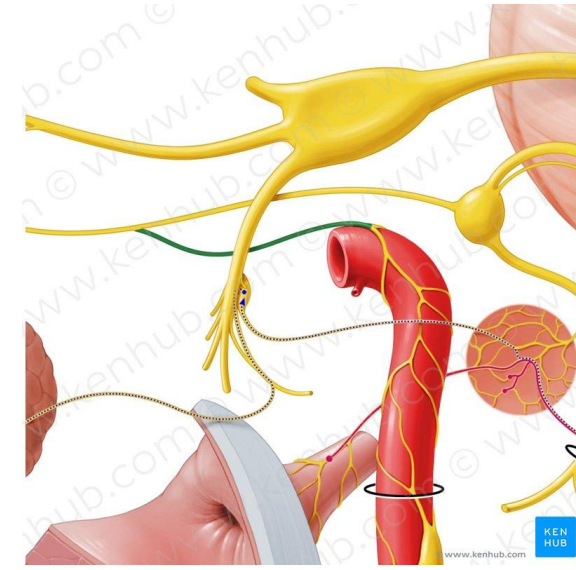
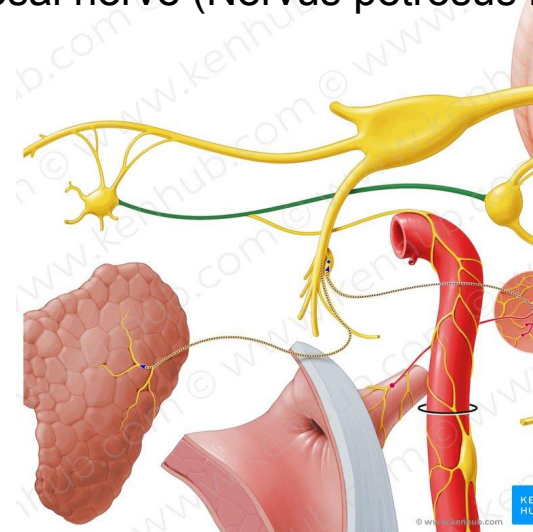
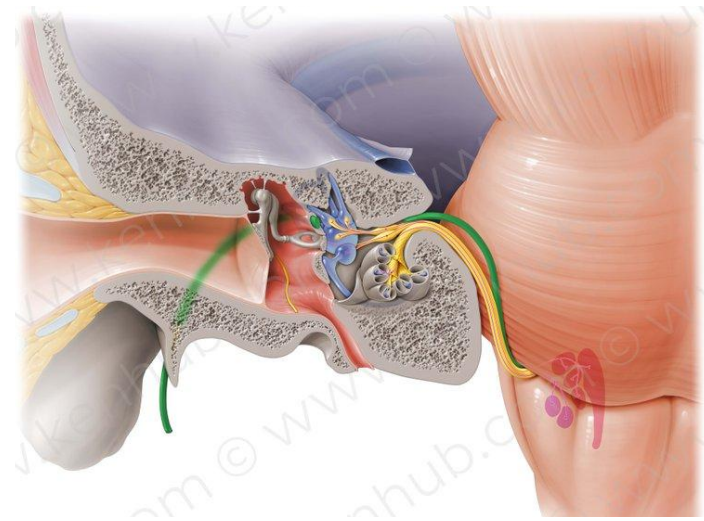




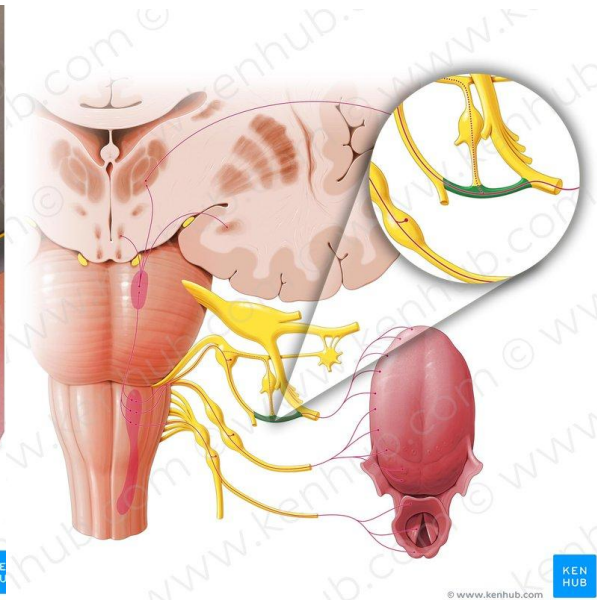
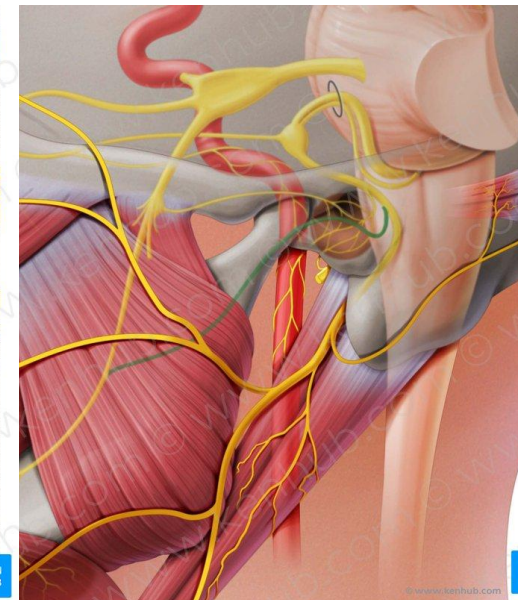
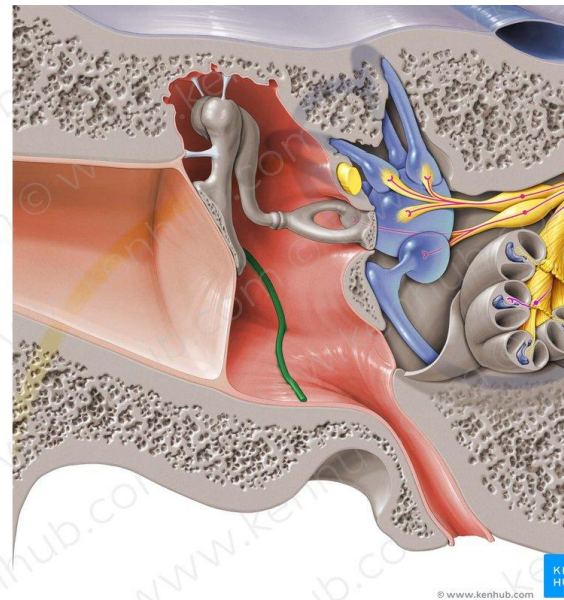
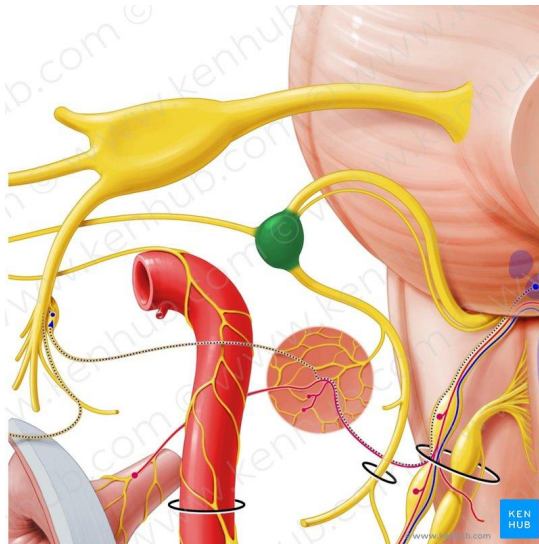
- Intracranial branches
- Greater petrosal nerve
- Communicating branch to the otic ganglion
- Nerve to stapedius
- Chorda tympani
 - Parasympathetic innervation to submandibular gland
 - Parasympathetic innervation to sublingual gland
 - Special sensory taste fibers for the anterior 2/3 of the tongue

n.facialis (VII)

Greater petrosal nerve (Nervus petrosus major)



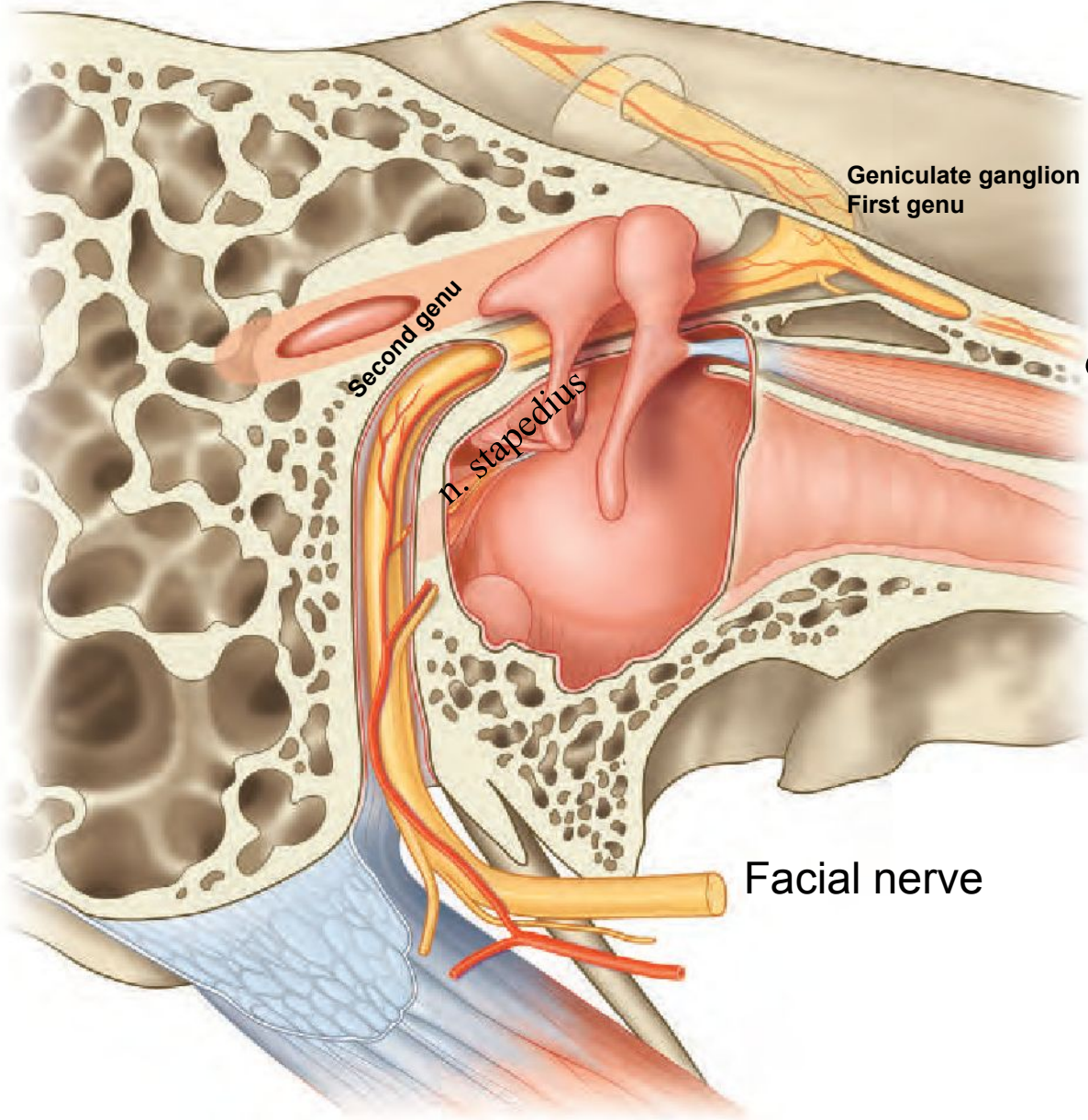
Deep petrosal nerve (Nervus petrosus profundus)



Chorda tympani

Geniculate ganglion (Ganglion geniculi)

Facial nerve



Geniculate ganglion
First genu

Second genu

n. stapedius

Greater petrosal nerve

Facial nerve