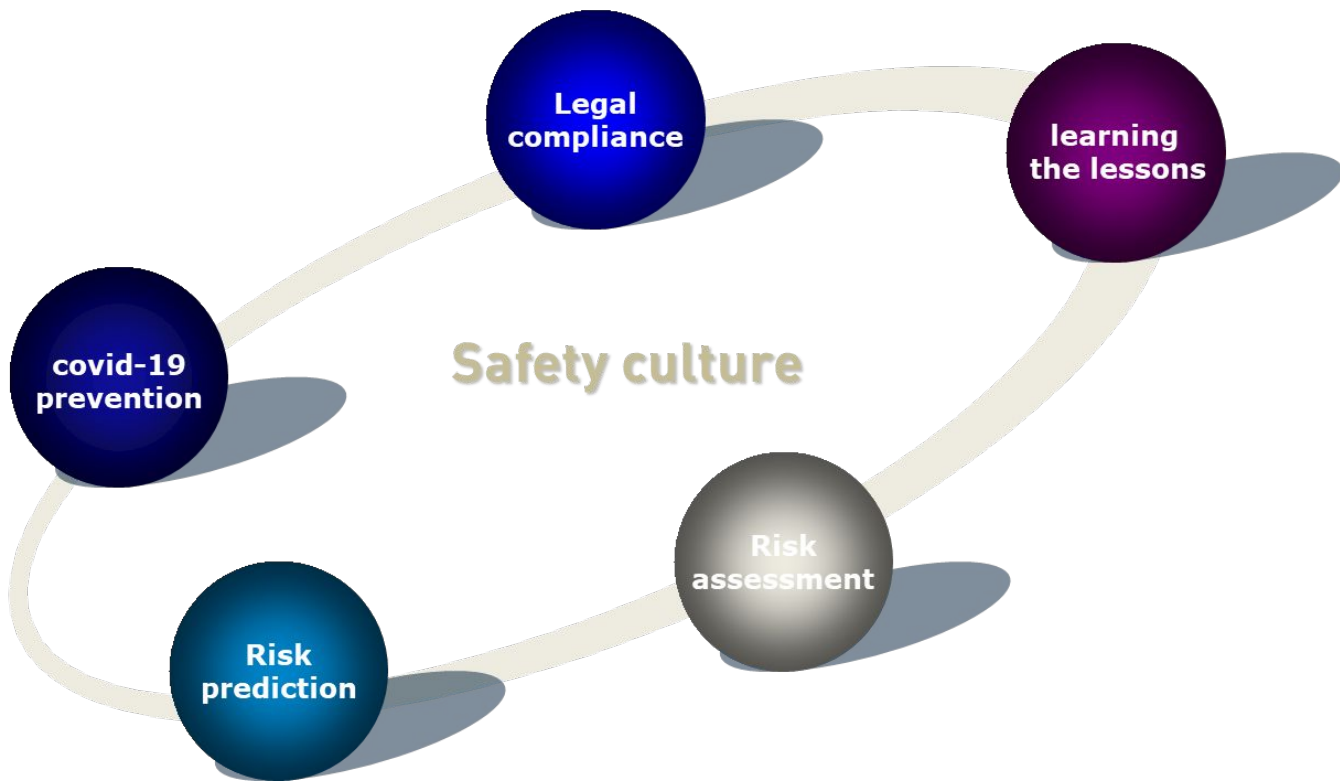


Safety model in Tula



Site WCM plan with YTD status

Area	Description	2018				2019				2020			
		Q1	Q2	Q3	Q4	Q1	Q2	Q3	Q4	Q1	Q2	Q3	Q4
Model (IC)	line 5		FAC										
Model (Foods)	Process Knorr		FAC	FAC									
AA	line 1												
AA	line 2.1												
AA	line 2.2												
AA	line 4												
AA	line 6	FAC								FAC			
AA	line 7												
AA	Packing hall Foods												
A	line 3												
A	line 8	FAC				FAC							
A	wafer area IC					FAC	FAC						
A	mixing area IC					FAC	FAC						
A	Palletization IC												
A	Freezers IC												
A	waste sorting												
A	Process Foods												
B	site territory												
B	Cold store												
B	Raw & Pack						FAC						
B	Factory office												
C	Maintenance												
C	QA lab												
C	R&D												
C	Ammonia												
C	WWTP												
C	Electrical substation												
C	Water treatment												
C	Boiler plant												

We are here now →

- FAC
- step 6
- step 5
- step 4
- step 3



We constantly monitor compliance with 126 key legislative safety standards. We know which specialist should own the standards and at what level thanks to the knowledge matrix. This helps to avoid risks with the law and provide a basic level of security.

Compliance with laws requires paper documents, employee IDs, certificates, and regulations. To quickly find a copy of the desired document, we use a system that can scan text on scans and photos or handwritten documents. This saves a lot of time and allows you to have any document at hand.

search query

Найдено заметок: 39

Евстигнеев

отвечающих всем условиям: содержит слова, начинающиеся на евстигнеев

Найдены заметки с [евстигнеев](#), [евстигнеева](#), [евстигнеева жогло](#), [чалова колбасников оператор](#), [технологической и евстигнеева](#), [каткова куприна панова](#) в [нескольких](#) блокнотах и в [Корзина](#)

от куприн... 05.08.2020

Листы ознако... 04.07.2020

номера телефо... 18.03.2020

Workers Persona... 16.03.2020

телефон ы сотру... 12.03.2020

перечен ь рабо... 14.10.2019

Мумино в Ухлин...

2019 удостоверения протоколы и вкладыши

Добавить метку...

Segoe UI 10

result

search query

Все заметки

Найдено заметок: 22

платформа подкатная

отвечающих всем условиям: содержит слова, начинающиеся на платформа подкатная

Найдены заметки с [платформа](#), [подкатная](#) в [нескольких](#) блокнотах

Эл 1

4 ... 1.4 МВ 1 минута н...

невыполненные... 19.06.2020

Сору of Сору of... 02.12.2019

Сору of Сору of...

В лестницы и приспособления

Добавить метку...

Segoe UI 10

result

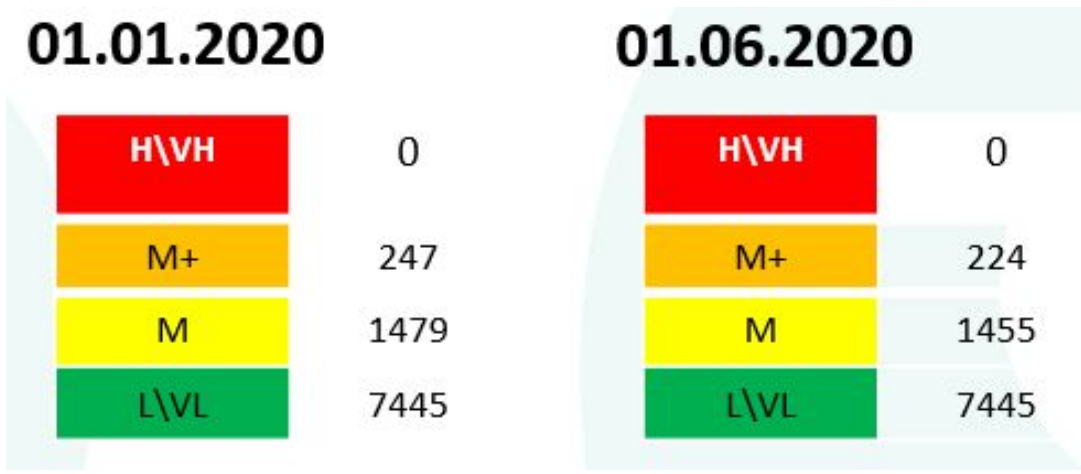


We carefully study the lessons from incidents that occurred earlier on other sites and share our lessons to take countermeasures and prevent a repeat.

Локации	Омск	Тула IC	Тула Foods	СПб Tea	СПб НРС	Екат	Гостомель	Нон - маке
Уроки	А. Донцов	А. Сидорин	А. Сидорин	С. Водяницкий	С. Водяницкий	Е. Масловская	А. Павлов	Г. Лихачева
LTA_Moscow 07022020								
LTA_Konya HPC_19032020								
LTA_Tuzla_04032020								
LTA_Corlu IC_17032020								
MTC_Ekat_02032020								
LTA_Киев НО 18/06/2020								
LTA_Ekat_14062020_Cont Type II								
LL Не классифицировано Екат 02/07/2020								
FAC Киев НО 19/06/2020								
LL Не классифицировано Екат 02/07/2020								
LL_13032020 contractor TULA								
Апрель								
LL 01.04.2020 LTA Incident Besan- EN								
May								
Corlu WH LTA May 2nd 2020								
Konya HPC LL-MTC 05-29-2020								
114572 LL - Algida DD Izmir Cold Store - 20.06.2020 - Kırık Fayansa Basma_Step on Broken Tiles								
114574 LL - Algida DD Istanbul Anadolu Cold Store - 18.06.2020 - Ani Dönüş_Sudden Turn								
116700 LL - Algida DD Istanbul Anadolu Cold Store - 30.06.2020 - Kayarak Düşme_Slip&Fall								
LL-RWC Akko 22.06.2020 EN								
MTC 06.06.2020 CORLU IC								



We regularly re-evaluate risks in order to have the most up-to-date information and take sufficient measures to eliminate them. Also, all employees have the ability to register risks in a special database directly when they are detected. The risk elimination control is carried out personally by the Director at a weekly meeting on Fridays. For each registered risk, the action plan, the time frame for elimination, and the responsible person are specified



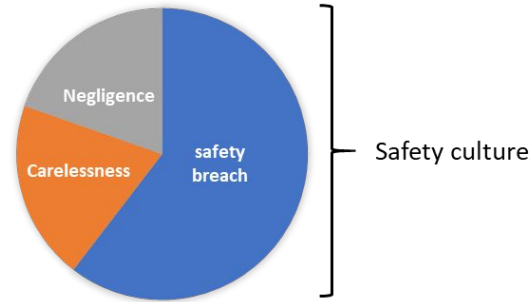
Risk prediction

in 2018, the company's management in Russia announced a competition to implement ideas in the field of security. As a result, the Tula cluster received a grant to implement video Analytics from existing video surveillance cameras

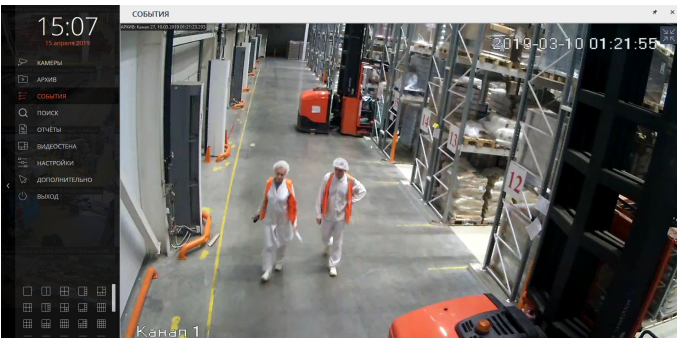
TOP 3 UA:

№	UA	%
1	Violation of marking, being in a dangerous zone	27,4
2	Non-use of security measures	25,6
3	Don't hold on to the handrails	19,4

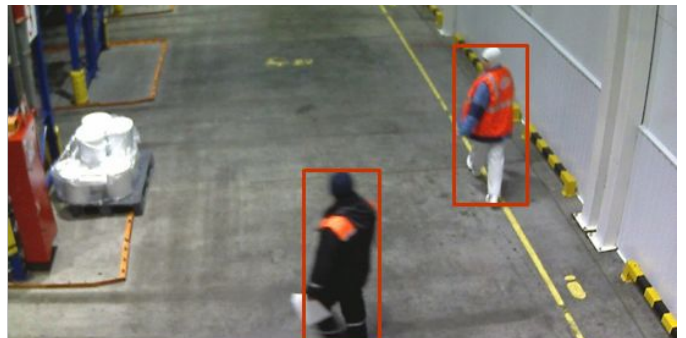
Root cause analysis



No hard hat



violation of the markup



TOP 3 UA (Tula HUB) 2019

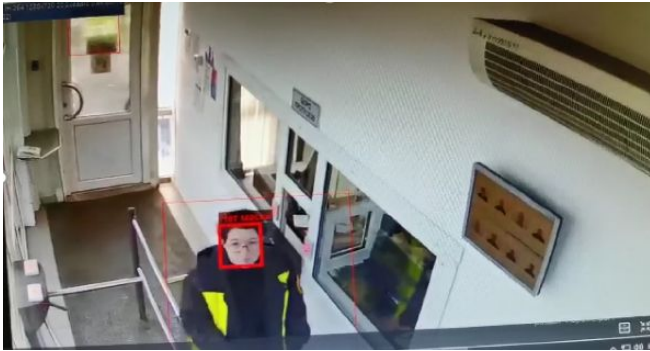




The video surveillance system identifies the absence of PPE on the employee.

Photos with non-compliances are sent to the line managers' mail for action. Also the photos are saved at the site server.

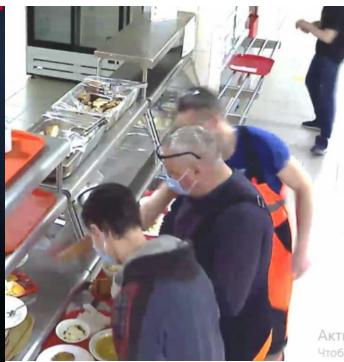
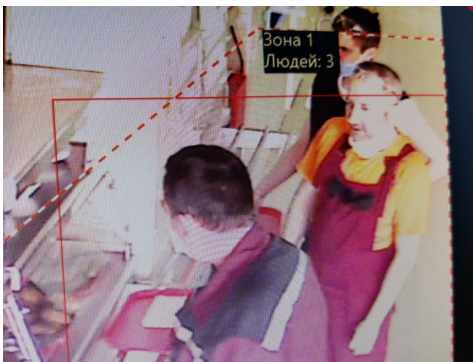
Identification of PPE absence



The video surveillance system identifies the social distance non-compliance.

Photos with non-compliances are sent to the line managers' mail for action.

Also the photos are saved at the site server.



Before

After