

A decorative graphic on the left side of the slide consisting of two overlapping parallelograms. The front one is blue and the back one is a light greenish-blue. Both are tilted at an angle.

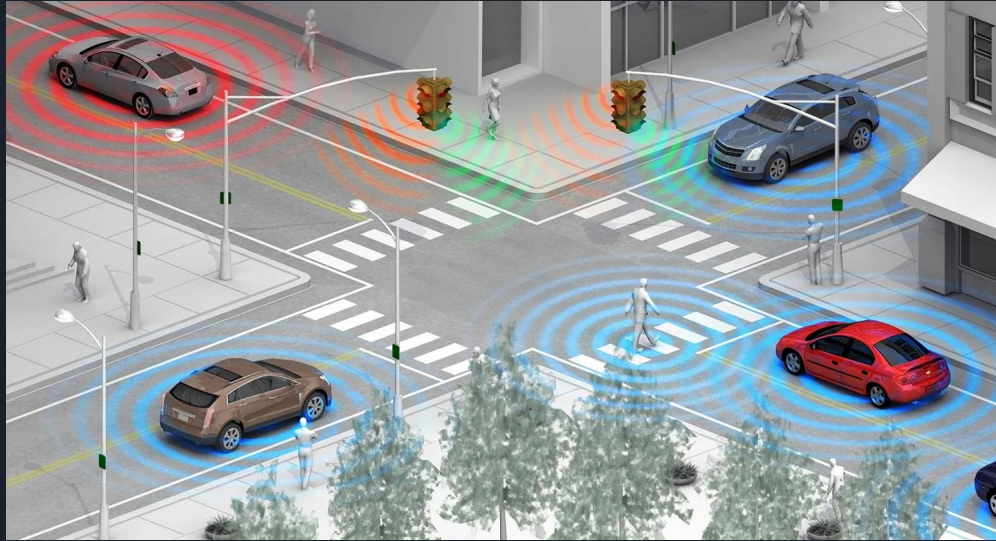
Wireless car's connection



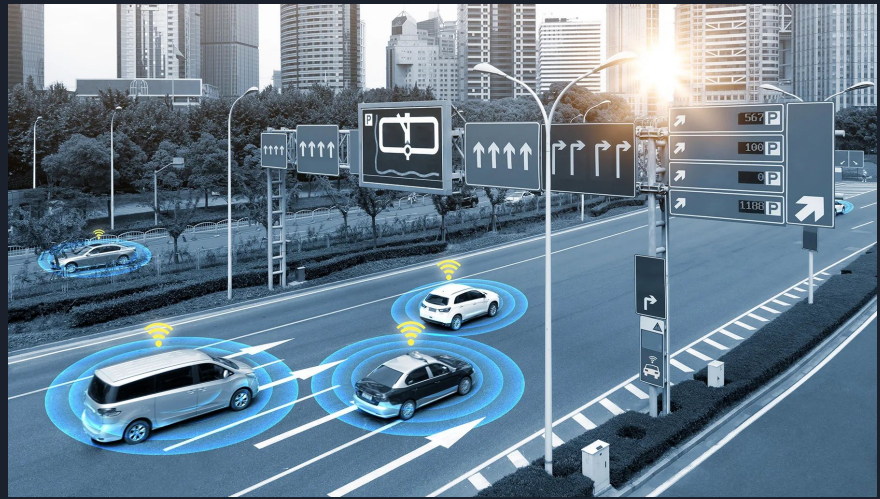
Plan of presentation:

- What is V2V connection?
- What is V2I connection?
- The benefits of these technologies

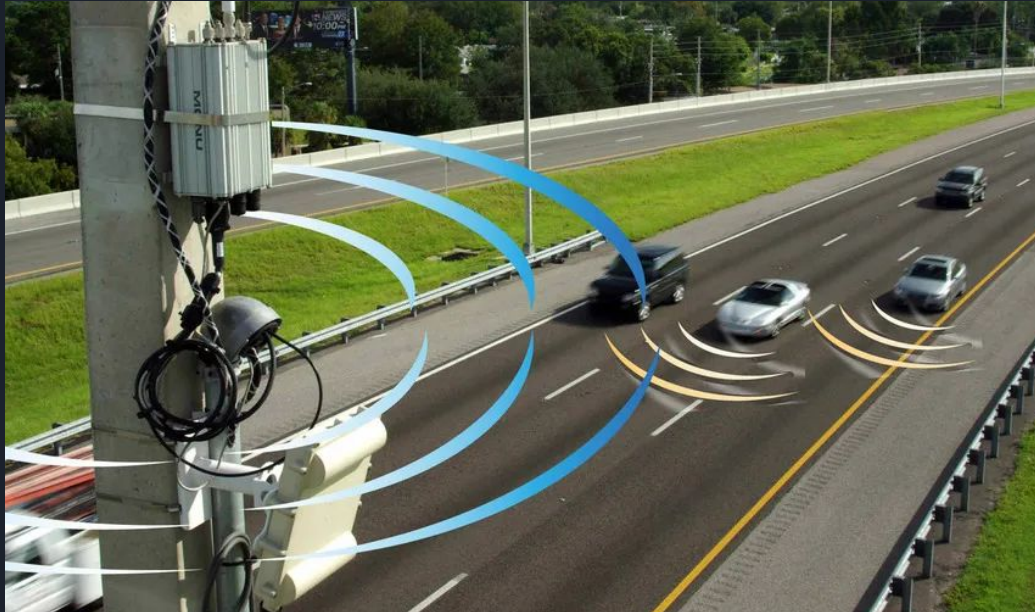
What is V2V connection?



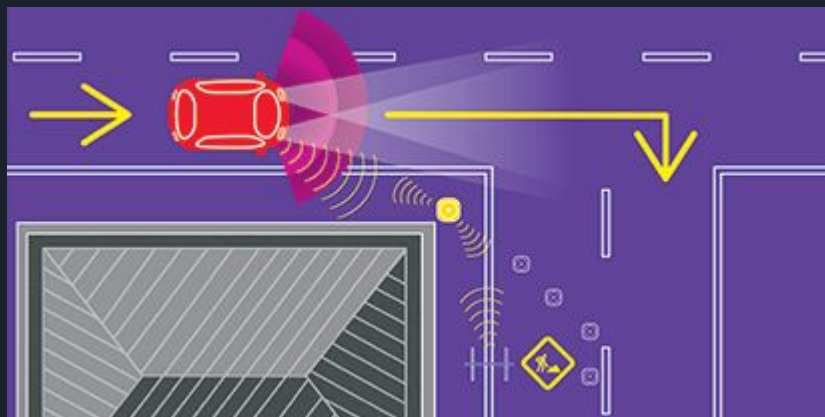
Vehicle-to-vehicle (V2V) communication is communication that enables vehicles to wirelessly exchange information about their speed, location, and heading.



What is V2I connection?



Vehicle-to-Infrastructure (V2I) communication is the wireless exchange of data between vehicles and road infrastructure.





The benefits of these technologies

- Gives a complete picture of the road
- Provide drivers with the tools they need to anticipate potential crashes
- Reduce the number of lives lost each year



**Thank you
for
attention**