

# SR Nexco





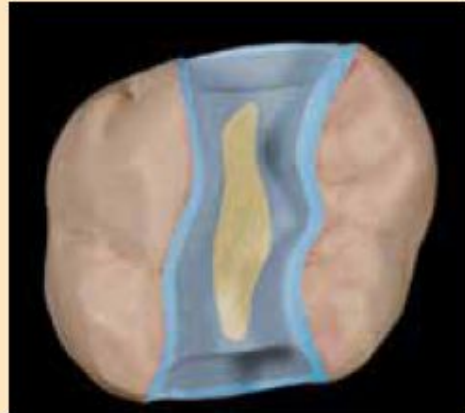
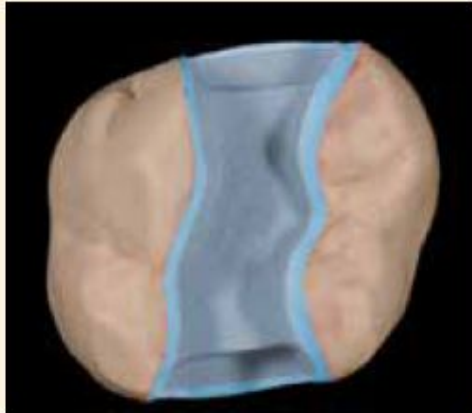
# Параметры полимеризации



Appliance	Manufacturer	Opaquar	Dentin	Liner, Incisal, Effect, Margin	Gingiva	Stains	SR Connect	Final polymerization
Quick Lumamat 100	Ivoclar Vivadent AG	20 s Quick P2/11 min	20 s Quick	20 s Quick	20 s Quick	20 s Quick	P2/11 min	P2/11 min
Spectramat	Ivoclar Vivadent AG	5 min	5 min	2 min	5 min	2 min	2 min	5 min
Labolight LV-III	GC	5 min	2 min	2 min	5 min	2 min	3 min	5 min
Solidilite V	Shofu	3 min	1 min	1 min	3 min	1 min	3 min	5 min
Visio Vario Beta	3M	7 min no vacuum	4x 20 s Visio Alfa	4x 20 s Visio Alfa	4x 20 s Visio Alfa	4x 20 s Visio Alfa	4x 20 s Visio Alfa	4x 20 s no vacuum
HiLite	Heraeus Kulzer	180 s	90 s	90 s	90 s	90 s	90 s	180 s

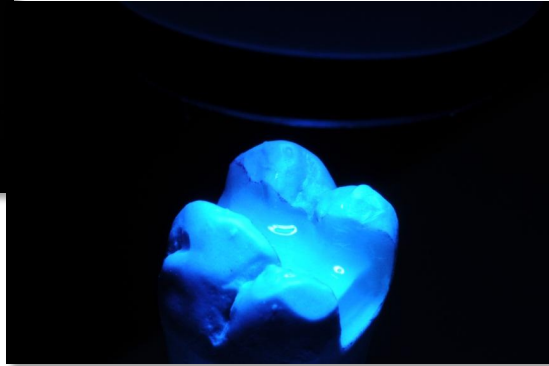
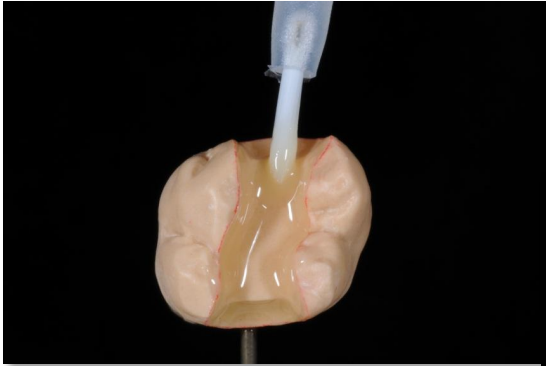


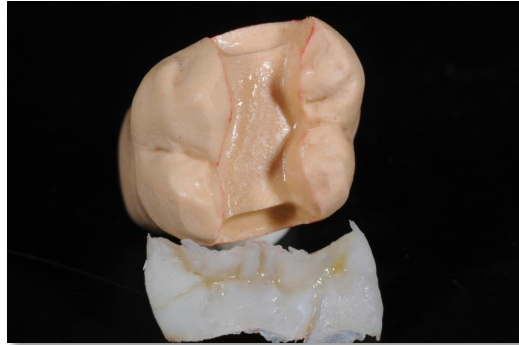
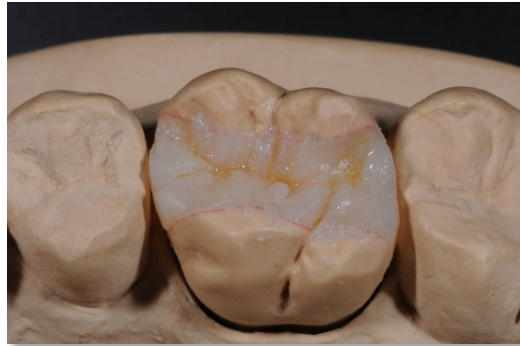
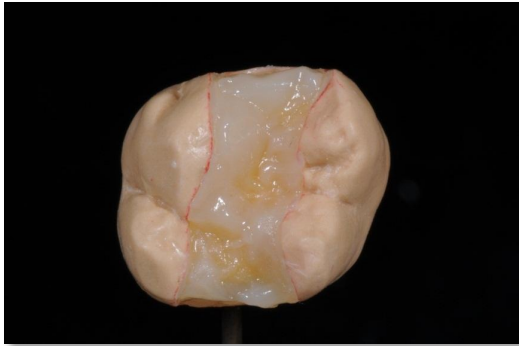
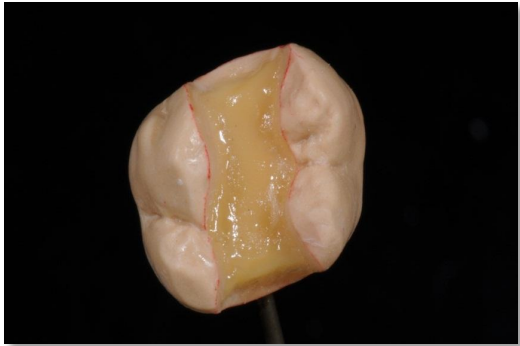
# Микроротезирование





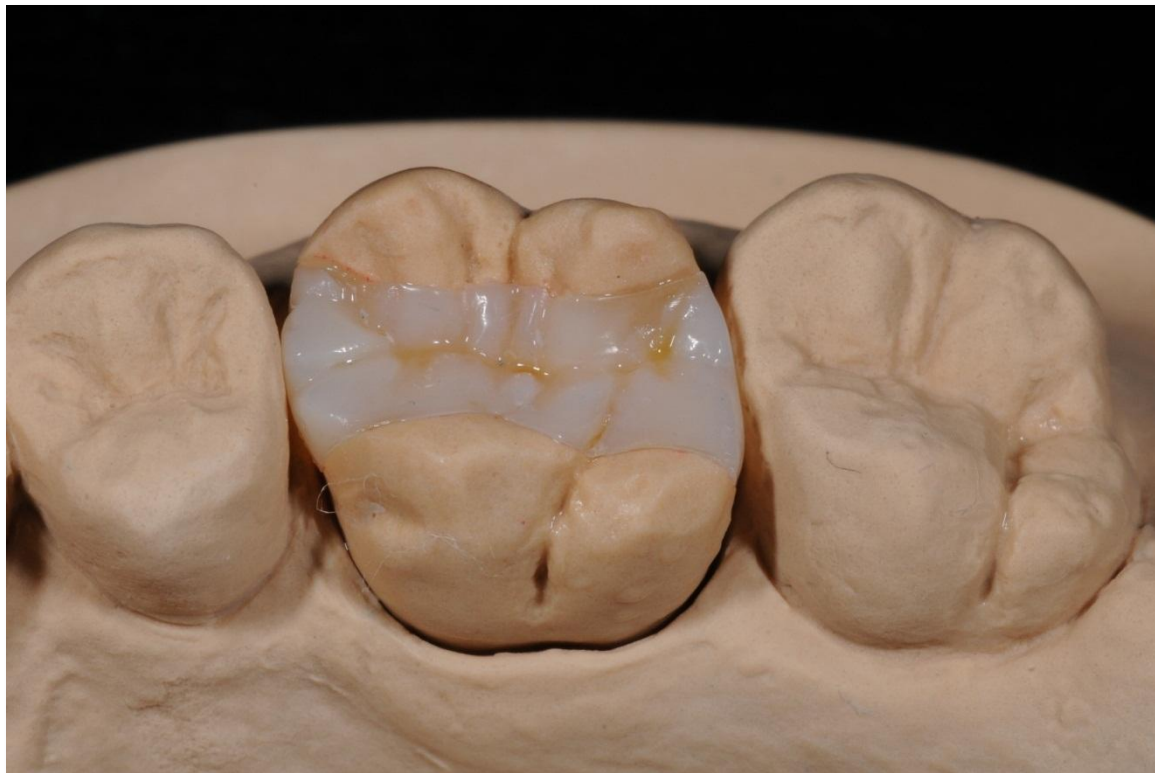
# Liner





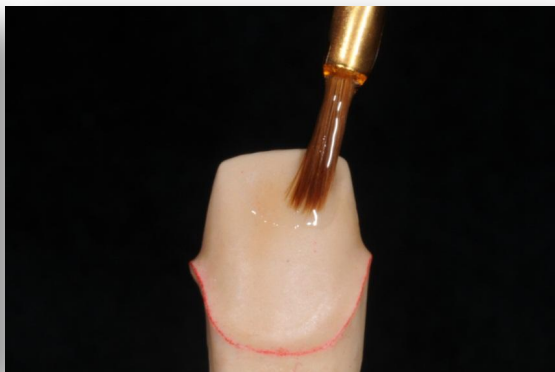


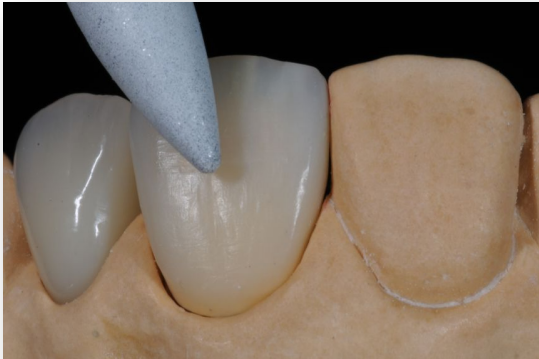
# Результат





# Одиночные коронки







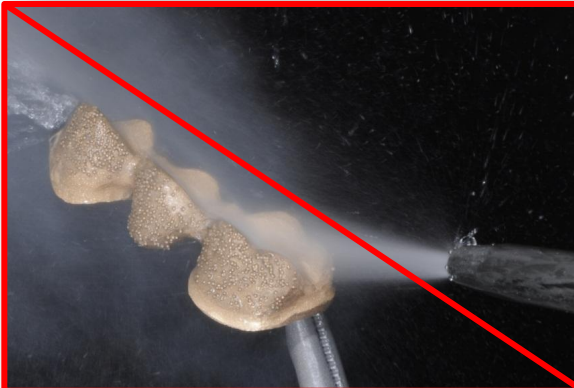


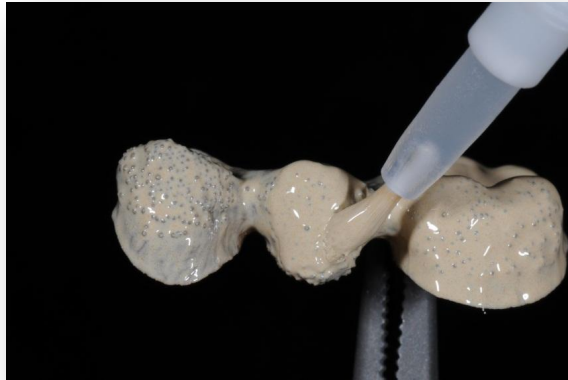
# Результат



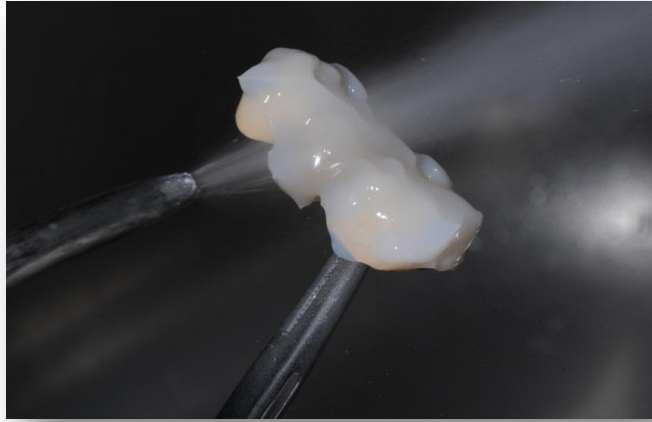


# Облицовка металлических каркасов













# Комбинированная работа









# Opaquer application and layering of the dental portions



First Opaquer layer as wash.



Second Opaquer application in a covering layer.



# Opaquere application and layering of the dental portions



Schichtung der dentalen Anteile mit Dentin-, Effekt- und Incisalmassen



# Opaquer application to veneer the gingival portions



Apply the first Gingiva Opaquer layer (wash) thinly and precure with a Quick curing light.



Entirely cover the gingival area with the second Opaquer layer and polymerize in a Lumamat 100.

Opaquer polymerization	Appliance	Time	Program
Precuring time per segment	Quick	20 s	–
Final polymerization	Lumamat 100	11 min	P2



# Gingiva layering



Apply Basic Gingiva BG34 in combination with IG2 and IG4 as the basic material.



Characterizations with Intensive Gingiva.



# Результат





# Final polymerization



Apply a covering but not inappropriately thick coat of SR Gel and conduct the final polymerization.

Final polymerization	Appliance	Time	Program
Precuring time per segment	Quick	20 s	–
Final polymerization	Lumamat 100	11 min	P2



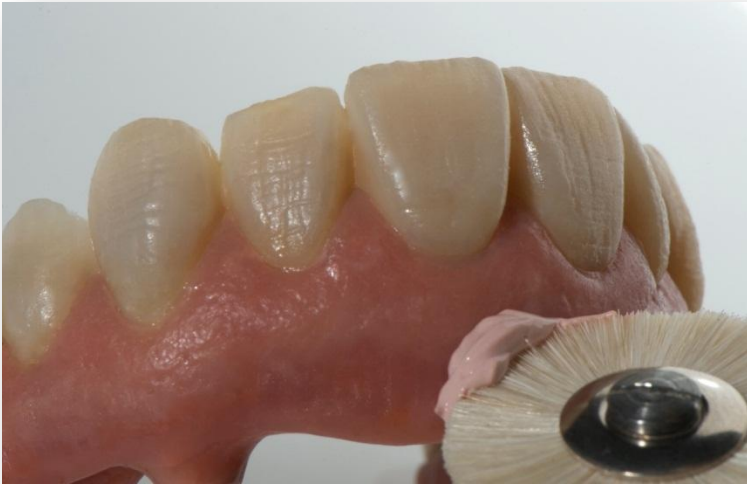
# Finishing



Finish with cross-cut tungsten carbide burs and stippling instruments.



# Polishing



Subsequently, polish with Universal Polishing Paste.





# Result

