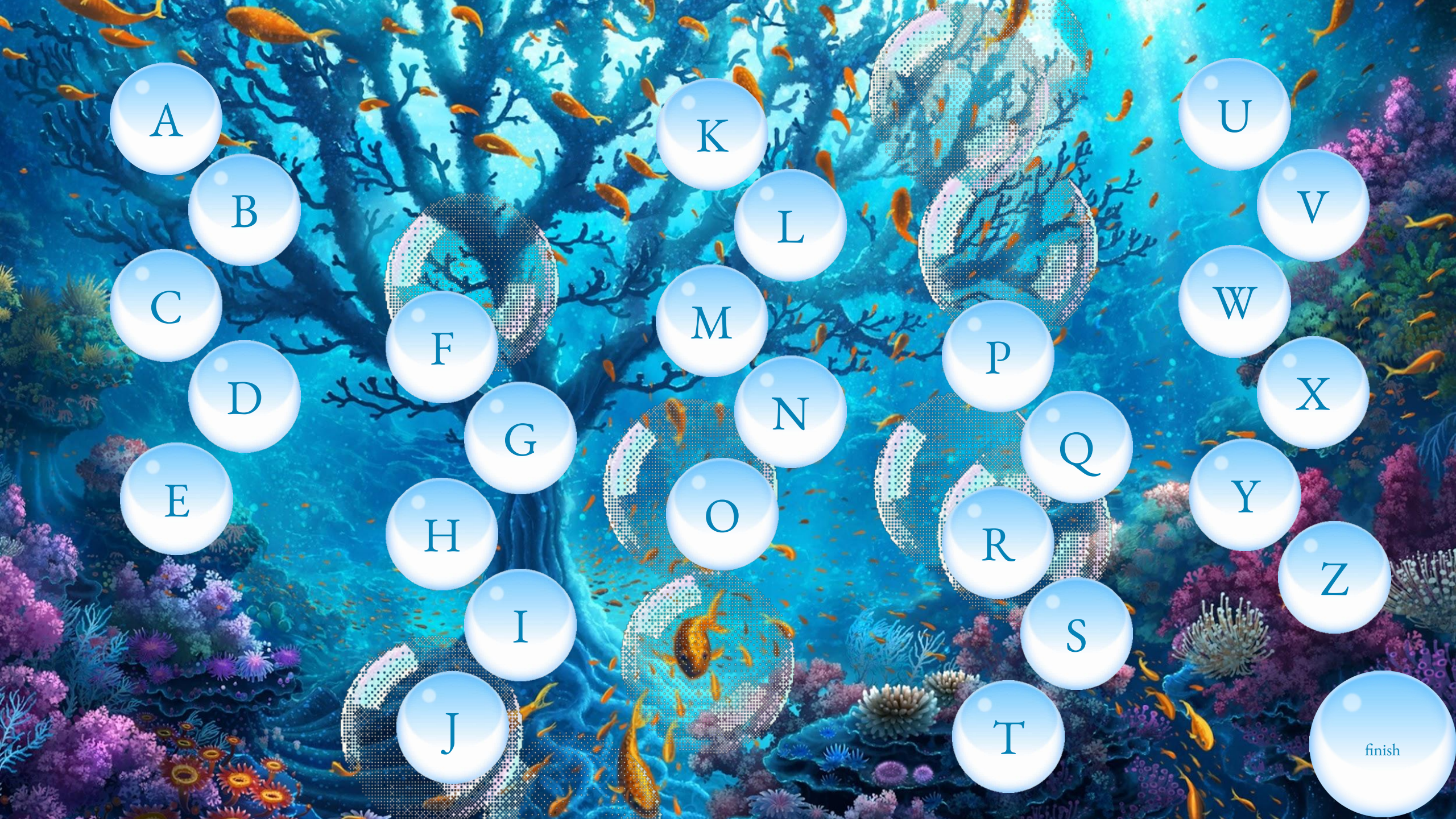




start

Underwater world



A

B

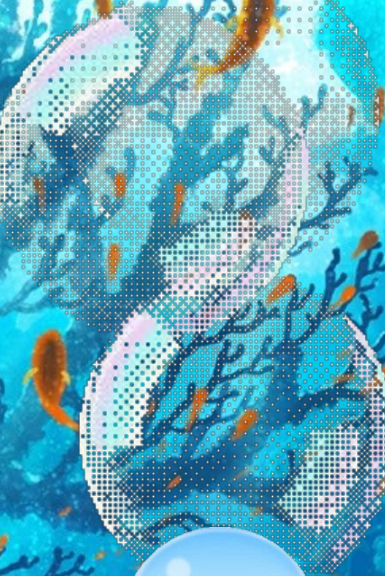
K

U

C



M



V

D

F

L

W

E

G

N

P

X

H



O



Y

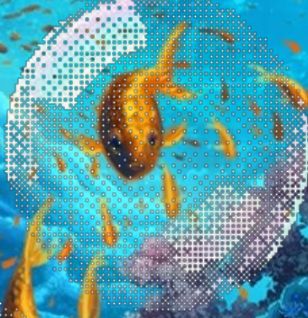
I

R

Z



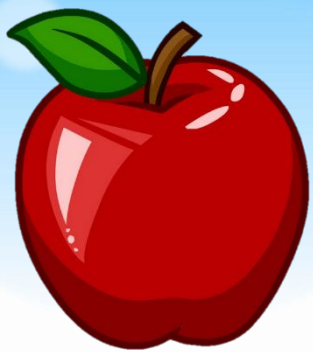
J



S

T

finish



apple



ant

A



BIRD



BALL

B



cat



car

C



doll

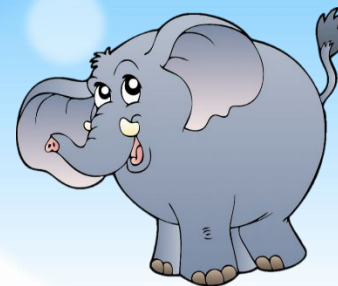


dog

d



egg



elephant

e



frog



fish

f



goat



girl



hippo

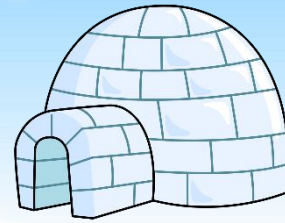


house

h



INSECT



IGLOO

I



jug



jump

J



kite

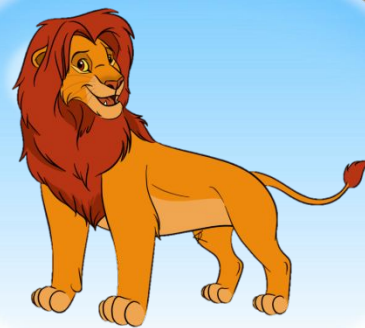


kangaroo

k



lemon



lion



monkey



mouse

m



nest



nose

n

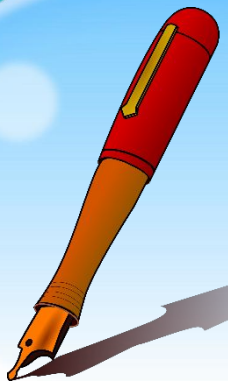


octopus



orange

0



pen



parrot

p



queen



quick

q



rabbit



red

r



snake



sun

s



tiger



train

t



umbrella



up

u



van



violin

v



water



whale

W



X-ray

X



yellow



Yo-yo



y



zebra



ZOO

Z



Great Job!