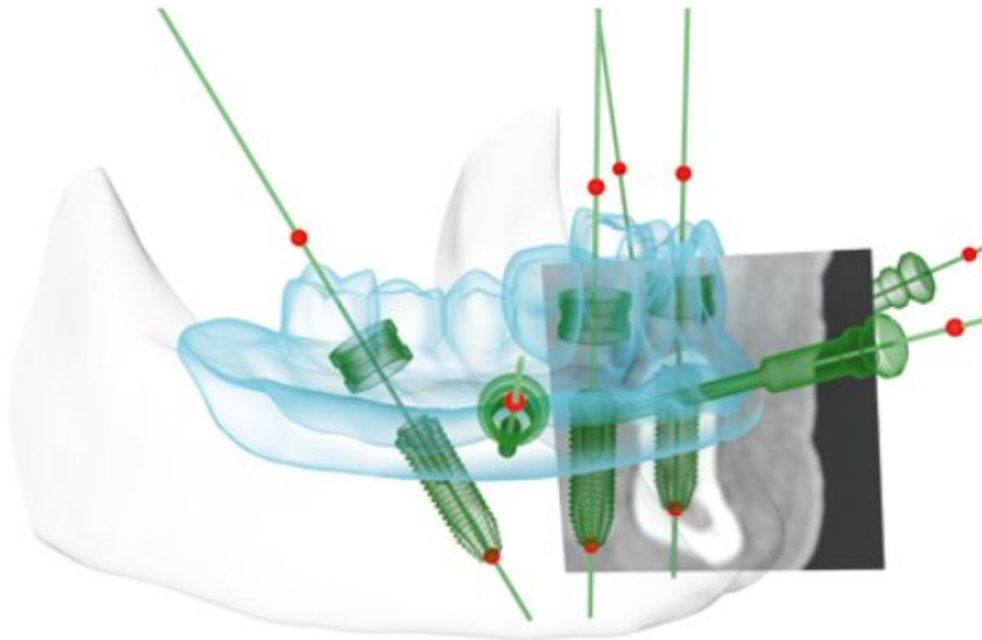


치조골에 Surgical Guide 고정 방식 변경



고정된 Anchor pin 모식도



Pin & Screw 고정 방식

1) Lateral Anchor Sleeve



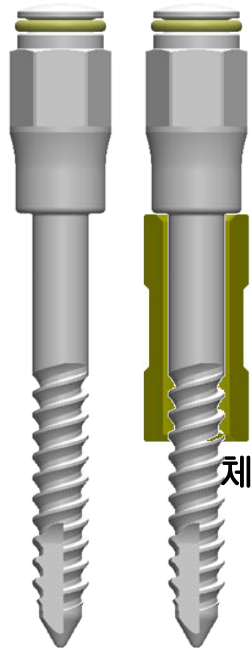
Short
(SGLAS30S)



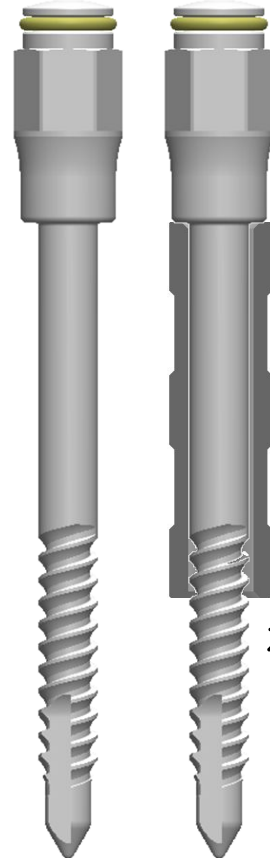
Long
(SGLAS30L)

Short과 Long 식별을 위해
Anodizing 실시

2) Lateral Anchor Pin



Short
(SGLAP18S)



Long
(SGLAP18L)

