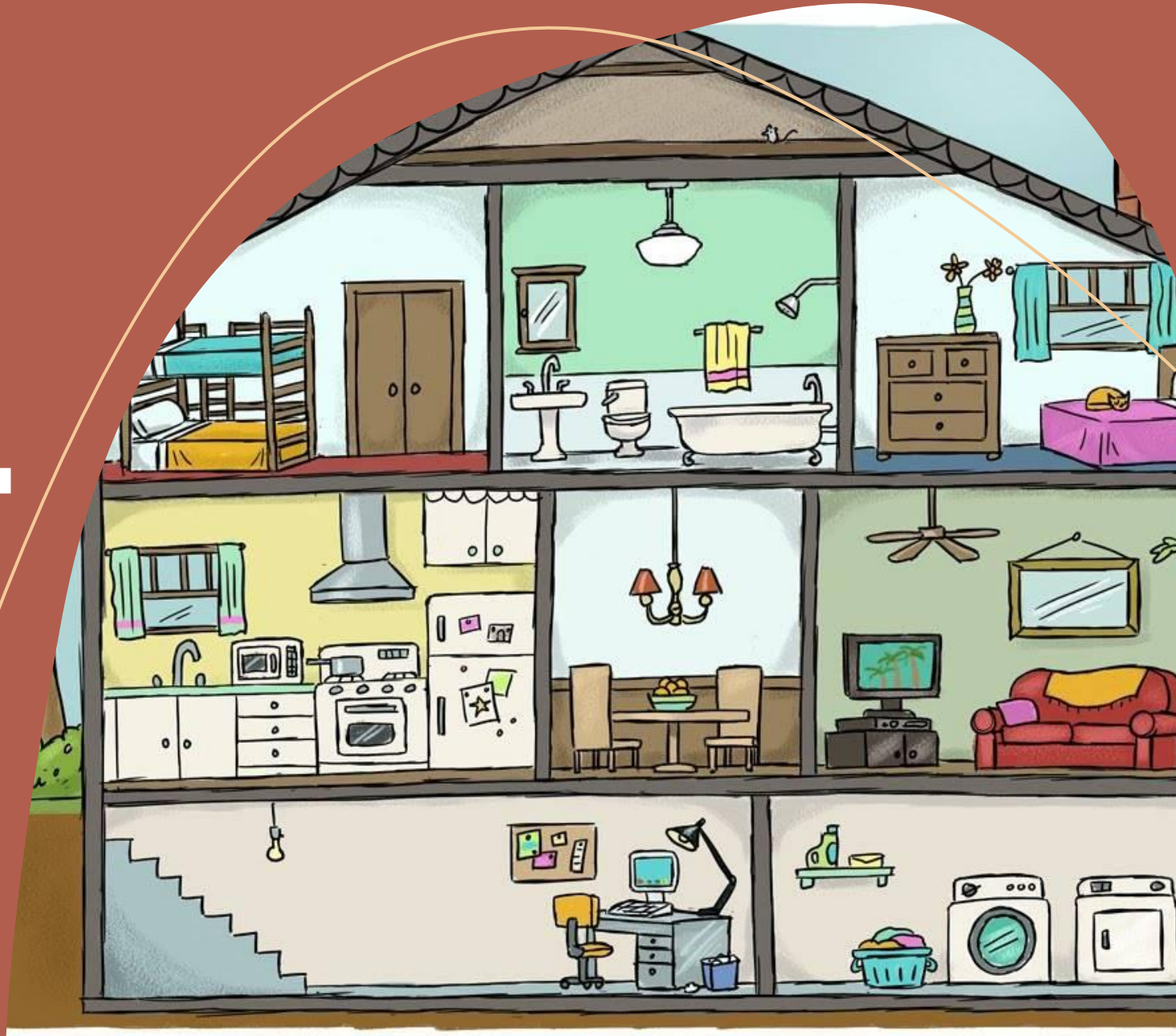


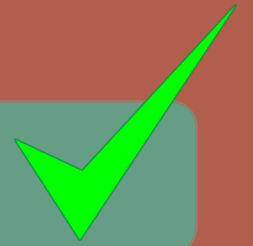
Prepositions of Place



Where's the dog?



It's in front of the box.



It's behind the box.

It's in the box.

Where's the dog?



It's in front of the box.

It's behind the box. ✓

It's on the box.

Where's the dog?



It's beside the box.

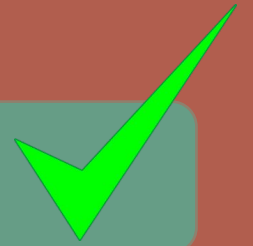
It's behind the box.

It's in the box. ✓

Where's the dog?



It's beside the box.



It's over the box.

It's in the box.

Where's the dog?



It's beside the box.

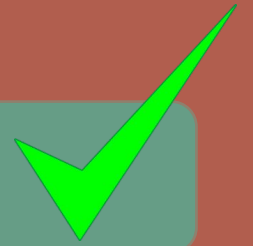
It's over the box.

It's under the box. ✓

Where's the dog?



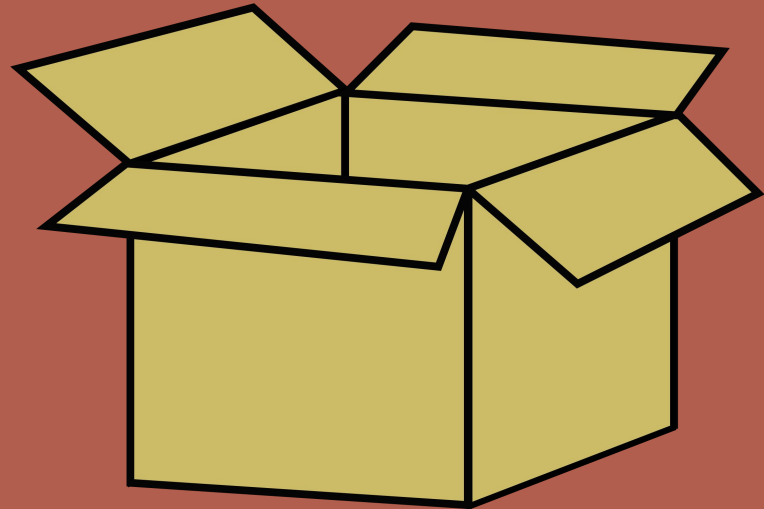
It's on the box.



It's over the box.

It's between the boxes.

Where's the dog?



It's on the box.

It's over the box. ✓

It's under the box.

Where's the dog?



It's between the boxes. ✓

It's over the box.

It's under the box.

Where's the laptop?



It's under the bed.

It's on the desk. ✓

It's beside the desk.

Where are the pillows?



They're under the bed.

They're on the bed. ✓

They're under the desk.

Where's the ball?



It's behind the chair.

It's between the bed and the desk.

It's in front of the lamp.

Where's the lamp?



It's over the bedside table.

It's in the bedside table.

It's on the bedside table. ✓

Where's the ceiling fan?



It's on the bed.

It's over the bed. ✓

It's under the bed.

Where's the rug?



It's in the backpack.

It's over the bed.

It's under the backpack. ✓

Where's the bed?



It's between the desk and the window.

It's between the bookshelves and the bedside table. ✓

It's between the chair and the desk.

Where's the window?



It's between the desk and the pictures.

It's between the clock and the door.

It's between the bookshelves and the desk. ✓

Where's the bedside table?



It's in front of the bed.

It's beside the bed. ✓

It's over the bed.