



LONDON

Performed by Nikita Rybalkin



River Thames-A River of London



London districts

City



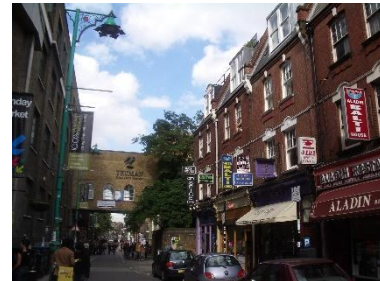
Westminster



the West End



the East. End



City



- The City is the oldest part of London, it's financial and business center. Numerous banks, offices and firms are concentrated here. Few people live in the City but over a million come to work here. There are two places of interest in the City: [St. Paul's Cathedral](#) and the [Tower of London](#). St. Paul's Cathedral was built in the 17th century by the architect Christopher Wren. The Tower of London was built in the 15th century. It was used as a fortress, a palace and a prison. Now it's a museum.







Westminster

- Westminster is the aristocratic official part of London. There are [Buckingham Palace](#) where the Queen lives and the [Houses of Parliament](#) along the north bank of the Thames. The clock tower of the Houses of Parliament is famous for its big hour bell known as «[Big Ben](#)». [Westminster Abbey](#) is the place where the coronation of nearly all kings and queens has taken place. Many of them are buried here as well as some other famous people of the country.













The West End

- The West End is the richest and most beautiful part of London. The best hotels, restaurants, shops, clubs, parks and houses are situated there. There are many tourists there from different countries of the world. [Trafalgar Square](#) is the geographical centre of London, it was named in the memory of Admiral Nelson's victory in the battle of Trafalgar in 1805. The tall [Nelson's Column](#) stands in the middle of the square.







The East End

- [The East End](#) is an industrial district of London. There are many factories there. The region is densely populated by working class families.





THE END