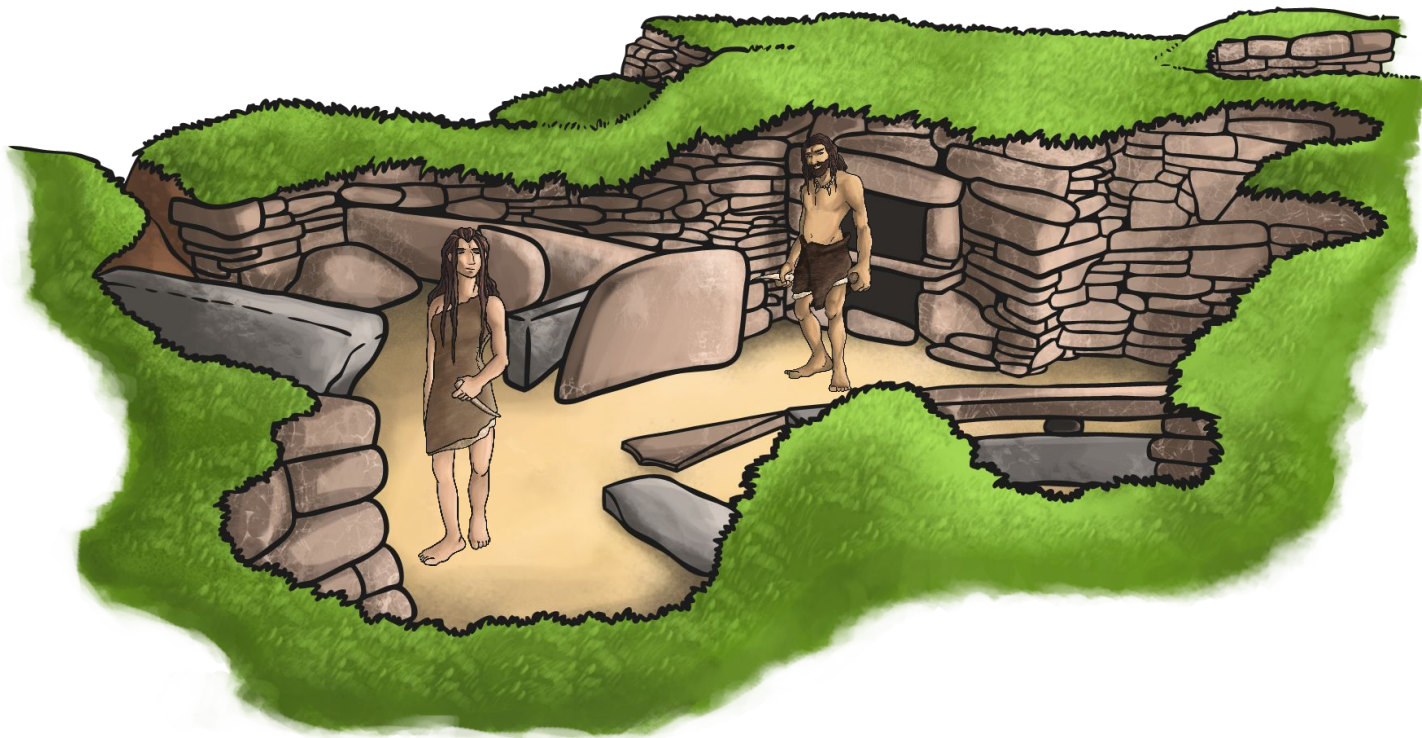


Skara Brae Quiz



When was Skara Brae built?

A

3000 AD

B

2000 BC

C

3000 BC

Oh no!

Try again



Correct!

Well done!



How many houses were there?

A

7

B

8

C

10

Oh no!

Try again



Correct!

Well done!



Where in the Orkney Islands is Skara Brae?

A

Mainland

B

Stromness

C

Kirkwall

Oh no!

Try again



Correct!

Well done!



Why do we think they burnt peat and seaweed on the fire?

A

There are no trees on Orkney

B

They used the wood for furniture

C

It smelt nice

Oh no!

Try again



Correct!

Well done!



Which of these applies to House 7?

A

It had elaborate carvings on the wall

B

The beds were smaller

C

It was bolted from the outside

Oh no!

Try again



Correct!

Well done!



What could house 8 have been?

A

A prison

B

A workshop

C

The house of the village leader

Oh no!

Try again



Correct!

Well done!



How big was the floor area?

A

Between 26 and 30 m²

B

Between 16 and 20 m²

C

Between 36 and 40 m²

Oh no!

Try again



Correct!

Well done!



What did they use for mattresses?

A

Heather and straw

B

Animal furs

C

Moss

Oh no!

Try again



Correct!

Well done!



What were the piles of rubbish called that they built against?

A

Midling

B

Midden

C

Midearth

Oh no!

Try again



Correct!

Well done!



Which of these is a likely material for the roof frame?

A

Bone

B

Wood

C

Stone

Oh no!

Try again

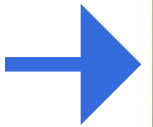


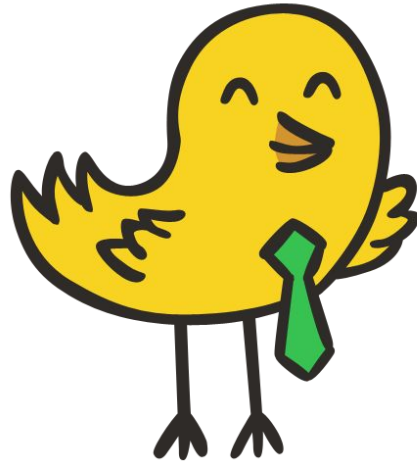
Correct!

Well done!



Can you think of one more question to test your partner with?





THE END