

Peptic Ulcer Disease

Name-MOHAMMAD DANISH
ANSARI

Group-LA2-173(2)

Course-4

Teacher-IGOR YATSKOV

INTRODUCTION

- Peptic Ulcer is a lesion in the lining (mucosa) of the digestive tract, typically in the stomach or duodenum, caused by the digestive action of pepsin and stomach

Lesion may subsequently occur into the lamina propria and submucosa to cause bleeding. –

Most of peptic ulcer occur either in the duodenum, or in the stomach – Ulcer may also occur in the lower esophagus due to reflexing of gastric content – Rarely in certain areas of the small intestine

PATHOPHYSIOLOGY

- Bicarbonate
- Mucus layer
- Prostaglandins
- Mucosal blood flow
- Epithelial renewal

Defensive



- *Helicobacter pylori*
- NSAIDs
- Pepsins
- Bile acids
- Smoking and alcohol

Aggressive



Under normal conditions, a physiologic balance exists between gastric acid secretion and gastroduodenal mucosal defense. Mucosal injury and, thus, peptic ulcer occur when the balance between the aggressive factors and the defensive mechanisms is disrupted. Aggressive factors, such as NSAIDs, *H pylori* infection, alcohol, bile salts, acid, and pepsin, can alter the mucosal defense by allowing back diffusion of hydrogen ions and subsequent epithelial cell injury.

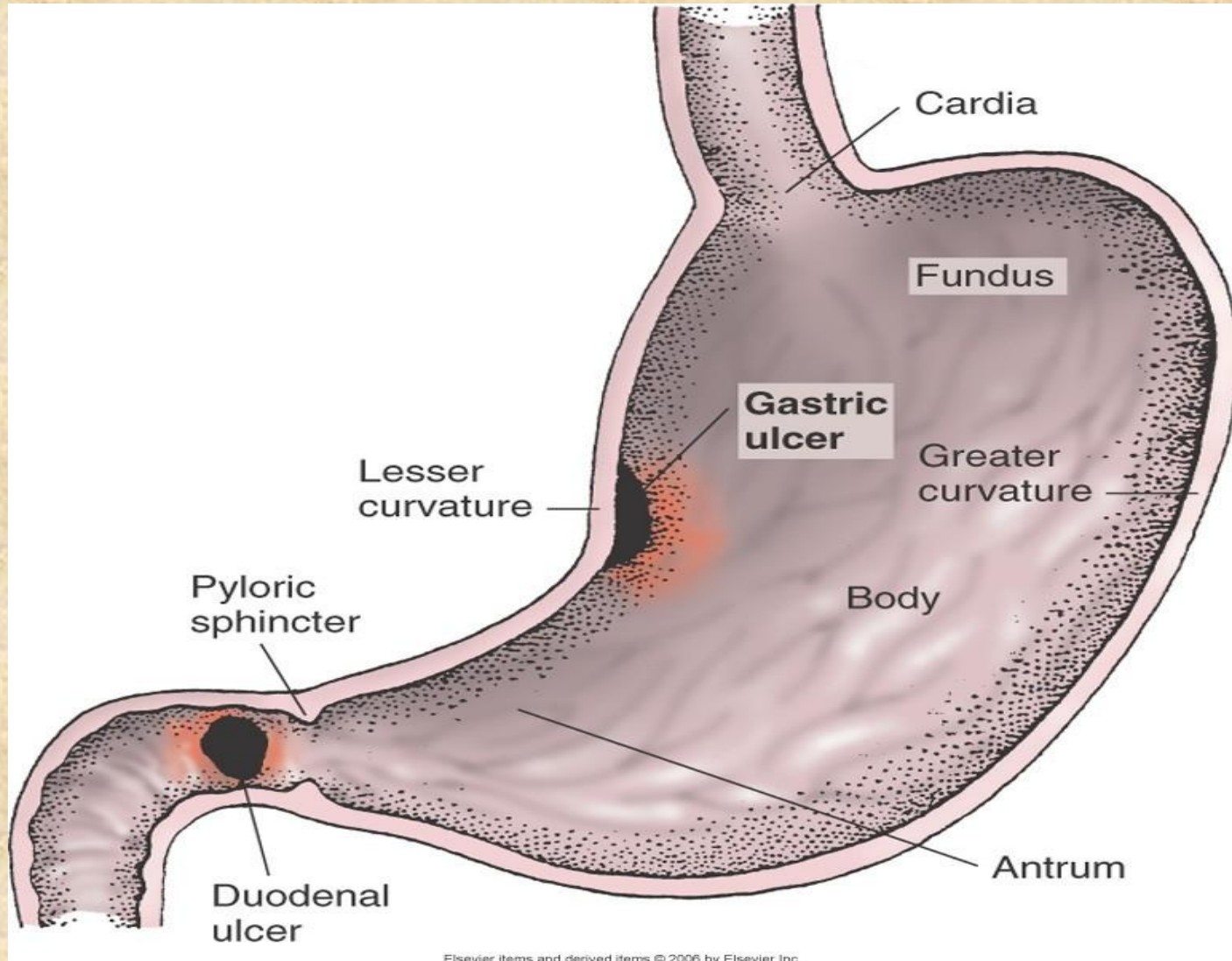
ETIOLOGY/ RISK FACTORS

- Lifestyle
 - Smoking
 - Acidic drinks
 - Medications
- H. Pylori infection
 - 90% have this bacterium
 - Passed from person to person (fecal-oral route or oral-oral route)
- Age
 - Duodenal 30-40
 - Gastric over 50
- Gender
 - Duodenal: are increasing in older women
- Genetic factors
 - More likely if family member has Hx
- Other factors: stress can worsen but not the cause

TYPES

- GASTRIC PEPTIC ULCER
- DUODENAL PEPTIC ULCER

Gastric and Duodenal Ulcers



	<u>Duodenal Ulcer</u>	<u>Gastric ulcer</u>
Age	Any age specially 30-40	middle age 50-60
Sex	More in male	More in female
Occupation	Stress job eg. Manager	Same
Pain	Epigastric , discomfort	Epi. Can radiate to back
Onset	2-3 hours after eating & midnight	Immediately after eating
Agg.by	Hunger	Eating

	<u>Duodenal Ulcer</u>	<u>Gastric ulcer</u>
Relieved by	Eating	Lying down or vomiting
Duration	1-2 months	Few weeks
Vomiting	Uncommon	Common(to relieve the pain)
Appetite	Good	Pt. afraid to eat
Diet	Good , eat to relieve the pain	Avoid fried food
Weight	No wt. loss	wt. Loss
Hematemesis	40%	60%
Melena	60%	40%

INVESTIGATION

- Stool examination for fecal occult blood.
- Complete blood count (CBC) for decrease in blood cells.

DIAGNOSTIC TEST

- Esophagogastrodeuodenoscopy (EGD)
 - Endoscopic procedure
 - Visualizes ulcer crater
 - Ability to take tissue biopsy to R/O cancer and diagnose H. pylori
 - Upper gastrointestinal series (UGI)
 - Barium swallow
 - X-ray that visualizes structures of the upper GI tract
 - Urea Breath Testing
 - Used to detect H.pylori
 - Client drinks a carbon-enriched urea solution
 - Exhaled carbon dioxide is then measured

In all patients with “**Alarming symptoms**” endoscopy is required.

- Dysphagia.
- Weight loss.
- Vomiting.
- Anorexia.
- Hematemesis or Melena

Complications of Peptic Ulcers

- Hemorrhage
 - Blood vessels damaged as ulcer erodes into the muscles of stomach or duodenal wall
 - Coffee ground vomitus or occult blood in tarry stools
- Perforation
 - An ulcer can erode through the entire wall
 - Bacteria and partially digested food spill into peritoneum=peritonitis
- Narrowing and obstruction (pyloric)
 - Swelling and scarring can cause obstruction of food leaving stomach=repeated vomiting

MANAGEMENT

- LIFE STYLE MODIFICATION
- HYPOSECRETORY DRUG THERAPY
- *H. pylori* ERADICATION THERAPY
- SURGERY

LIFE STYLE MODIFICATION



Discontinue NSAIDs



Smoking cessation.



Alcohol cessation.



Stress reduction.

Hyposecretory Drugs

- Proton Pump Inhibitors
 - Suppress acid production
 - Prilosec, Prevacid
- H₂-Receptor Antagonists
 - Block histamine-stimulated gastric secretions
 - Zantac, Pepcid, Axid
- Antacids
 - Neutralizes acid and prevents formation of pepsin (Maalox, Mylanta)
 - Give 2 hours after meals and at bedtime
- Prostaglandin Analogs
 - Reduce gastric acid and enhances mucosal resistance to injury
 - Cytotec
- Mucosal barrier fortifiers
 - Forms a protective coat
 - Carafate/Sucralfate
 - cytoprotective

H. pylori Eradication Therapy:

- **Triple therapy:**

- Proton pump inhibitor .

- 2 Antibiotics:

- Metronidazole + Clarithromycin.

- Clarithromycin + Amoxicillin.



SURGICAL TREATMENT

Indications:

- Failure of medical treatment.**
- Development of complications**
- High level of gastric secretion and combined duodenal and gastric ulcer.**

Principle:

Reduce acid and pepsin secretion.

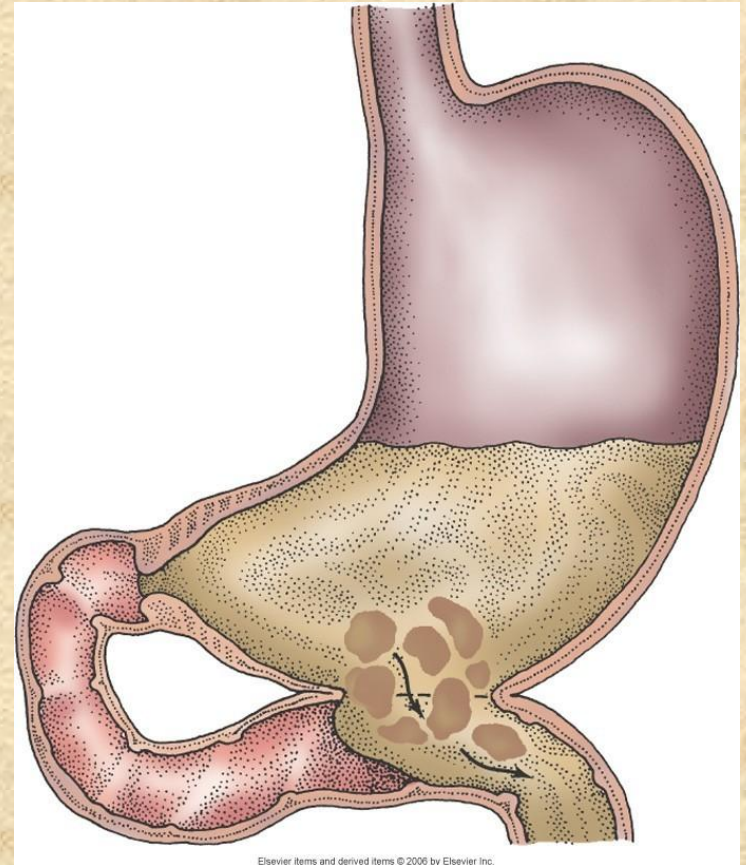
Types of Surgical Procedures

- **GASTROENTEROSTOMY**

Creates a passage between the body of stomach to small intestines.

Allows regurgitation of alkaline duodenal contents into the stomach.

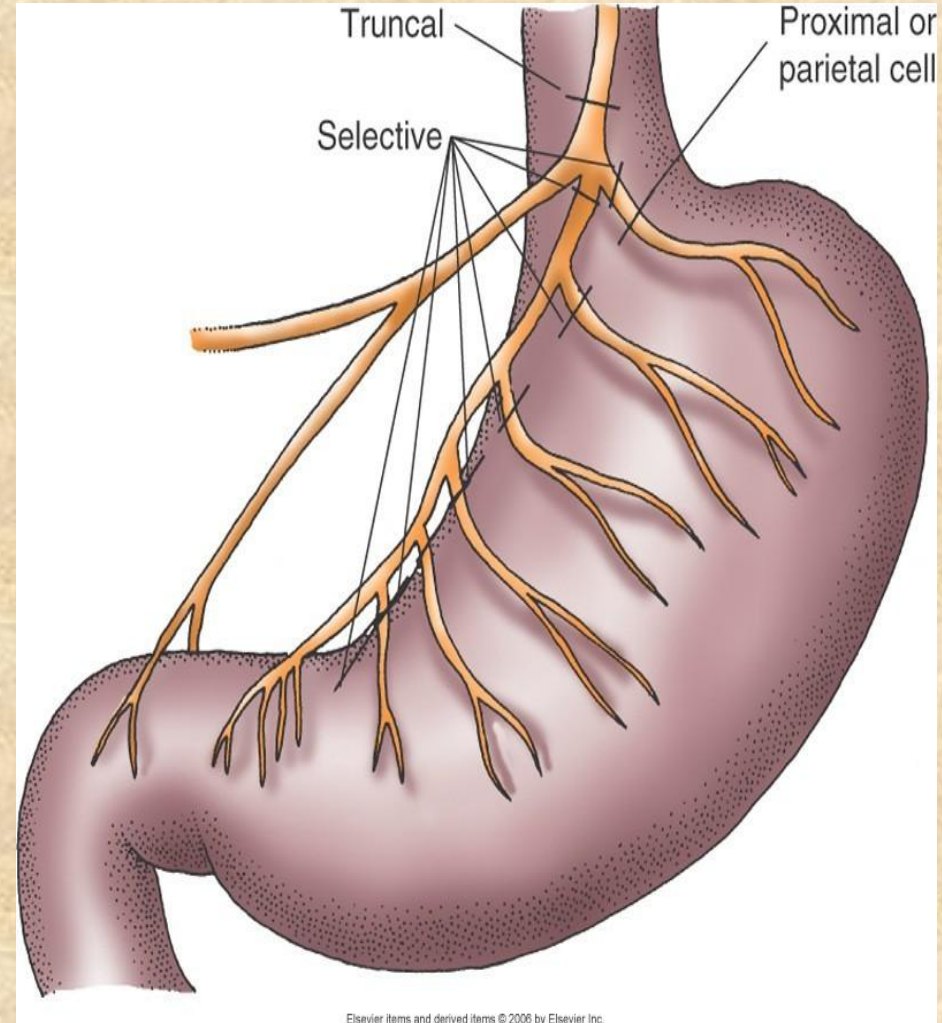
Keeps acid away from ulcerated area



Types of Surgical Procedures

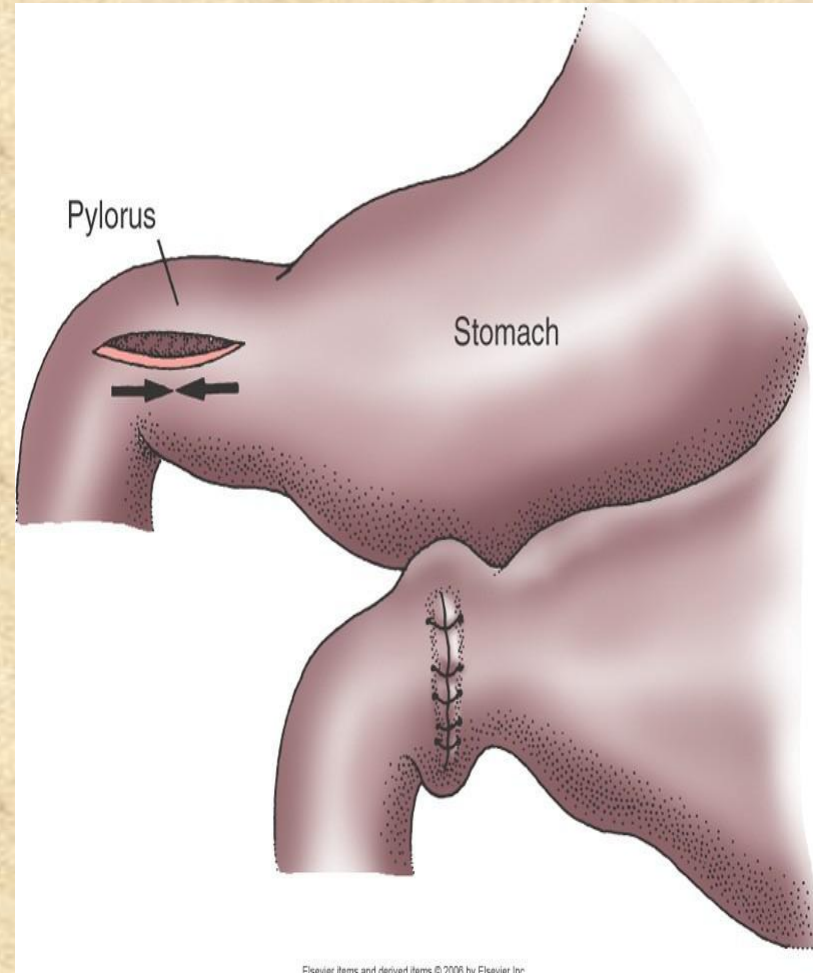
- **VAGOTOMY**

- Cuts vagus nerve
- Eliminates acid-secretion stimulus



Types of Surgical Procedures

- **PYLOROPLASTY**
 - Widens the pylorus to guarantee stomach emptying even without vagus nerve stimulation

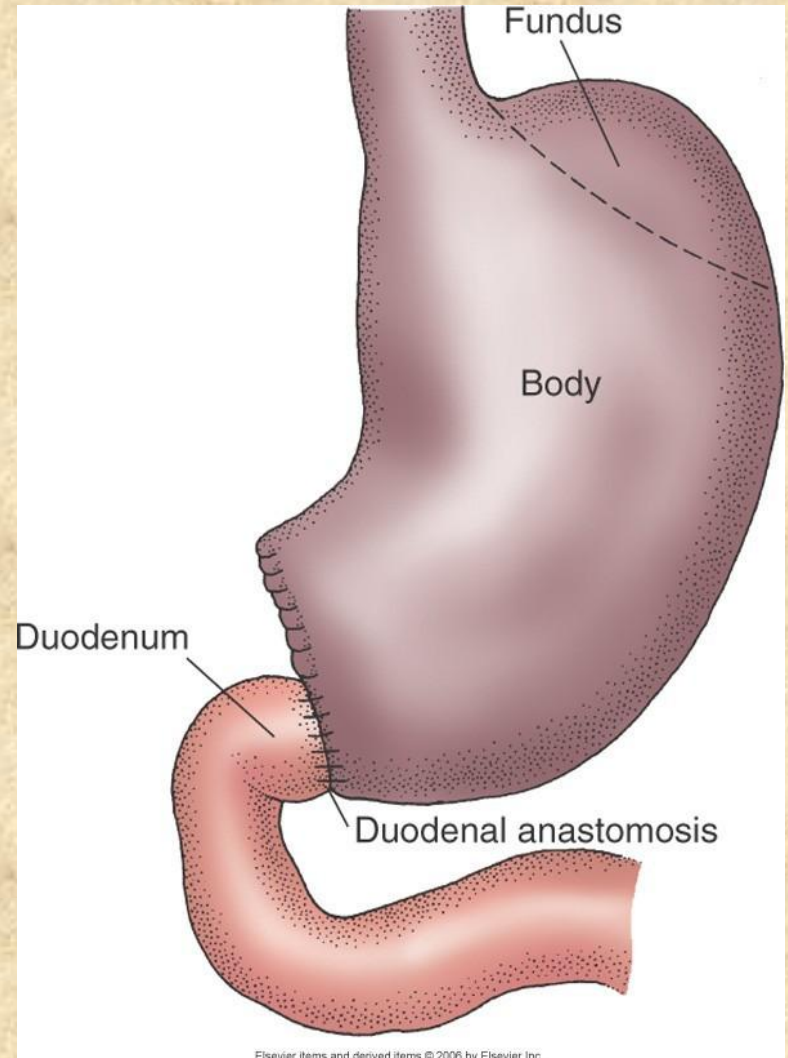


Types of Surgical Procedures

- **ANTRECTOMY/ SUBTOTAL GASTRECTOMY**
 - Lower half of stomach (antrum) makes most of the acid
 - Removing this portion (antrectomy) decreases acid production
- **SUBTOTAL GASTRECTOMY**
 - Removes $\frac{1}{2}$ to $\frac{2}{3}$ of stomach
- Remainder must be reattached to the rest of the bowel
 - Billroth I
 - Billroth II

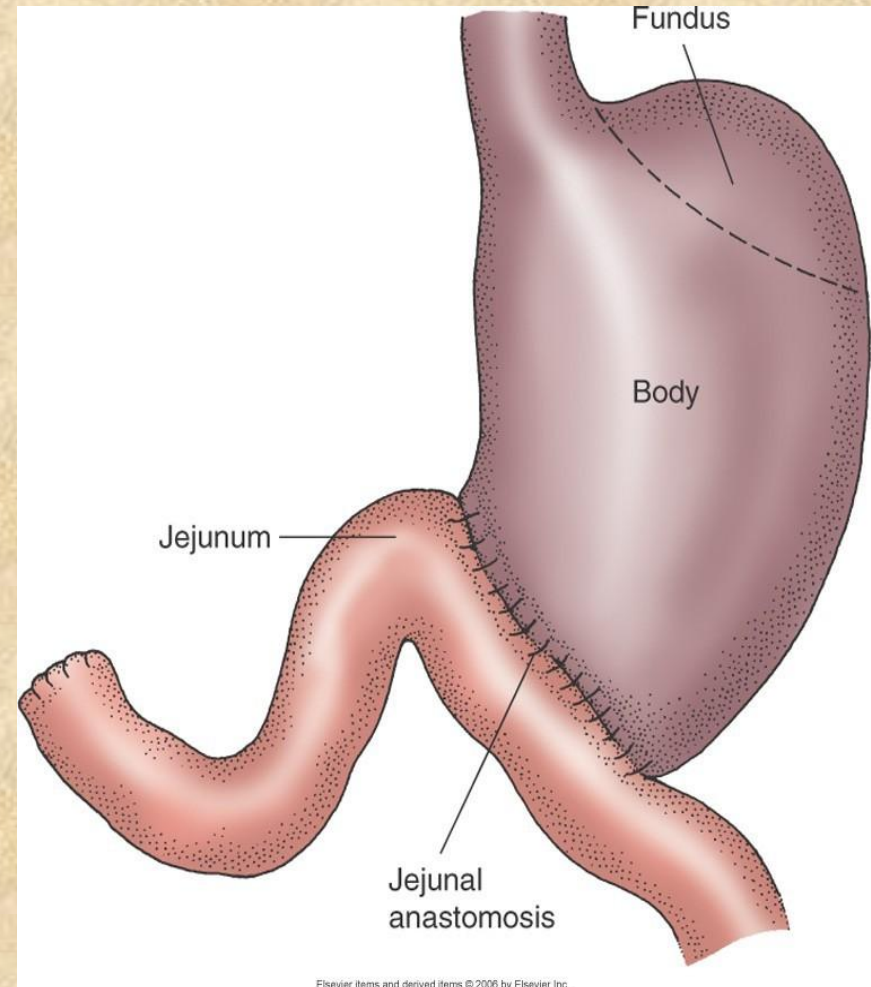
Billroth I

- Distal portion of the stomach is removed
- The remainder is anastomosed to the duodenum



Billroth II

- The lower portion of the stomach is removed and the remainder is anastomosed to the jejunum



Postoperative Care

- NG tube – care and management
- Monitor for post-operative complications

THANK

YOU!

