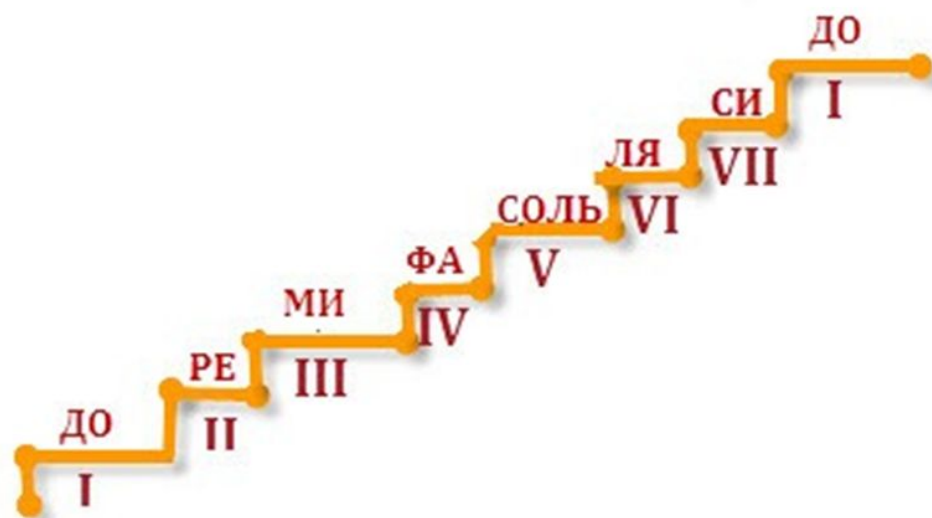


Опевание устойчивых ступеней

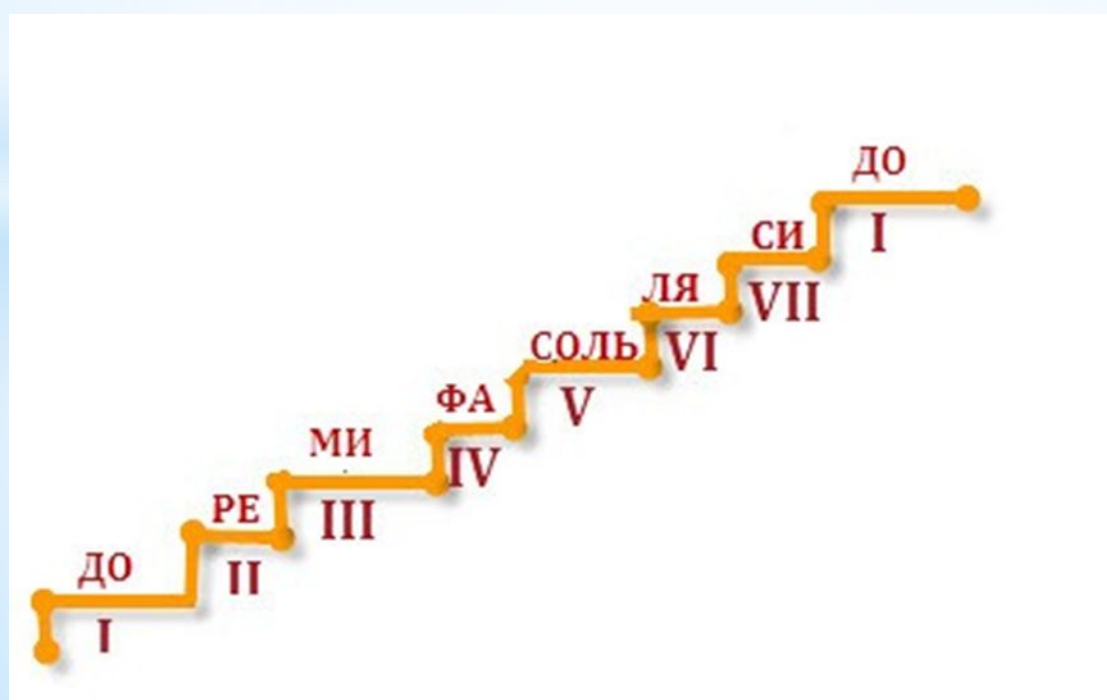
О - пе - ва - ем пер - ву - ю, си - ре - до, о - пе - ва - ем тре - тью:
ре - фа - ми, о - пе - ва - ем пя - ту - ю: фа - ля - соль.

The image shows a musical score in 2/4 time. The melody consists of quarter notes on a single staff. The lyrics are written below the notes. The notes correspond to the notes shown in the diagram below: Do, Re, Mi, Fa, Sol, La, Si, Do.

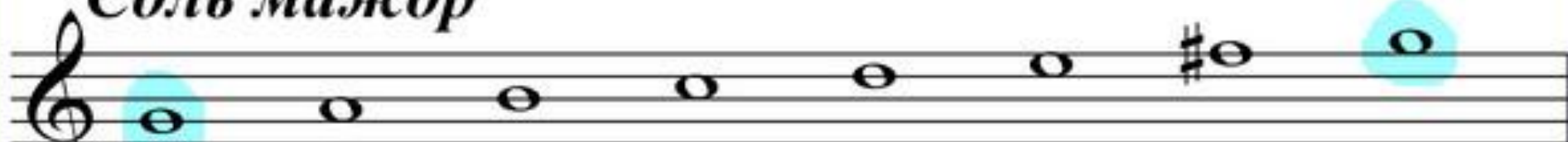


Ок ру жа ют То ни ку слу ги с_двух сто - рон,
у не - е есть верх - ний и ниж - ний ввoд - ный тон

The image shows a musical score for voice and piano. The top staff is for the voice, in 2/4 time, with lyrics: "Ок ру жа ют То ни ку слу ги с_двух сто - рон,". The bottom staff is for the piano, marked with a piano (p) dynamic, and has lyrics: "у не - е есть верх - ний и ниж - ний ввoд - ный тон". Both staves show a melodic line with eighth and quarter notes.



Соль мажор



СОЛЬ

СОЛЬ

Как под горкой, под горой



Соль мажор

Musical notation for the key signature 'Соль мажор'. It shows a treble clef and a scale of whole notes: C4, D4, E4, F4, G4, A4, B4, C5. The notes C4 and C5 are highlighted with light blue circles. The word 'СОЛЬ' is written below the first and last notes.

СОЛЬ СОЛЬ