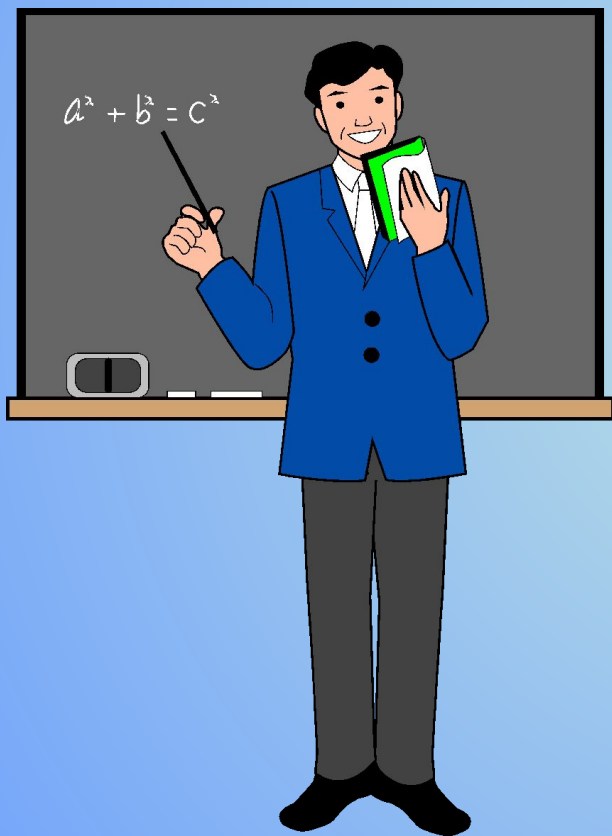
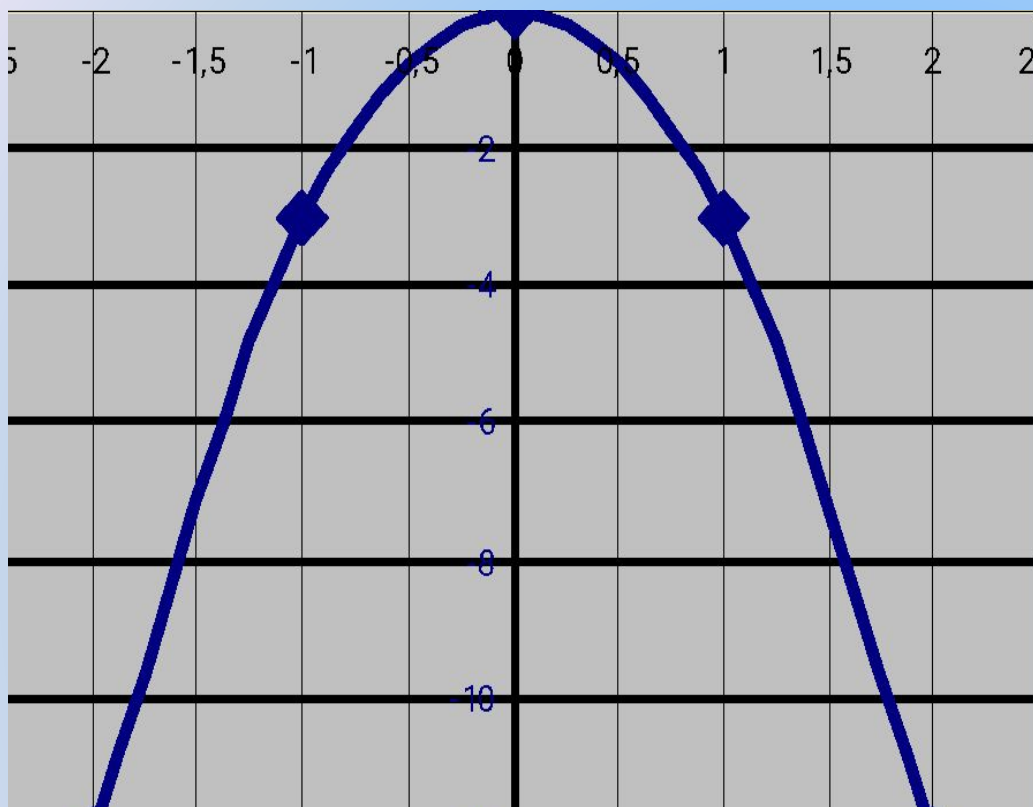


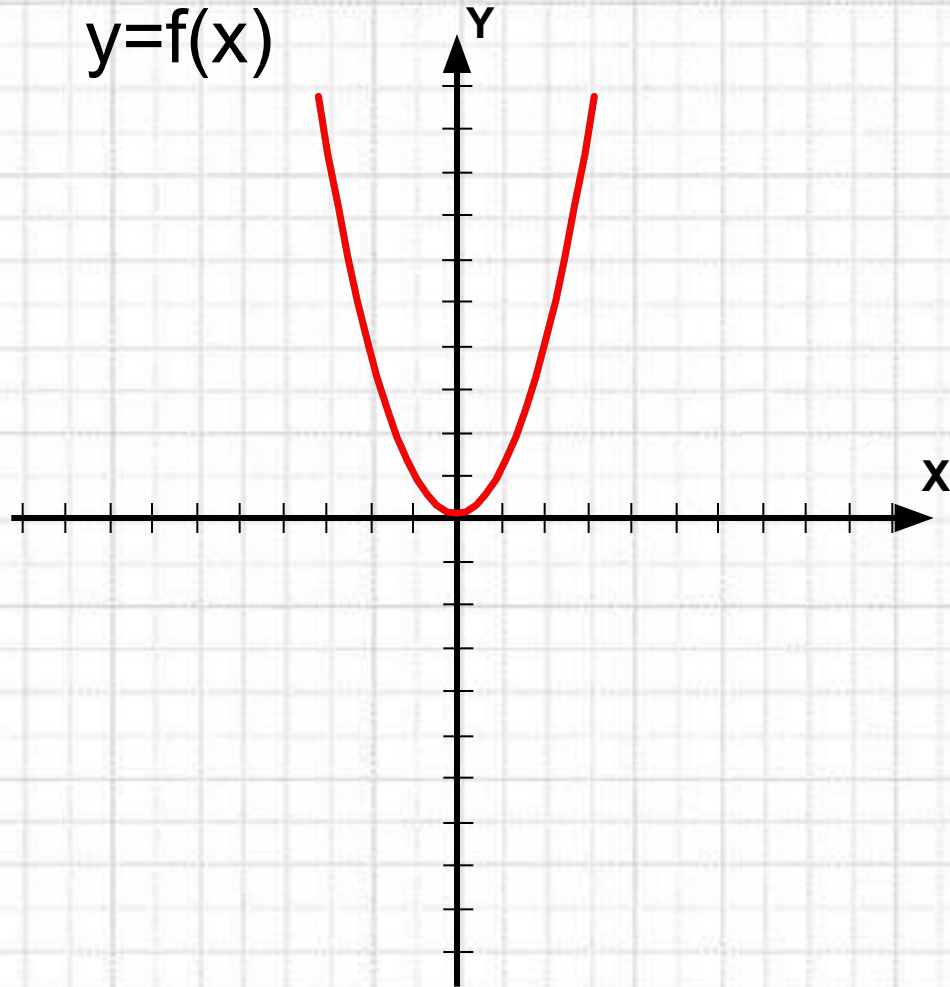
# Преобразования графиков функций



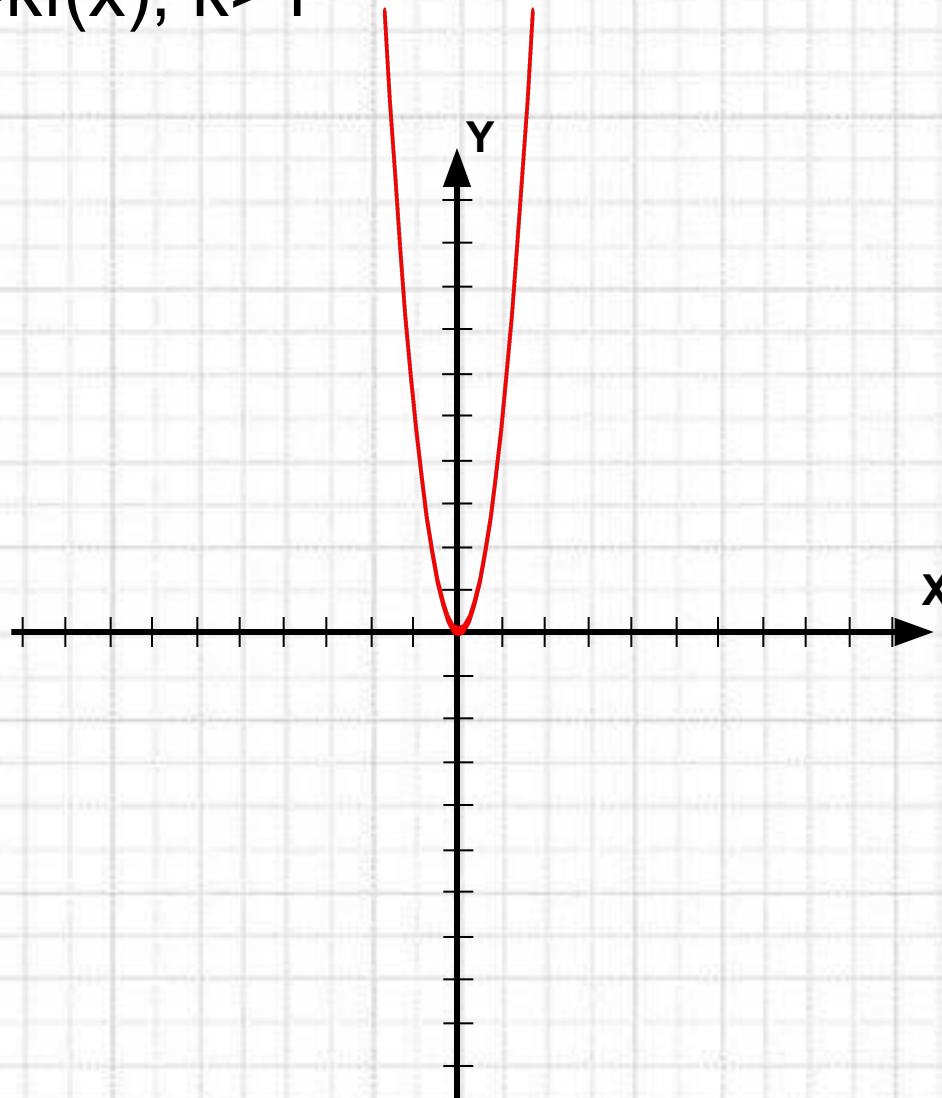
# Растяжение графиков функций



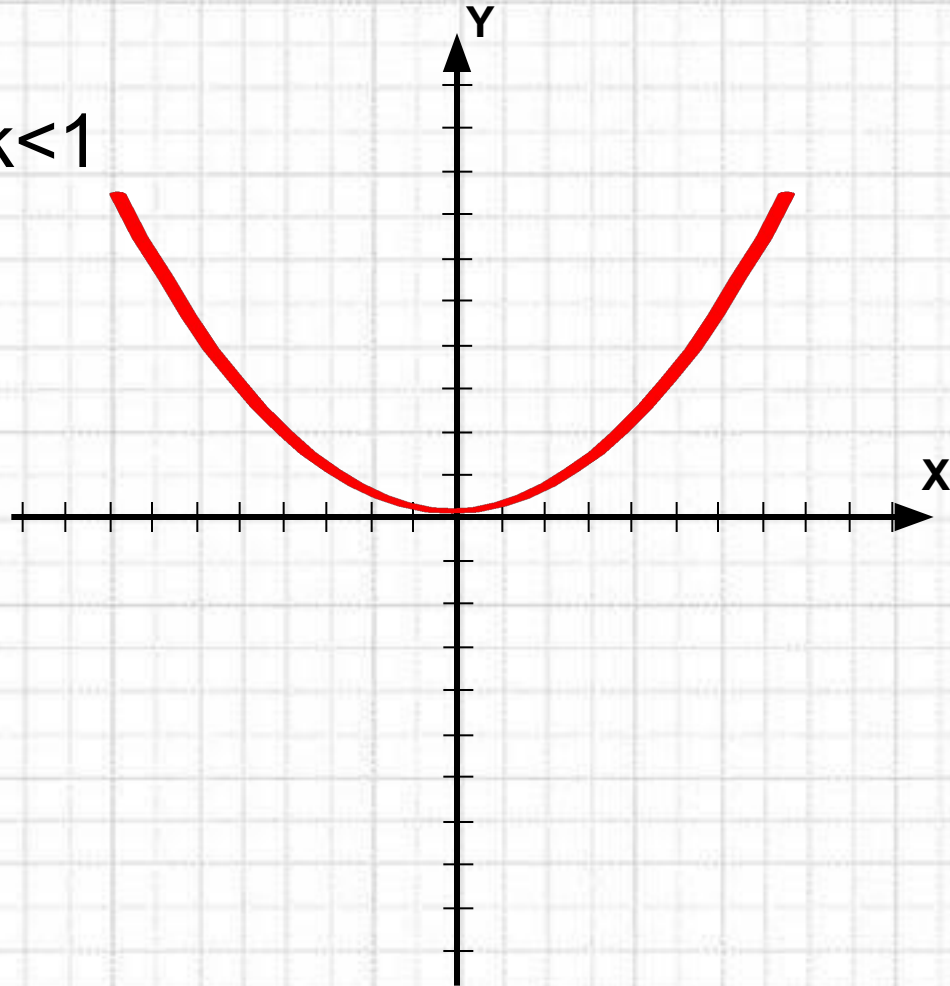
$$y=f(x)$$



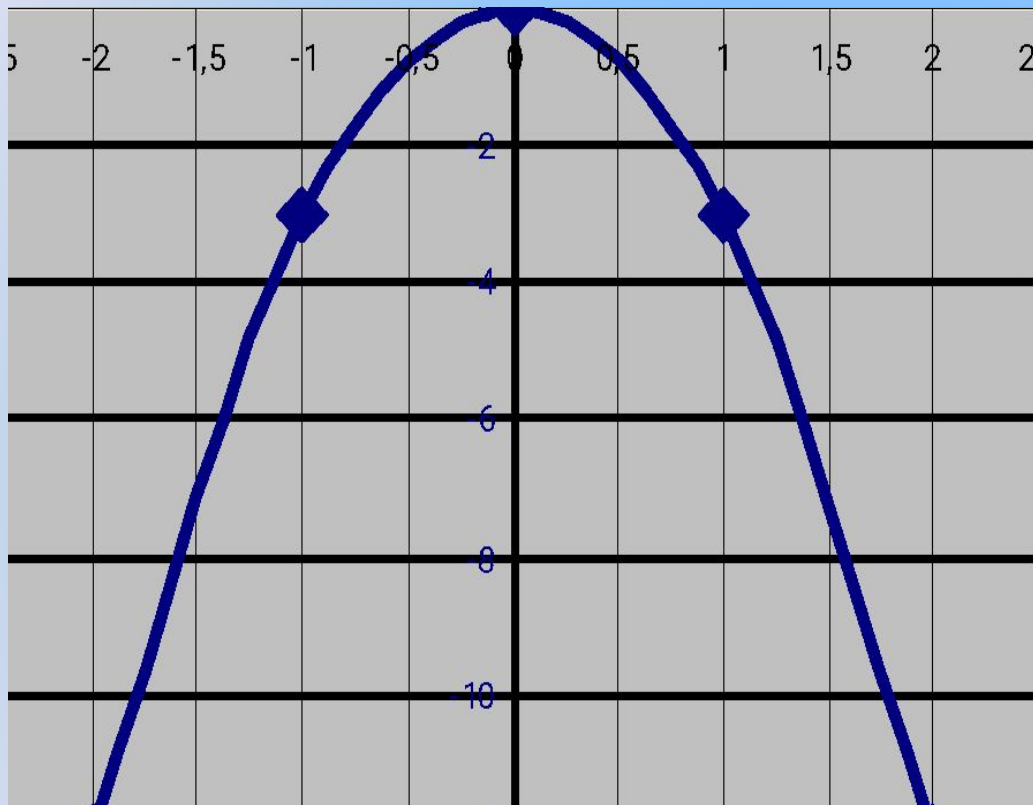
$$y=kf(x), k>1$$



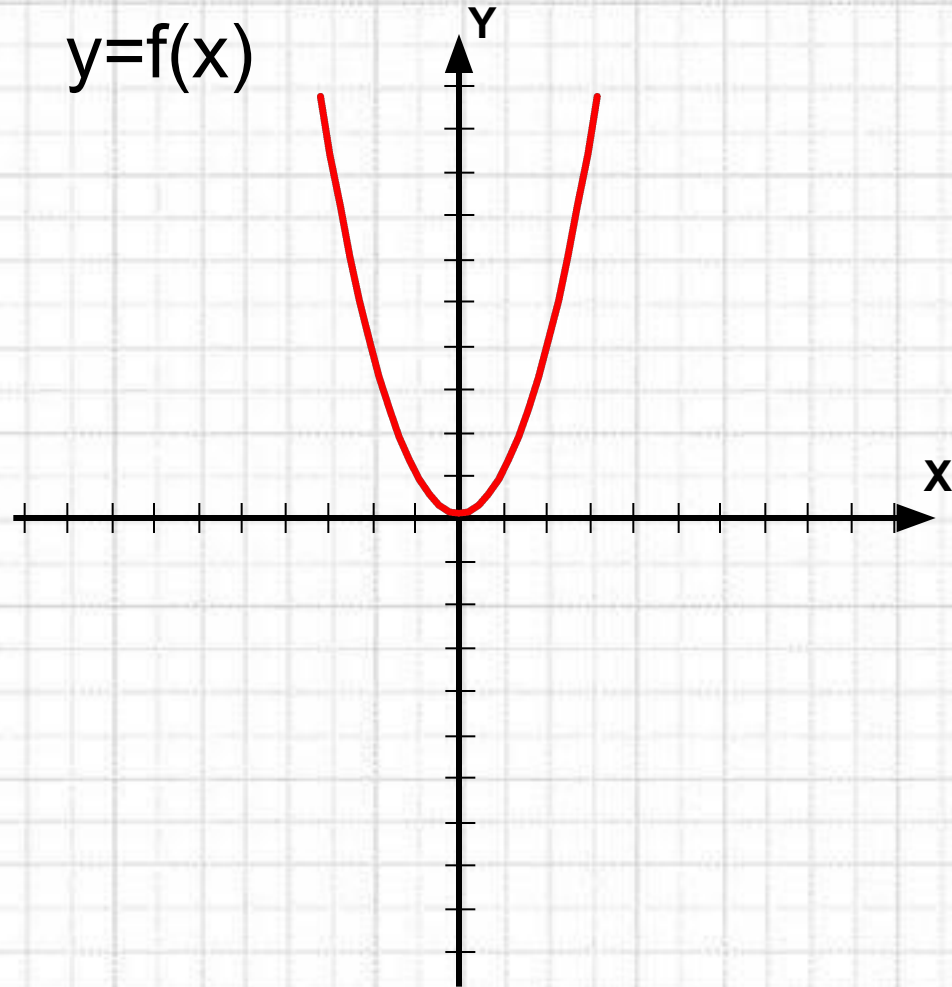
$$y=kf(x), 0 < k < 1$$



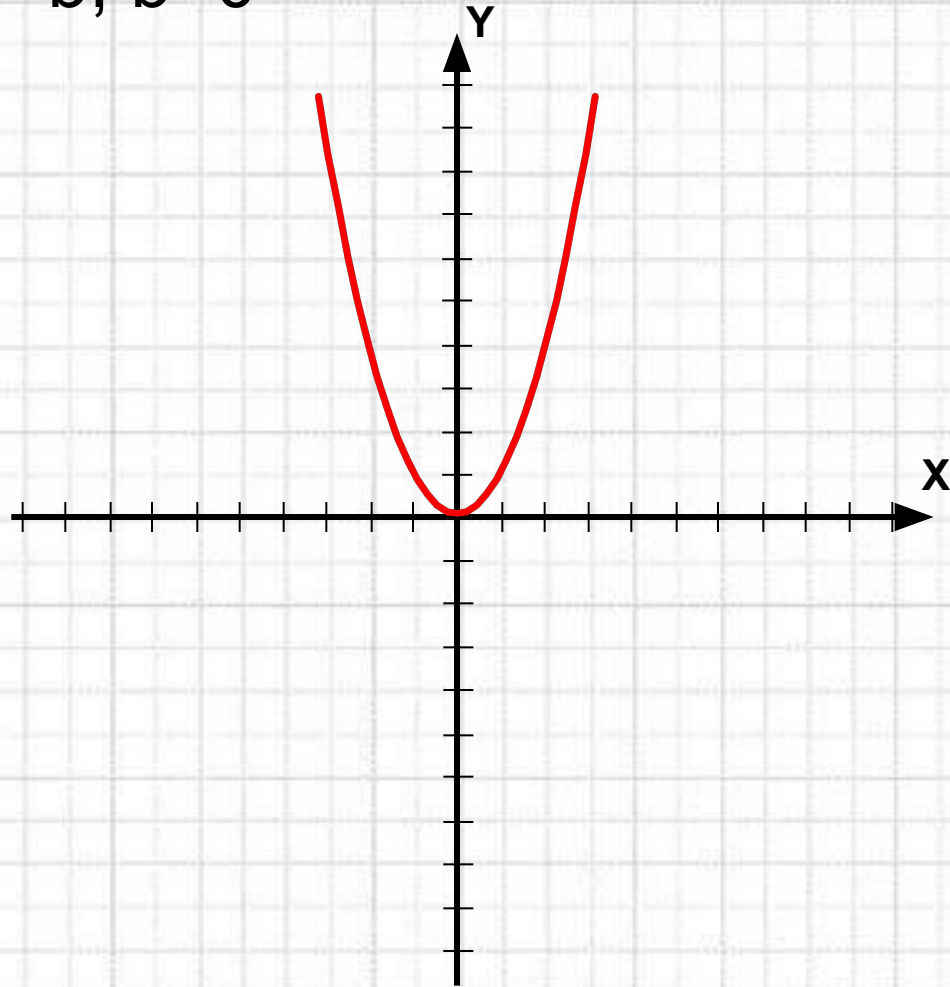
# Параллельный перенос графиков функций



$$y=f(x)$$

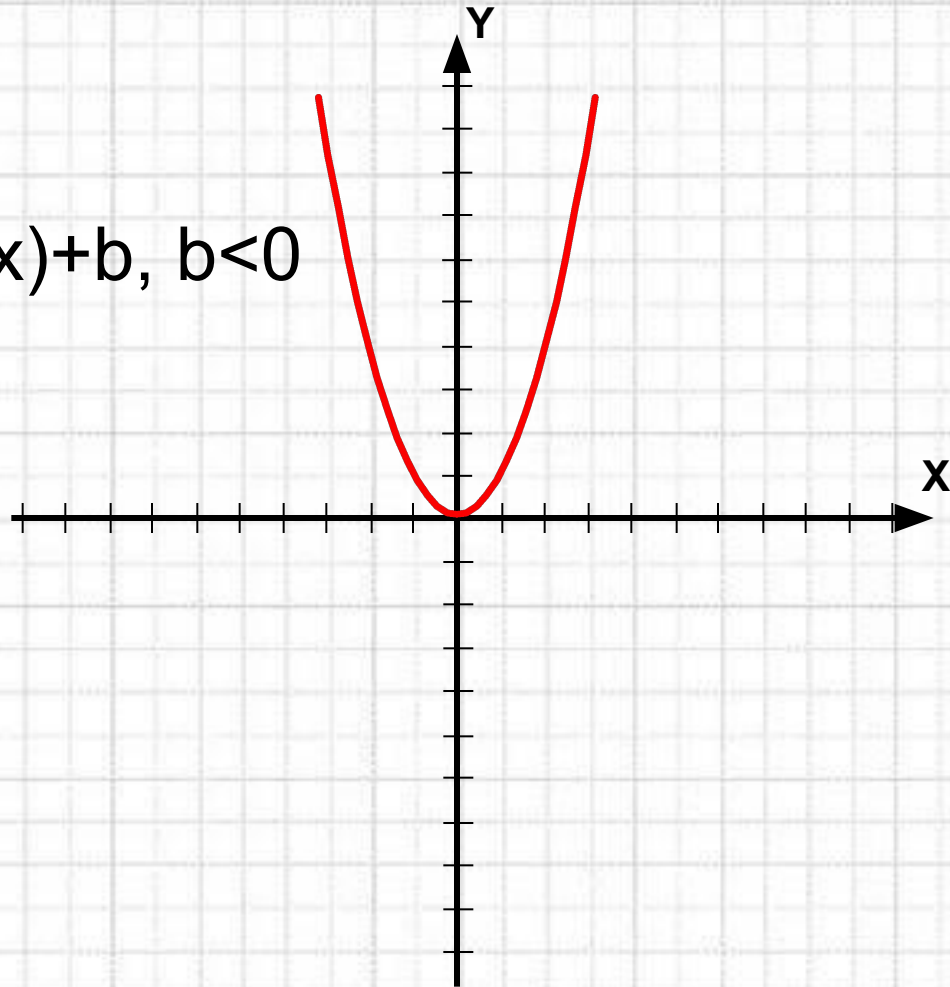


$$y=f(x)+b, \quad b>0$$

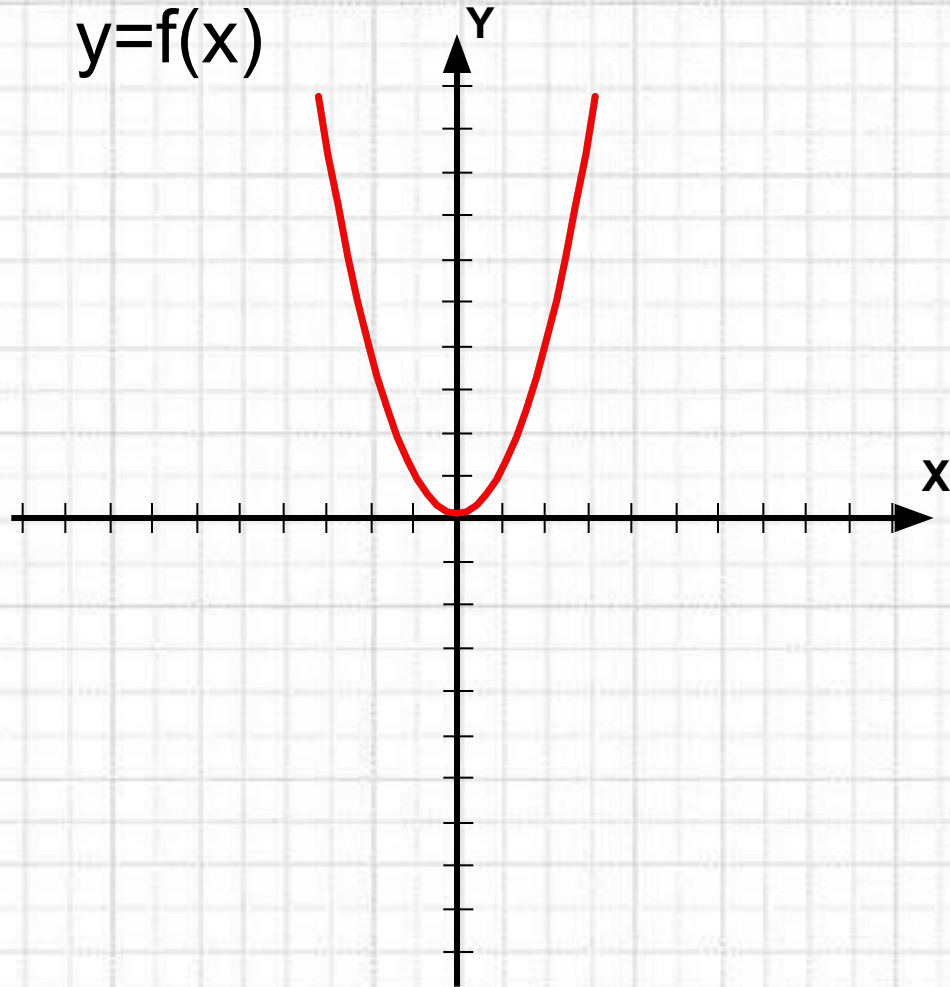




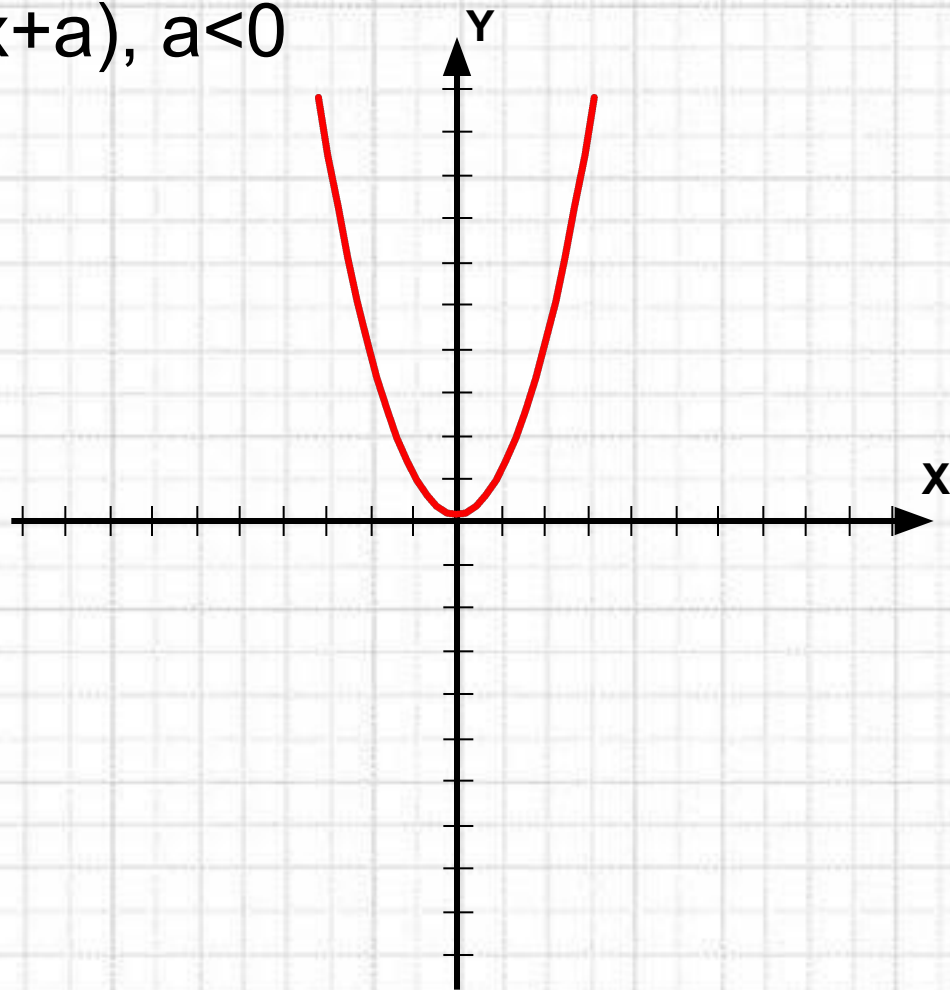
$$y=f(x)+b, b<0$$



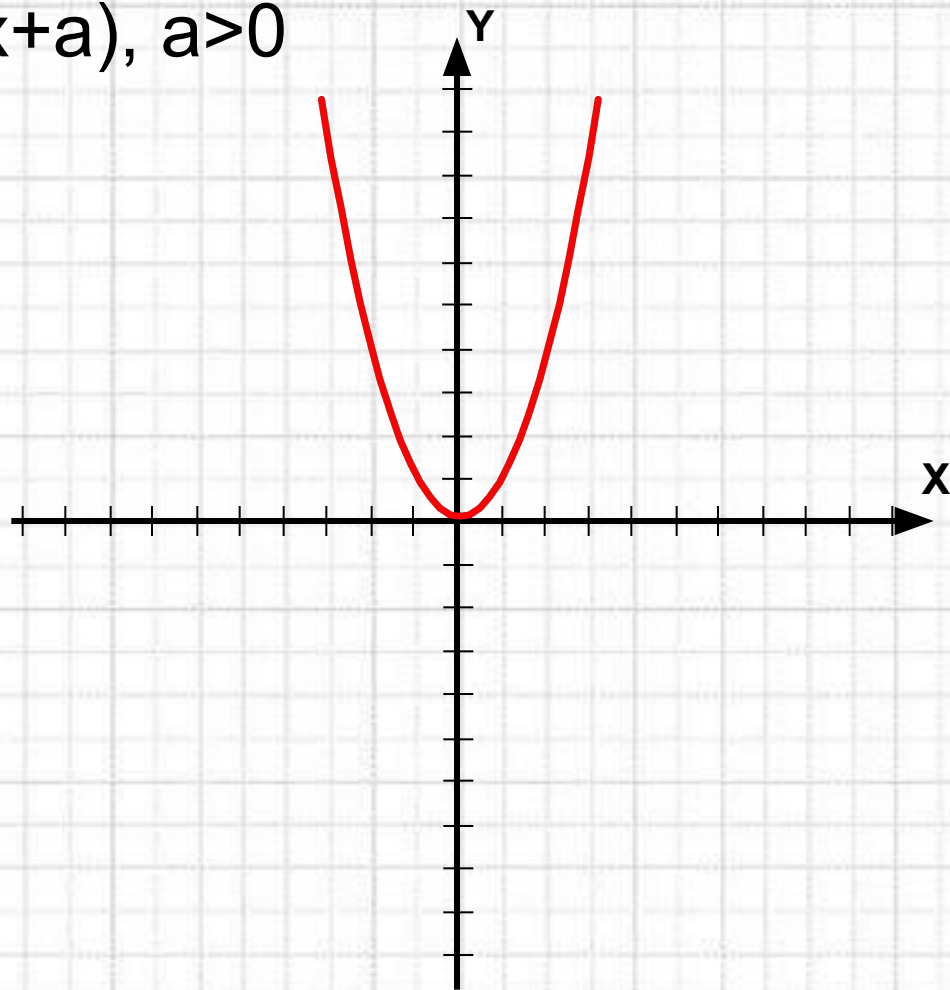
$$y=f(x)$$



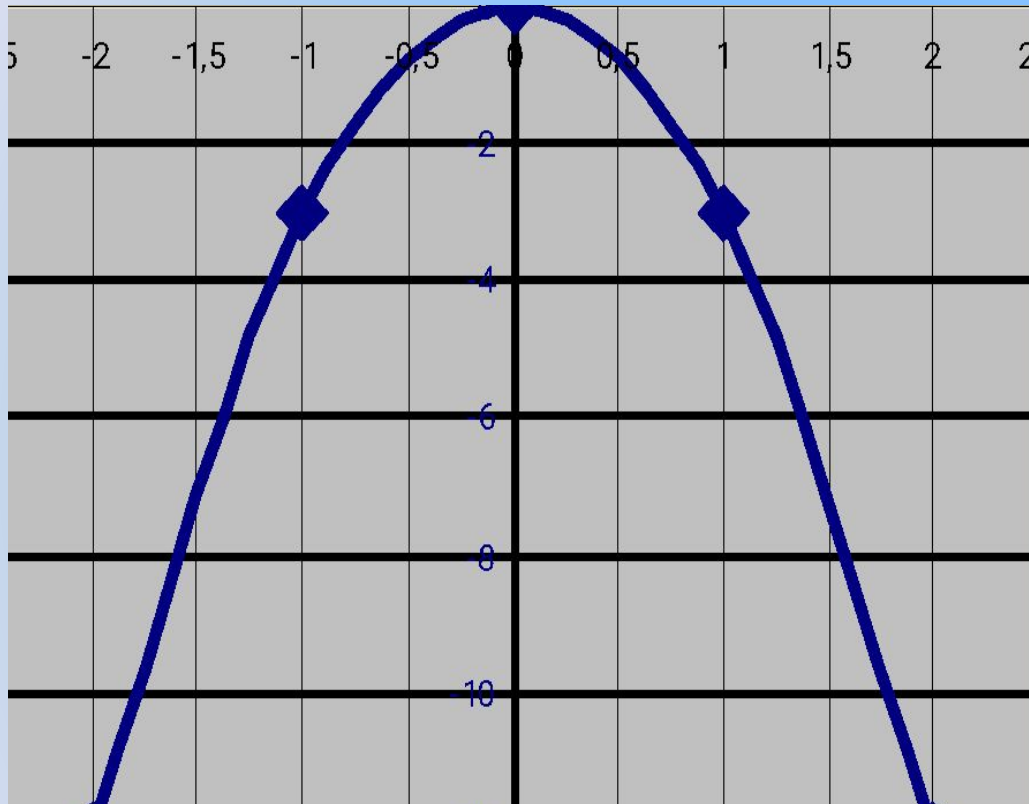
$$y=f(x+a), a<0$$



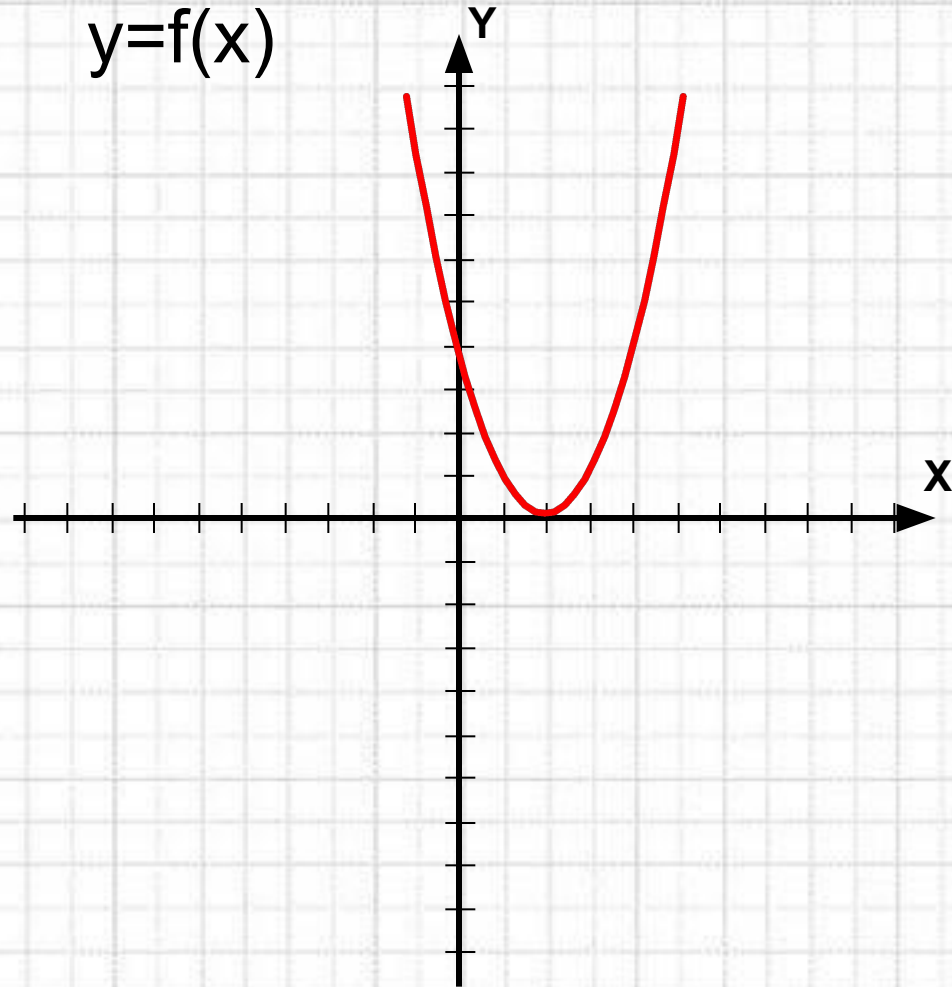
$$y=f(x+a), a>0$$



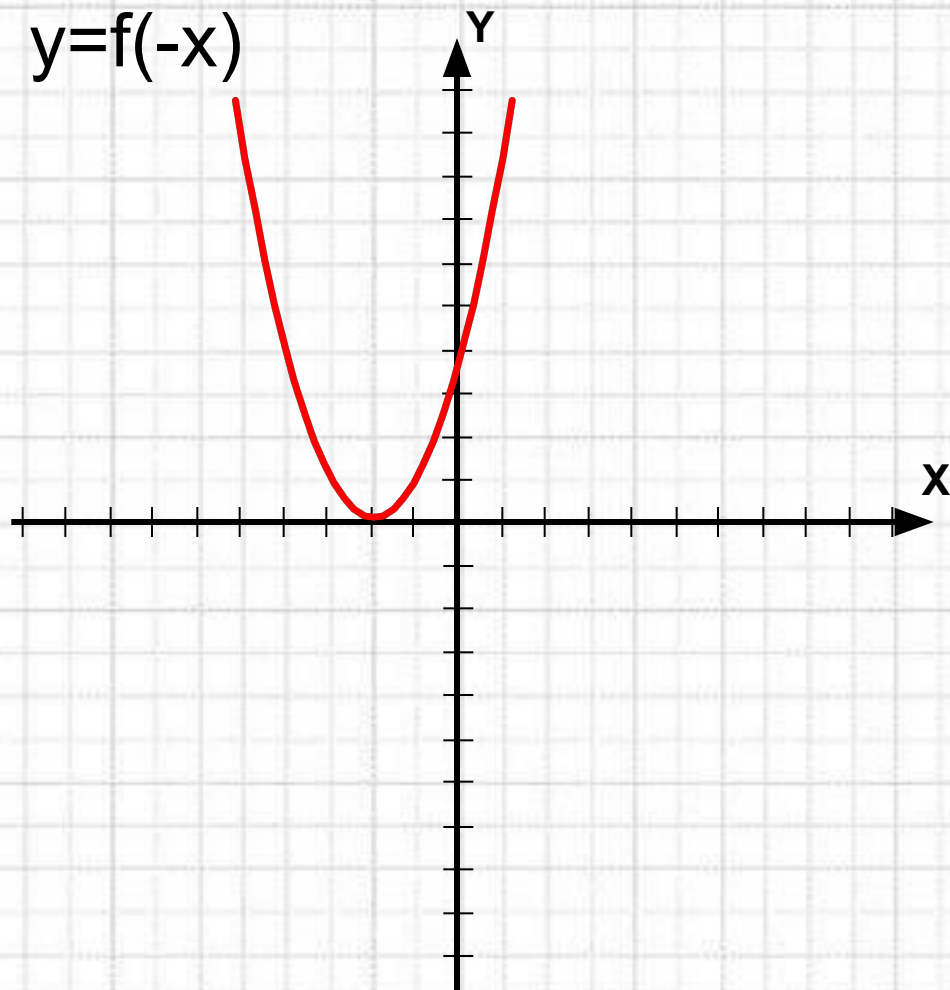
# Симметрия относительно осей координат



$$y=f(x)$$



$$y=f(-x)$$



$$y=f(x)$$

