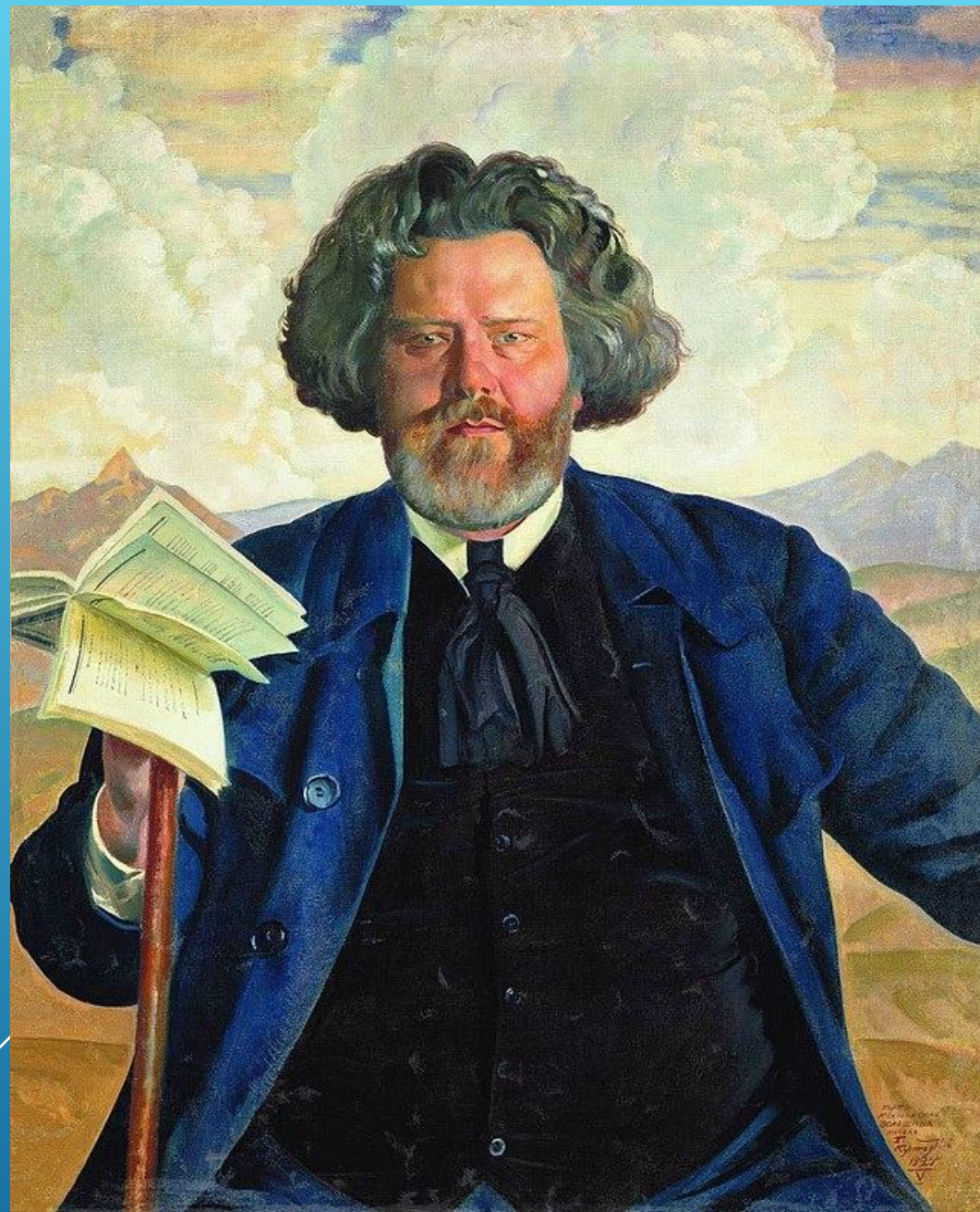


*Волошин
Максимилиан
Александрович*

1877-1932,

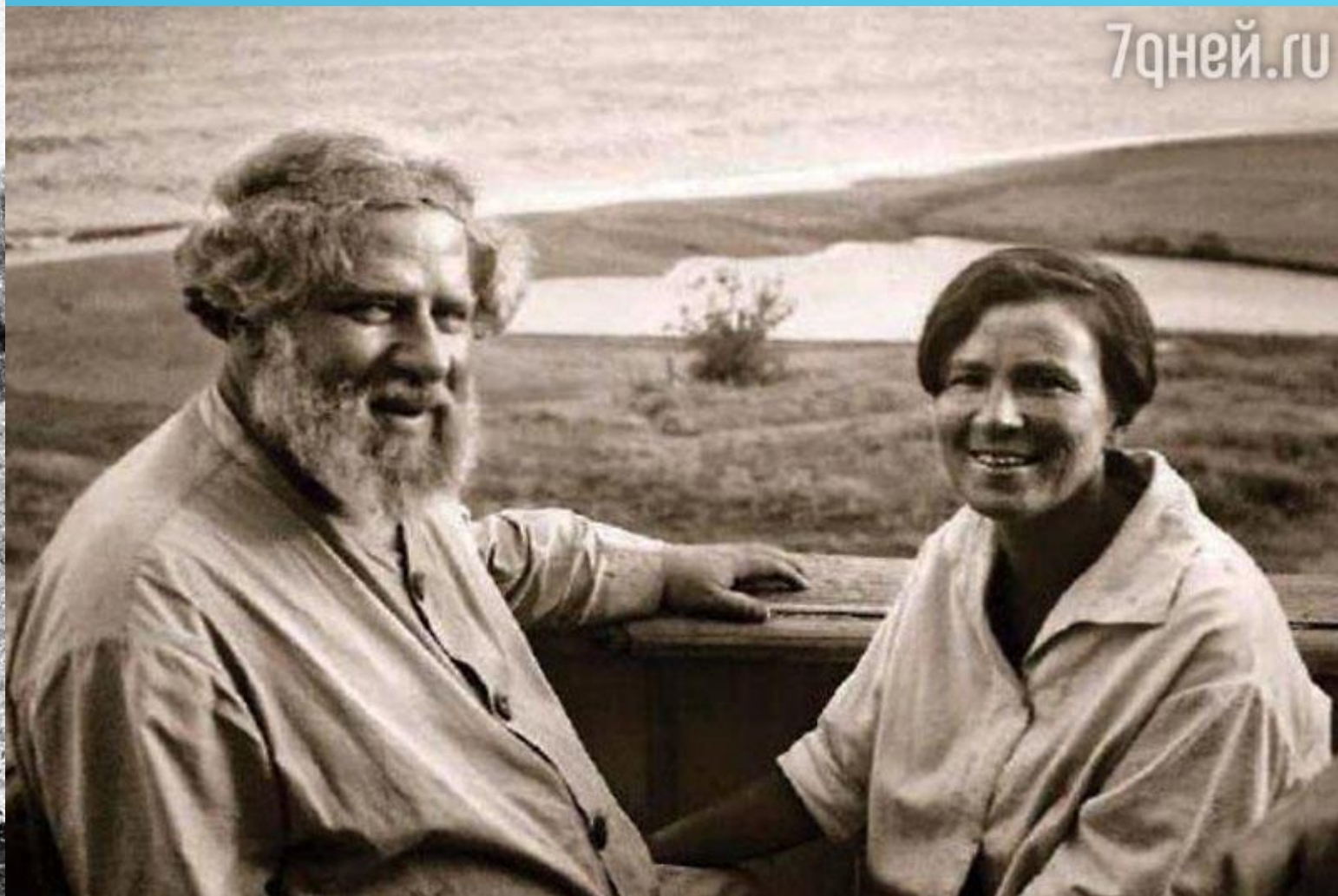
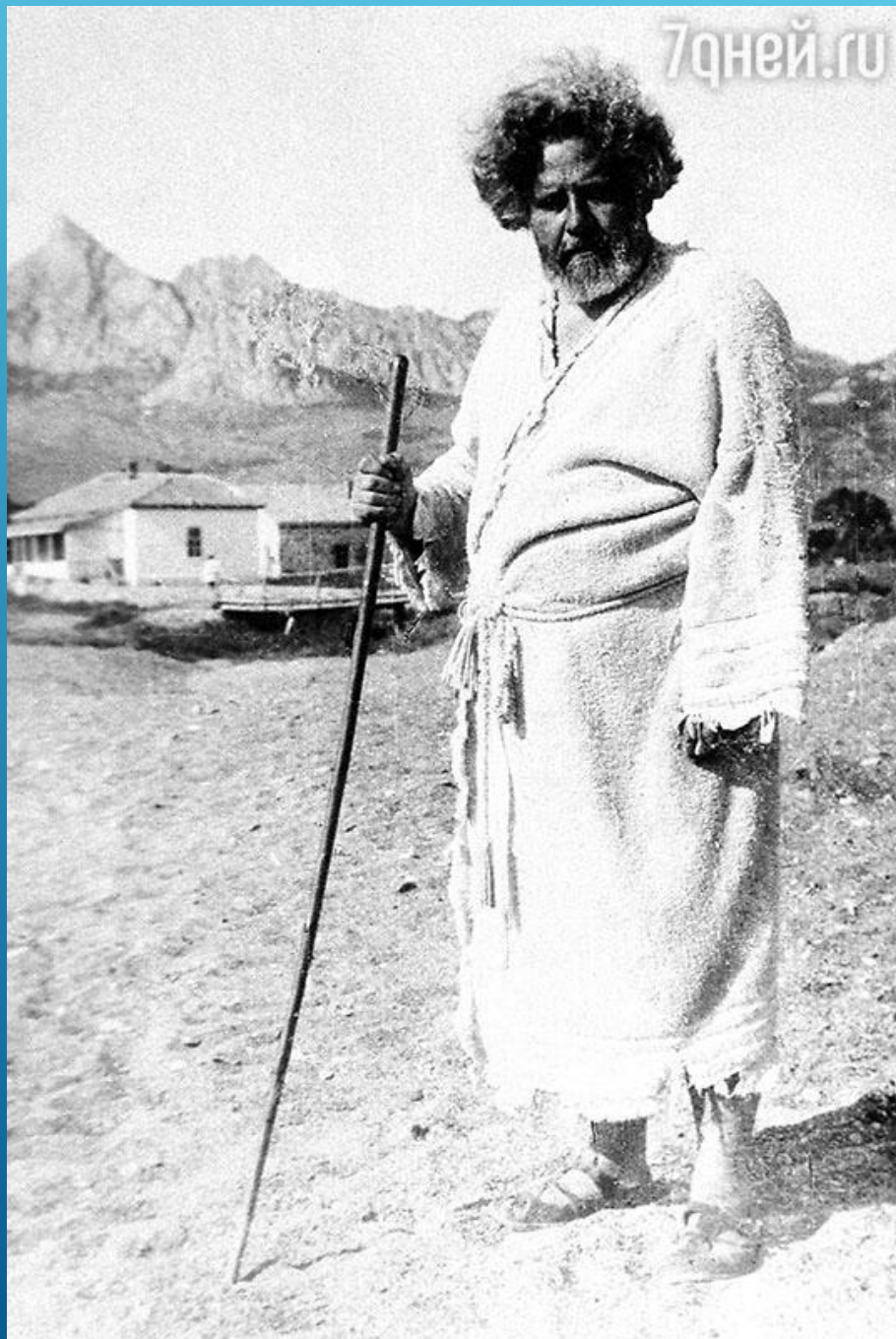
русский и советский поэт,
переводчик, художник-
пейзажист,
художественный и
литературный критик.



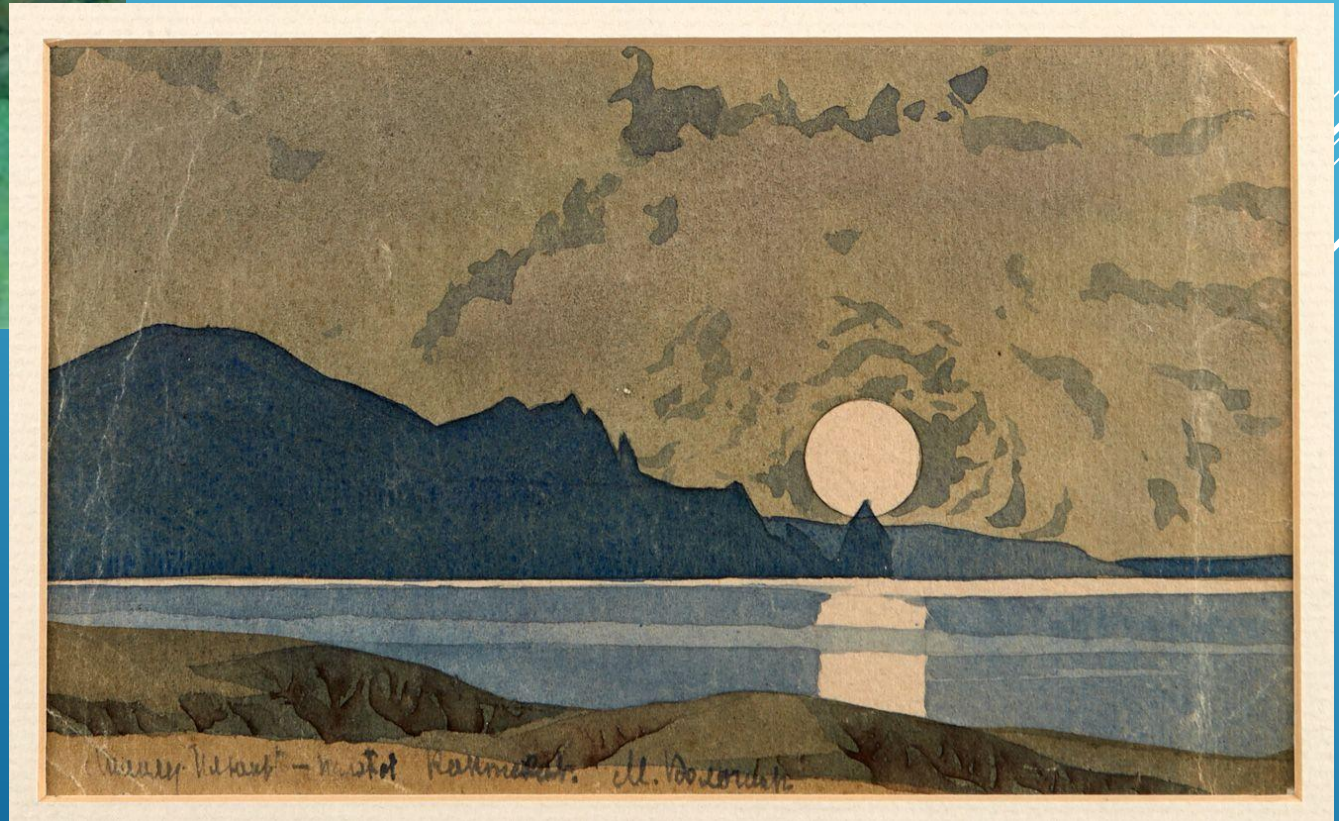


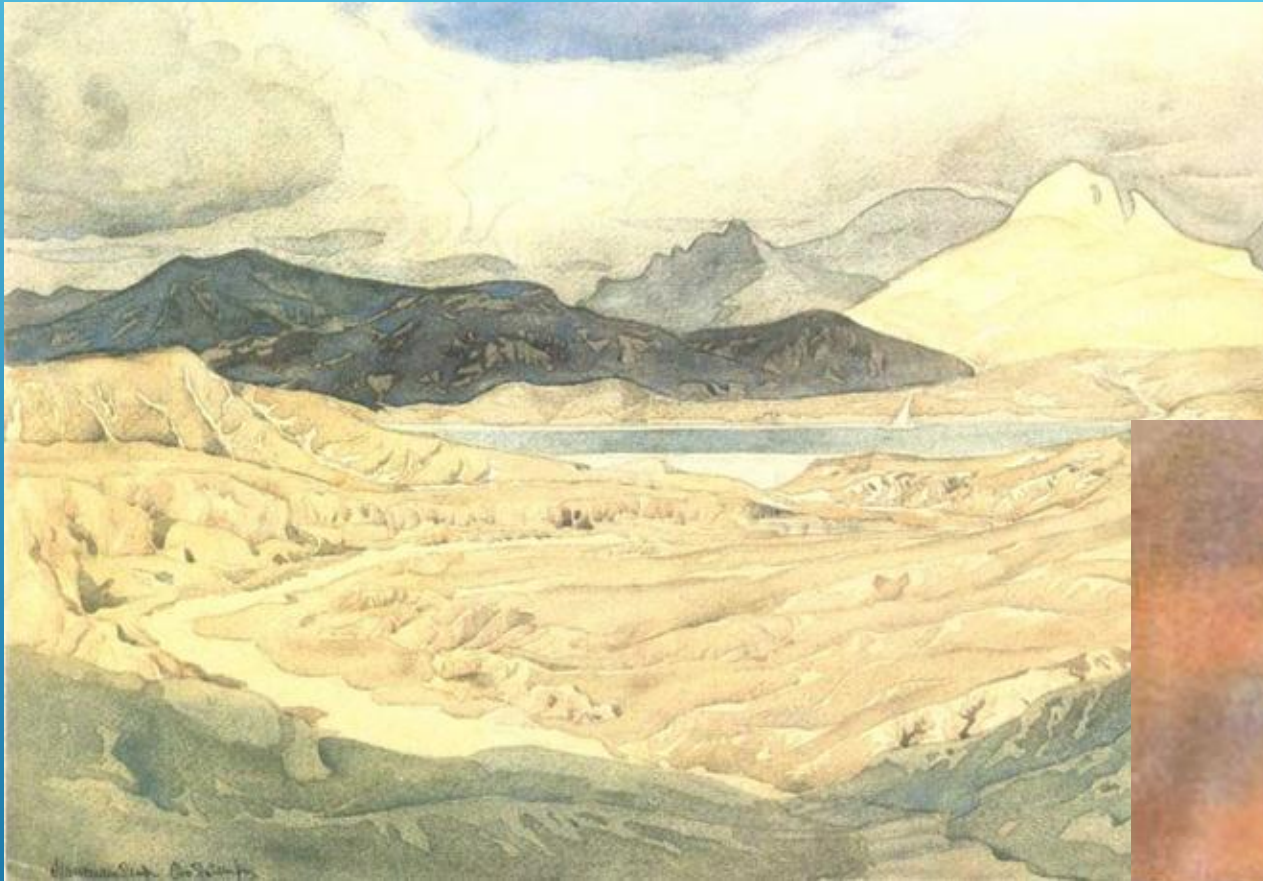
МАМА ПОЭТА
ЕЛЕНА
ОТТОБАЛЬДОВНА

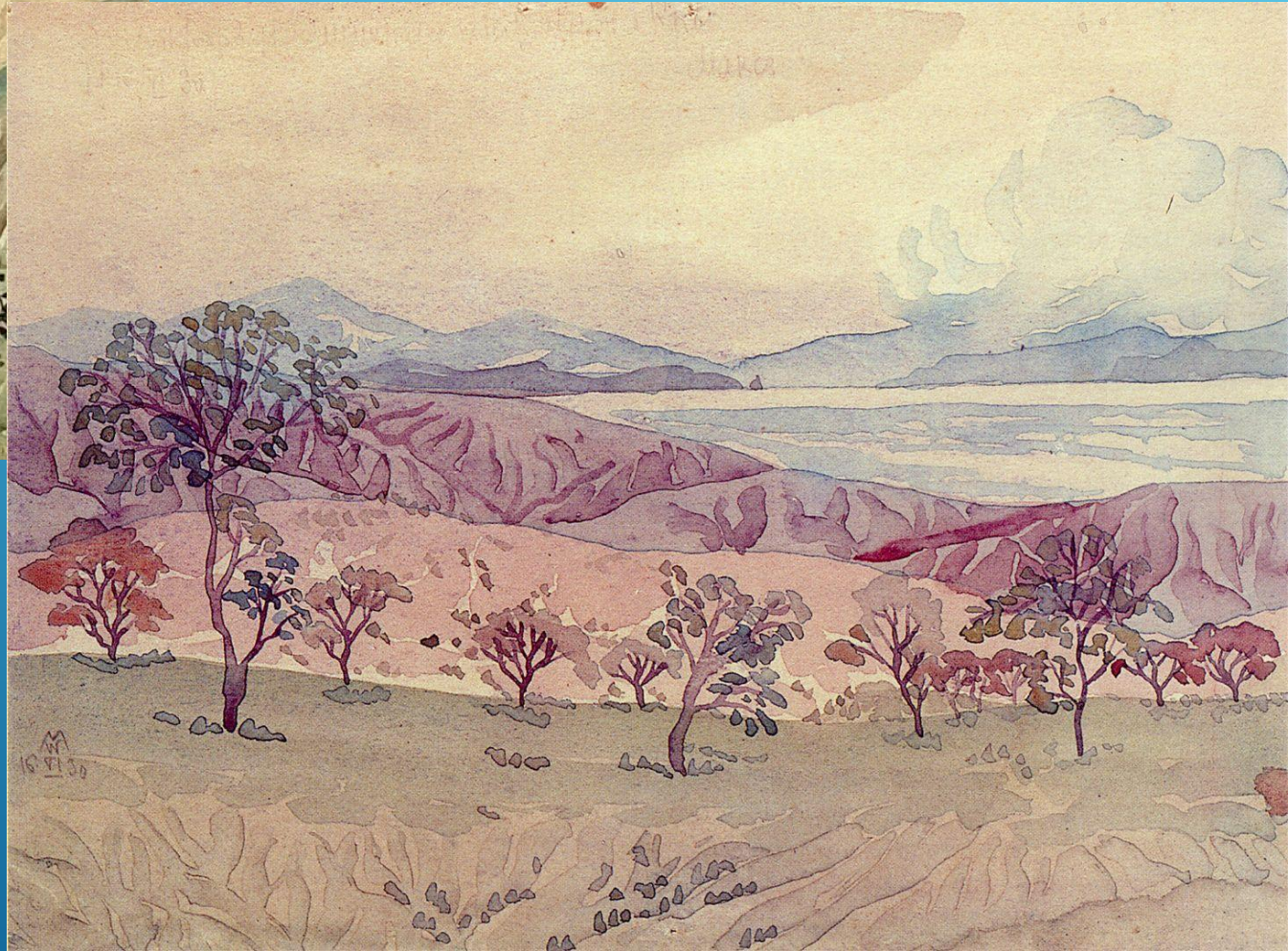




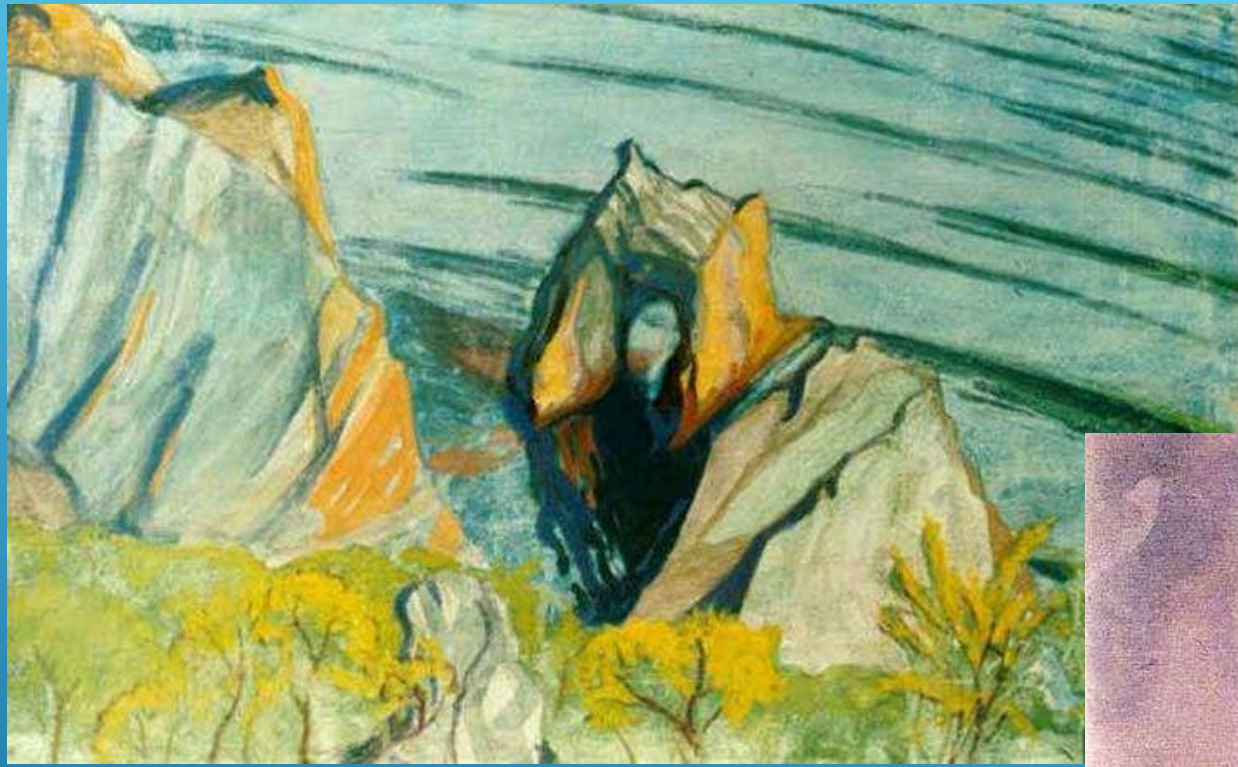


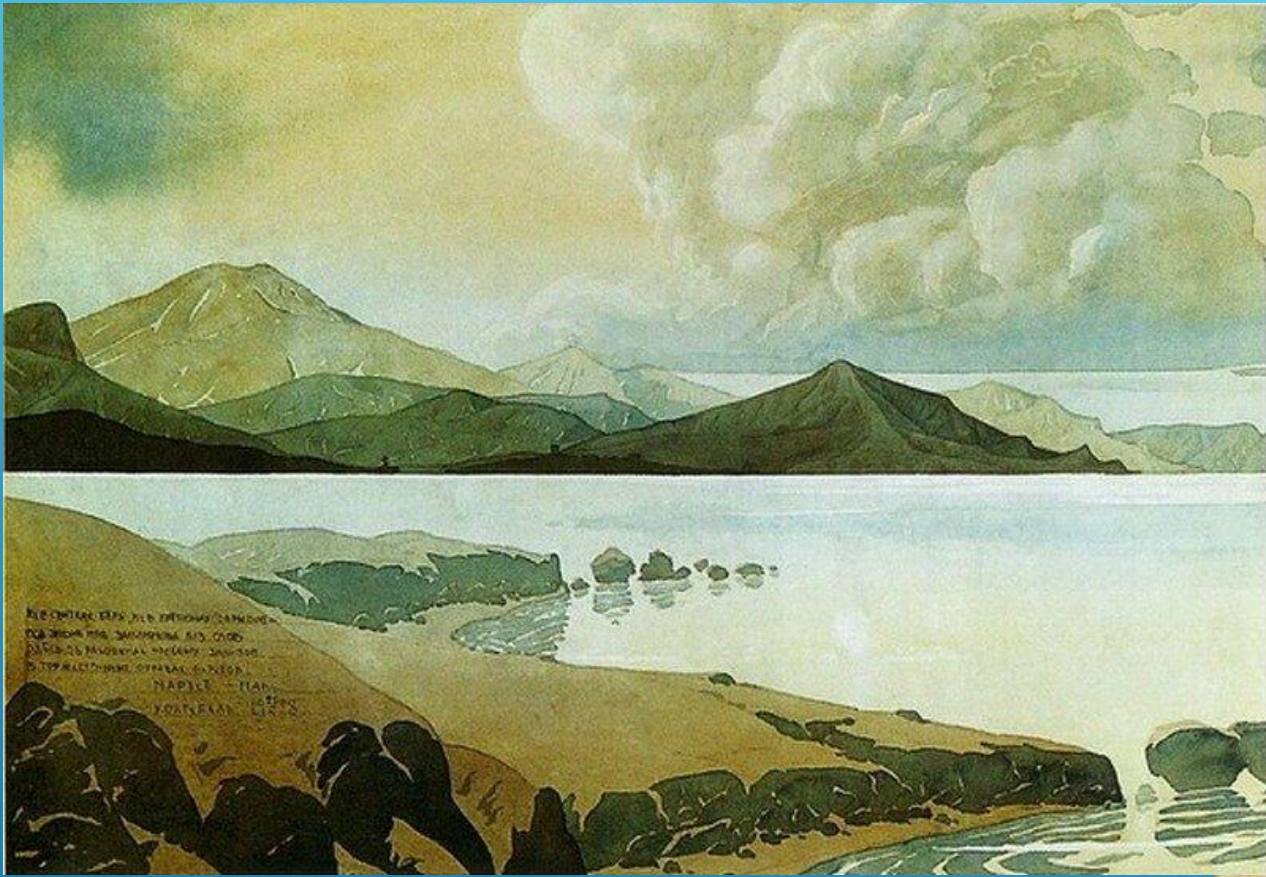


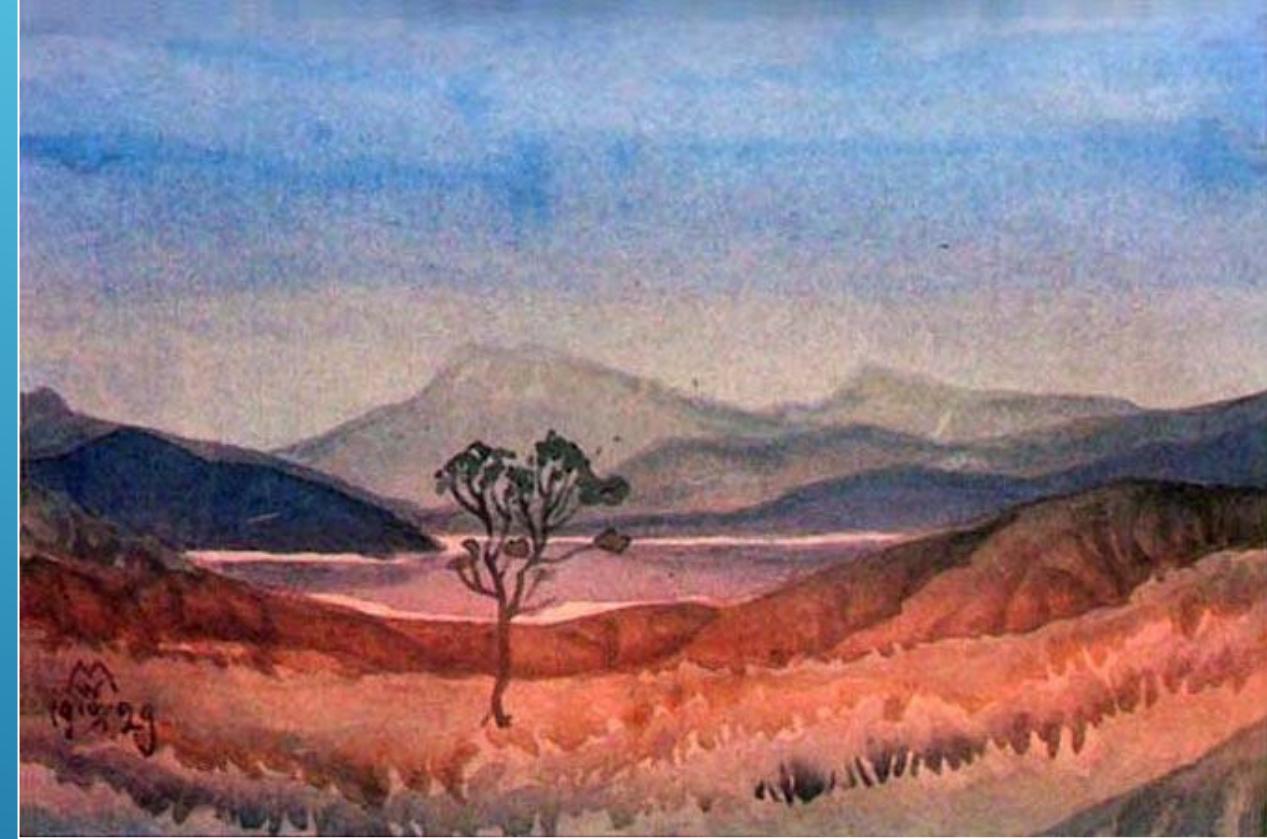


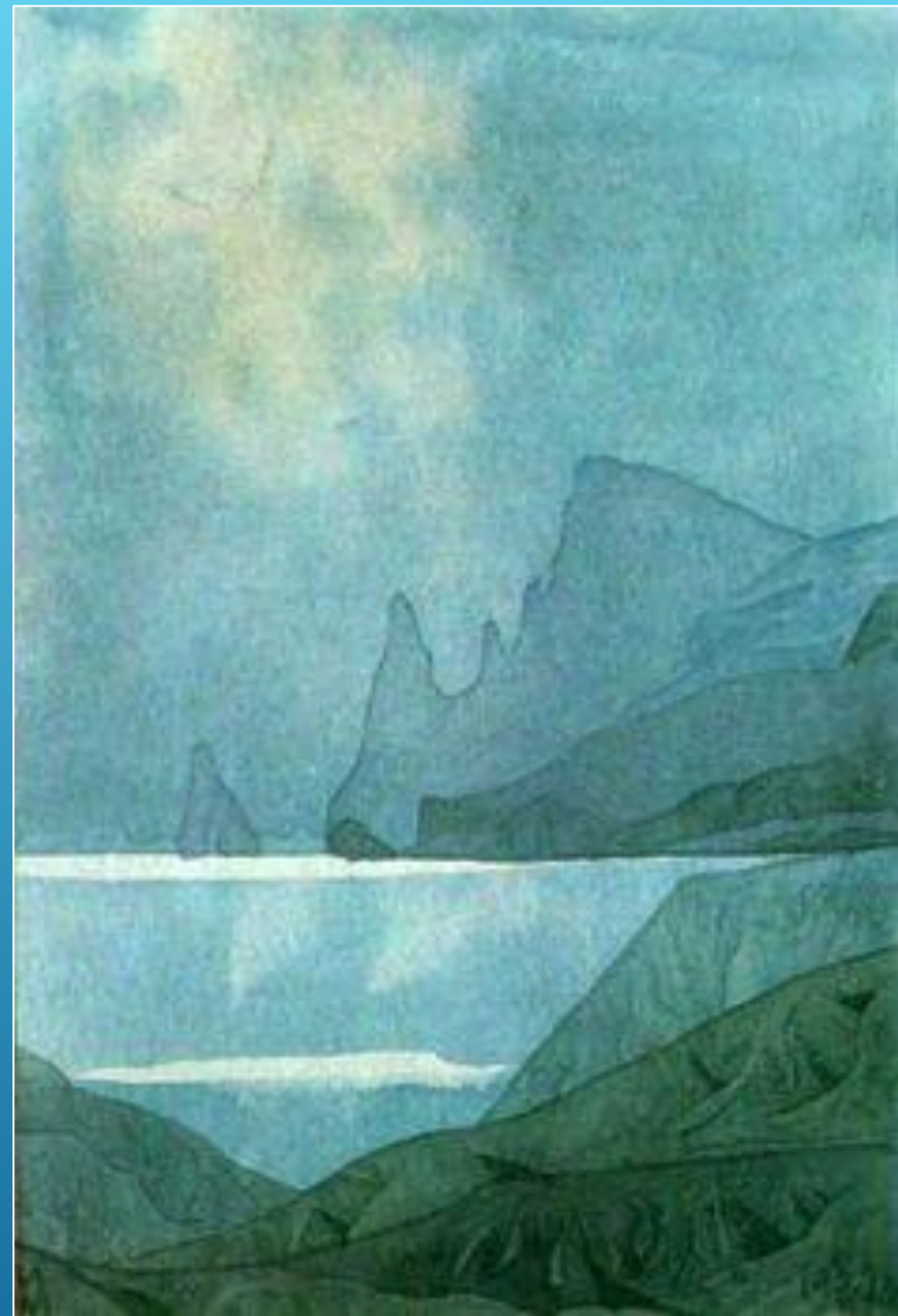













*ПОХОРОНЕН НА ВЕРШИНЕ
ПРИМОРСКОГО ХОЛМА КУЧУК-
ЯНЬШАР (КОКТЕБЕЛЬ)*



Практическое занятие №6.

*Выразительное чтение
стихотворений Максимилиана
Волошина по выбору*

A decorative graphic element consisting of several parallel white lines of varying lengths, slanted upwards from left to right, located in the bottom right corner of the slide.