

# TOBACCO DISEASES

Checked by: Musaeva M.

Prepared by: Zhamanbay A.

Balabek A.

# RHIZOCTONIA SOLANI KUHN.

- Black (Deuteromycetes class, Mycelia sterilia list), *Pythium debaryanum*
- Hesse. (The number of class Oomycetes Peronosporales). rot pain - *Rhizoctonia solani* Kuhn.



- Infection Fund contaminated soil, greenhouse
- a mixture of nutrients, disease or plant.  
Agents of cabbage, tomatoes, cucumbers and other plant.

# THIELAVIOPSIS BASICOLA FERR

- ◉ Black root rot - *Thielaviopsis basicola* Ferr. (Deuteromycetes class, Hyphomycetales series)



# PERONOSPORA TABACINA ADAM

- The disease, sweet tobacco and other tobacco black corner, tomatoes,
- Infection transmitted over long distances
- source can lead to re-infectionant and black necklace.



# PSEUDOMONAS SYRINGAE PV. TABACI

- ◉ Colibacillosis (alapestenw) - *Pseudomonas syringae* pv. *tabaci*
- ◉ (Dowson). In all areas, especially in areas with high humidity common.
- ◉ The disease leads to the deterioration of the quality of vegetable fast lead.

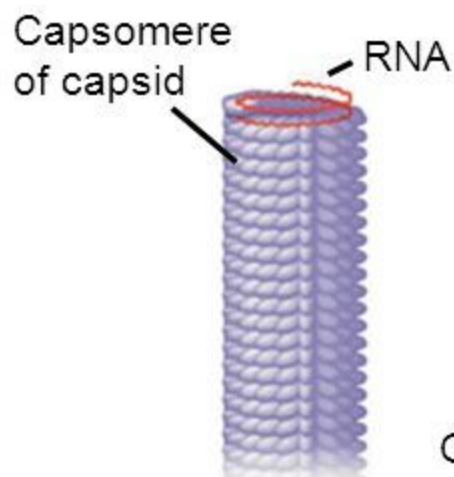


# TOBACCO MOSAIC VIRUS (NICOTIANA VIRUS 1 SMITH).

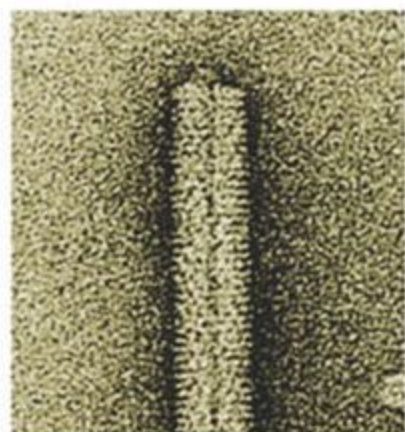
- Tobacco *mosaic* Tobacco mosaic virus (Nicotiana virus 1 Smith).
- ◉ Mosaic harmful and widespread disease. A high degree of efficiency
- ◉ damage. Brittle leaves.



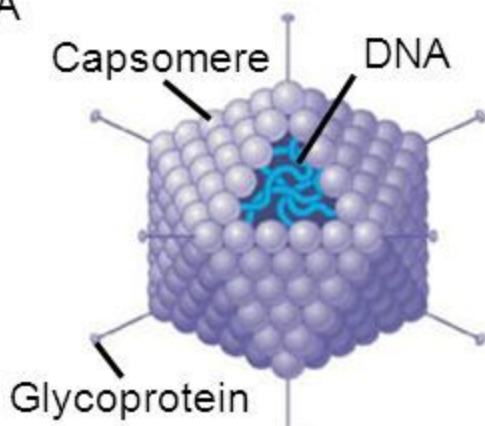
# A **capsid** is the protein shell that encloses the viral genome



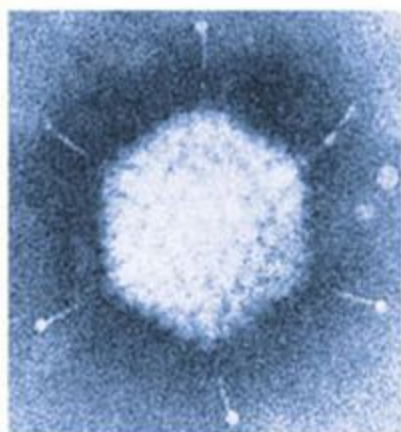
18 × 250 nm



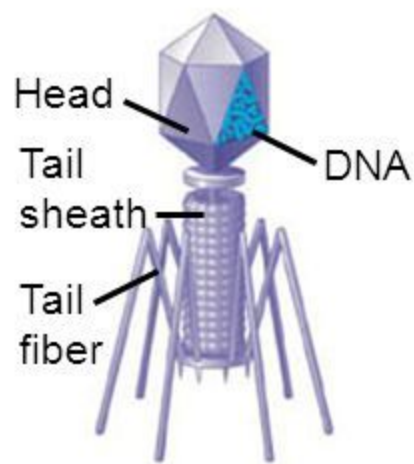
20 nm



70–90 nm (diameter)



50 nm



80 × 225 nm



50 nm

Figure 18.4a, b (a) Tobacco mosaic virus (b) Adenoviruses (d) Bacteriophage T4