



WARNER BROS.  
STUDIO TOUR  
LONDON

THE  
MAKING OF

HAPPY BIRTHDAY

DINNER IN THE

GREAT HALL





**In 2010, after finishing shooting the final 2 parts of the movie Harry Potter and the Deathly Hallows, the crew was faced with the fact that they have left a treasure trove of thousands of complex and beautiful artifacts.**







*So Warner Bros. Studio Tour London has decided to preserve and showcase these iconic props, costumes and scenery to the Harry Potter fans could experience the magic of filmmaking first hand. Also many of the members of the original cast were gathered and recorded his memories about the shooting. In the end, 31 March 2012, the Museum of Harry Potter in London first opened its doors to its visitors.*

H A P P Y   H O L I D A Y S

Harry Potter





**Museum Warner Bros. Studio Tour London: The Making of Harry Potter offers a unique opportunity to explore the huge pavilions filled with original sets, props, animationname models as well as examples of exciting special effects that were used in the filming of movies about Harry Potter.**



# The infrastructure of the Museum of Harry Potter in London

## Exhibition venues:

At the Museum The Making of Harry Potter offers you 2 covered pavilion, where there are :

- 1.The great hall of Hogwarts;
- 2.Lounge Gryffindor;
- 3.Potions Class;
- 4.The Dumbledore's Office;
- 5.The Office Of Dolores Umbridge;
- 6.The hatch in the Secret room;
- 7.Hut Of Hagrid;
- 8.Room magic wands;
- 9.Diagon alley with showcases;
- 10.The Ministry Of Magic;
- 11.The kitchen of the Weasley family, and much more;

*In open areas you can see:*

**1. House Harry Potter and Privet Drive;**

**2. Bus Night knight;**

**3. The village of Hogsmeade from the Shrieking shack;**

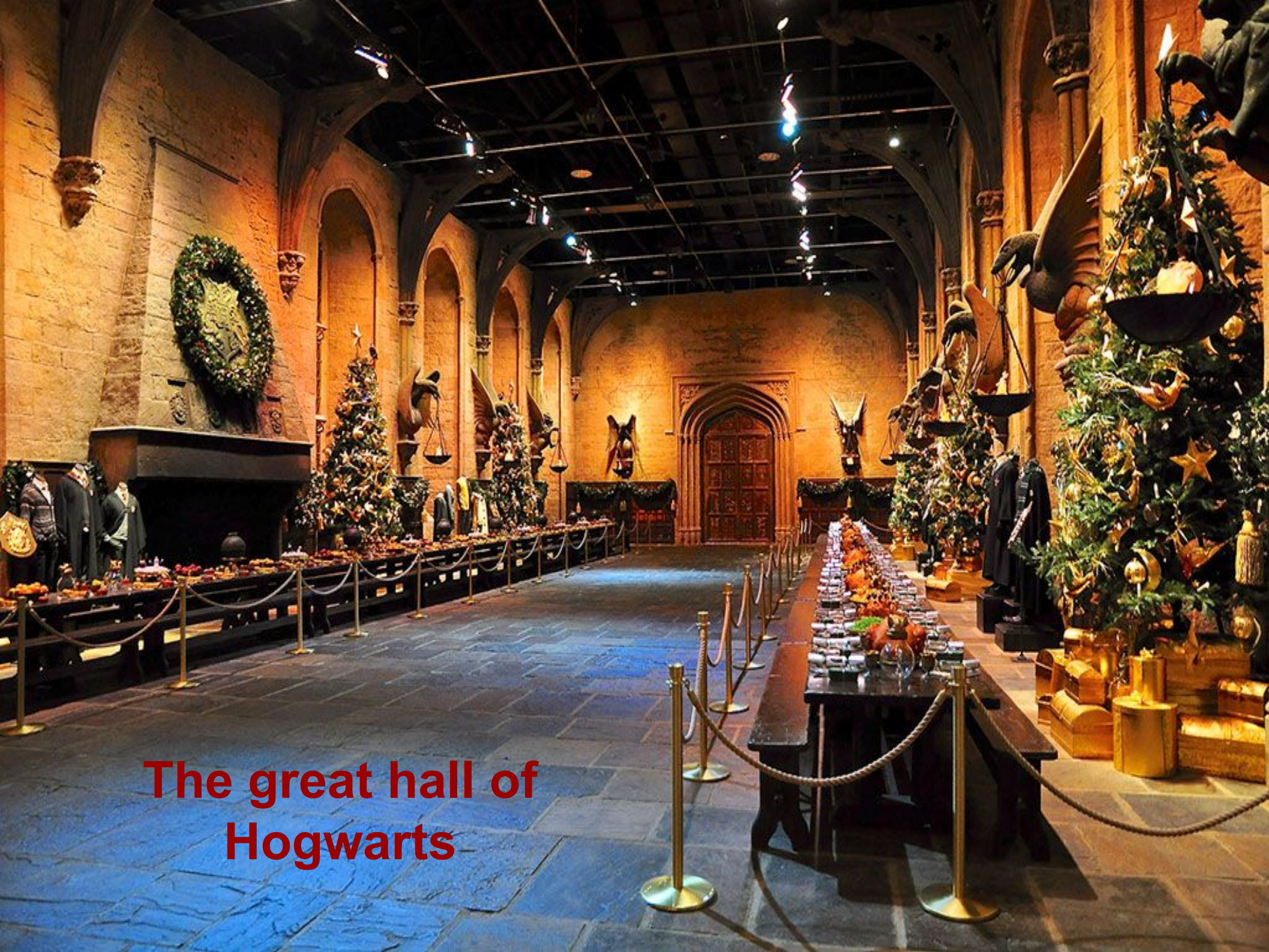
**4. The Bridge At Hogwarts;**

**5. Family vault of the family Redlow;**

**6. Bar Three Brooms with a creamy beer;  
And of course the souvenir shop located at  
the entrance to the Studio, so to go there**







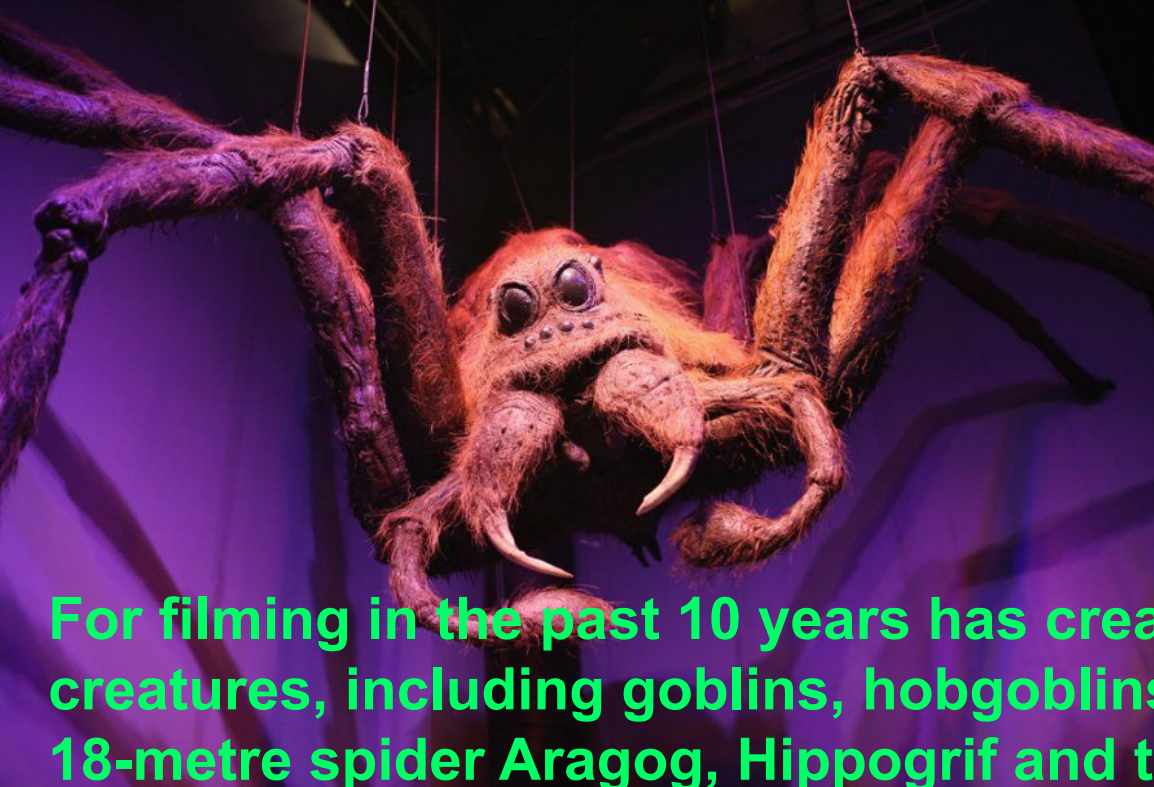
**The great hall of  
Hogwarts**



# Special effects, animatory models and props:







For filming in the past 10 years has created more than 200 mythical creatures, including goblins, hobgoblins, and elves. You will also see an 18-metre spider Aragog, Hippogrif and the Monstrous book of monsters







**lounge Gryffindor**

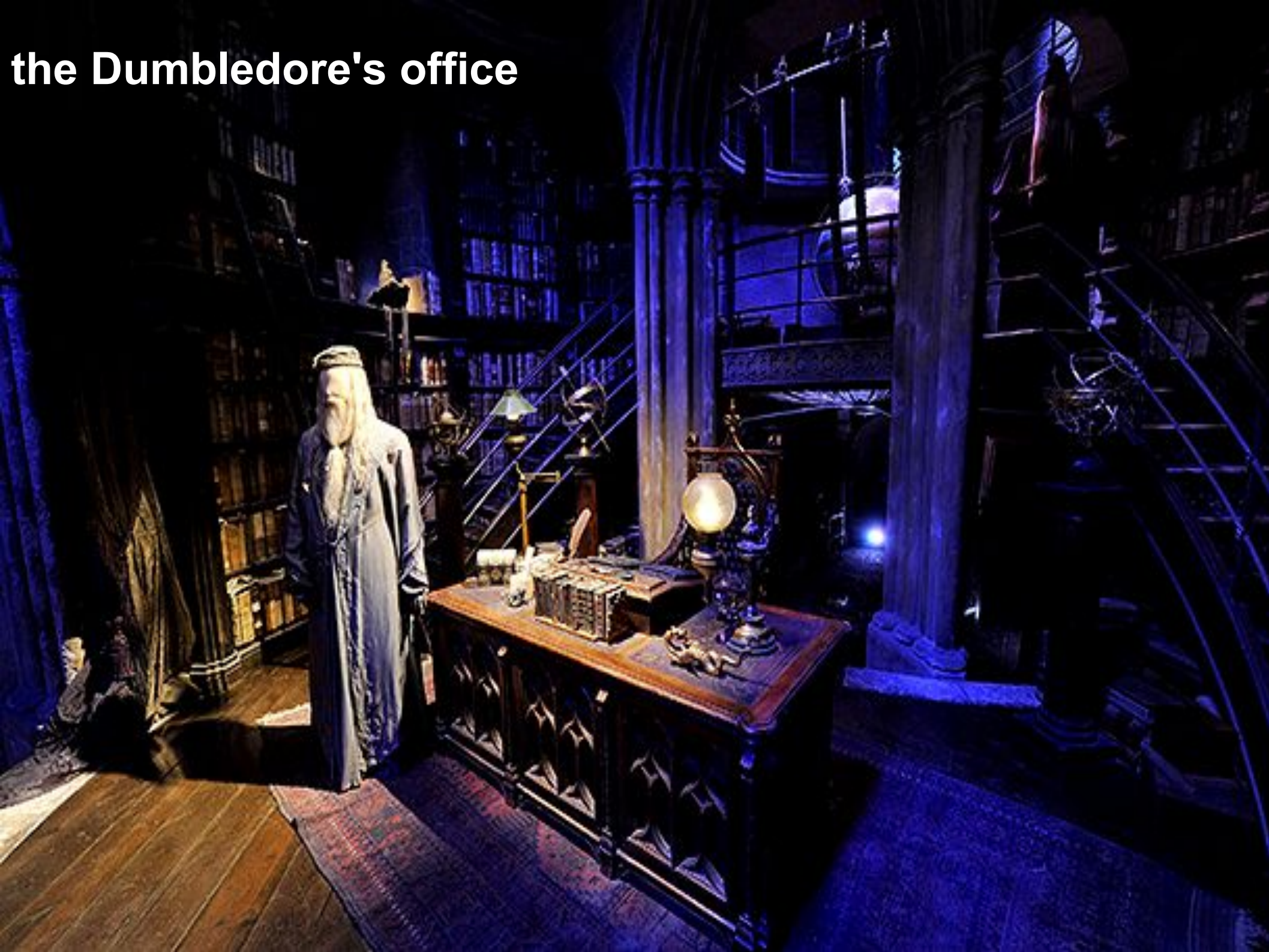




potions class



the Dumbledore's office





*the kitchen in the  
Weasley house*

