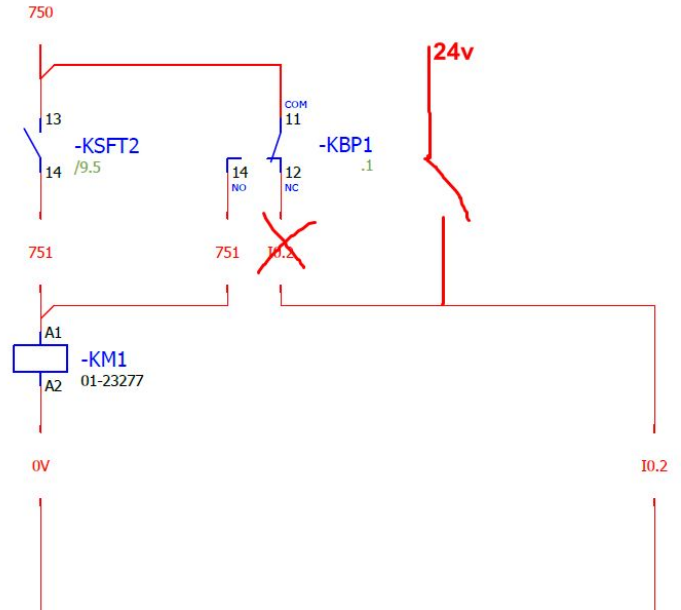
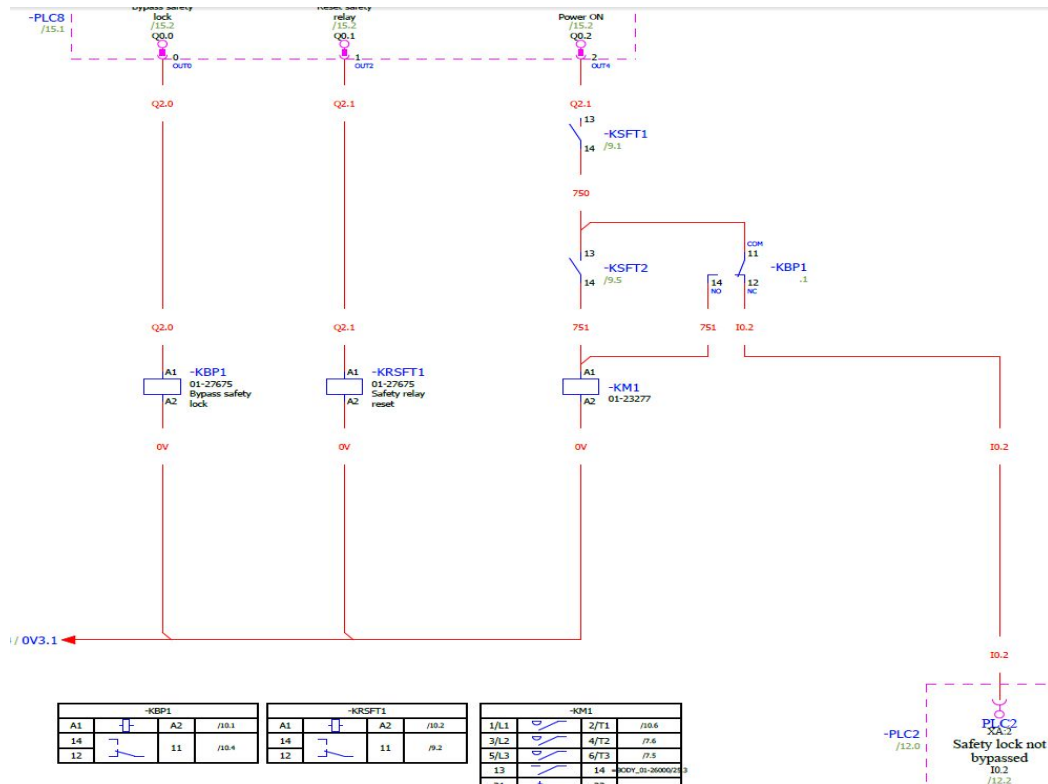


For safety door bypass relay, we should separate bypass and feedback to PLC

We should select relay with two channel

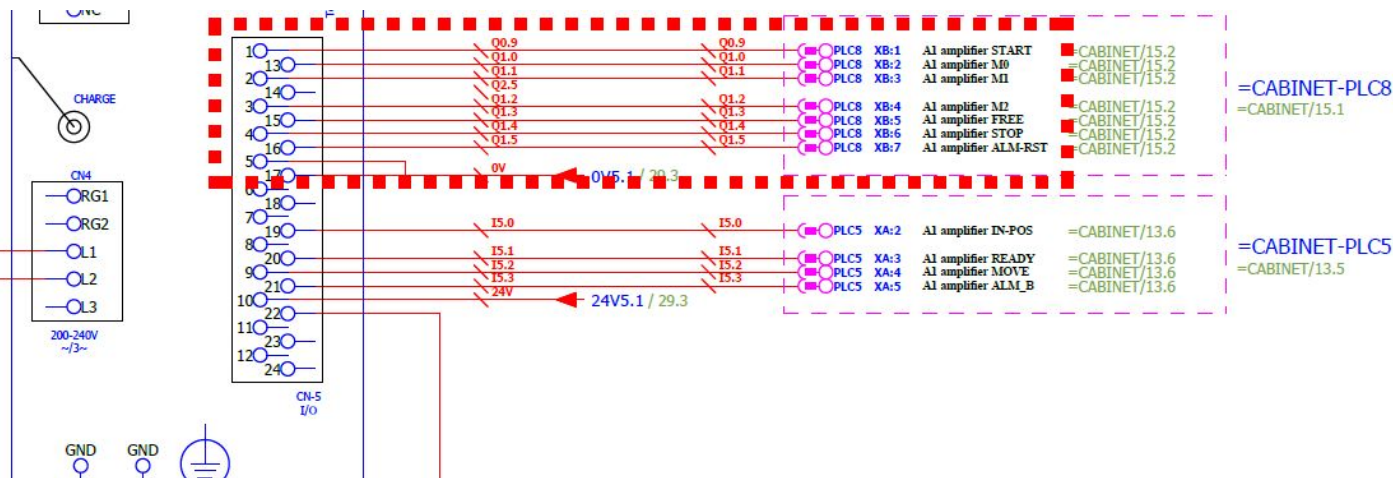
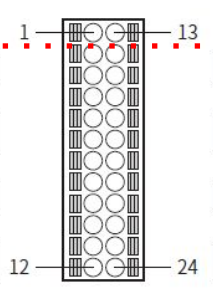


Please change the pin assign for oriental motor driver , for the one we use, pin 1/2/13/14 is only used for pulse input , We should start input from IN4 (PIN3) ,please check use manual

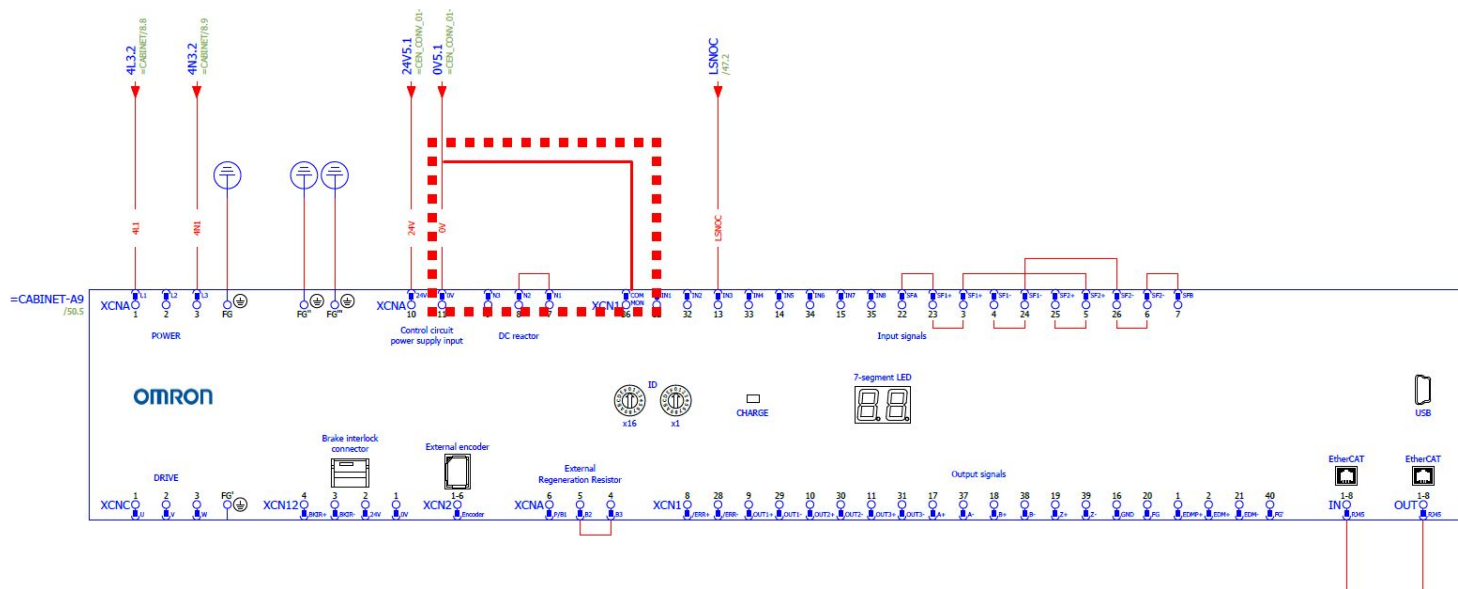
引脚No.	信号名	内容※	引脚No.	信号名	内容※
1	CW+ [PLS+]	CW脉冲输入+ [脉冲输入+]	13	CW- [PLS-]	CW脉冲输入- [脉冲输入-]
2	CCW+ [DIR+]	CCW脉冲输入+ [旋转方向输入+]	14	CCW- [DIR-]	CCW脉冲输入- [旋转方向输入-]
3	IN4	控制输入4 (ZHOME)	15	IN5	控制输入5 (FREE)
4	IN6	控制输入6 (STOP)	16	IN7	控制输入7 (ALM-RST)
5	IN-COM [0-7]	IN0 ~IN7 输入COM	17	IN-COM [8-9]	IN8、IN9 输入COM
6	IN8	控制输入8 (FW-JOG)	18	IN9	控制输入9 (RV-JOG)
7	OUT0	控制输出0 (HOME-END)	19	OUT1	控制输出1 (IN-POS)
8	OUT2	控制输出2 (PLS-RDY)	20	OUT3	控制输出3 (READY)
9	OUT4	控制输出4 (MOVE)	21	OUT5	控制输出5 (ALM-B)
10	OUT-COM	输出COM	22	GND	接地
11	ASG+	A相脉冲输出+	23	ASG-	A相脉冲输出-
12	BSG+	B相脉冲输出+	24	BSG-	B相脉冲输出-

※ () 内为初始值。

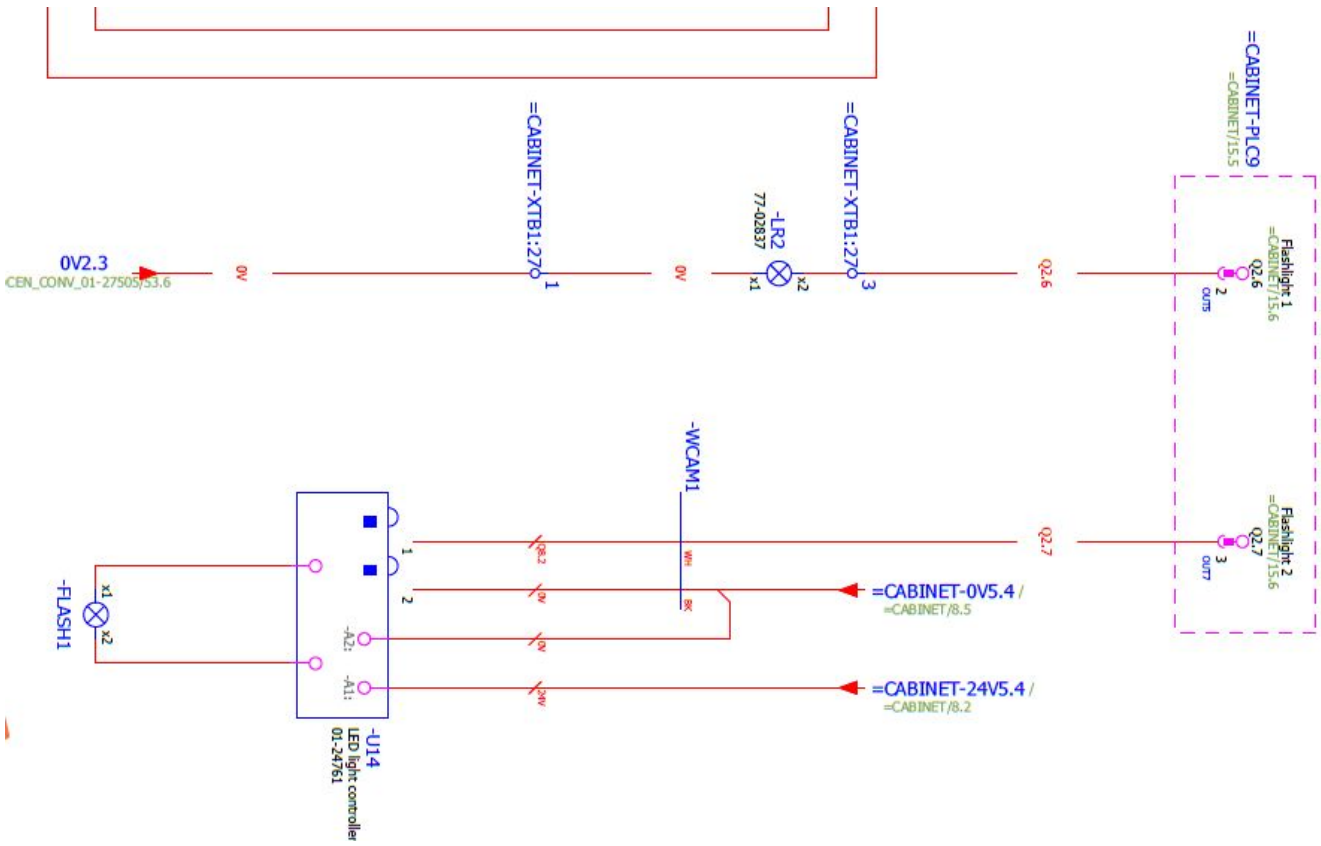
※ () 内为初始值。



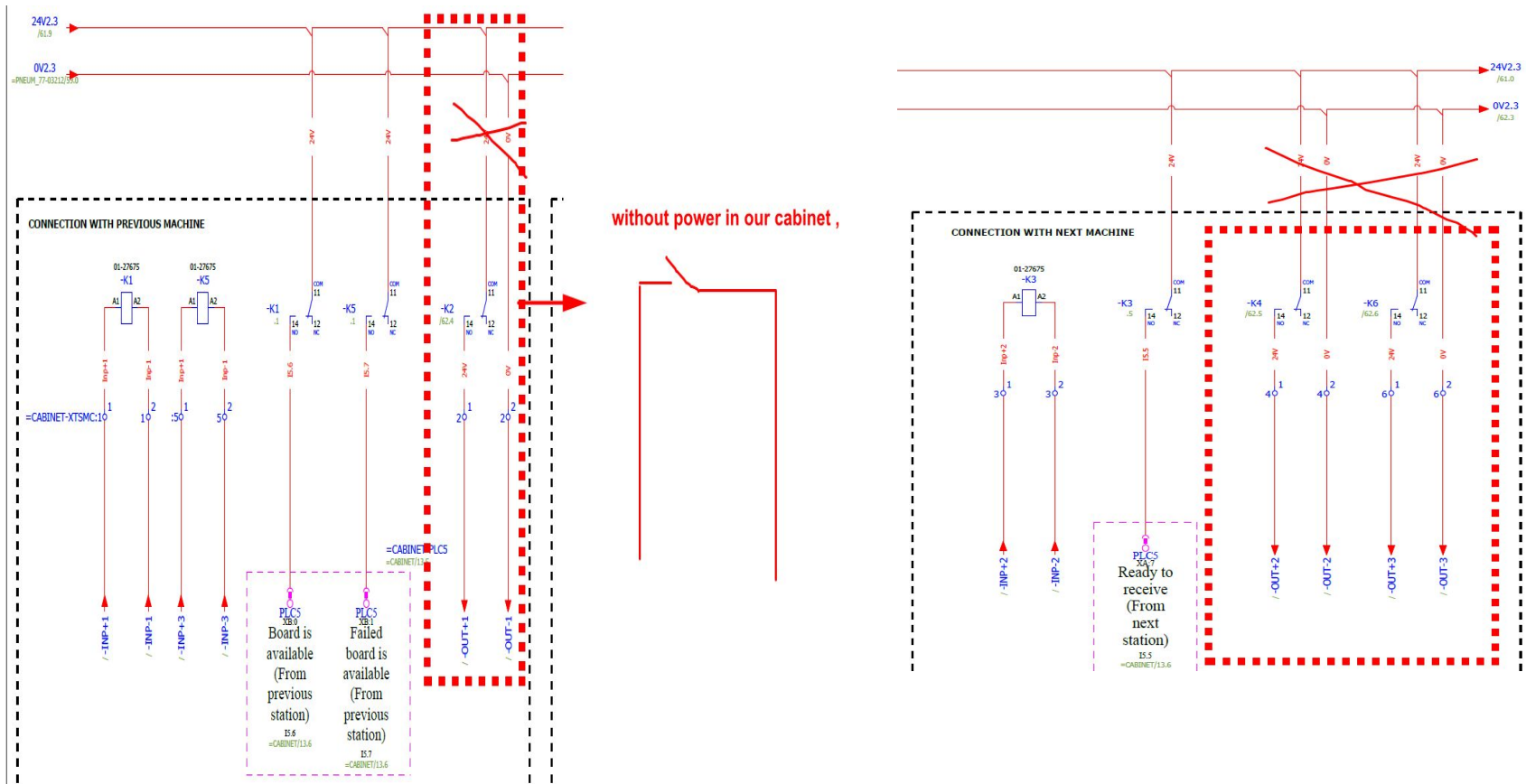
We 'd better assign 0v com for driver input signal ,for all the driver ,in case we use input signal



Please add terminals to wire for the camera light



For the signal to other machine ,can't connect with our power system ,just control their signal connect/cut



For the camera monitor , for power supply we need a special connector and for data ,we need DVI cable

Do we add the two item in BOM .for detail ,we can refer to PJC18-227

