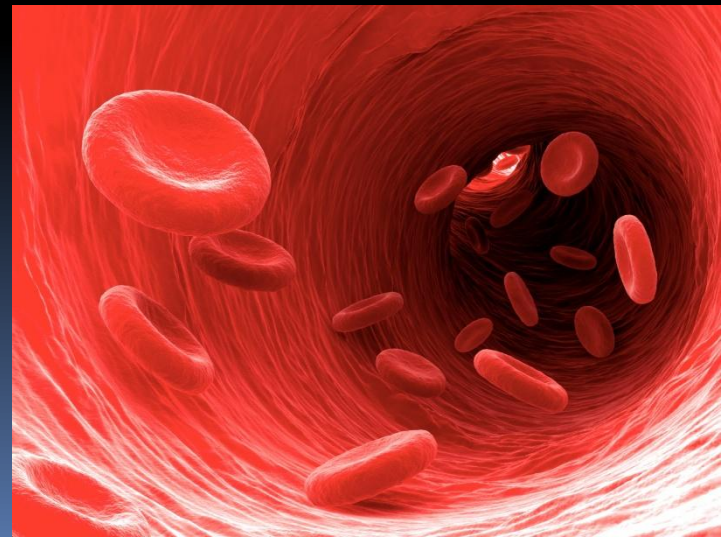


USE OF BLOOD EVIDENCE IN THE INVESTIGATION OF CRIMES





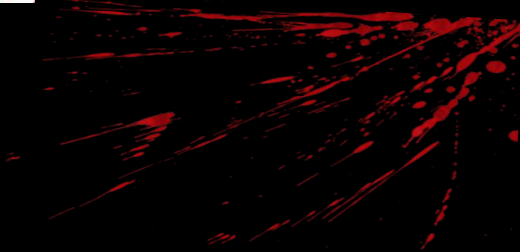
Blood – a movable liquid connective tissue of the internal environment of the organism, which consists of a liquid medium — plasma and suspended in her cells — formed elements.



Forms of traces of blood:



Puddles



Spray



Drops



Stains



Blots

Three ways to identify traces of blood:

1. Physical detection methods are used most often. They are based on the use of special or common technical means. In such cases, various types of lighting and optical devices, with which the traces become visible.






2. In the visual method, the traces of blood detected in the case where they have medium and large sizes and contrast with the surrounding objects of the environment (e.g., puddles, stains and streaks of blood).




3. Chemical methods are based on the influence of various reagents on the blood components and can be used in the study of large and medium-sized tracks.





Importance of the blood evidence in the investigation of crimes:



To investigate the crime, traces of blood are very important. It can be used to investigate different kinds and groups of crimes as violent (murder, robbery, rape, etc.) and non-violent (theft, traffic accident, animal cruelty, etc.).



**THANK YOU FOR YOUR
ATTENTION!**