

What day goes before Tuesday?

MONDAY

The word "MONDAY" is written in a bold, white, sans-serif font against a solid pink background. The letter 'O' is replaced by a pink donut with a hole in the center, topped with a generous amount of multi-colored sprinkles. The donut is positioned centrally between the 'M' and 'N'.

What day goes before Friday?



What day goes before Wednesday?

Tuesday

What day goes before Monday?

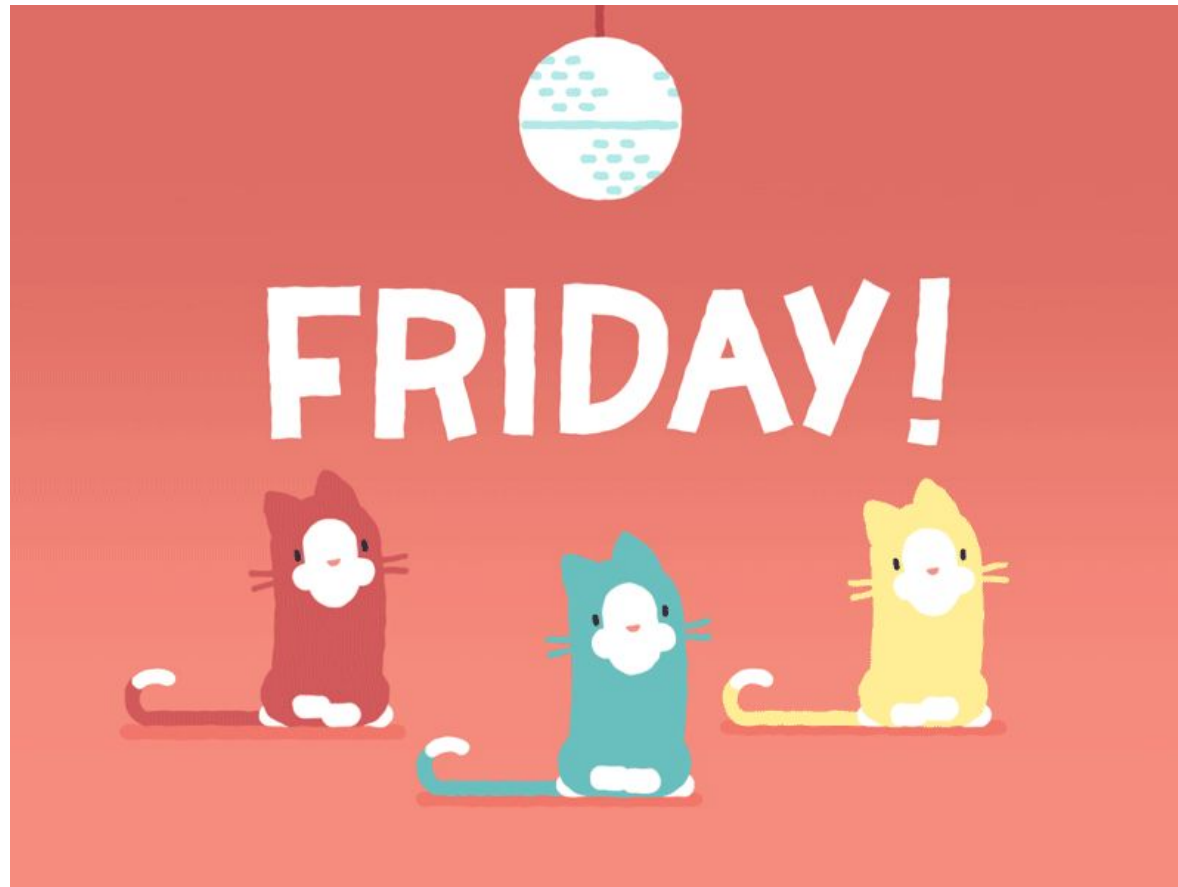


What day goes before Thursday?

wednesday

© Alamy

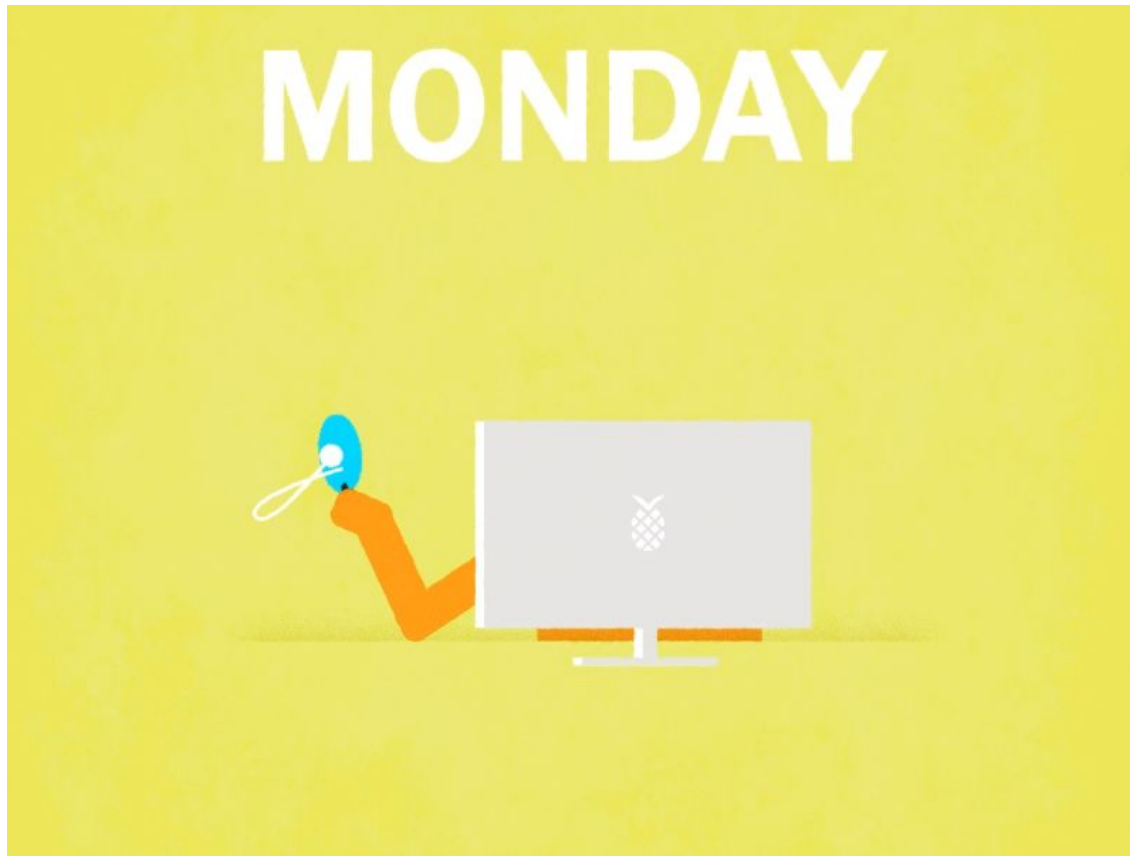
What day goes before Saturday?



What day goes before Sunday?

Saturday

What day goes after Sunday?



What day goes after Wednesday?



What day goes after Friday?



What day goes after Monday?

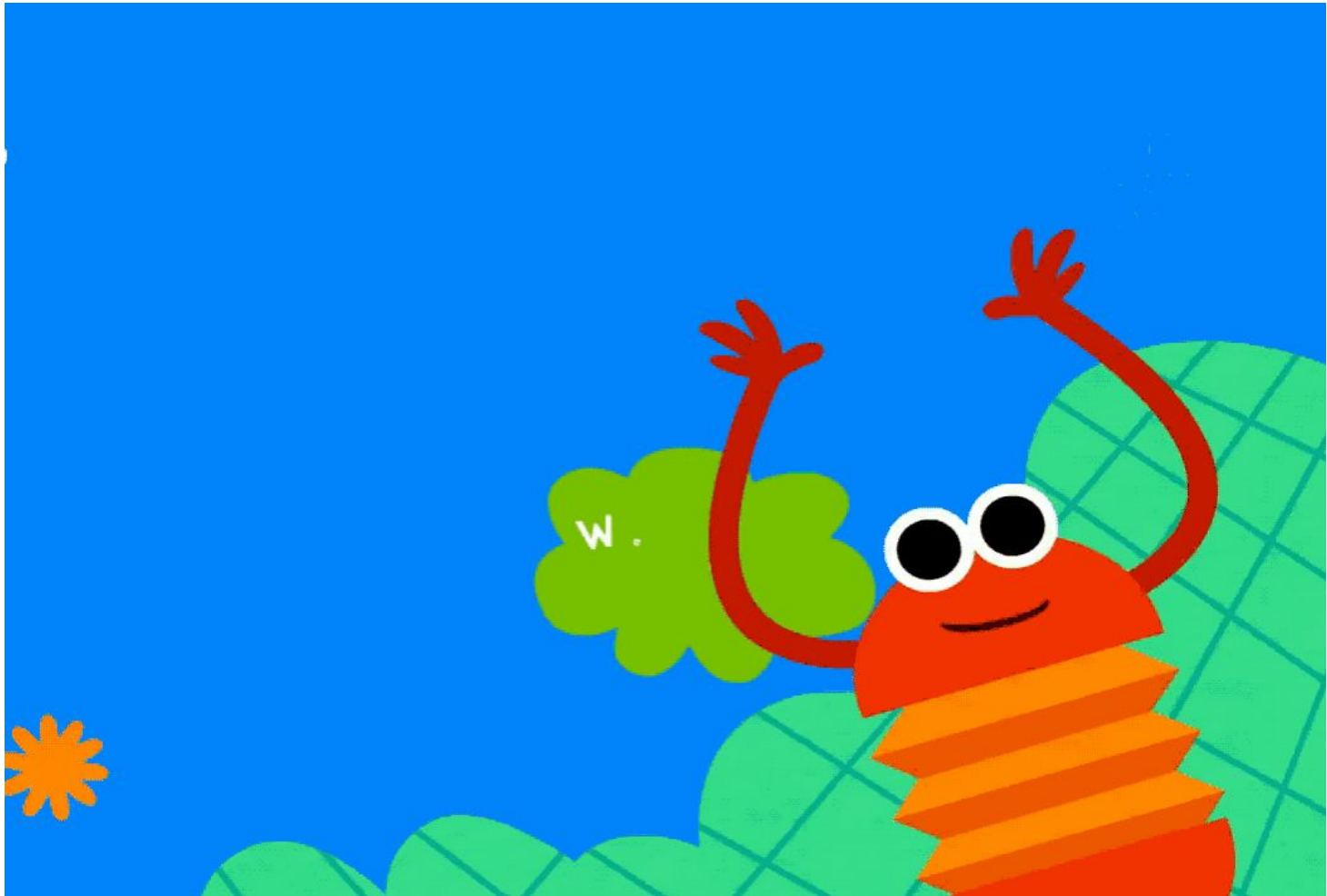


TUESDAY

What day goes after Saturday?



What day goes after Tuesday?



What day goes after Thursday?

