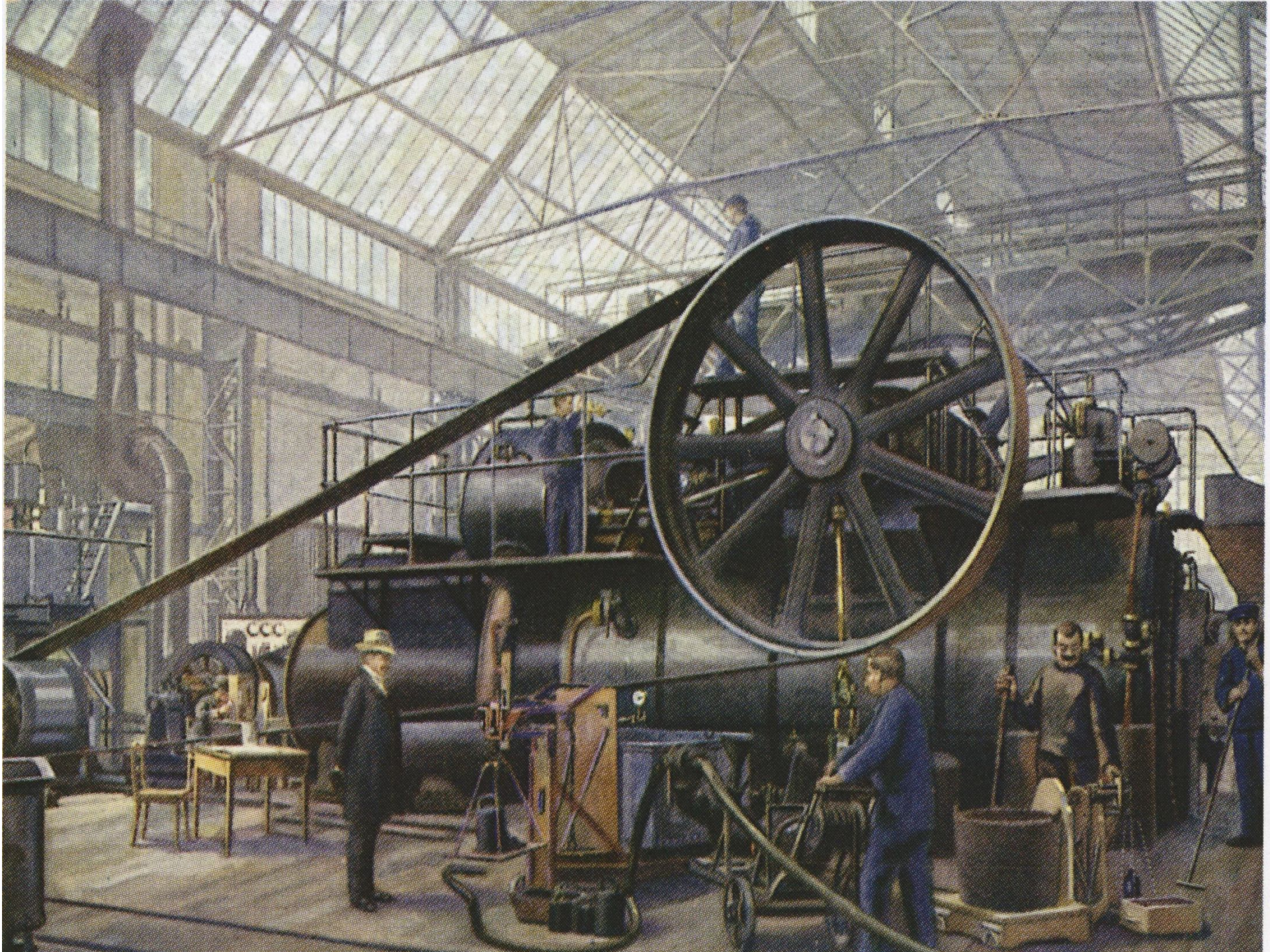
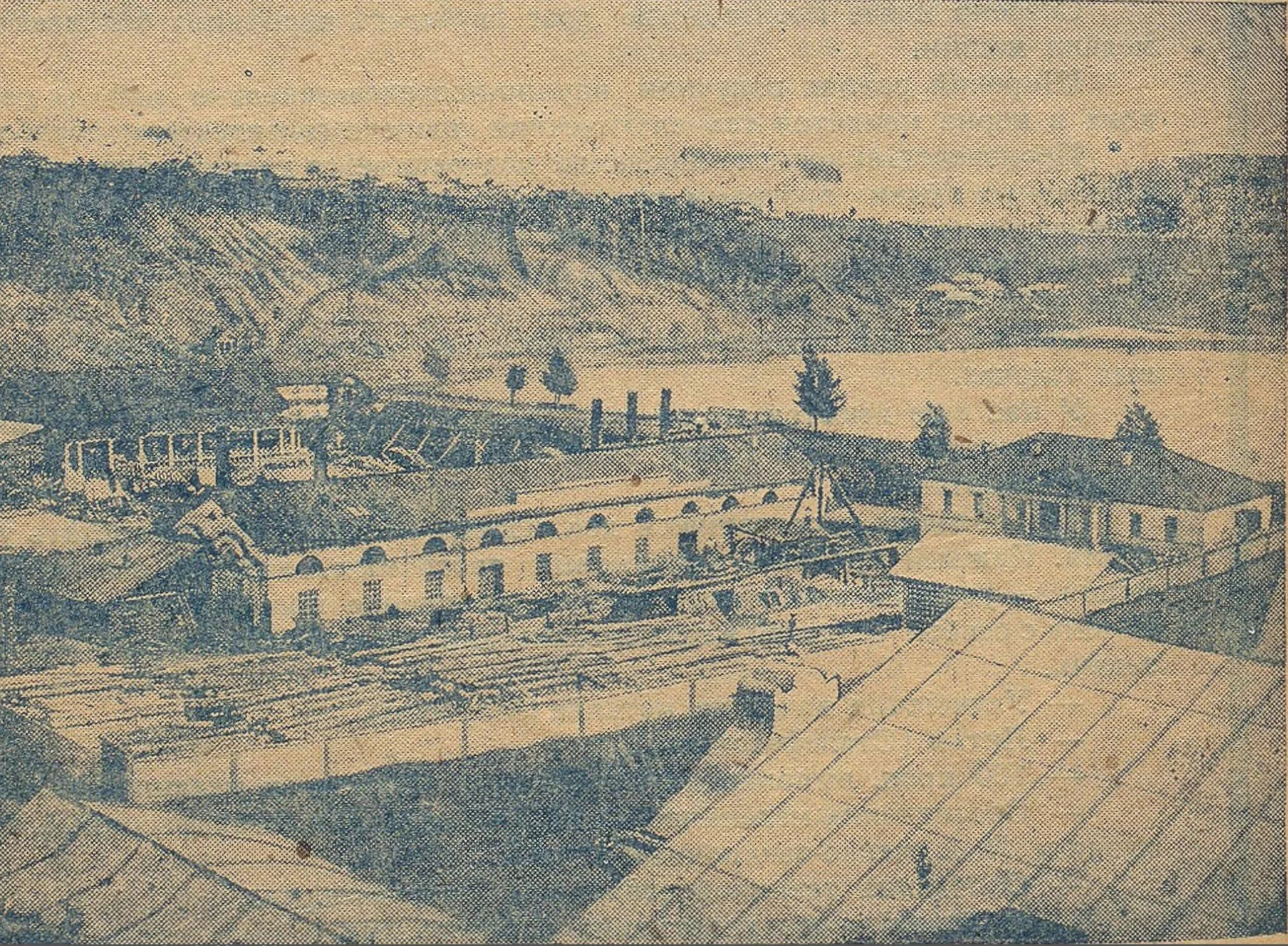


An aerial, sepia-toned illustration of a sprawling industrial city, likely in the Ural region, during the mid-19th century. The scene is dominated by numerous large, multi-story brick buildings with red roofs, many of which are factories. Several tall, dark chimneys are visible, each emitting thick plumes of black smoke that rise into a cloudy sky. The city is densely packed with these industrial structures, interspersed with smaller buildings and open spaces. In the foreground, there are more detailed views of the buildings and streets, showing the scale of the industrial complex. The overall atmosphere is one of intense industrial activity and urban expansion.

Развитие промышленности Урала в первой половине XIX века







**УРАЛЬСКАЯ
СТАЛЬ**



