

Channel
Children's
World

What time is it? What is on?



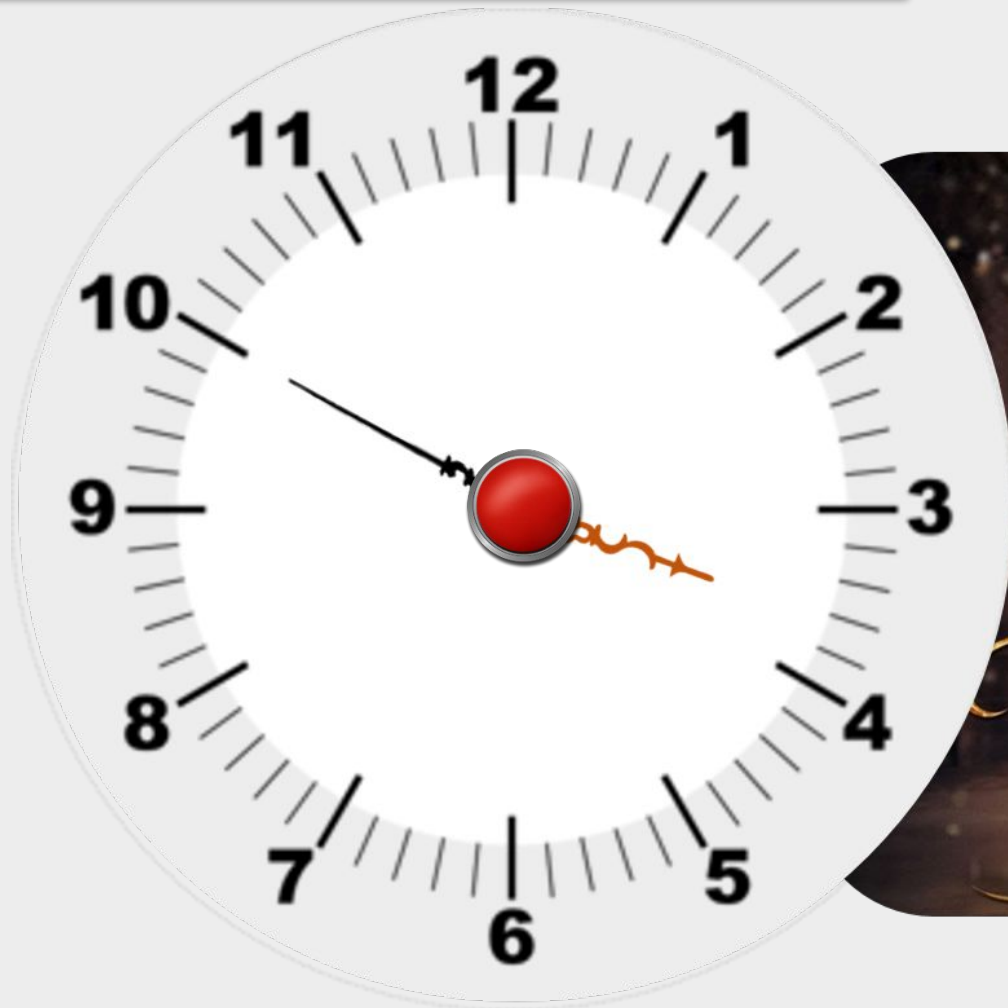
What time is it? What is on?

It's half past eight.



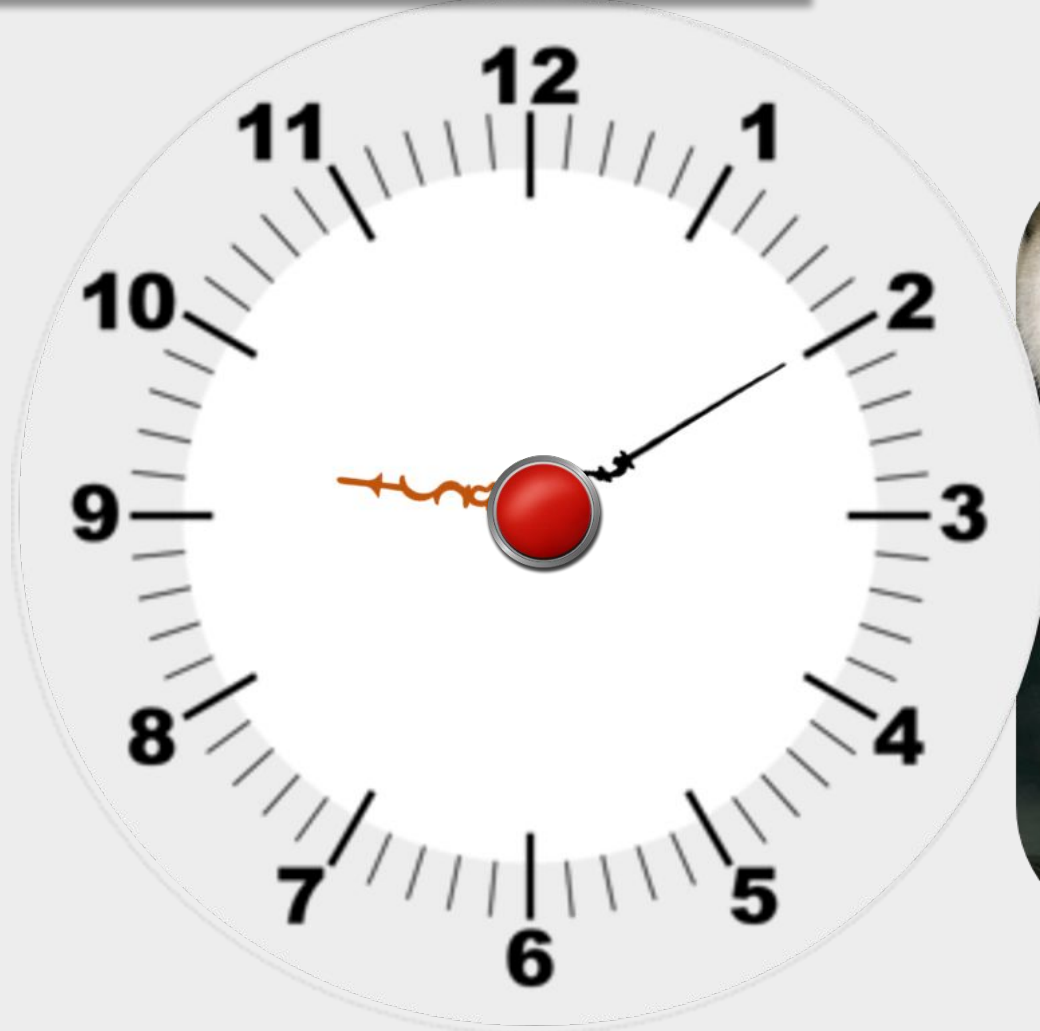
What time is it? What is on?

It's ten to four.



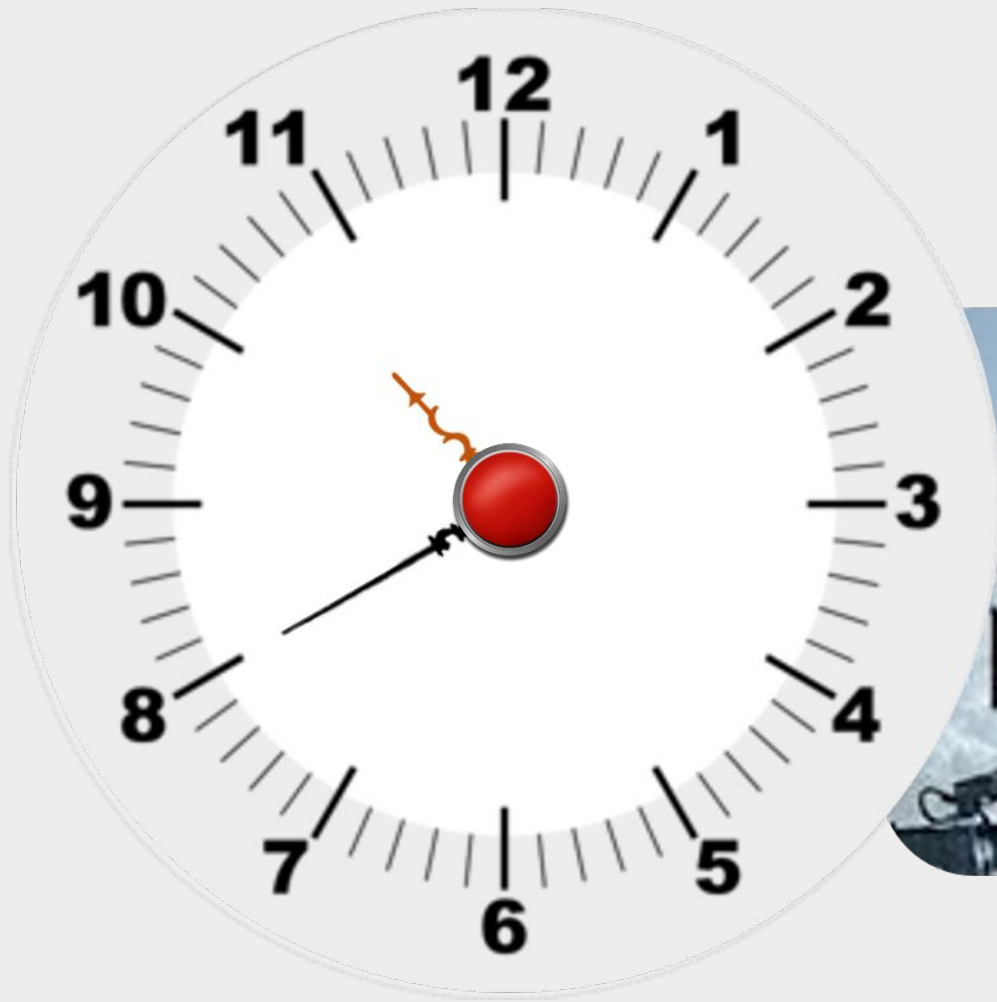
What time is it? What is on?

It's ten past nine.



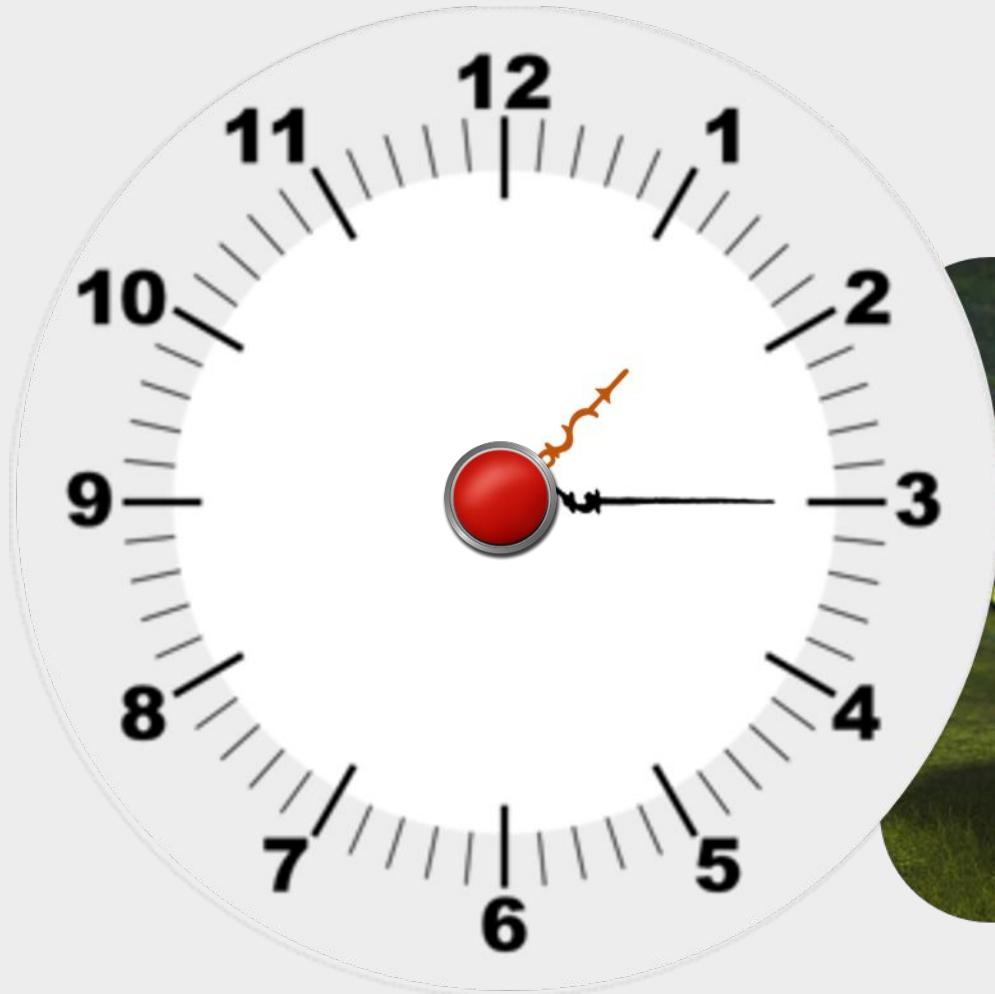
What time is it? What is on?

It's twenty to eleven.



What time is it? What is on?

It's quarter past one.



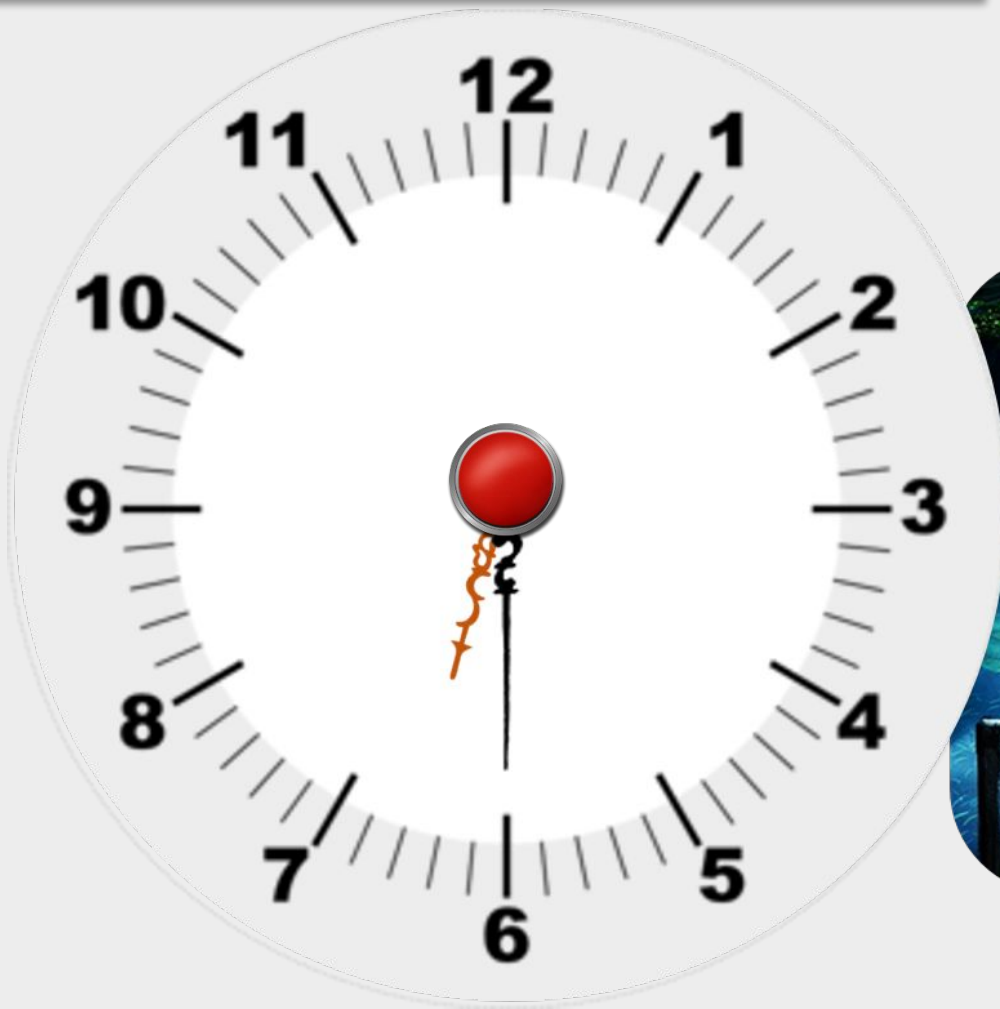
What time is it? What is on?

It's five to eight.



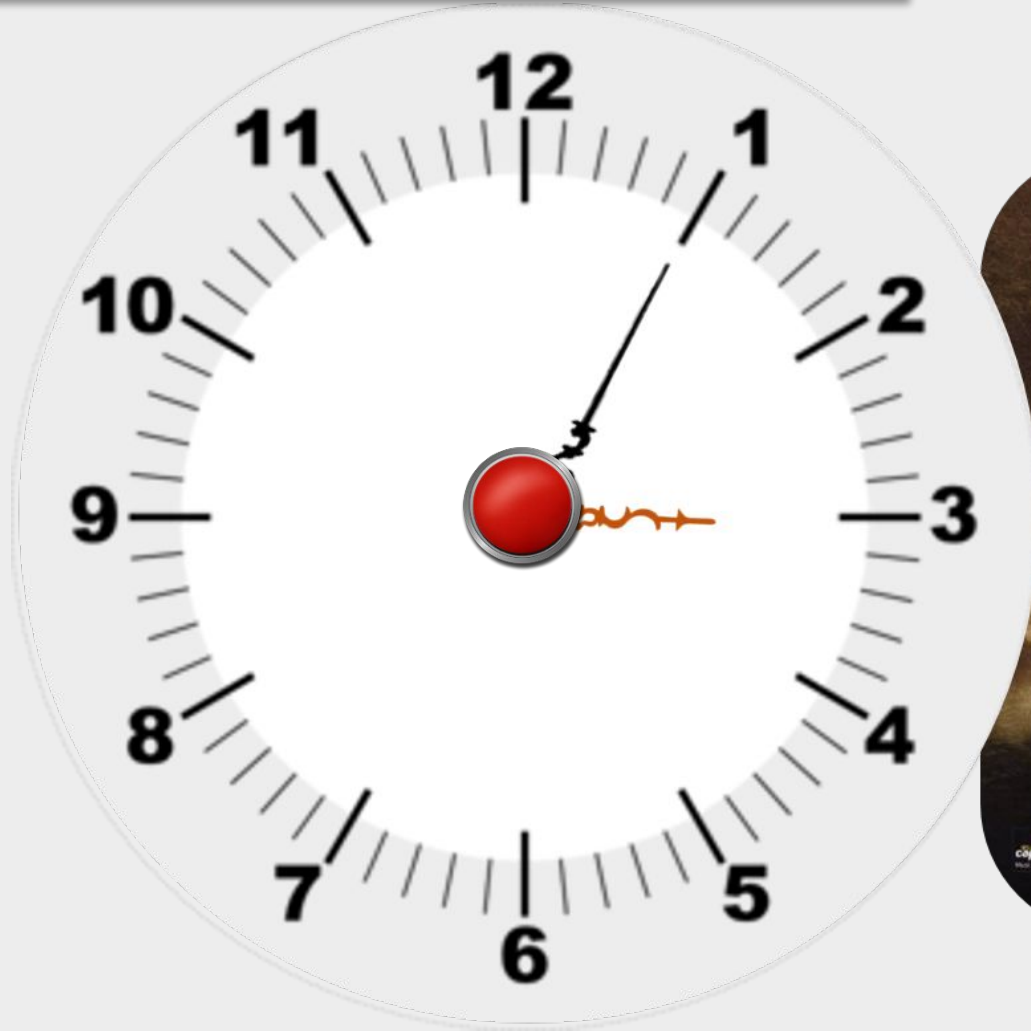
What time is it? What is on?

It's half past six.



What time is it? What is on?

It's five past three.



It's nineteen past eight. What is on?

