

Теорема синусов

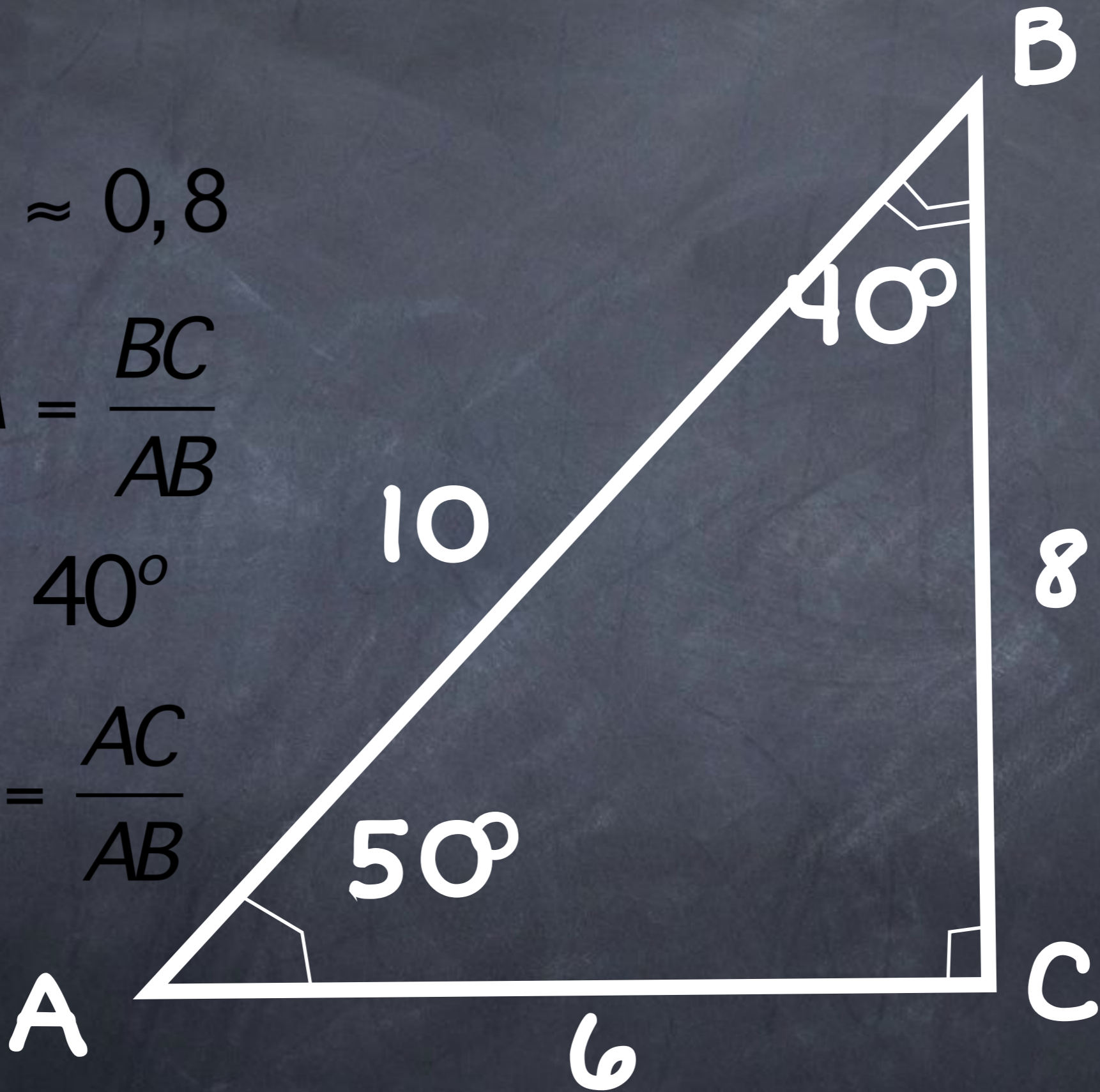
#1

$$\sin 50^\circ \approx 0,8$$

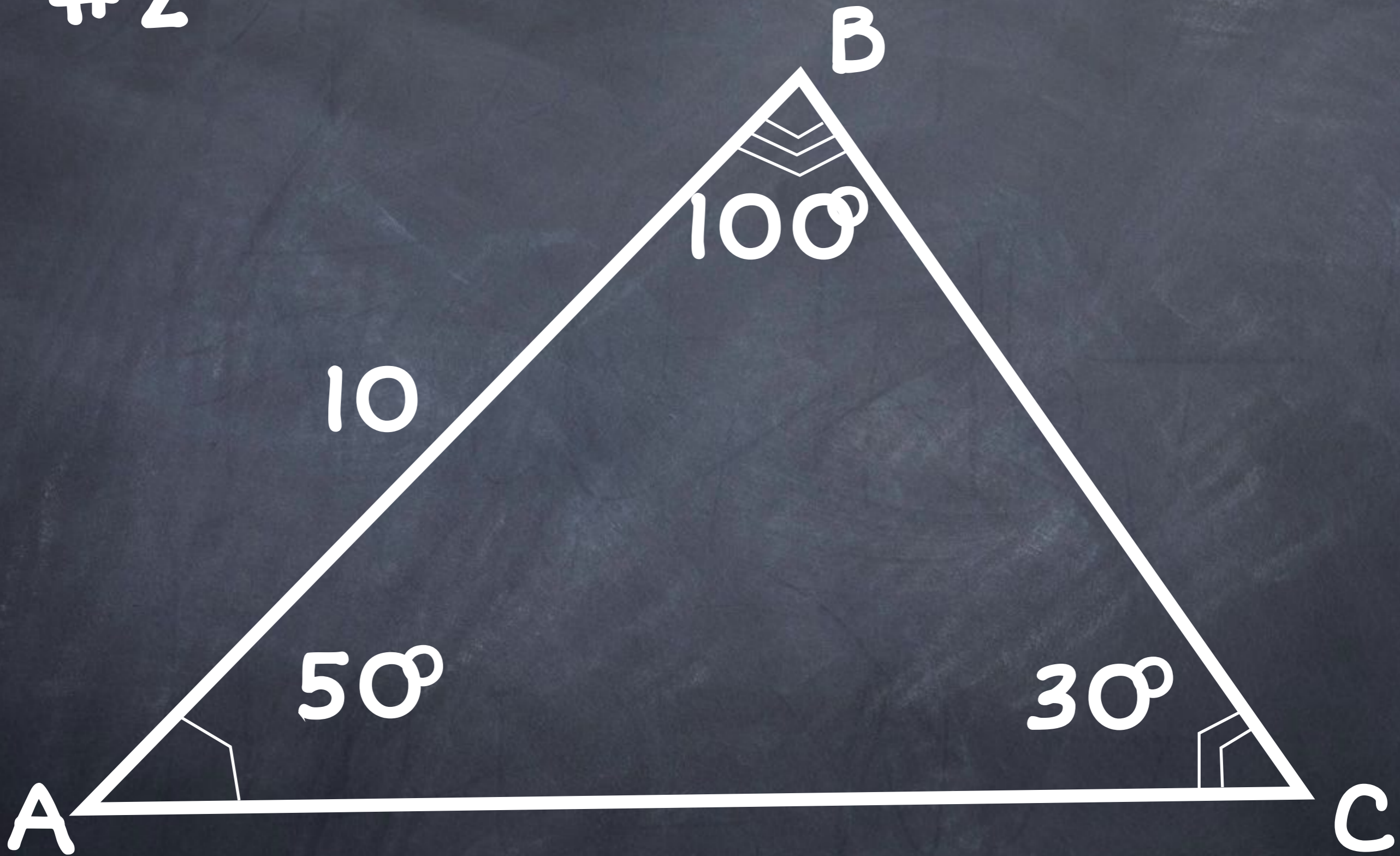
$$\sin \angle A = \frac{BC}{AB}$$

$$\angle B = 40^\circ$$

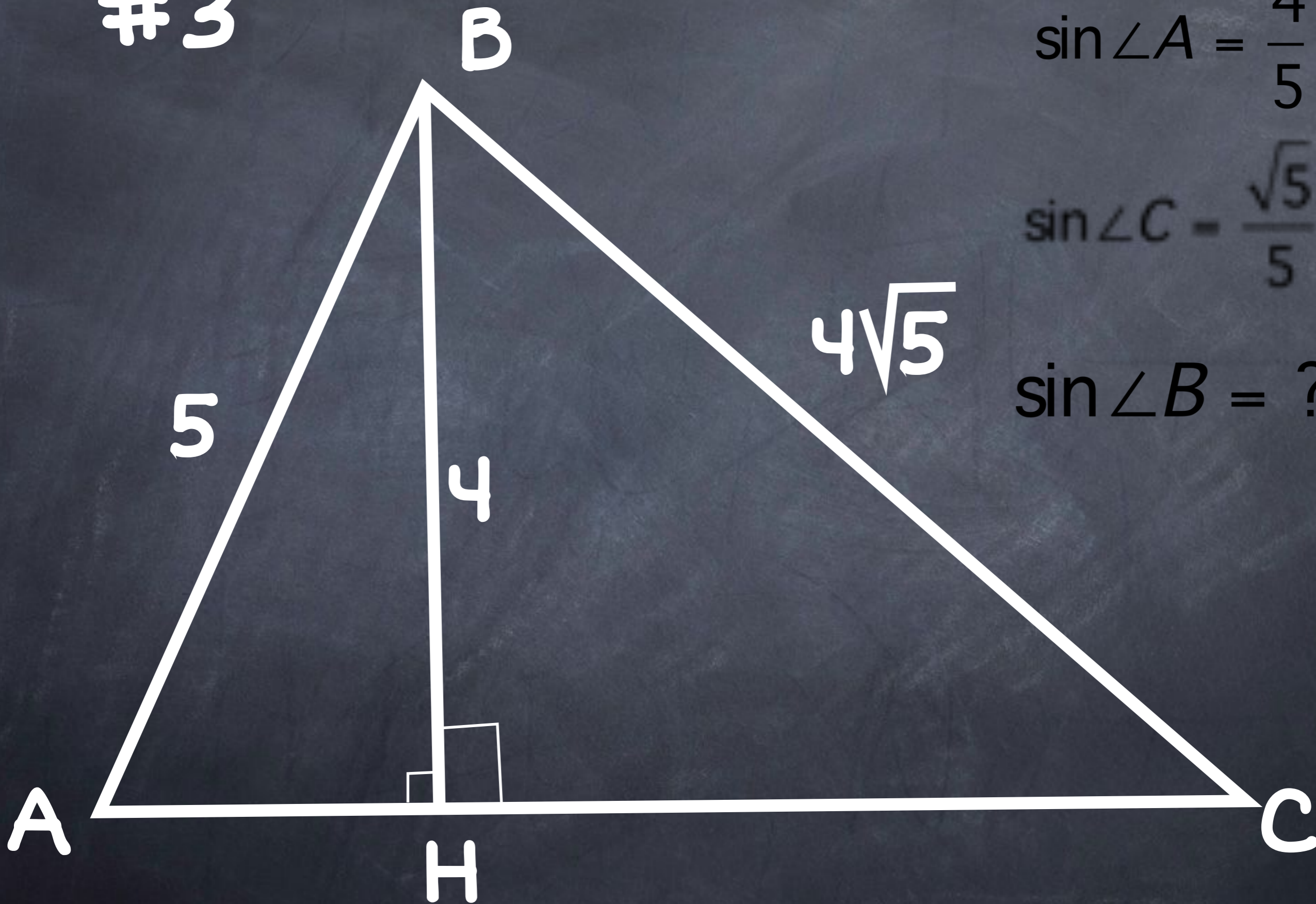
$$\sin \angle B = \frac{AC}{AB}$$



#2



#3



$$\sin \angle A = \frac{4}{5}$$

$$\sin \angle C = \frac{\sqrt{5}}{5}$$

$$\sin \angle B = ?$$

#2

