



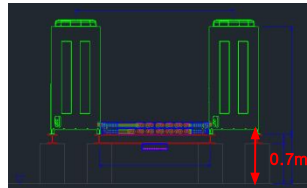
CFD Analysis Report for Lotte PJT in Russia

SAC Engineering Division

LG
Electronics



Top view

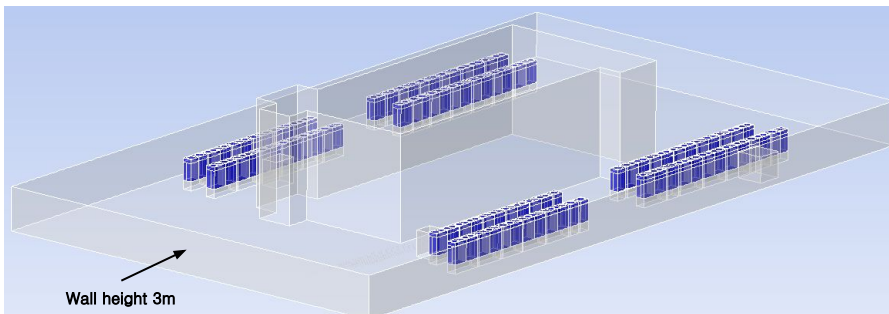


Side view

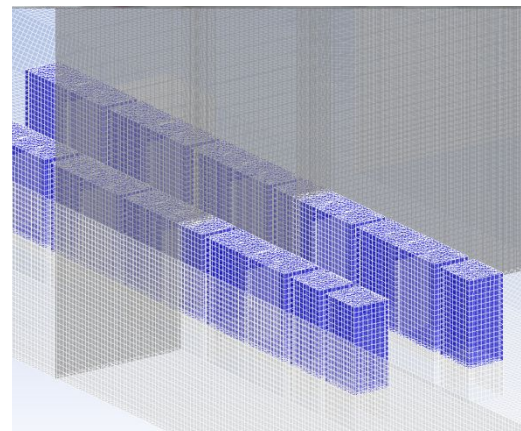


wall height 3m



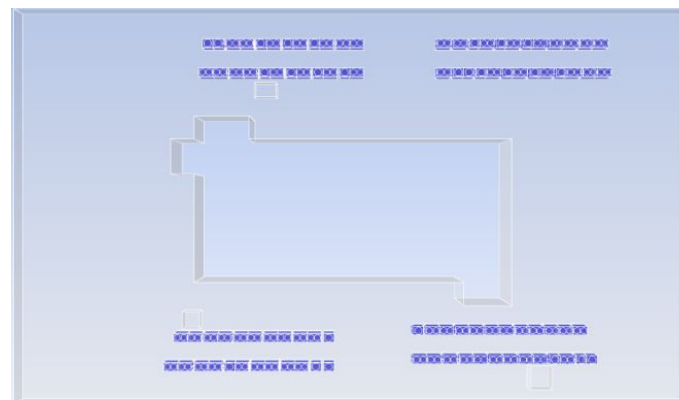


Iso view



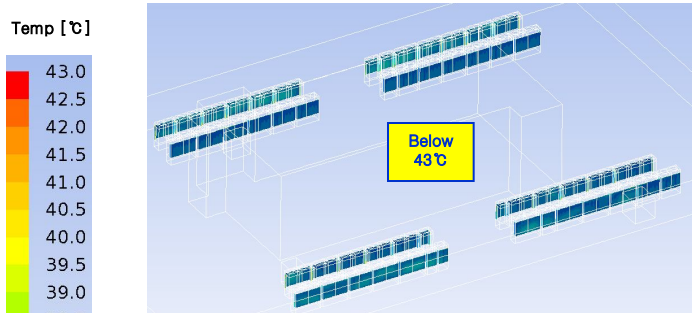
Mesh

- CFD Analysis Condition
- ✓ Product : Multi III
 - ✓ Operation ratio : 100%
 - ✓ Air temp. : 33 °C
 - ✓ Roof wall height : 3m
 - ✓ Support height : 0.7m
 - ✓ CFD Analysis Program : FLUENT 13.0.0, GAMBIT 2.4.6
 - ✓ Viscous model : k-e standard model
 - ✓ Mesh : 6,791,555 hexahedral mesh

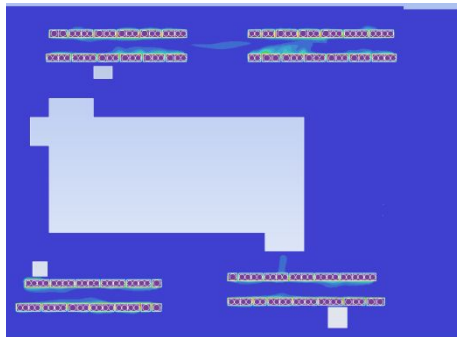


Top view

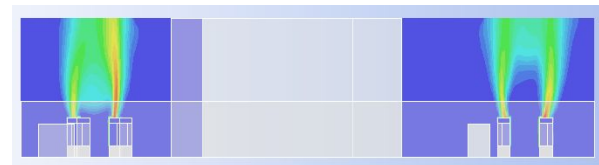
It is shown that avg. Temp. of heat exchanger is distributed from 34°C to 49°C It seems that normal operation of AC product could be possible in these conditions.



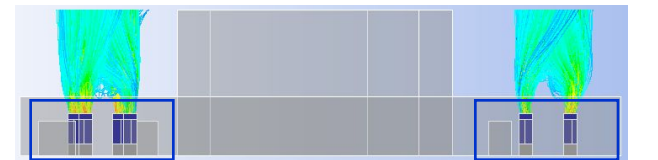
Temp. contour on heat exchanger



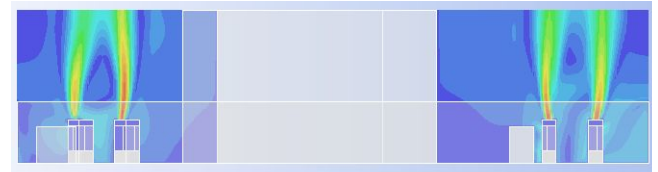
Temp. contour on surface (h=1.5m)



Temp. contour on surface



Velocity contour on surface



Velocity contour on surface

Vel [m/s]

