

Daemon Tools Lite 4.45.4 Date modified: 6/27/2012 1:47 AM
Application Size: 13.5 MB

Date created: 6/28/2012 11:25 PM

Name	Date modified	Type	Size
Crack	6/24/2012 8:12 AM	WinRAR archive	529 KB
Daemon Tools Lite 4.45.4	6/27/2012 1:47 AM	Application	13,897 KB
PTC_Creo_2.0_M010			4,413,666 KB
PTC_Creo_2.0_M010			225,280 KB

DAEMON Tools Lite

 Another DAEMON Tools Lite installation is in progress.

DAEMON Tools Lite

Welcome to the DAEMON Tools Lite 4.45.4.0315 Setup Wizard

This wizard will guide you through the steps required to install DAEMON Tools Lite on your computer.
Click Next to continue.

Language: English

Next > Cancel

Daemon Tools Lite 4.45.4 Date modified: 6/27/2012 1:47 AM
Application Size: 13.5 MB

Date created: 6/28/2012 11:25 PM

DAEMON Tools Lite

License Agreement

Please review the license terms before installing DAEMON Tools Lite.

Press Page Down to see the rest of the agreement.

DAEMON Tools Lite End User License Agreement

IMPORTANT - READ CAREFULLY: This DAEMON Tools Lite End User License Agreement ("EULA") is agreement between you (either an individual or a single entity) and DT Soft Ltd for the DAEMON Tools Lite software product identified above, which includes computer software and may include associated media, printed materials, and "..." ("SOFTWARE PRODUCT").

If you accept the terms of the agreement, click I Agree to continue. You must accept the agreement to install DAEMON Tools Lite.

DAEMON Tools Lite Setup

< Back **I Agree** Cancel

DAEMON Tools Lite

License Type
Please choose the License type you prefer.

Paid License
You are going to activate a Paid License. Support is provided only for Paid License users.

Free License
Activate a license for personal and non-commercial use. Full technical support is not guaranteed.

DAEMON Tools Lite Setup

< Back Next > Cancel

DAEMON Tools Lite

License Type

Please choose the License type you prefer.

Paid License
You are going to activate a Paid License. Support is provided only for Paid License users.

Free License
Activate a license for personal and non-commercial use. Full technical support is not guaranteed.

DAEMON Tools Lite Setup

< Back **Next >** Cancel

DAEMON Tools Lite

Choose Components

Choose which features of DAEMON Tools Lite you want to install.

Check the components you want to install and uncheck the components you don't want to install. Click Next to continue.

- DAEMON Tools Lite Core Files
- SPTD 1.81 (Reboot Required)
- Windows Gadget
- File Associations
- 安装百度工具栏和地址栏, 让上网搜索更便捷
- 安装百度浏览器, 体验万千应用
- 将网址导航hao123设为首页
- 将最好最全的网址导航hao123添加到桌面

Description

Move your mouse over a component to see its description.

DAEMON Tools Lite Setup

< Back **Next >** Cancel

Daemon Tools Lite 4.45.4 Date modified: 6/27/2012 1:47 AM
Application Size: 13.5 MB

Date created: 6/28/2012 11:25 PM

DAEMON Tools Lite

Choose Components

Choose which features of DAEMON Tools Lite you want to install.

Check the components you want to install and uncheck the components you don't want to install. Click Next to continue.

- DAEMON Tools Lite Core Files
- SPTD 1.81 (Reboot Required)
- Windows Gadget
- File Associations
- 安装百度工具栏和地址栏, 让上网搜索更便捷
- 安装百度浏览器, 体验万千应用
- 将网址导航hao123设为首页
- 将最好最全的网址导航hao123添加到桌面
- Desktop Shortcut

Description

Move your mouse over a component to see its description.

DAEMON Tools Lite Setup

< Back **Next >** Cancel


Daemon Tools Lite 4.45.4 Date modified: 6/27/2012 1:47 AM
Application Size: 13.5 MB

Date created: 6/28/2012 11:25 PM

DAEMON Tools Lite

MountSpace

Enhanced DAEMON Tools features



MOUNT SPACE

DAEMON Tools mount statistics

Find your favorite discs on MountSpace to discover the image files you are mounting, games you are playing, music you are listening to and more.

Privacy Settings

Detailed information about the privacy protections is in DAEMON Tools Lite EULA.

- Allow MountSpace to use my mount statistics**
Your mount statistics will be sent to [MountSpace](#) anonymously and combine with hundreds of other anonymous users. Any identifiable information about you won't be collected and shared.
- Don't allow MountSpace to use my statistics**


DAEMON Tools Lite Setup

< Back Next > Cancel

DAEMON Tools Lite

MountSpace

Enhanced DAEMON Tools features



MOUNT SPACE

DAEMON Tools mount statistics

Find your favorite discs on MountSpace to discover the image files you are mounting, games you are playing, music you are listening to and more.

Privacy Settings

Detailed information about the privacy protections is in DAEMON Tools Lite EULA.

Allow MountSpace to use my mount statistics
Your mount statistics will be sent to [MountSpace](#) anonymously and combine with hundreds of other anonymous users. Any identifiable information about you won't be collected and shared.

Don't allow MountSpace to use my statistics

DAEMON Tools Lite Setup

< Back **Next >** Cancel

Daemon Tools Lite 4.45.4 Date modified: 6/27/2012 1:47 AM
Application Size: 13.5 MB

Date created: 6/28/2012 11:25 PM

DAEMON Tools Lite

Choose Install Location

Choose the DAEMON Tools Lite installation folder.

Setup will install DAEMON Tools Lite in the following folder. To install in a different folder, click Browse button and select another folder. Click Install button to start the installation.

Destination Folder

Space required: 29.0MB
Space available: 21.0GB

DAEMON Tools Lite Setup

Computer > win7-En (C)

Open New folder

Name
Crack
Daemon
PTC_Creo
PTC_Creo

Desktop

Downloads

Recent Places

Libraries

Documents

Music

Pictures

Videos

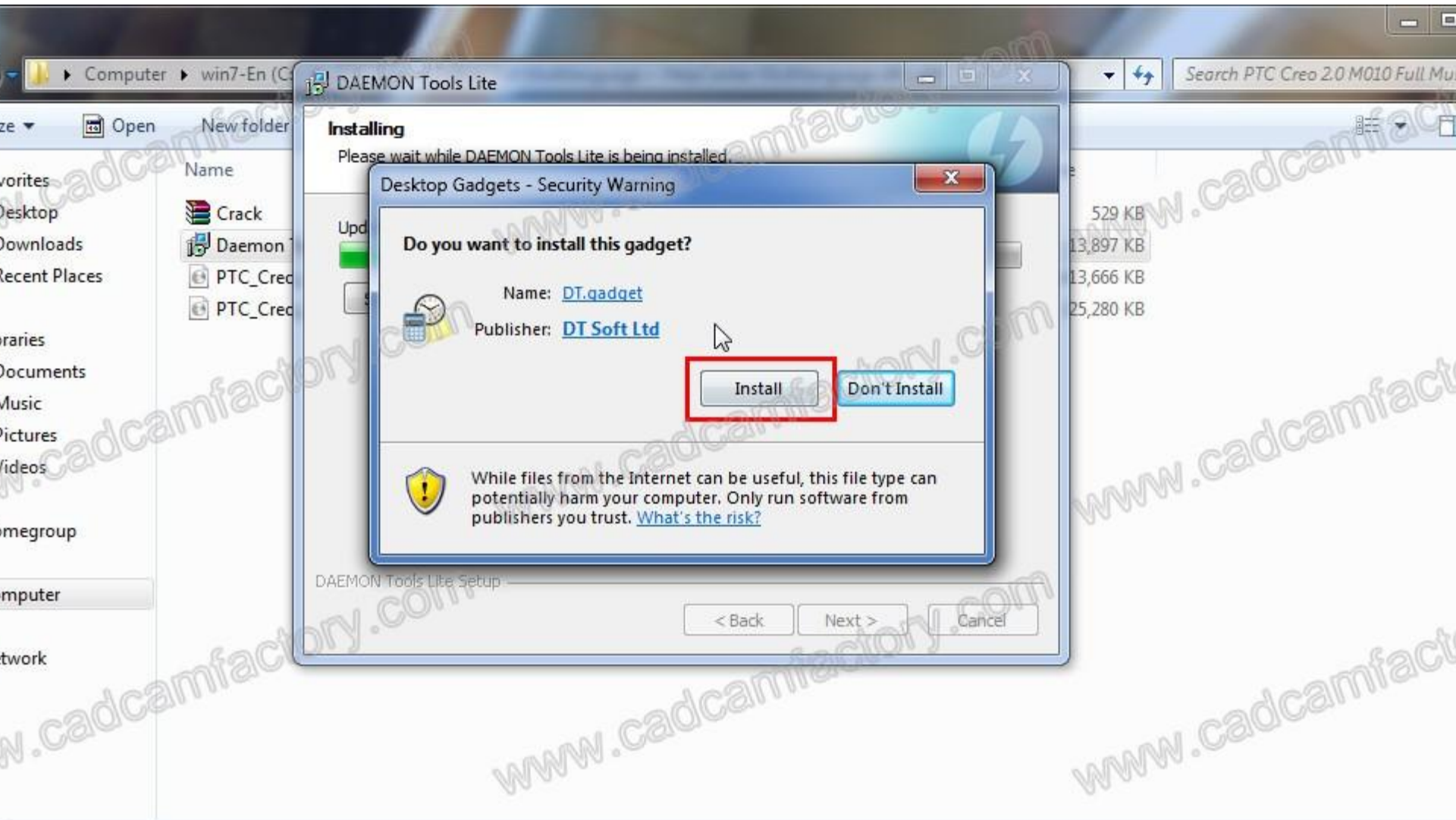
Homegroup

Computer

Network

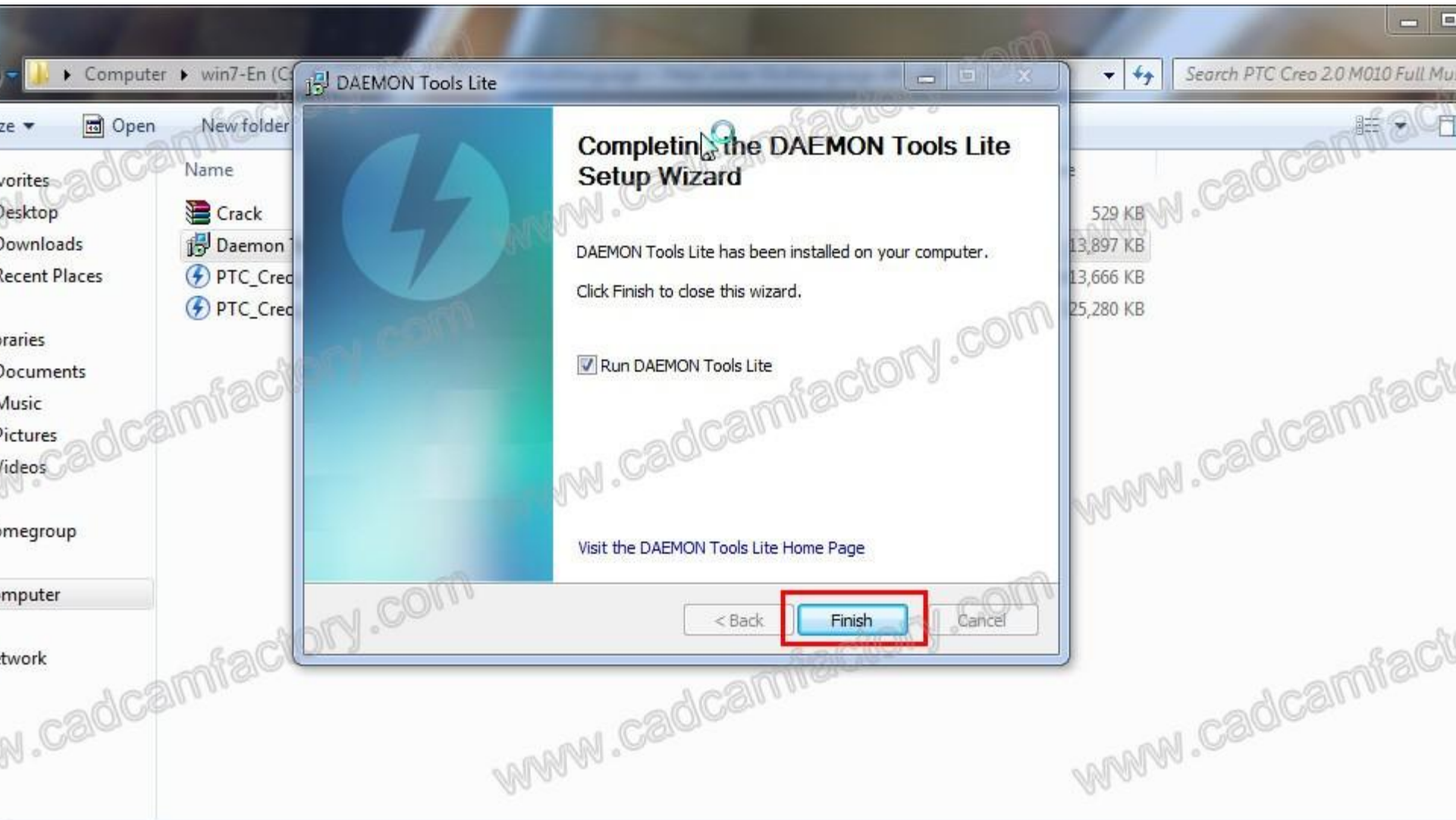
Search PTC Creo 2.0 M010 Full Mu

529 KB
13,897 KB
13,666 KB
25,280 KB



Daemon Tools Lite 4.45.4 Date modified: 6/27/2012 1:47 AM
Application Size: 13.5 MB

Date created: 6/28/2012 11:25 PM



DAEMON Tools Lite

Completing the DAEMON Tools Lite Setup Wizard

DAEMON Tools Lite has been installed on your computer.

Click Finish to close this wizard.

Run DAEMON Tools Lite

[Visit the DAEMON Tools Lite Home Page](#)

< Back

Finish

Cancel

Daemon Tools Lite 4.45.4 Date modified: 6/27/2012 1:47 AM

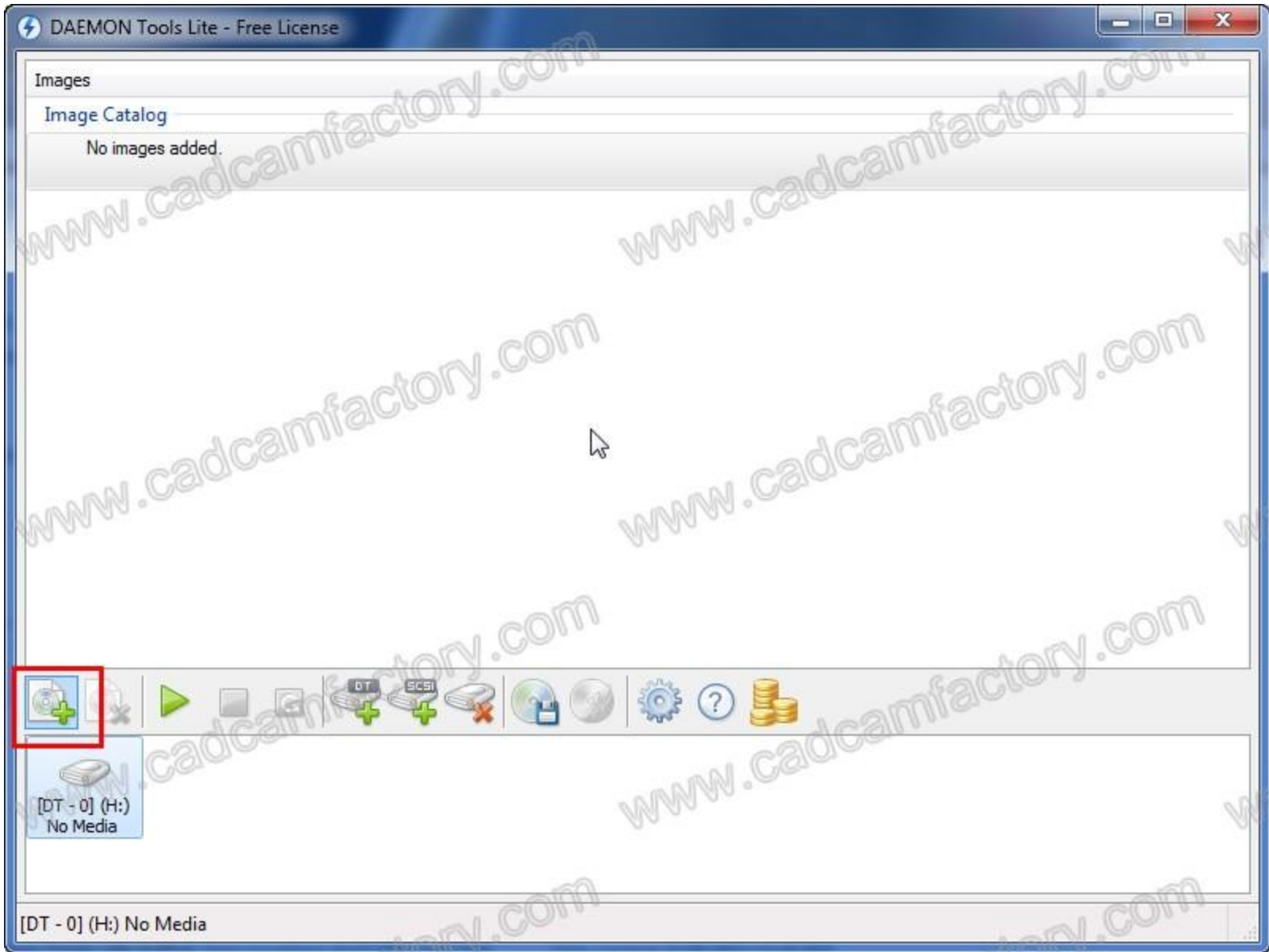
Date created: 6/28/2012 11:25 PM

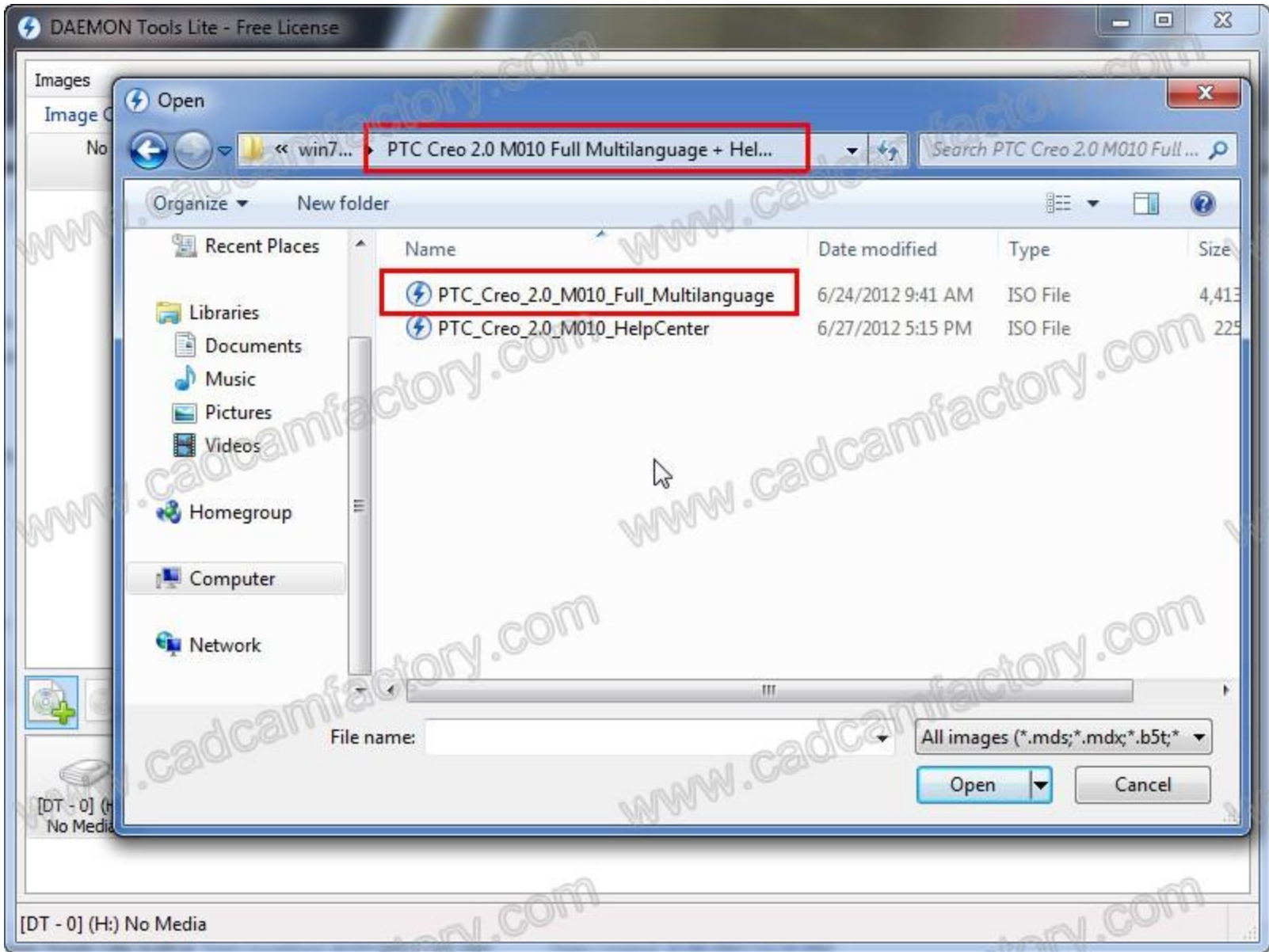
Application

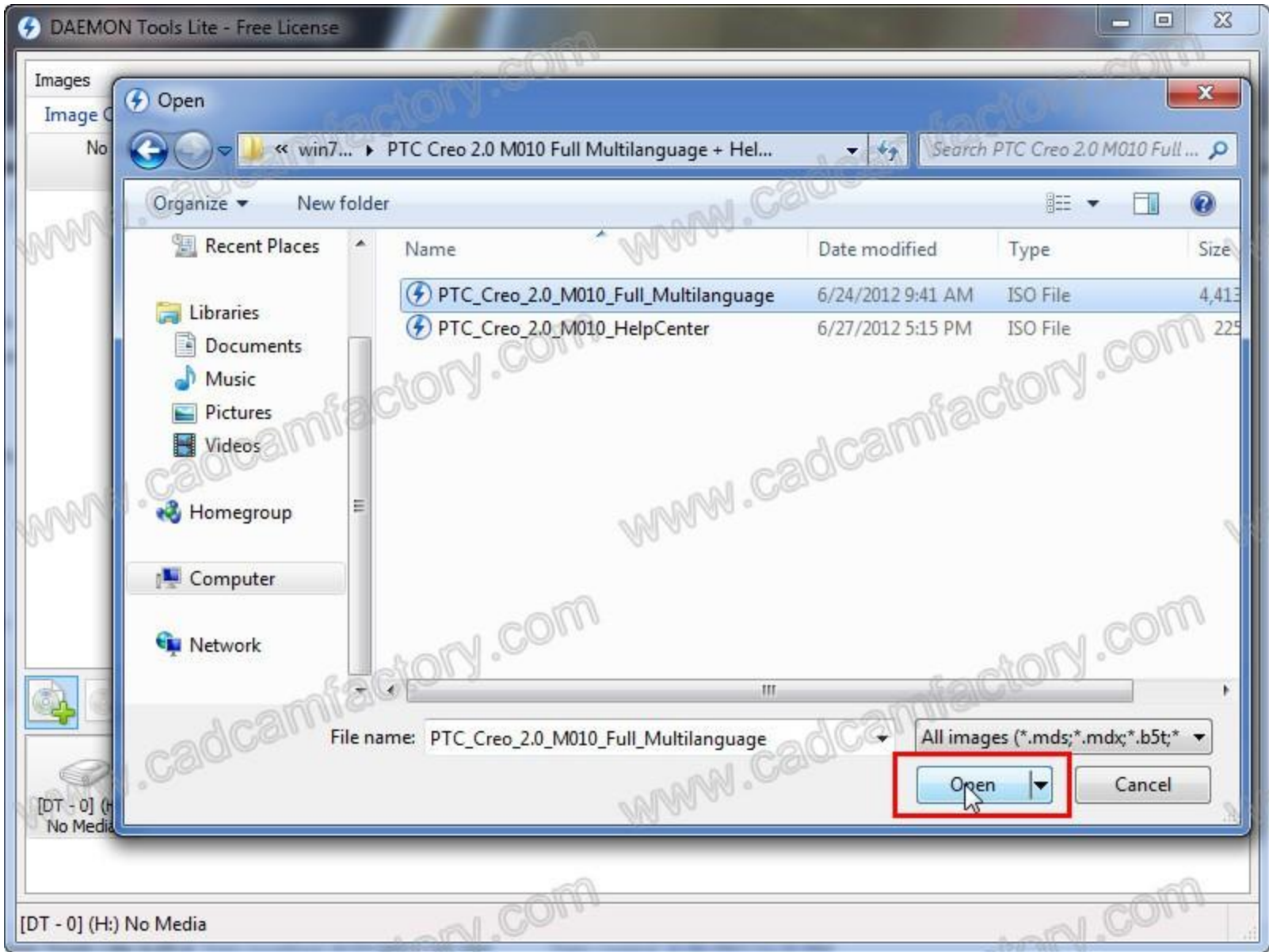
Size: 13.5 MB

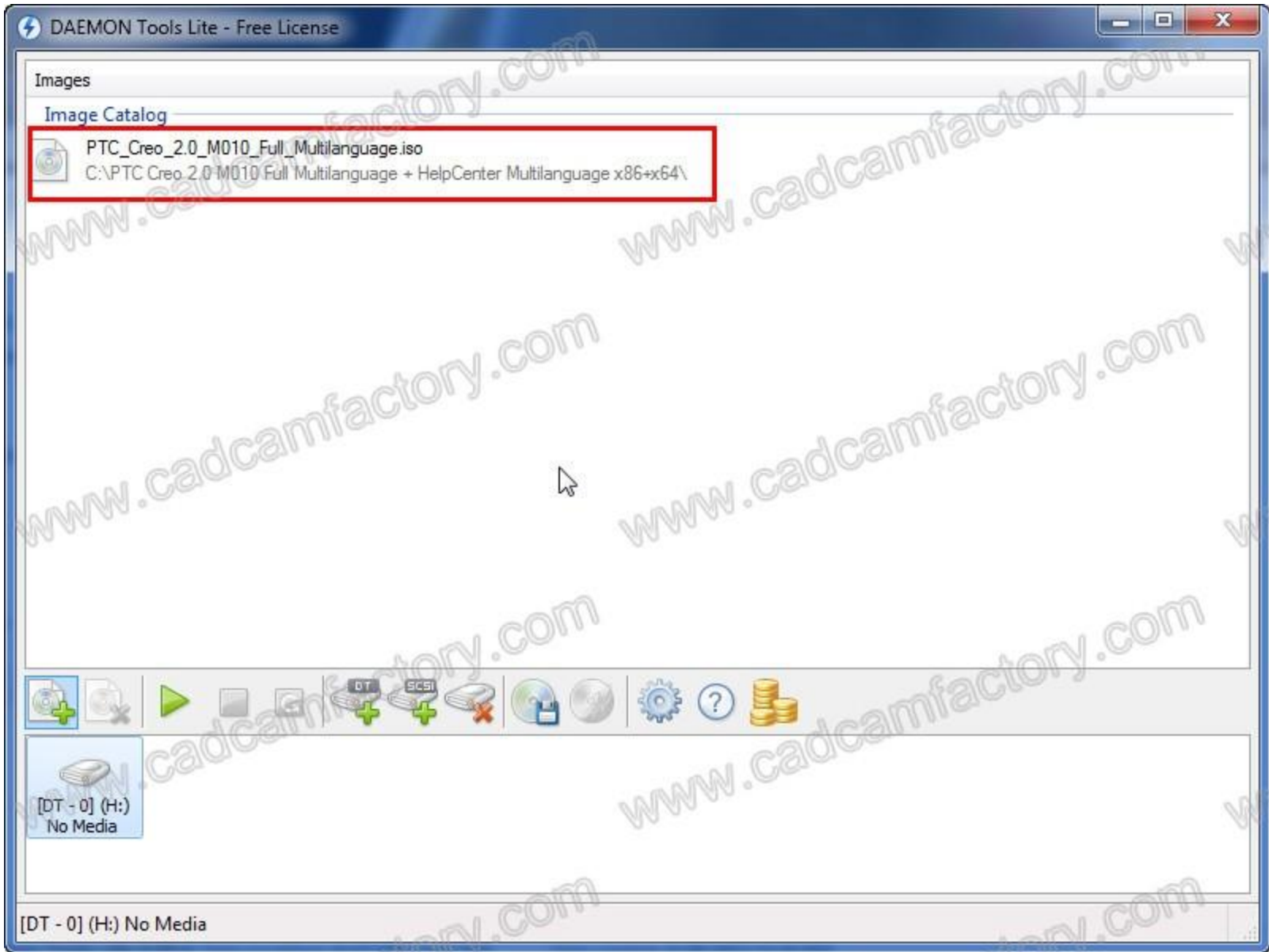
Name	Date modified	Type	Size
Crack	6/24/2012 8:12 AM	WinRAR archive	529 KB
Daemon Tools Lite 4.45.4	6/27/2012 1:47 AM	Application	13,897 KB
PTC_Creo_2.0_M010_Full_Multilanguage	6/24/2012 9:41 AM	ISO File	4,413,666 KB
PTC_Creo_2.0_M010_HelpCenter	6/27/2012 5:15 PM	ISO File	225,280 KB

 Updating virtual devices









DAEMON Tools Lite - Free License

Images

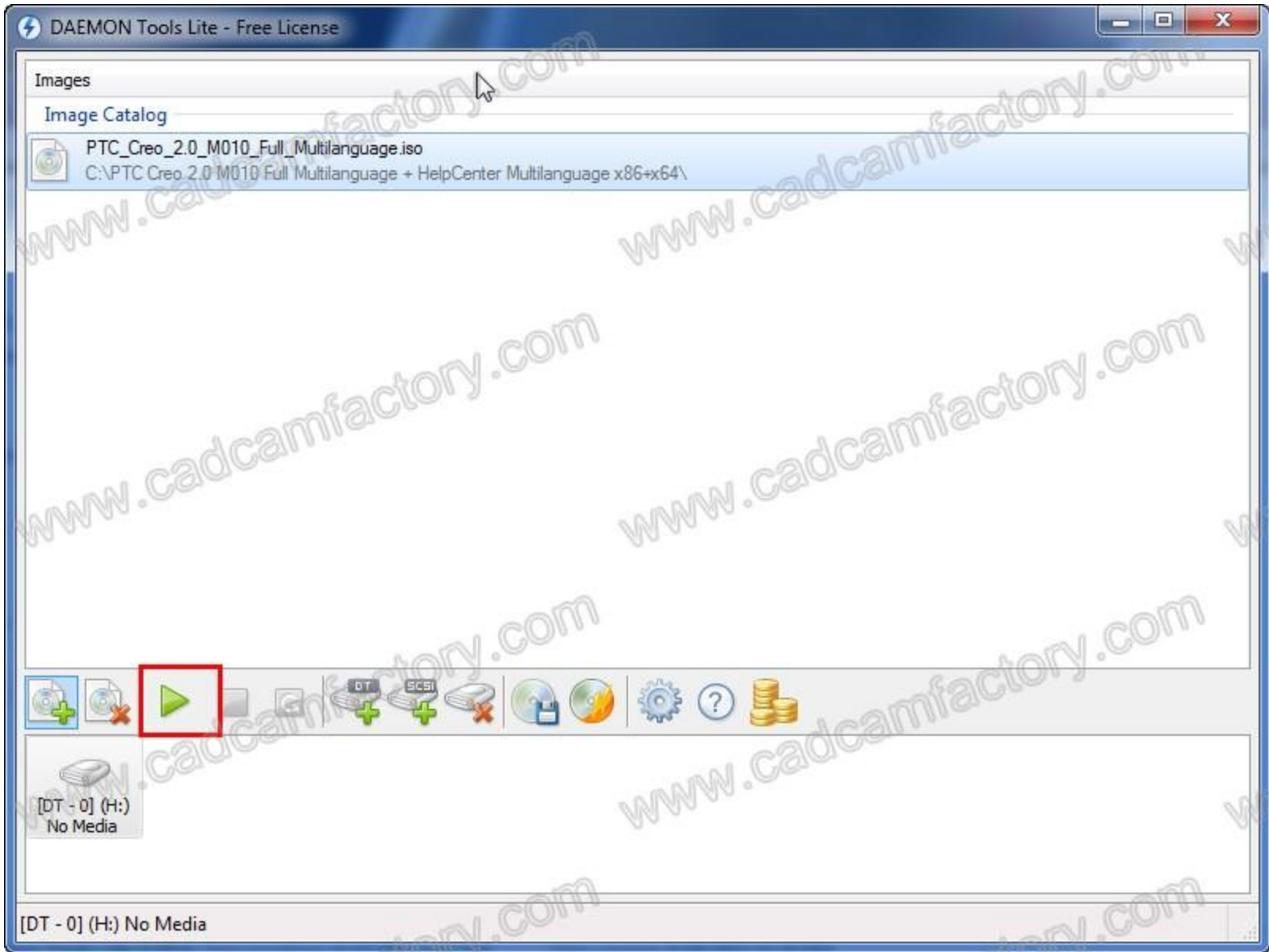
Image Catalog

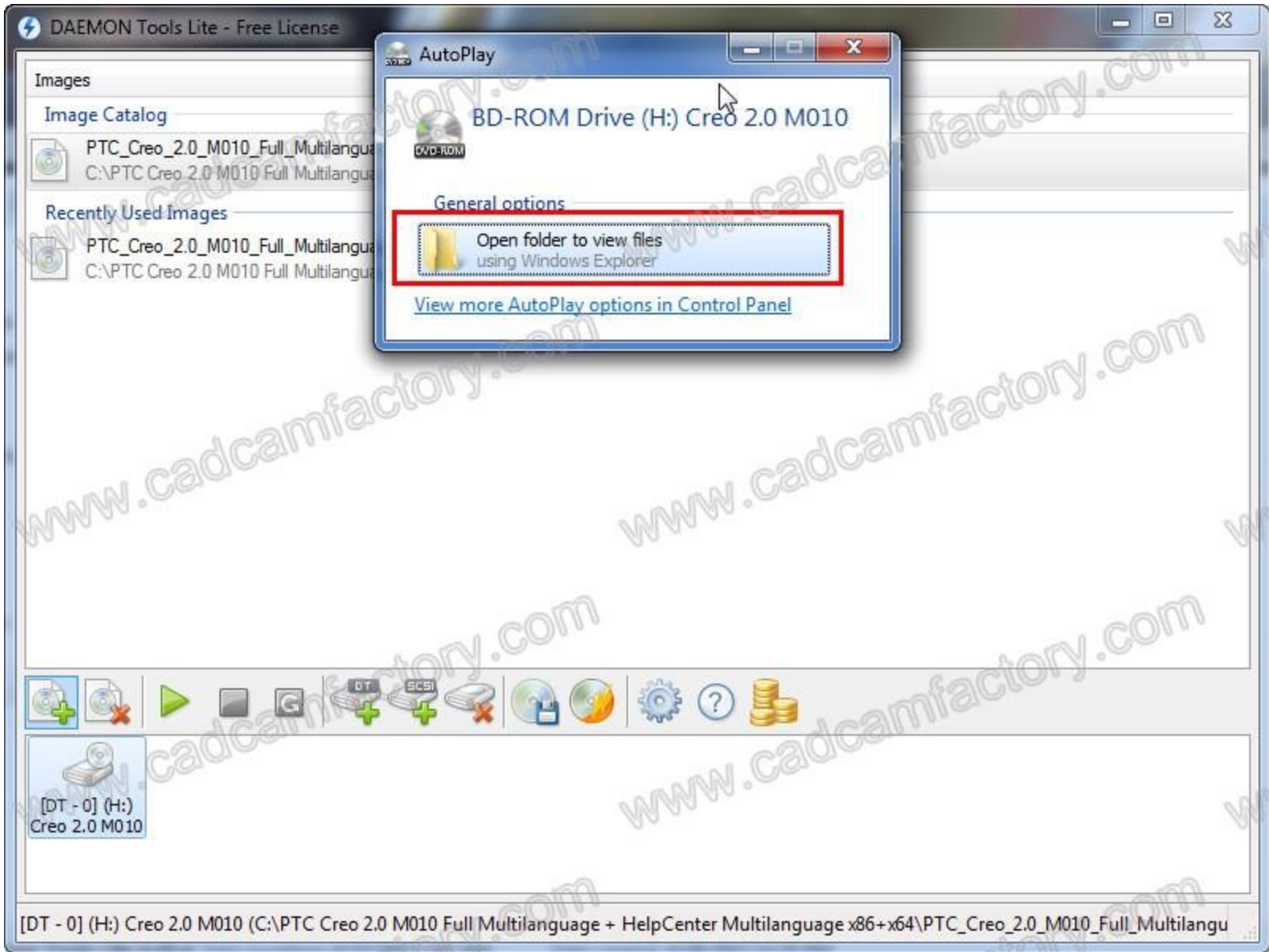
PTC_Creo_2.0_M010_Full_Multilanguage.iso
C:\PTC Creo 2.0 M010 Full Multilanguage + HelpCenter Multilanguage x86-x64\



[DT - 0] (H:)
No Media

[DT - 0] (H:) No Media





DAEMON Tools Lite - Free License

AutoPlay

BD-ROM Drive (H:) Creo 2.0 M010

General options

Open folder to view files using Windows Explorer

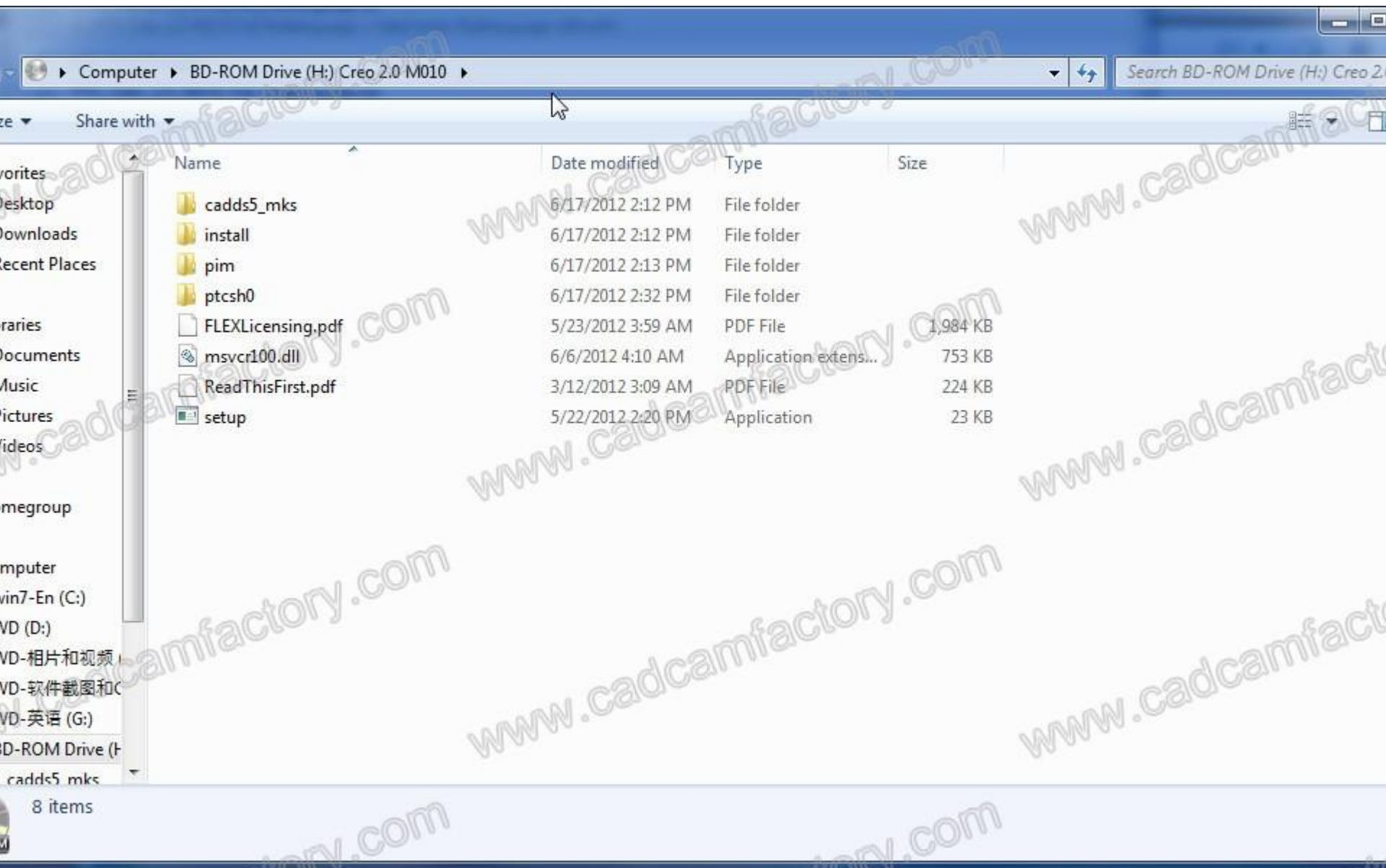
[View more AutoPlay options in Control Panel](#)

- Images
- Image Catalog
- PTC_Creo_2.0_M010_Full_Multilangua
C:\PTC Creo 2.0 M010 Full Multilangua
- Recently Used Images
- PTC_Creo_2.0_M010_Full_Multilangua
C:\PTC Creo 2.0 M010 Full Multilangua



[DT - 0] (H:)
Creo 2.0 M010

[DT - 0] (H:) Creo 2.0 M010 (C:\PTC Creo 2.0 M010 Full Multilangua + HelpCenter Multilangua x86+x64\PTC_Creo_2.0_M010_Full_Multilangua



Computer > BD-ROM Drive (H:) Creo 2.0 M010

Search BD-ROM Drive (H:) Creo 2.0

Name	Date modified	Type	Size
cadds5_mks	6/17/2012 2:12 PM	File folder	
install	6/17/2012 2:12 PM	File folder	
pim	6/17/2012 2:13 PM	File folder	
ptcsh0	6/17/2012 2:32 PM	File folder	
FLEXlicensing.pdf	5/23/2012 3:59 AM	PDF File	1,984 KB
msvcr100.dll	6/6/2012 4:10 AM	Application extens...	753 KB
ReadThisFirst.pdf	3/12/2012 3:09 AM	PDF File	224 KB
setup	5/22/2012 2:20 PM	Application	23 KB

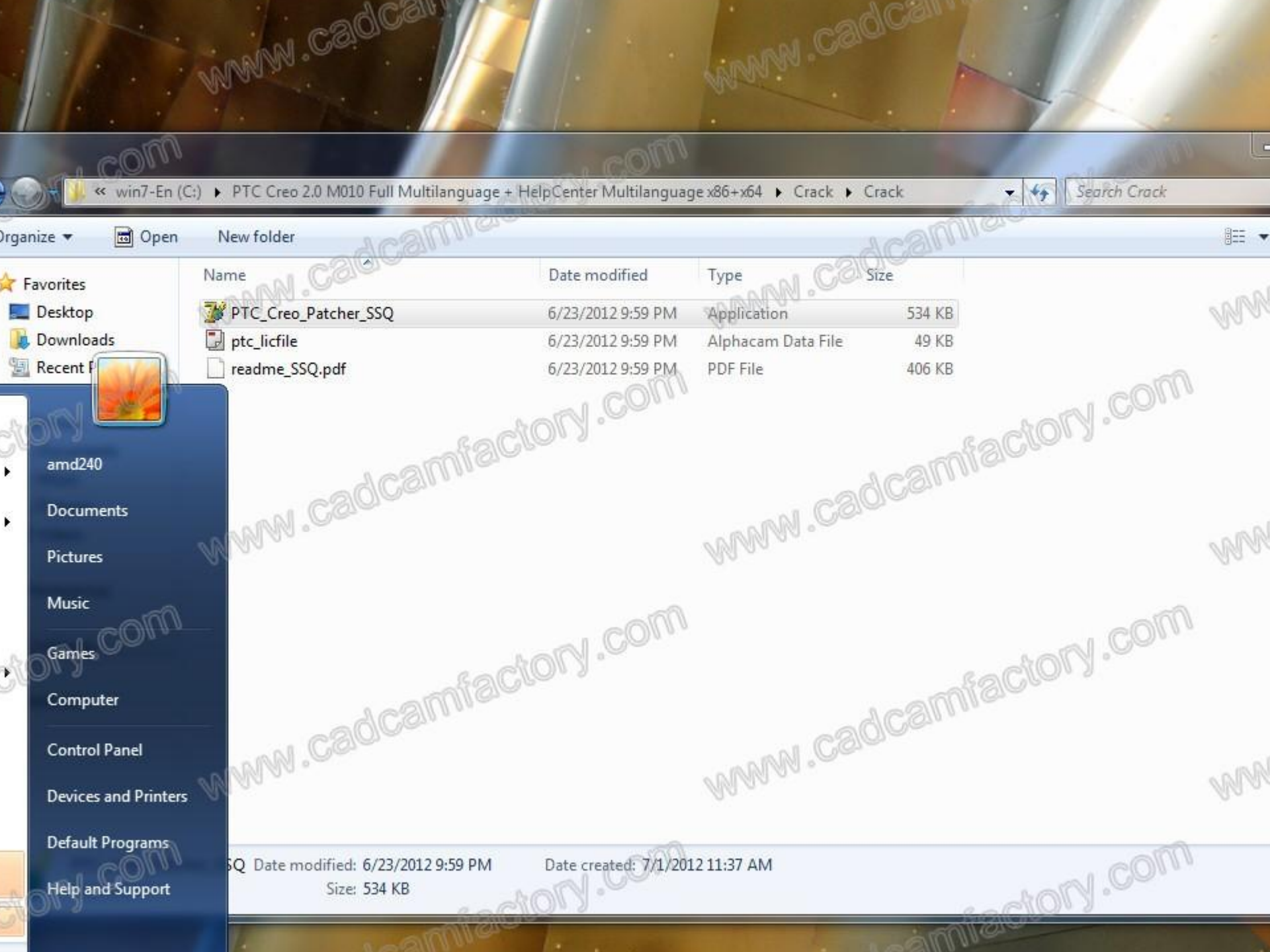
8 items

Right click

Name	Date modified	Type	Size
Crack	6/24/2012 8:12 AM	WinRAR archive	529 KB
Da	6/27/2012 1:47 AM	Application	13,897 KB
PT	6/24/2012 9:41 AM	ISO File	4,413,666 KB
PT	6/27/2012 5:15 PM	ISO File	225,280 KB

- Open
- Extract files...
- Extract Here
- Extract to Crack**
- Open with...
- Restore previous versions
- Send to
- Cut
- Copy
- Create shortcut
- Delete
- Rename
- Properties

Name	Date modified	Type	Size
Crack	7/1/2012 11:37 AM	File folder	
Crack	6/24/2012 8:12 AM	WinRAR archive	529 KB
Daemon Tools Lite 4.45.4	6/27/2012 1:47 AM	Application	13,897 KB
PTC_Creo_2.0_M010_Full_Multilanguage	6/24/2012 9:41 AM	ISO File	4,413,666 KB
PTC_Creo_2.0_M010_HelpCenter	6/27/2012 5:15 PM	ISO File	225,280 KB



Address bar: << win7-En (C:) >> PTC Creo 2.0 M010 Full Multilanguage + HelpCenter Multilanguage x86+x64 >> Crack >> Crack

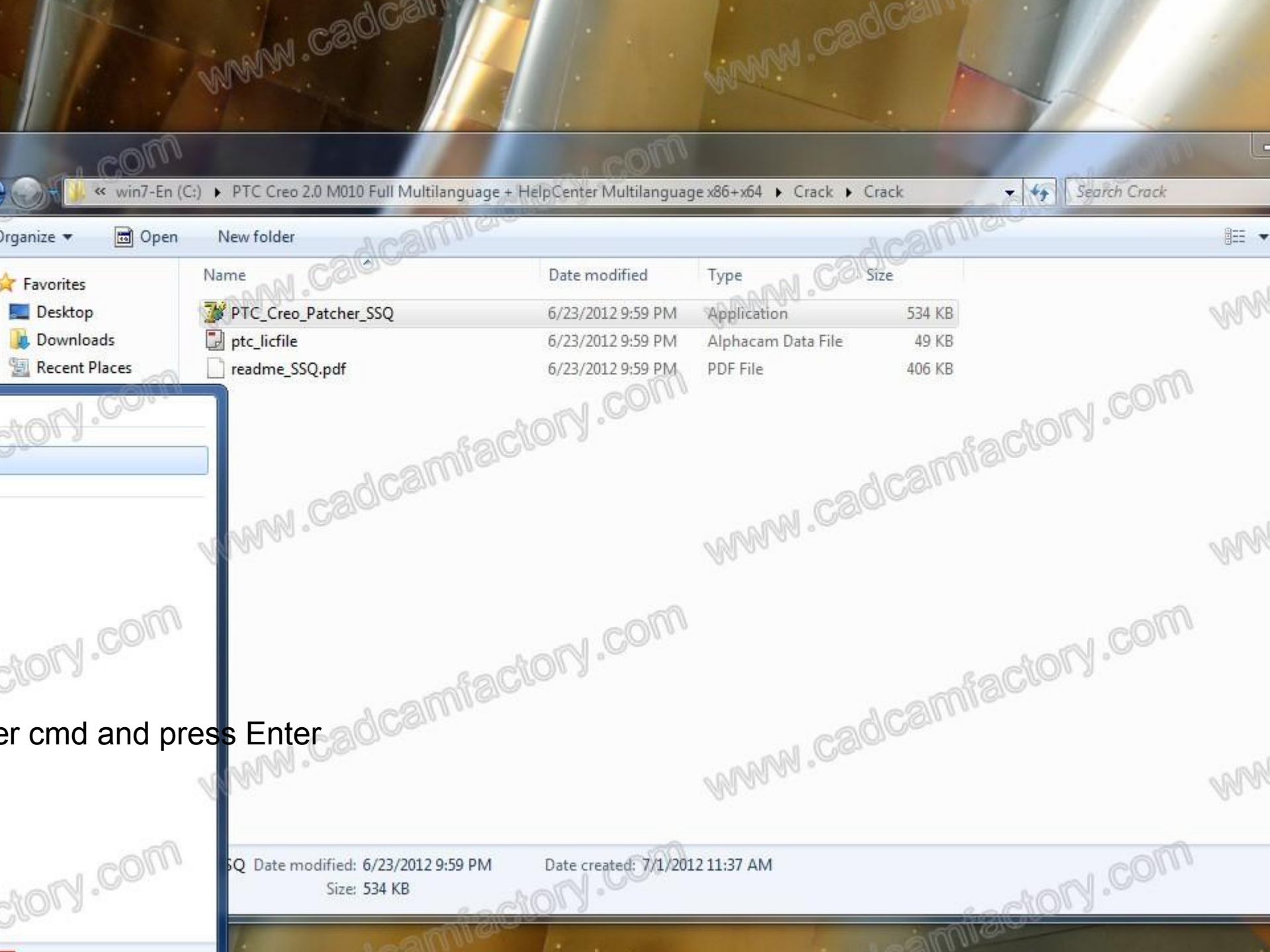
Organize > Open > New folder

- ★ Favorites
- Desktop
- Downloads
- Recent F

Name	Date modified	Type	Size
PTC_Creo_Patcher_SSQ	6/23/2012 9:59 PM	Application	534 KB
ptc_licfile	6/23/2012 9:59 PM	Alphacam Data File	49 KB
readme_SSQ.pdf	6/23/2012 9:59 PM	PDF File	406 KB

- amd240
- Documents
- Pictures
- Music
- Games
- Computer
- Control Panel
- Devices and Printers
- Default Programs
- Help and Support

SSQ Date modified: 6/23/2012 9:59 PM Date created: 7/1/2012 11:37 AM
Size: 534 KB



<< win7-En (C:) > PTC Creo 2.0 M010 Full Multilanguage + HelpCenter Multilanguage x86+x64 > Crack > Crack

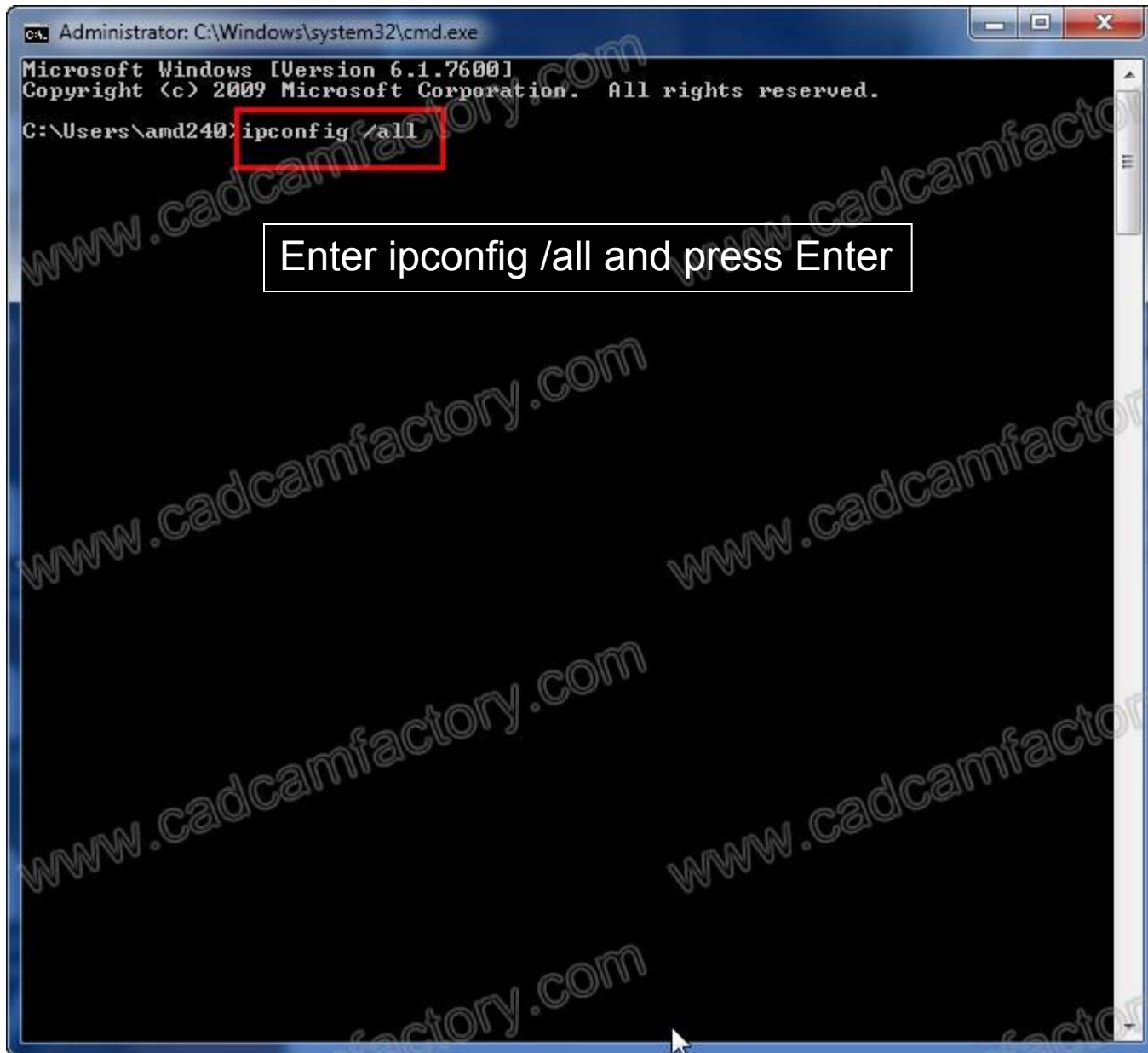
Search Crack

- Organize
- Open
- New folder
- Favorites
 - Desktop
 - Downloads
 - Recent Places

Name	Date modified	Type	Size
PTC_Creo_Patcher_SSQ	6/23/2012 9:59 PM	Application	534 KB
ptc_licfile	6/23/2012 9:59 PM	Alphacam Data File	49 KB
readme_SSQ.pdf	6/23/2012 9:59 PM	PDF File	406 KB

er cmd and press Enter

SSQ Date modified: 6/23/2012 9:59 PM Date created: 7/1/2012 11:37 AM
Size: 534 KB



Administrator: C:\Windows\system32\cmd.exe

```
Microsoft Windows [Version 6.1.7600]  
Copyright (c) 2009 Microsoft Corporation. All rights reserved.  
C:\Users\amd240> ipconfig /all
```

Enter ipconfig /all and press Enter

The image shows a Windows command prompt window with a blue title bar. The window title is "Administrator: C:\Windows\system32\cmd.exe". The command prompt displays the Microsoft Windows version (6.1.7600) and copyright information (© 2009 Microsoft Corporation). The user has entered the command "ipconfig /all", which is highlighted with a red rectangular box. A white text box with a black border is overlaid on the command prompt, containing the instruction "Enter ipconfig /all and press Enter". The background of the command prompt is black with white text. There are several diagonal watermarks across the image that read "www.cadcamfactory.com".

```
Administrator: C:\Windows\system32\cmd.exe

Host Name . . . . . : amd240-PC
Primary Dns Suffix . . . . . :
Node Type . . . . . : Hybrid
IP Routing Enabled. . . . . : No
WINS Proxy Enabled. . . . . : No

Ethernet adapter Local Area Connection:

Connection-specific DNS Suffix . . . :
Description . . . . . : NVIDIA nForce Networking Controller
Physical Address. . . . . : 00-24-1D-6D-2A-08
Dhcp Enabled. . . . . : No
Autoconfiguration Enabled . . . . . : Yes
Link-local IPv6 Address . . . . . : fe80::2984:b2a9:46e7:a918%11(Preferred)
IPv4 Address. . . . . : 192.168.1.103(Preferred)
Subnet Mask . . . . . : 255.255.255.0
Default Gateway . . . . . : 192.168.1.1
DHCPv6 IAID . . . . . : 234890269
DHCPv6 Client DUID. . . . . : 00-01-00-01-17-F0-61-60-00-24-1D-6D-2A-08

DNS Servers . . . . . : 202.103.224.68
                       202.103.225.68
NetBIOS over Tcpip. . . . . : Enabled

Tunnel adapter isatap.{DDCDAD50-84DF-4D5D-952F-42EB9FDCCA9C}:

Media State . . . . . : Media disconnected
Connection-specific DNS Suffix . . . :
Description . . . . . : Microsoft ISATAP Adapter
Physical Address. . . . . : 00-00-00-00-00-00-E0
Dhcp Enabled. . . . . : No
Autoconfiguration Enabled . . . . . : Yes

Tunnel adapter Local Area Connection* 9:

Connection-specific DNS Suffix . . . :
Description . . . . . : Teredo Tunneling Pseudo-Interface
Physical Address. . . . . : 00-00-00-00-00-00-E0
Dhcp Enabled. . . . . : No
Autoconfiguration Enabled . . . . . : Yes
IPv6 Address. . . . . : 2001:0:5ef5:79fb:34a1:db6:3f57:fe98(Preferred)
Link-local IPv6 Address . . . . . : fe80::34a1:db6:3f57:fe98%13(Preferred)
Default Gateway . . . . . :
NetBIOS over Tcpip. . . . . : Disabled

C:\Users\amd240>
```

<< win7-En (C:) >> PTC Creo 2.0 M010 Full Multilanguage + HelpCenter Multilanguage x86+x64 >> Crack >> Crack

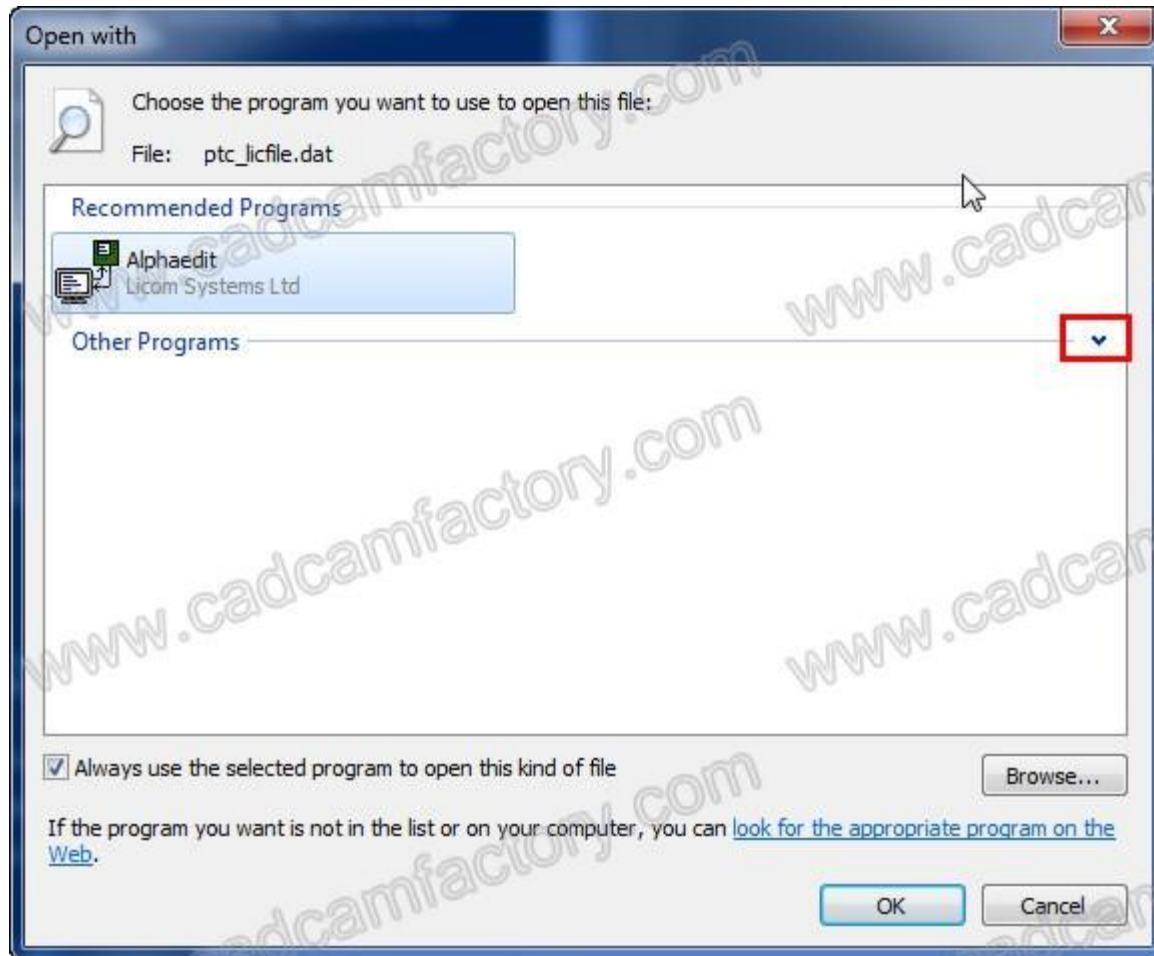
Search Crack

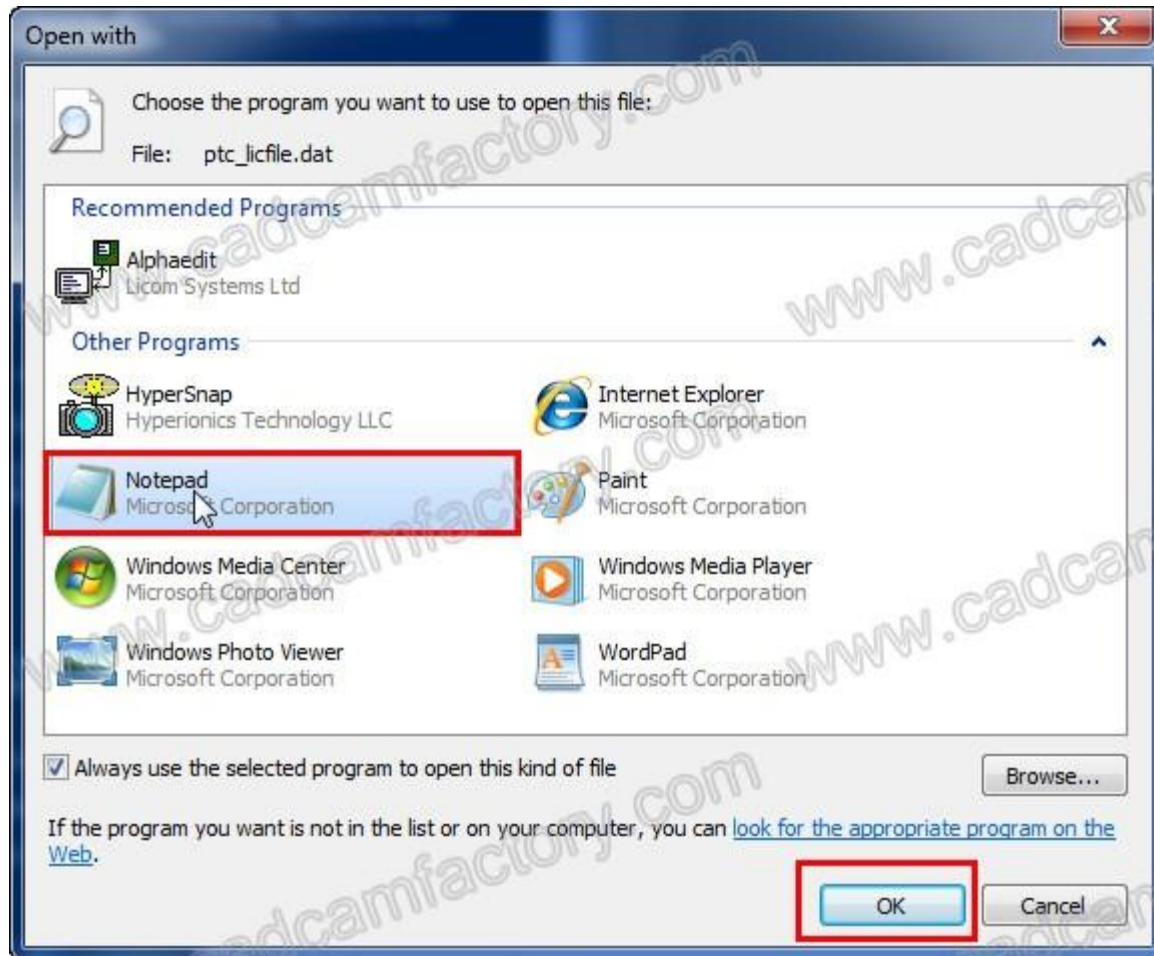
Right click

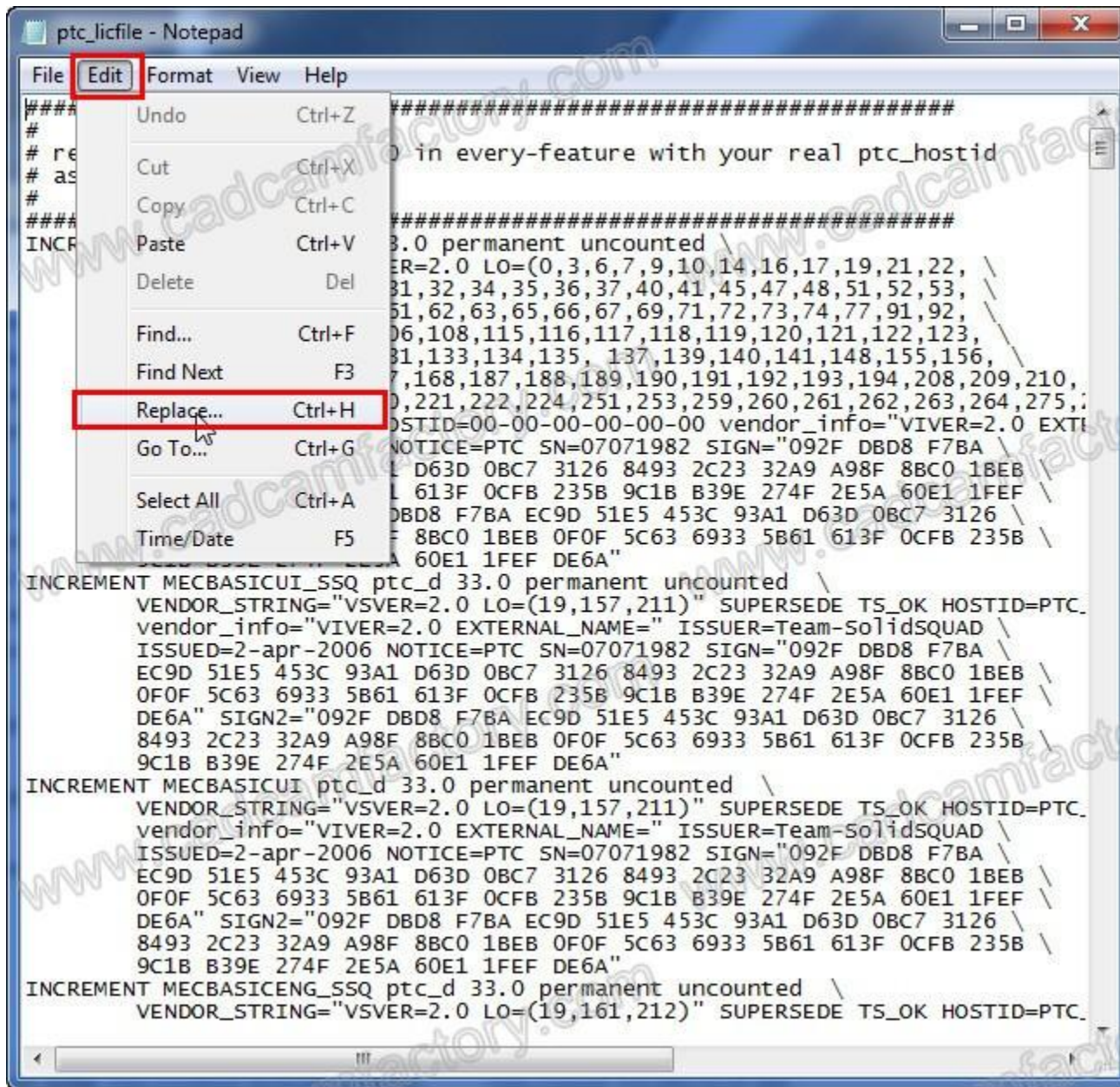
Name	Date modified	Type	Size
PTC_Creo_Patcher_SSQ	6/23/2012 9:59 PM	Application	534 KB
ptc_licfile		Alphacam Data File	49 KB
readme_S		PDF File	406 KB

- Open
- Open with...
- Add to archive...
- Add to "ptc_licfile.rar"
- Compress and email...
- Compress to "ptc_licfile.rar" and email
- Restore previous versions
- Send to >
- Cut
- Copy
- Create shortcut
- Delete
- Rename
- Properties

ptc_licfile Date modified: 6/23/2012 9:59 PM Date created: 7/1/2012 11:37 AM
Alphacam Data File Size: 49 KB







```
Administrator: C:\Windows\system32\cmd.exe
Microsoft Windows [Version 6.1.7600]
Copyright (c) 2009 Microsoft Corporation. All rights reserved.

C:\Users\amd240>ipconfig /all

IP Configuration

Ethernet adapter amd240-PC:

   . . . . . : amd240-PC
   . . . . . :
   . . . . . :
   . . . . . : Hybrid
   . . . . . : No
   . . . . . : No

Ethernet adapter Local Area Connection:

   . . . . . :
   . . . . . :
   . . . . . : NVIDIA nForce Networking Controller
   . . . . . : 00-24-1D-6D-2A-08
   . . . . . : No
   . . . . . : Yes
   . . . . . : fe80::2984:b2a9:46e7:a918%11 (Preferred)
   . . . . . : 192.168.1.103 (Preferred)
   . . . . . :
   . . . . . : 255.255.255.0
   . . . . . : 192.168.1.1
   . . . . . : 234890269
   . . . . . : 00-01-00-01-17-F0-61-60-00-24-1D-6D-2A-08
   . . . . . :
   . . . . . : 202.103.224.68
   . . . . . : 202.103.225.68
   . . . . . : Enabled

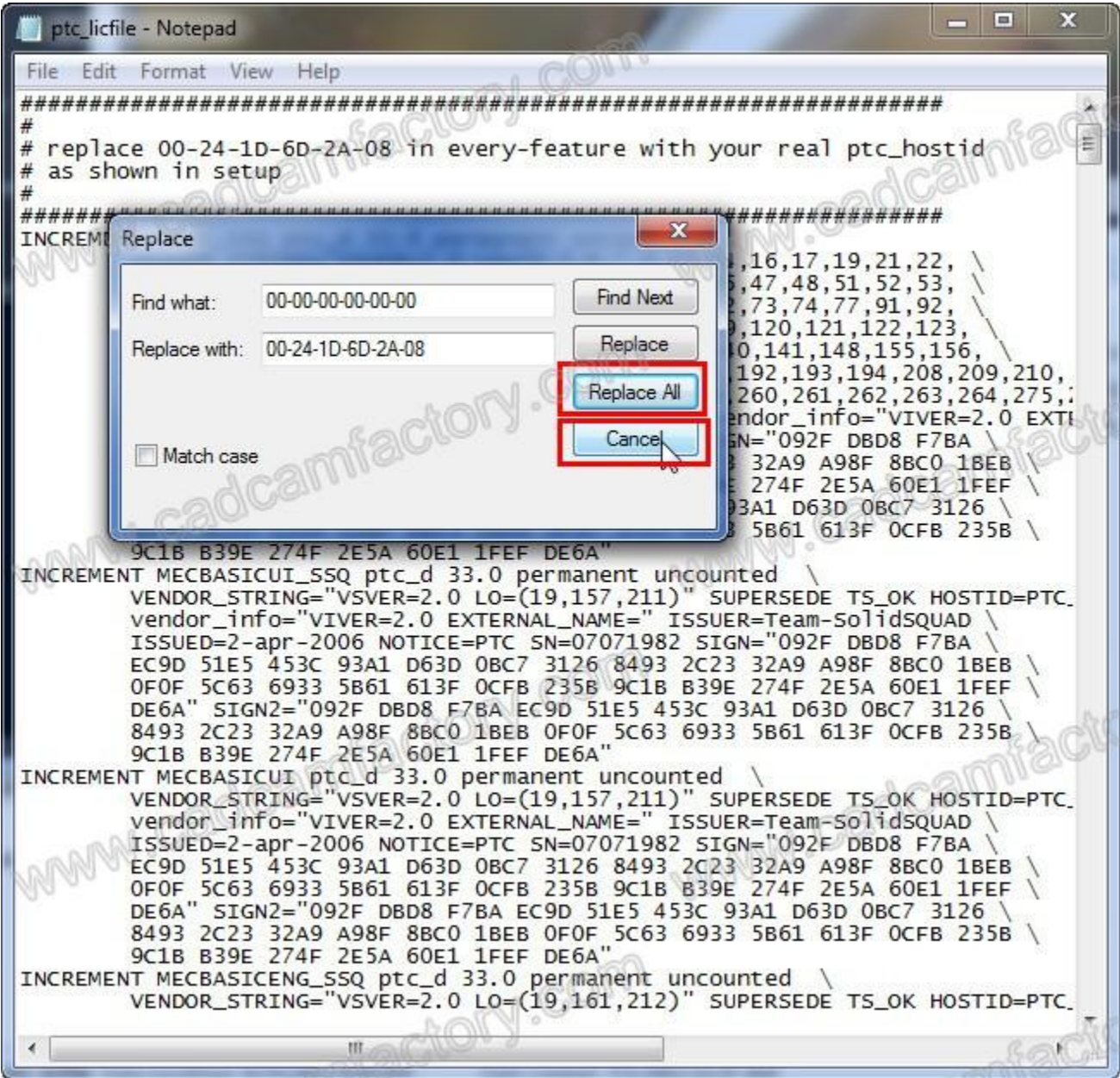
Ethernet adapter isatap.{DDCAD50-84DF-4D5D-952F-42EB9FDCCA9C}:

   . . . . . : Media disconnected
   . . . . . :
   . . . . . : Microsoft ISATAP Adapter
   . . . . . : 00-00-00-00-00-00-E0
   . . . . . : No
   . . . . . : Yes

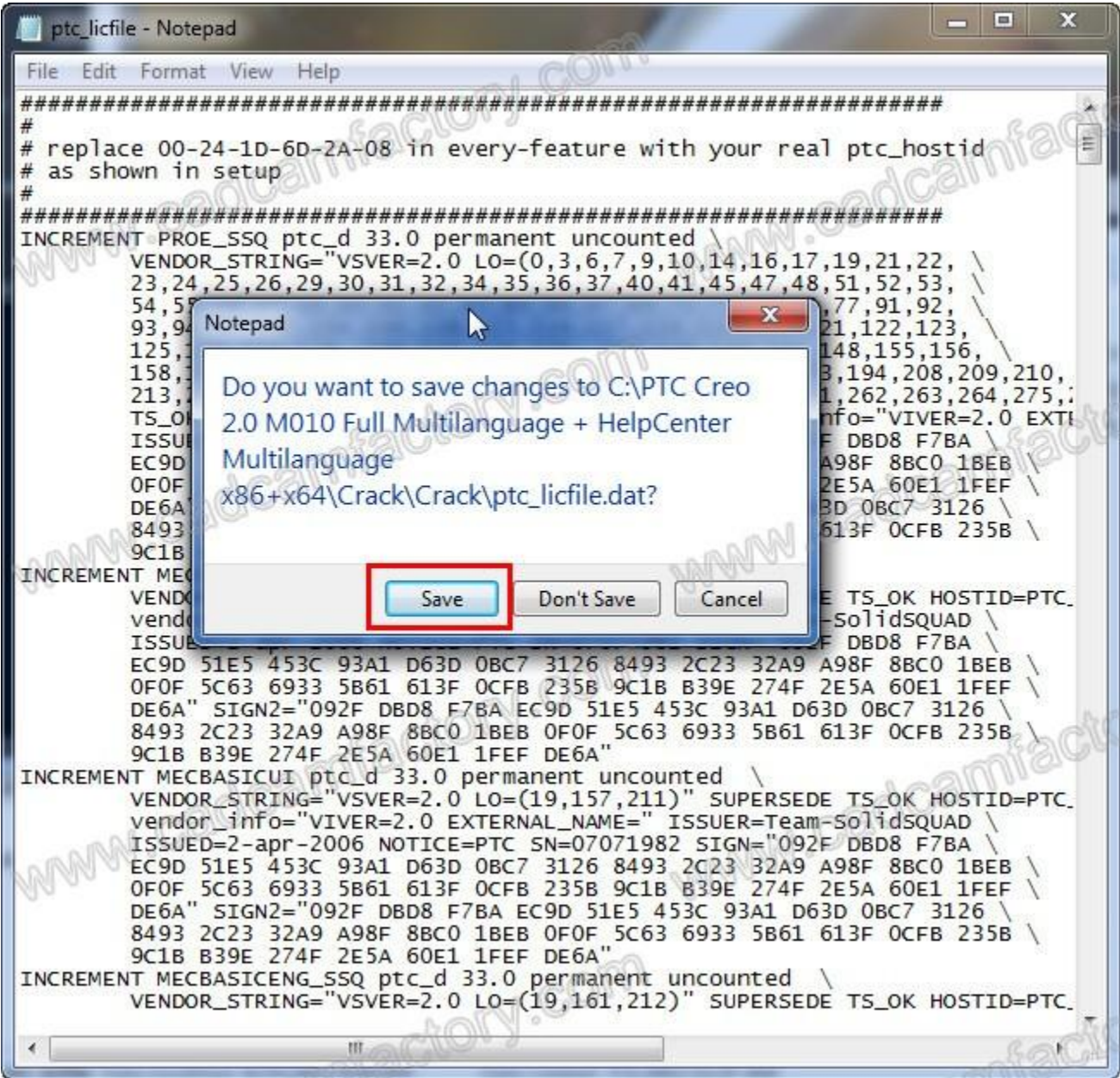
Ethernet adapter Local Area Connection* 9:

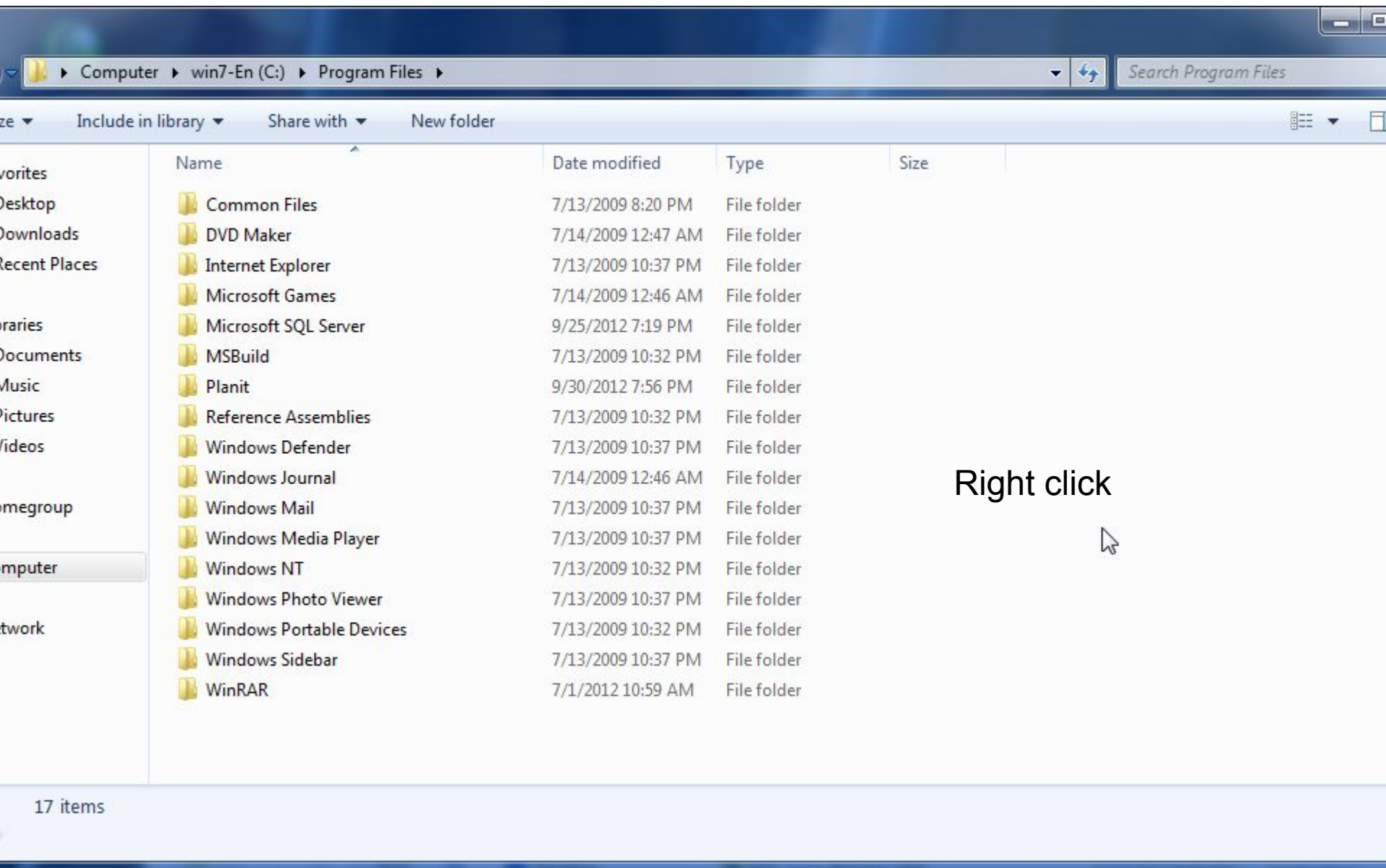
   . . . . . :
   . . . . . : Teredo Tunneling Pseudo-Interface
   . . . . . : 00-00-00-00-00-00-E0
   . . . . . : No
   . . . . . : Yes
   . . . . . : 2001:0:5ef5:79fb:34a1:db6:3f57:fe98
```

```
ptc_licfile - Notepad
File Edit Format View Help
#####
#
# replace 00-00-00-00-00-00 in every-feature with y
# as shown in setup
#
#####
INCREMENTAL
Replace
Find what: 00-00-00-00-00-00
Replace with: 00-24-1D-6D-2A-08
[Find Next] [Replace] [Replace All] [Cancel]
 Match case
9C1B B39E 274F 2E5A 60E1 1FEF DE6A"
INCREMENTAL MECBASICUI ptc_d 33.0 permanent uncounted
VENDOR_STRING="VSVER=2.0 LO=(19,157,211)" SU
vendor_info="VIVER=2.0 EXTERNAL_NAME=" ISSU
ISSUED=2-apr-2006 NOTICE=PTC SN=07071982 SI
EC9D 51E5 453C 93A1 D63D 0BC7 3126 8493 2C2
0F0F 5C63 6933 5B61 613F 0CFB 235B 9C1B B39E
DE6A" SIGN2="092F DBD8 F7BA EC9D 51E5 453C
8493 2C23 32A9 A98F 8BC0 1BEB 0F0F 5C63 693
9C1B B39E 274F 2E5A 60E1 1FEF DE6A"
INCREMENTAL MECBASICUI ptc_d 33.0 permanent uncounted
VENDOR_STRING="VSVER=2.0 LO=(19,157,211)" SU
vendor_info="VIVER=2.0 EXTERNAL_NAME=" ISSU
ISSUED=2-apr-2006 NOTICE=PTC SN=07071982 STA
```

```
ptc_licfile - Notepad
File Edit Format View Help
#####
#
# replace 00-24-1D-6D-2A-08 in every-feature with your real ptc_hostid
# as shown in setup
#
#####
INCREMENT PROE_SSQ ptc_d 33.0 permanent uncouncted \
  VENDOR_STRING="VSVER=2.0 LO=(0,3,6,7,9,10,14,16,17,19,21,22, \
  23,24,25,26,29,30,31,32,34,35,36,37,40,41,45,47,48,51,52,53, \
  54,55,56,57,59,60,61,62,63,65,66,67,69,71,72,73,74,77,91,92, \
  93,94,97,100,104,106,108,115,116,117,118,119,120,121,122,123, \
  125,126,127,128, 131,133,134,135, 137,139,140,141,148,155,156, \
  158,160,163,164,167,168,187,188,189,190,191,192,193,194,208,209,210, \
  213,214,218,219,220,221,222,224,251,253,259,260,261,262,263,264,275, \
  TS_OK HOSTID=PTC_HOSTID=00-24-1D-6D-2A-08 vendor_info="VIVER=2.0 EXT \
  ISSUED=2-apr-2006 NOTICE=PTC SN=07071982 SIGN="092F DBD8 F7BA \
  EC9D 51E5 453C 93A1 D63D 0BC7 3126 8493 2C23 32A9 A98F 8BC0 1BEB \
  0F0F 5C63 6933 5B61 613F 0CFB 235B 9C1B B39E 274F 2E5A 60E1 1FEF \
  DE6A" SIGN2="092F DBD8 F7BA EC9D 51E5 453C 93A1 D63D 0BC7 3126 \
  8493 2C23 32A9 A98F 8BC0 1BEB 0F0F 5C63 6933 5B61 613F 0CFB 235B \
  9C1B B39E 274F 2E5A 60E1 1FEF DE6A"
INCREMENT MECBASICUI_SSQ ptc_d 33.0 permanent uncouncted \
  VENDOR_STRING="VSVER=2.0 LO=(19,157,211)" SUPERSEDE TS_OK HOSTID=PTC. \
  vendor_info="VIVER=2.0 EXTERNAL_NAME=" ISSUER=Team-SolidsQUAD \
  ISSUED=2-apr-2006 NOTICE=PTC SN=07071982 SIGN="092F DBD8 F7BA \
  EC9D 51E5 453C 93A1 D63D 0BC7 3126 8493 2C23 32A9 A98F 8BC0 1BEB \
  0F0F 5C63 6933 5B61 613F 0CFB 235B 9C1B B39E 274F 2E5A 60E1 1FEF \
  DE6A" SIGN2="092F DBD8 F7BA EC9D 51E5 453C 93A1 D63D 0BC7 3126 \
  8493 2C23 32A9 A98F 8BC0 1BEB 0F0F 5C63 6933 5B61 613F 0CFB 235B \
  9C1B B39E 274F 2E5A 60E1 1FEF DE6A"
INCREMENT MECBASICUI ptc_d 33.0 permanent uncouncted \
  VENDOR_STRING="VSVER=2.0 LO=(19,157,211)" SUPERSEDE TS_OK HOSTID=PTC. \
  vendor_info="VIVER=2.0 EXTERNAL_NAME=" ISSUER=Team-SolidsQUAD \
  ISSUED=2-apr-2006 NOTICE=PTC SN=07071982 SIGN="092F DBD8 F7BA \
  EC9D 51E5 453C 93A1 D63D 0BC7 3126 8493 2C23 32A9 A98F 8BC0 1BEB \
  0F0F 5C63 6933 5B61 613F 0CFB 235B 9C1B B39E 274F 2E5A 60E1 1FEF \
  DE6A" SIGN2="092F DBD8 F7BA EC9D 51E5 453C 93A1 D63D 0BC7 3126 \
  8493 2C23 32A9 A98F 8BC0 1BEB 0F0F 5C63 6933 5B61 613F 0CFB 235B \
  9C1B B39E 274F 2E5A 60E1 1FEF DE6A"
INCREMENT MECBASICENG_SSQ ptc_d 33.0 permanent uncouncted \
  VENDOR_STRING="VSVER=2.0 LO=(19,161,212)" SUPERSEDE TS_OK HOSTID=PTC.
```





Computer > win7-En (C:) > Program Files

Search Program Files

Include in library Share with New folder

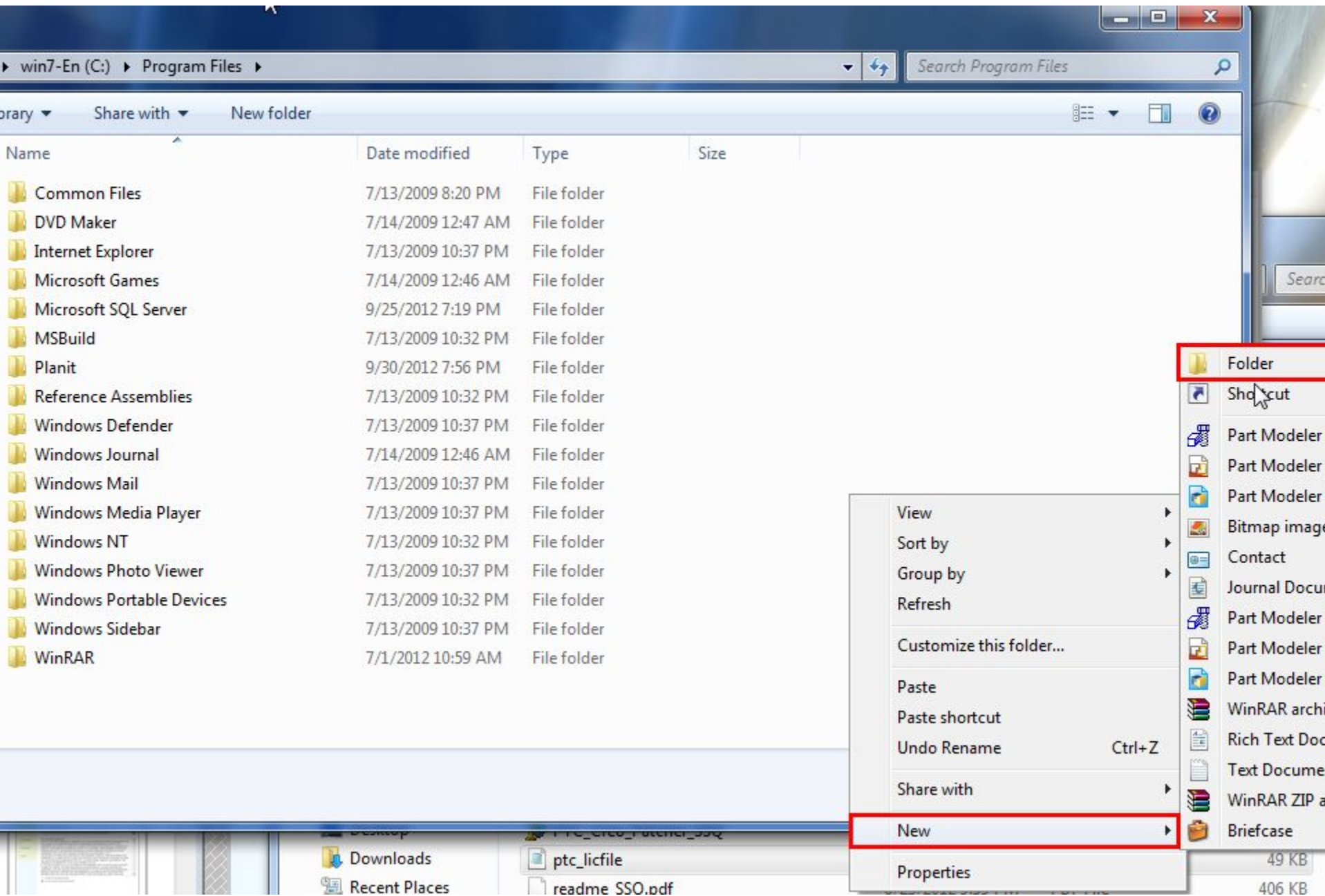
- Favorites
- Desktop
- Downloads
- Recent Places
- Libraries
- Documents
- Music
- Pictures
- Videos
- Homegroup
- Computer
- Network

Name	Date modified	Type	Size
Common Files	7/13/2009 8:20 PM	File folder	
DVD Maker	7/14/2009 12:47 AM	File folder	
Internet Explorer	7/13/2009 10:37 PM	File folder	
Microsoft Games	7/14/2009 12:46 AM	File folder	
Microsoft SQL Server	9/25/2012 7:19 PM	File folder	
MSBuild	7/13/2009 10:32 PM	File folder	
Planit	9/30/2012 7:56 PM	File folder	
Reference Assemblies	7/13/2009 10:32 PM	File folder	
Windows Defender	7/13/2009 10:37 PM	File folder	
Windows Journal	7/14/2009 12:46 AM	File folder	
Windows Mail	7/13/2009 10:37 PM	File folder	
Windows Media Player	7/13/2009 10:37 PM	File folder	
Windows NT	7/13/2009 10:32 PM	File folder	
Windows Photo Viewer	7/13/2009 10:37 PM	File folder	
Windows Portable Devices	7/13/2009 10:32 PM	File folder	
Windows Sidebar	7/13/2009 10:37 PM	File folder	
WinRAR	7/1/2012 10:59 AM	File folder	

Right click



17 items



win7-En (C:) > Program Files

Search Program Files

Library Share with New folder

Name	Date modified	Type	Size
Common Files	7/13/2009 8:20 PM	File folder	
DVD Maker	7/14/2009 12:47 AM	File folder	
Internet Explorer	7/13/2009 10:37 PM	File folder	
Microsoft Games	7/14/2009 12:46 AM	File folder	
Microsoft SQL Server	9/25/2012 7:19 PM	File folder	
MSBuild	7/13/2009 10:32 PM	File folder	
Planit	9/30/2012 7:56 PM	File folder	
Reference Assemblies	7/13/2009 10:32 PM	File folder	
Windows Defender	7/13/2009 10:37 PM	File folder	
Windows Journal	7/14/2009 12:46 AM	File folder	
Windows Mail	7/13/2009 10:37 PM	File folder	
Windows Media Player	7/13/2009 10:37 PM	File folder	
Windows NT	7/13/2009 10:32 PM	File folder	
Windows Photo Viewer	7/13/2009 10:37 PM	File folder	
Windows Portable Devices	7/13/2009 10:32 PM	File folder	
Windows Sidebar	7/13/2009 10:37 PM	File folder	
WinRAR	7/1/2012 10:59 AM	File folder	

- View
- Sort by
- Group by
- Refresh
- Customize this folder...
- Paste
- Paste shortcut
- Undo Rename Ctrl+Z
- Share with
- New**
- Properties

- Folder**
- Shortcut
- Part Modeler
- Part Modeler
- Part Modeler
- Part Modeler
- Bitmap image
- Contact
- Journal Document
- Part Modeler
- Part Modeler
- Part Modeler
- WinRAR archive
- Rich Text Document
- Text Document
- WinRAR ZIP archive
- Briefcase

Downloads
Recent Places

ptc_licfile
readme SSO.pdf

49 KB
406 KB

Computer > win7-En (C:) > Program Files

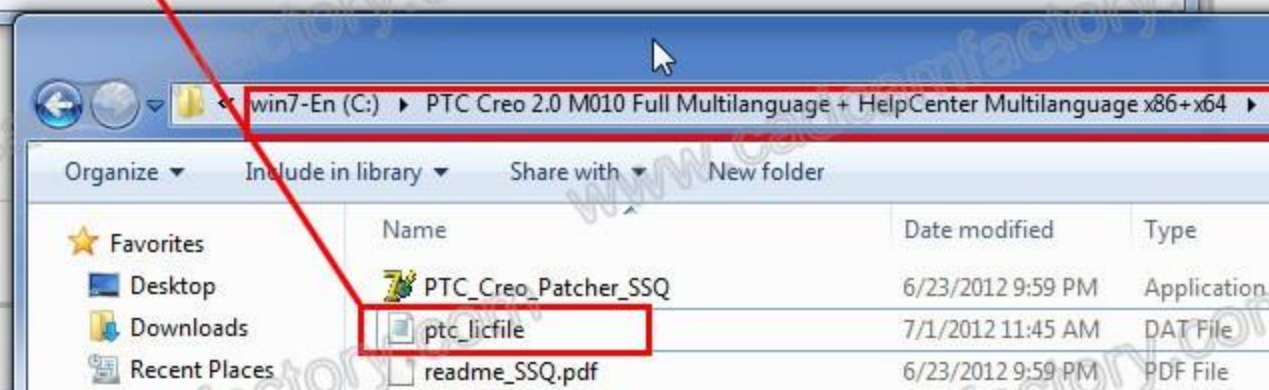
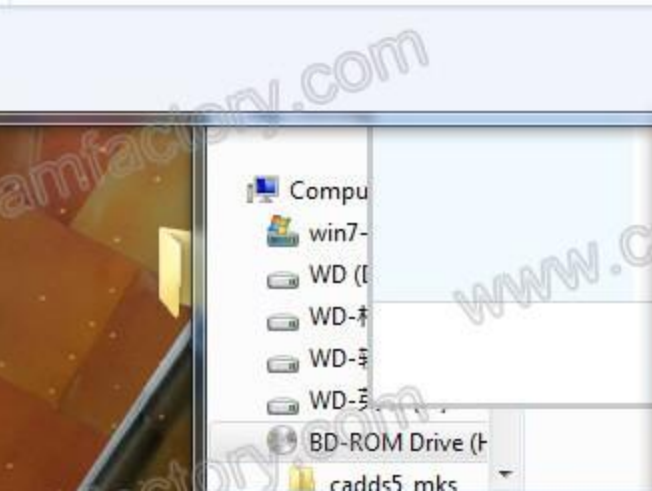
Search Program Files

Open Include in library Share with New folder

Name	Date modified	Type	Size
Common Files	7/13/2009 8:20 PM	File folder	
DVD Maker	7/14/2009 12:47 AM	File folder	
Internet Explorer	7/13/2009 10:37 PM	File folder	
Microsoft Games	7/14/2009 12:46 AM	File folder	
Microsoft SQL Server	9/25/2012 7:19 PM	File folder	
MSBuild	7/13/2009 10:32 PM	File folder	
PTC	7/1/2012 11:47 AM	File folder	
Planit	9/30/2012 7:56 PM	File folder	
Reference Assemblies	7/13/2009 10:32 PM	File folder	
Windows Defender	7/13/2009 10:37 PM	File folder	
Windows Journal	7/14/2009 12:46 AM	File folder	
Windows Mail	7/13/2009 10:37 PM	File folder	
Windows Media Player	7/13/2009 10:37 PM	File folder	
Windows NT	7/13/2009 10:32 PM	File folder	
Windows Photo Viewer	7/13/2009 10:37 PM	File folder	
Windows Portable Devices	7/13/2009 10:32 PM	File folder	
Windows Sidebar	7/13/2009 10:37 PM	File folder	
WinRAR	7/1/2012 10:59 AM	File folder	

New folder Date modified: 7/1/2012 11:47 AM
File folder

Name	Date modified	Type	Size
Common Files	7/13/2009 8:20 PM	File folder	
DVD Maker	7/14/2009 12:47 AM	File folder	
Internet Explorer	7/13/2009 10:37 PM	File folder	
Microsoft Games	7/14/2009 12:46 AM	File folder	
Microsoft SQL Server	9/25/2012 7:19 PM	File folder	
MSBuild	7/13/2009 10:32 PM	File folder	
Planit	9/30/2012 7:56 PM	File folder	
PTC	7/1/2012 11:47 AM	File folder	
Reference Assemblies	7/13/2009 10:32 PM	File folder	
Windows Defender	7/13/2009 10:37 PM	File folder	
Windows Journal	7/14/2009 12:46 AM	File folder	
Windows Mail	7/13/2009 10:37 PM	File folder	
Windows Media Player	7/13/2009 10:37 PM	File folder	
Windows NT	7/13/2009 10:32 PM	File folder	
Windows Photo Viewer	7/13/2009 10:37 PM	File folder	
Windows Portable Devices	7/13/2009 10:32 PM	File folder	
Windows Sidebar	7/13/2009 10:37 PM	File folder	
WinRAR	7/1/2012 10:59 AM	File folder	

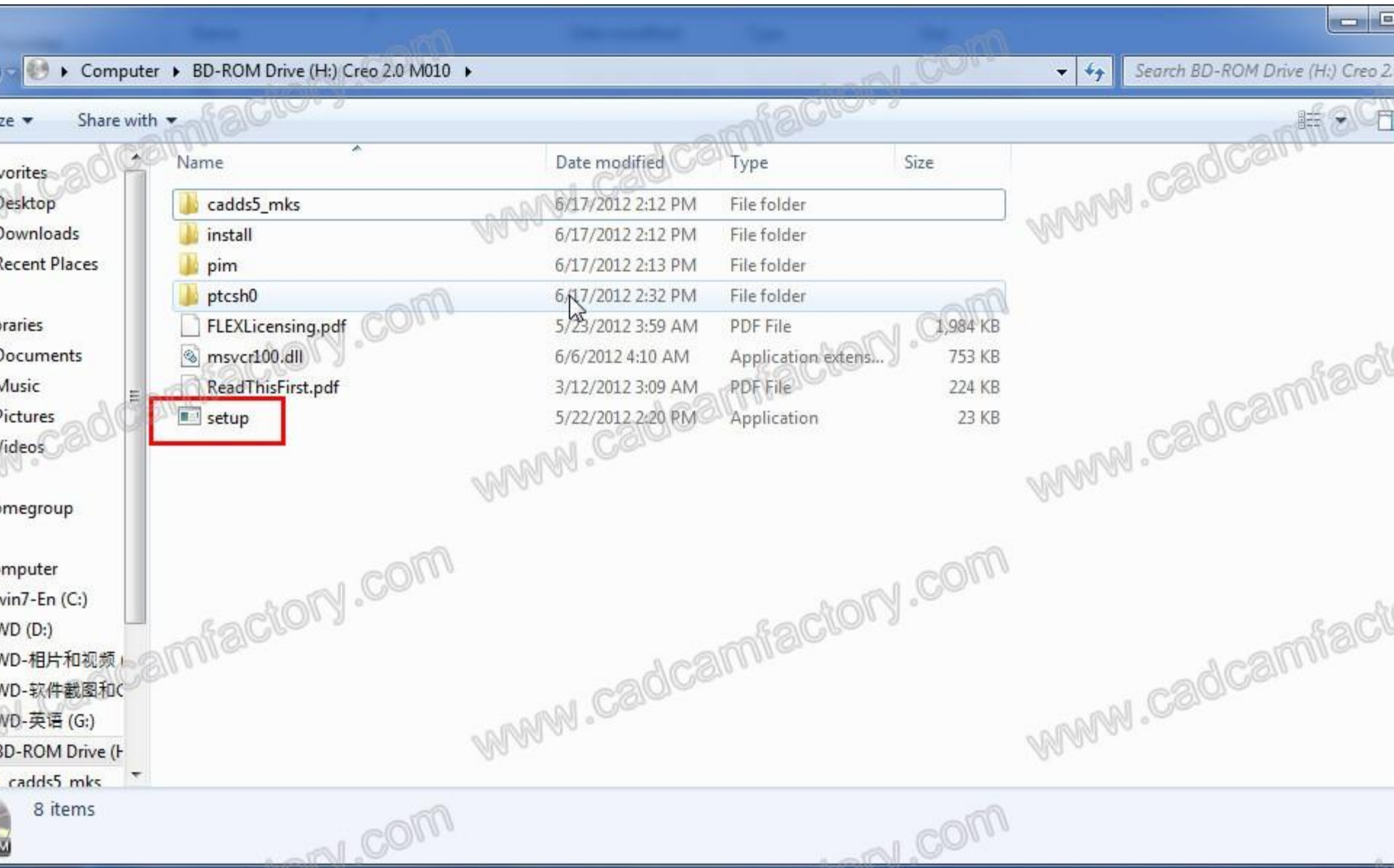


Computer > win7-En (C:) > Program Files > PTC

Open New folder

Name	Date modified	Type	Size
ptc_licfile	7/1/2012 11:45 AM	DAT File	49 KB

ptc_licfile Date modified: 7/1/2012 11:45 AM Date created: 7/1/2012 11:48 AM
DAT File Size: 48.8 KB



Name	Date modified	Type	Size
cadds5_mks	6/17/2012 2:12 PM	File folder	
install	6/17/2012 2:12 PM	File folder	
pim	6/17/2012 2:13 PM	File folder	
ptcsh0	6/17/2012 2:32 PM	File folder	
FLEXlicensing.pdf	5/23/2012 3:59 AM	PDF File	1,984 KB
msvcr100.dll	6/6/2012 4:10 AM	Application extens...	753 KB
ReadThisFirst.pdf	3/12/2012 3:09 AM	PDF File	224 KB
setup	5/22/2012 2:20 PM	Application	23 KB

Introduction

Software Agreement

Licenses

Applications

Installation

Finish

PTC®

Welcome to PTC's Installation Assistant

Select a task:

- Install new software
- Customize existing software
- Setup license

Next

✓ Introduction

Software Agreement

Licenses

Applications

Installation

Finish

PTC®

Sign Agreement

To continue you must read and agree to the terms of the software license agreement.



PTC CUSTOMER AGREEMENT

THIS PTC CUSTOMER AGREEMENT ("AGREEMENT") IS A LEGAL AGREEMENT BETWEEN THE INDIVIDUAL, OR THE COMPANY OR OTHER ORGANIZATION ON WHOSE BEHALF SUCH INDIVIDUAL ACCEPTS THIS AGREEMENT, THAT EITHER (A) CLICKS THE "IACCEPT" BUTTON BELOW OR (B) INSTALLS, ACCESSES, OR USES ANY SOFTWARE OR DOCUMENTATION FROM PTC ("CUSTOMER"), AND PARAMETRIC TECHNOLOGY CORPORATION OR, IF THE PURCHASE WAS MADE IN A COUNTRY SPECIFIED ON SCHEDULE A TO THIS AGREEMENT, THE PTC AFFILIATE SPECIFIED ON SCHEDULE A (AS APPLICABLE, "PTC").

PLEASE READ THE TERMS AND CONDITIONS OF THIS AGREEMENT CAREFULLY BEFORE ACCEPTING THIS AGREEMENT. BY CLICKING ON THE "IACCEPT" BUTTON BELOW OR BY INSTALLING, ACCESSING, OR USING ANY SOFTWARE OR DOCUMENTATION FROM PTC, CUSTOMER HEREBY AGREES TO BE BOUND BY THIS AGREEMENT AND REPRESENTS THAT IT IS AUTHORIZED TO DO SO.

IF YOU DO NOT AGREE TO ALL OF THE TERMS OF THIS AGREEMENT OR IF YOU DO NOT HAVE AUTHORITY TO BIND THE COMPANY OR OTHER ORGANIZATION ON WHOSE BEHALF YOU ARE ACCEPTING THIS AGREEMENT, CLICK THE "I DECLINE" BUTTON AND RETURN TO PTC THE SOFTWARE AND DOCUMENTATION PRODUCTS PROVIDED TOGETHER WITH THIS AGREEMENT IN ACCORDANCE WITH THE INSTRUCTIONS PROVIDED WHEN YOU CLICK THE "I DECLINE" BUTTON. NOTE THAT FAILURE TO COMPLY WITH SUCH

- I accept the license agreement
- I do not accept the license agreement

← Back

Next →

✓ Introduction

Software Agreement

Licenses

Applications

Installation

Finish

PTC®

Sign Agreement

To continue you must read and agree to the terms of the software license agreement.



PTC CUSTOMER AGREEMENT

THIS PTC CUSTOMER AGREEMENT ("AGREEMENT") IS A LEGAL AGREEMENT BETWEEN THE INDIVIDUAL, OR THE COMPANY OR OTHER ORGANIZATION ON WHOSE BEHALF SUCH INDIVIDUAL ACCEPTS THIS AGREEMENT, THAT EITHER (A) CLICKS THE "IACCEPT" BUTTON BELOW OR (B) INSTALLS, ACCESSES, OR USES ANY SOFTWARE OR DOCUMENTATION FROM PTC ("CUSTOMER"), AND PARAMETRIC TECHNOLOGY CORPORATION OR, IF THE PURCHASE WAS MADE IN A COUNTRY SPECIFIED ON SCHEDULE A TO THIS AGREEMENT, THE PTC AFFILIATE SPECIFIED ON SCHEDULE A (AS APPLICABLE, "PTC").

PLEASE READ THE TERMS AND CONDITIONS OF THIS AGREEMENT CAREFULLY BEFORE ACCEPTING THIS AGREEMENT. BY CLICKING ON THE "IACCEPT" BUTTON BELOW OR BY INSTALLING, ACCESSING, OR USING ANY SOFTWARE OR DOCUMENTATION FROM PTC, CUSTOMER HEREBY AGREES TO BE BOUND BY THIS AGREEMENT AND REPRESENTS THAT IT IS AUTHORIZED TO DO SO.

IF YOU DO NOT AGREE TO ALL OF THE TERMS OF THIS AGREEMENT OR IF YOU DO NOT HAVE AUTHORITY TO BIND THE COMPANY OR OTHER ORGANIZATION ON WHOSE BEHALF YOU ARE ACCEPTING THIS AGREEMENT, CLICK THE "I DECLINE" BUTTON AND RETURN TO PTC THE SOFTWARE AND DOCUMENTATION PRODUCTS PROVIDED TOGETHER WITH THIS AGREEMENT IN ACCORDANCE WITH THE INSTRUCTIONS PROVIDED WHEN YOU CLICK THE "I DECLINE" BUTTON. NOTE THAT FAILURE TO COMPLY WITH SUCH

- I accept the license agreement
- I do not accept the license agreement

← Back

Next →

✓ Introduction

✓ Software Agreement

Licenses

Applications

Installation

Finish

PTC®

License Identification

Licenses allow PTC to identify which applications are authorized to run on your machine.

● Simple License Entry

Enter your Sales Order # or Product Code

⊕ Advanced License Entry

● License Summary

If we detected license sources for you, they are listed below. Click the "-" button to remove unwanted sources from the list. Click the "+" button to add more entries into the list.

If you already have a license file, drag and drop it into the field below.

	Source	Status
<input type="button" value="-"/>	<input type="text"/>	

✓ Introduction

✓ Software Agreement

Licenses

Applications

Installation

Finish

PTC®

License Identification

Licenses allow PTC to identify which applications are authorized to run on your machine.

Simple License Entry

Enter your Sales Order # or Product Code

Advanced License Entry

License Summary

If we detected license sources for you, they are listed below. Click the "-" button to remove unwanted sources from the list. Click the "+" button to add more entries into the list. If you already have a license file, drag and drop it into the field below.

	Source	Status
<input type="button" value="-"/>	<input type="text" value="c:\program files\PTC\ptc_licfile.dat"/>	

Enter c:\program files\PTC\ptc_licfile.dat

✓ Introduction

✓ Software Agreement

Licenses

Applications

Installation

Finish

PTC®

License Identification

Licenses allow PTC to identify which applications are authorized to run on your machine.

● Simple License Entry

Enter your Sales Order # or Product Code

Install Licensing

⊕ Advanced License Entry

● License Summary

If we detected license sources for you, they are listed below. Click the "-" button to remove unwanted sources from the list. Click the "+" button to add more entries into the list. If you already have a license file, drag and drop it into the field below.

	Source	Status
+ -	c:\program files\PTC\ptc_licfile.dat	Available

← Back

Next →

✓ Introduction

✓ Software Agreement

✓ Licenses

Applications

Installation

Finish

PTC®

Application Selection

All applications will be installed at:

WIN7-EN(C:) ▶ Program Files ▶ PTC

Choose from the list below:

Customize ...

<input checked="" type="checkbox"/>	Application	Size	Version	Version Status
<input type="checkbox"/>	Creo Common Files	3.4 GB	2.0 M010	New
<input type="checkbox"/>	Creo Direct	26 MB	2.0 M010	New
<input type="checkbox"/>	Creo Distributed Services M...	69 MB	2.0 M010	New
<input type="checkbox"/>	Creo Layout	26 MB	2.0 M010	New
<input checked="" type="checkbox"/>	MKS Platform Components ...	79 MB	2.0 M010	New
<input type="checkbox"/>	Creo Options Modeler	26 MB	2.0 M010	New
<input type="checkbox"/>	Creo Parametric	381 MB	2.0 M010	New
<input checked="" type="checkbox"/>	Quality Agent	47 MB	2.0 M010	Required
<input type="checkbox"/>	Creo Simulate	768 MB	2.0 M010	New

Total Space Needed: **126 MB** (21 GB Available)

Enable Quality Agent data collection for these applications.

Quality Agent collects and transmits data on system use and performance, user data and use metrics. For commercial software user, Quality Agent will not report on these applications if disabled. Please read this [IMPORTANT INFORMATION ON DATA COLLECTION BEFORE PROCEEDING](#).

Back

Install ▶

Introduction Software Agreement Licenses Applications Installation Finish

PTC®

Application Selection

All applications will be installed at:

WIN7-EN(C:) \ Program Files \ PTC

Choose from the list below:

Customize ...

<input checked="" type="checkbox"/>	Application	Size	Version	Version Status
<input checked="" type="checkbox"/>	Creo Common Files	3.4 GB	2.0 M010	Required
<input checked="" type="checkbox"/>	Creo Direct	26 MB	2.0 M010	New
<input checked="" type="checkbox"/>	Creo Distributed Services M...	69 MB	2.0 M010	New
<input checked="" type="checkbox"/>	Creo Layout	26 MB	2.0 M010	New
<input checked="" type="checkbox"/>	MKS Platform Components ...	79 MB	2.0 M010	New
<input checked="" type="checkbox"/>	Creo Options Modeler	26 MB	2.0 M010	New
<input checked="" type="checkbox"/>	Creo Parametric	381 MB	2.0 M010	New
<input type="checkbox"/>	Quality Agent	47 MB	2.0 M010	Required
<input checked="" type="checkbox"/>	Creo Simulate	768 MB	2.0 M010	New

Total Space Needed: **4.8 GB** (21 GB Available) Enable Quality Agent data collection for these applications.

Quality Agent collects and transmits data on system use and performance, user data and use metrics. For commercial software user, Quality Agent will not report on these applications if disabled. Please read this [IMPORTANT INFORMATION ON DATA COLLECTION BEFORE PROCEEDING](#).

Back

Install >

- ✓ Introduction
- ✓ Software Agreement
- ✓ Licenses
- ✓ Applications
- Installation**
- Finish



Installation Progress

The Following applications are being downloaded and installed:

Application	Status	Progress	
Creo Common Files	Pending	0 %	⏪ ✖
Creo Direct	Pending	0 %	⏪ ✖
Creo Distributed Ser...	Pending	0 %	⏪ ✖
Creo Layout	Pending	1 %	⏪ ✖
MKS Platform Compo...	Pending	— %	⏪ ✖
Creo Options Modeler	Pending	0 %	⏪ ✖
Creo Parametric	Pending	0 %	⏪ ✖
Quality Agent	Installing Files	— %	⏪ ✖
Creo Simulate	Pending	0 %	⏪ ✖

Back

Finish

✓ Introduction

✓ Software Agreement

✓ Licenses

✓ Applications

✓ Installation

Finish

PTC®

Installation Progress

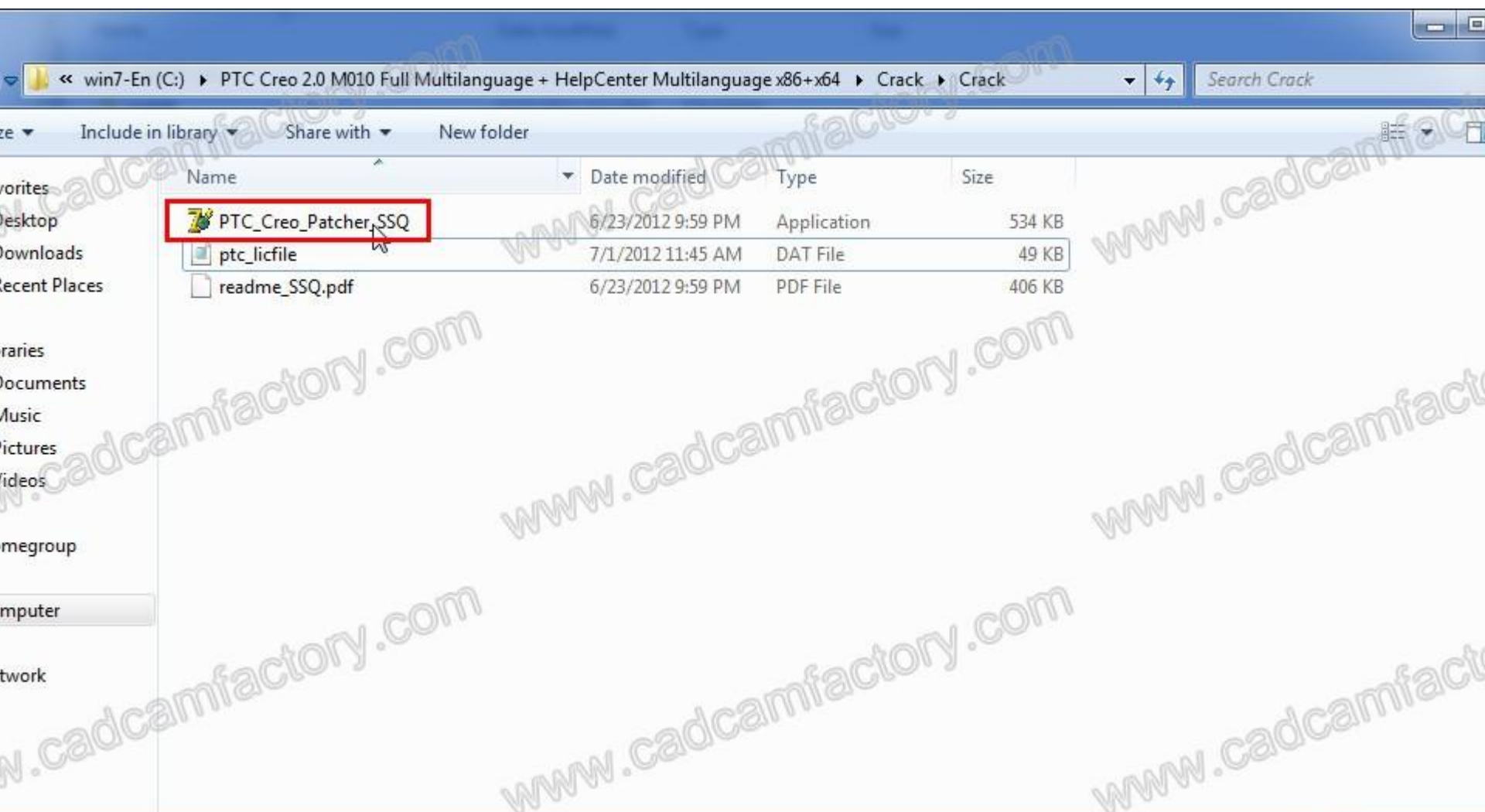
The Following applications are being downloaded and installed:




Application	Status	Progress	
Creo Common Files	Complete	100 %	↶ ✕
Creo Direct	Complete	100 %	↶ ✕
Creo Distributed Ser...	Complete	100 %	↶ ✕
Creo Layout	Complete	100 %	↶ ✕
MKS Platform Compo...	Complete	100 %	↶ ✕
Creo Options Modeler	Complete	100 %	↶ ✕
Creo Parametric	Complete	100 %	↶ ✕
Quality Agent	Complete	100 %	↶ ✕
Creo Simulate	Complete	100 %	↶ ✕

You Are Done! Click 'Finish' to exit the Installation Assistant.

← Back

Finish →



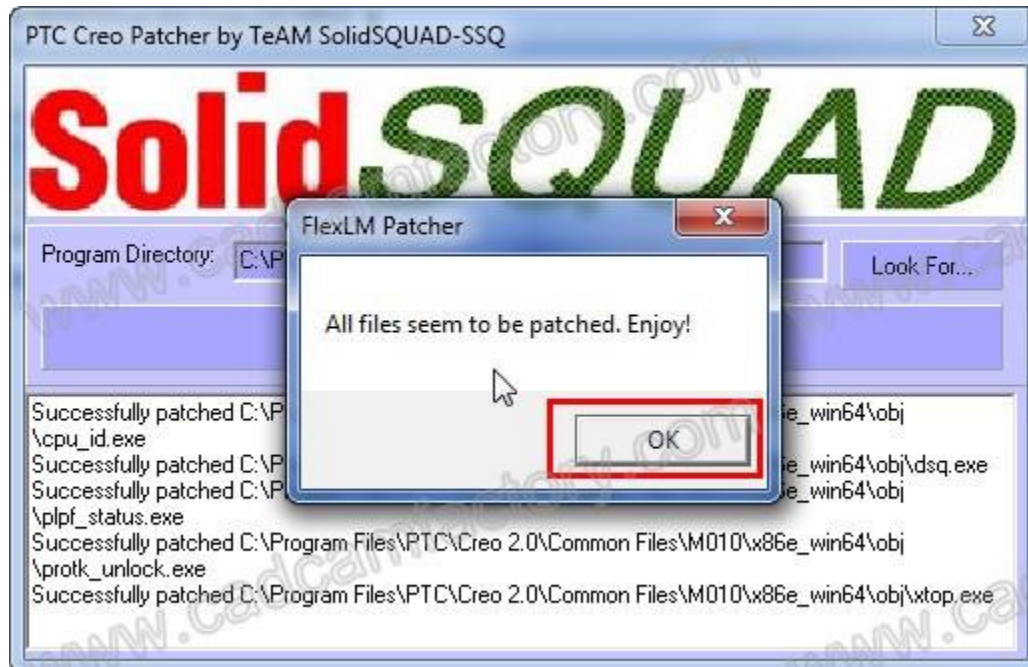
Name	Date modified	Type	Size
 PTC_Creo_Patcher_SSQ	6/23/2012 9:59 PM	Application	534 KB
 ptc_licfile	7/1/2012 11:45 AM	DAT File	49 KB
 readme_SSQ.pdf	6/23/2012 9:59 PM	PDF File	406 KB











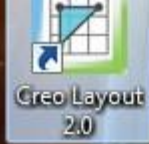
Run this patch again











Creo Layout
2.0



Creo Direct
2.0



Creo
Parametri...



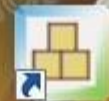
ModelCH...



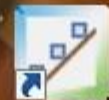
Creo
Simulate 2.0



Thermal



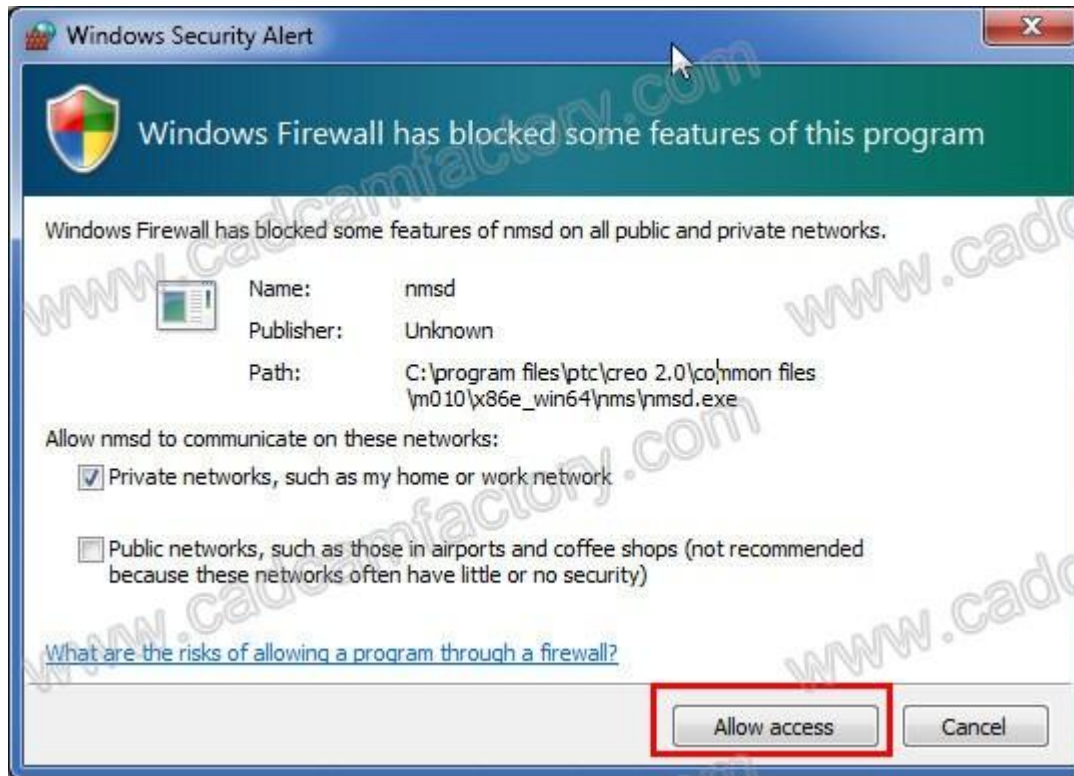
Structure



Creo
Distribute...




Creo Options
Modeler 2.0



ct Working Erase Not Model System Play
 Directory Displayed Display Colors Trail File
 Settings Utilities

About Creo Parametric



creo™
A PTC Product

Creo Parametric

Release:	2.0
Date Code:	M010
Service Contract Number:	NONE

Copyright © 2012 Parametric Technology Corporation and/or its Subsidiary Companies. All Rights Reserved. Copyright for PTC software products is with Parametric Technology Corporation, its subsidiary companies (collectively "PTC"), and their respective licensors. This software is provided under written license agreement, contains valuable trade secrets and proprietary information, and is protected by the copyright laws of the United States and other countries. It may not be copied or distributed in any form or medium, disclosed to third parties, or used in any manner not provided for in the software licenses agreement except with written prior approval from PTC.


UNAUTHORIZED USE OF SOFTWARE OR ITS DOCUMENTATION CAN RESULT IN CIVIL DAMAGES AND CRIMINAL PROSECUTION.

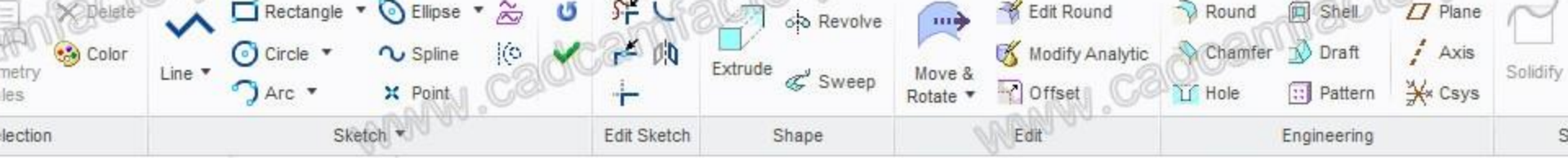
PTC regards software piracy as the crime it is, and we view offenders accordingly. We do not tolerate the piracy of PTC software products. We pursue (both civilly and criminally) those who pirate software and use

[Close](#)



[Open in new window](#)


 Get ADOBE®
FLASH® PLAYER



About Creo Direct

creo™

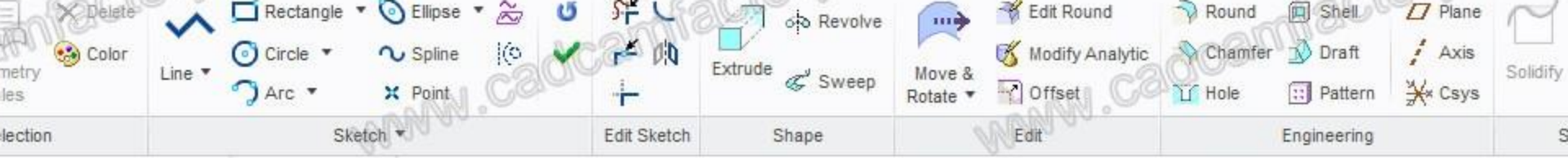
A PTC Product

creo direct

Release:
Date Code:
Service Contract Number

Copyright © 2012 Parametric Technology Corporation and/or Its Subsidiary Companies. All Rights Reserved. Copyright for PTC software products is with Parametric Technology Corporation, its subsidiaries (collectively "PTC"), and their respective licensors. This software is provided under written license and contains valuable trade secrets and proprietary information, and is protected by the copyright laws of the United States and other countries. It may not be copied or distributed in any form or medium without the prior written approval of PTC. UNAUTHORIZED USE OF SOFTWARE OR ITS DOCUMENTATION CAN RESULT IN CIVIL DAMAGES AND CRIMINAL PROSECUTION.

PTC regards software piracy as the crime it is, and we view offenders accordingly. We do not tolerate piracy of PTC software products. We pursue (both civilly and criminally) those who pirate software.



About Creo Direct

creo™

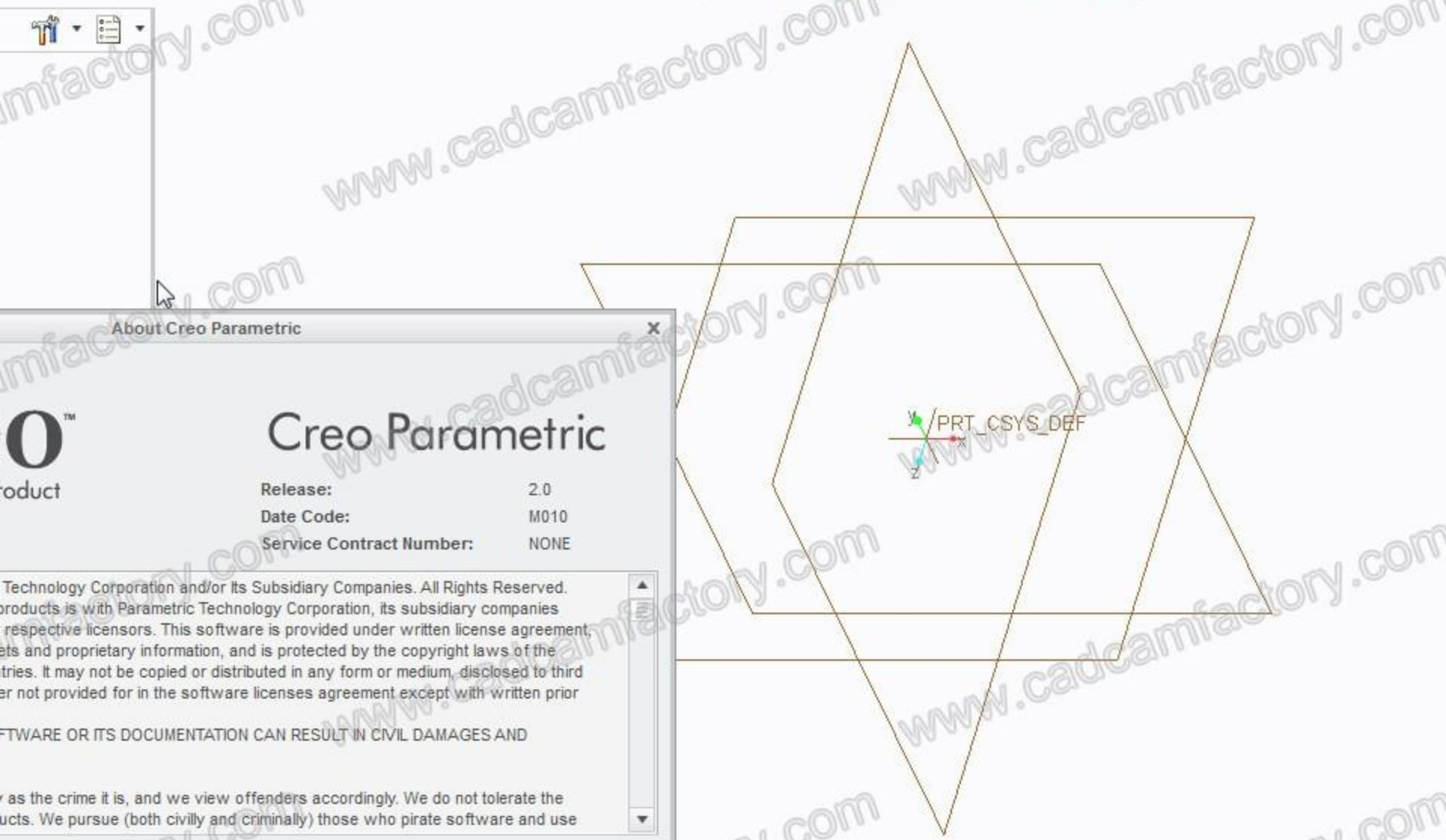
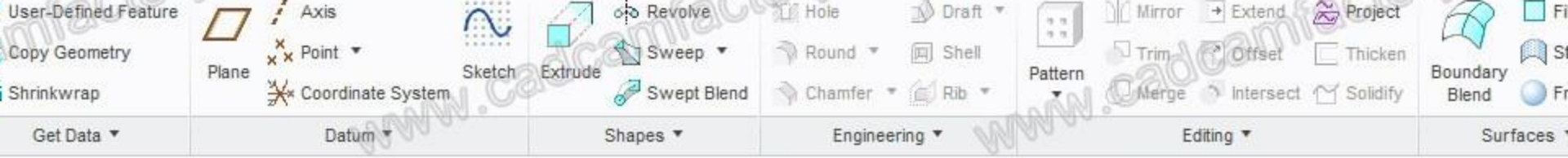
A PTC Product

creo direct


Release:
Date Code:
Service Contract Number

Copyright © 2012 Parametric Technology Corporation and/or Its Subsidiary Companies. All Rights Reserved. Copyright for PTC software products is with Parametric Technology Corporation, its subsidiaries (collectively "PTC"), and their respective licensors. This software is provided under written license and contains valuable trade secrets and proprietary information, and is protected by the copyright laws of the United States and other countries. It may not be copied or distributed in any form or medium without the prior written approval of PTC. UNAUTHORIZED USE OF SOFTWARE OR ITS DOCUMENTATION CAN RESULT IN CIVIL DAMAGES AND CRIMINAL PROSECUTION.

PTC regards software piracy as the crime it is, and we view offenders accordingly. We do not tolerate piracy of PTC software products. We pursue (both civilly and criminally) those who pirate software.



About Creo Parametric



Creo Parametric

Release:	2.0
Date Code:	M010
Service Contract Number:	NONE

Technology Corporation and/or its Subsidiary Companies. All Rights Reserved. products is with Parametric Technology Corporation, its subsidiary companies respective licensors. This software is provided under written license agreement, sets and proprietary information, and is protected by the copyright laws of the tries. It may not be copied or distributed in any form or medium, disclosed to third er not provided for in the software licenses agreement except with written prior

FTWARE OR ITS DOCUMENTATION CAN RESULT IN CIVIL DAMAGES AND

y as the crime it is, and we view offenders accordingly. We do not tolerate the icts. We pursue (both civilly and criminally) those who pirate software and use

Please visit my website and contact me

<http://www.cadcamfactory.com/>
siyuwww@gmail.com

Recommend:

DP.Technology.ESPRIT.2011

NCGCAM.v10

OneCNC.XR4

ICAM.CAMPost.v19

Metalix.CNCKAD.v10.559

Camtek.PEPS.v7.0.14

EMCO.EasyCycle

Sescoi.WorkNC.G3.V21.05

HYPERMILL.V2011.SP2

Tebis CADCAM.v3.4R5

NREC.CAM V7.0

FCC.AutoPol.v2010.Standalone

VERO Machining Strategist v11(VERO MSG.V11)

MetaCAM-EX.V6

ESPRIT_MOLD(Auton).v10

SPACE-E.v4.8

CADCEUS.v6.5

Cadmeister.v6.1

MIMICS.v13 and 3-Matics.v6.1

ProCAM.v2009

Type3.TypeEdit.v2009

AlphaCAM.v2011

JetCAM.v15.56

PerfectCUT.V5.0

METROLOG_XG.V13

EUKLID.V10SP3

VISCAM.RP.V5.0