

Қарағанды мемлекеттік медицина университеті

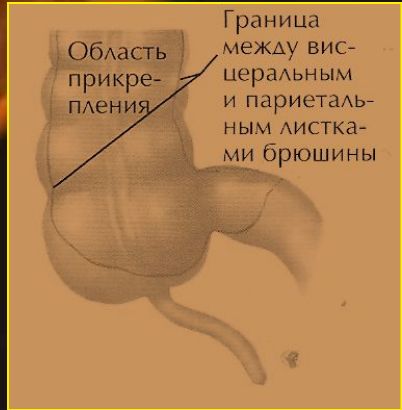
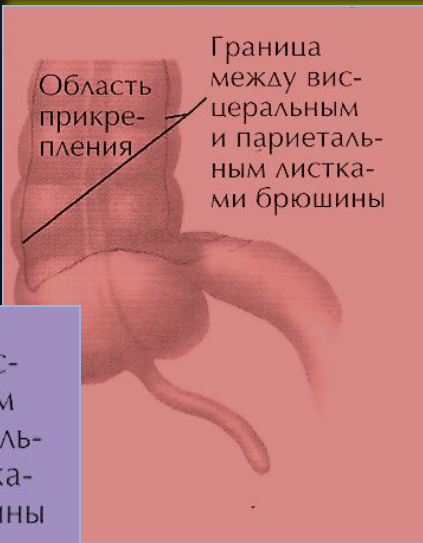
СӨЖ

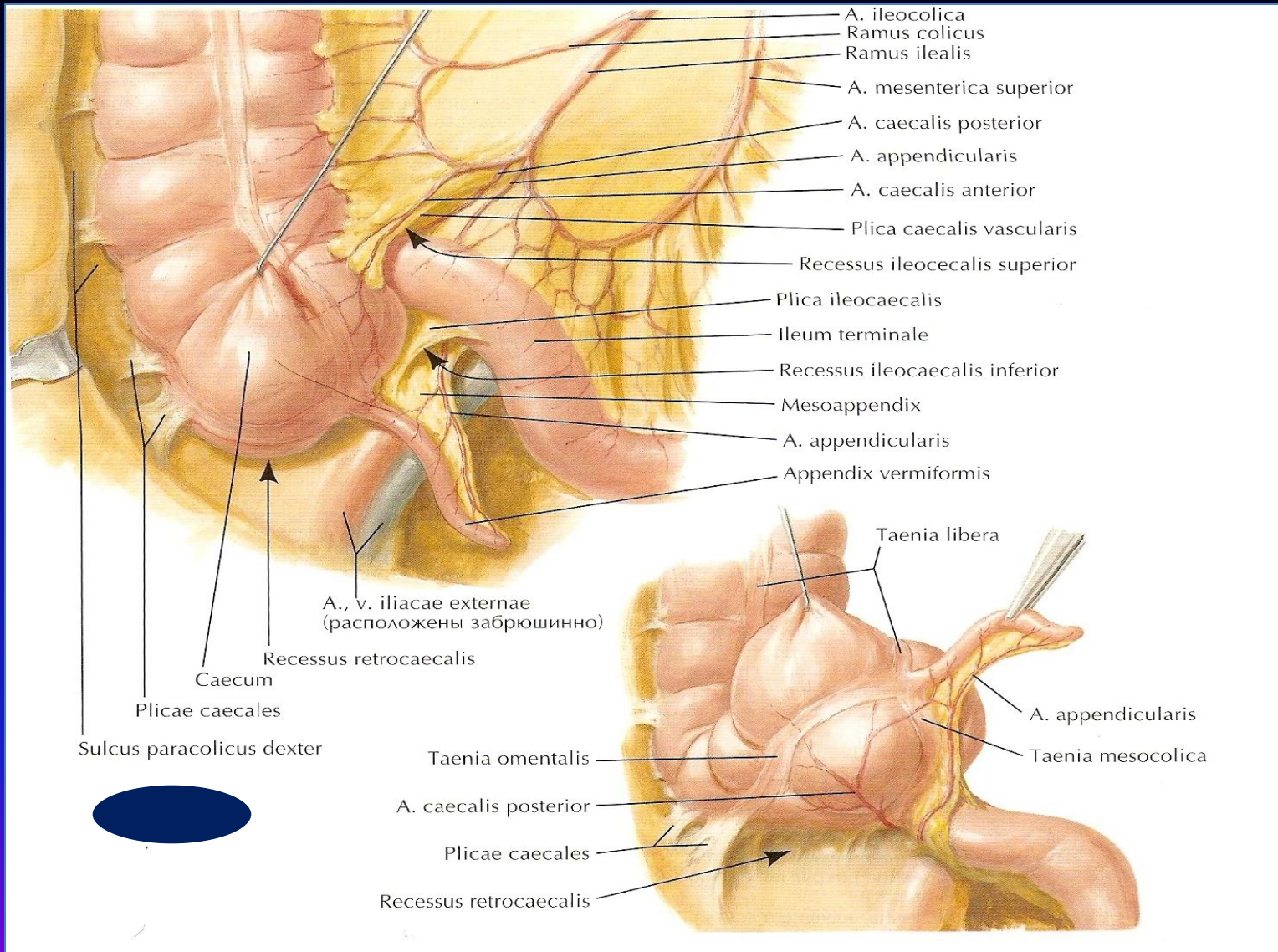
Тақырыбы: Соқыр ішектің құрт тәрізді өсіндісінің орналасуы

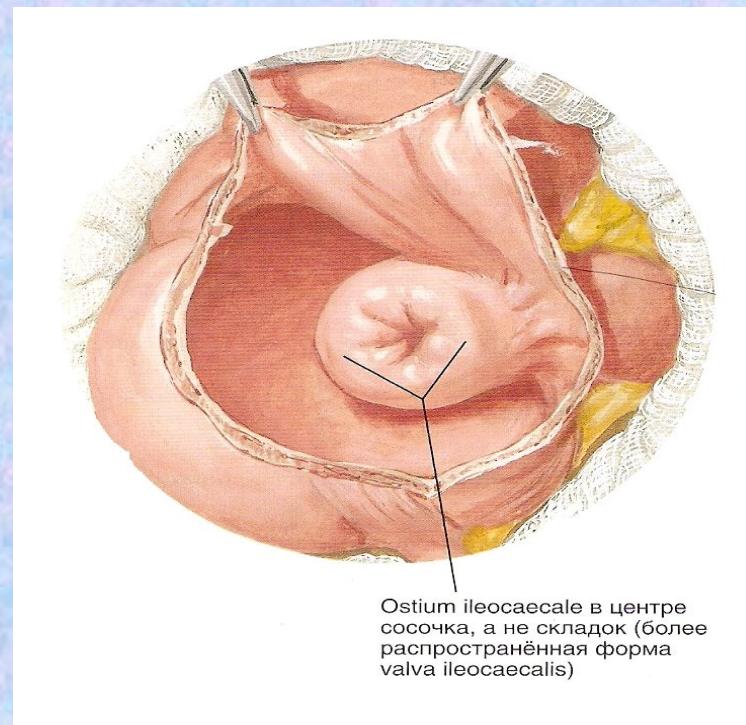
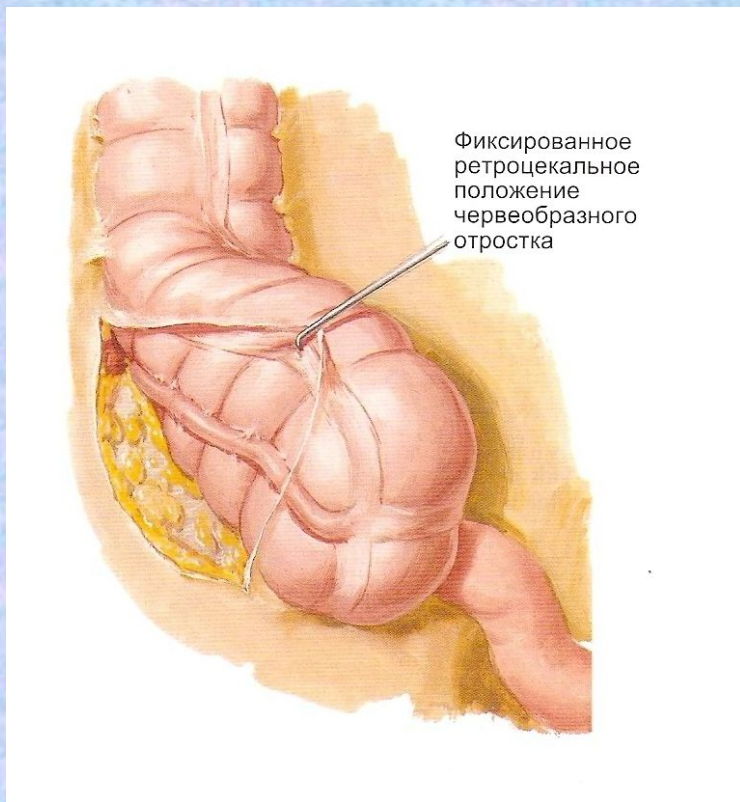


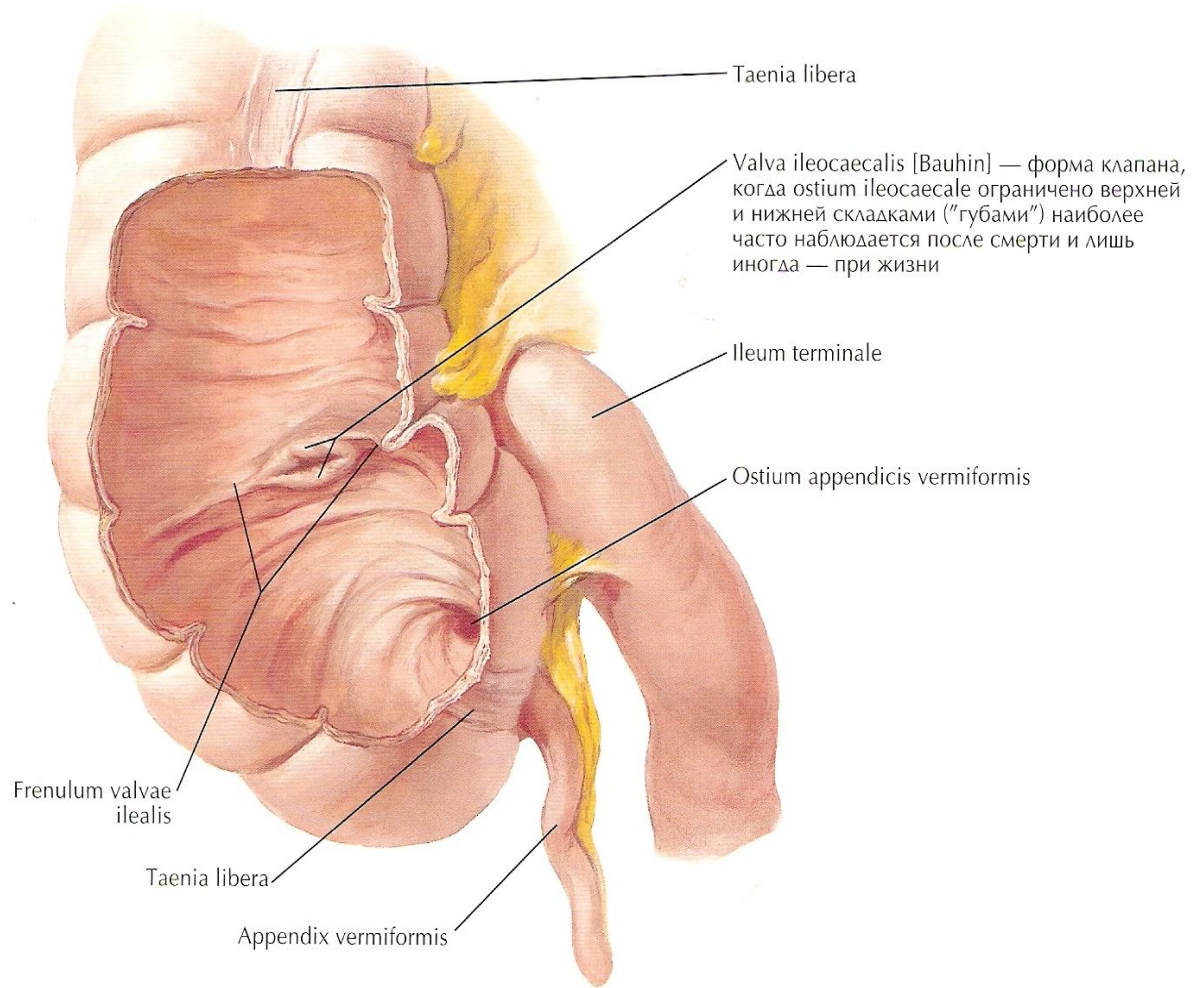
Орындаған:
топ ЖМФ
Тексерген:

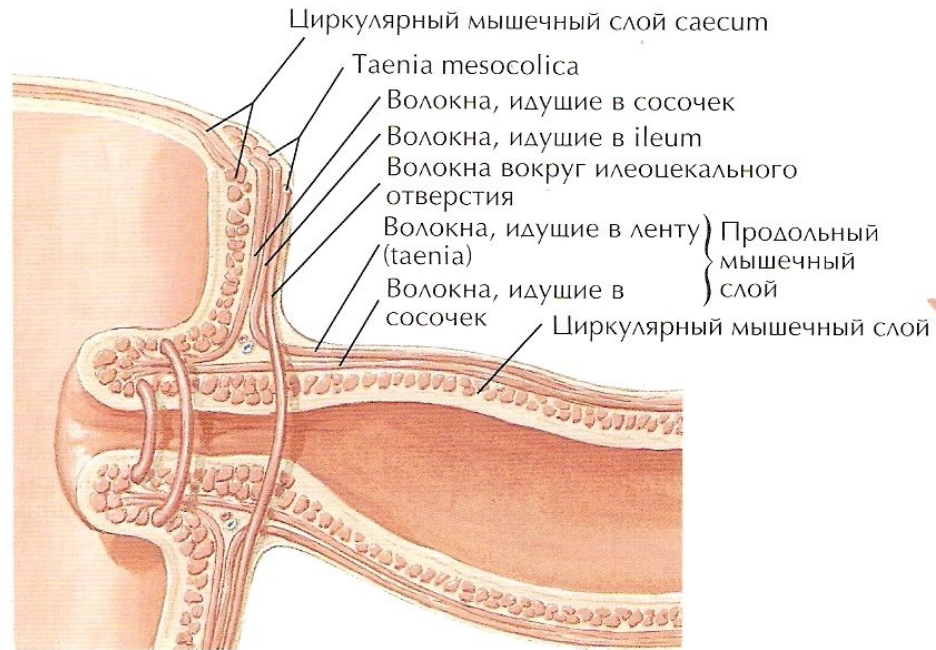
Қарағанды 2009 ж



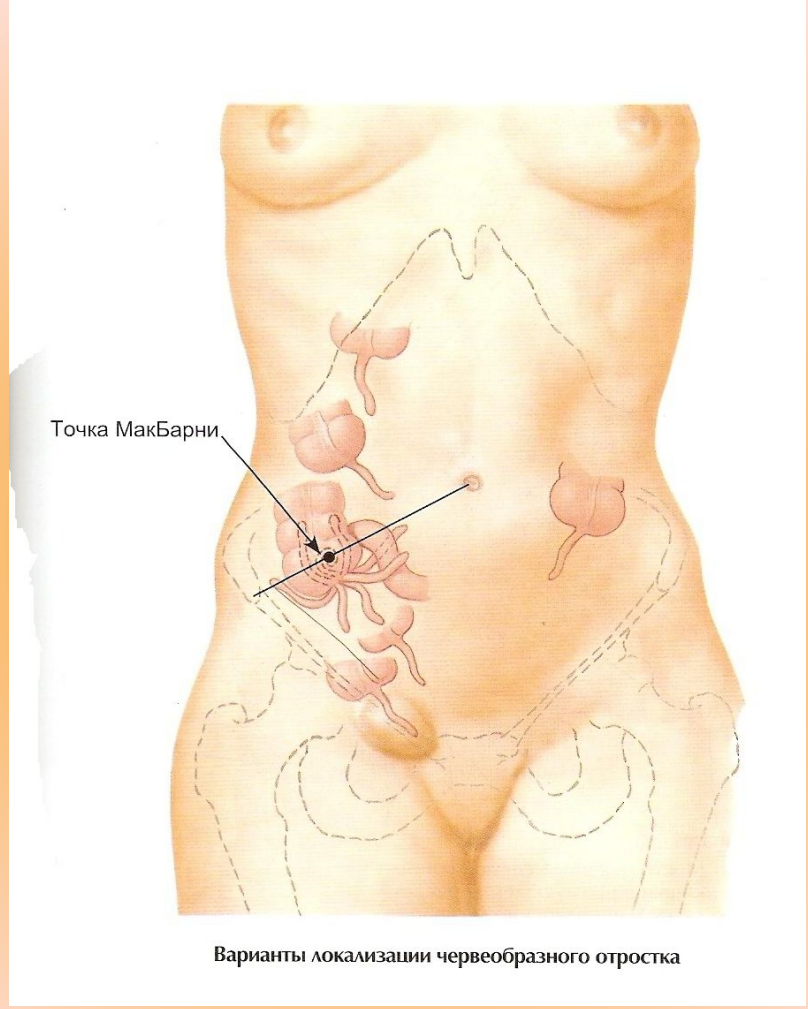


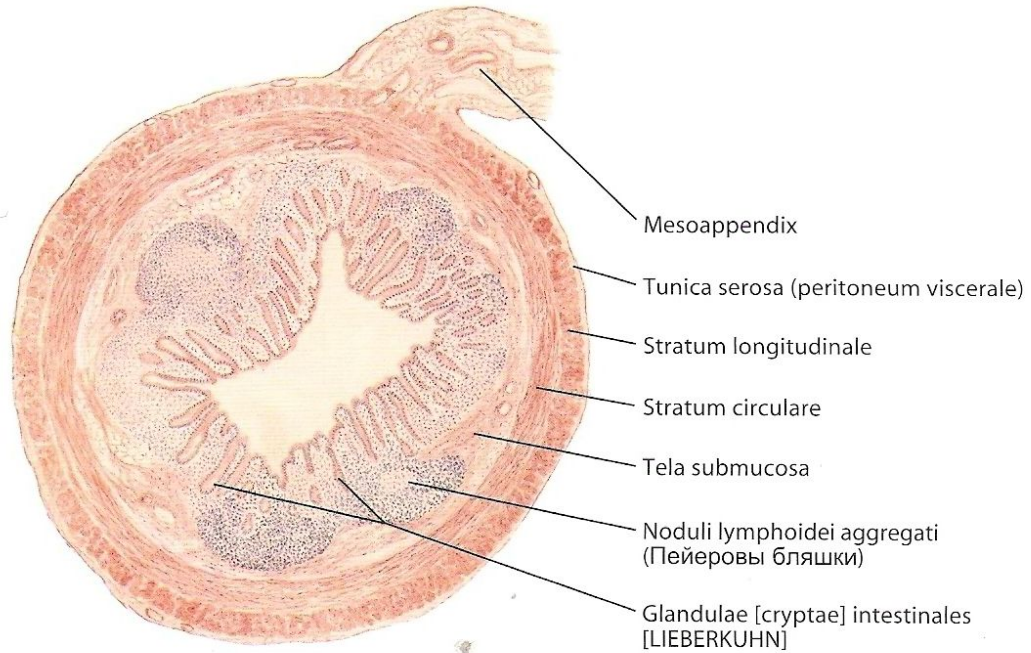






Мышечные слои в месте перехода подвздошной кишки в слепую (схема)





Mesoappendix

Tunica serosa (peritoneum viscerale)

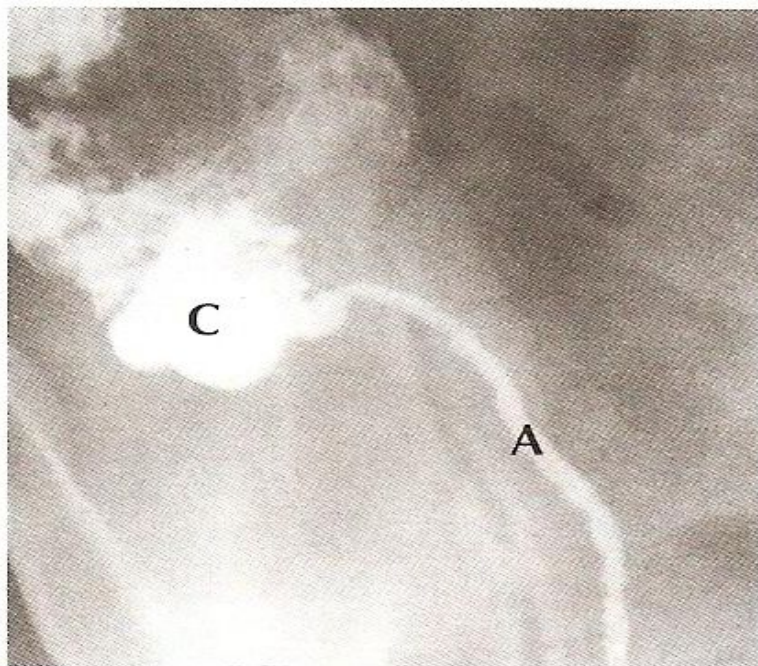
Stratum longitudinale

Stratum circulare

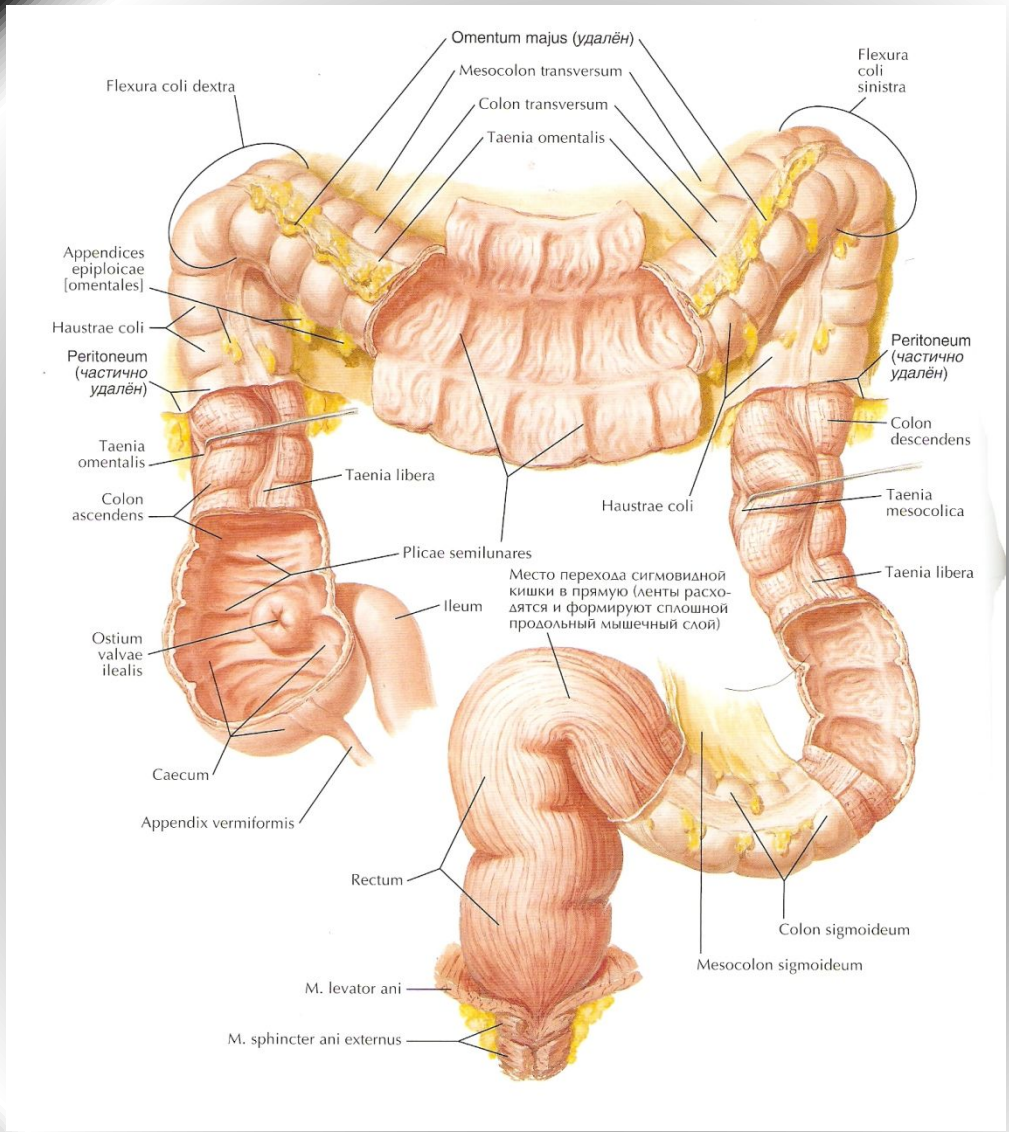
Tela submucosa

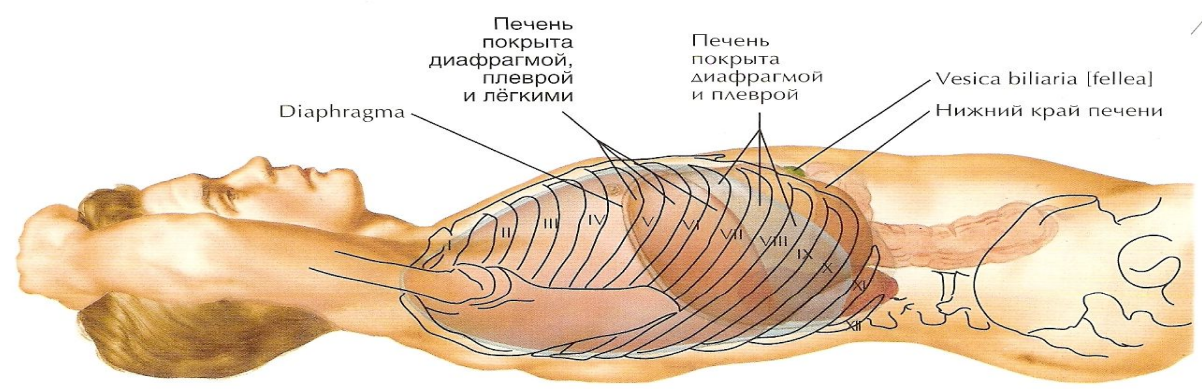
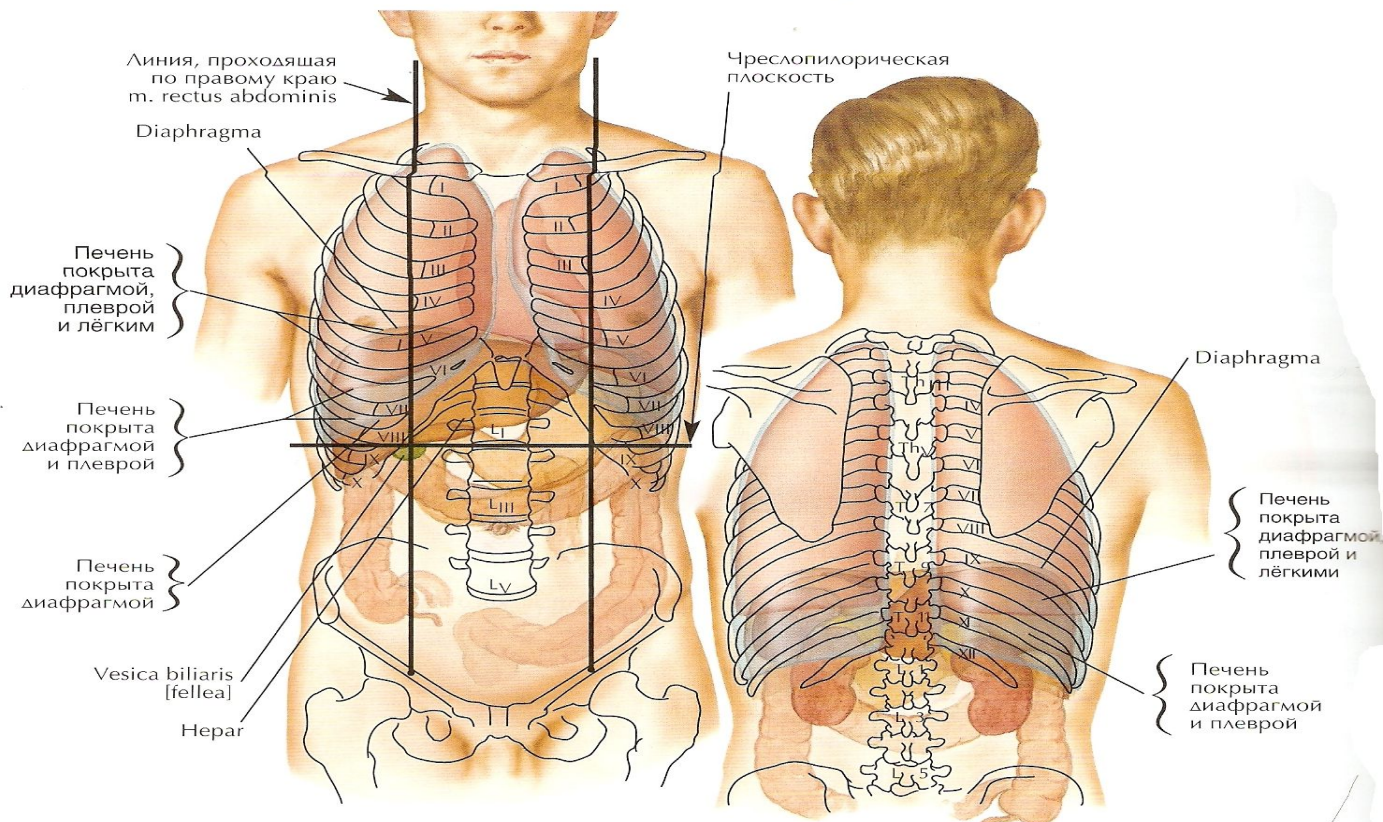
Noduli lymphoidei aggregati
(Пейеровы бляшки)

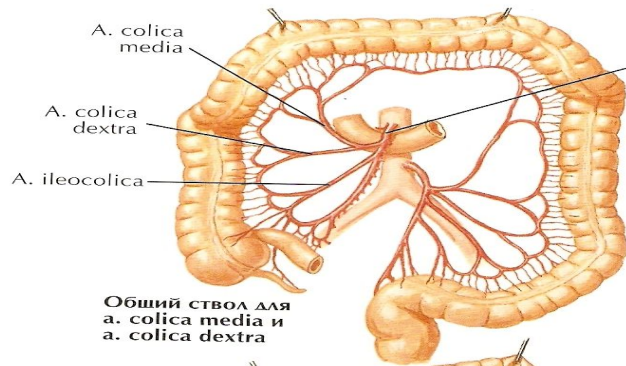
Glandulae [cryptae] intestinales
[LIEBERKUHN]



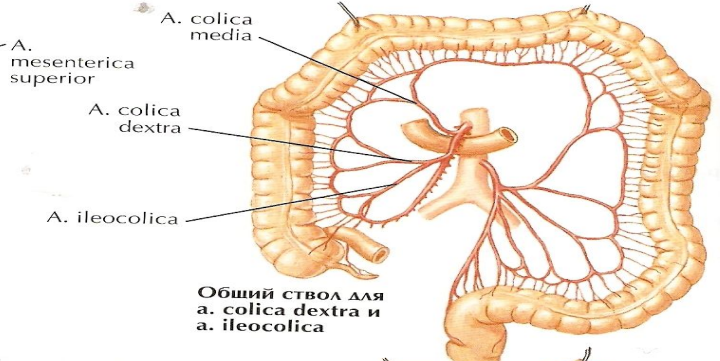
Рентгенограмма: барий
в необычно длинном
червеобразном отростке
(**A** - Appendix, **C** - Cecum)



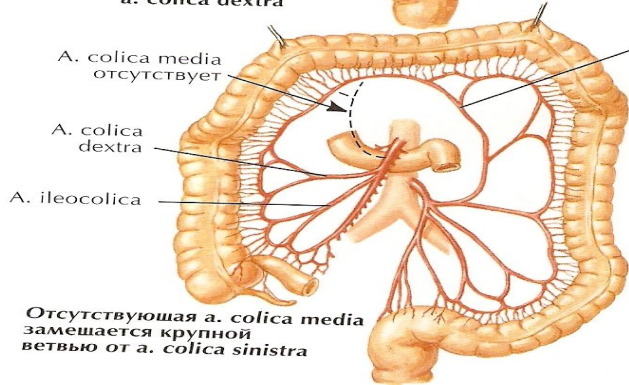




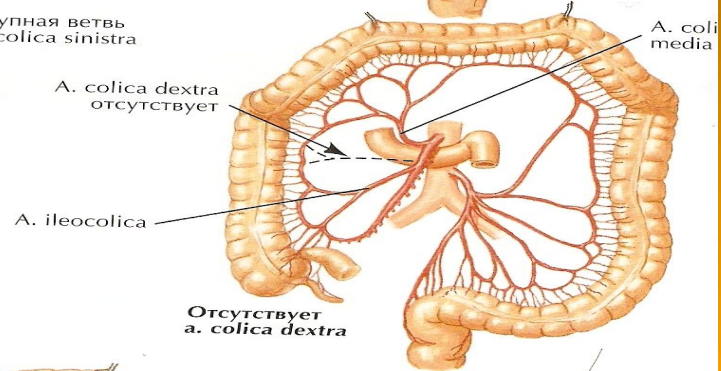
**Общий ствол для
a. colica media и
a. colica dextra**



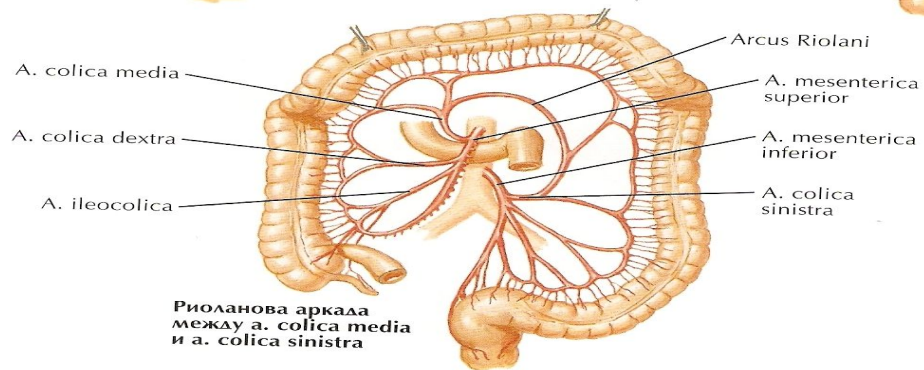
**Общий ствол для
a. colica dextra и
a. ileocolica**



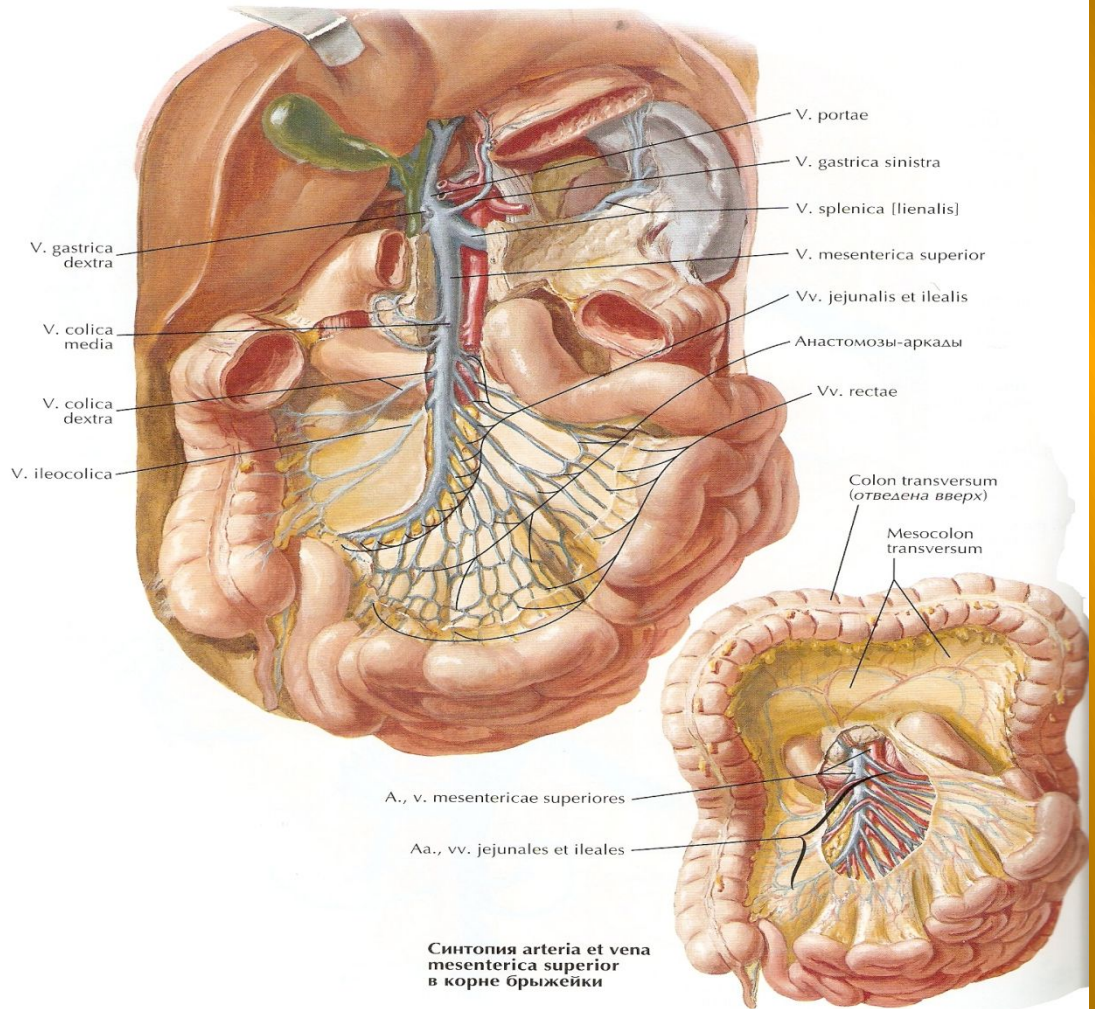
**Отсутствующая a. colica media
замещается крупной
ветвью от a. colica sinistra**



**Отсутствует
a. colica dextra**



**Риоланова аркада
между a. colica media
и a. colica sinistra**



Синтопия arteria et vena mesenterica superior в корне брыжейки

